

REC'D 8-21-03 SMY OK

Lee Surveying and Mapping Co., Inc.

Land Surveys • Topography • Subdivisions • Construction Layout

117 N. Madriver St.
Bellefontaine OH 43311



Phone: (937) 593-7335
Fax: (937) 593-7444

METZ 3.367 ACRES

Lying in Section 36, Town 5, Range 13, Liberty Township, Logan County, Ohio.

Being all of the remainder of the Barbara J. Metz 3.0 acre tract, and the remainder of the 1.33 acre tract as deeded and described in Official Record 551, Page 735 and being more particularly described as follows:

Beginning at a county re-survey monument found in a monument box on the center-line of Township Road 190 at the northwest corner of the northeast quarter of Section 36.

THENCE, with the north line of Section 36 and the center-line of Township Road 190 (40 feet wide), S 86°-00'-00" E, a distance of 23.44 feet to a MAG nail set.

THENCE, with the west line of C.C.C. & St.L. Railroad, S 12°-17'-55"W, a distance of 384.60 feet to a 5/8 inch iron rod set, passing a 5/8 inch iron rod set at 20.21 feet.

THENCE, with the lines of the Liberty Hills Golf Corp. 70.92 acre tract (O.R. 274, Pg. 713, Parcel I) and with the center-line of a McKees Creek, the following 5 (five) courses:

N 82°-09'-08"W, a distance of 26.09 feet to a point, referenced by a 5/8 inch iron rod set at N 24°-02'-38"E, a distance of 25.00 feet,.

N 63°-39'-11"W, a distance of 251.06 feet to a point, referenced by a 5/8 inch iron rod set at N 49°-23'-23"E, a distance of 16.50 feet.

N 41°-23'-11"W, a distance of 97.14 feet to a point, referenced by a 5/8 inch iron rod set at N 22°-21'-45"E, a distance of 20.00 feet.

N 65°-14'-01"W, a distance of 129.05 feet to a point, referenced by a 5/8 inch iron rod set at N 62°-12'-41"E, a distance of 19.00 feet.

N 27°-47'-18"W, a distance of 199.28 feet to a MAG nail set, passing the right-of-way at 175.71 feet.

THENCE, with the north line of Section 26 and the center-line of Township Road 190, S 86°-00'-00"E, a distance of 585.10 feet to the point of beginning.

Containing 3.367 acres, of which 0.275 acre is within the highway right-of-way.

The basis for bearings is the north line of Section 36, being S 86°-00'-00"E, and all other bearings are from angles and distances measured in a field survey by Lee Surveying and Mapping Co., Inc. on July 23, 2003.

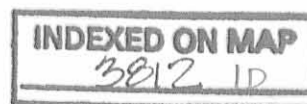
Description prepared by:



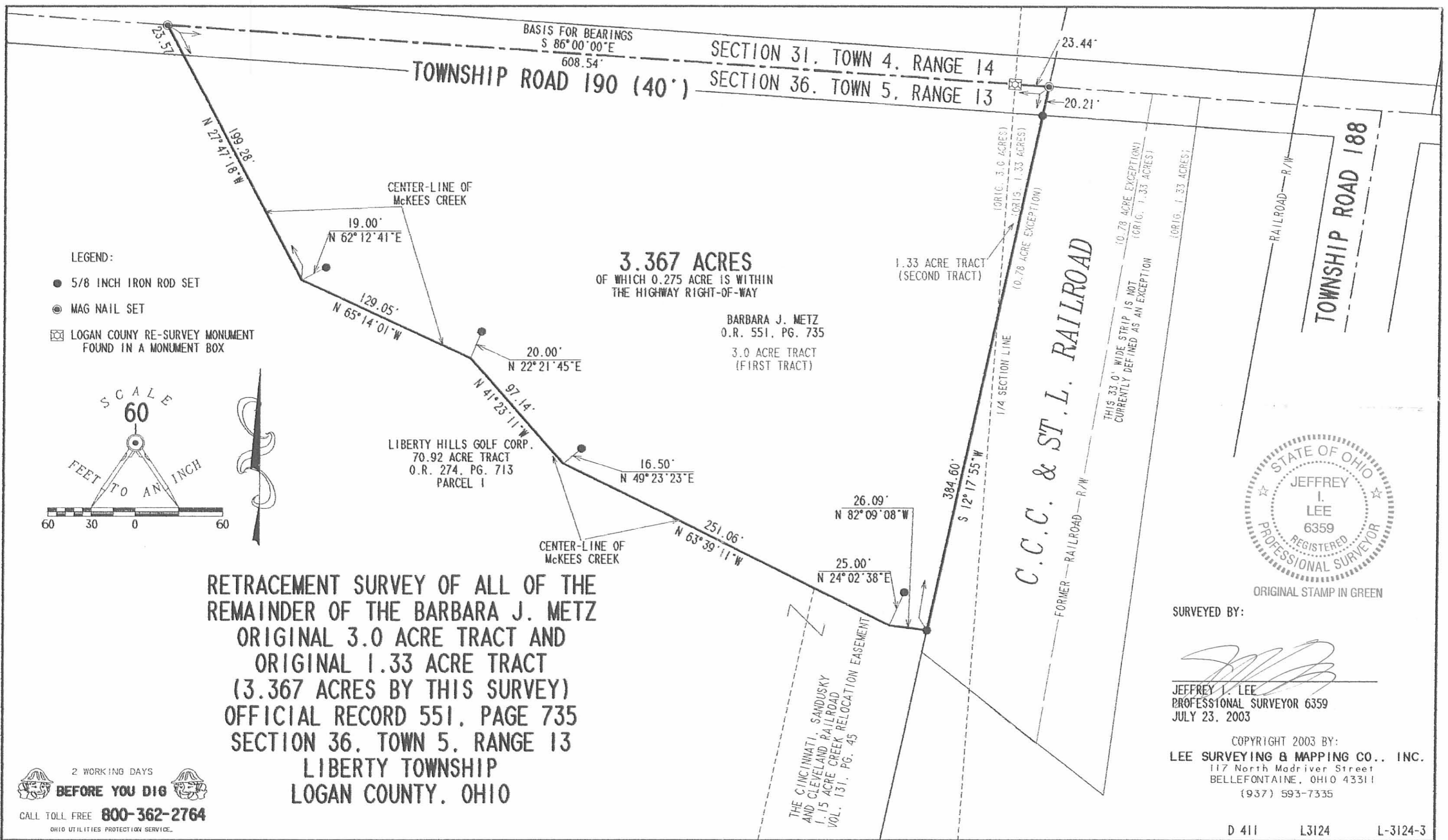
ORIGINAL STAMP IN GREEN

Jeffrey I. Lee
Jeffrey I. Lee
Professional Surveyor 6359
July 25, 2003

L-3124



REC'D 8-21-03 SWM/OK



INDEXED ON MAP
3812 1P

D 411 L3124 L-3124-3

2 WORKING DAYS
BEFORE YOU DIG
CALL TOLL FREE **800-362-2764**
OHIO UTILITIES PROTECTION SERVICE.



CENTERLINE C.C.C. & ST.L. R.R.

RIGHT OF WAY LINE

PROPERTY LINE

ROAD No. 249

ROAD No. 249

WOODS

Mc KEES

CREEK

LAKE



U.S.G.S. 10 FOOT CONTOURS PLOTTED.

THE BELLEFONTAINE COUNTRY CLUB
SEC. 36 T-5 R-13
LIBERTY TOWNSHIP
LOGAN COUNTY, OHIO
1965

SCALE 1" = 100'

DAL L. DOUGLASS
REG. SURVEYOR 4270
BELLEFONTAINE, OHIO

