

FB 614

11-14-95 Wilgus
Haines

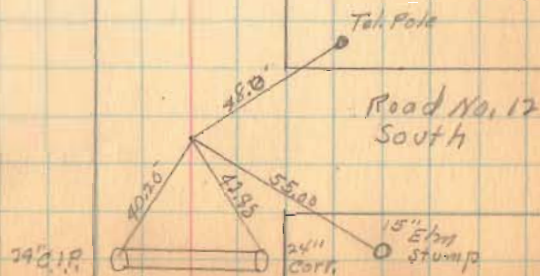
63

Road No-50 from No 12 E

4328

INDEXED ON MAP

See 1919



FB 614

Road No 50

12-14
9-11
100-11

Party -

X - G. W. Lucas

□ - C. K. Lucas

di - H. F. Lucas

31 Mar 47

64

Sec 9936

Iron set
20° 28' L

Hub 30

57.45
16.15

sec. 12201

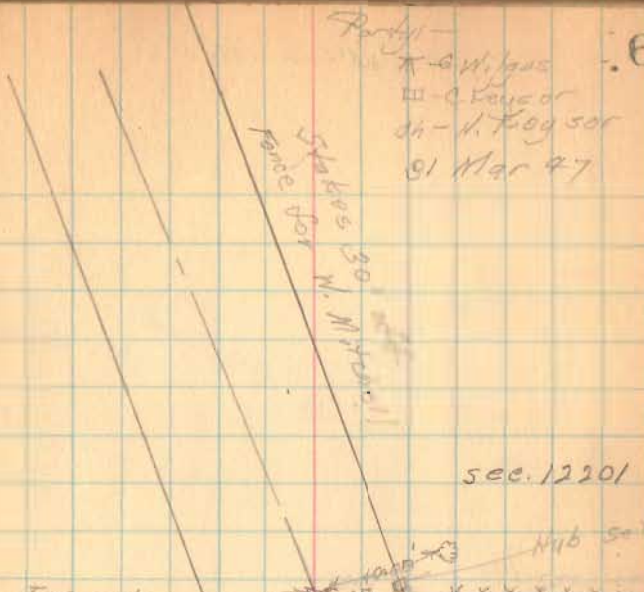
Hub 50

Stone band on
Sec line

sec. 13100

Road No 12
North

Sec
9936



FB 614

Road No 50

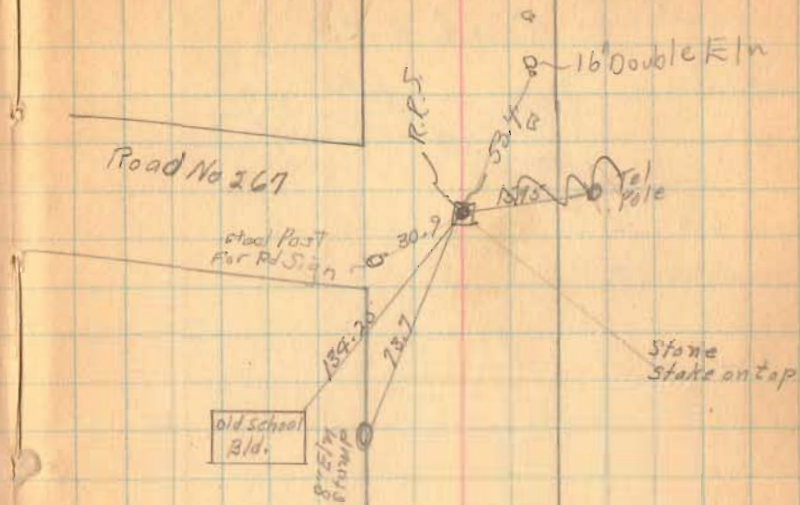
65



FB 614

Road No 50

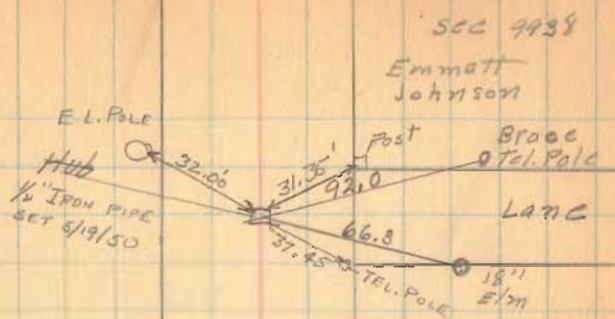
66



FB 614

Road # 50

67



SEC 9938
Emmatt
Johnson

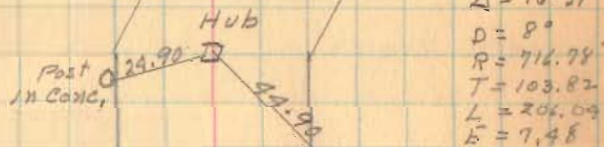
Foster Ramsey

SEC 9937

FB 614

Road No 50

68



staked
11-16-95
COC
W. I. G. H.
HOLMES
HUBS
set for
Mon. on
R.C. & P.T.

FB 614

Road No 50

69

Lewis E
Predmore

X X X X

Emmett Johnson

stone

X X X X

stone

FB 614

Road No 50

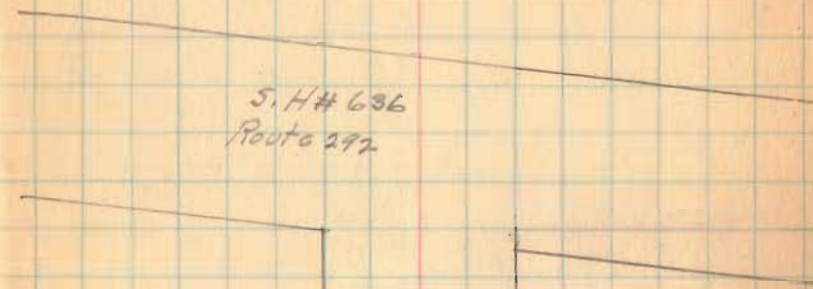
70



FB 614

Road No 50

71



S. H# 636
Route 292

FB 703

C.H. No. 50

Rushcreek & Bokescreek Twp.

R/W Mon Set for 60' Road

Sta. R.R. Spikes on E of R/W Mon.

30+00 R/W Mon. Set @ 30' from E

25+00 R/W Mon. Set @ 30' from E

20+00 R/W Mon. Set @ 30' from E

16+89.0 Iron Pin Found - $\Delta = 0^{\circ}05'$ Rt - R/W Mon. Set

13+00 R/W Mon. Set @ 30' from E

6+00 R/W Mon. Set @ 30' from E

1+00 R/W Mon. Set @ 30' from E

0+00 Iron Pin Found

Aug-1957 - Surrey
Aug-1964 - Mon. Set

Shirk
Silverstein
Tevis
Heminger

19

Imogene Porter

Boyd Stanfield

* RB Sta. 32+65.7

* RB Sta. 27+59

4328

INDEXED ON MAP

Sta 26+07

Sta 26+01

N. 83 3/4° E

Geo. J. Ansley

Harry Kramer Jr.

Sta 16+89.0
Iron Pin Found * RB
 $\Delta = 0^{\circ}05'$ Rt.

John E. Kinney

E. C.H. 50

Car Post

Car Post

E. C.H. 110

E. C.H. 5

Iron Pin

E. Pole

Car Post

C.H. 5

FB 703

C.H. 50 contd.

Sta.

65+00 R/W Mon. Set @ 30' from E

60+00 R/W Mon. Set @ 30' from E

55+00 R/W Mon. Set @ 30' from E

53+10.1 Iron Pin Found - $\Delta = 0^{\circ} 09' 1/2''$ Lt.

50+00 R/W Mon. Set @ 30' from E

48+31.3 Iron Pin Found - $\Delta = 0^{\circ} 12' 1/2''$ - Section Line

45+00 R.R. Spike Set on E but no R/W Mon. Set

40+00 R/W Mon. Set @ 30' from E

35+00 R/W Mon. Set @ 30' from E

19

John S. Watkins

* R Sta. 64+88 *



Choice Beck

John E. Kinney

Iron Pin Found
Sta 53+10.1
 $\Delta = 0^{\circ} 09' 1/2''$
EIR CMP

E. C.H. 12
To Walnut Grove

Choice Beck

* R Sta. 50+26.3 *

V.M.S. 9936

E. C.H. 131

V.M.S. 10041

Iron on Stand
Sta 48+31.3
 $\Delta = 0^{\circ} 12' 1/2''$

Cemetery

V.M.S. 13199

V.M.S. 10631

* R Sta. 47+06 *

W^o B. Green

Arrol B. Cost

* R Sta. 40+45 *

* R Sta. 36+30 *

Imogene Porter

Boyd Stanfield

FB 703

C.H. 50 cont'd.

Sta.

105+00 R/W Mon Set @ 30' Rt. Only

97+41.80 Ahead

97+39.66 Back P.T. - R/W Mon set @ 30' Lt. only

96+41.7 P.I. - Iron Pin Found - $\Delta = 20^\circ - 28'$ Lt.

95+41.60 P.C. - R/W Mon Set @ 30' from \mathcal{L}

90+00 R/W Mon Set @ 30' from \mathcal{L}

85+00 R/W Mon Set @ 30' from \mathcal{L}

81+43.1 Iron Pin Found - No Angle

80+00 R/W Mon. Set @ 30' from \mathcal{L}

75+00 R/W Mon Set @ 30' from \mathcal{L}

70+00 R/W Mon Set @ 30' from \mathcal{L}

20

CURVE DATA

$\Delta = 20^\circ - 28'$
 $D = 10^\circ - 20'$
 $R = 554.48'$
 $T = 100.10'$
 $L = 198.06'$
 $E = 8.96'$

Wellington T. Mitchell

V.M.S. 12201

Iron Pin Found
 Sta. 96+41.7
 $\Delta = 20^\circ - 28'$

Survey Cor. Stone

Sta. 96+41.7

V.M.S. 13200

Odio D. Frey

John S. Watkins

C.H. 12

← To Big Springs

E. Pole

Iron Pin Found
 Sta. 81+43.1
 No Angle

John E. Kinney

FB 703

C. H. 50 cont'd.

150+00 R/W Mon Set @ 30' from L

145+00 R/W Mon Set @ 30' from L

140+00 R/W Mon Set @ 30' from L

135+00 R/W Mon Set @ 30' from L Rt. Only

130+00 R/W Mon Set @ 30' from L

125+00 R/W Mon. Set @ 30' from L

120+00 R/W Mon. Set @ 30' from L

116+07.6 Iron Pin Found - $\Delta = 0^\circ - 05' \text{ Rt.}$

115+00 R/W Mon. Set @ 30' from L

110+00 R/W Mon. set @ 30' from L

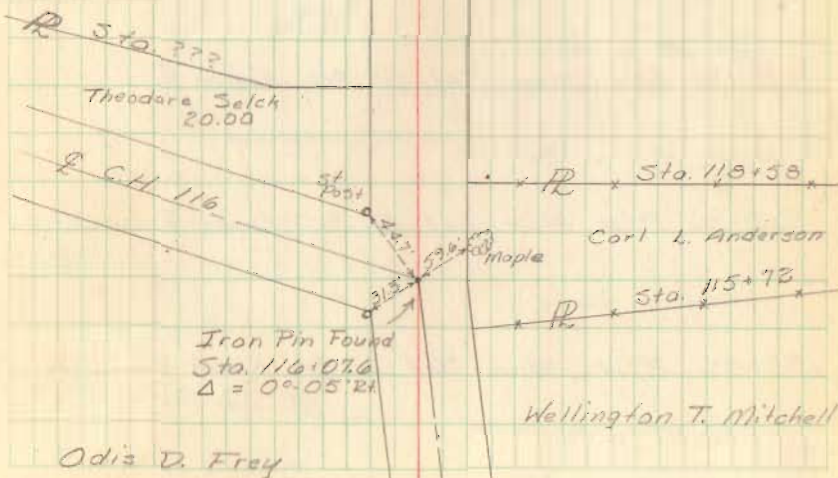
21

Bokeycreek
Bushcreek

Township
Township

Richard T. Deubler

Elton E. Kinney



FB 703

C.H. 50 cont'd.

190+00 R/W Mon. Set @ 30' from E

187+39.2 Iron Pin Found - No Angle

185+00 R/W Mon. Set @ 30' from E Rt. Only

180+00 R/W Mon. Set @ 30' from E

175+00 R/W Mon. Set @ 30' from E

170+00 R/W Mon. Set @ 30' from E

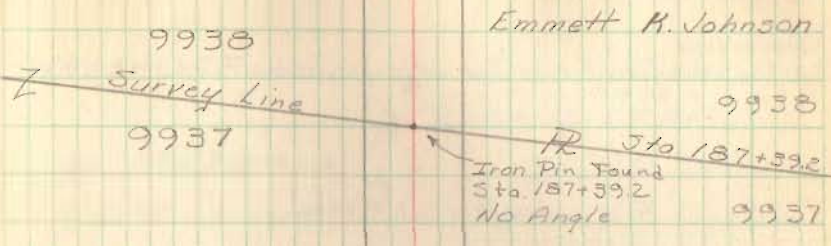
169+75.1 Iron Pin Found - No Angle

165+00 R/W Mon. Set @ 30' from E

160+00 R/W Mon. Set @ 30' from E

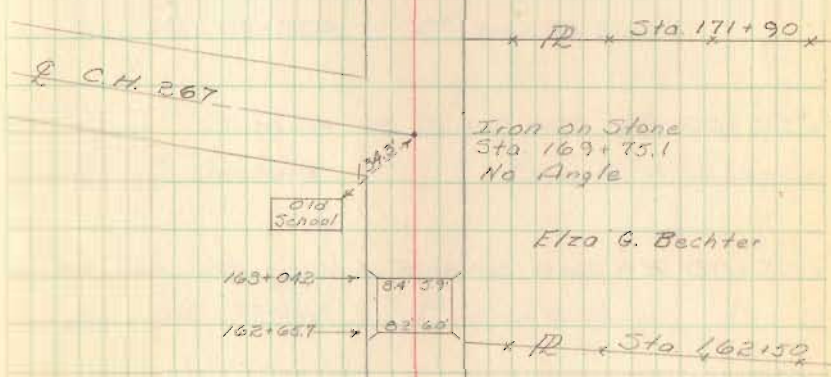
155+00 R/W Mon. Set @ 30' from E

22



Earl F. Fish

Donald C. Frederick



Elza G. Bechter

Theodora Jatch

Orville Gibson



Richard T. Deubler

Elton E. Kinney

FB 703

C.H. 50 cont'd.

Sta.

223+66.6 Ahead
223+73.0 Back Correction sta of angle - Iron Pin - $\Delta = 13^{\circ}29' Rt.$

220+00 R/W Mon. Set @ 30' from E Rt. Only

215+00 R/W Mon. Set @ 30' from E

210+00 R/W Mon. Set @ 30' from E

205+00 R/W Mon. Set @ 30' from E

200+00 R.R. Spike Set on E but no R/W Mon. Set

195+25.0 Iron Pin Found - R/W Mon. Set - $\Delta = 16^{\circ}29' Rt.$

23

Wm S. Ramsey

Wilbur M. Ramsey

Iron Pin Set
Sta. 223+66.6
 $\Delta = 13^{\circ}29' Rt.$

* RR * Sta. 223+58.6 * RR * Sta. 223+58.6 *
Maple Pear

Hazel Deardorff

Hazel Deardorff

Stone Found
Sta. 214+61
No Angle

* RR * Sta. 209+25.9 *
Iron Pin Found

Colvin E. Deskard

Emmett K. Johnson

* RR * Sta. 197+24.2 *
Iron Pin Found

Iron Pin Found
Sta. 195+25.0
 $\Delta = 16^{\circ}29' Rt.$

Earl E. Fish

Sta.

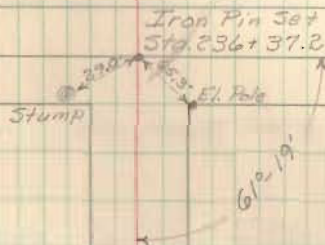
236+37.2 Iron Placed in E S.P. 292

235+00 R/W Mon. Set @ 30' from E

230+00 R/W Mon. Set @ 30' from E

225+00 R/W Mon. Set @ 30' from E

E S.P. 292

W^m S. RamseyW^m S. Ramsey~~+ TD + Sta 224+87~~

Wilbur M. Ramsey