

Lee Surveying and Mapping Co.



Farm Surveys • Lot Surveys • Topography • Subdivisions • Construction Layout

855 EAST SANDUSKY AVENUE
BELLEFONTAINE, OHIO 43311

(513) 593-5780

CLAYTON M. LEE, P.S.
JEFFREY I. LEE, P.S.

HUMBLE SURVEY

Lying in the southeast quarter of Section 32, T-4, R-14, Liberty Township, Logan County, Ohio and being out of that 73.72 acres deeded and described in Volume 363, Page 6 of the Logan County Records of Deeds and more particularly described as follows:

Beginning at a point in the center-line of U. S. Route 68 a distance of 2151.3 feet northerly along said center-line from the south line of Section 32 and being the northeast corner of a 5 acre tract (Volume 318, Page 983) and designated in the State Highway records and plans as being Station 240+19.6.

THENCE, along the north line of said 5 acres, N 88°-35' W, a distance of 657.9 feet to an iron pipe marking the northwest corner of said 5 acres.

THENCE, with the west line of said 5 acres extended, N 0°-35' W, a distance of 86.29 feet.

THENCE, N 85°-50' E, a distance of 647.63 feet to the center-line of U. S. Route 68.

THENCE, with said center-line, S 4°-10' E, a distance of 150.00 feet to the point of beginning. Containing 1.767 acres.

Last previous deed reference: Volume 363, Page 6.

Prepared by:

Jeffrey I. Lee
Reg. Surveyor No. 6359
2-22-79

6971 ID

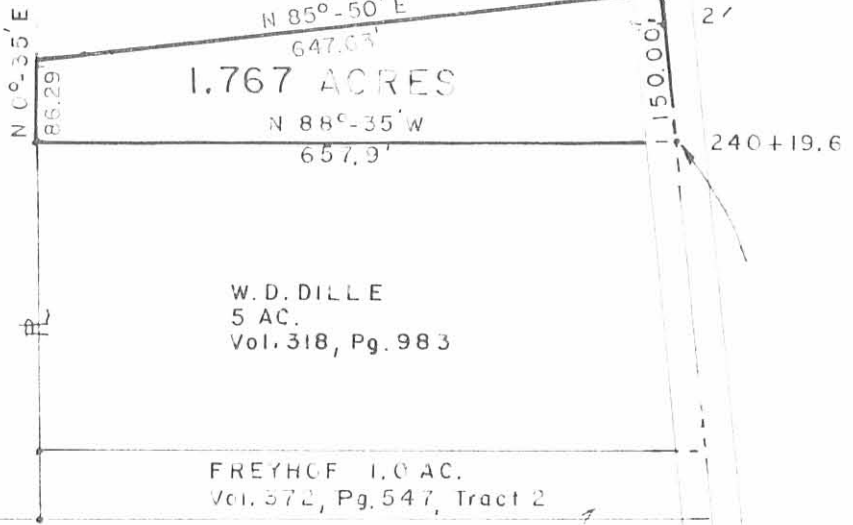
INDEXED ON MAP





TRACY HUMBLE
73.72 ACRES (Vol. 363, Pg. 6)
71.485 AC. Remaining

SCALE 1" = 200'



SURVEY OF 2.235 ACRES OUT OF THE
HUMBLE 73.72 ACRES (Vol. 363, Pg. 6)
SEC. 32, T-4, R-14, LIBERTY TWP.
LOGAN COUNTY, OHIO



Clayton M. Lee
Reg. Surveyor 6181

2-22-79

LEE SURVEYING & MAPPING CO.

855 E. Sandusky Ave.
BELLEFONTAINE, OHIO 43311
(513) 593-5780

SEC. 32, T-4, R-14
SEC. 31, T-4, R-14

69711P
~~1658~~

INDEXED ON MAP