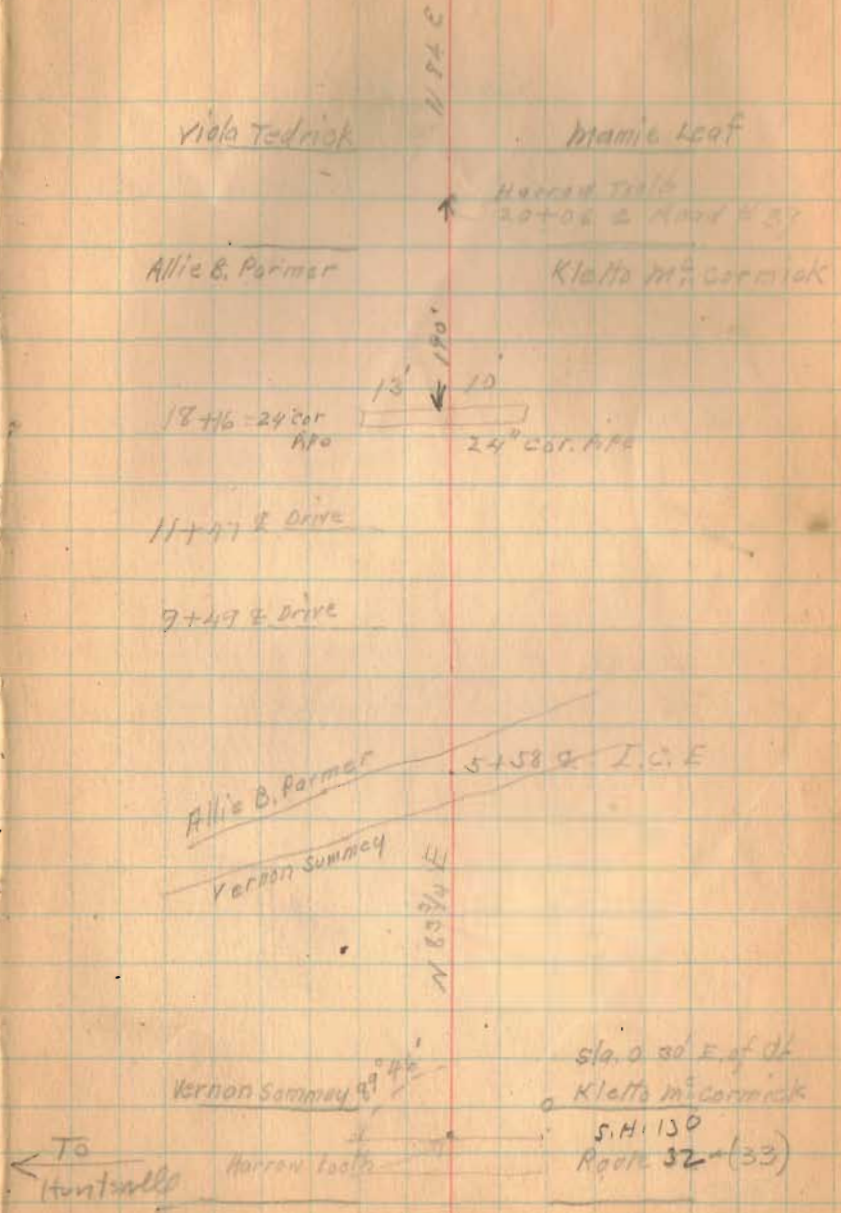


02.07
 2000
 1234
 408
 409

3 Aug. 1973
 Fd. 3/4" iron
 3' deep
 C.N.

1310
 INDEXED ON MAP

2000



Viola Tedrick

Mamie Leaf

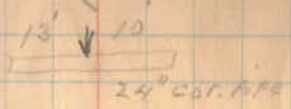
Harrow Tooth
 20+06 E Road # 37

Allie B. Farmer

Kletta M. McCormick

I.C.E.

18+16-24" Cor. R.P.O.



11+47 E Drive

9+49 E Drive

Allie B. Farmer

5+58 E I.C.E.

Vernon Summey

N 63° 30' W

Vernon Summey 8' 45"

Sta. 0 30 E. of dt

Kletta M. McCormick

S.H. 150
 Road 32-(33)

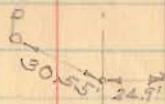
To Huntville

Harrow Tooth

Road, 37

3 Aug. 1973

Fd. Harrow tooth
 & traces of brick
 5" deep
 C.H.



1310
 INDEXED IN MAP

John Torbulton

66+46.59 Road # 238

N 83 1/2 E

stone.

Johnson Nelson

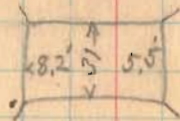
51+67
 Johnson Nelson
 Chas. W. Demory

N 89 1/4 E

56+45 E
 John West Trustee
 54+86
 Chas. W. Demory

Chas. W. Demory
 Viola Tedrick

44+57.6'
 Harrow Tooth



40+36 & Bridge

Chas. W. Demory
 33+12 line S.
 marble Leaf

Road 37

(1310)
INDEXED ON MAP

27

75+05 = 12" Pipe 7' 12"

May Farm Sales Inc.
72+68
E.C. Bidwell

72+00 = 12" Pipe 12' 12"

70+00 = 12" Pipe 12' 12"

81+50 E.C. Bidwell drive

H. A. Haver 81+50
John West Trust

80+00 spike

79+68 E.C. Bidwell
John Tarbell

Road 37

1310

INDEXED ON MAP

Drive 118+74

117+75 = 24" Pipe 12' 18"

111+16 = 15' Pipe 8' 16"

104+15 Drive

stake C.M. Turner 106+28
H.A. Hoover
chained 1320' from S.M.L.
of Turner land (deed dist)
Hoovers called dist of
3309.24' full 3' south
of stake.

Drive 100+30

Road 37.

1310
INDEXED ON MAP

D.K. Blue

Stone 133+15.3 of Road # 419
Patterson pike

C. M. Turner

128+85-24 Gal Pipe 20' 10"

122+27 D.K. Blue
May Farm Sales Inc.

120+12 = 14' Pipe 10' 16"