

Mast to McCleary McArthur Township April 1960 4.94 Acres

The following described land in McArthur Township, Logan County, Ohio,  
and being in V.M.S. 9903  
9928

Beginning a square concrete post in the west line of the C.C.C. & St.L. Rail Road right of way, and being at the N.E. corner of Arthur F. Mast's present 78.31 acre tract and at the S.E. corner of Charles S.

McCleary's 9.59 acre tract thence with the south side of said 9.59 acre tract S. 87 - 28 W. 525.5 feet to a round wood post at an interior corner of Arthur F. Mast's 78.31 acre tract and also being the S.W. corner of said McCleary's 9.59 acre tract. said post being the beginning point of this survey.

Thence with the west side of said 9.59 acre tract N. 3 - 00 W. 719.50 feet to the N.E. corner of a large square wood post in the south line of Charles S. McCleary's 79.25 acre tract.

Thence with the south side of said 79.25 acre tract S. 87 - 25 W. 135.0 feet to an iron.

Thence S. 21 - 35 W. 789.0 feet to an iron.

Thence N. 87 - 28 E. 463.5 feet to the place of beginning. Said tract containing 4.94 acres.

cc  
Logan County Engineer

*Plat Book*  
INDEXED ON MAP  
2569  
10-1  
INDEXED ON MAP

McCleary to Mast

McArthur Township

April 1960

1.17 Acres

The following described land in McArthur Township, Logan County Ohio and being in V.M.S. 9903 9928

Beginning at a point in the center of Cherokee Creek in the east line of Foly Fry's 101.23 acre tract and at the N.W. corner of Arthur F. Mast's present 78.31 acre tract and also being the S.W. corner of Charles S. McCleary's present 79.25 acre tract.

Thence N. 87 - 25 E. 383.2 feet to a point in the center of a small open ditch. The last described line being the present line between Charles S. McCleary and Arthur F. Mast. The last described line passing an iron pipe on the east bank of Cherokee Creek at 25.0 feet and also passing an iron pipe on the west bank of the open ditch at 370.2 feet.

Thence with the center of said open ditch N. 51 - 29 W. 406.0 feet to a point in the center of Cherokee Creek.

Thence with the center of Cherokee Creek S. 13 - 40 W. 279.0 feet to the place of beginning.

Said described tract containing 1.17 acres.

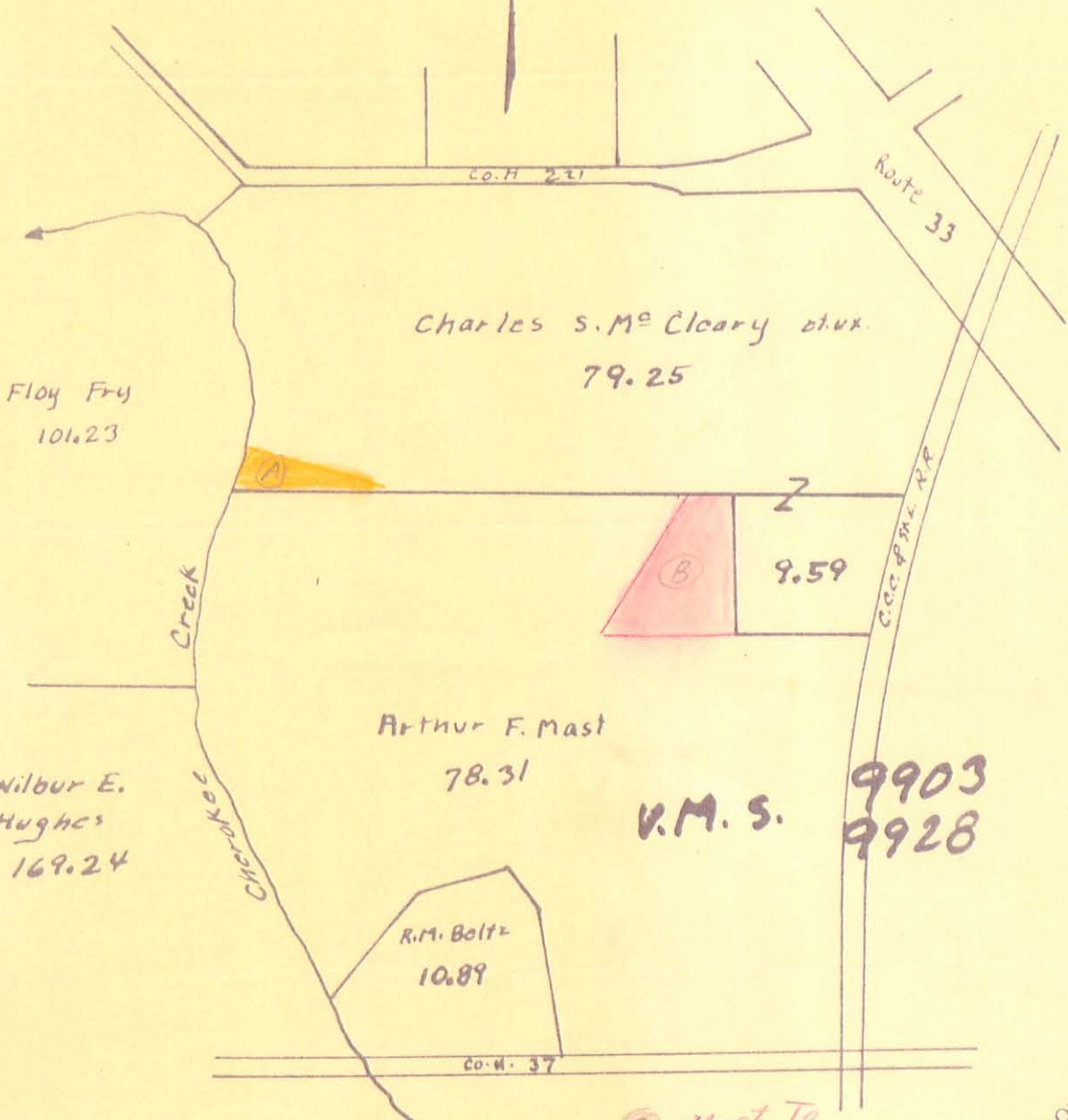
cc ✓  
Logan County Engineer

on Plat Book

INDEXED ON MAP  
2569 10-2

Mc Arthur Twp.  
Plat Book  
Page 4

(A) McCleary To  
Mast  
14.7 Acres



(B) Mast To  
McCleary  
4.94 Acres

V.M.S. 9903  
9928

INDEXED ON MAP

2569  
1A

INDEXED ON MAP

Book  
PW-30  
April-1960