

SURVEY OF RAILROAD PROPERTY
HUNTSVILLE, OHIO
FOR THE VILLAGE OF HUNTSVILLE

- A = 3/4" pipe Found
 B = 1/2" pipe Found
 C = 1/2" Bar Found
 D = 3/4" pipe Set
 E = 1/2" Pipe Found
 F = 3/4" Pipe Set
 G = " " "
 H = 1" Pipe Found
 I = 3/4" Pipe Set
 J = " " " = "B" pg 40
 K = " " " 50' W. of E Main Track
 L = " " " " " "

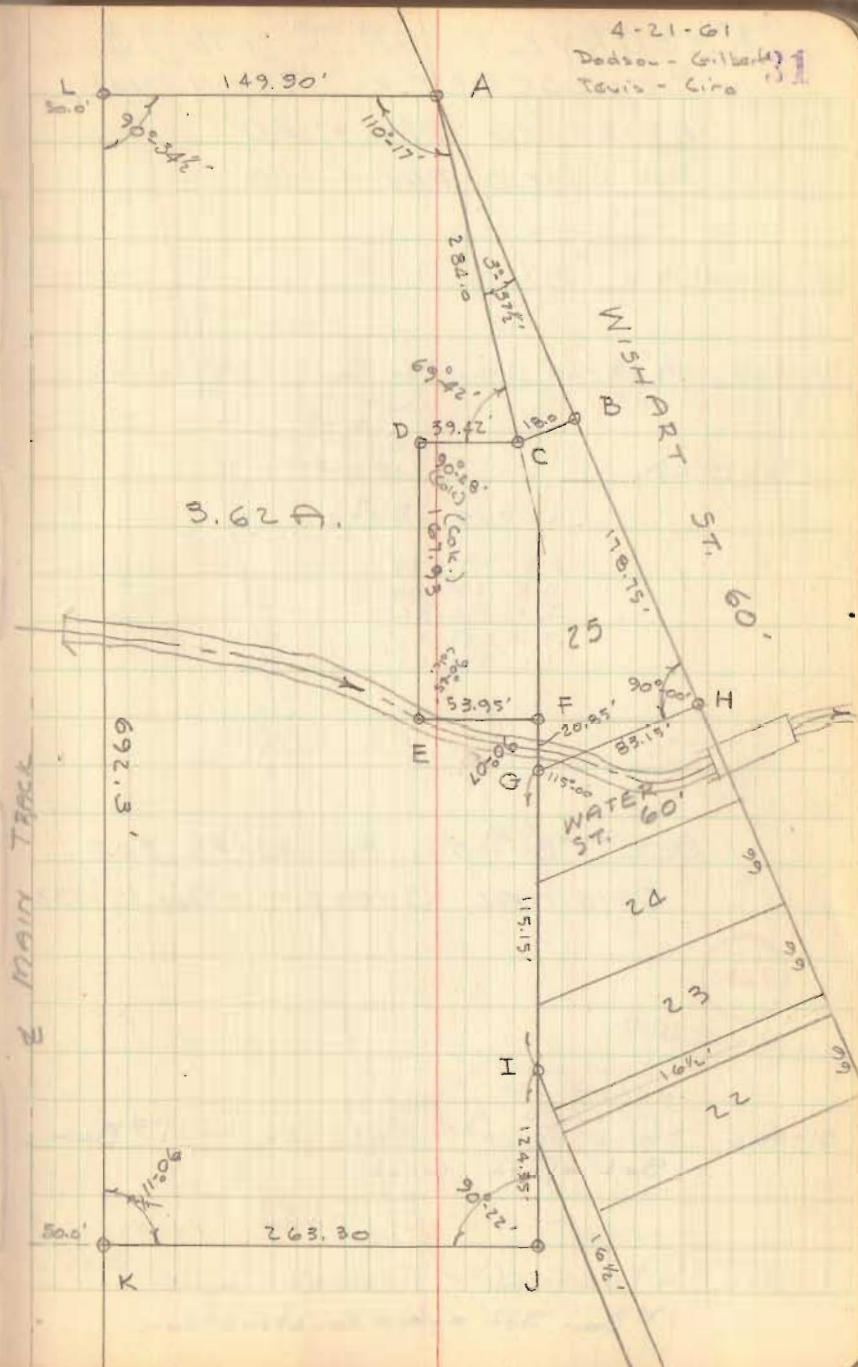
RAN RANDOM LINE FROM D TO E

SEE PG 40 THIS BOOK FOR
DETAIL "E-F-G-H-J"

SEE F.B # 493, PG. 25

3462

INDEXED ON MAP



HUNTSVILLE SURVEY
CONT'D FROM PG. 31

- A = $\frac{1}{2}$ " ϕ Bar found - Cor. T. Bailey
 B = $\frac{3}{4}$ " Pipe Set, on line A-C
 C = $\frac{1}{2}$ " ϕ Bar Found - Cor. T. Bailey
 D = $\frac{5}{8}$ " Bar Found - set by D.L.D.
 E = $\frac{5}{8}$ " Bar Found - " " " ϵ = 16 $\frac{1}{2}$ " Alley
 F = $\frac{3}{4}$ " Pipe Set - on Line D-E
 G = 1" Pipe Found - "P" in FB# 493/25
 H = $\frac{3}{4}$ " pipe Set on Line "F-B"
 I = $\frac{3}{4}$ " pipe Set - ("D" - FB# 493/25) (Did not find pins as indicated)
 J = $\frac{3}{4}$ " pipe Set on Line "H-F" & "K-L"
 K = $\frac{3}{4}$ " ϕ Bar Found - "N" FB# 493/25
 L = $\frac{3}{4}$ " ϕ Found in Creek - "M" FB 493/25

USED LINE C-A AS N. LINE OF
R.R. PROPERTY

Dodson
Tewis
Circ

5-11-61

40

