

The following described real estate situated in the Township of Leebur, County of Logan, State of Ohio and being a part of Virginia Military Survey No. 9925-9946-10121 and being more particularly described as follows:

Beginning at a R.R. Spike in the center line of T. R. No. 95, being Station No. 63+19 as shown in Logan County Engineers Field Book No. 574, Page 67 and being the northeast corner to Jenkins tract and being the southeast corner to Edith E. Tracey's tract;

Thence with the line between Jenkins and Tracey, S. 82° 13' W. 635.0 feet to an iron bar set in the north Right of Way line of U.S.R. No. 33, said iron bar being 65.00 feet northeast of Station 398+73.13 as shown on Plan L-39, Logan County Engineers Office, passing through an iron bar at 25.0 feet;

Thence with the north Right of Way line of U.S.R. No. 33 the following five courses and distances, S. 66° 01' E. 26.87 feet to a concrete right of Way monument, S. 67° 27' E. 400.12 feet to a concrete right of way monument, S. 63° 00' E. 190.26 feet to a concrete right of way monument, N. 46° 00' E. 90.90 feet to a concrete right of way monument and N. 82° 30' E. 30.01 feet to a R.R. Spike set in the center line of T. R. No. 95;

Thence with the center line of T. R. No. 95, N. 7° 30' W. 265.95 feet to the place of beginning, containing 2.60 Acres, more or less.

It is the intention of this survey to determine the correct amount of acreage remaining after the deduction of Right of Way taken for U.S.R. No. 33 as described in Vol. 259 Page 513 Logan County Deed Records, under Parcel No. 53LA of U.S.R. No. 33 survey.

I hereby certify that this is a true and accurate description of a survey made by me on October 19, 1968.



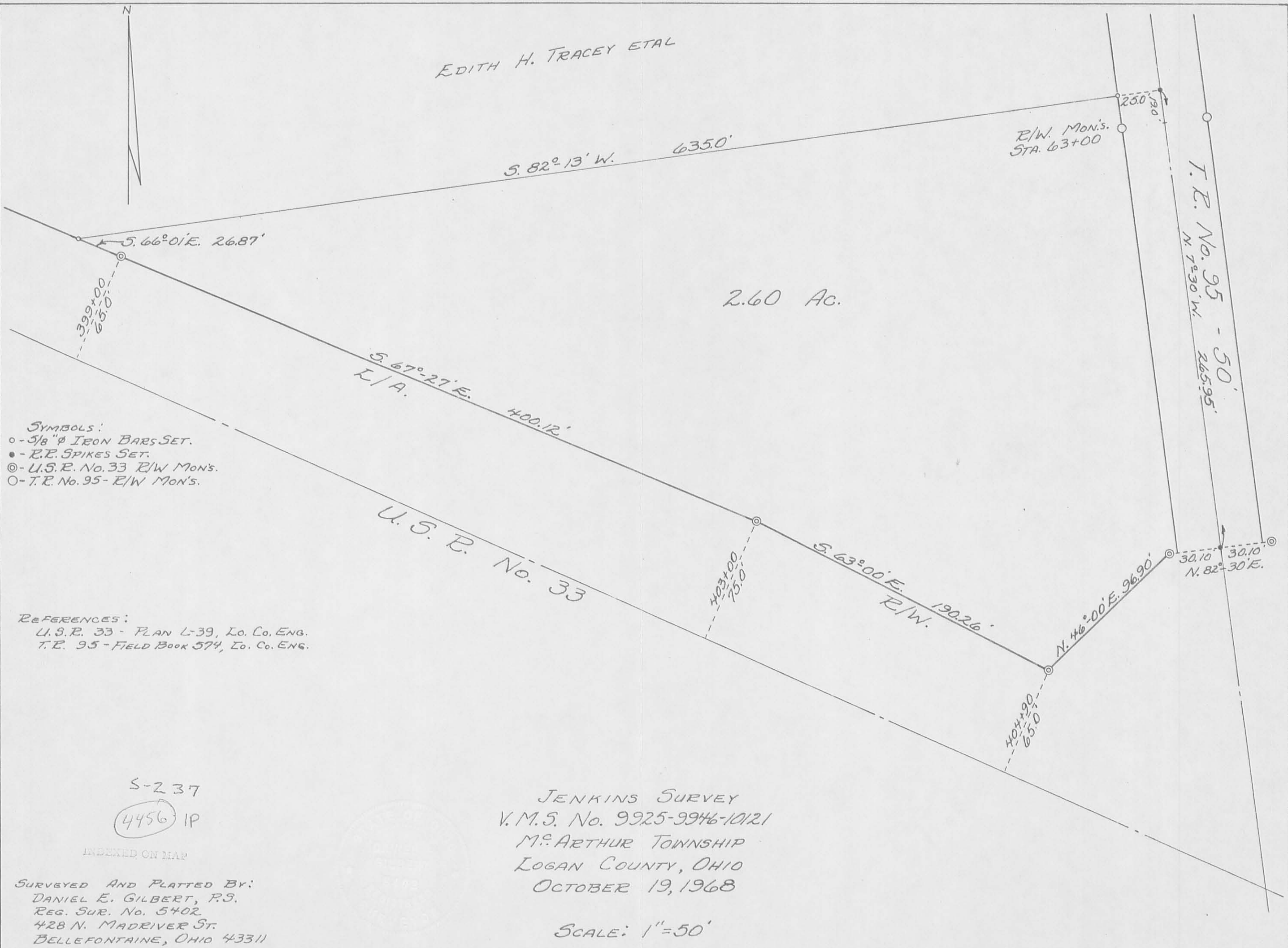
Daniel E. Gilbert
 Daniel E. Gilbert, P.S.
 Reg. Sur. No. 5402
 428 N. Madriver St.
 Bellefontaine, Ohio 43311
 Phone: 513-593-1300

4456 ID

RECORDED ON MAP

EDITH H. TRACEY ETAL

2.60 Ac.



- SYMBOLS:**
- - 3/8" φ IRON BARS SET.
 - - R.E. SPIKES SET.
 - ⊙ - U.S.P. No. 33 R/W MON'S.
 - - I.R. No. 95 - R/W MON'S.

- REFERENCES:**
- U.S.P. 33 - PLAN L-39, LO. CO. ENG.
 - I.R. 95 - FIELD BOOK 574, LO. CO. ENG.

S-237
 (4456) IP

INDEXED ON MAP

SURVEYED AND PLATTED BY:
 DANIEL E. GILBERT, P.S.
 REG. SUR. NO. 5402
 428 N. MADRIVER ST.
 BELLEFONTAINE, OHIO 43311

JENKINS SURVEY
 V.M.S. No. 9925-9946-10121
 M^cARTHUR TOWNSHIP
 LOGAN COUNTY, OHIO
 OCTOBER 19, 1968

SCALE: 1" = 50'

EDITH H. TRACEY ETAL



S. 82°-13' W. 635.0'

R/W. MON'S.
STA. 63+00

S. 66°-01' E. 26.87'

2.60 AC.

T.R. No. 95 - 50'
N. 72°-30' W. 265.95'

S. 67°-27' E. 400.12'
L/A.

- SYMBOLS:
- - 5/8" φ IRON BARS SET.
 - - R.R. SPIKES SET.
 - ⊙ - U.S.R. No. 33 R/W MON'S.
 - - T.R. No. 95 - R/W MON'S.

- REFERENCES:
- U.S.R. 33 - PLAN L-39, Lo. Co. ENG.
 - T.R. 95 - FIELD BOOK 574, Lo. Co. ENG.

U.S.R. No. 33

403+00
75.0'

S. 63°-00' E. 190.26'
R/W.

N. 46°-00' E. 96.90'

30.10' 30.10'
N. 82°-30' E.

404+90
65.0'

JENKINS SURVEY
V.M.S. No. 9925-9946-10121
M^c. ARTHUR TOWNSHIP
LOGAN COUNTY, OHIO
OCTOBER 19, 1968

SCALE: 1"=50'

SURVEYED AND PLATTED BY:
DANIEL E. GILBERT, P.S.
REG. SUR. No. 5402
428 N. MADRIVER ST.
BELLEFONTAINE, OHIO 43311