

Mast to LeFever Survey Description
May, 1975

Being situated in M^o Arthur Township, Logan County, Ohio; and being a part of V.M.S. #9903 - 9928.

Beginning at a iron in the center of Township Road 221 at the south west corner of a 48.42 acre tract.

Thence with the center of Township Road 221 N 52^o - 08'W 196.4 feet to a iron.

Thence again with the center of Township Road 221 S 71^o - 22'W 345.0 feet to a point in Carroll Ditch.

The following three courses follow the center of Carroll Ditch.

Thence N 49^o - 02'E 259.0 feet.

Thence N 61^o - 40'E 405.0 feet.

Thence N 87^o - 35'E 360.0 feet to a point in the west line of said 48.42 acre tract.

Thence with the west line of the 48.42 acre tract S 10^o - 55'E 232.0 feet to the place of beginning.

Containing 2.64 acres more or less. Being surveyed from a 40.00 acre tract.

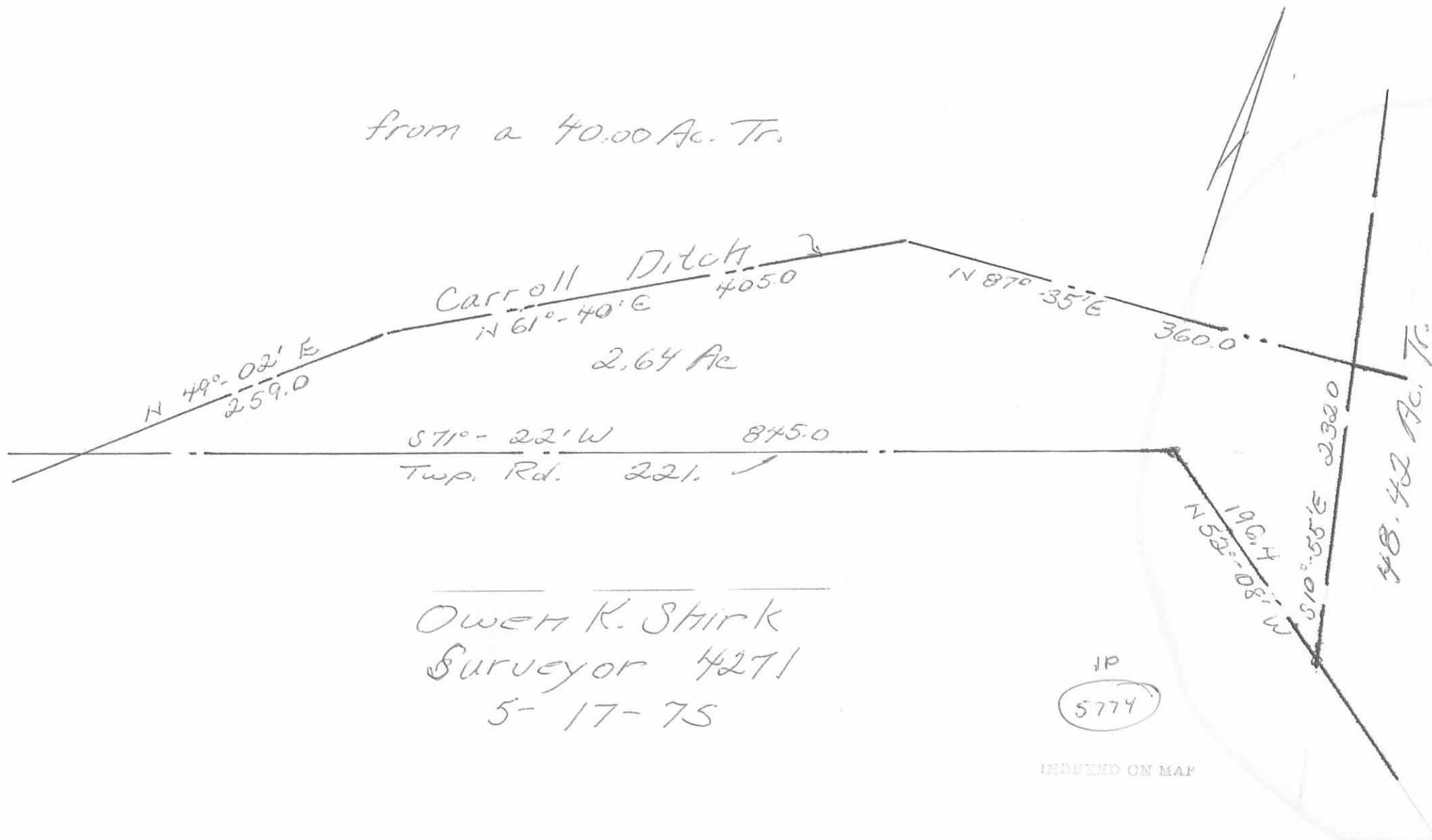
Owen K. Shirk
Surveyor 4271

ID

5774

MAST TO LEFEVER SHIRK
 M^c ARTHUR TWP., LOGAN CO., OHIO
 V. M. S. 9903 - 9928 - 1" = 100'

from a 40.00 Ac. Tr.



Owen K. Shirk
 Surveyor 4271
 5-17-75