

REC'D 5-29-02 SMJ OK

Lee Surveying and Mapping Co., Inc.

Land Surveys • Topography • Subdivisions • Construction Layout

117 N. Madriver St.
Bellefontaine OH 43311



Phone: (937) 593-7335
Fax: (937) 593-7444

FANSLER 3.233 ACRES TRACT A

Lying in Virginia Military Survey 9884, McArthur Township, Logan County, Ohio.

Being out of the Nancy S. Fansler original 68.486 acre tract as deeded and described in Official Record 429, Pg. 270 of the Logan County Records of Deeds and being more particularly described as follows:

Beginning at a 3/4 inch iron pipe found on the south line of McArthur Township at the intersection of the center-lines of County Highway 57 and County Highway 49 on County Highway 49 center-line station 0+00 (Logan County Engineer's Field Book 703, Pg 6).

THENCE, with the west line of Virginia Military Survey 9884 and the center-line of County Highway 49 (40 feet wide), N 6°-36'-25" W, a distance of 2387.50 feet to a MAG nail set at the TRUE POINT OF BEGINNING.

THENCE, with the west line of Virginia Military Survey 9884 and the center-line of County Highway 49, N 6°-36'-25" W, a distance of 218.00 feet to a railroad spike set.

THENCE, with the south line of the Cherokee Hills, Inc. 172 acre tract (O.R. 395, Pg. 558), N 82°-35'-35" E, a distance of 649.96 feet to a 5/8 inch iron rod set, passing a 5/8 inch iron rod set at 20.00 feet.

THENCE, S 6°-36'-25" E, a distance of 215.42 feet to a 5/8 inch iron rod set.

THENCE, S 82°-21'-55" W, a distance of 650.00 feet to the point of beginning, passing a 5/8 inch iron rod set at 630.00 feet.

Containing 3.233 acres, of which 0.100 acre is within the highway right-of-way.

The basis for bearings is the center-line of County Highway 49, being N 6°-36'-25" W, and all other bearings are from angles and distances measured in a field survey by Lee Surveying and Mapping Co., Inc. on May 22, 2002.

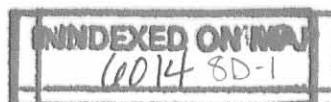
Description prepared by:



ORIGINAL STAMP IN GREEN

[Signature]
Jeffrey I. Lee
Professional Surveyor 6359
May 23, 2002

L-2981



REC'D 5-29-02 SML/AL

Lee Surveying and Mapping Co., Inc.

Land Surveys • Topography • Subdivisions • Construction Layout

117 N. Madriver St.
Bellefontaine OH 43311



Phone: (937) 593-7335
Fax: (937) 593-7444

FANSLER 7.676 ACRES TRACT B

Lying in Virginia Military Survey 9884, McArthur Township, Logan County, Ohio.

Being out of the Nancy S. Fansler original 68.486 acre tract as deeded and described in Official Record 429, Pg. 270 of the Logan County Records of Deeds and being more particularly described as follows:

Beginning at a 3/4 inch iron pipe found on the south line of McArthur Township at the intersection of the center-lines of County Highway 57 and County Highway 49 on County Highway 49 center-line station 0+00 (Logan County Engineer's Field Book 703, Pg 6).

THENCE, with the west line of Virginia Military Survey 9884 and the center-line of County Highway 49 (40 feet wide), N 6°-36'-25" W, a distance of 2237.30 feet to a MAG nail set at the TRUE POINT OF BEGINNING.

THENCE, with the west line of Virginia Military Survey 9884 and the center-line of County Highway 49, N 6°-36'-25" W, a distance of 150.20 feet to a MAG nail set.

THENCE, N 82°-21'-55" E, a distance of 650.00 feet to a 5/8 inch iron rod set, passing a 5/8 inch iron rod set at 20.00 feet.

THENCE, N 6°-36'-25" W, a distance of 215.42 feet to a 5/8 inch iron rod set.

THENCE, with the south line of the Cherokee Hills, Inc. 172 acre tract (O.R. 395, Pg. 558), N 82°-35'-35" E, a distance of 649.96 feet to a 5/8 inch iron rod set.

THENCE, S 6°-36'-25" E, a distance of 363.03 feet to a 5/8 inch iron rod set.

THENCE, S 82°-21'-55" W, a distance of 1300.00 feet to the point of beginning, passing a 5/8 inch iron rod set at 1280.00 feet.

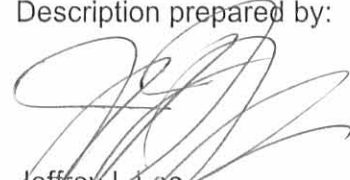
Containing 7.676 acres, of which 0.069 acre is within the highway right-of-way.

The basis for bearings is the center-line of County Highway 49, being N 6°-36'-25" W, and all other bearings are from angles and distances measured in a field survey by Lee Surveying and Mapping Co., Inc. on May 22, 2002.

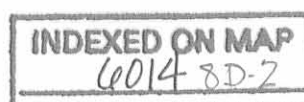
Description prepared by:



ORIGINAL STAMP IN GREEN


Jeffrey I. Lee
Professional Surveyor 6359
May 23, 2002

L-2981



REC'D 5-29-02 SJM/OK
Lee Surveying and Mapping Co., Inc.

Land Surveys • Topography • Subdivisions • Construction Layout

117 N. Madriver St.
Bellefontaine OH 43311



Phone: (937) 593-7335
Fax: (937) 593-7444

**FANSLER
12.120 ACRES
TRACT C**

Lying in Virginia Military Survey 9884, McArthur Township, Logan County, Ohio.

Being out of the Nancy S. Fansler original 68.486 acre tract as deeded and described in Official Record 429, Pg. 270 of the Logan County Records of Deeds and being more particularly described as follows:

Beginning at a 3/4 inch iron pipe found on the south line of McArthur Township at the intersection of the center-lines of County Highway 57 and County Highway 49 on County Highway 49 center-line station 0+00 (Logan County Engineer's Field Book 703, Pg 6).

THENCE, with the west line of Virginia Military Survey 9884 and the center-line of County Highway 49 (40 feet wide), N 6°-36'-25" W, a distance of 2087.10 feet to a MAG nail set at the TRUE POINT OF BEGINNING.

THENCE, with the west line of Virginia Military Survey 9884 and the center-line of County Highway 49, N 6°-36'-25" W, a distance of 150.20 feet to a MAG nail set.

THENCE, N 82°-21'-55" E, a distance of 1300.00 feet to a 5/8 inch iron rod set, passing a 5/8 inch iron rod set at 20.00 feet.

THENCE, N 6°-36'-25" W, a distance of 363.03 feet to a 5/8 inch iron rod set.

THENCE, with the south line of the Cherokee Hills, Inc. 172 acre tract (O.R. 395, Pg. 558), N 82°-35'-35" E, a distance of 649.96 feet to a 5/8 inch iron rod set.

THENCE, S 6°-36'-25" E, a distance of 510.65 feet to a 5/8 inch iron rod set.

THENCE, S 82°-21'-55" W, a distance of 1950.00 feet to the point of beginning, passing a 5/8 inch iron rod set at 1930.00 feet.

Containing 12.120 acres, of which 0.069 acre is within the highway right-of-way.

The basis for bearings is the center-line of County Highway 49, being N 6°-36'-25" W, and all other bearings are from angles and distances measured in a field survey by Lee Surveying and Mapping Co., Inc. on May 22, 2002.

Description prepared by:

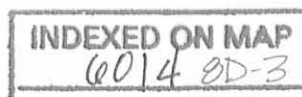


ORIGINAL STAMP IN GREEN

A handwritten signature in black ink, appearing to read 'Jeffrey I. Lee'.

Jeffrey I. Lee
Professional Surveyor 6359
May 23, 2002

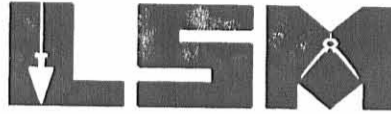
L-2981



REC'D 5-29-02 SWM OK
Lee Surveying and Mapping Co., Inc.

Land Surveys • Topography • Subdivisions • Construction Layout

117 N. Madriver St.
Bellefontaine OH 43311



Phone: (937) 593-7335
Fax: (937) 593-7444

**FANSLER
18.993 ACRES
TRACT D**

Lying in Virginia Military Survey 9884, McArthur Township, Logan County, Ohio.

Being out of the Nancy S. Fansler original 68.486 acre tract as deeded and described in Official Record 429, Pg. 270 of the Logan County Records of Deeds and being more particularly described as follows:

Beginning at a 3/4 inch iron pipe found on the south line of McArthur Township at the intersection of the center-lines of County Highway 57 and County Highway 49 on County Highway 49 center-line station 0+00 (Logan County Engineer's Field Book 703, Pg 6).

THENCE, with the west line of Virginia Military Survey 9884 and the center-line of County Highway 49 (40 feet wide), N 6°-36'-25" W, a distance of 1936.90 feet to a MAG nail set at the TRUE POINT OF BEGINNING.

THENCE, with the west line of Virginia Military Survey 9884 and the center-line of County Highway 49, N 6°-36'-25" W, a distance of 150.20 feet to a MAG nail set.

THENCE, N 82°-21'-55" E, a distance of 1950.00 feet to a 5/8 inch iron rod set, passing a 5/8 inch iron rod set at 20.00 feet.

THENCE, N 6°-36'-25" W, a distance of 510.65 feet to a 5/8 inch iron rod set.

THENCE, with the south line of the Cherokee Hills, Inc. 172 acre tract (O.R. 395, Pg. 558), N 82°-35'-35" E, a distance of 532.92 feet to a 5/8 inch iron rod set.

THENCE, with the east line of the said 172 acre tract, N 8°-06'-15" W, a distance of 460.50 feet to a 5/8 inch iron rod set.

THENCE, with a south line of the David F. Haley original 117.61 acre tract (O.R. 216, Pg. 681), N 87°-06'-05" E, a distance of 167.57 feet to a 5/8 inch iron rod set.

THENCE, with a west line of the said 117.61 acre tract and a west line of the R. Dean Dodds 80.359 acre tract (O.R. 318, Pg. 509), S 7°-14'-49" E, a distance of 1107.00 feet to a 5/8 inch iron rod found.

THENCE, with the north line of the said 80.359 acre tract, S 82°-28'-19" W, a distance of 917.02 feet to a 5/8 inch iron rod found.

THENCE, S 82°-21'-55" W, a distance of 1733.48 feet to the point of beginning, passing a 5/8 inch iron rod set at 1713.48 feet.


Containing 18.993 acres, of which 0.069 acre is within the highway right-of-way.

The basis for bearings is the center-line of County Highway 49, being N 6°-36'-25" W, and all other bearings are from angles and distances measured in a field survey by Lee Surveying and Mapping Co., Inc. on May 22, 2002.

Description prepared by:



ORIGINAL STAMP IN GREEN


Jeffrey I. Lee
Professional Surveyor 6359
May 23, 2002



L-2981

REC'D 5-29-02 SAM OK
Lee Surveying and Mapping Co., Inc.

Land Surveys • Topography • Subdivisions • Construction Layout

117 N. Madriver St.
Bellefontaine OH 43311



Phone: (937) 593-7335
Fax: (937) 593-7444

**FANSLER
10.169 ACRES
TRACT E**

Lying in Virginia Military Survey 9884, McArthur Township, Logan County, Ohio.

Being out of the Nancy S. Fansler original 68.486 acre tract as deeded and described in Official Record 429, Pg. 270 of the Logan County Records of Deeds and being more particularly described as follows:

Beginning at a 3/4 inch iron pipe found on the south line of McArthur Township at the intersection of the center-lines of County Highway 57 and County Highway 49 on County Highway 49 center-line station 0+00 (Logan County Engineer's Field Book 703, Pg 6).

THENCE, with the west line of Virginia Military Survey 9884 and the center-line of County Highway 49 (40 feet wide), N 6°-36'-25" W, a distance of 1786.70 feet to a MAG nail set at the TRUE POINT OF BEGINNING.

THENCE, with the west line of Virginia Military Survey 9884 and the center-line of County Highway 49, N 6°-36'-25" W, a distance of 150.20 feet to a MAG nail set.

THENCE, N 82°-21'-55" E, a distance of 1733.48 feet to a 5/8 inch iron rod found, passing a 5/8 inch iron rod set at 20.00 feet.

THENCE, with the east line of the R. Dean Dodds 80.359 acre tract (O.R. 318, Pg. 509), S 6°-56'-50" E, a distance of 550.50 feet to a 5/8 inch iron rod found.

THENCE, with the north line and north line extended of the Dale Edwin Hurley 14.591 acre tract (O.R. 38, Pg. 132), S 84°-16'-04" W, a distance of 465.75 feet to a 5/8 inch iron rod set, passing a 5/8 inch iron rod found on a northwest corner of the said 14.591 acre tract at 298.82 feet.


THENCE, N 6°-46'-50" W, a distance of 384.86 feet to a 5/8 inch iron rod set.

THENCE, S 82°-21'-55" W, a distance of 1269.82 feet to the point of beginning, passing a 5/8 inch iron rod set at 1249.82 feet.

Containing 10.169 acres, of which 0.069 acre is within the highway right-of-way.

The basis for bearings is the center-line of County Highway 49, being N 6°-36'-25" W, and all other bearings are from angles and distances measured in a field survey by Lee Surveying and Mapping Co., Inc. on May 22, 2002.

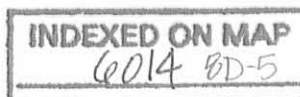
Description prepared by:


Jeffrey I. Lee
Professional Surveyor 6359
May 23, 2002



ORIGINAL STAMP IN GREEN

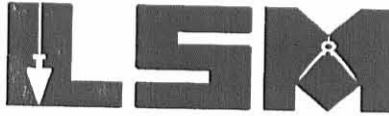
L-2981



REC'D 5-29-02 SML/ok
Lee Surveying and Mapping Co., Inc.

Land Surveys • Topography • Subdivisions • Construction Layout

117 N. Madriver St.
Bellefontaine OH 43311



Phone: (937) 593-7335
Fax: (937) 593-7444

**FANSLER
9.393 ACRES
TRACT F**

Lying in Virginia Military Survey 9884, McArthur Township, Logan County, Ohio.

Being out of the Nancy S. Fansler original 68.486 acre tract as deeded and described in Official Record 429, Pg. 270 of the Logan County Records of Deeds and being more particularly described as follows:

Beginning at a 3/4 inch iron pipe found on the south line of McArthur Township at the intersection of the center-lines of County Highway 57 and County Highway 49 on County Highway 49 center-line station 0+00 (Logan County Engineer's Field Book 703, Pg 6).

THENCE, with the west line of Virginia Military Survey 9884 and the center-line of County Highway 49 (40 feet wide), N 6°-36'-25" W, a distance of 1636.50 feet to a MAG nail set at the TRUE POINT OF BEGINNING.

THENCE, with the west line of Virginia Military Survey 9884 and the center-line of County Highway 49, N 6°-36'-25" W, a distance of 150.20 feet to a MAG nail set.

THENCE, N 82°-21'-55" E, a distance of 1269.82 feet to a 5/8 inch iron rod set, passing a 5/8 inch iron rod set at 20.00 feet.

THENCE, S 6°-46'-50" E, a distance of 643.16 feet to a 5/8 inch iron rod found, passing a 5/8 inch iron rod set at 384.86 feet.

THENCE, with the north line of the Larry J. Hurley original 28.528 acre tract (O.R. 293, Pg. 464), N 82°-09'-39" W, a distance of 395.83 feet to a 5/8 inch iron rod set.

THENCE, with the north line of the William R. Markley 7.580 acre tract (O.R. 461, Pg. 965), N 87°-33'-51" W, a distance of 135.04 feet to a 5/8 inch iron rod set.

THENCE, N 6°-36'-25" W, a distance of 363.75 feet to a 5/8 inch iron rod set.

THENCE, S 82°-21'-55" W, a distance of 755.00 feet to the point of beginning, passing a 5/8 inch iron rod set at 735.00 feet.

Containing 9.393 acres, of which 0.069 acre is within the highway right-of-way.

The basis for bearings is the center-line of County Highway 49, being N 6°-36'-25" W, and all other bearings are from angles and distances measured in a field survey by Lee Surveying and Mapping Co., Inc. on May 22, 2002.

Description prepared by:

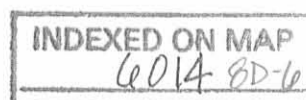


ORIGINAL STAMP IN GREEN

A handwritten signature in black ink, appearing to read 'J. Lee', written over the typed name and title.

Jeffrey I. Lee
Professional Surveyor 6359
May 23, 2002

L-2981

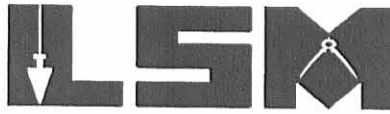


REC'D 5-29-02 SML OK

Lee Surveying and Mapping Co., Inc.

Land Surveys • Topography • Subdivisions • Construction Layout

117 N. Madriver St.
Bellefontaine OH 43311



Phone: (937) 593-7335
Fax: (937) 593-7444

FANSLER 5.320 ACRES TRACT G

Lying in Virginia Military Survey 9884, McArthur Township, Logan County, Ohio.

Being out of the Nancy S. Fansler original 68.486 acre tract as deeded and described in Official Record 429, Pg. 270 of the Logan County Records of Deeds and being more particularly described as follows:

Beginning at a 3/4 inch iron pipe found on the south line of McArthur Township at the intersection of the center-lines of County Highway 57 and County Highway 49 on County Highway 49 center-line station 0+00 (Logan County Engineer's Field Book 703, Pg 6).

THENCE, with the west line of Virginia Military Survey 9884 and the center-line of County Highway 49 (40 feet wide), N 6°-36'-25" W, a distance of 1382.80 feet to a railroad spike set at the TRUE POINT OF BEGINNING.

THENCE, with the west line of Virginia Military Survey 9884 and the center-line of County Highway 49, N 6°-36'-25" W, a distance of 253.70 feet to a MAG nail set.

THENCE, N 82°-21'-55" E, a distance of 755.00 feet to a 5/8 inch iron rod set, passing a 5/8 inch iron rod set at 20.00 feet.

THENCE, S 6°-36'-25" E, a distance of 363.75 feet to a 5/8 inch iron rod set.

THENCE, with the north line of the William R. Markley 7.580 acre tract (O.R. 461, Pg. 965), N 87°-33'-51" W, a distance of 38.56 feet to a 5/8 inch iron rod set.

THENCE, with the north line of the said 7.580 acre tract, S 87°-01'-38" W, a distance of 371.51 feet to a 5/8 inch iron rod found.

THENCE, with a northeast line of the Janet E. Markley 0.480 acre tract (O.R. 326, Pg. 002, Tract II), N 52°-40'-28" W, a distance of 95.92 feet to a 5/8 inch iron rod found.

THENCE, with the north line of the said 0.480 acre tract, S 83°-27'-55" W, a distance of 276.96 feet to the point of beginning, passing a 5/8 inch iron rod found at 256.96 feet.

Containing 5.320 acres, of which 0.117 acre is within the highway right-of-way.

The basis for bearings is the center-line of County Highway 49, being N 6°-36'-25" W, and all other bearings are from angles and distances measured in a field survey by Lee Surveying and Mapping Co., Inc. on May 22, 2002.

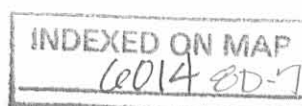
Description prepared by:



ORIGINAL STAMP IN GREEN

[Signature]
Jeffrey I. Lee
Professional Surveyor 6359
May 23, 2002

L-2981



RECID 5-29-02 EMM OK
Lee Surveying and Mapping Co., Inc.

Land Surveys • Topography • Subdivisions • Construction Layout

117 N. Madriver St.
Bellefontaine OH 43311



Phone: (937) 593-7335
Fax: (937) 593-7444

**FANSLER
1.006 ACRES**

Lying in Virginia Military Survey 9884, McArthur Township, Logan County, Ohio.

Being out of the Nancy S. Fansler original 68.486 acre tract as deeded and described in Official Record 429, Pg. 270 of the Logan County Records of Deeds and being more particularly described as follows:

Beginning at a 5/8 inch iron rod found on the northeast corner of the Dale Edwin Hurley 14.591 acre tract (O.R. 38, Pg. 132) and a southeast corner of the said 68.486 acre tract.

THENCE, with the north line of the said 14.591 acre tract and a south line of the said 68.486 acre tract, S 84°-16'-04" W, a distance of 298.82 feet to a 5/8 inch iron rod found on a northwest corner of the said 14.591 acre tract at the TRUE POINT OF BEGINNING.

THENCE, with a west line of the said 14.591 acre tract, S 6°-49'-47" E, a distance of 266.69 feet to a 5/8 inch iron rod found.

THENCE, with a north line of the said 14.591 acre tract, S 87°-08'-19" W, a distance of 167.53 feet to a 5/8 inch iron rod found at a northwest corner of the said 14.591 acre tract.

THENCE, N 6°-46'-50" W, a distance of 258.29 feet to a 5/8 inch iron rod set.

THENCE, N 84°-16'-04" E, a distance of 166.93 feet to the point of beginning.

Containing 1.006 acres.

The basis for bearings is the center-line of County Highway 49, being N 6°-36'-25" W, and all other bearings are from angles and distances measured in a field survey by Lee Surveying and Mapping Co., Inc. on May 22, 2002.

Description prepared by:

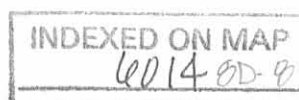


ORIGINAL STAMP IN GREEN

A handwritten signature in black ink, appearing to read 'Jeffrey I. Lee'.

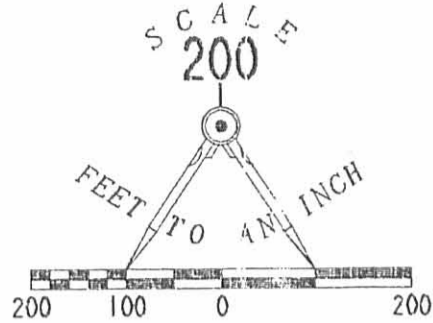
Jeffrey I. Lee
Professional Surveyor 6359
May 23, 2002

L-2981



LEGEND

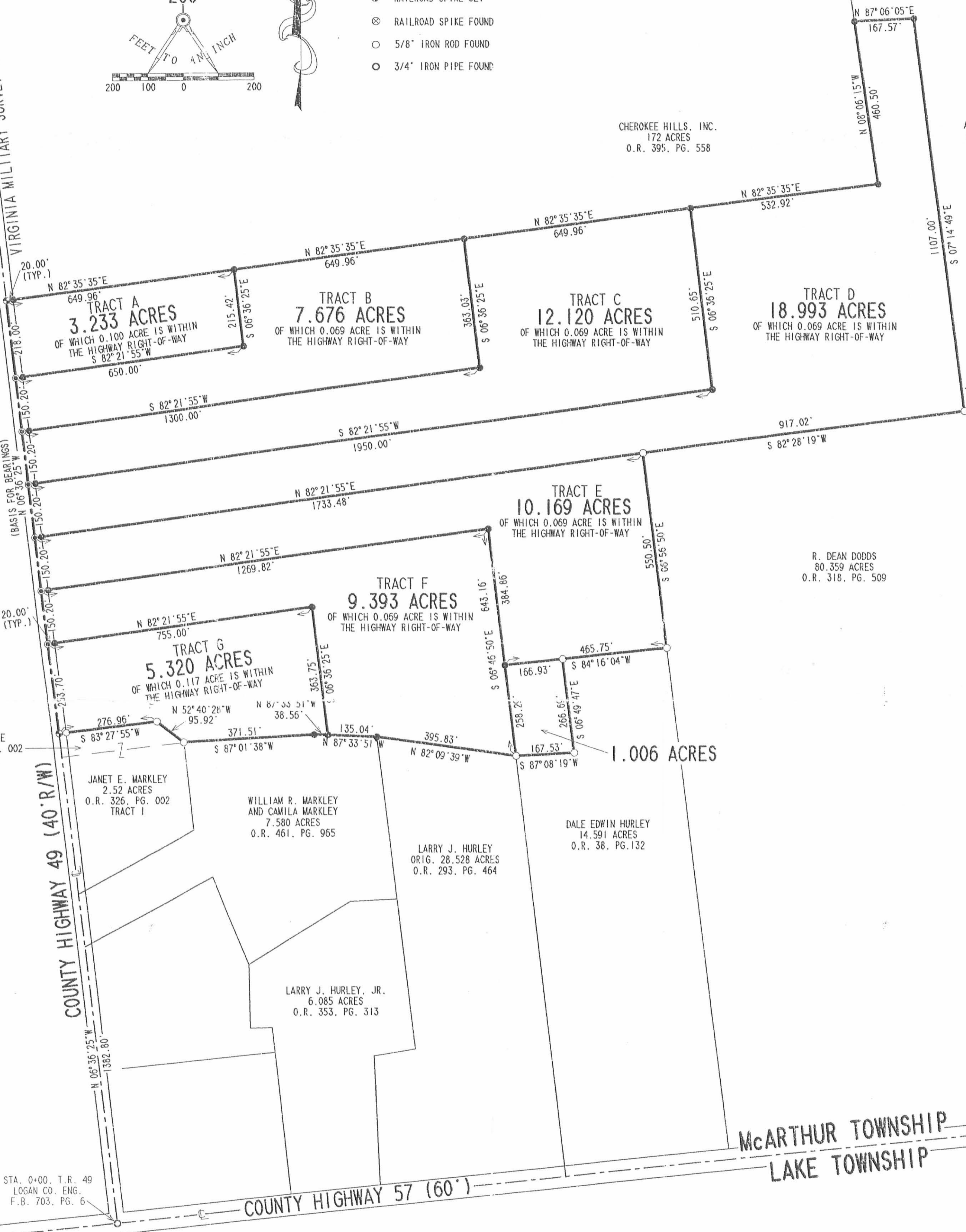
- 5/8" IRON ROD SET
- MAG NAIL SET
- ⊕ RAILROAD SPIKE SET
- ⊗ RAILROAD SPIKE FOUND
- 5/8" IRON ROD FOUND
- 3/4" IRON PIPE FOUND



CHEROKEE HILLS, INC.
172 ACRES
O.R. 395, PG. 558

DAVID F. HALEY
AND BRENDA G. HALEY
ORIG. 117.61 ACRES
O.R. 216, PG. 681

VIRGINIA MILITARY SURVEY 9883
VIRGINIA MILITARY SURVEY 9884



0.480 ACRE
O.R. 326, PG. 002
TRACT II

JANET E. MARKLEY
2.52 ACRES
O.R. 326, PG. 002
TRACT I

WILLIAM R. MARKLEY
AND CAMILA MARKLEY
7.580 ACRES
O.R. 461, PG. 965

LARRY J. HURLEY
ORIG. 28.528 ACRES
O.R. 293, PG. 464

DALE EDWIN HURLEY
14.591 ACRES
O.R. 38, PG. 132

LARRY J. HURLEY, JR.
6.085 ACRES
O.R. 353, PG. 313

R. DEAN DODDS
80.359 ACRES
O.R. 318, PG. 509

McARTHUR TOWNSHIP
LAKE TOWNSHIP

SURVEY OF EIGHT TRACTS
OUT OF THE NANCY S. FANSLER
ORIGINAL 68.486 ACRES
OFFICIAL RECORD 429, PAGE 270
VIRGINIA MILITARY SURVEY 9884
McARTHUR TOWNSHIP
LOGAN COUNTY, OHIO

SURVEYED BY:



JEFFREY I. LEE
PROFESSIONAL SURVEYOR 6359
MAY 22, 2002

COPYRIGHT 2002 BY:
LEE SURVEYING & MAPPING CO., INC.
117 North Modriver Street
BELLEFONTAINE, OHIO 43311
(937) 593-7335

2 WORKING DAYS
BEFORE YOU DIG
CALL TOLL FREE 800-362-2764
OHIO UTILITIES PROTECTION SERVICE.

INDEXED ON MAP
6014 87

ORIGINAL STAMP IN GREEN

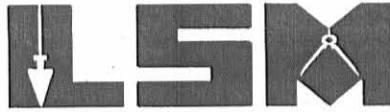
D305 DAHRLY DODDS.DAT L-2981

Received 8-7-02 OK gwl

Lee Surveying and Mapping Co., Inc.

Land Surveys • Topography • Subdivisions • Construction Layout

117 N. Madriver St.
Bellefontaine OH 43311



Phone: (937) 593-7335
Fax: (937) 593-7444

FANSLER 42.022 ACRES

Lying in Virginia Military Survey 9884, McArthur Township, Logan County, Ohio.

Being out of the Nancy S. Fansler original 68.486 acre tract as deeded and described in Official Record 429, Pg. 270 of the Logan County Records of Deeds and being more particularly described as follows:

Beginning at a 3/4 inch iron pipe found on the south line of McArthur Township at the intersection of the center-lines of County Highway 57 and County Highway 49 on County Highway 49 center-line station 0+00 (Logan County Engineer's Field Book 703, Pg 6).

THENCE, with the west line of Virginia Military Survey 9884 and the center-line of County Highway 49 (40 feet wide), N 6°-36'-25" W, a distance of 1936.90 feet to a MAG nail set at the TRUE POINT OF BEGINNING.

THENCE, with the west line of Virginia Military Survey 9884 and the center-line of County Highway 49, N 6°-36'-25" W, a distance of 668.60 feet to a railroad spike set.

THENCE, with the south line of the Cherokee Hills, Inc. 172 acre tract (O.R. 395, Pg. 558), N 82°-35'-35" E, a distance of 2482.80 feet to a 5/8 inch iron rod set, passing a 5/8 inch iron rod set at 20.00 feet.

THENCE, with the east line of the said 172 acre tract, N 8°-06'-15" W, a distance of 460.50 feet to a 5/8 inch iron rod set.

THENCE, with a south line of the David F. Haley original 117.61 acre tract (O.R. 216, Pg. 681), N 87°-06'-05" E, a distance of 167.57 feet to a 5/8 inch iron rod set.

THENCE, with a west line of the said 117.61 acre tract and a west line of the R. Dean Dodds 80.359 acre tract (O.R. 318, Pg. 509), S 7°-14'-49" E, a distance of 1107.00 feet to a 5/8 inch iron rod found.

THENCE, with the north line of the said 80.359 acre tract, S 82°-28'-19" W, a distance of 917.02 feet to a 5/8 inch iron rod found.

THENCE, S 82°-21'-55" W, a distance of 1733.48 feet to the point of beginning, passing a 5/8 inch iron rod set at 1713.48 feet.

Containing 42.022 acres, of which 0.307 acre is within the highway right-of-way.

The basis for bearings is the center-line of County Highway 49, being N 6°-36'-25" W, and all other bearings are from angles and distances measured in a field survey by Lee Surveying and Mapping Co., Inc. on May 22, 2002.

Description prepared by:



ORIGINAL STAMP IN GREEN

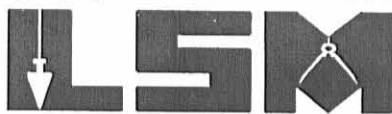
(Signature)
Jeffrey I. Lee
Professional Surveyor 6359
July 26, 2002

L-2981

Lee Surveying and Mapping Co., Inc.

Land Surveys • Topography • Subdivisions • Construction Layout

117 N. Madriver St.
Bellefontaine OH 43311



Phone: (937) 593-7335
Fax: (937) 593-7444

FANSLER 24.882 ACRES

Lying in Virginia Military Survey 9884, McArthur Township, Logan County, Ohio.

Being out of the Nancy S. Fansler original 68.486 acre tract as deeded and described in Official Record 429, Pg. 270 of the Logan County Records of Deeds and being more particularly described as follows:

Beginning at a 3/4 inch iron pipe found on the south line of McArthur Township at the intersection of the center-lines of County Highway 57 and County Highway 49 on County Highway 49 center-line station 0+00 (Logan County Engineer's Field Book 703, Pg 6).

THENCE, with the west line of Virginia Military Survey 9884 and the center-line of County Highway 49 (40 feet wide), N 6°-36'-25" W, a distance of 1382.80 feet to a railroad spike set at the TRUE POINT OF BEGINNING.

THENCE, with the west line of Virginia Military Survey 9884 and the center-line of County Highway 49, N 6°-36'-25" W, a distance of 554.10 feet to a MAG nail set.

THENCE, N 82°-21'-55" E, a distance of 1733.48 feet to a 5/8 inch iron rod found, passing a 5/8 inch iron rod set at 20.00 feet.

THENCE, with the east line of the R. Dean Dodds 80.359 acre tract (O.R. 318, Pg. 509), S 6°-56'-50" E, a distance of 550.50 feet to a 5/8 inch iron rod found.

THENCE, with the north line and north line extended of the Dale Edwin Hurley 14.591 acre tract (O.R. 38, Pg. 132), S 84°-16'-04" W, a distance of 465.75 feet to a 5/8 inch iron rod set, passing a 5/8 inch iron rod found on a northwest corner of the said 14.591 acre tract at 298.82 feet.

THENCE, S 6°-46'-50" E, a distance of 258.29 feet to a 5/8 inch iron rod found.

THENCE, with the north line of the Joseph G. Schottelkotte original 11.527 acre tract (O.R. 566, Pg. 739), N 82°-09'-39" W, a distance of 395.83 feet to a 5/8 inch iron rod set.

THENCE, with the north line of the William R. Markley 7.580 acre tract (O.R. 461, Pg. 965) the following two (2) courses:

N 87°-33'-51" W, a distance of 173.60 feet to a 5/8 inch iron rod set.

S 87°-01'-38" W, a distance of 371.51 feet to a 5/8 inch iron rod found.

THENCE, with a northeast line of the Janet E. Markley 0.480 acre tract (O.R. 326, Pg. 002, Tract II), N 52°-40'-28" W, a distance of 95.92 feet to a 5/8 inch iron rod found.

THENCE, with the north line of the said 0.480 acre tract, S 83°-27'-55" W, a distance of 276.96 feet to the point of beginning, passing a 5/8 inch iron rod found at 256.96 feet.

Containing 24.882 acres, of which 0.255 acre is within the highway right-of-way.

The basis for bearings is the center-line of County Highway 49, being N 6°-36'-25" W, and all other bearings are from angles and distances measured in a field survey by Lee Surveying and Mapping Co., Inc. on May 22, 2002.



ORIGINAL STAMP IN GREEN

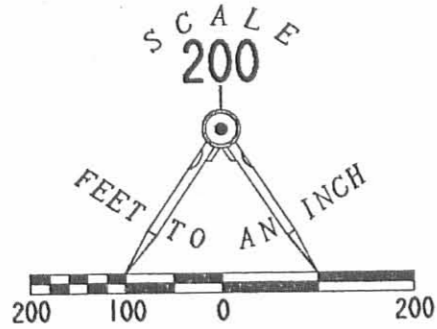
Description prepared by:

A handwritten signature in black ink, appearing to read 'Jeffrey I. Lee'.
Jeffrey I. Lee
Professional Surveyor 6359
July 26, 2002

L-2981

LEGEND

- 5/8" IRON ROD SET
- MAG NAIL SET
- ⊙ RAILROAD SPIKE SET
- ⊗ RAILROAD SPIKE FOUND
- 5/8" IRON ROD FOUND
- 3/4" IRON PIPE FOUND



VIRGINIA MILITARY SURVEY 9883

VIRGINIA MILITARY SURVEY 9884

CHEROKEE HILLS, INC.
172 ACRES
O.R. 395, PG. 558

DAVID F. HALEY
AND BRENDA G. HALEY
ORIG. 117.61 ACRES
O.R. 216, PG. 681

42.022 ACRES
OF WHICH 0.307 ACRE IS WITHIN
THE HIGHWAY RIGHT-OF-WAY

24.882 ACRES
OF WHICH 0.255 ACRE IS WITHIN
THE HIGHWAY RIGHT-OF-WAY

R. DEAN DODDS
80.359 ACRES
O.R. 318, PG. 509

1.006 ACRES

0.480 ACRE
O.R. 326, PG. 002
TRACT II

JANET E. MARKLEY
2.52 ACRES
O.R. 326, PG. 002
TRACT I

WILLIAM R. MARKLEY
AND CAMILA MARKLEY
7.580 ACRES
O.R. 451, PG. 965

JOSEPH G. SCHOTTELKOTTE
ORIG. 11.527 ACRES
O.R. 566, PG. 730

DALE EDWIN HURLEY
14.591 ACRES
O.R. 38, PG. 132

STA. 0+00, C.R. 49
LOGAN CO. ENG.
F.B. 703, PG. 6

McARTHUR TOWNSHIP
LAKE TOWNSHIP

COUNTY HIGHWAY 57 (60')

COUNTY HIGHWAY 49 (40' R/W)

SURVEY OF TWO TRACTS
OUT OF THE NANCY S. FANSLER
ORIGINAL 68.486 ACRES
OFFICIAL RECORD 429, PAGE 270
VIRGINIA MILITARY SURVEY 9884
McARTHUR TOWNSHIP
LOGAN COUNTY, OHIO

SURVEYED BY:

Jeffrey I. Lee

JEFFREY I. LEE
PROFESSIONAL SURVEYOR 6359
MAY 22, 2002
MAP PREPARED JULY 26, 2002



COPYRIGHT 2002 BY:
LEE SURVEYING & MAPPING CO., INC.
117 North Madriver Street
BELLEFONTAINE, OHIO 43311
(937) 593-7335

D305 DAHRLEY2 L-2981
DODDS.DAT

2 WORKING DAYS
BEFORE YOU DIG
CALL TOLL FREE 800-362-2764
OHIO UTILITIES PROTECTION SERVICE.

INDEXED ON MAP
2014 9P

LESLIE H. GEESLIN

REGISTERED SURVEYOR 5248

P. O. BOX 274

RUSHSVLVANIA, OHIO 43347

TELEPHONE: (937) 468-2793

HURLEY SURVEY

May 29, 1998

The following described real estate situated in the State of Ohio, County of Logan, Township of McArthur, being part of Virginia Military Survey 9884 and more particularly described as follows:

Beginning at a 5/8 inch iron bar set in the west line of Dale Hurley's 14.591 acre tract as described in O. R. Vol. 38 Page 132 that is N. 6° 04' 52" W. 398.82 from a harrow tooth found in the centerline of County Highway 57 at said Hurley's southwest corner.

Thence S. 85° 06' 08" W. 383.76 feet to a 5/8 inch iron bar found at a corner of Larry J. Hurley, Jr.'s 6.085 acre tract as described in O. R. Vol. 353 Page 313.

Thence with the lines of said 6.085 acre tract the following three courses:

- 1. N. 5° 58' 26" W. 423.79 feet to a 5/8 inch iron bar found.
- 2. S. 88° 19' 41" W. 127.10 feet to a 5/8 inch iron bar found.
- 3. S. 58° 58' 37" W. 337.98 feet to a 5/8 inch iron bar found.

Thence N. 21° 41' 50" W. 407.74 feet to a 5/8 inch iron bar found at the southeast corner of Janet Markley's 2.52 acre tract as described in O. R. Vol. 326 Page 2.

Thence with the east line of said 2.52 acre tract N. 5° 41' 25" W. 248.33 feet to a 5/8 inch iron bar found in the south line of Dale E. Hurley, etal's 68.486 acre tract as described in O. R. Vol. 293 Page 462.

Thence with the south line of said Hurley's 68.486 acre tract N. 87° 57' 48" E. 371.51 feet to a 5/8 inch iron bar found.

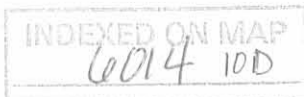
Thence with said Hurley's south line S. 86° 37' 41" E. 561.39 feet to a 5/8 inch iron bar found at the northwest corner of said Dale Hurley's 14.591 acre tract.

Thence with the west line of said 14.591 acre tract S. 6° 04' 52" E. 789.77 feet to the place of beginning.

Containing 13.114 acres more or less.

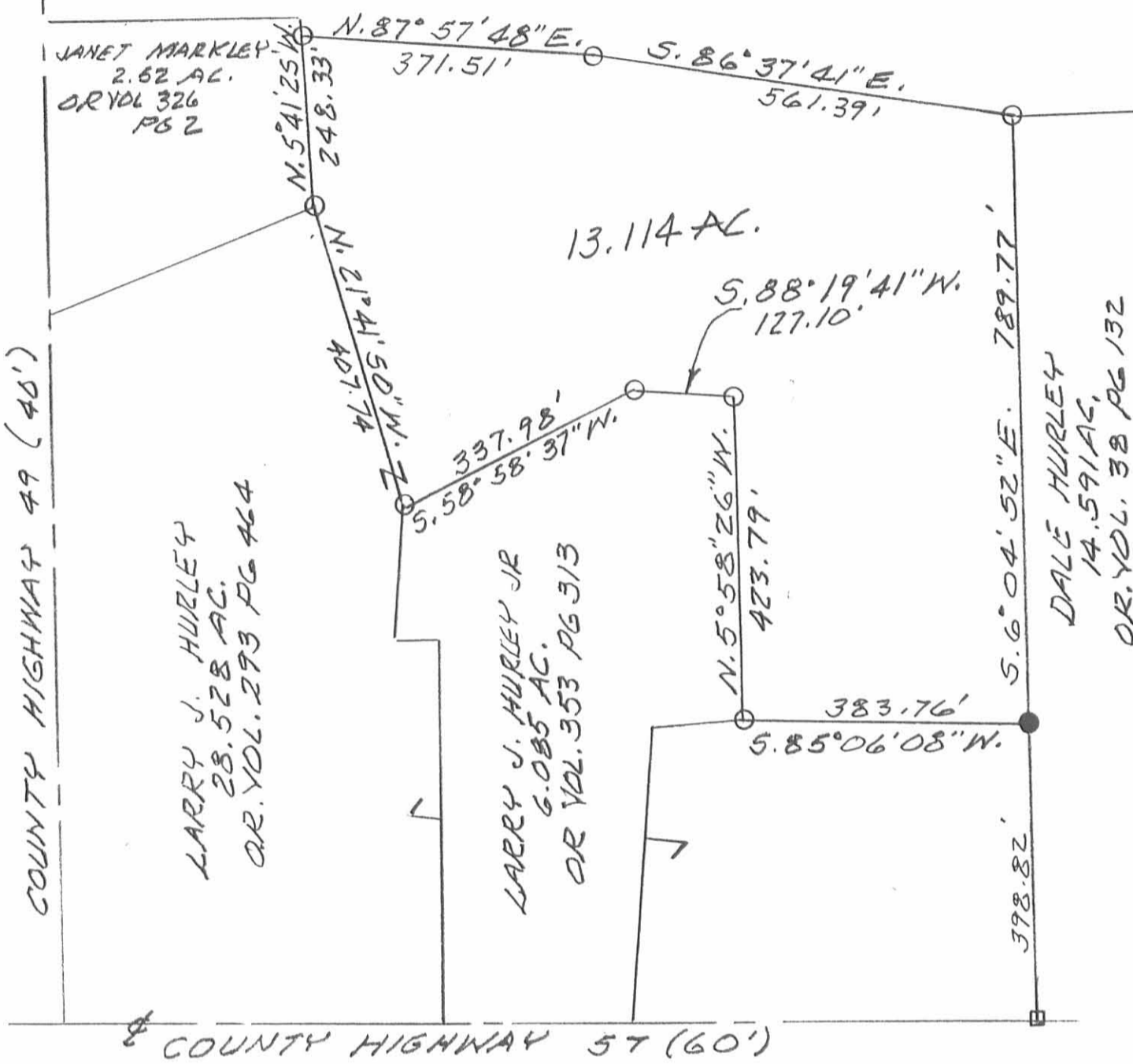
The above described 13.114 acre tract being part of Larry J. Hurley's 28.528 acre tract as described in O. R. Vol. 293 Page 464.

Bearings are based on an assumed bearing (N. 6° 04' 52" W.) for the west line of Dale Hurley's 14.591 acre tract as described in O. R. Vol. 38 Page 132 in this field survey by Leslie H. Geeslin, Reg. Surveyor # 5248 on May 29, 1998.



Leslie H. Geeslin

DALE E. HURLEY ETAL
 68.486 AC.
 O.R. VOL. 293 PAGE 462

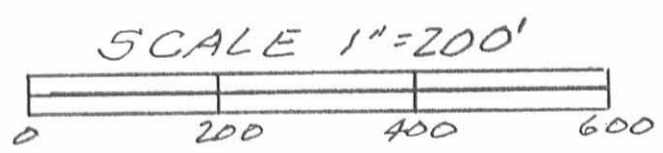


LARRY J. HURLEY
 28.528 AC.
 O.R. VOL. 293 PG 464

LARRY J. HURLEY JR
 6.085 AC.
 O.R. VOL. 353 PG 313

DALE HURLEY
 14.591 AC.
 O.R. VOL. 38 PG 132

JANET MARKLEY
 2.62 AC.
 O.R. VOL 326
 PG 2



- LEGEND:
- = 5/8" IRON IRON BAR SET
 - = 5/8" IRON BAR FOUND
 - = HARROW TPOTH FOUND

SURVEY OF 13.114 ACRES IN VIRGINIA MILITARY SURVEY 9884, McARTHUR TOWNSHIP, LOGAN COUNTY, OHIO FOR LARRY HURLEY, JR ON MAY 29, 1998.



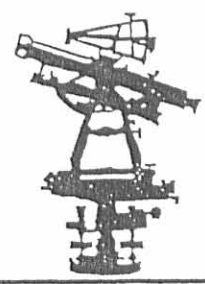
Leslie H. Geeslin
 LESLIE H. GEESLIN
 RUSHSVLVANIA, OH
 PH 937-468-2793

INDEXED ON MAP
 0014 IDP

REC'D 8-8-01 SMY OK



EDWARDS SURVEYING
110 SOUTH MAIN STREET
URBANA, OHIO 43078
(937) 653-6508



LEGAL DESCRIPTION FOR HURLEY'S 5.001 ACRE TRACT

Being situate in the State of Ohio, County of Logan, Township of McArthur, and being a part of Virginia Military Survey 9884, and being more particularly described as follows;

Beginning at a 3/4" diameter iron pipe found 0.45' below grade at the intersection of the centerlines of County Road 57 (60' right-of-way) and County Road 49 (40' right-of-way), also being at the Southwest corner of a 28.528 acre tract conveyed to Larry J. Hurley by Deed recorded in Official Record 293, page 464 of the Logan County Records of which the herein described parcel is a part of;

thence with the centerline of County Road 49, N-5°56'37"-W, 434.86'(feet) to a Mag Nail set at grade;

thence N-85°06'06"-E, 502.11'(feet) to an iron bar set on a West line of a 6.085 acre tract conveyed to John Follrod by Deed recorded in Official Record 465, page 851 of the Logan County Records, passing for reference an iron bar set on the right-of-way line of County Road 49 at 20.00'(feet);

thence with the West line of said Follrod's tract, S-5°39'33"-E, 434.83'(feet) to a P.K. Nail found 0.2' below grade on the centerline of aforementioned County Road 57, also being at the Southwest corner of said Follrod's 6.085 acre tract, passing for reference a 5/8" diameter iron bar with "Geeslin" cap found 0.1' below grade of the right-of-way line of said County Road 57 at 404.83'(feet);

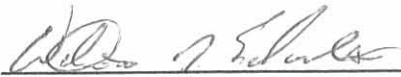
thence with the centerline of County Road 57, S-85°06'06"-W, 499.95'(feet) to the place of beginning.

Containing 5.001 acres, 0.530 acre of which is within the roads rights-of-ways, but being subject to the rights of all legal highways and all easements of record.

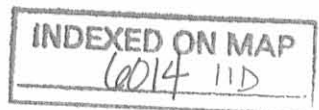
Being a part of a 28.528 acre tract conveyed to Larry J. Hurley by Deed recorded in Official Record 293, page 464 of the Logan County Records.

The foregoing description prepared by and in accordance with a Survey by William D. Edwards, Professional Surveyor No. 7574, August 1, 2001. All iron bars set are 5/8"x30" iron re-bar with a yellow plastic cap stamped "EDWARDS PS 4792 PS 7574" and are set at grade. The basis of bearings for the herein described tract is the centerline of County Road 49 per Official Record 293, page 464 of the Logan County Records. (N-5°56'37"-W)





William D. Edwards
Professional Surveyor No. 7574



RED 8-2-01 SMY OK

PLAT OF SURVEY
McARTHUR TOWNSHIP
LOGAN COUNTY, OHIO
VIRGINIA MILITARY SURVEY 9884

SCALE: 1" = 100'
-50 0 50 100 150



- LEGEND**
- △ = RAILROAD SPIKE.....FOUND
 - = P.K. NAIL.....FOUND
 - = MAG NAIL.....SET at grade
 - = IRON PIPE.....FOUND
 - = IRON BAR.....FOUND
 - = 5/8"x30" IRON RE-BAR WITH YELLOW PLASTIC CAP STAMPED "EDWARDS PS 4792 PS 7574".....SET AT GRADE



- NOTE:**
- BEARINGS ARE BASED ON THE CENTERLINE OF COUNTY ROAD 49 PER O.R. 293, P. 464 OF THE LOGAN COUNTY RECORDS. (N-5°56'37"-W)
 - REFERENCES USED; DEED OF SUBJECT PREMISES, DEEDS OF ADJOINING PARCELS, COUNTY TAX MAP, PLATS OF SURVEYS IN THE VICINITY.

INDEXED ON MAP
6014 11P

SURVEYED BY: *William D. Edwards*
WILLIAM D. EDWARDS
PROFESSIONAL SURVEYOR No. 7574
110 SOUTH MAIN STREET
URBANA, OHIO 43078
(937)653-6508

DATE: AUGUST 1, 2001

REC'D 3-20-02 SML OK
Lee Surveying and Mapping Co., Inc.

Land Surveys • Topography • Subdivisions • Construction Layout

117 N. Madriver St.
Bellefontaine OH 43311



Phone: (937) 593-7335
Fax: (937) 593-7444

**HURLEY
4.420 ACRES**

Lying in Virginia Military Survey 9884, McArthur Township, Logan County, Ohio.

Being out of the Larry J. Hurley 28.528 acre tract as deeded and described in Official Record 293, Page 464 of the Logan County Records of Deeds and being more particularly described as follows:

Beginning at a 3/4 inch iron rod found on the west line of Virginia Military Survey 9884 at the intersection of the center-lines of County Highway 57 and County Highway 49.

THENCE, with the west line of Virginia Military Survey 9884 and the center-line of County Highway 49 (40 feet wide), N 6°-00'-00" E, a distance of 434.81 feet to a MAG nail found at the TRUE POINT OF BEGINNING.

THENCE, with the west line of Virginia Military Survey 9884 and the center-line of County Highway 49, N 6°-00'-00" E, a distance of 345.85 feet to a railroad spike found.

THENCE, with the lines of the William R. Markley 7.580 acre tract (O.R. 461, Pg. 965), the following two (2) courses:

N 74°-29'-26" E, a distance of 412.97 feet to a 5/8 inch iron rod found, passing a 5/8 inch iron rod found at 21.50 feet.

S 9°-47'-21" E, a distance of 267.72 feet to a 5/8 inch iron rod found.

THENCE, with the lines of the John Follrod 6.085 acre tract (O.R. 465, Pg. 851), the following three (3) courses:

S 11°-11'-06" W, a distance of 177.83 feet to a 5/8 inch iron rod found.

S 85°-53'-14" E, a distance of 61.32 feet to a 5/8 inch iron rod found.

S 6°-14'-39" W, a distance of 73.63 feet to a 5/8 inch iron rod found.

THENCE, with the north line of the Mike Bell 5.001 acre tract (O.R. 516, Pg. 495), N 82°-57'-57" W, a distance of 502.10 feet to the point of beginning, passing a 5/8 inch iron rod found at 482.10 feet.

Containing 4.420 acres of which 0.167 acre is within the highway right-of-way.

The basis for bearings is the west line of Virginia Military Survey 9884, being N 6°-00'-00" E, and all other bearings are from angles and distances measured in a field survey by Lee Surveying and Mapping Co., Inc. on March 12, 2002.

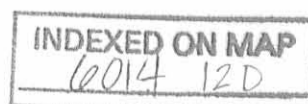


ORIGINAL STAMP IN GREEN

Description prepared by:

A handwritten signature in black ink, appearing to read 'J. Lee'.

Jeffrey I. Lee
Professional Surveyor 6359
March 12, 2002



L-2981

REC'D 3-20-02 SMY OK

JANET E. MARKLEY
2.52 ACRES
O.R. 326, PG. 002
TRACT 1

2 WORKING DAYS
BEFORE YOU DIG
CALL TOLL FREE **800-362-2764**
OHIO UTILITIES PROTECTION SERVICE.

WILLIAM R. MARKEY AND
CAMILA MARKLEY
7.580 ACRES
O.R. 461, PG. 965

LARRY J. HURLEY
28.528 ACRES
O.R. 293, PG. 464

4.420 ACRES
OF WHICH 0.167 ACRE IS WITHIN
THE HIGHWAY RIGHT-OF-WAY

JOHN FOLLROD AND
ALICE F. FOLLROD
6.085 ACRES
O.R. 465, PG. 851

MIKE BELL AND
KAREN BELL
5.001 ACRES
O.R. 516, PG. 495

COUNTY HIGHWAY 49 (40')

(BASIS FOR BEARINGS)
N 06°00'00"E
434.81

COUNTY HIGHWAY 57 (60')

V.M.S. 9883
V.M.S. 9884

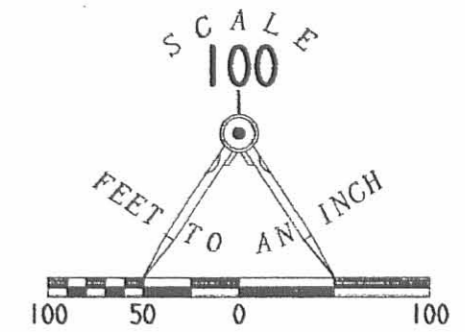
21.50'
N 74°29'26"E
412.97'

267.72'
S 09°47'21"E

177.83'
S 11°11'06"W

61.32'
S 85°53'14"E

73.63'
S 06°14'39"W



LEGEND

- 5/8 INCH IRON ROD SET
- 5/8 INCH IRON ROD FOUND
- 3/4 INCH IRON ROD FOUND
- ⊙ MAG NAIL SET
- ⊗ RAILROAD SPIKE FOUND
- ∅ MAG NAIL FOUND

**SURVEY OF 4.420 ACRES OUT OF THE
LARRY J. HURLEY
28.528 ACRE TRACT
OFFICIAL RECORD 293, PAGE 464
VIRGINIA MILITARY SURVEY 9884
MCARTHUR TOWNSHIP
LOGAN COUNTY, OHIO**



ORIGINAL STAMP IN GREEN

SURVEYED BY:

Jeffrey I. Lee
JEFFREY I. LEE
PROFESSIONAL SURVEYOR 6359

MARCH 12, 2002

COPYRIGHT 2002 BY:

LEE SURVEYING & MAPPING CO., INC.

117 North Madriver Street
BELLEFONTAINE, OHIO 43311

(937) 593-7335

D 381 L2981 (REF:MACKLEY.DAT)

L-2981-3

INDEXED ON MAP

0014 12P

KROCK SURVEY
V.M.S. 9984
McARTHUR TOWNSHIP
March 26, 1977

The following described real estate situated in McArthur Township, Logan County, Ohio and being part of Virginia Military Survey 9884 and more particularly described as follows:

Commencing at an iron bar at the intersection of the centerline of County Highway No.57 and the centerline of County Highway No.49 as shown in Logan County Engineers field book No. 703, page 6; thence with the centerline of said C. H. No.49, N.6° 00'W. 930.5 feet to a railroad spike, said spike being the beginning point of this description; thence continuing with said centerline N.6° 00'W. 385.2 feet to a railroad spike; thence N.84° 00'E. 346.0 feet to an iron bar; thence S.6° 00'E. 248.9 feet to an iron bar; thence S.62° 30'W. 371.9 feet to the place of beginning.

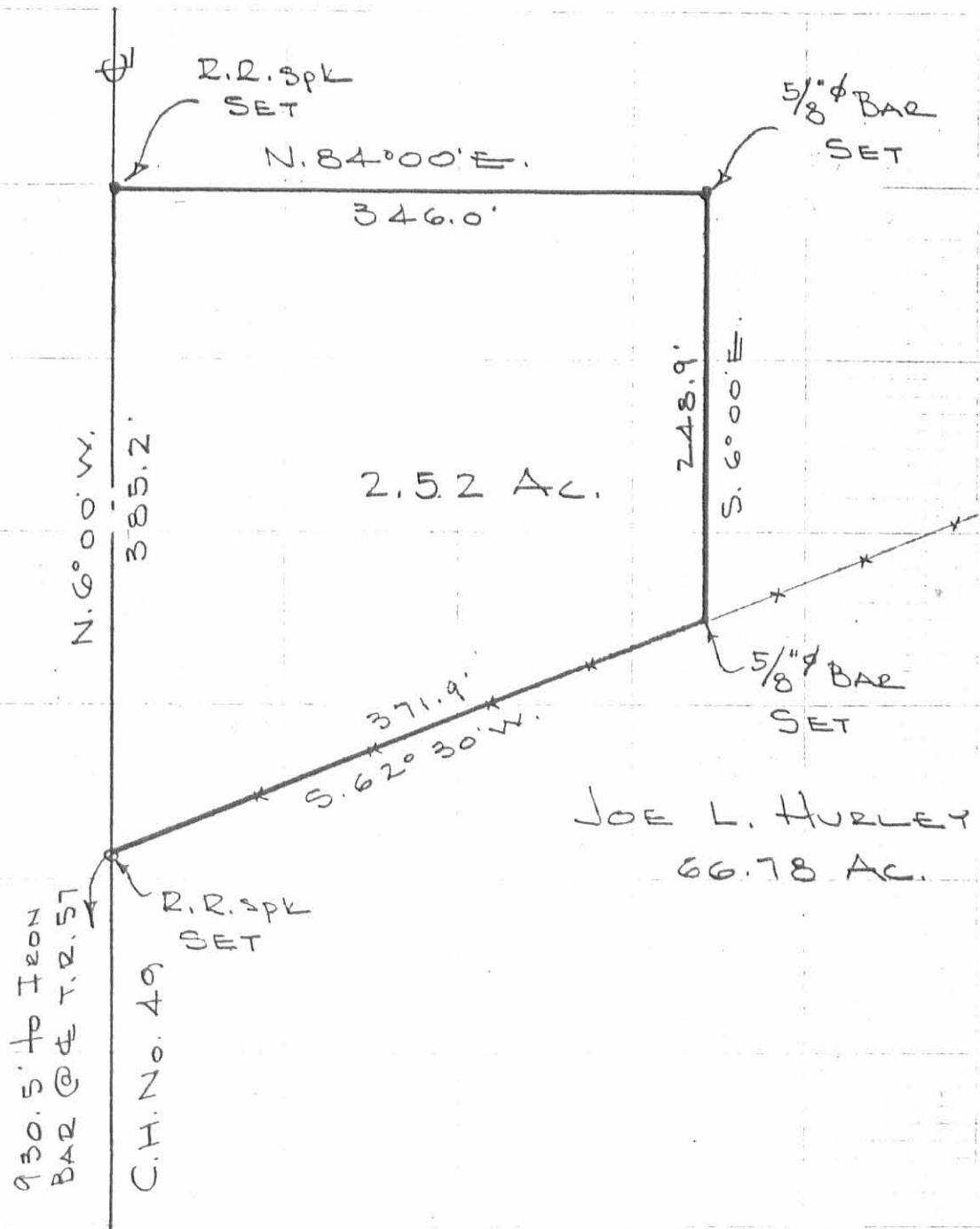
Containing 2.52 acres more or less.

The above described tract being part of Joe L. Hurley's 69.00 acre tract.

13D

6014

INDEXED ON MAP



JOE L. HURLEY
66.78 AC.

KROCK SURVEY
V.M.S. 9884
McARTHUR TOWNSHIP
LOGAN COUNTY, OHIO
MARCH 26, 1977
SCALE 1" = 100'

(6014) 13P

INDEXED ON MAP

DAN L. DODSON
REG. SURVEYOR 4270
BELLEFONTAINE, O
BL 21/38

REF:
F.B. 703, PG. 6-7

Hurley Survey

McArthur Trp

Gary Krock

R.R. B

Dellefontaine

$67^{\circ}01.8$
 $112^{\circ}58.2$
 $83^{\circ}52.9$
 $94^{\circ}07.9$

 $358-120.8$

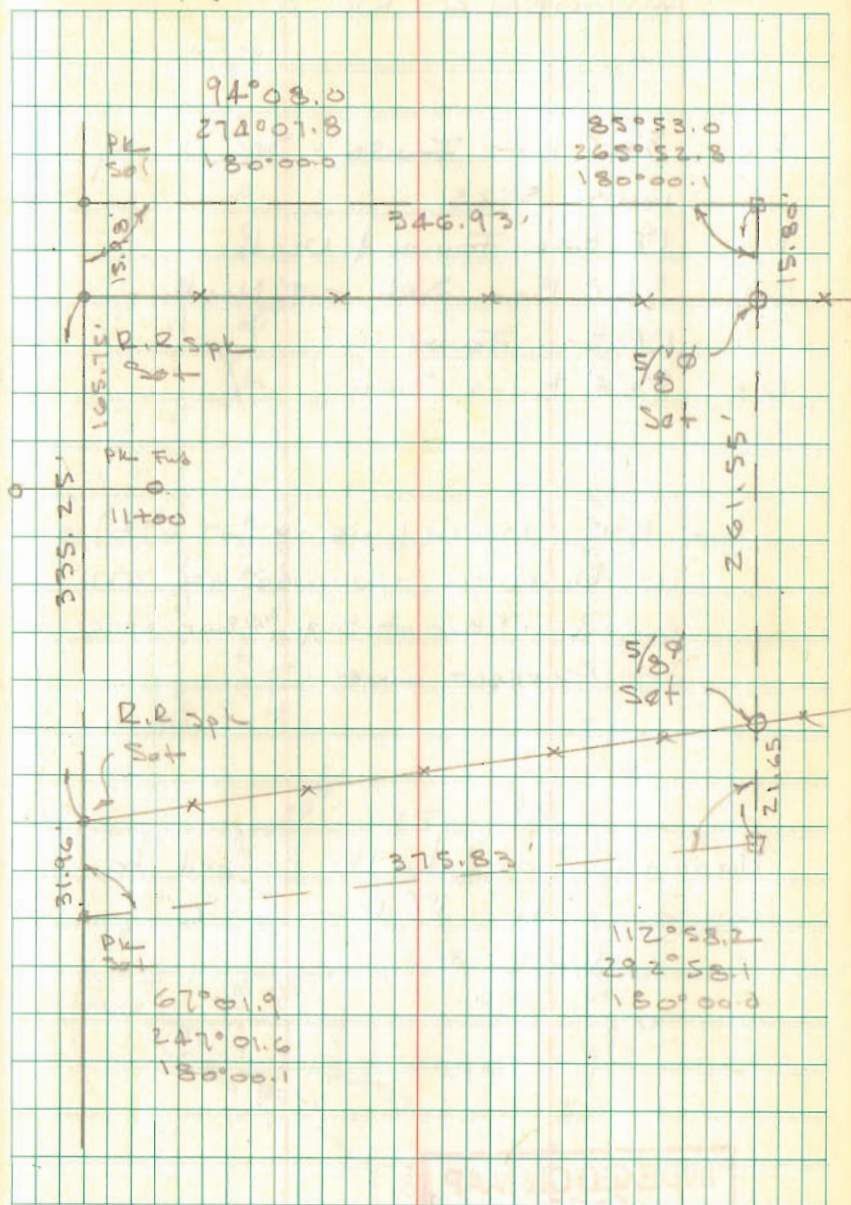
179.60
 $67^{\circ}01.8$

 $112^{\circ}58.2$

INDEXED ON MAP
6014

Dodson
Artis

3/26/77 38





APPROVED



EDWARDS SURVEYING

110 South Main Street
Urbana, Ohio 43078
(937) 653-6508



INGRESS-EGRESS EASEMENT FOR HURLEY'S TRACT "E"

Being situate in the State of Ohio, County of Logan, Township of McArthur, and being a part of Virginia Military Survey 9884, and being an easement, 30.00'(feet) in width, for ingress and egress, the centerline of which is more particularly described as follows;

Beginning for reference at 3/4" diameter iron pipe found at the intersection of the centerlines of County Road 57 (60' right-of-way) and County Road 49 (40' right-of-way);

thence with the centerline of County Road 49, N-6°26'10"-W, 1551.50'(feet) to a point at the **PRINCIPLE PLACE OF BEGINNING** for the easement centerline hereinafter described, passing for reference a Mag Nail found at the Northwest corner of a 5.320 acre tract (Tract "G") conveyed to Joyce L. and Frances Yount by deed recorded in Official Record 1224, Page 515, at 1536.50'(feet);

thence N-82°32'10"-E, 20.00'(feet) to a point on the East right-of-way line of County Road 49 from which a 5/8" diameter iron bar found bears S-6°26'10"-E, 15.00'(feet);

thence with a curve to the left having a Delta of 90°00'00" and a Radius of 100.00'(feet), an Arc distance of 157.08'(feet) to a point from which an iron bar set bears N-83°33'50"-E, 15.00'(feet), the chord of which bears N-38°33'50"-E, 141.42'(feet);

thence N-6°26'10"-W, 36.99'(feet) to a point at the terminus of the easement centerline herein described, also being on the South line of a 10.169 acre tract conveyed to Bonnie S. Hurley by deed recorded in Official Record 1263, Page 873, Tract I, (Tract "E"), from which an iron bar set for reference bears N-82°32'09"-E, 15.00'(feet).

Containing 0.147 acre, 0.014 acre of which is within the Road right-of-way, but being subject to the rights of all legal highways and all easements of record.

Being a part of a 9.393 acre tract conveyed to Bonnie S. Hurley by deed recorded in Official Record 1263, Page 873, Tract II (Tract "F") of the Logan County Records.

The herein described easement prepared by and in accordance with a survey by William D. Edwards, Professional Surveyor No. 7574, November 18, 2017. All iron bars set are 5/8" iron re-bar with a yellow plastic cap stamped "EDWARDS PS 7574". Bearings are based on Ohio State Plane Coordinates, NAD 1983, North Zone, resulting in a bearing for the centerline of County Road 49 of N-6°26'10"-W.



William D. Edwards

William D. Edwards, P.S. 7574

INDEXED ON MAP
2014 14



APPROVED



EDWARDS SURVEYING

110 South Main Street
Urbana, Ohio 43078
(937) 653-6508



INGRESS-EGRESS EASEMENT FOR HURLEY'S TRACT "E" (COMMON DRIVE PORTION)

Being situate in the State of Ohio, County of Logan, Township of McArthur, and being a part of Virginia Military Survey 9884, and being an easement, 30.00'(feet) in width, for ingress and egress, the centerline of which is more particularly described as follows;

Beginning for reference at 3/4" diameter iron pipe found at the intersection of the centerlines of County Road 57 (60' right-of-way) and County Road 49 (40' right-of-way);

thence with the centerline of County Road 49, N-6°26'10"-W, 1551.50'(feet) to a point at the **PRINCIPLE PLACE OF BEGINNING** for the easement centerline, of the shared portion of the driveway, hereinafter described, passing for reference a Mag Nail found at the Northwest corner of a 5.320 acre tract (Tract "G") conveyed to Joyce L. and Frances Yount by deed recorded in Official Record 1224, Page 515, at 1536.50'(feet);

thence N-82°32'10"-E, 20.00'(feet) to a point on the East right-of-way line of County Road 49 from which a 5/8" diameter iron bar found bears S-6°26'10"-E, 15.00'(feet);

thence with a curve to the left having a Delta of 42°58'19" and a Radius of 100.00'(feet), an Arc distance of 75.00'(feet) to a point at the terminus of the shared portion of the driveway easement, the Chord of which bears N-62°04'41"-E, 73.25'(feet).

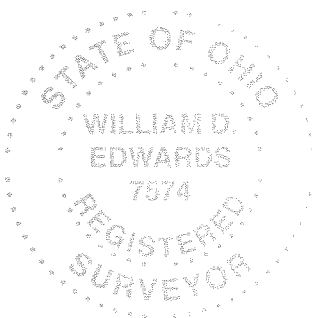
Containing 0.065 acre, 0.014 acre of which is within the Road right-of-way, but being subject to the rights of all legal highways and all easements of record.

Being a part of a 9.393 acre tract conveyed to Bonnie S. Hurley by deed recorded in Official Record 1263, Page 873, Tract II (Tract "F") of the Logan County Records.

The herein described easement prepared by and in accordance with a survey by William D. Edwards, Professional Surveyor No. 7574, November 18, 2017. All iron bars set are 5/8" iron re-bar with a yellow plastic cap stamped "EDWARDS PS 7574". Bearings are based on Ohio State Plane Coordinates, NAD 1983, North Zone, resulting in a bearing for the centerline of County Road 49 of N-6°26'10"-W.



William D. Edwards, P.S. 7574



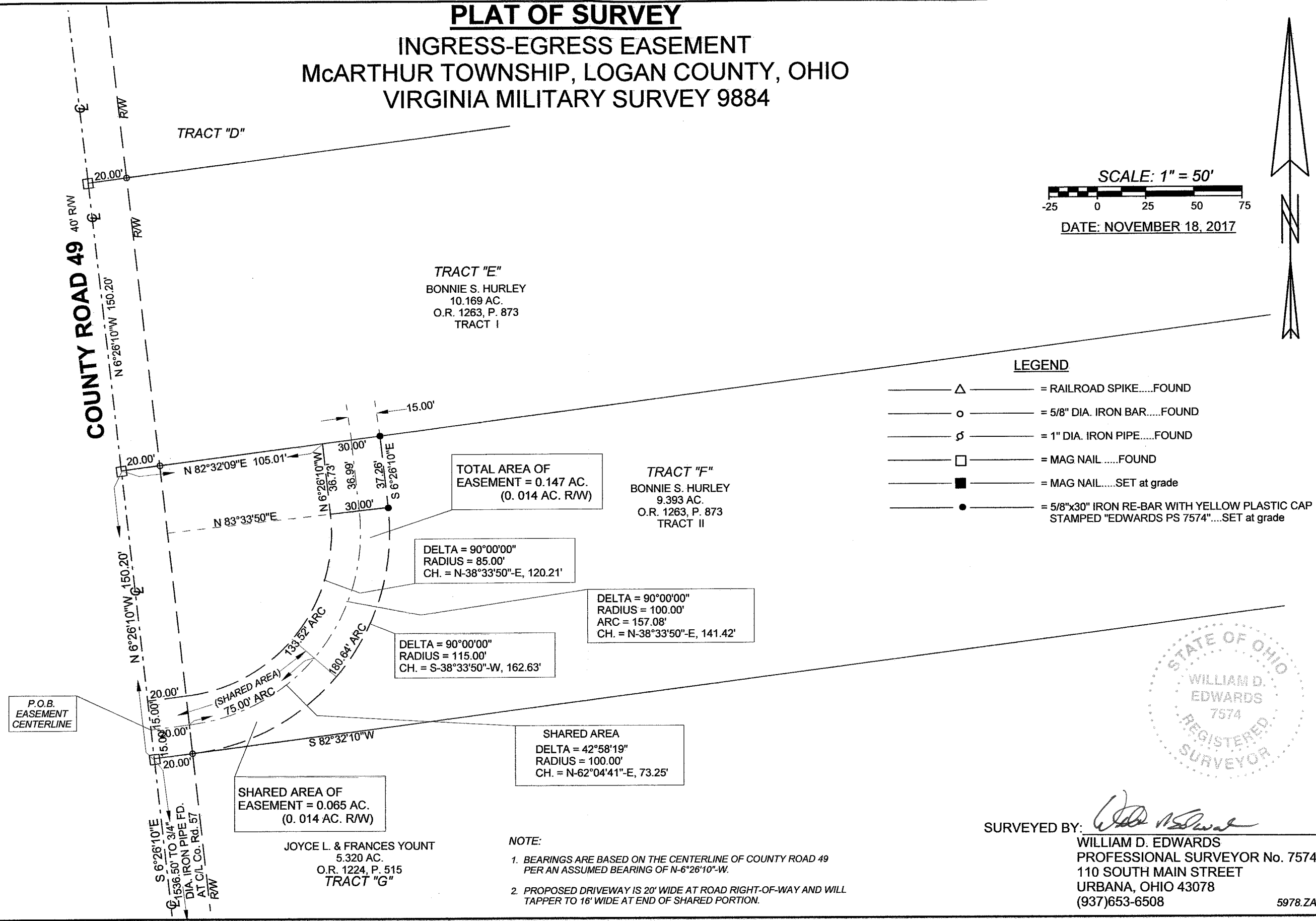
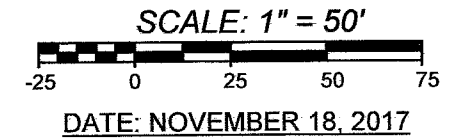
INDEXED ON MAP
0014 14

PLAT OF SURVEY

INGRESS-EGRESS EASEMENT

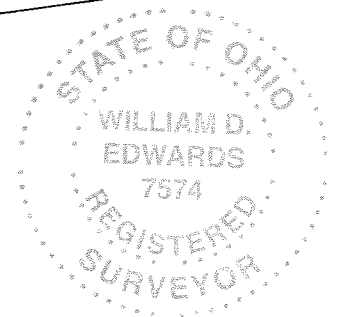
McARTHUR TOWNSHIP, LOGAN COUNTY, OHIO

VIRGINIA MILITARY SURVEY 9884



LEGEND

- △— = RAILROAD SPIKE.....FOUND
- = 5/8" DIA. IRON BAR.....FOUND
- ϕ— = 1" DIA. IRON PIPE.....FOUND
- = MAG NAIL.....FOUND
- = MAG NAIL.....SET at grade
- = 5/8"x30" IRON RE-BAR WITH YELLOW PLASTIC CAP STAMPED "EDWARDS PS 7574".....SET at grade



SURVEYED BY: *William D. Edwards*
WILLIAM D. EDWARDS
 PROFESSIONAL SURVEYOR No. 7574
 110 SOUTH MAIN STREET
 URBANA, OHIO 43078
 (937)653-6508

5978.ZAK

NOTE:

1. BEARINGS ARE BASED ON THE CENTERLINE OF COUNTY ROAD 49 PER AN ASSUMED BEARING OF N-6°26'10"-W.
2. PROPOSED DRIVEWAY IS 20' WIDE AT ROAD RIGHT-OF-WAY AND WILL TAPPER TO 16' WIDE AT END OF SHARED PORTION.

INDEXED ON MAP
0014 14

11-3-22



APPROVED

LEGAL DEED DESCRIPTION
PAUL RICHTER
0.442 ACRE

Real estate situated in McArthur Township of Logan County, Ohio; in the Virginia Military Survey number 9884; being part of the 7.676 acre tract of Paul Richter (Official Record 1131, page 807); and being further bounded and described as follows:

Beginning for reference at a 3/4" iron pipe found at the centerline intersection of County Road 49 (40' R/W) and County Road 57 (60' R/W).

Thence North 06 deg.-25'-32" West, 2387.70 feet along said centerline of County Road 49 and the west line of said V.M.S. 9884 to a mag nail found at the southwest corner of the 3.233 acre tract of Lucas J. and Jaclyn E. Greiner (Official Record 1402, page 727).

Thence North 82 deg.-34'-32" East, 190.20 feet along the south line of said 3.233 acre tract and a north line of said 7.676 acre tract to an iron rod set, being the TRUE POINT OF BEGINNING.

Thence North 82 deg.-34'-32" East, 384.70 feet continuing along said south line of the 3.233 acre tract to an iron rod set.

Thence South 07 deg.-25'-28" East, 50.00 feet to an iron rod set.

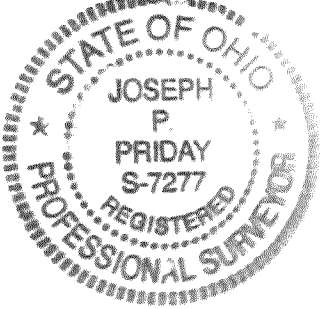
Thence South 82 deg.-34'-32" West, 384.70 feet to an iron rod set.

Thence North 07 deg.-25'-28" West, 50.00 feet to the TRUE POINT OF BEGINNING.

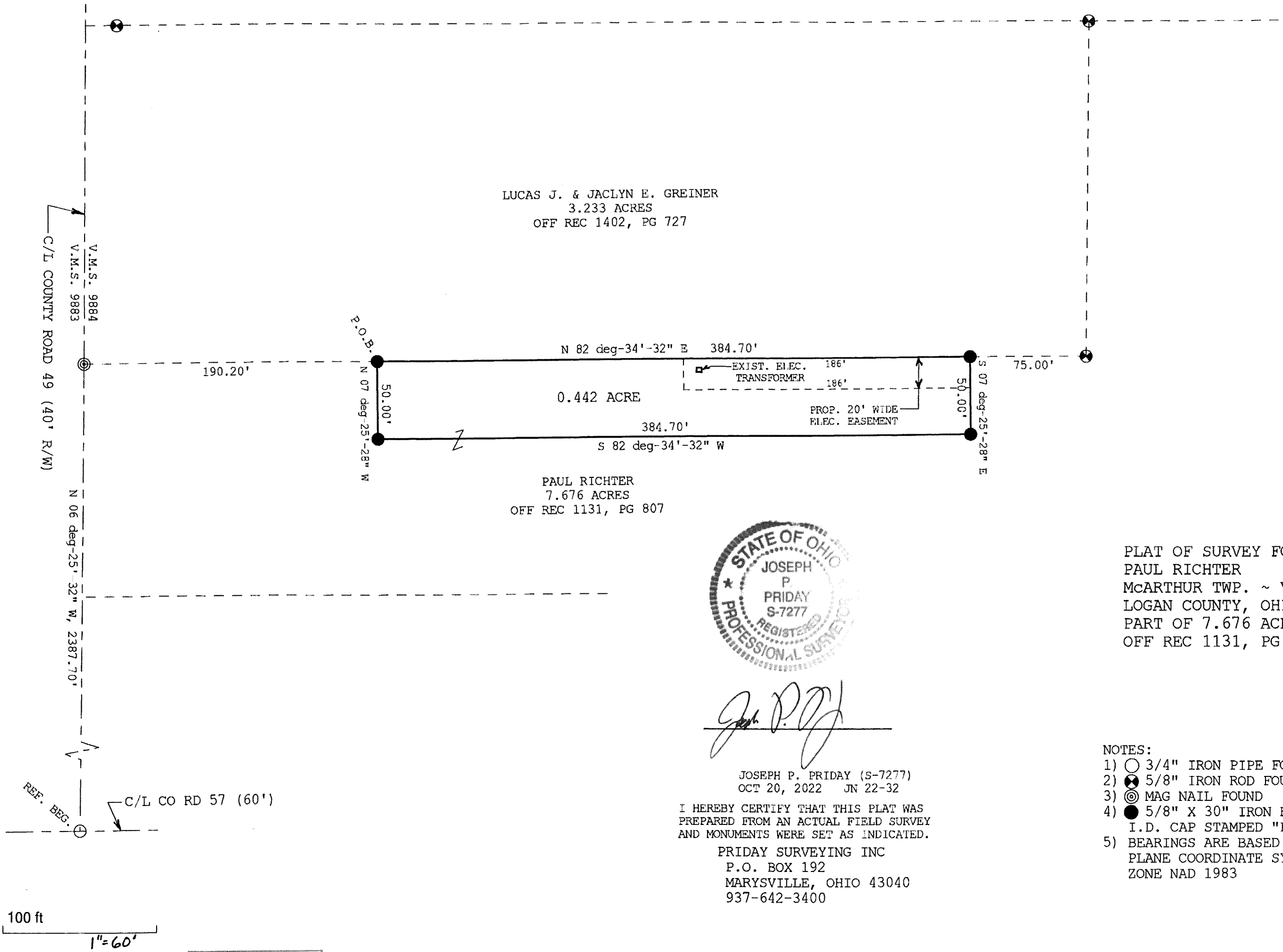
Bearings are based on the State Plane Coordinate System, North zone, Nad 1983. The tract as described from an actual field survey performed on or about October 20, 2022, by Registered Surveyor, Joseph P. Priday (S-7277), contains **0.442 acre**, more or less, subject to all previous easements and rights-of-way of record. All iron rods set are 5/8" x 30" with plastic I.D. caps stamped "Priday". The plat of survey is on file in the Map Room of the Logan County Engineer.

The Grantor hereby reserves a 20 foot wide electric easement as shown on the plat of survey to access an existing electric transformer.

Joseph P. Priday
Priday Surveying, Inc.
P.O. Box 192
Marysville, Ohio 43040

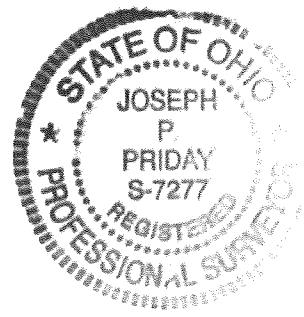


INDEXED ON MAP
6014



LUCAS J. & JACLYN E. GREINER
 3.233 ACRES
 OFF REC 1402, PG 727

PAUL RICHTER
 7.676 ACRES
 OFF REC 1131, PG 807



Joseph P. Priday

JOSEPH P. PRIDAY (S-7277)
 OCT 20, 2022 JN 22-32

I HEREBY CERTIFY THAT THIS PLAT WAS
 PREPARED FROM AN ACTUAL FIELD SURVEY
 AND MONUMENTS WERE SET AS INDICATED.

PRIDAY SURVEYING INC
 P.O. BOX 192
 MARYSVILLE, OHIO 43040
 937-642-3400

PLAT OF SURVEY FOR:
 PAUL RICHTER
 McARTHUR TWP. ~ V.M.S. 9884
 LOGAN COUNTY, OHIO
 PART OF 7.676 ACRE
 OFF REC 1131, PG 807

NOTES:

- 1) ○ 3/4" IRON PIPE FOUND
- 2) ⊗ 5/8" IRON ROD FOUND
- 3) ⊙ MAG NAIL FOUND
- 4) ● 5/8" X 30" IRON ROD SET WITH PLASTIC I.D. CAP STAMPED "PRIDAY"
- 5) BEARINGS ARE BASED ON THE STATE PLANE COORDINATE SYSTEM, NORTH ZONE NAD 1983

100 ft
 1"=60'

INDEXED ON MAP
 6014