



Lee Surveying and Mapping Co.



Farm Surveys • Lot Surveys • Topography • Subdivisions • Construction Layout

143 EAST COLUMBUS AVENUE
BELLEFONTAINE, OHIO 43311

(513) 593-7335

JEFFREY I. LEE, P.S.

RUTHERFORD (6.963 ACRES)

Lying in V.M.S. 9931, McArthur Township, Logan County, Ohio.

Being out of the J. Melville Rutherford original 95.0 acre tract as deeded and described in Volume 195, Page 279 of the Logan County Records of Deeds and being more particularly described as follows:

Beginning at a 5/8 inch iron rod set in the center-line of County Highway 101 at the north corner of the said 95.0 acre tract.

THENCE, with the west line of the Robert Beech 3.15 acre tract (Vol. 406, Pg. 909) and the west line of the Esther Carson 115.0 acre tract (Vol. 332, Pg. 853, Tract II), S 6°-47'-46" E, a distance of 886.55 feet to a 5/8 inch iron rod set.

THENCE, through the said 95.0 acre tract the following seven courses:

S 57°-08'-54" W, a distance of 108.77 feet to a 5/8 inch iron rod set.

N 27°-38'-33" W, a distance of 66.84 feet to a 5/8 inch iron rod set.

N 66°-39'-46" W, a distance of 194.09 feet to a 5/8 inch iron rod set.

N 19°-21'-57" W, a distance of 62.46 feet to a 5/8 inch iron rod set.

N 70°-08'-19" W, a distance of 114.62 feet to a 5/8 inch iron rod set.

N 55°-42'-12" W, a distance of 101.38 feet to a 5/8 inch iron rod set.

N 65°-28'-30" W, a distance of 190.94 feet to a railroad spike found on the center-line of County Highway 101.


THENCE, with the center-line of County Highway 101, N 47°-23'-57" E, a distance of 235.86 feet to a 1 inch iron rod found at Station 52+35.85 as referenced by the Logan County Engineer's Field Book 707, Page 13.

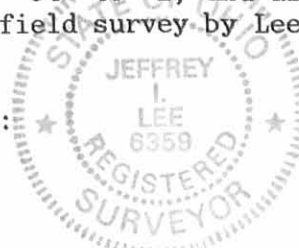
THENCE, continuing with the center-line of County Highway 101, N 44°-54'-40" E, a distance of 577.98 feet to the point of beginning.

Containing 6.963 acres of which 0.539 acre is within the highway right-of-way.

The basis for bearings is based upon the center-line of County Highway 101 along the final course of this description being N 44°-54'-40" E, and all other bearings are from angles and distances measured in a field survey by Lee Surveying and Mapping Company on August 6, 1991.

Description prepared by:


Jeffrey I. Lee
Professional Surveyor 6359
August 16, 1991



INDEXED ON MAP
6026 1D

ORIGINAL STAMP IN GREEN

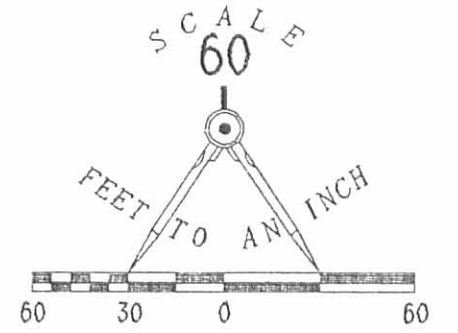
NOTE: COUNTY RECORDS INDICATE THAT THERE IS NO RECORD OF A COMMISSIONERS' JOURNAL ENTRY FOR THIS SECTION OF COUNTY HIGHWAY 101.

REFERENCE: LOGAN COUNTY ENGINEER'S FIELD BOOK 707, PAGES 12 - 14.

ROBERT BEECH
3.15 AC.
VOL. 406, PG. 909

LEGEND

- ⊗ RAILROAD SPIKE FOUND
- 5/8" I. ROD FOUND
- 1" I. ROD FOUND
- 5/8" I. ROD SET



6.963 ACRES
0.539 ACRE IS WITHIN THE
HIGHWAY RIGHT-OF-WAY

ESTHER CARSON
115 AC.
VOL. 332, PG. 853, TR 11

J. MELVILLE RUTHERFORD
ORIGINAL 95 AC.
VOL. 195, PG. 279

SURVEY OF 6.963 ACRES OUT OF THE
J. MELVILLE RUTHERFORD
ORIGINAL 95.0 ACRE TRACT
VOLUME 195, PAGE 279
V.M.S. 9931
McARTHUR TOWNSHIP
LOGAN COUNTY, OHIO

SURVEYED BY:
Jeffrey A. Lee
JEFFREY A. LEE
REGISTERED PROFESSIONAL SURVEYOR 6359
AUGUST 6, 1991
LEE SURVEYING & MAPPING CO.
143 East Columbus Avenue
BELLEFONTAINE, OHIO 43311
(513) 593-7335

INDEXED ON MAP
60261P

Received 4-5-94



Lee Surveying and Mapping Co.



Farm Surveys • Lot Surveys • Topography • Subdivisions • Construction Layout

143 EAST COLUMBUS AVENUE
BELLEFONTAINE, OHIO 43311

(513) 593-7335

JEFFREY I. LEE, P.S.

RUTHERFORD 6.649 ACRES

Lying in Virginia Military Survey 9931, McArthur Township, Logan County, Ohio.

Being out of the J. Melville Rutherford original 95 acre tract as deeded and described in Volume 195, Page 279 of the Logan County Records of Deeds and being more particularly described as follows:

Beginning at a 1 inch iron rod found at the intersection of center-lines of County Road 49 and County Highway 101.

THENCE, with the center-line of County Highway 101 (60 feet wide), N 56°-30'-00" E, a distance of 1825.73 feet to a PK Nail found at the TRUE POINT OF BEGINNING.

THENCE, with the center-line of County Highway 101, N 56°-29'-55" E, a distance of 417.15 feet to a railroad spike found.

THENCE, with the lines of the Raymond D. Frazier 1.00 acre tract (O. R. 103, Pg. 309), the following two courses:

S 33°-30'-39" E, a distance of 163.95 feet to a 5/8 inch iron rod found.

N 56°-26'-31" E, a distance of 232.21 feet to a 5/8 inch iron rod set.

THENCE, through the aforesaid 95 acre tract, S 10°-50'-25" E, a distance of 482.16 feet to a 5/8 inch iron rod set.

THENCE, with the north line of the Esther Carson 125 acre tract (Vol. 332, Pg. 853, Tr. I), S 83°-19'-09" W, a distance of 687.65 feet to a 5/8 inch iron rod set.

THENCE, with the east line of the Robert F. Duff 1.50 acre tract (Vol. 399, Pg. 725), N 6°-48'-18" W, a distance of 334.00 feet to the point of beginning.

Containing 6.649 acres of which 0.293 acre is within the highway right-of-way.

The basis for bearings is based upon the center-line of County Highway 101 being N 56°-30'-00" E, and all other bearings are from angles and distances measured in a field survey by Lee Surveying and Mapping Company on March 30, 1994.

Description prepared by:

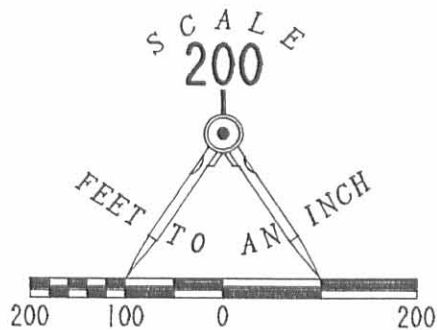
Jeffrey I. Lee
Professional Surveyor 6359
April 4, 1994



L 1928

ORIGINAL STAMP IN GREEN

INDEXED ON MAP
6026 2D

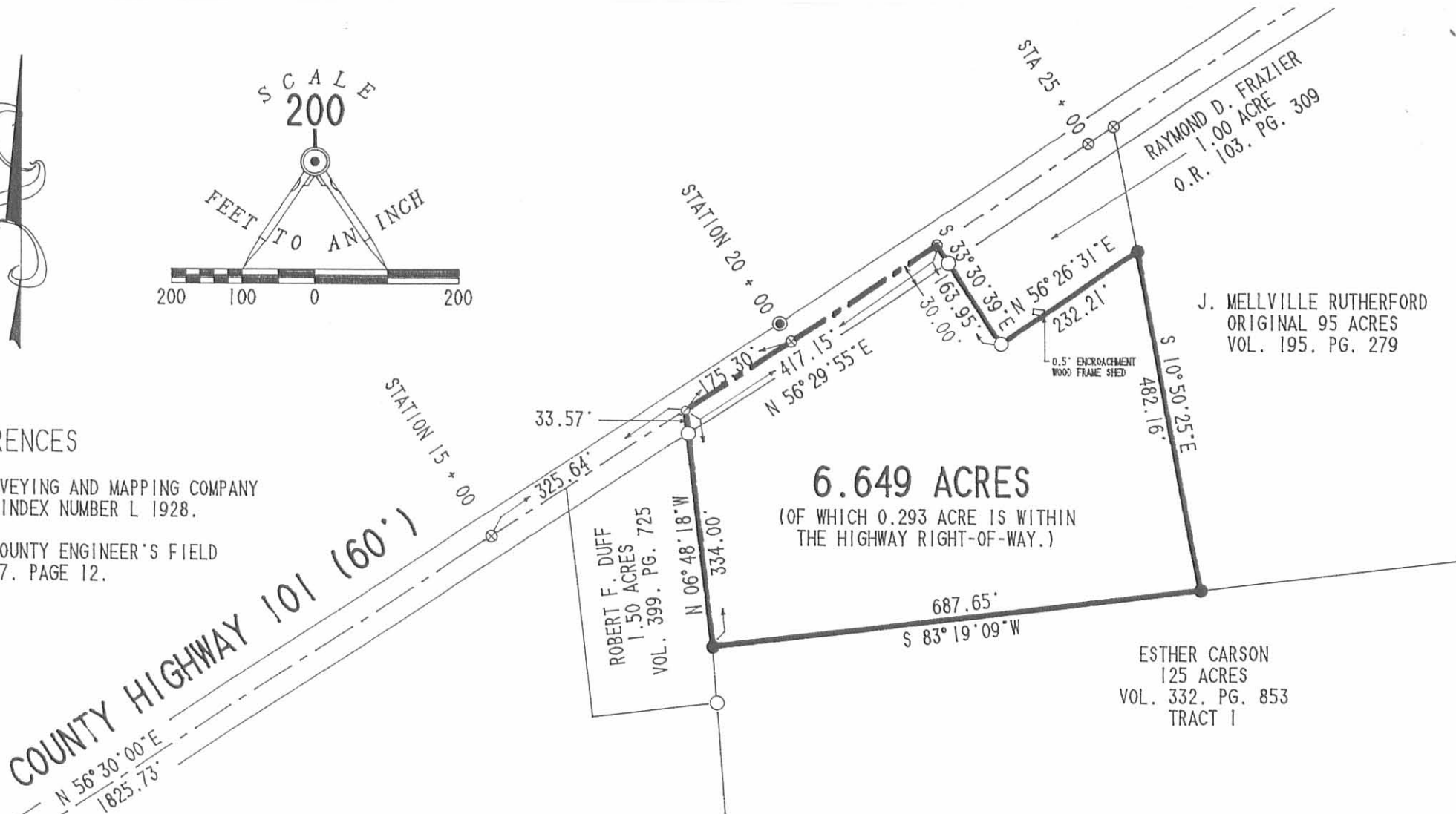


LEGEND

- ⊙ 1" IRON ROD FOUND
- 5/8" IRON ROD FOUND
- ⊗ RAILROAD SPIKE FOUND
- ⊗ PK NAIL FOUND
- 5/8" IRON ROD SET

REFERENCES

LEE SURVEYING AND MAPPING COMPANY
 SURVEY INDEX NUMBER L 1928.
 LOGAN COUNTY ENGINEER'S FIELD
 BOOK 707. PAGE 12.



COUNTY ROAD 49

INDEXED ON MAP
 6026 2P

**SURVEY OF 6.649 ACRES OUT OF THE
 J. MELVILLE RUTHERFORD
 95 ACRES (ORIGINAL DEED)
 VOLUME 195. PAGE 279
 VIRGINIA MILITARY SURVEY 9931
 McARTHUR TOWNSHIP
 LOGAN COUNTY
 OHIO**



ORIGINAL STAMP IN GREEN

SURVEYED BY

 JEFFREY I. LEE
 PROFESSIONAL SURVEYOR 6359
 MARCH 30, 1994

LEE SURVEYING & MAPPING CO.
 143 East Columbus Avenue
 BELLEFONTAINE, OHIO 43311
 (513) 593-7335

D237 JRTHRFRD L 1928-4

REC'D 5-11-06 SMM/ole

Lee Surveying and Mapping Co., Inc.

Land Surveys • Topography • Subdivisions • Construction Layout

117 N. Madriver St.
Bellefontaine OH 43311



Phone: (937) 593-7335
Fax: (937) 593-7444

1975-2005 - 30 YEARS OF EXCELLENCE

**WEAVER
86.254 ACRES**

Lying in Virginia Military Survey 9931, McArthur Township, Logan County, Ohio.

Being all of the Steven Weaver and Brenda Weaver 81.068 acre tract as deeded and described in Official Record 245, Page 888 of the Logan County Records of Deeds and being more particularly described as follows:

Commencing at a 1 inch iron bar found on the intersection of center-lines of County Highway 49 and County Highway 101.

THENCE, with the center-line of County Highway 101 (60 feet wide), N 56°-27'-14"E, a distance of 2542.90 feet to a railroad spike found at the TRUE POINT OF BEGINNING.

THENCE, with the center-line of County Highway 101, the following two courses:

N 56°-27'-14"E, a distance of 716.27 feet to a 1 inch iron bar found.

N 47°-23'-57"E, a distance of 1740.69 feet to a railroad spike found.

THENCE, with the lines of the Charles J. McDonald 6.963 acre tract (O.R. 414, Pg. 900), the following seven courses:

S 65°-28'-30"E, a distance of 190.94 feet to a 5/8 inch iron rod found, passing a 5/8 inch iron rod found at 32.56 feet.

S 55°-42'-12"E, a distance of 101.38 feet to a 5/8 inch iron rod found.

S 70°-08'-19"E, a distance of 114.62 feet to a 5/8 inch iron rod found.

S 19°-21'-57"E, a distance of 62.46 feet to a 5/8 inch iron rod found.

S 66°-39'-46"E, a distance of 194.09 feet to a 5/8 inch iron rod found.

S 27°-38'-33"E, a distance of 66.84 feet to a 5/8 inch iron rod found.

N 57°-08'-54"E, a distance of 108.77 feet to a 5/8 inch iron rod found.

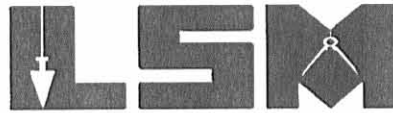
THENCE, with the west lines of the Helen Marie Cavin, etal 46.056 acre tract (O.R. 795, Pg. 1) and the Leon H. Troyer and Ruth Troyer, as trustee, 114.31 acre tract (O.R. 783, Pg. 983), S 6°-47'-45"E, a distance of 1611.20 feet to a point where a 36" tree has fallen over, passing a 5/8 inch iron rod set at 1607.20 feet.

THENCE, with the north line of the Karl E. Harpest 125 acre tract (O.R. 565, Pg. 14), S 83°-16'-25"W, a distance of 2648.69 feet to a 5/8 inch iron rod found.

Lee Surveying and Mapping Co., Inc.

Land Surveys • Topography • Subdivisions • Construction Layout

117 N. Madriver St.
Bellefontaine OH 43311



Phone: (937) 593-7335
Fax: (937) 593-7444

1975-2005 - 30 YEARS OF EXCELLENCE

THENCE, with the east line of the Steven Weaver 4.649 acre tract (O.R. 748, Pg. 845) and the Raymond D. Frazier 1.00 acre tract (O.R. 103, Pg. 309), N 10°-55'-54"W, a distance of 659.37 feet to the point of beginning, passing a 5/8 inch iron rod set at 626.86 feet.

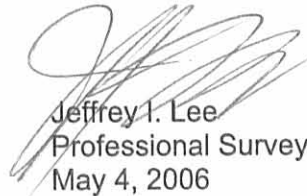
Containing 86.254 acres, of which 1.702 acres are within the highway right-of-way.

The basis for bearings is the center-line of County Highway 101, being N 56°-27'-14"E, and all other bearings are from angles and distances measured in a field survey by Lee Surveying and Mapping Co., Inc. on May 3, 2006.

Description prepared by:



ORIGINAL STAMP IN GREEN


Jeffrey I. Lee
Professional Surveyor 6359
May 4, 2006

1928046

BE'D 5-11-06 SMJ OK

LEGEND:

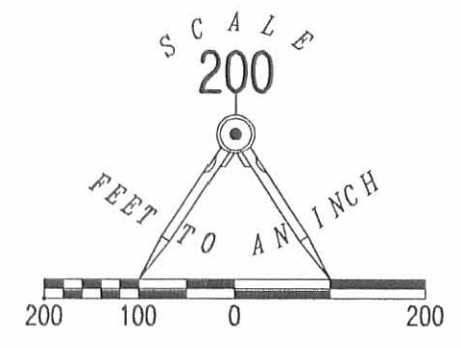
- 1 INCH IRON BAR FOUND
- ⊗ RAILROAD SPIKE FOUND
- 5/8 INCH IRON ROD FOUND
- 5/8 INCH IRON ROD SET

REFERENCE:

LOGAN COUNTY ENGINEER'S
FIELD BOOK 707, PAGE 12

**BEARINGS AND DISTANCES
ALONG PROPERTY LINES**

LINE	BEARING	DISTANCE
L1	S 55°42'12" E	101.38'
L2	S 70°08'19" E	114.62'
L3	S 19°21'57" E	62.46'
L4	S 66°39'46" E	194.09'
L5	S 27°38'33" E	66.84'
L6	N 57°08'54" E	108.77'



CHARLES J. McDONALD
6.963 ACRES
O.R. 414, PG. 900

HELEN MARIE CAVIN, ETAL
46.056 ACRES
O.R. 795, PG. 1

LEON H. TROYER
AND RUTH A. TROYER,
AS TRUSTEE
114.31 ACRES
O.R. 783, PG. 983

86.254 ACRES

OF WHICH 1.702 ACRES ARE WITHIN
THE HIGHWAY RIGHT-OF-WAY

STEVEN WEAVER AND
BRENDA WEAVER
81.068 ACRES
O.R. 245, PG. 888

KARL E. HARPEST
125 ACRES
O.R. 565, PG. 14

STEVEN WEAVER
4.649 ACRES
O.R. 748, PG. 845

RAYMOND D. FRAZIER
1.00 ACRE
O.R. 103, PG. 309

RETRACEMENT SURVEY OF THE
STEVEN WEAVER AND
BRENDA WEAVER
81.068 ACRE TRACT
OFFICIAL RECORD 245, PAGE 888
VIRGINIA MILITARY SURVEY 9931
McARTHUR TOWNSHIP
LOGAN COUNTY, OHIO



SURVEYED BY:
[Signature]
JEFFREY I. LEE
PROFESSIONAL SURVEYOR 6359
MAY 3, 2006

COPYRIGHT 2006 BY:
LEE SURVEYING & MAPPING CO., INC.
117 North Madriver Street
BELLEFONTAINE, OHIO 43311
(937) 593-7335

KSR D0506 1928046 L-1928-2

2 WORKING DAYS
BEFORE YOU DIG
CALL TOLL FREE 800-362-2764
OHIO UTILITIES PROTECTION SERVICE.

INDEXED ON MAP
6026 3P

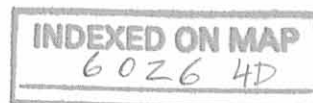
RUTHERFORD SURVEY
V.M.S. 9931
MCARTHUR TOWNSHIP
April 9, 1977

The following described real estate situated in McArthur Township, Logan County, Ohio and being part of Virginia Military Survey 9931 and more particularly described as follows:

Commencing at a stone in the center of County Highway No.101 at the northwest corner of J. M. Rutherford's 95.28 acre tract, said stone being station 18 + 25.64 as shown in Logan County Engineers field book 707, page 12; thence with the centerline of said C. H. 101 N.56° 30'E. 417.1 feet to a railroad spike, said spike being the beginning point of this description; thence continuing with said centerline N.56° 30'E. 300.0 feet to a railroad spike; thence S.11° 00'E. 177.5 feet to an iron bar; thence S.56° 30'W. 232.1 feet to an iron bar; thence N.33° 30'W. 164.0 feet to the place of beginning, passing an iron bar at 134.0 feet.

Containing 1.00 acre more or less.

The above described real estate being part of J. Melville Rutherford's 95.28 acre tract.



J. M. RUTHERFORD
94.28 AC.

R.R. SPL.
SET

STA. 25+42.75

S. 11° 00' E.
177.5'

5/8" φ BAR
SET

60' WIDE

C. I. No. 101

300.0'

N. 56° 30' E.

1.00 AC.

S. 56° 30' W. 232.1'

R.R. SPL.
SET

30' N. 33° 30' W.

164.0'

5/8" φ BAR
SET

ART. 1 TO
STONE @
N.W. COR. RUTHERFORD

RUTHERFORD SURVEY
V.M.S. 9931

MCARTHUR TOWNSHIP
LOGAN COUNTY, OHIO

APRIL 9, 1977

SCALE 1" = 50'

DAN L. DODSON
REG. SURVEYOR 4270
BELLEFONTAINE, OHIO

INDEXED ON MAP
60264P

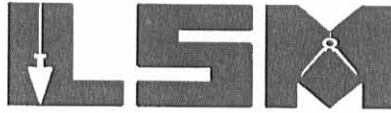
REF:
F.B. 707, PG. 12

REC'D 9-22-04 SML OK

Lee Surveying and Mapping Co., Inc.

Land Surveys • Topography • Subdivisions • Construction Layout

117 N. Madriver St.
Bellefontaine OH 43311



Phone: (937) 593-7335
Fax: (937) 593-7444

RUTHERFORD 2.000 ACRES

Lying in Virginia Military Survey 9931, McArthur Township, Logan County, Ohio.

Being out of the Geneva G. Rutherford, Trustee of the Geneva G. Rutherford Living Trust 6.649 acre tract (1/2 interest) as deeded and described in Official Record 245, Page 481 and the J. Melville Rutherford, Trustee of the J. Melville Rutherford Living Trust 6.649 acre tract (1/2 interest) as deeded and described in Official Record 245, Page 471 of the Logan County Records of Deeds and being more particularly described as follows:

Beginning at a 1" iron bar found on the intersection of center-lines of County Highway 49 and County Highway 101.

THENCE, with the center-line of County Highway 101 (60 feet wide), N 56°-30'-00"E, a distance of 1825.73 feet to a PK nail found at station 18+25.64 (FB. 707, Pg. 12) at the TRUE POINT OF BEGINNING.

THENCE, with the center-line of County Highway 101, N 56°-29'-55"E, a distance of 267.15 feet to a railroad spike set.

THENCE, S 33°-30'-39"E, a distance of 80.00 feet to a 5/8 inch iron rod set, passing a 5/8 inch iron rod set at 30.00 feet.

THENCE, N 56°-29'-55"E, a distance of 40.30 feet to a 5/8 inch iron rod set.

THENCE, S 33°-30'-39"E, a distance of 172.67 feet to a 5/8 inch iron rod set.

THENCE, S 34°-09'-20"W, a distance of 133.01 feet to a 5/8 inch iron rod set.

THENCE, S 83°-19'-09"W, a distance of 301.03 feet to a 5/8 inch iron rod set.

THENCE, with the east line of the Scott D. Vanhose 1.50 acre tract (O.R. 405, Pg. 232), N 6°-48'-18"W, a distance of 187.38 feet to the point of beginning, passing a 5/8 inch iron rod found at 153.81 feet.

Containing 2.000 acres, of which 0.189 acre is within the highway right-of-way.

The basis for bearings is the center-line of County Highway 101 (60 feet wide), being N 56°-30'-00"E, and all other bearings are from angles and distances measured in a field survey by Lee Surveying and Mapping Co., Inc. on August 11, 2004, Revised September 20, 2004.



ORIGINAL STAMP IN GREEN

Description prepared by:

Jeffrey I. Lee
Professional Surveyor 6359
September 20, 2004

L-1928



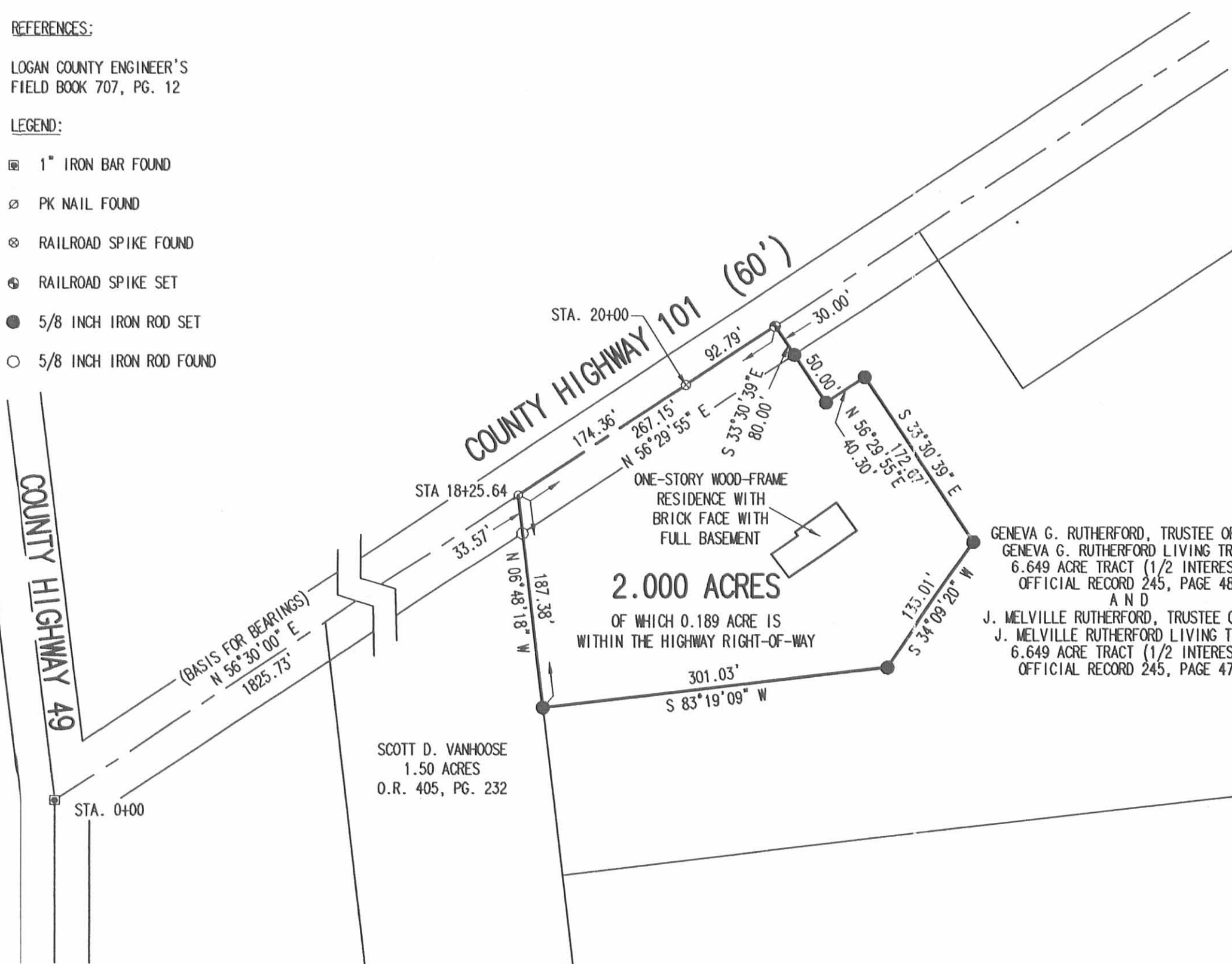
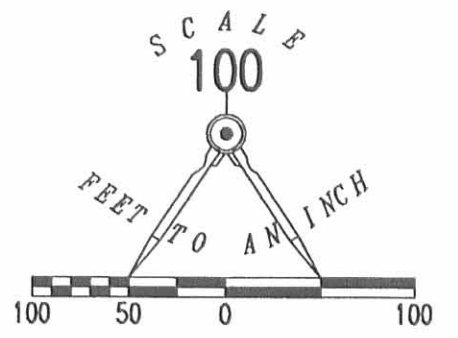
REC'D 9-22-04 S.M.J. OUL

REFERENCES:

LOGAN COUNTY ENGINEER'S
FIELD BOOK 707, PG. 12

LEGEND:

- ⊠ 1" IRON BAR FOUND
- ⊙ PK NAIL FOUND
- ⊗ RAILROAD SPIKE FOUND
- ⊕ RAILROAD SPIKE SET
- 5/8 INCH IRON ROD SET
- 5/8 INCH IRON ROD FOUND



SURVEY OF A 2.000 ACRE TRACT OUT OF THE
 GENEVA G. RUTHERFORD, TRUSTEE OF THE
 GENEVA G. RUTHERFORD LIVING TRUST
 6.649 ACRE TRACT (1/2 INTEREST)
 OFFICIAL RECORD 245, PAGE 481
 AND
 J. MELVILLE RUTHERFORD, TRUSTEE OF THE
 J. MELVILLE RUTHERFORD LIVING TRUST
 6.649 ACRE TRACT (1/2 INTEREST)
 OFFICIAL RECORD 245, PAGE 471
 VIRGINIA MILITARY SURVEY 9931
 McARTHUR TOWNSHIP
 LOGAN COUNTY, OHIO

GENEVA G. RUTHERFORD, TRUSTEE OF THE
 GENEVA G. RUTHERFORD LIVING TRUST
 6.649 ACRE TRACT (1/2 INTEREST)
 OFFICIAL RECORD 245, PAGE 481
 AND
 J. MELVILLE RUTHERFORD, TRUSTEE OF THE
 J. MELVILLE RUTHERFORD LIVING TRUST
 6.649 ACRE TRACT (1/2 INTEREST)
 OFFICIAL RECORD 245, PAGE 471

SCOTT D. VANHOOSE
 1.50 ACRES
 O.R. 405, PG. 232

SURVEYED BY:

Jeffrey I. Lee
 JEFFREY I. LEE
 PROFESSIONAL SURVEYOR 6359
 AUGUST 11, 2004
 REVISED SEPTEMBER 20, 2004



ORIGINAL STAMP IN GREEN

COPYRIGHT 2004 BY:
 LEE SURVEYING & MAPPING CO., INC.
 117 North Madriver Street
 BELLEFONTAINE, OHIO 43311
 (937) 593-7335

KSR D413 1928094 L-1928-3

2 WORKING DAYS
BEFORE YOU DIG
 CALL TOLL FREE 800-362-2764
 OHIO UTILITIES PROTECTION SERVICE

INDEXED ON MAP
 6026 5P