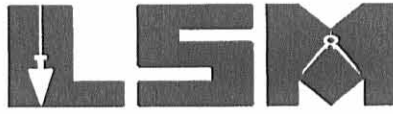


REV'D 3-29-06 SWM OK

Lee Surveying and Mapping Co., Inc.

Land Surveys • Topography • Subdivisions • Construction Layout

117 N. Madriver St.
Bellefontaine OH 43311



Phone: (937) 593-7335
Fax: (937) 593-7444

1975-2005 - 30 YEARS OF EXCELLENCE

**SWONGUER
0.276 ACRE**

Lying in Virginia Military Survey 9904, McArthur Township, Logan County, Ohio.

Being out of the Roland Marion Swonguer original 24.5 acre tract as deeded and described in Volume 352, Page 148, Tract II of the Logan County Records of Deeds and being more particularly described as follows:

Beginning at a 1 inch iron bar found in a monument box on the south line of Virginia Military Survey 9904 at the intersection of center-lines of County Highway 37 and County Highway 39.

THENCE, with the center-line of County Highway 39 (50 feet wide), N 21°-00'-00"E, a distance of 1357.21 feet to a MAG nail set at the TRUE POINT OF BEGINNING.

THENCE, S 83°-04'-19"W, a distance of 256.88 feet to a 5/8 inch iron rod set, passing a 5/8 inch iron rod set at 28.29 feet.

THENCE, N 21°-05'-42"E, a distance of 52.98 feet to a 5/8 inch iron rod set.

THENCE, with the south line of the R. Ronald Kratzenberg 1.00 acre tract (Vol. 402, Pg. 984, Tract II), N 83°-04'-19"E, a distance of 256.78 feet to a MAG nail set on the center-line of County Highway 39, passing a 5/8 inch iron rod set at 228.49 feet.

THENCE, with the center-line of County Highway 39, S 21°-00'-00"W, a distance of 52.94 feet to the point of beginning.

Containing 0.276 acre, of which 0.030 acre is within the highway right-of-way.

The basis for bearings is the center-line of County Highway 39, being N 21°-00'-00"E, and all other bearings are from angles and distances measured in a field survey by Lee Surveying and Mapping Co., Inc. on March 23, 2006.



Description prepared by:

Jeffrey I. Lee
Jeffrey I. Lee
Professional Surveyor 6359
March 27, 2006

426036

ORIGINAL STAMP IN GREEN



REC'D 3-29-06 SML/ALC

Lee Surveying and Mapping Co., Inc.

Land Surveys • Topography • Subdivisions • Construction Layout

117 N. Madriver St.
Bellefontaine OH 43311



Phone: (937) 593-7335
Fax: (937) 593-7444

1975-2005 - 30 YEARS OF EXCELLENCE

**SWONGUER
1.050 ACRES**

Lying in Virginia Military Survey 9904, McArthur Township, Logan County, Ohio.

Being out of the Roland Marion Swonguer original 24.5 acre tract as deeded and described in Volume 352, Page 148, Tract II of the Logan County Records of Deeds and being more particularly described as follows:

Beginning at a 1 inch iron bar found in a monument box on the south line of Virginia Military Survey 9904 at the intersection of center-lines of County Highway 37 and County Highway 39.

THENCE, with the center-line of County Highway 39 (50 feet wide), N 21°-00'-00"E, a distance of 1266.66 feet to a MAG nail set at the TRUE POINT OF BEGINNING.

THENCE, S 83°-04'-19"W, a distance of 257.05 feet to a 5/8 inch iron rod set, passing a 5/8 inch iron rod set at 28.29 feet.

THENCE, S 78°-47'-50"W, a distance of 157.97 feet to a 5/8 inch iron rod set.

THENCE, N 6°-55'-41"W, a distance of 138.54 feet to a 5/8 inch iron rod set.

THENCE, with the south lines of the R. Ronald Kratzenberg 0.81 acre and 1.00 acre tract (Vol. 402, Pg. 984, Tracts I and II), N 83°-04'-19"E, a distance of 225.00 feet to a 5/8 inch iron rod set.

THENCE, S 21°-05'-42"W, a distance of 52.98 feet to a 5/8 inch iron rod set.

THENCE, N 83°-04'-19"E, a distance of 256.88 feet to a MAG nail set on the center-line of County Highway 39, passing a 5/8 inch iron rod set at 228.59 feet.

THENCE, with the center-line of County Highway 39, S 21°-00'-00"W, a distance of 90.55 feet to the point of beginning.

Containing 1.050 acres, of which 0.052 acre is within the highway right-of-way.

The basis for bearings is the center-line of County Highway 39, being N 21°-00'-00"E, and all other bearings are from angles and distances measured in a field survey by Lee Surveying and Mapping Co., Inc. on March 23, 2006.



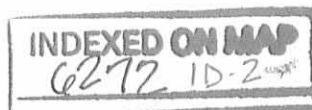
ORIGINAL STAMP IN GREEN

Description prepared by:

A handwritten signature in black ink, appearing to read 'Jeffrey I. Lee'.

Jeffrey I. Lee
Professional Surveyor 6359
March 27, 2006

426036

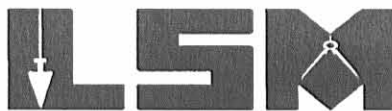


REC'D 3-29-06 SWM RL

Lee Surveying and Mapping Co., Inc.

Land Surveys • Topography • Subdivisions • Construction Layout

117 N. Madriver St.
Bellefontaine OH 43311



Phone: (937) 593-7335
Fax: (937) 593-7444

1975-2005 - 30 YEARS OF EXCELLENCE

**SWONGUER
4.143 ACRES**

Lying in Virginia Military Survey 9904, McArthur Township, Logan County, Ohio.

Being out of the Roland Marion Swonguer original 24.5 acre tract as deeded and described in Volume 352, Page 148, Tract II of the Logan County Records of Deeds and being more particularly described as follows:

Beginning at a 1 inch iron bar found in a monument box on the south line of Virginia Military Survey 9904 at the intersection of center-lines of County Highway 37 and County Highway 39.

THENCE, with the center-line of County Highway 39 (50 feet wide), N 21°-00'-00"E, a distance of 1095.70 feet to a MAG nail set at the TRUE POINT OF BEGINNING.

THENCE, S 82°-19'-39"W, a distance of 259.19 feet to a 5/8 inch iron rod set, passing a 5/8 inch iron rod set at 28.49 feet.

THENCE, S 21°-05'-45"W, a distance of 148.94 feet to a 5/8 inch iron rod set.

THENCE, with the north line of the Roland M. Swonguer 24.215 acre tract (Vol. 377, Pg. 645), S 82°-33'-35"W, a distance of 464.07 feet to a 5/8 inch iron rod set.

THENCE, N 6°-53'-08"W, a distance of 244.00 feet to a 5/8 inch iron rod set.

THENCE, N 78°-47'-50"E, a distance of 617.76 feet to a 5/8 inch iron rod set, passing a 5/8 inch iron rod set at 459.79 feet.

THENCE, N 83°-04'-19"E, a distance of 257.05 feet to a MAG nail set on the center-line of County Highway 39, passing a 5/8 inch iron rod set at 228.76 feet.

THENCE, with the center-line of County Highway 39, S 21°-00'-00"W, a distance of 170.96 feet to the point of beginning.

Containing 4.143 acres, of which 0.098 acre is within the highway right-of-way.

The basis for bearings is the center-line of County Highway 39, being N 21°-00'-00"E, and all other bearings are from angles and distances measured in a field survey by Lee Surveying and Mapping Co., Inc. on March 23, 2006.



ORIGINAL STAMP IN GREEN

Description prepared by:

Jeffrey I. Lee
Professional Surveyor 6359
March 27, 2006

426036



REC'D 3-29-06 SWY OR

Lee Surveying and Mapping Co., Inc.

Land Surveys • Topography • Subdivisions • Construction Layout

117 N. Madriver St.
Bellefontaine OH 43311



Phone: (937) 593-7335
Fax: (937) 593-7444

1975-2005 - 30 YEARS OF EXCELLENCE
SWONGUER
0.780 ACRE

Lying in Virginia Military Survey 9904, McArthur Township, Logan County, Ohio.

Being out of the Roland Marion Swonguer original 24.5 acre tract as deeded and described in Volume 352, Page 148, Tract II of the Logan County Records of Deeds and being more particularly described as follows:

Beginning at a 1 inch iron bar found in a monument box on the south line of Virginia Military Survey 9904 at the intersection of center-lines of County Highway 37 and County Highway 39.

THENCE, with the center-line of County Highway 39 (50 feet wide), N 21°-00'-00"E, a distance of 945.70 feet to a MAG nail set at the TRUE POINT OF BEGINNING.

THENCE, with the north lines of the Ronald L. Martz 0.69 acre tract (Vol. 330, Pg. 235) and the Ronald L. Martz 0.10 acre tract (Vol. 378, Pg. 550), S 82°-33'-35"W, a distance of 258.90 feet to a 5/8 inch iron rod set, passing a 5/8 inch iron rod set at 28.43 feet.

THENCE, N 21°-05'-45"E, a distance of 148.94 feet to a 5/8 inch iron rod set.

THENCE, N 82°-19'-39"E, a distance of 259.19 feet to a MAG nail set on the center-line of County Highway 39, passing a 5/8 inch iron rod set at 230.70 feet.

THENCE, with the center-line of County Highway 39, S 21°-00'-00"W, a distance of 150.00 feet to the point of beginning.

Containing 0.780 acre, of which 0.086 acre is within the highway right-of-way.

The basis for bearings is the center-line of County Highway 39, being N 21°-00'-00"E, and all other bearings are from angles and distances measured in a field survey by Lee Surveying and Mapping Co., Inc. on March 23, 2006.

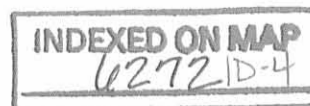


ORIGINAL STAMP IN GREEN

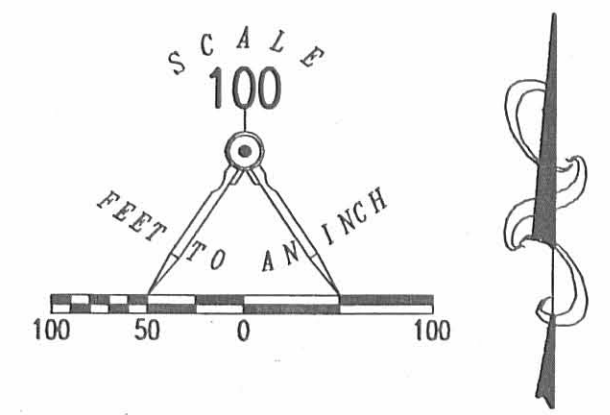
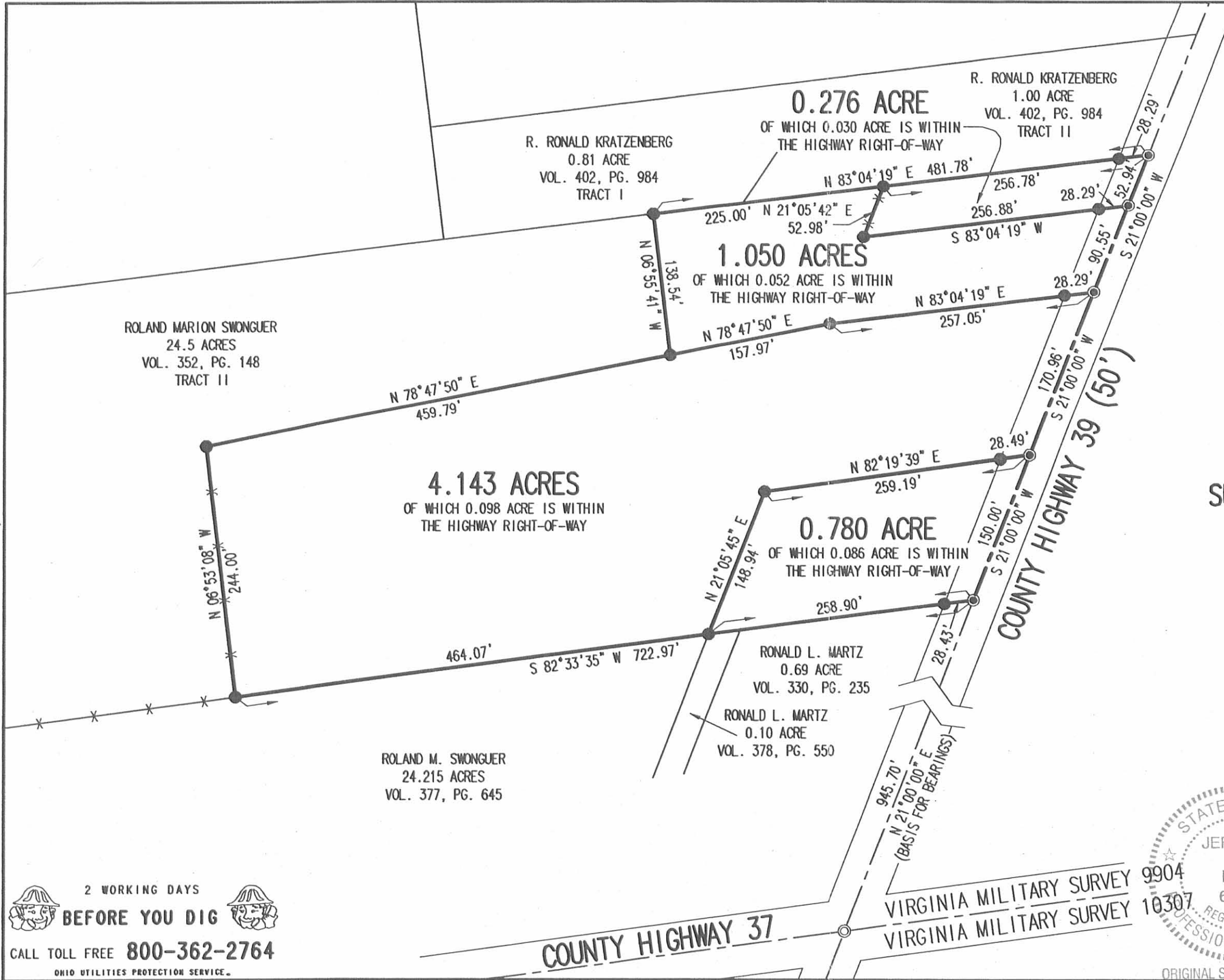
Description prepared by:

A handwritten signature in black ink, appearing to be 'J. Lee'.
Jeffrey J. Lee
Professional Surveyor 6359
March 27, 2006

426036



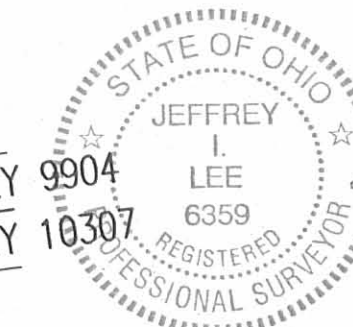
REC'D 3-29-06 SMY OK



- LEGEND:**
- ⊙ 1 INCH IRON BAR FOUND IN MONUMENT BOX
 - MAG NAIL SET
 - 5/8 INCH IRON ROD SET

SURVEY OF FOUR TRACTS OUT OF THE ROLAND MARION SWONGUER ORIGINAL 24.5 ACRE TRACT VOLUME 352, PAGE 148 TRACT II VIRGINIA MILITARY SURVEY 9904 McARTHUR TOWNSHIP LOGAN COUNTY, OHIO

SURVEYED BY:
JEFFREY L. LEE
PROFESSIONAL SURVEYOR 6359
MARCH 23, 2006



COPYRIGHT 2006 BY:
LEE SURVEYING & MAPPING CO., INC.
117 North Madriver Street
BELLEFONTAINE, OHIO 43311
(937) 593-7335

2 WORKING DAYS BEFORE YOU DIG
CALL TOLL FREE **800-362-2764**
OHIO UTILITIES PROTECTION SERVICE.

INDEXED ON MAP
0272.1P

ORIGINAL STAMP IN GREEN KSR D0306 426036 L-426-3

5-9-13

Lee Surveying and Mapping Co., Inc.



Land Surveys • Topography • Subdivisions • Construction Layout

117 N. Madriver St.
Bellefontaine OH 43311



Phone: (937) 593-7335
Fax: (937) 593-7444
surveys@lsminc.us

SWONGUER 21.883 ACRES

Lying in Virginia Military Survey 9904, McArthur Township, Logan County, Ohio.

Being out of the Roland Marion Swonguer original 60 acre tract as deeded and described in Volume 352, Page 148, Tract II of the Logan County Records of Deeds and being more particularly described as follows:

Commencing at a 3/4 inch iron rod found at the intersection of the east corporation line of Huntsville and the center-line of Ohio Route 274 at Station 14+44 (Logan County Engineer's Field Book 598, Page 33)

THENCE, with the center-line of Ohio Route 274 and said corporation line, S 83°-29'-00"W, a distance of 426.60 feet to a MAG nail set at the TRUE POINT OF BEGINNING.

THENCE, S 06°-31'-00"E, a distance of 187.00 feet to a 5/8 inch iron rod set, passing a 5/8 inch iron rod set at 30.00 feet.

THENCE, S 83°-29'-00"W, a distance of 156.00 feet to a 5/8 inch iron rod set.

THENCE, S 06°-31'-01"E, a distance of 796.58 feet to a 5/8 inch iron rod set.

THENCE, S 59°-25'-43"E, a distance of 224.31 feet to a 5/8 inch iron rod set.

THENCE, S 05°-23'-15"E, a distance of 550.45 feet to a 5/8 inch iron rod set.

THENCE, S 81°-39'-48"W, a distance of 601.75 feet to a 5/8 inch iron rod set.

THENCE, with the east right-of-way of U.S. Route 33, the following three courses:

N 25°-25'-11"W, a distance of 442.62 feet to a 5/8 inch iron rod set.

N 21°-26'-49"W, a distance of 786.69 feet to a 5/8 inch iron rod set.

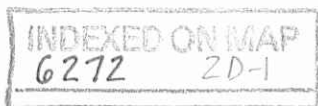
N 10°-09'-25"W, a distance of 14.03 feet to a point.

THENCE, with the lines of the Rod Cavinder and Susan D. Cavinder 1.09 acre tract (O.R. 992, Pg. 822), the following two courses:

N 83°-27'-03"E, a distance of 317.41 feet to a 5/8 inch iron rod set, passing a 5/8 inch iron rod set at 1.00 feet.

N 06°-33'-53"W, a distance of 120.00 feet to a 3/4 inch iron pipe found.

THENCE, with the south line of the David E. Martin 1.742 acre tract (O.R. 895, Pg. 596) and the south line of the Toni Sue Bolon 1.07 acre tract (O.R. 971, Pg. 10, First Parcel), N 83°-24'-59"E, a distance of 331.10 feet to a 5/8 inch iron rod set.



Lee Surveying and Mapping Co., Inc.

Land Surveys • Topography • Subdivisions • Construction Layout

117 N. Madriver St.
Bellefontaine OH 43311



Phone: (937) 593-7335
Fax: (937) 593-7444
surveys@lsminc.us

THENCE, with the east line of the said 1.07 acre tract N 06°-52'-08"W, a distance of 374.87 feet to a 5/8 inch iron rod found, passing a 5/8 inch iron rod found at 344.96 feet.

THENCE, with the center-line of Ohio Route 274 and the south corporation line of Huntsville, N 83°-29'-00"E, a distance of 134.21 feet to a MAG nail set.

THENCE, with the lines of the Jeffrey S. Kramer 0.56 acre tract (O.R. 81, Pg. 188) the following three courses:

S 06°-31'-00"E, a distance of 175.00 feet to a 5/8 inch iron rod set, passing a 5/8 inch iron rod set at 30.00 feet.

N 83°-29'-00"E, a distance of 140.00 feet to a 5/8 inch iron rod set.

N 06°-31'-00"W, a distance of 175.00 feet to a MAG nail set, passing a 5/8 inch iron rod set at 145.00 feet.

THENCE, with the center-line of Ohio Route 274 and the south corporation line of Huntsville, N 83°-29'-00"E, a distance of 16.00 feet to the point of beginning.

Containing 21.883 acres, of which 0.103 acre is within the highway right-of-way.

Property is subject to any and all previous easements and rights-of-way of record.

The basis for bearings is the center-line of Ohio Route 274, being S 83°-29'-00"W, and all other bearings are from angles and distances measured in a field survey by Lee Surveying and Mapping Co., Inc. on May 6, 2013.



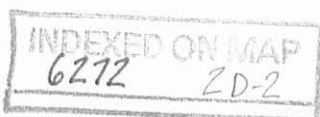
ORIGINAL STAMP IN GREEN

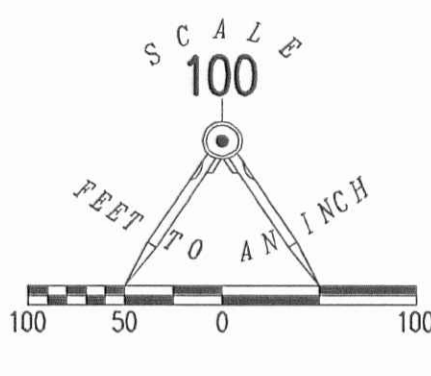
Description prepared by:

A handwritten signature in black ink that reads 'William K. Bruce'.

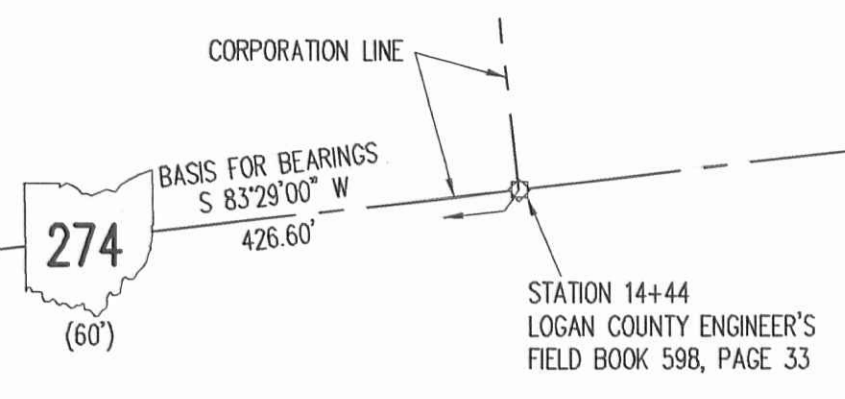
William K. Bruce
Professional Surveyor 7437
May 6, 2013

L-5527

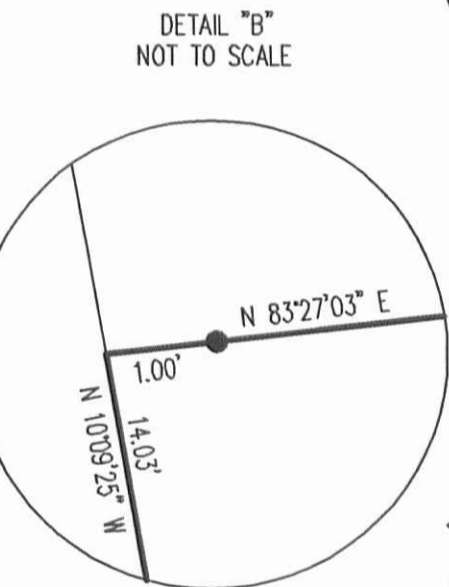
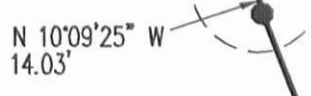
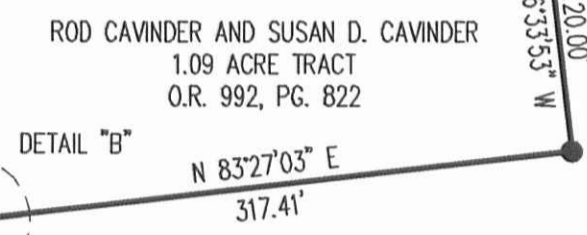
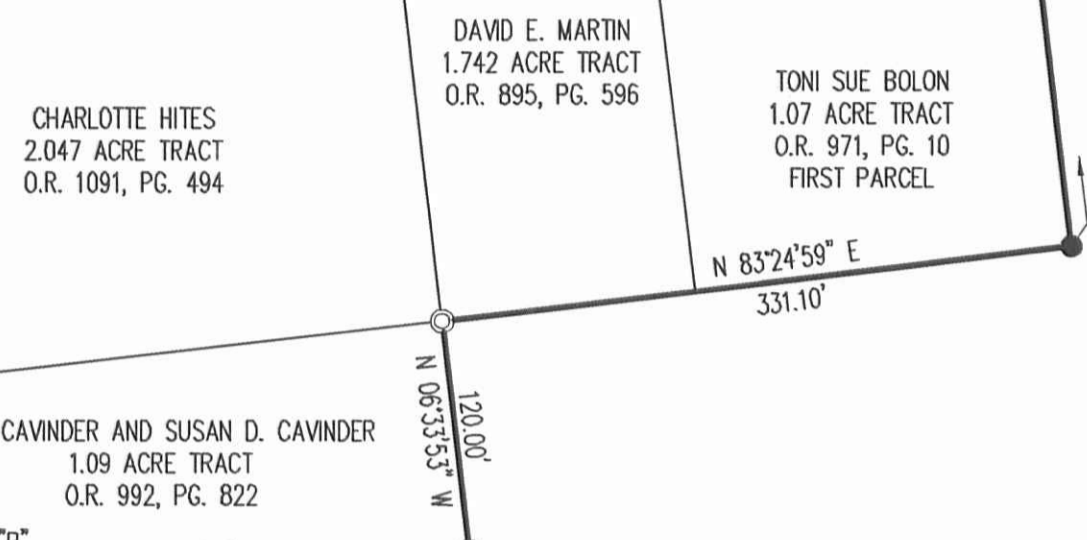




- LEGEND
- 5/8 INCH IRON ROD SET WITH PLASTIC I.D. CAP STAMPED "LSM7437"
 - 5/8 INCH IRON ROD FOUND
 - ⊙ MAG NAIL SET
 - ⊗ 3/4 INCH IRON ROD FOUND
 - ⊙ 3/4 INCH IRON PIPE FOUND



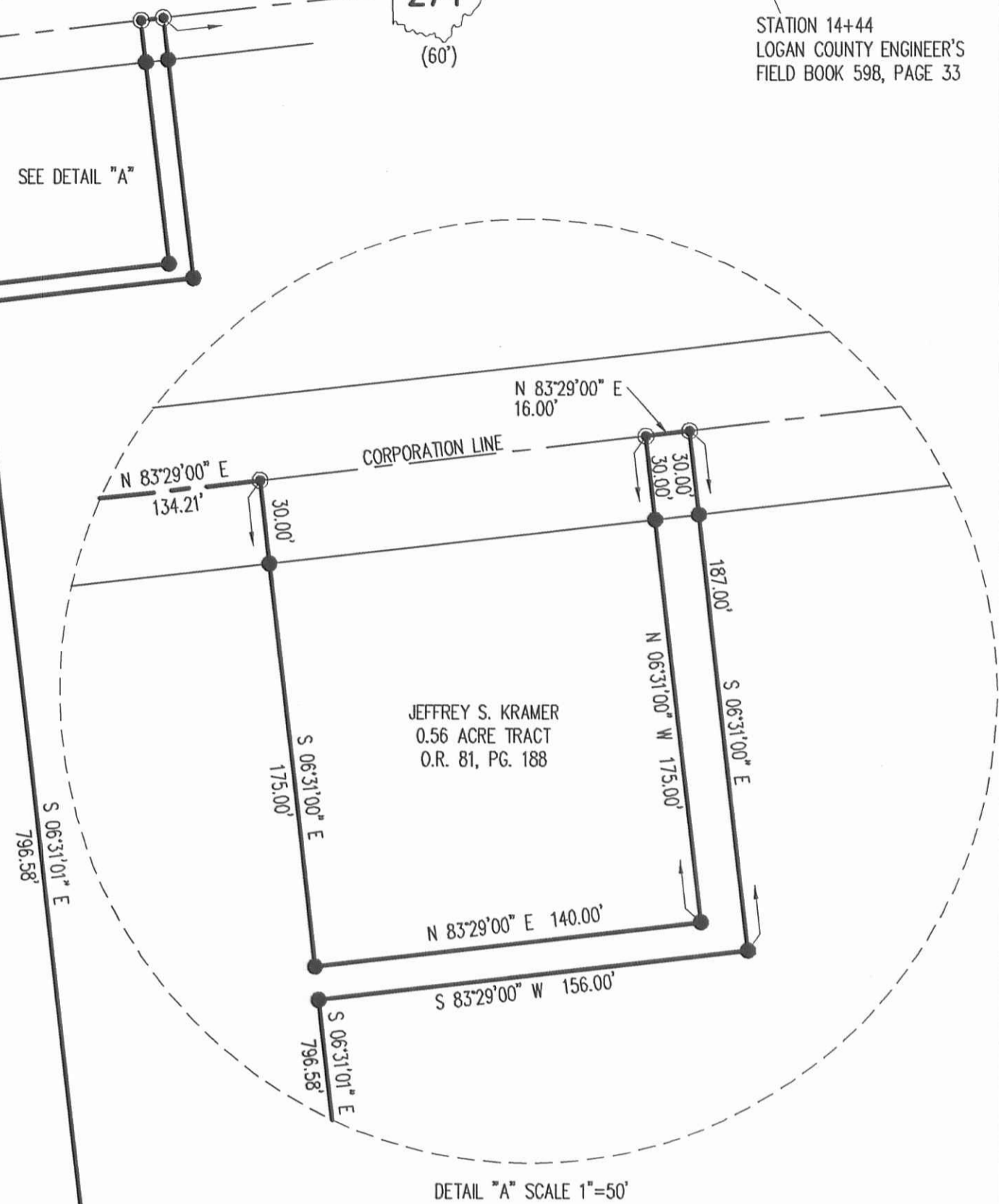
LIMA STREET
 117
 (WIDTH VARIES)



33
 (WIDTH VARIES)

21.883 ACRES
 OF WHICH 0.103 ACRE IS WITHIN THE HIGHWAY
 RIGHT-OF-WAY.

ROLAND MARION SWONGUER
 ORIGINAL 60 ACRE TRACT
 VOL. 352, PG. 148
 TRACT II



A SURVEY OF A
 21.883 ACRE TRACT OUT OF THE
 ROLAND MARION SWONGUER
 ORIGINAL 60 ACRE TRACT
 VOLUME 352, PAGE 148, TRACT II
 VIRGINIA MILITARY SURVEY 9904
 McARTHUR TOWNSHIP
 LOGAN COUNTY, OHIO

SURVEYED BY:

 WILLIAM K. BRUCE
 PROFESSIONAL SURVEYOR 7437
 MAY 6, 2013



COPYRIGHT 2013 BY:
 LEE SURVEYING & MAPPING CO.
 117 North Madriver Street, INC.
 BELLEFONTAINE, OHIO 43311
 (937) 593-7335
 WWW.LSMINC.US
 surveys@lsminc.us

2 WORKING DAYS
 BEFORE YOU DIG
 CALL TOLL FREE 800-362-2764
 OHIO UTILITIES PROTECTION SERVICE

INDEXED ON MAP
 6272 ZP