

Lee Surveying and Mapping Co.



Farm Surveys • Lot Surveys • Topography • Subdivisions • Construction Layout

855 EAST SANDUSKY AVENUE
BELLEFONTAINE, OHIO 43311

(513) 593-5780

CLAYTON M. LEE, P.S.
JEFFREY I. LEE, P.S.

SMITH 1.762 ACRE SURVEY

Lying in V.M.S. 9904, McArthur Township, Logan County, Ohio.

Being a part of that 25 acre tract deeded and described in Volume 315, Page 704 of the Logan County Records of Deeds and more particularly described as follows:

Beginning at a railroad spike found on the center-line of County Road 39 at the southwest corner of said 25 acre tract. This point designated as being Station 13+21 in the Logan County Engineer's Field Book 579, Page 11.

THENCE, with the center-line of County Road 39, N 21°-45' E, a distance of 300.00 feet to an iron spike set for the northwest corner of this survey.

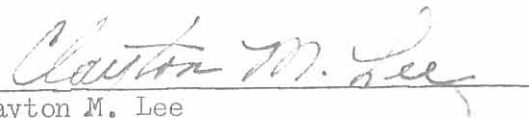
THENCE, N 82°-35'-40" E, a distance of 219.95 feet to an iron rod set for the northeast corner.

THENCE, S 7°-24'-20" E, a distance of 261.99 feet to an iron rod set on the north line of a 9.72 acre tract (Volume 373, Page 431). The same being the south of the said 25 acres.

THENCE, with said south line, S 82°-35'-40" W, a distance of 366.10 feet to the point of beginning. Containing 1.762 acres.

Last previous deed reference: Volume 269, Page 539.

Surveyed by:



Clayton M. Lee
Reg. Surveyor No. 6181
3-19-80



6389

ID-1

INDEXED ON MAP

Lee Surveying and Mapping Co.



Farm Surveys • Lot Surveys • Topography • Subdivisions • Construction Layout

855 EAST SANDUSKY AVENUE
BELLEFONTAINE, OHIO 43311

(513) 593-5780

CLAYTON M. LEE, P.S.
JEFFREY I. LEE, P.S.

SMITH TO KOHLI

Lying in V.M.S. 9904, McArthur Township, Logan County, Ohio.

Being the major part of that 25 acres (23.00 acres) deeded and described in Volume 315, Page 704 of the Logan County Records of Deeds and more particularly described as follows:

Beginning at an iron spike set on the center-line of County Road 39 marking the northwest corner of said 25 acres, the same being the southwest corner of a 96.48 acre tract (Volume 370, Page 566, Tract 2) and designated as being Station 21+36 in the Logan County Engineer's Field Book 579, Page 12. This point designated as being Station 21+35 in deed description of said 96.48 acres.

THENCE, with the south line of said 96.48 acres, N 82°-29'-10" E, a distance of 1316.38 feet to an iron rod set by a corner post at the northeast corner of said 25 acres. The same being the northwest corner of a 26 acre tract. (Volume 251, Page 490).

THENCE, with the west line of said 26 acres, S 7°-08'-30" E, a distance of 714.22 feet to an iron rod set by a corner post in the north line of a 63.5 acre tract. (Volume 269, Page 539).

THENCE, with said north line, S 82°-35'-40" W, a distance of 1344.03 feet to an iron rod set at the southeast corner of a 1.762 acre tract. (Retained portion of a 25 acre tract).

THENCE, with the east line of said 1.762 acre tract, N 7°-24'-20" W, a distance of 261.99 feet to an iron rod set at the northeast corner of said 1.762 acres.

THENCE, with the north line of said 1.762 acres, S 82°-35'-40" W, a distance of 219.95 feet to an iron spike set on the center-line of County Road 39.

THENCE, with said center-line, N 21°-45' E, a distance of 514.97 feet to the point of beginning. Containing 23.00 acres.

Last previous deed reference: Volume 370, Page 704.



Surveyed by:

Clayton M. Lee

Clayton M. Lee
Reg. Surveyor No. 6181
3-19-80

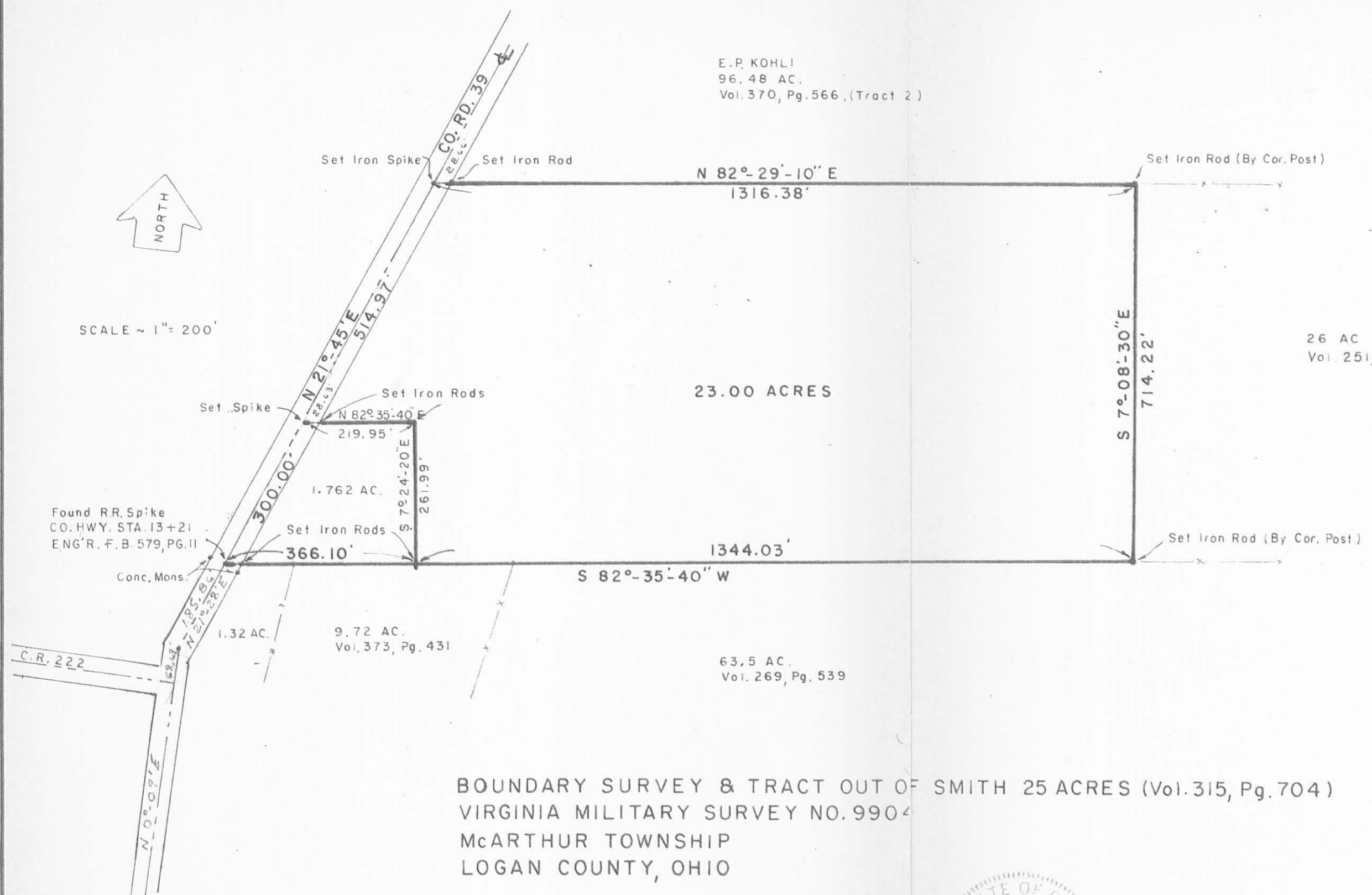
6389

ID-2

INDEXED ON MAP



SCALE ~ 1" = 200'



E.P. KOHLI
96.48 AC.
Vol. 370, Pg. 566, (Tract 2)

26 AC
Vol. 251, Pg. 490

23.00 ACRES

Found RR Spike
CO. HWY. STA. 13+21
ENG'R. F. B. 579, PG. 11

1.762 AC.
Vol. 373, Pg. 431

1344.03'
S 82°-35'-40" W

1.32 AC.
9.72 AC.
Vol. 373, Pg. 431

63.5 AC.
Vol. 269, Pg. 539

BOUNDARY SURVEY & TRACT OUT OF SMITH 25 ACRES (Vol. 315, Pg. 704)
VIRGINIA MILITARY SURVEY NO. 9904
McARTHUR TOWNSHIP
LOGAN COUNTY, OHIO

6389 IP

INDEXED ON MAP

By: *Clayton M. Lee*
Clayton M. Lee
Reg. Surveyor 6181
3-19-80



LEE SURVEYING & MAPPING CO.
155 E. Sandusky Ave.
BELLFONTAINE, OHIO 43311
(513) 593-5780

TOLERANCES (EXCEPT AS NOTED)	REVISIONS			DRAWN BY <i>C.M.L.</i>	SCALE 1" = 200'	MATERIAL
	NO.	DATE	BY			
DECIMAL	1			CHK'D <i>J.I.L.</i>	DATE 3-20-80	DRAWING NO. L-699-3
±	2					
FRACTIONAL	3			TRACED	APP'D	
±	4					
ANGULAR	5					
±						

Received 7-3-95 OK JLL



Lee Surveying and Mapping Co.



Farm Surveys • Lot Surveys • Topography • Subdivisions • Construction Layout

143 EAST COLUMBUS AVENUE
BELLEFONTAINE, OHIO 43111

(513) 593-7335

JEFFREY I. LEE, P.S.

SHELLENBARGER 2.000 ACRES

Lying in Virginia Military Survey 9904, McArthur Township, Logan County, Ohio.

Being out of the Arthur V. Shellenbarger 23.00 acre tract as deeded and described in Official Record 42, Page 688, Tract IV of the Logan County Records of Deeds and being more particularly described as follows:

Beginning at a 1 inch square iron bar found at the intersection of center-lines of County Highway 222 and County Highway 39.

THENCE, with the center-line of County Highway 39 the following three courses:

N 0°-23'-32" E, a distance of 67.06 feet to a 3/4 inch iron pipe found.

N 21°-23'-27" E, a distance of 185.76 feet to a 5/8 inch iron bar found.

N 21°-45'-00" E, a distance of 557.49 feet to a railroad spike set at the TRUE POINT OF BEGINNING.

THENCE, with the center-line of County Highway 39, N 21°-45'-00" E, a distance of 257.48 feet to an iron spike found.

THENCE, with the south line of the Arthur Shellenbarger 96.48 acre tract (O.R. 42, Pg. 688, Tr. II), N 82°-30'-26" E, a distance of 111.73 feet to a 5/8 inch iron rod set.

THENCE, S 81°-44'-57" E, a distance of 52.77 feet to a 5/8 inch iron rod set.

THENCE, S 58°-36'-31" E, a distance of 162.75 feet to a 5/8 inch iron rod set.

THENCE, S 7°-29'-34" E, a distance of 188.50 feet to a 5/8 inch iron rod set.

THENCE, N 86°-32'-23" W, a distance of 422.69 feet to the point of beginning.

Containing 2.000 acres of which 0.149 acre is within the highway right-of-way.

The basis for bearings is based upon the center-line of County Highway 39 along the frontage of the 2.000 acre tract is N 21°-45'-00" E, and all other bearings are from angles and distances measured in a field survey by Lee Surveying and Mapping Company on March 18, 1993.

Description prepared by:



Jeffrey I. Lee
Professional Surveyor 6359
March 18, 1993
Revised June 30, 1995

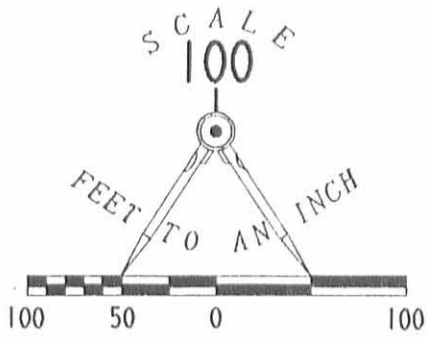
L 699

ORIGINAL STAMP IN GREEN

INDEXED ON MAP
63892D



ARTHUR V. SHELLNBARGER
96.48 ACRES
O.R. 42, PG. 688, TR. 11



COUNTY HIGHWAY 39 (50')

2.000 ACRES
OF WHICH 0.149 ACRE IS WITHIN
THE HIGHWAY RIGHT-OF-WAY.

ARTHUR V. SHELLNBARGER
23.00 ACRES
O.R. 42, PG. 688, TR. IV

JOYCE A. COOPER
1.762 ACRES
O.R. 117, PG. 255

SURVEY OF 2.000 ACRES OUT OF THE
ARTHUR V. SHELLNBARGER 23.00 ACRES
OFFICIAL RECORD 42, PAGE 688, TRACT IV
VIRGINIA MILITARY SURVEY 9904
McARTHUR TOWNSHIP
LOGAN COUNTY, OHIO

REFERENCES:

1. LOGAN COUNTY ENGINEER'S FIELD BOOK 579, PAGE 11.
2. LOGAN COUNTY ENGINEER'S SURVEY RECORDS
DRAWER "R", FILE NUMBER 6389.

INDEXED ON MAP
6389 2P



ORIGINAL STAMP IN GREEN

SURVEYED BY:

(Signature)
JEFFREY I. LEE
PROFESSIONAL SURVEYOR 6359
MARCH 18, 1993
REV. JUNE 30, 1995

LEE SURVEYING & MAPPING CO.
143 East Columbus Avenue
BELLEFONTAINE, OHIO 43311
(513) 593-7335

2 WORKING DAYS
BEFORE YOU DIG
CALL TOLL FREE **800-362-2764**
OHIO UTILITIES PROTECTION SERVICE.

D 213 SHLLNBRG

L-699-3