

FB 708

T.R. 220 & T.R. 46  
Mr. Arthur Twp

Stone Found

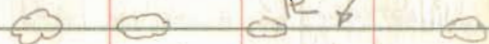


T.R. 220

See Pg 68 this Book

T.R. 31  
724.55

Stone Found



R 7

See F.B. 57 Pg. 46 & 49  
For T.R. 46 @ 220

Dodson-Nichols  
Dill - Pruitt

Oct 1980

70

Pointed limestone  
w/ tile found 2'

Stone w/ tile  
found 2'  
Deep

2" Pipe found  
18" deep  
(well point)

724.7

Stone Found  
2' deep  
2' E. of W. edge  
of point.

376.84

T.R. 220

6692

INDEXED ON MAP

Stone Found  
3' E. of W. edge  
of Point.  
2' deep

FB 708

T.R. 46 @ T.R. 220

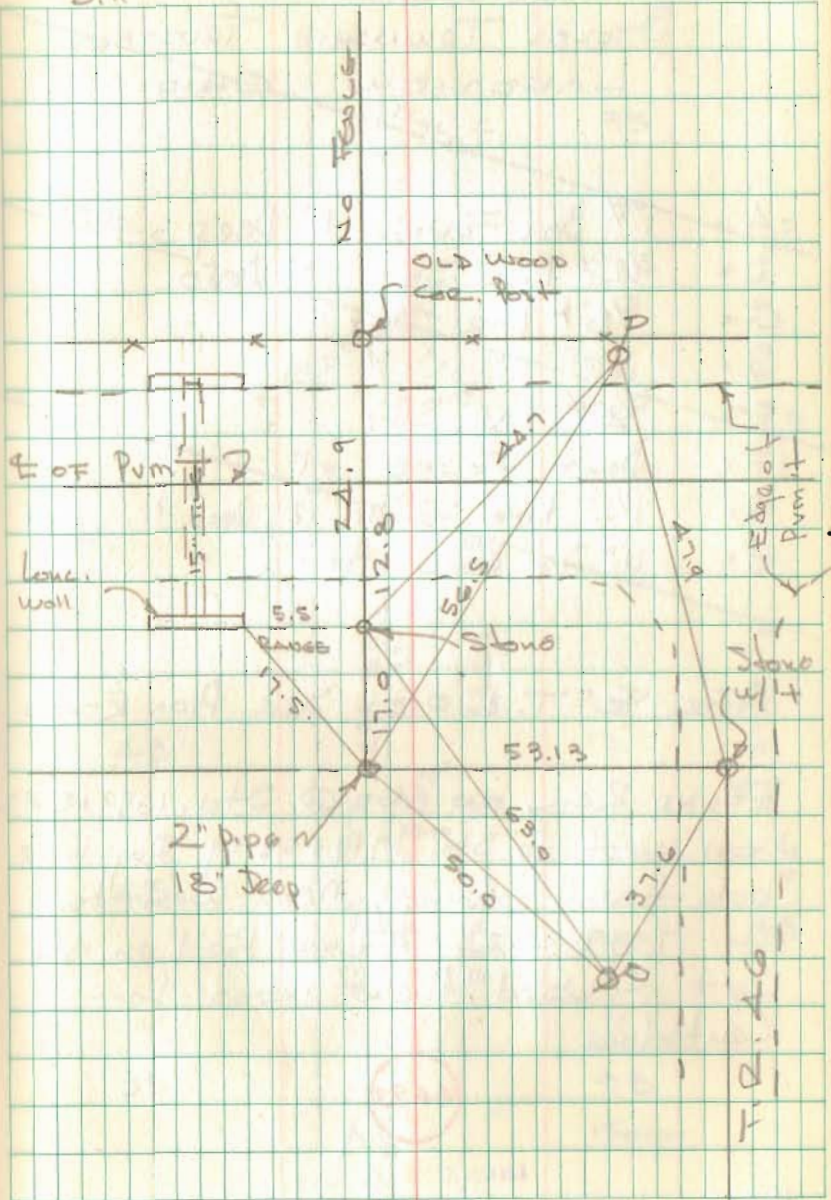
McArthur Tract

See F.D. 57 Pg. 46

Dodson  
Nichols  
D. 11

9/30/80

71





Resurvey Part of T.R. 220  
(from T.R. 31 to T.R. 46)  
McArthur Twp., Logan Co., Ohio V.M.S. 10122

17+27.25 - R.R. Spike set -

FB 710

Intersection NEW  $\&$  T.R. 220  
 $\&$  T.R. 46

Note:

No record of this section (from  
T.R. 31 to T.R. 46) of T.R. 220 has been found.  
As with the North end of T.R. 31, the  
established property line does not fit  
the present location of the pavement.  
Acting upon the Logan County  
Prosecutors instruction, a new  $\&$   
which fits the center of the  
pavement as best as possible  
was established. As per O.R.C.  
statute 2729.13 the width of this  
section of T.R. 220 is 40 feet.  
See page 50 of this book.

C. Dill

D+00 - Stone Fd. - Intersection

$\&$  T.R. 220  $\&$  T.R. 31

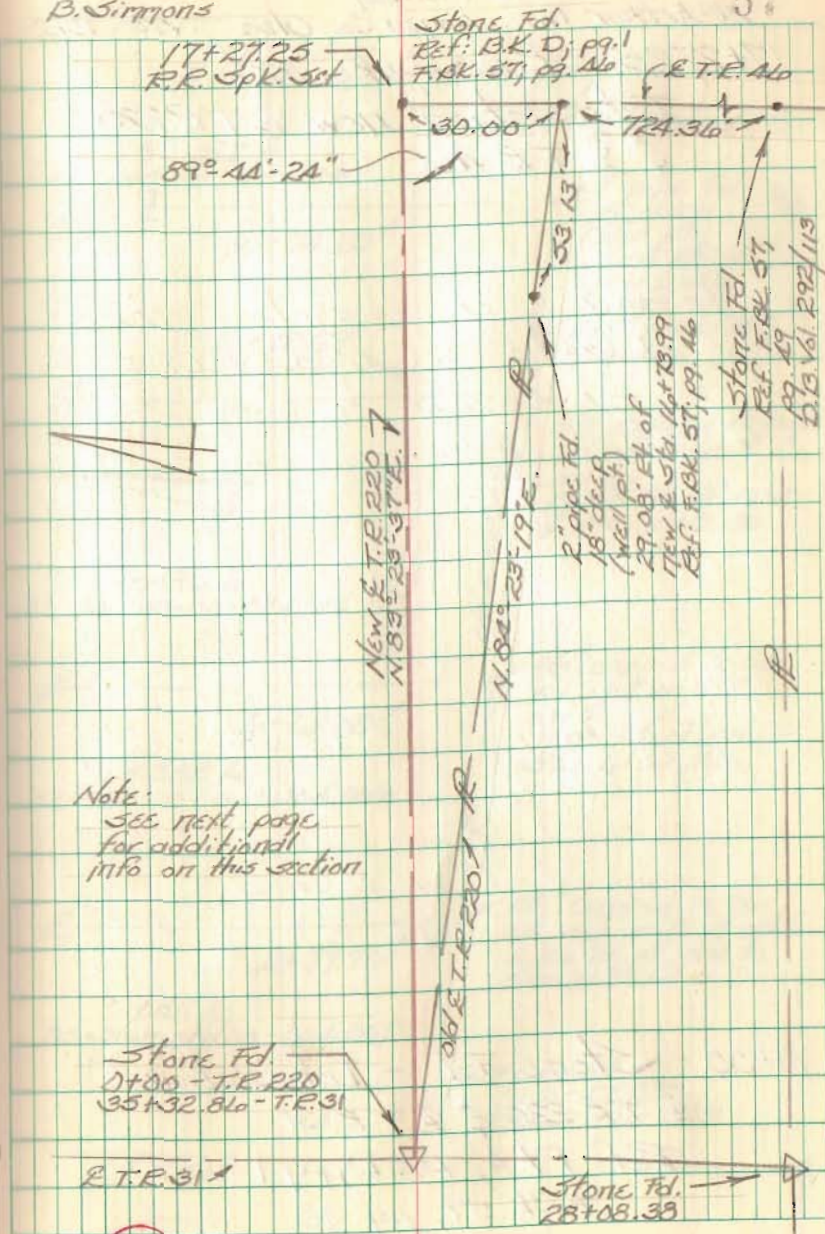
Ref: pt. A, B.K. D, pg. 1

F.B.K. 57; pg. 38

C. Nichols  
C. Dill  
B. Simmons

Aug. - Sept. 97

57



6692



Resurvey Part of T.R. 220  
(from T.R. 31 to T.R. 16)  
McArthur Twp., Logan Co., Ohio V.M.S. 10122

17+27.25 - R.R. Spike set -  
FB 710 Intersection NEW & T.R. 220  
& T.R. 16.

0+00 - Stone Fd. - Intersection  
& T.R. 220 & T.R. 31  
Ref: Pt. A, BK. D, pg. 1  
F.BK. 57, pg. 38

C. Nichols  
C. Dill  
B. Simmons

Aug. - Sept. 97

53

