

Received 9-4-85 OK E.C.D.

Lee Surveying and Mapping Co.



Farm Surveys • Lot Surveys • Topography • Subdivisions • Construction Layout

855 EAST SANDUSKY AVENUE
BELLEFONTAINE, OHIO 43311

(513) 593-5780

CLAYTON M. LEE, P.S.
JEFFREY I. LEE, P.S.

RUTHERFORD 13.964 ACRES

Lying in V.M.S. 9932, McArthur Township, Logan County, Ohio.

Being out of that 44.49 acre tract (Auditor Parcel 45.002) as deeded and described in Deed Volume 263, Page 589 (77.45 acres) and D.V. 319, Page 340 (2.14 acres) and being more particularly described as follows:

Beginning at a railroad spike set on the center-line of Township Road 113, marking the southwest corner of the said 44.49 acres.

THENCE, with the west line of said 2.14 acres, N 6°-38'-40" W, a distance of 380.00 feet to a 5/8" iron rod at the northwest corner of a 1.754 acre tract. THE TRUE POINT OF BEGINNING.

THENCE, continuing with the west line of said 2.14 acre tract and the west line of said 44.49 acre tract, N 6°-38'40" W, a distance of 1516.23 feet to a 5/8" iron rod set at the northwest corner of said 44.49 acre tract.

THENCE, with the grantor's north line, N 84°-10'-10" E, a distance of 200.03 feet to a 5/8" iron rod.

THENCE, with a ditch line extended and a ditch and brush line, the following 4 bearings and distances:

S 7°-48'-20" E, a distance of 720.72 feet to a 5/8" iron rod.

S 66°-50'-20" E, a distance of 143.02 feet to a 5/8" iron rod.

S 12°-17' E, a distance of 530.80 feet to a 5/8" iron rod.

S 37°-26'-15" E, a distance of 677.21 feet to a railroad spike set on the center-line of Township Road 113, passing a 5/8" iron rod set at 642.05 feet.

THENCE, with said road center-line, S 84°00' W, a distance of 535.95 feet to a railroad spike at the southeast corner of a 1.754 acre tract.

THENCE, with the east line of said 1.754 acre tract, N 6°-20' W, a distance of 380.00 feet to a 5/8" iron rod.

THENCE, with the north line of said 1.754 acre tract, S 84°-00' W, a distance of 202.06 feet to the point of beginning. Containing 13.964 acres of which 12.757 acres are out of the 77.45 acre tract and 1.207 acres are out of the 2.14 acre tract.

Prepared by:

Clayton M. Lee

Clayton M. Lee
Professional Surveyor No. 6181
August 29, 1985

INDEXED ON MAP
74Z11D-1



This description prepared from an actual field survey.

ORIGINAL STAMP IN GREEN

Received 9-4-85 OK E.C.P.
Lee Surveying and Mapping Co.



Farm Surveys • Lot Surveys • Topography • Subdivisions • Construction Layout

855 EAST SANDUSKY AVENUE
BELLEFONTAINE, OHIO 43311

(513) 593-5780

CLAYTON M. LEE, P.S.
JEFFREY I. LEE, P.S.

RUTHERFORD 1.754 ACRES

Lying in V.M.S. 9932, McArthur Township, Logan County, Ohio

Being out of that 44.49 acre tract (Auditor Parcel 45.002) as deeded and described in Deed Volume 263, Page 589 (77.45 acres) and D.V. 319, Page 340 (2.14 acres) and being more particularly described as follows:

Beginning at a railroad spike set on the center-line of Township Road 113, marking the southwest corner of the said 44.49 acres.

THENCE, with the west line of said 2.14 acres, N 6°-38'-40" W, a distance of 380.00 feet to a 5/8" iron rod. Passing a 5/8" iron rod set at 30 feet.


THENCE, parallel to the road, N 84°-00' E, a distance of 202.06 feet to a 5/8" iron rod.

THENCE, S 6°-20' E, a distance of 380.00 feet to a railroad spike set on the center-line of Township Road 113, passing a 5/8" iron rod set at 350.00 feet.

THENCE, with the said road center-line, S 84°-00' W, a distance of 200.00 feet to the point of beginning.

Containing 1.754 acres; of which 0.821 acre is out of the 77.45 acre tract and 0.933 acre is out of the 2.14 acre tract.

Prepared by:

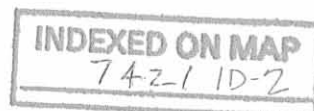


Clayton M. Lee
Professional Surveyor No. 6181
August 29, 1985

This description prepared from an actual field survey.



ORIGINAL STAMP IN GREEN

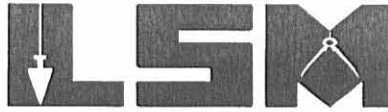


RCD 4-19-06 SMM OK

Lee Surveying and Mapping Co., Inc.

Land Surveys • Topography • Subdivisions • Construction Layout

117 N. Madriver St.
Bellefontaine OH 43311



Phone: (937) 593-7335
Fax: (937) 593-7444

1975-2005 - 30 YEARS OF EXCELLENCE

**YODER
0.581 ACRE**

Lying in Virginia Military Survey 9932, McArthur Township, Logan County, Ohio.

Being out of the Alvin W. Yoder and Leora Yoder 13.964 acre tract as deeded and described in Official Record 18, Page 852 of the Logan County Records of Deeds and being more particularly described as follows:

Beginning at a MAG nail found on the intersection of center-lines of U.S Route 68 and County Highway 113.

THENCE, with the center-line of County Highway 113 (60 feet wide), S 84°-00'-00"W, a distance of 2475.41 feet to a railroad spike found.

THENCE, with the west line of The Belle Center Amish Parochial Schools 1.754 acre tract (O.R. 623, Page 732) and the east line of the Louise D. Shields 72.50 acre tract (Vol. 354, Pg. 536), N 6°-38'-40"W, a distance of 380.00 feet to a 3 inch tree found at the TRUE POINT OF BEGINNING.

THENCE, with the east line of the said 72.50 acre tract, N 6°-38'-40"W, a distance of 125.00 feet to a 5/8 inch iron rod set, passing a 5/8 inch iron rod set at 2.00 feet.

THENCE, N 83°-59'-54"E, a distance of 202.74 feet to a 5/8 inch iron rod set.

THENCE, S 6°-20'-02"E, a distance of 125.00 feet to a 5/8 inch iron rod set.

THENCE, with the north line of the aforesaid 1.754 acre tract, S 84°-00'-00"W, a distance of 202.06 feet to the point of beginning.

Containing 0.581 acre.

The basis for bearings is the center-line of County Highway 113, being S 84°-00'-00"W, and all other bearings are from angles and distances measured in a field survey by Lee Surveying and Mapping Co., Inc. on April 14, 2006.

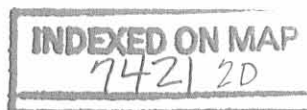


ORIGINAL STAMP IN GREEN

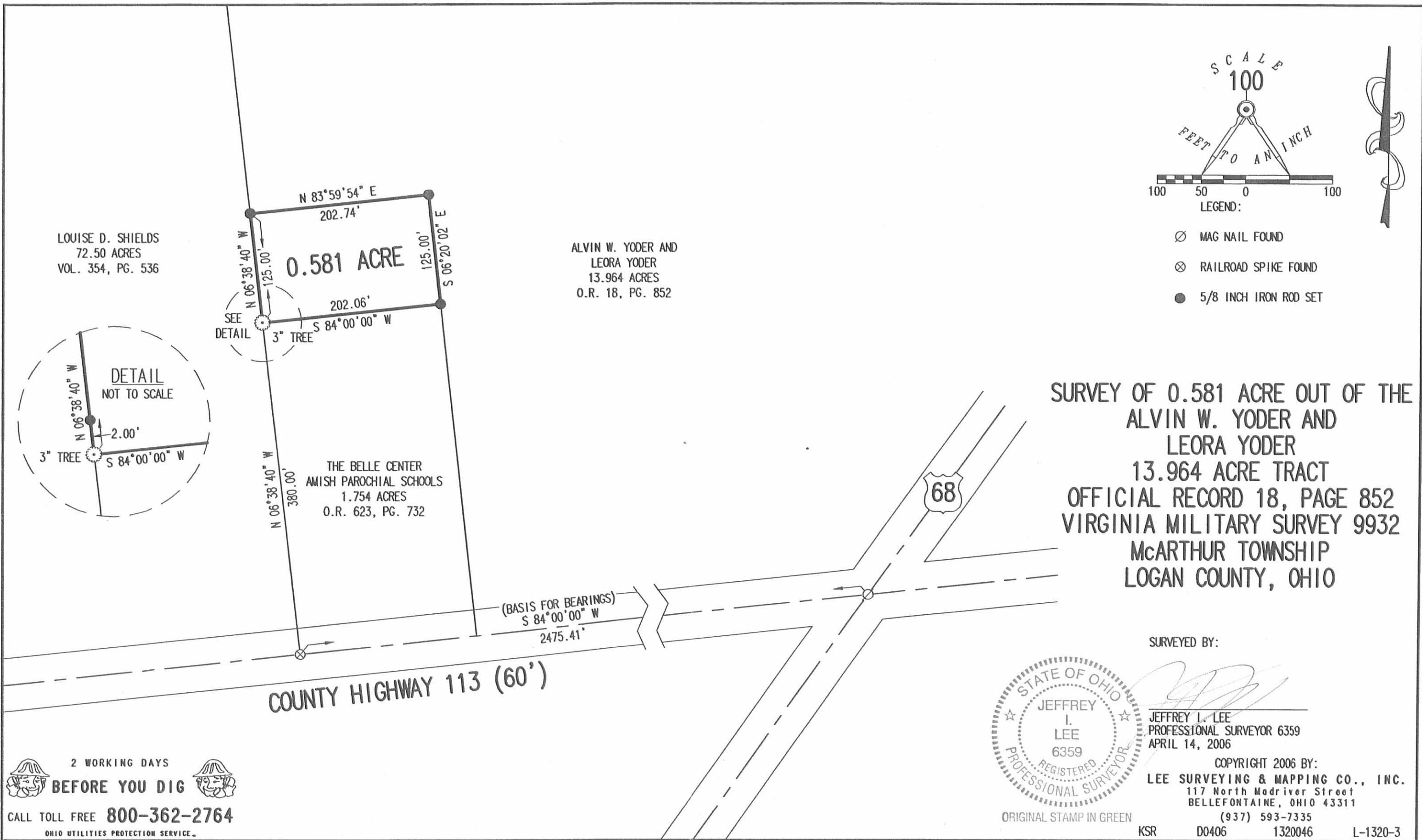
Description prepared by:


Jeffrey I. Lee
Professional Surveyor 6359
April 14, 2006

1320046



RED 4-19-06 DWY OK

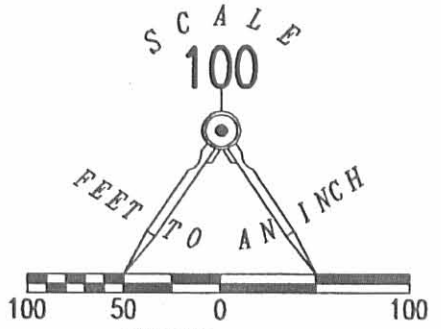


LOUISE D. SHIELDS
72.50 ACRES
VOL. 354, PG. 536

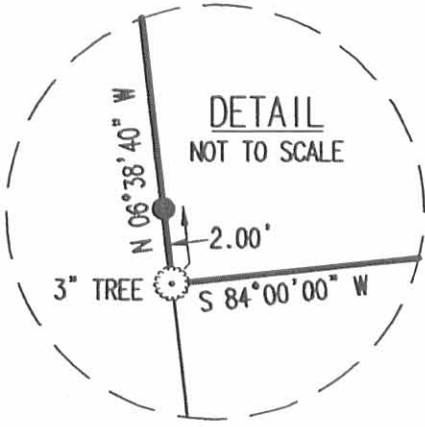
ALVIN W. YODER AND
LEORA YODER
13.964 ACRES
O.R. 18, PG. 852

THE BELLE CENTER
AMISH PAROCHIAL SCHOOLS
1.754 ACRES
O.R. 623, PG. 732

**SURVEY OF 0.581 ACRE OUT OF THE
ALVIN W. YODER AND
LEORA YODER
13.964 ACRE TRACT
OFFICIAL RECORD 18, PAGE 852
VIRGINIA MILITARY SURVEY 9932
McARTHUR TOWNSHIP
LOGAN COUNTY, OHIO**



- ⊙ MAG NAIL FOUND
- ⊗ RAILROAD SPIKE FOUND
- 5/8 INCH IRON ROD SET



SURVEYED BY:



Jeffrey I. Lee
 JEFFREY I. LEE
 PROFESSIONAL SURVEYOR 6359
 APRIL 14, 2006

COPYRIGHT 2006 BY:
LEE SURVEYING & MAPPING CO., INC.
 117 North Madriver Street
 BELLEFONTAINE, OHIO 43311
 (937) 593-7335
 KSR D0406 1320046 L-1320-3

2 WORKING DAYS
BEFORE YOU DIG
 CALL TOLL FREE **800-362-2764**
 OHIO UTILITIES PROTECTION SERVICE.

INDEXED ON MAP
 7421 2P