

Lee Surveying and Mapping Co.



Farm Surveys • Lot Surveys • Topography • Subdivisions • Construction Layout

855 EAST SANDUSKY AVENUE
BELLEFONTAINE, OHIO 43311

(513) 593-5780

CLAYTON M. LEE, P.S.
JEFFREY I. LEE, P.S.

JENKINS 5.00 ACRES

Lying in V.M.S. 12350-13274, McArthur Township, Logan County, Ohio.

Being out of that 10 acre tract in the name of Jenkins (Volume 184, Page 467).

Beginning at a 1½" iron pipe found at the southeast corner of V.M.S. 12350-13274. This point being on an angle in the center-line of Township Road 36 and being the southeast corner of the aforesaid 10 acre tract.

THENCE, with the south line of the said 10 acre tract and the south V.M.S. line, S 78°-26'-42" W, a distance of 716.42 feet to a 5/8" iron rod set at the southwest corner of said 10 acre tract.

THENCE, with the west line of said 10 acre tract, N 12°-00' W, a distance of 304.02 feet to a 5/8" iron rod.

THENCE, parallel to the south line, N 78°-26'-42" E, a distance of 716.42 feet to a railroad spike set on the center-line of Township Road 36.

THENCE, with said center-line, S 12°-00' E, a distance of 304.02 feet to the point of beginning.

Containing 5.00 acres.

This description prepared from an actual field survey.
Basis for bearings: Center-line of Township Road 36 (S 12°-00' E).

Prepared by:

Clayton M. Lee
Registered Professional Surveyor No. 6181
October 21, 1987



ORIGINAL STAMP

INDEXED ON MAP
7694 10

115.06 AC



N. PT. OF ORIG. 10 AC. TRACT
H. JENKINS (VOL. 184, PG. 467)

5.00 ACRES

N 78°-26'-42" E
716.42'

S 78°-26'-42" W
716.42'

TWP. RD. 36

S 12°-00' E
304.02'

BASIS FOR BEARINGS

V.M.S. 12350-13274
V.M.S. 12320

P.O.B.

TWP. RD. 36

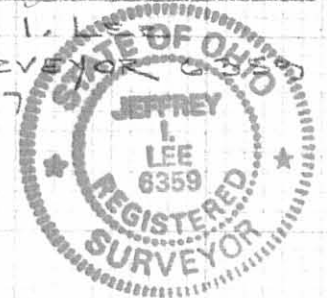
INDEXED ON MAP
7694 1P

SCALE = 1" = 100'

- = 1/2" IRON PIPE FOUND
- ⊗ = RR SPIKE SET
- = 5/8" IRON ROD SET

SURVEY OF 5.00 ACRES OFF THE
SOUTH SIDE OF THE H. JENKINS
10 ACRE TRACT (VOL. 184, PG. 467)
V.M.S. 12350-13274, McARTHUR TWP.
LOGAN COUNTY, OHIO

By: *[Signature]*
JEFFREY L. LEE
REG. SURVEYOR
9-30-87



ORIGINAL STAMP IN GREEN

R.V. MUSSER
151 AC. 293/160

WHITAKER 66 AC.
298/354 (PARC. 2, TR. 1)

L-1457-4



Lee Surveying and Mapping Co.



Farm Surveys • Lot Surveys • Topography • Subdivisions • Construction Layout

143 EAST COLUMBUS AVENUE
BELLEFONTAINE, OHIO 43311

(513) 593-7335
(513) 593-5780

CLAYTON M. LEE, P.S.
JEFFREY I. LEE, P.S.

SLATER-DIXON (5.918 ACRES)

Lying in V.M.S. 9903-9928, McArthur Township, Logan County, Ohio.

Being out of that 67 acres in the name of Slater as deeded and described in O.R. 46, Page 586, including all of the 1.00 acre in Tract 2, and being more particularly described as follows:

Beginning at a 5/8" iron rod set at the northwest corner of the said 67 acre tract, being on the north line of said V.M.S. 9903-9928 and the center-line of Township Road 36, extended westerly.

THENCE, with the north line of said V.M.S. 9903-9928, N 78°-26'-42" E, a distance of 889.43 feet to a 5/8" iron rod set on the center-line of Township Road 36, passing through a 1 1/2" iron pipe found at a corner in the center-line of Township Road 36 at 491.43 feet.

THENCE, S 11°-33'-18" E, a distance of 290.00 feet to a 5/8" iron rod (set).

THENCE, parallel to the road center-line, S 78°-26'-42" W, a distance of 888.47 feet to a 5/8" iron rod set on the grantor's west line.

THENCE, with said west line, N 11°-44'-40" W, a distance of 290.00 feet to the point of beginning.

Containing 5.918 acres.

This description prepared from an actual field survey.

Basis for bearings: Center-line Township Road 36 = N 78°-26'-42" E.

Prepared by:

Clayton M. Lee

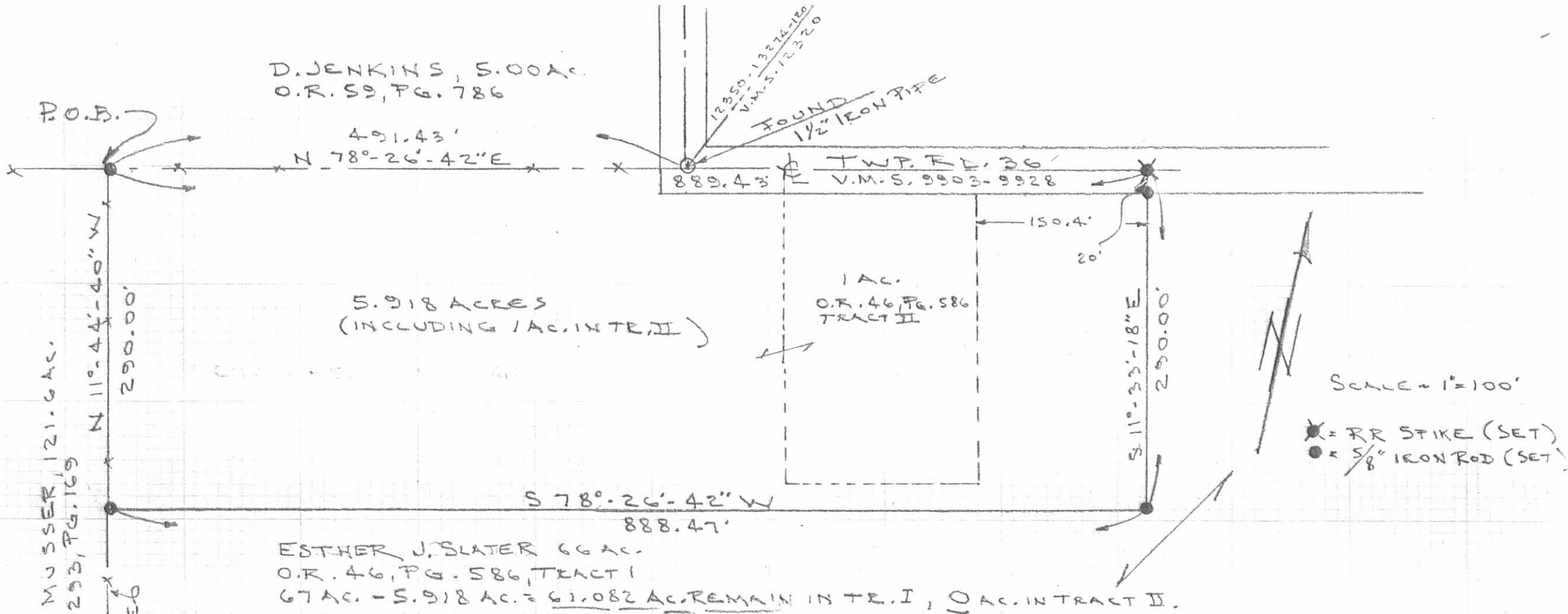
Clayton M. Lee
Registered Surveyor No. 6181
January 29, 1990



ORIGINAL STAMP IN GREEN
ORIGINAL STAMP IN GREEN

L-1457

INDEXED ON MAP
7694 2D



RON MUSSER, 121.6 AC.
VOL. 293, PG. 169
FENCED

SURVEY OF 5.918 ACRES OUT OF THE
E. SLATER 67 AC. (TRACTS I & II, O.R. 46, PG. 586
V.M.S. 9903-9928, McARTHUR TWP.,
LOGAN COUNTY, OHIO

By: *Jeffrey I. Lee*
JEFFREY I. LEE
REG. SURVEYOR 6269
JAN. 24, 1990



INDEXED ON MAP
7694 2P

RE'D 5-6-10 SWM OK

Lee Surveying and Mapping Co., Inc.

Land Surveys • Topography • Subdivisions • Construction Layout

117 N. Madriver St.
Bellefontaine OH 43311



Phone: (937) 593-7335
Fax: (937) 593-7444
surveys@lsminc.us

WHITAKER 59.488 ACRES

Lying in Virginia Military Survey 9903-9928, McArthur Township, Logan County, Ohio.

Being out of the William Whitaker 61.082 acre tract as deeded and described in Official Record 809, Page 387, Tract One of the Logan County Records of Deeds and being more particularly described as follows:

Commencing on a 1-1/2 inch iron pipe found on the southwest corner of Virginia Military Survey 12320, on the north line of Virginia Military Survey 9903-9928 and on an angle point on the center-line of County Highway 36.

THENCE, with the south line of Virginia Military Survey 12320, the north line of Virginia Military Survey 9903-9928 and the center-line of County Highway 36 (60 feet wide), N 82°-49'-43"E, a distance of 397.99 feet to a MAG nail set at the TRUE POINT OF BEGINNING.

THENCE, with the south line of Virginia Military Survey 12320, the north line of Virginia Military Survey 9903-9928 and the center-line of County Highway 36, N 82°-49'-43"E, a distance of 1176.03 feet to a MAG nail set.

THENCE, S 06°-36'-37"E, a distance of 144.64 feet to a 5/8 inch iron rod set, passing a 5/8 inch iron rod set at 30.00 feet.

THENCE, N 83°-07'-31"E, a distance of 150.01 feet to a 5/8 inch iron rod set.

THENCE, N 06°-36'-37"W, a distance of 145.42 feet to a MAG nail set on the south line of Virginia Military Survey 12320, the north line of Virginia Military Survey 9903-9928 and the center-line of County Highway 36, passing a 5/8 inch iron rod set at 115.42 feet.

THENCE, with the south line of Virginia Military Survey 12320, the north line of Virginia Military Survey 9903-9928 and the center-line of County Highway 36, N 82°-49'-43"E, a distance of 238.48 feet to a 5/8 inch iron rod set.

THENCE, with the center-line of County Highway 36, S 06°-41'-20"E, a distance of 1175.03 feet to a railroad spike found, passing a 5/8 inch iron rod set at 267.36 feet.

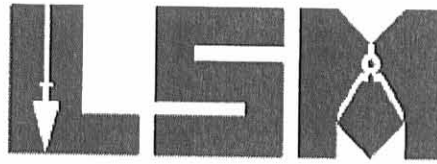
THENCE, with the north lines of the Janet J. Brunner 13.49 acre tract (O.R. 913, Pg. 38) and the Dwight E. Reed 86.51 acre tract (O.R. 91, Pg. 38, Tract II),



Lee Surveying and Mapping Co., Inc.

Land Surveys • Topography • Subdivisions • Construction Layout

117 N. Madriver St.
Bellefontaine OH 43311



Phone: (937) 593-7335
Fax: (937) 593-7444
surveys@lsminc.us

S 82°-54'-54"W, a distance of 2440.40 feet to a 5/8 inch iron rod set at an angle iron post found, passing a 5/8 inch iron rod set at 30.00 feet.

THENCE, with the east line of the W. William Wischmeyer 96.094 acre tract (O.R. 221, Pg. 641), N 07°-20'-59"W, a distance of 880.69 feet to a 5/8 inch iron rod set.

THENCE, with the lines of the Josh T. Klofta 5.918 acre tract (O.R. 958, Pg. 910), the following two courses:

N 82°-44'-54"E, a distance of 888.86 feet to a 5/8 inch iron rod found, passing a 5/8 inch iron rod found at 0.48 feet.

N 07°-14'-24"W, a distance of 289.40 feet to the point of beginning, passing a 5/8 inch iron rod set at 259.40 feet.

Containing 59.488 acres, of which 1.763 acres are within the highway right-of-way.

Property is subject to any and all previous easements and rights-of-way of record.

The basis for bearings is the north line of Virginia Military Survey 9903-9928, being N 82°-49'-43"E, and all other bearings are from angles and distances measured in a field survey by Lee Surveying and Mapping Co., Inc. on April 27, 2010.



ORIGINAL STAMP IN GREEN

Description prepared by:

A handwritten signature in cursive script that reads 'William K. Bruce'.

William K. Bruce
Professional Surveyor 7437
April 29, 2010

4945410

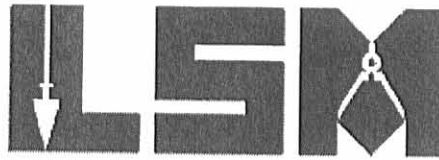


REC'D 5-6-10 SWY OK

Lee Surveying and Mapping Co., Inc.

Land Surveys • Topography • Subdivisions • Construction Layout

117 N. Madriver St.
Bellefontaine OH 43311



Phone: (937) 593-7335
Fax: (937) 593-7444
surveys@lsminc.us

WHITAKER 1.410 ACRES

Lying in Virginia Military Surveys 9903-9928 and 12320, McArthur Township, Logan County, Ohio.

Being out of the William Whitaker 61.082 acre tract as deeded and described in Official Record 809, Page 387, Tract One of the Logan County Records of Deeds and being more particularly described as follows:

Commencing on a 1-1/2 inch iron pipe found on the southwest corner of Virginia Military Survey 12320, on the north line of Virginia Military Survey 9903-9928 and on an angle point on the center-line of County Highway 36.

THENCE, with the south line of Virginia Military Survey 12320, the north line of Virginia Military Survey 9903-9928 and the center-line of County Highway 36 (60 feet wide), N 82°-49'-43"E, a distance of 1574.02 feet to a MAG nail set at the TRUE POINT OF BEGINNING, passing a MAG nail set at 397.99 feet.

THENCE, with the south line of Virginia Military Survey 12320, the north line of Virginia Military Survey 9903-9928 and the center-line of County Highway 36, N 82°-49'-43"E, a distance of 50.25 feet to a MAG nail set.

THENCE, with the east line of the Dwight E. Reed 50.32 acre tract (Vol. 404, Pg. 392, First Parcel), N 06°-03'-49"W, a distance of 119.55 feet to a stone found, passing a 5/8 inch iron rod set at 30.00 feet.

THENCE, with a south line of the William L. Whitaker and Elaine M. Whitaker 25.70 acre tract (O.R. 120, Pg. 634, Tract Two), N 83°-30'-53"E, a distance of 336.94 feet to a 5/8 inch iron rod set.

THENCE, with an east line of the William L. Whitaker and Elaine M. Whitaker 37 acre tract (O.R. 120, Pg. 634, Tract One), S 06°-41'-20"E, a distance of 115.50 feet to a 5/8 inch iron rod set on the south line of Virginia Military Survey 12320, the north line of Virginia Military Survey 9903-9928 and the center-line of County Highway 36, passing a 5/8 inch iron rod set at 85.50 feet.

THENCE, with the south line of Virginia Military Survey 12320, the north line of Virginia Military Survey 9903-9928 and the center-line of County Highway 36, S 82°-49'-43"W, a distance of 238.48 feet to a MAG nail set.

THENCE, S 06°-36'-37"E, a distance of 145.42 feet to a 5/8 inch iron rod set, passing a 5/8 inch iron rod set at 30.00 feet.



Lee Surveying and Mapping Co., Inc.

Land Surveys • Topography • Subdivisions • Construction Layout

117 N. Madriver St.
Bellefontaine OH 43311



Phone: (937) 593-7335
Fax: (937) 593-7444
surveys@lsminc.us

THENCE, S 83°-07'-31"W, a distance of 150.01 feet to a 5/8 inch iron rod set.

THENCE, N 06°-36'-37"W, a distance of 144.64 feet to the point of beginning, passing a 5/8 inch iron rod set at 114.64 feet.

Containing 1.410 acres, of which 0.336 acre is within the highway right-of-way. There is 0.911 acre in Virginia Military Survey 12320 and 0.499 acre in Virginia Military Survey 9903-9928.

Property is subject to any and all previous easements and rights-of-way of record.

The basis for bearings is the north line of Virginia Military Survey 9903-9928, being N 82°-49'-43"E, and all other bearings are from angles and distances measured in a field survey by Lee Surveying and Mapping Co., Inc. on April 27, 2010.



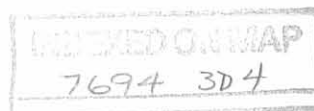
ORIGINAL STAMP IN GREEN

Description prepared by:

A handwritten signature in cursive script that reads 'William K. Bruce'.

William K. Bruce
Professional Surveyor 7437
April 29, 2010

4945410



REC'D 5-4-10 SMJ/ck

Lee Surveying and Mapping Co., Inc.

Land Surveys • Topography • Subdivisions • Construction Layout

117 N. Madriver St.
Bellefontaine OH 43311



Phone: (937) 593-7335
Fax: (937) 593-7444
surveys@lsminc.us

WHITAKER 8.490 ACRES

Lying in Virginia Military Surveys 9903-9928 and 12320, McArthur Township, Logan County, Ohio.

Being out of the William L. Whitaker and Elaine M. Whitaker 37 acre tract and 25.70 acre tract as deeded and described in Official Record 120, Page 634, Tract One and Tract Two of the Logan County Records of Deeds and being more particularly described as follows:

Commencing on a 1-1/2 inch iron pipe found on the southwest corner of Virginia Military Survey 12320, on the north line of Virginia Military Survey 9903-9928 and on an angle point on the center-line of County Highway 36.

THENCE, with the south line of Virginia Military Survey 12320, the north line of Virginia Military Survey 9903-9928 and the center-line of County Highway 36 (60 feet wide), N 82°-49'-43"E, a distance of 1624.27 feet to a MAG nail set, passing MAG nails set at 397.99 feet and 1574.02 feet.

THENCE, with the east line of the Dwight E. Reed 50.32 acre tract (Vol. 404, Pg. 392, First Parcel), N 06°-03'-49"W, a distance of 119.55 feet to a stone found at the TRUE POINT OF BEGINNING, passing a 5/8 inch iron rod set at 30.00 feet.

THENCE, with the east line of the said 50.32 acre tract, N 06°-03'-49"W, a distance of 362.91 feet to a 5/8 inch iron rod set.

THENCE, N 83°-56'-11"E, a distance of 690.29 feet to a 5/8 inch iron rod set.

THENCE, S 03°-18'-29"E, a distance of 740.37 feet to a 5/8 inch iron rod set.

THENCE, S 83°-15'-02"W, a distance of 313.61 feet to a 5/8 inch iron rod set on the center-line of County Highway 36, passing a 5/8 inch iron rod set at 283.61 feet.

THENCE, with the center-line of County Highway 36, N 06°-41'-20"W, a distance of 267.36 feet to a 5/8 inch iron rod set on the south line of Virginia Military Survey 12320, the north line of Virginia Military Survey 9903-9928.

THENCE, with the lines of the William Whitaker 61.082 acre tract (O.R. 809, Pg. 387, Tract One) the following two courses:



Lee Surveying and Mapping Co., Inc.

Land Surveys • Topography • Subdivisions • Construction Layout

117 N. Madriver St.
Bellefontaine OH 43311



Phone: (937) 593-7335
Fax: (937) 593-7444
surveys@lsminc.us

N 06°-41'-20"W, a distance of 115.50 feet to a 5/8 inch iron rod set, passing a 5/8 inch iron rod set at 30.00 feet.

S 83°-30'-53"W, a distance of 336.94 feet to the point of beginning.

Containing 8.490 acres, of which 0.205 acre is within the highway right-of-way. There are 6.507 acres in Virginia Military Survey 12320 and 1.983 acres in Virginia Military Survey 9903-9928.

Property is subject to any and all previous easements and rights-of-way of record.

The basis for bearings is the north line of Virginia Military Survey 9903-9928, being N 82°-49'-43"E, and all other bearings are from angles and distances measured in a field survey by Lee Surveying and Mapping Co., Inc. on April 27, 2010.

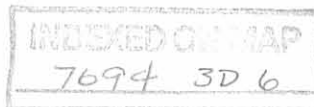


Description prepared by:

A handwritten signature in cursive script that reads 'William K. Bruce'.

William K. Bruce
Professional Surveyor 7437
April 29, 2010

4945410



REC'D 5-6-10 SMJ/OK

Lee Surveying and Mapping Co., Inc.

Land Surveys • Topography • Subdivisions • Construction Layout

117 N. Madriver St.
Bellefontaine OH 43311



Phone: (937) 593-7335
Fax: (937) 593-7444
surveys@lsminc.us

WHITAKER 55.638 ACRES

Lying in Virginia Military Surveys 9903-9928 and 12320, McArthur Township, Logan County, Ohio.

Being out of the William L. Whitaker and Elaine M. Whitaker 37 acre tract and 25.70 acre tract as deeded and described in Official Record 120, Page 634, Tract One and Tract Two of the Logan County Records of Deeds and being more particularly described as follows:

Commencing on a 1-1/2 inch iron pipe found on the southwest corner of Virginia Military Survey 12320, on the north line of Virginia Military Survey 9903-9928 and on an angle point on the center-line of County Highway 36.

THENCE, with the south line of Virginia Military Survey 12320, the north line of Virginia Military Survey 9903-9928 and the center-line of County Highway 36 (60 feet wide), N 82°-49'-43"E, a distance of 1624.27 feet to a MAG nail set, passing MAG nails set at 397.99 feet and 1574.02 feet.

THENCE, with the east line of the Dwight E. Reed 50.32 acre tract (Vol. 404, Pg. 392, First Parcel), N 06°-03'-49"W, a distance of 482.46 feet to a 5/8 inch iron rod set at the TRUE POINT OF BEGINNING, passing a 5/8 inch iron rod set at 30.00 feet and a stone found at 119.55 feet.

THENCE, with the east line of the said 50.32 acre tract, N 06°-03'-49"W, a distance of 230.02 feet to a 5/8 inch iron rod set over top of stone found 2 feet deep.

THENCE, with the south line of the Chad E. Williams 25.87 acre tract (O.R. 373, Pg. 326), N 82°-44'-52"E, a distance of 1686.27 feet to a MAG nail set on the center-line of Ohio Route 117, passing a 5/8 inch iron rod set at 1656.30 feet.

THENCE, with the center-line of Ohio Route 117 (60 feet wide), the following two courses:

S 07°-50'-32"E, a distance of 595.45 feet to a MAG nail set.

S 07°-36'-50"E, a distance of 1296.43 feet to a MAG nail set.

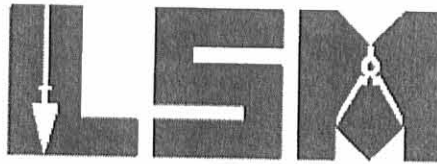
THENCE, with a north line of the Dwight E. Reed 86.51 acre tract (O.R. 91, Pg. 38, Tract II), S 82°-54'-54"W, a distance of 1388.68 feet to a railroad spike found on the center-line of County Highway 36, passing a 5/8 inch iron rods set at 32.56 feet and 1328.92 feet.



Lee Surveying and Mapping Co., Inc.

Land Surveys • Topography • Subdivisions • Construction Layout

117 N. Madriver St.
Bellefontaine OH 43311



Phone: (937) 593-7335
Fax: (937) 593-7444
surveys@lsminc.us

THENCE, with the center-line of County Highway 36, N 06°-41'-20"W, a distance of 907.67 feet to a 5/8 inch iron rod set.

THENCE, N 83°-15'-02"E, a distance of 313.61 feet to a 5/8 inch iron rod set, passing a 5/8 inch iron rod set at 30.00 feet.

THENCE, N 03°-18'-29"W, a distance of 740.37 feet to a 5/8 inch iron rod set.

THENCE, S 83°-56'-11"W, a distance of 690.29 feet to the point of beginning.

Containing 55.638 acres, of which 1.934 acres are within the highway rights-of-way. There are 20.385 acres in Virginia Military Survey 12320 and 35.253 acres in Virginia Military Survey 9903-9928.

Property is subject to any and all previous easements and rights-of-way of record.

The basis for bearings is the north line of Virginia Military Survey 9903-9928, being N 82°-49'-43"E, and all other bearings are from angles and distances measured in a field survey by Lee Surveying and Mapping Co., Inc. on April 27, 2010.

Description prepared by:

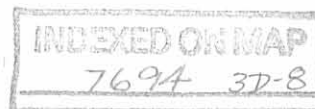
A handwritten signature in cursive script that reads "William K. Bruce".

William K. Bruce
Professional Surveyor 7437
April 29, 2010

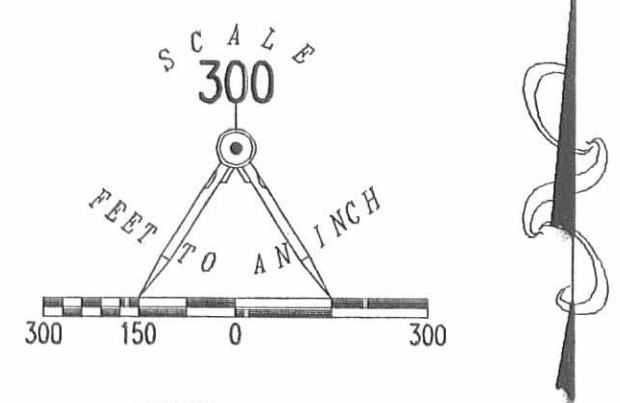
4945410



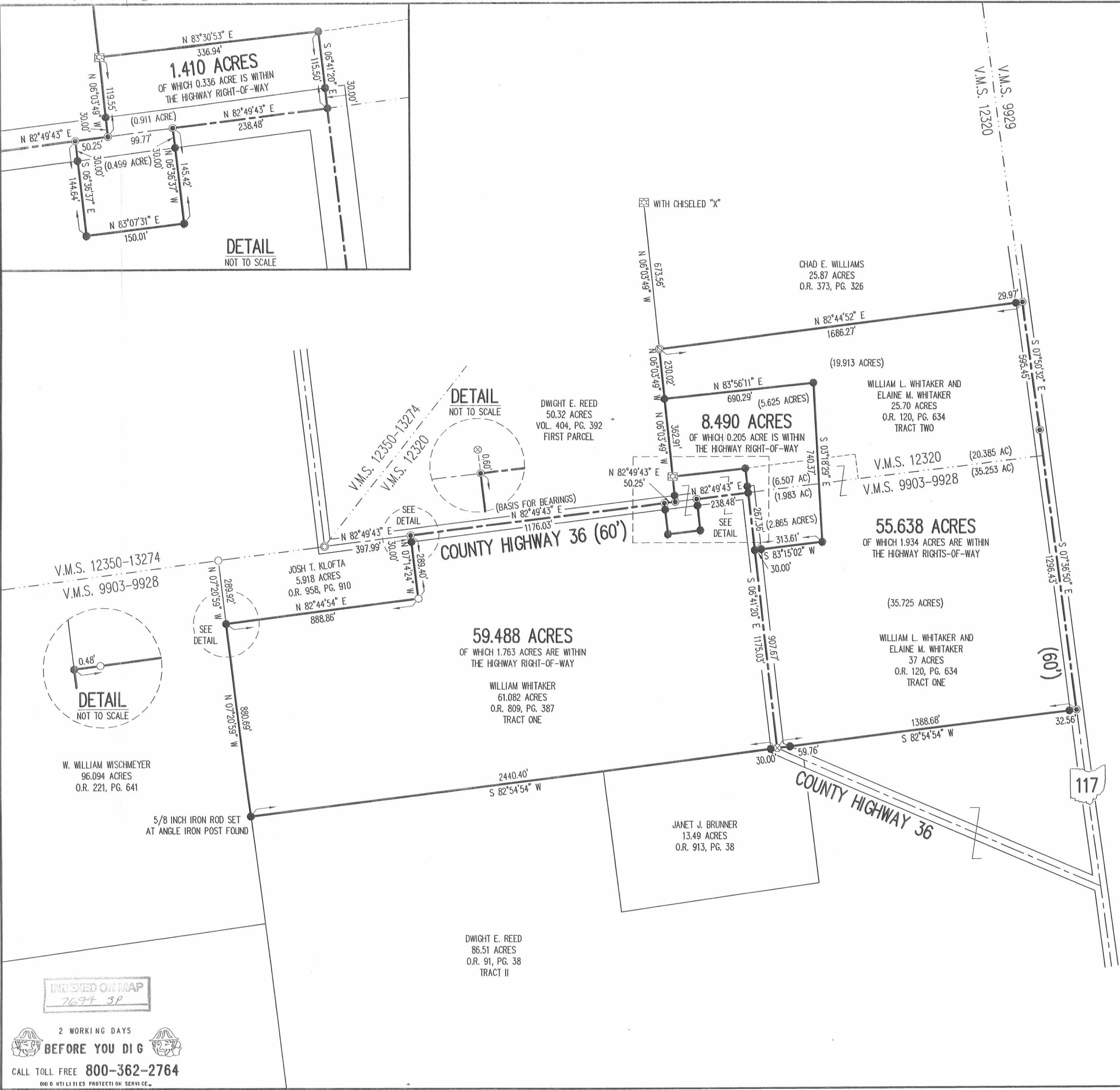
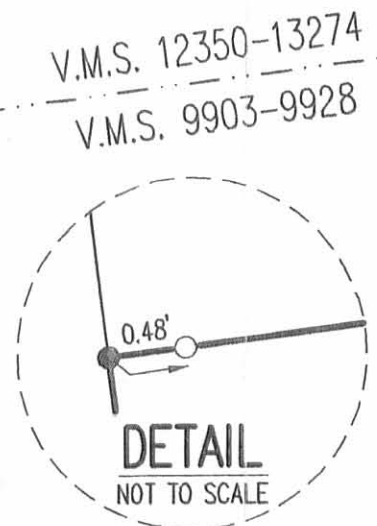
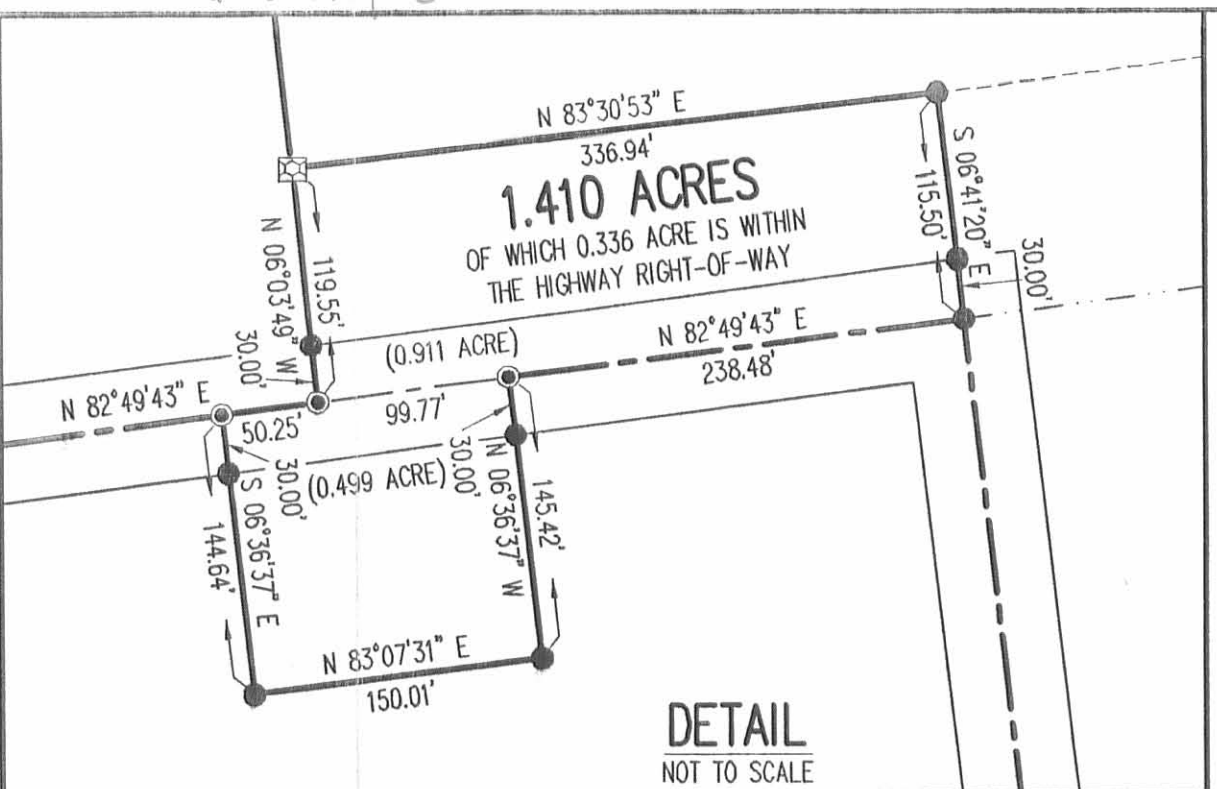
ORIGINAL STAMP IN GREEN



REVID 5-16-10 SMM/ok



- LEGEND:
- ⊙ 1-1/2 INCH IRON PIPE FOUND
 - ⊗ MAG NAIL FOUND
 - MAG NAIL SET
 - ⊗ RAILROAD SPIKE FOUND
 - ⊕ CONCRETE R/W MONUMENT FOUND
 - ⊠ STONE FOUND
 - ⊙ 5/8 INCH IRON ROD SET OVER TOP OF STONE FOUND 2 FEET DEEP
 - 5/8 INCH IRON ROD FOUND
 - 5/8 INCH IRON ROD SET WITH PLASTIC I.D. CAP STAMPED "LSM 7437"



SURVEY OF TWO TRACTS OUT OF THE WILLIAM WHITAKER 61.082 ACRE TRACT OFFICIAL RECORD 809, PAGE 387 TRACT ONE AND

SURVEY OF TWO TRACTS OUT OF THE WILLIAM L. WHITAKER AND ELAINE M. WHITAKER 37 ACRE TRACT AND 25.70 ACRE TRACT OFFICIAL RECORD 120, PAGE 634 TRACT ONE AND TRACT TWO VIRGINIA MILITARY SURVEYS 9903-9928 AND 12320 McARTHUR TOWNSHIP LOGAN COUNTY, OHIO

SURVEYED BY:
William K. Bruce
WILLIAM K. BRUCE
PROFESSIONAL SURVEYOR 7437
APRIL 27, 2010



COPYRIGHT 2010 BY:
LEE SURVEYING & MAPPING CO., INC.
117 North Madriver Street
BELLEFONTAINE, OHIO 43311
(937) 593-7335
surveys@lsminc.us
KSS D0410 4945410 L-4945-2

INDEXED ON MAP
7694 3P

2 WORKING DAYS
BEFORE YOU DIG
CALL TOLL FREE **800-362-2764**
OHIO UTILITIES PROTECTION SERVICE