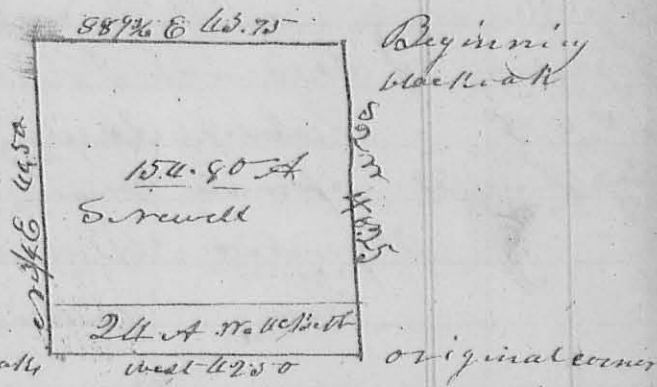


169 15 S. 140 E 30 L. Black oak 15 S. 168 N 56 L. on the north line of the sec. Thence with said line S 89 1/2 E. 43.75 ch. to the beginning containing 174.80 acres —

Then cut off the south side of said gr. for million.

• McBeth 24 acres by a line as follows — begin-
-ning N 1/4 E. 5.54 chains
from the S.W. corner thence



at a N. 0. 18 S. 133 N
33 L. + w. 0 22 S. 650 N 2 oak oak

35 L — Thence East 40 chains to a N. 0. 18 S. 117 N 32 L —

Surveyed April 29th 1833
George F. Rock } 66.
Handy Powell }

D. Hopkins Deputy Surveyor
I certify the foregoing to a correct
as returned to my office by D. Hop-
kins Deputy Surveyor
James W. Harmon
C. L. C.

Madison
ex 5 sep

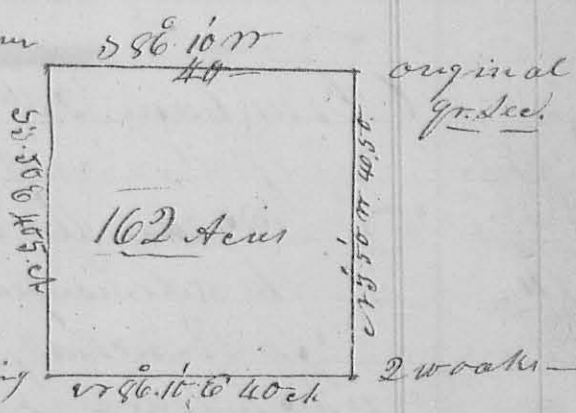
April 30th 1833

Surveyor 209
for James Harmon ex 11 gr. 1837 of

8295

R. G. & Lewis town Reserve — Beginning at the ori-
ginal gr. corner on the west boundary — Thence N 86. 11' E.
40 chains to a white oak 18 S. 136 N 12 L. N. 0. 9 S. 511 E.

5 Links thence N 3 1/2 S. 11
40.50 ch. to original gr. sec
corner on the north line
of the sec. — Thence S 86 10' N



40 ch. to N.W. corner of sec.
Thence with its west line
S 3 1/2 E 40.50 ch. to the
beginning, containing
162 acres

D. Hopkins Deputy Surveyor
I certify the foregoing to a correct copy
of Surveyor's returned to my office
by D. Hopkins — James W. Harmon
C. L. C.

Martin Luger } 66
James Luger }
April 30th 1833