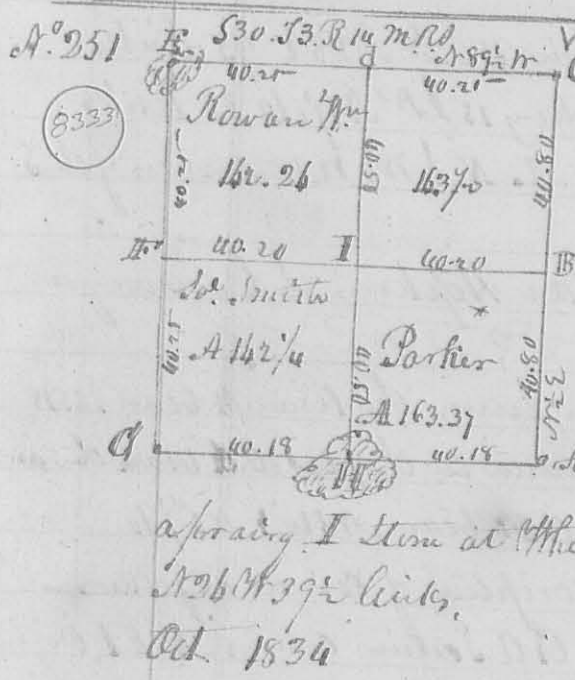


Oct. 1835

Divided the adjacent lot as follows. Beginning N 35° 50' W 17.70 from the N.W. corner thereof at a Hickory 10 1/2 S 86° W 33 links, Water Beech 1/2 N 32° E 33. then N 86° 10' E 26 chains to a Beech 24 1/2 N 75° E 2 1/2 links and Beech 18 1/2 S 81° W 28

San Hopkins, L. Sawyer or

N<sup>o</sup> 250 Surveyed Oct 1835 the South portion of the N.E. q<sup>r</sup>. of tract L. 18 1/2 S 89° E. Beginning at Irwin's S. E. corner, then N 35° 50' W 20.25 to W. Oak 18 1/2 N 45° W 27 links, and same 18 1/2 S 89° E 49 links, then N 86° 10' E 32 chains to a Sugar 15 1/2 S 79° E 13 B. Hickory, 12 1/2 S 13° W 94 L. then S 94° E 21.50 to an Oak 12 1/2 S 84° E 27 links, W. Oak 12 1/2 S 54° E 4 L. then S 86° 10' W 39.50 to the beginning. Containing 72 1/2 acres  
Oct. 1834  
San Hopkins, Sawyer or L.



N<sup>o</sup> 251 The lines of this survey run at 90° E from the original course, which was due north - distance as marked on the lines. Description of corners. B. E. A. Beginning of this survey. S. E. corner of the section B. Bur. Oak 18 In. dr. N 37° 125 L. and same 20 N 182 130 L. C. Sect. corner. d. Bur oak 12 1/2 S 73° E 89 Hickory 10 S 73° W 16 Links. E. Stake in a sprang - F. orig. q<sup>r</sup>. corner. C. Sect. corner. H. Stem in a sprang. I. Stem at White oak 12 1/2 S 72° W 80 Links. Bur. Oak 9 1/2 S 26° W 39 1/2 links.  
Oct. 1834  
San Hopkins, Sawyer or L.

N<sup>o</sup> 252 For Prichard & Bunker. Exchange of land. Surveyed for Prichard, deeded to Bunker. Beginning at a stake in the line between the S. E. & N. E. q<sup>r</sup>s. of S. 23. R. 12 N. S. then S 89° W 20 chains to a White Oak 22 1/2 N 57° 55' and same 12 1/2 S 88° E 92 L. then S 82° E 14.77 to the creek area then with the meanders of and up the creek to the beginning. Containing 8.75 acres. Then for Bunker, deeded to Prichard beginning at the S.W. corner of the N. E. q<sup>r</sup>. of said tract in then N 75° E 7.50 to a stem then N 89° E 9 chains to the road, then N 4° E 4.75 chains. S 82° E 5.50 ch. to White Oak 22 1/2 W N 57° 55' L. do. 12 1/2 S 88° E 92 links in the line between the N. E. & S. E. q<sup>r</sup>s. then S 89° W 15 chains to the beginning. 8.75 acres  
Oct. 1834  
San Hopkins, Sawyer or L.