

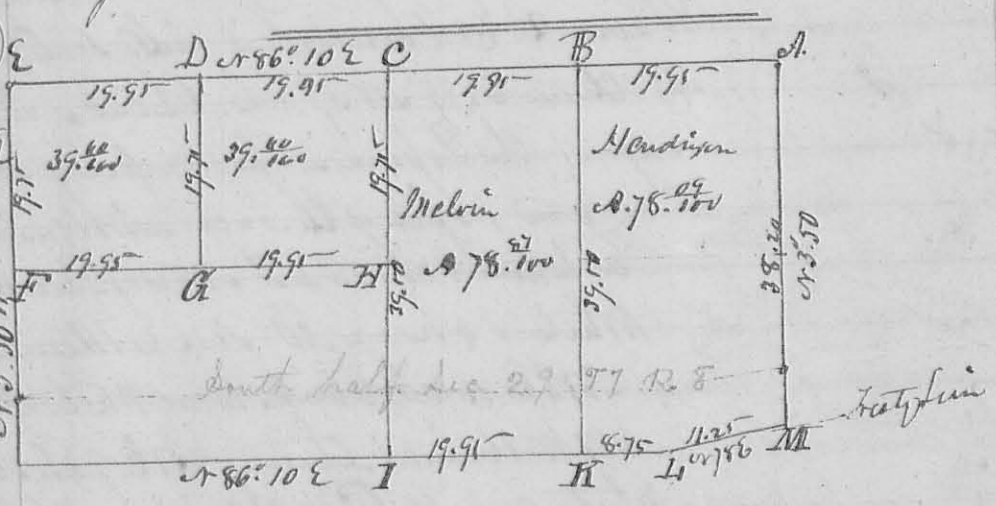
280
N^o 357
8397

Survey for the Mulkem on part of the S. E. quarter of
S28. T3. R14M. N. as follows. Beginning at a stone in
the N. line of S31. Gr. S. Corner, thence North 30 ch 94 to a
stone, thence N 89 E 25 ch 94 to a stone, thence South
30 ch 80 to a stone, thence S 89 W 25 ch 94 to the beginning
Containing 10 acres.
D. Hopkins Sur. S. E. 0

N^o 358
8398

Surveyed June 19. 1837. for the M^r May. part of
Military Survey N^o 9905 as follows. Beginning at an Elm
and Sugar corner to Peter Stamaty thence
N 12 W 19 poles, ending a Road at 92 poles to the South
line of Survey N^o 9930. at a Hickory and Wild Cherry bush
thence with said line N 74 E 86 poles to a Sugar & Hickory
Corner to Horner Patterson's Lease, thence S 12 E 140 poles, ending
a Road at 88 poles to a large Elm on the bank of a new
Corner to Saml. C. Hull, thence with the Meander of said
Creek N 27 W 16 poles, S 67 W 20 poles, S 9 E 13 poles, S 34 W 12 poles,
S 57 W 12 poles, S 15 W 11 poles, S 27 E 8 poles, S 70 W 11 poles, S 40 W 8 poles,
S 58 W 8 poles, and S 10 W 10 poles to the beginning Containing 81²/₁₀₀
Acres.
J. Ferguson. R. Patterson ch. D. Hopkins Sur. S. E. 0.

N^o 359 (8399)
S. 29¹/₂ S. R. 50
Lewis & Ann
Reserve
Surveyed
July 26.
1837.



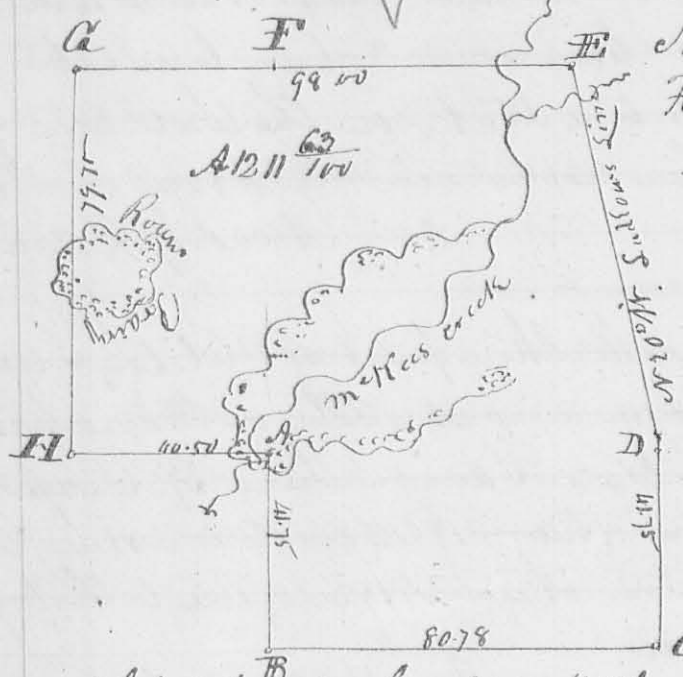
Corners. A. Gr. S. Corner between S28. 29
B. Ash 12 S. South 35. Ash. 6 S. N. 30 W 12
C. Ash 10. S. S. 30 W 36. Elm 15 S. N. 15 E 13
D. Elm 15. N. 14 E 26. Hickory 12. S. 22 E 37
E quarter Section Corner between S29. 30.

267

March 1837

N^o 372

8406



This plot represents the North half of S 25. T 4 R 16 W R 2. Front Lot 26. & East half of S 32. Same town and range. run at true Meridian - Present variation 40° E. " Sudden line 1° E. making its present bearing N 19° W.

Description of Corners.

- A. A. Stone in a Porcupine
- B. White Oak North 48 Sinks. Hickory 12 L.D. S 41 N 3.4 Sinks
- C. Hickory & L.D. S 46 W 15 Sinks. and Hickory 12 L.D. N 57 E 48 Sinks
- D. Stone N.E. Corner of S 25. the original bearing tree down
- E. N.E. Corner of S 26. a White Oak S 46 N 22 Sinks. the other tree down
- F. N.W. Corner of S 26. A N.E. Corner to Bark heart of A.C. Stone
- H. White Oak 18 L.D. N 12 W 31 Sinks. and White Oak S 20 E 34 Sinks

John W. Colvin

John B. Miller } ch. Cor.

Dea. A. of Kim Co. Va. J. C. A

N^o 373

8398

Various parts of Metitam Survey N^o 998. W. for Gray. Beginning at Sugar & Buck Exp. (into down Str Corn) to a Stake then S 12 E 114 poles to a buck marked RR RR then with the meander of Johnsons Mill Race S 85 W 22 2/10 poles to a stake. then S 14 W 11 6/10 poles to a stump then S 43 N 36 poles to a sugar. then S 53 3/4 W 10. 3/10 poles to a White Walnut. then S 75 W 19 poles to a Buck Exp. then N 82 W 13 6/10 poles to a Buck Exp. then N 68 W 7 6/10 poles to a stake N 68 W 22 1/2 poles from a black Walnut then N 12 W 139 5/10 poles. Crops Creek at 2 poles to the beginning 80 acres. more or less. (no calculation has made also for J. S. Linsen. Beginning at the Buck marked RR as above

them with said Johnsons Mile and with it
 Meander as before, and to the State 21 links from the
 black Walnut. thence S 12 E 20 5/10 poles to a stake 53 1/2
 links from 2 chemp from one post thence N 78 E 103 5/10
 poles to a stake. Comes to South Lane. thence N 12 W 46 poles
 crossing a Creek at 46 poles to the beginning. computed to
 contain 20 acres, more or less. and also for said Kind
 man. part of said Survey 12, beginning at a Beck
 and Lynn N. E. Comes to said 25 acres lot. thence S 12 E
 29 poles to a stake. thence S 78 W 54 poles to a stake in the center
 of a 2 1/2 rod road thence with said Road N 37 E 57 poles to a
 stake. in the N line of Survey N. 9905 of which this is a part
 thence with said line N 77 1/2 E 9 poles to the beginning
 containing 7 acres 66 hun and 1/2.

March 17. 1837.

L. Hopkins Co. and Co.

N. 374

8407

April 4. 1837. In pursuance to previous notice to the
 parties concerned. I proceeded under the Statute to plant Corner
 Stone at the S. E. and S. W. Corner of Military Survey N. 5245
 being the N. E. of Survey N. 4990 for 400 acres. in the name
 of White. as follows. went to the N. W. Corner of Survey
 N. 5245. in Suddlers line. the original tree, two Bir. Oaks, one
 cut down. stump about 18 inches high. Planted a stone near a
 trunk. Present Joshua Robb, Wm Carr marker, John Wilson
 John Han Ch Camien, James Carr. thence run S 19 E with
 Suddlers line the original call, for the Survey 195 poles, crossed a
 small drain at 2 poles, and one at 5 poles. Detroit Road at 98 poles.
 Sandusky Road at 140 poles. a small run at 162 poles to a Hickory
 6 inches dia. S 61 E 21 1/2 links distant from a stone which I
 planted here. present the same individuals as above - then
 went to the N. W. Corner of Thomas Northingtons Survey
 N. 4299 at a stone formerly planted under Statute. thence run
 South 148 poles. Crossed a small branch at 60 poles and one at 130
 poles to some small hickies marks in a military corner. found
 some pieces of a Beck tree and appearance of a Beck,
 having formerly stood at this point. agreeing with the
 original call. (Nothing certain however, can be known

oak & hickory: thence east 45 poles to a stone 345
in the east line of the whole tract: thence with said line
south 45 poles to the beginning

W. Beckman
Robt. Hamilton

John Mechem
County Surveyor Logan County

Survey 3
N^o 511 3 ✓ 4th Mo. April 14th 1843
849
Surveyed for Jacob Grieb Attorney for James Bixby
a lot of ground in Zanesfield: Beg. at a Stone N.W. cor. to a
lot conveyed by In^o Pinn & wife to Jacob Grieb: thence with the north
line of said lot S 74° E 7 ⁵/₁₆ poles to a Stone: thence N 45° E
4 poles to a Stone: thence N 78° W 9 poles and 19 links to a Stone;
thence S 69° W 2 poles and 23 ¹/₂ links to the beginning
Containing 30 square poles. Ch^o. Mechem Sur Logan Co

Survey 3
N^o 512 3 ✓ 4th Mo. April 21st 1843
8398
Surveyed for William Watson
120 ¹/₂ Acres of land part of Survey N^o 9905
on the waters of Cherokee Run: Beginning
at an Ash and Ironwood on the bank of the creek
(both down): thence S 102° E 136 poles to 5 beech (all
down): thence N 77° E 111 poles to a Black
walnut and beech (the beech is down): thence N 102°
25.4 poles to 4 sug. on the bank of the creek
(3 down): thence with the center of the creek where
distance 184.2 poles to the beginning
Adam Hanes 3 Ch^o. Mechem
Moses Workman 3 Surveyor Logan Co

Survey 3
N^o 513 3 ✓ 6th Mo. June 30th 1843
8438
Surveyed for Cicin Thomas part of Survey
N^o 4570 as follows: Beginning at a Sugar tree
and beech southwesterly corner to Survey: thence with
the original west line thereof S 19° E 456 ¹/₁₆ poles to a
sugar stump corner to William Green's land: thence N 56°
28 ¹/₁₆ poles crossing a branch at 24 another at 36 another
at 117 & another at 126 poles to a Stake in the located
line of the road leading from Middlebury to Pollington's