

3504

passing Robinson SW Corner at 85 1/2 p. (2 ac. & 20 p.)
to a stem in the N line of the Survey: then S 87 1/2 W 160 p. to
the beginning. Containing 196 ⁹⁶ ac.

Young
Elliott

and part of same Survey. Beginning as at More, Elliott's.
Lot. then N 87 1/2 E 80 p. to a stake from which a hedge
12 L.D. bears S 34 W 50 Links: then South 100 p. to a stem
North from a Red Sugar about 100 p. then S 87 1/2 W
80 p. to a stem Blue & Ironwood, in the West line of
Miss. Elliott. then N 1/2 E 80 p. ending run to the
beginning. Containing 20 ac. And for Isaac Johnson.

Beginning at N E Corner of Survey N. 5091. Stem. Gum
hickory & Ash. then S 87 1/2 W 110 p. to a stem Ash & Hickory -
then North 230 p. ending Co. Road at 100 p. to a stake
Mide Creek at 148 p. then East 110 p. to a stem and
Pigeon Oak in the East line of the Survey. then S 87 1/2 W 220
p. ending Mide Creek to the beginning. Containing
157 ac. _{08 / 100}

D. Hoffman Co. Sav. L. C.

N. 4574

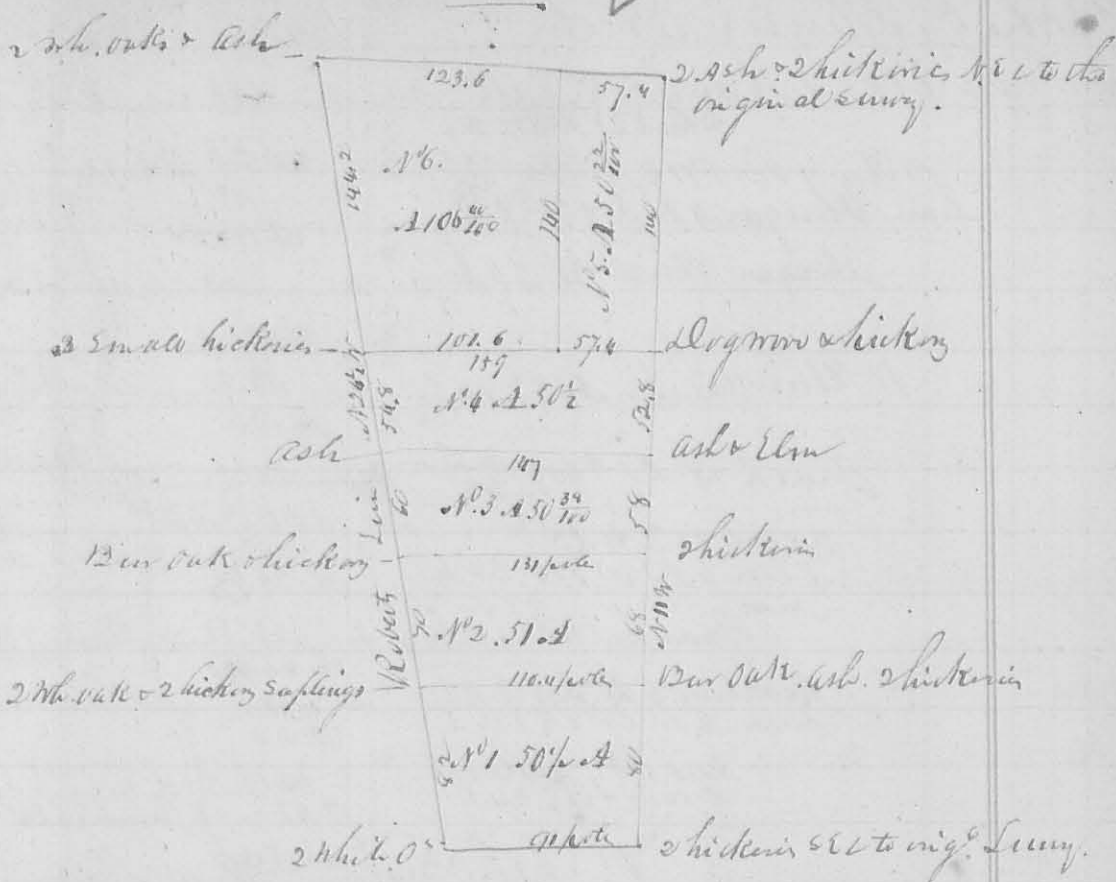
Surveyed June 8. 1839 for John Wheeler the SW quarter of S
11. T 3. R 14. N. 12. Beginning at a stem at E W Corner of
the section: then S 88 W 40.25 ch. to a stem, a white oak
20 L.D. S 6 E 57 Links: then N 1 E 40.50 ch. creek at 36.50
to a stem. Bur Oak 20 L.D. S 39 W 67 Links: Hickory 12 L.D.
N 44 W 63 Links: then N 89 W 40.25 chain, ending a run
at 17.60 ch. to a stem, a white oak 10 L.D. S 77 W 4 Links -
white oak 16 L.D. S 5 E 26 Links: then S 1 W 40 chain to
the beginning. Containing 162 ac.

D. Hoffman Co. Sav. L. C.

Elliott's part of

Surveyed July 24. 1839 for Thomas Armstrong part
of the N W quarter of S 4. T 3. R 14. N. 12. as follows. Beginning
at a stem marked + N E Corner of same quarter. 46.11 chain
from either section corner. then South 20 chains to a Hickory
18 L.D. 20: S 12 W 19 Links: a dogwood & L.D. S 65 W 12 links
then N 89.30 W 12.50 chain to a Bur Oak 22 L.D. S 21 W 8
links: Red Oak 10 L.D. N 62 E 49 Links: then North 200.

8458



Survey Aug 07. 1839 for Henry Shatt.
 Joseph Carpenter }
 Reuben Retchum } the carriers
 Dan Hopkins Co Surv & C^o

8457

460 Survey Sept 5. 1839 for A. Long part of a quantity of 11. to R 14 miles beginning at a white oak 20 p. 547 E 28 links, the other corner is done; then N 77° W 20 chain 50 links to a white oak 18 1/2° S 65 W 6 links - then N 22° 10' 30" E 37 links - then South 17.07 to a Red Oak 22 S 30 E 17 links - then N 15° 10' N 25 W 11 - then East 20 ch. 50 links to a hickory 2 S. D N 87 W 12. Jack Oak 2 S. D. N 87 W 12 1/2 links. East 25 links. then South 17. chain 67 links; to the beginning. Containing 35 acres - Dan Hopkins S. & C^o

8460

N^o 461 Sept 12th 1839 for Archibald Hopkins part of Military Survey 4492 a, follow. Beginning at a stone S 20 E 66 poles from said Hopkins N. E. corner to 100 acres. then S 19 E 77.6 to a stone. then N 71 E 102 poles to a stone - then N 77 E 24 links; N 19 W 76.4 poles to a stone - then S 72 1/4 W 102.4 poles to the beginning. Containing 49 2/3 acres. Dan Hopkins S. & C^o