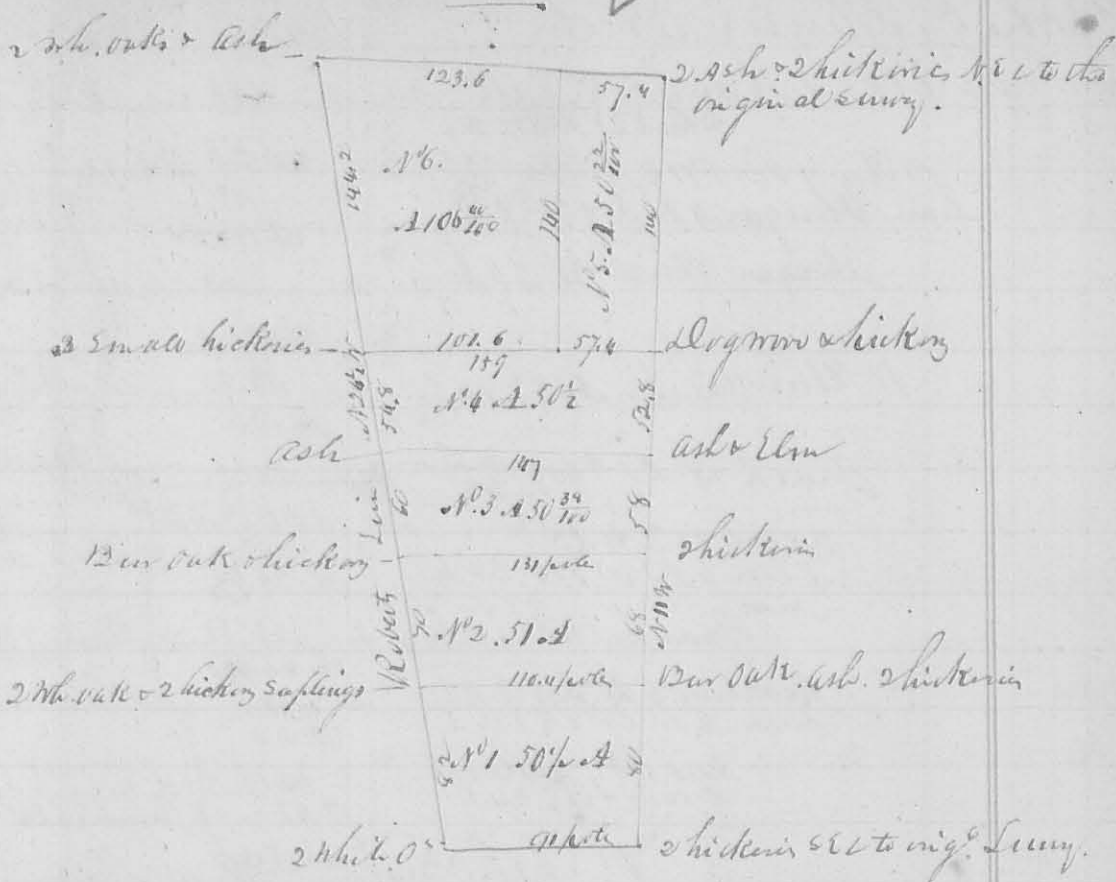


8458



Survey Aug 07. 1839 for Henry Shatt.
 Capt. Carpenter }
 Reuben Retchum } the carriers
 Dan Hopkins Co Surv & Co.

8457

460 Survey Sept 5. 1839 for A. Long part of a quantity of 11. to R 14 miles beginning at a white oak 20 p. 547 E 28 links, the other corner is down; then N 77° W 20 chain 50 links to a white oak 18 1/2° S 65 W 6 links - then 22 1/2° S 82 W 37 links - then south 17.07 to a Red Oak 22 53° E 17 links - then Red 15 1/2° N 2 5/8 W 11 - then East 20 ch. 50 links to a hickory 2 5/8° N 87 W 12. back Oak 2 1/2° N 87 W 12 1/2 links - East 25 links - then back 1 p. chain 67 links; to the beginning. Containing 35 acres - Dan Hopkins S. & Co.

8460

N 461 Sept 12th 1839 for Archibald Hopkins part of Military Survey 4492 a, follow. Beginning at a stone 520 66 pole from said Hopkins N. E. corner to 100 acres - then S 19° E 77.6 to a stone, then N 71° E 102 pole to a stone - then N 77° E 2 1/2 links; N 19° W 76.4 pole to a stone - then S 72 1/4° W 102.4 pole to the beginning. Containing 49 2/3 acres. Dan Hopkins S. & Co.