

Survey of Conrail Property
McArthur Township
Logan County, Ohio
V.M.S. 9881
March 1993

The following description describes a parcel of real estate owned by Consolidated Rail Corporation (Conrail) formerly the Cincinnati, Sandusky, and Cleveland Railroad Company. Said real estate is located in McArthur Township, Logan County, Ohio and is more particularly described as follows:

Being in Virginia Military Survey No. 9881, and beginning at the intersection of Logan County Road No. 130 and McArthur Township Road No. 56.

Thence, with the centerline of McArthur Township Road No. 56, S. 64° - 46' - 00" W., 1101.75 feet, to a railroad spike set, passing a 5/8 inch diameter iron found at 31.96 feet, (Road Records - Logan County Engineer's Office). Said railroad spike set being the N.W. corner of a 4.14 acre tract presently in the name of Ronald C. Justice, etux, (parcel no. 23-062-00-00-034; D.B. 352, pg. 553).

Thence, with the West Line of Justice's 4.14 acre tract, S. 11° - 02' - 36" E., 30.94 feet to a 5/8 inch diameter capped iron set on the South right-of-way of McArthur Township Road No. 56. Said capped iron being the true point of beginning for this description.

Thence, continuing with Justice's West line, S. 11° - 02' - 36" E., 3295.05 feet to a 5/8 inch diameter capped iron set in the driveway of Dwight E. Reed's 186.36 acre tract (parcel no. 23-062-00-00-044; O.R. 42, pg. 566). The above described line being the West line of the following parcels:

23-062-00-00-035	RANDALL L. MIDDGAUGH, etux	17.27 ac.	O.R. 22, pg. 72
23-062-00-00-036	RANDALL L. MIDDGAUGH, etux	10.00 ac.	O.R. 100, pg. 338
23-062-00-00-037	MERLIN R. HOFFER, SR., etal	12.08 ac.	O.R. 30, pg. 151
23-062-00-00-038	BARBARA J. McDONALD	10.50 ac.	O.R. 197, pg. 605
23-062-00-00-039	JOHN D. CHARLES, etux	4.08 ac.	D.B. 398, pg. 754
23-062-00-00-040	CRAIG A. POLHAMUS, etal	9.15 ac.	O.R. 120, pg. 927
23-062-00-00-041	ROBERT M. BAZZLE, etux	5.62 ac.	D.B. 348, pg. 630

Thence, S. 78° - 57' - 24" W., 20.00 feet to a 5/8 inch diameter capped iron set in the driveway of Dwight E. Reed's 186.36 acre tract.

Thence, with the West line of Carter - Jones Lumber Company's 15.08 acre tract (parcel no. 23-062-00-00-042; O.R. 46, pg. 948) and the Logan County Commissioner's 1.90 acre tract (parcel no. 23-062-00-00-043; D.B. 355, pg. 408 and 410), S. 11° - 02' - 36" E., 957.15 feet to a 5/8 inch diameter capped iron set on the Greenville Treaty Line.

Thence, with the Greenville Treaty Line and the South line of McArthur Township, S. 83° - 24' - 42" W., 100.30 feet to a 5/8 inch diameter capped iron set.

Thence, with the East line of Dwight E. Reed's 186.36 acre tract and Chester A. Zimmerman, etal's 192.42 acre tract (parcel no. 23-062-00-00-045; O.R. 35, pg. 368), N. 11° - 02' - 36" W., 4214.06 feet to a 5/8 inch diameter capped iron set on the South right-of-way line of McArthur Township Road No. 56.

Thence with the South right-of-way line of McArthur Township Road No. 56, N. 64° - 46' - 00" E., 123.78 feet to the point of beginning.

The above described tract contains 11.224 acres, more or less.

INDEXED ON MAP
8800 1D-1


The above described tract is the same tract previously transferred through the following deeds:

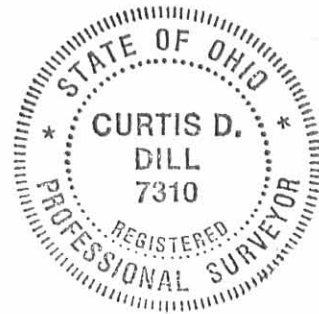
D.B. 85, pg. 204
D.B. 132, pg. 311
D.B. 132, pg. 327 & 328
D.B. 132, pg. 343 & 344
D.B. 132, pg. 399 & 400
D.B. 398, pg. 395 - 400

Basis of bearing being the centerline of McArthur Township Road No. 56 (N. 64° - 46' - 00" E.) as shown in Field Book No. 653, page 30.

Caps placed on irons set are stamped "Logan County Engineer".

The above description represents an actual field survey performed by the Logan County Engineer's Office in March of 1993. All distances and angles were measured in the field.


Curtis D. Dill, P.S.
Logan County Engineer's Office
Registered Survey No. 7310
Bellefontaine, Ohio 43311

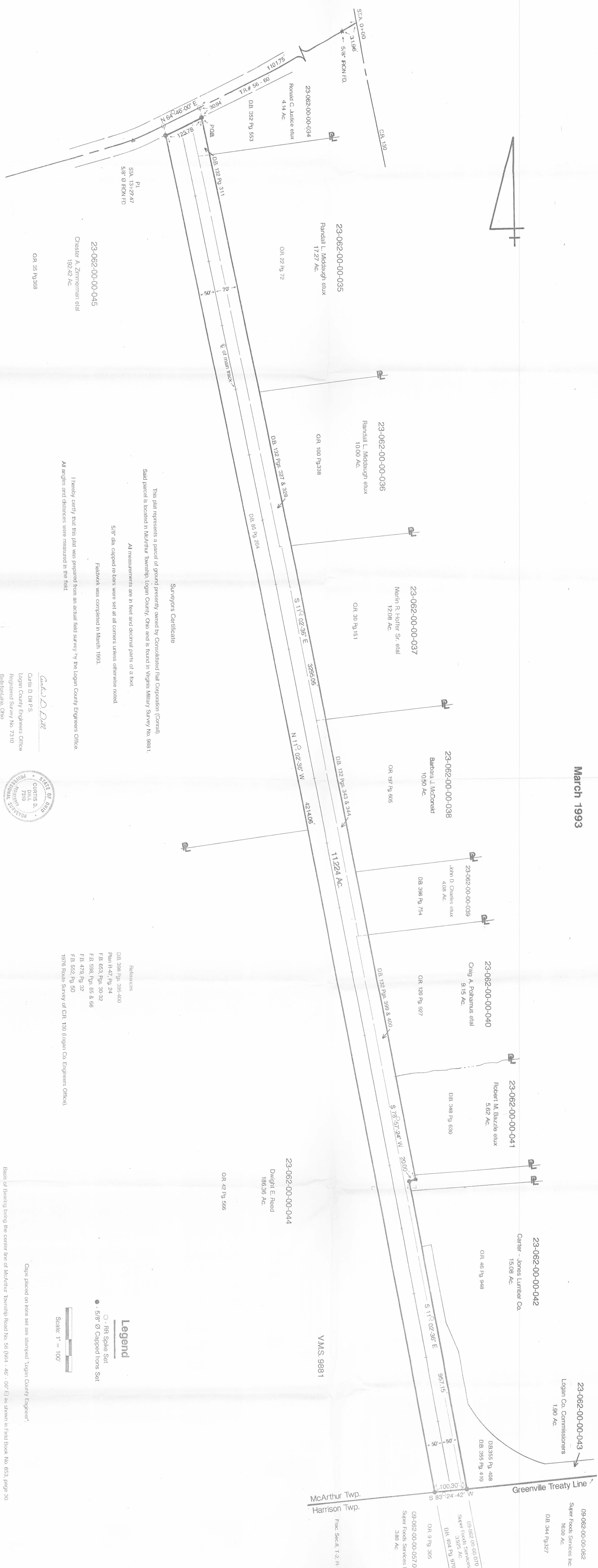


ON MAP
8800 1D-2

SURVEY OF CONRAIL PROPERTY

McArthur Township
Logan County, Ohio
V.M.S. 9881

March 1993



Surveyor's Certificate

This plat represents a portion of ground presently owned by Consolidated Rail Corporation (Conrail). Said parcel is located in McArthur Township, Logan County, Ohio and is found in Virginia Military Survey No. 9881.

All measurements are in feet and decimal parts of a foot.

5/8\" caped re-bars were set at all corners unless otherwise noted.

Fieldwork was completed in March 1993.

I hereby certify that this plat was prepared from an actual field survey by the Logan County Engineers Office. All angles and distances were measured in the field.

23-062-00-00-045
Chester A. Zimmerman et al
192.42 Ac.

OR 35 Pg 368

23-062-00-00-035
Randall L. Middaugh et ux
17.27 Ac.

OR 22 Pg 72

23-062-00-00-036
Randall L. Middaugh et ux
10.00 Ac.

OR 100 Pg 338

23-062-00-00-037
Merlin R. Hofter Sr. et al
12.08 Ac.

OR 30 Pg 151

23-062-00-00-038
Barbara J. McDonald
10.50 Ac.

OR 197 Pg 605

23-062-00-00-039
John D. Charles et ux
4.08 Ac.

DB 398 Pg 754

23-062-00-00-040
Craig A. Polhamus et al
9.15 Ac.

OR 120 Pg 827

23-062-00-00-041
Robert M. Bazzle et ux
5.62 Ac.

DB 348 Pg 630

23-062-00-00-042
Carter - Jones Lumber Co.
15.08 Ac.

OR 46 Pg 948

23-062-00-00-043
Logan Co. Commissioners
1.90 Ac.

DB 355 Pg 410

09-062-00-00-062
Super Foods Services Inc.
16.00 Ac.

DB 344 Pg 327

09-062-00-00-057.001
Super Foods Services Inc.
3.80 Ac.

OR 9 Pg 305

Curtis D. Dill
Logan County Engineers Office
Registered Survey No. 7310
Bellefontaine, Ohio



- References:
- DB 398 Pgs. 395-400
 - Plan R-47, Pg 24
 - FB 653, Pgs. 30-32
 - FB 598, Pgs. 65 & 66
 - FB 479, Pg 32
 - FB 552, Pg 50
 - 1976 Route Survey of CR 130 (Logan Co. Engineers Office).

Legend

- - RR Spike Set
- - 5/8\" Caped Irons Set



Scale: 1\" = 100'

Caps placed on iron sets are stamped 'Logan County Engineer'.

Basis of Bearing being the center line of McArthur Township Road No. 56 (N 64° 48' 00\" E) as shown in Field Book No. 653, page 30.

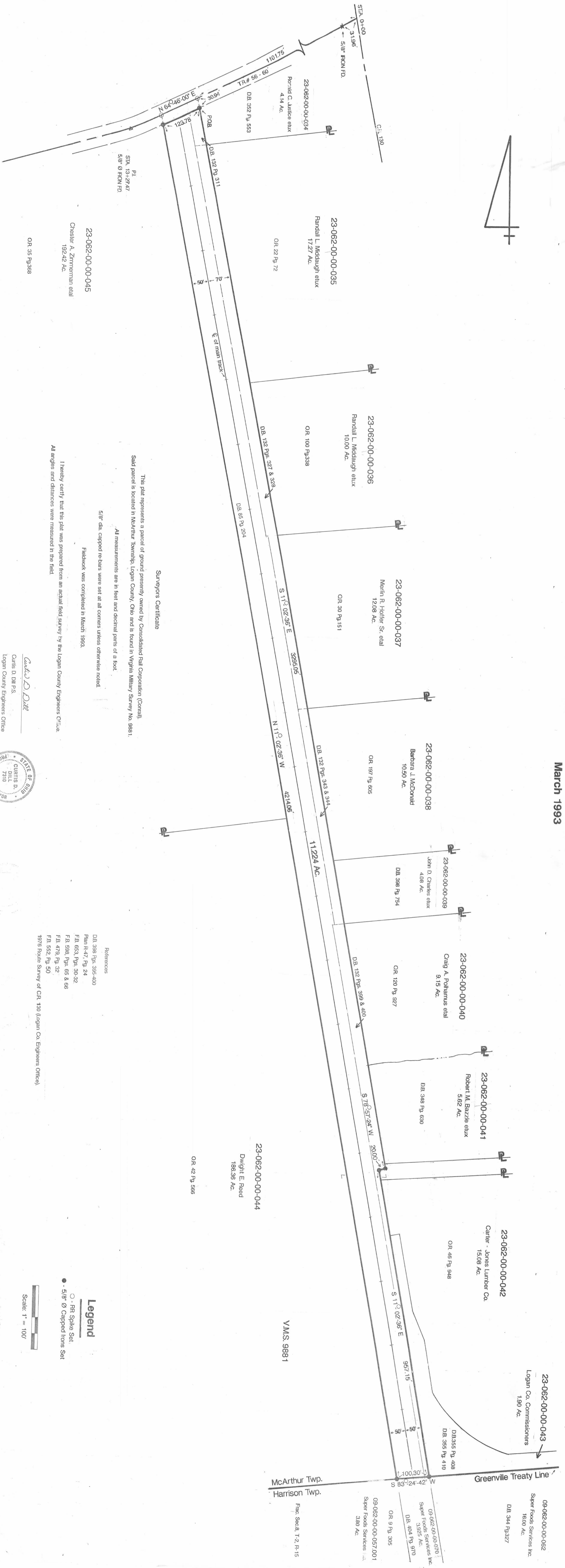
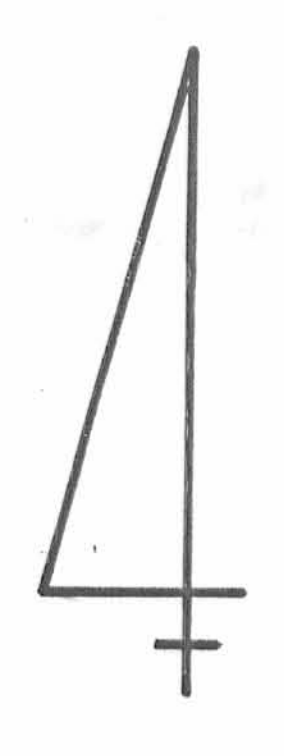


SURVEY OF CONRAIL PROPERTY

McArthur Township Logan County, Ohio

V.M.S. 9881

March 1993



Surveyor's Certificate

This plat represents a parcel of ground presently owned by Consolidated Rail Corporation (Conrail). Said parcel is located in McArthur Township, Logan County, Ohio and is found in Virginia Military Survey No. 9881.

All measurements are in feet and decimal parts of a foot.

5/8" dia. capped re-bars were set at all corners unless otherwise noted.

Fieldwork was completed in March 1993.

I hereby certify that this plat was prepared from an actual field survey by the Logan County Engineers Office.

All angles and distances were measured in the field.

23-062-00-00-045
Chester A. Zimmerman et al
192.42 Ac.

OR 35 Pg 368

- References**
- DB 398 Pgs. 395-400
 - Plan R-47, Pg. 24
 - FB 653, Pgs. 30-32
 - FB 598, Pgs. 65 & 66
 - FB 479, Pg. 32
 - FB 552, Pg. 50
- 1876 Route Survey of CR 130 (Logan Co. Engineers Office)

Curtis D. Dill

Curtis D. Dill P.S.
Logan County Engineers Office
Registered Survey No. 7310
Bellevue, Ohio



Legend

- - RR Spike Set
- - 5/8" Ø Capped Irons Set

Scale: 1" = 100'

Basis of bearing being the center line of McArthur Township Road No. 56 (N64° - 46' - 00" E) as shown in Field Book No. 653, page 30.

Caps placed on irons set are stamped "Logan County Engineer"

McArthur Twp.
Harrison Twp.
Frac. Sec. 8, T.2, R.15
OR 9 Pg. 305
09-062-00-00-057.001
Super Foods Services Inc.
3.925 Ac.
DB 404 Pg. 970
DB 344 Pg. 327
OR 344 Pg. 327
Super Foods Services Inc.
16.00 Ac.
09-062-00-00-062
Super Foods Services Inc.
1.90 Ac.