

REC'D 1-23-96 SWJ/alc ✓



Lee Surveying and Mapping Co.



Farm Surveys • Lot Surveys • Topography • Subdivisions • Construction Layout

143 EAST COLUMBUS AVENUE
BELLEFONTAINE, OHIO 43311

(513) 593-7335

JEFFREY I. LEE, P.S.

BETTY B. SMITH 1.163 ACRES

Lying in Virginia Military Survey 9904, McArthur Township, Logan County, Ohio

Being out of the Betty B. Smith 3.75 acre tract as deeded and described in Volume 338, Page 59, First Tract of the Logan County Records of Deeds and being more particularly described as follows:

Beginning at a stone in monument box found at the intersection of center-lines of County Highway 39 and County Highway 222.

THENCE, with the center-line of County Highway 222 (60 feet wide), N 74°-54'-00"W, a distance of 587.30 feet to railroad spike set at the TRUE POINT OF BEGINNING.

THENCE, with the west line of the Betty B. Smith 3.19 acre tract (Vol. 338, Pg. 59, Second Tract), S 05°-41'-26"E, a distance of 228.29 feet to a 5/8 inch iron rod set.

THENCE, N 74°-54'-00"W, a distance of 238.63 feet to a 5/8 inch iron rod set.

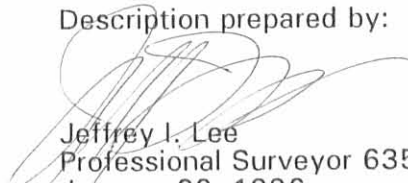
THENCE, with the east line of the Miriam I. Fulmer 1.19 acre tract (O.R. 47, Pg. 976), N 05°-03'-32"W, a distance of 227.35 feet to a railroad spike found on the center-line of said County Highway 222.

THENCE, with the center-line of County Highway 222, S 74°-54'-00" E, a distance of 235.95 feet to the point of beginning.

Containing 1.163 acres of which 0.163 acre is within the highway right-of-way.

The basis for bearings is the center-line of County Highway 222 being N 74°-54'-00"W, and all other bearings are from angles and distances measured in a field survey by Lee Surveying and Mapping Co., Inc. on January 22, 1996.

Description prepared by:


Jeffrey I. Lee
Professional Surveyor 6359
January 22, 1996



ORIGINAL STAMP IN GREEN

INDEXED ON MAP
9055 ID-1

REC'D 1-23-96 SJK OK ✓



Lee Surveying and Mapping Co.



Farm Surveys • Lot Surveys • Topography • Subdivisions • Construction Layout

143 EAST COLUMBUS AVENUE
BELLEFONTAINE, OHIO 43311

(513) 593-7335

JEFFREY I. LEE, P.S.

BETTY B. SMITH 5.221 ACRES

Lying in Virginia Military Survey 9904, McArthur Township, Logan County, Ohio

Being all of the Betty B. Smith 3.19 acre tract and part of the 3.75 acre tract as deeded and described in Volume 338, Page 59, First and Second tracts of the Logan County Records of Deeds and being more particularly described as follows:

Beginning at a stone in monument box found at the intersection of center-lines of County Highway 39 and County Highway 222.

THENCE, with the center-line of County Highway 222 (60 feet wide), N 74°-54'-00"W, a distance of 363.31 feet to railroad spike found at the TRUE POINT OF BEGINNING.

THENCE, with the west line of the Lisa D. Esch, 4.25 acre tract (Vol. 408, Pg. 460), S 6°-37'-48" E, a distance of 605.84 feet to a sandstone found.

THENCE, with the north line of the Jack A. Reasor 7.0 acre tract (O.R. 92, Pg. 156), N 82°-21'-14" W, a distance of 459.63 feet to a 5/8 inch iron rod set.

THENCE, with the east line of the Cynthia D. Eulrich, 7.68 acre tract (O.R. 46, Pg. 257), and the Miriam I. Fulmer 1.19 acre tract (O.R. 47, Pg. 976), N 5°-03'-32" W, a distance of 435.67 feet to a 5/8 inch iron rod set.

THENCE, S 74°-54'-00" E, a distance of 238.63 feet to a 5/8 inch iron rod set.

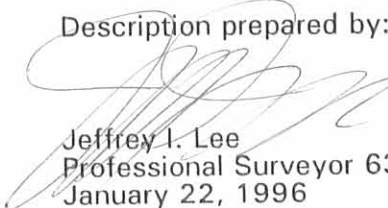
THENCE, N 5°-41'-26" W, a distance of 228.29 feet to a railroad spike set.

THENCE, with the center-line of County Highway 222, S 74°-54'-00" E, a distance of 223.99 feet to the point of beginning.

Containing 5.221 acres of which 0.155 acre is within the highway right-of-way.

The basis for bearings is the center-line of County Highway 222 being N 74°-54'-00" W, and all other bearings are from angles and distances measured in a field survey by Lee Surveying and Mapping Co., Inc. on January 22, 1996.

Description prepared by:


Jeffrey I. Lee
Professional Surveyor 6359
January 22, 1996



L 2358

ORIGINAL STAMP IN GREEN

INDEXED ON MAP
9055 1D-2

REC'D 1-23-96 8M OK



MIRIAM I. FULMER
1.19 ACRES
O.R. 47. PG. 976
TRACTS 1 AND 2

CYNTHIA D. EULRICH
7.68 ACRES
O.R. 46. PG. 257

1.163 ACRES
OF WHICH 0.163 ACRE
IS WITHIN HIGHWAY
RIGHT-OF-WAY

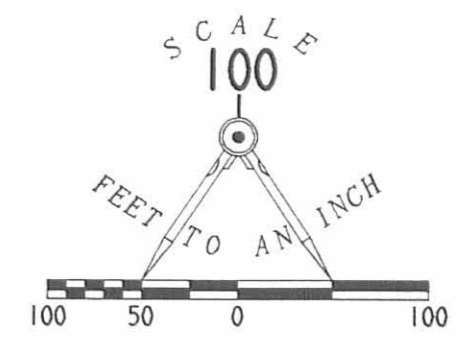
5.221 ACRES
OF WHICH 0.155 ACRE IS WITHIN
HIGHWAY RIGHT-OF-WAY

LISA D. ESCH
4.25 ACRES
VOL. 408. PG. 460

BETTY B. SMITH
3.75 ACRES
VOL. 338. PG. 59
FIRST TRACT

BETTY B. SMITH
3.19 ACRES
VOL. 338. PG. 59
SECOND TRACT

JACK A. REASOR
7.0 ACRES
O.R. 92. PG. 156



REFERENCES

LOGAN COUNTY ENGINEER'S FILES:
FIELD BOOK 598, PAGES 36-37
FIELD BOOK 358, PAGE 26
FIELD BOOK 579, PAGES 11, 15-21
FIELD BOOK 555, PAGES 66-69
R-5590

LEGEND

- 5/8" IRON ROD SET
- ⊕ RAILROAD SPIKE SET
- ⊠ SANDSTONE FOUND
- ⊡ STONE IN MONUMENT BOX FOUND
- ⊗ RAILROAD SPIKE FOUND

**SURVEY OF TWO TRACTS OUT OF
THE BETTY B. SMITH
3.75 AND 3.19 ACRE TRACTS
VOLUME 338, PAGE 59
FIRST AND SECOND TRACTS
VIRGINIA MILITARY SURVEY 9904
McARTHUR TOWNSHIP
LOGAN COUNTY, OHIO**



SURVEYED BY
Jeffrey I. Lee
JEFFREY I. LEE
PROFESSIONAL SURVEYOR 6359
JANUARY 22, 1996

ORIGINAL STAMP IN GREEN

COPYRIGHT 1996 BY:
LEE SURVEYING & MAPPING CO., INC.
143 East Columbus Avenue
BELLEFONTAINE, OHIO 43311
(513) 593-7335

2 WORKING DAYS
BEFORE YOU DIG
CALL TOLL FREE **800-362-2764**
OHIO UTILITIES PROTECTION SERVICE.

INDEXED ON MAP
9055 IP

D 273 BBSMITH

L-2358-3

REC'D 1-24-12 SSM/OK

Lee Surveying and Mapping Co., Inc.

Land Surveys • Topography • Subdivisions • Construction Layout

117 N. Madriver St.
Bellefontaine OH 43311



Phone: (937) 593-7335
Fax: (937) 593-7444
surveys@lsmine.us

ESCH 2.180 ACRES

Lying in Virginia Military Survey 9904, McArthur Township, Logan County, Ohio.

Being out of the Terry L. Esch and Lisa D. Esch 5.221 acre tract as deeded and described in Official Record 308, Page 958, Tract I of the Logan County Records of Deeds and being more particularly described as follows:

Commencing on a stone found in a monument box on the intersection of the center-lines of County Highway 39 and County Highway 222.

THENCE, with the center-line of County Highway 222 (60 feet wide), N 74°-54'-00"W, a distance of 587.30 feet to a railroad spike found, passing a railroad spike found at 363.31 feet.

THENCE, with the east line of the Jerry P. Fry 1.163 acre tract (O.R. 1048, Pg. 91), S 05°-41'-26"E, a distance of 228.29 feet to a 5/8 inch iron rod found at the TRUE POINT OF BEGINNING, passing a 5/8 inch iron rod found at 32.09 feet.

THENCE, S 05°-41'-26"E, a distance of 404.97 feet to a 5/8 inch iron rod set.

THENCE, with the north line of the Jack A. Reasor 7 acre tract (O.R. 837, Pg. 7), N 82°-21'-14"W, a distance of 234.22 feet to a 5/8 inch iron rod found.

THENCE, with the east lines of the Cynthia D. Eulrich 7.68 acre tract (O.R. 46, Pg. 257) and the Miriam I. Fulmer, etal 0.19 acre tract (O.R. 195, Pg. 824, Tract 2), N 05°-03'-30"W, a distance of 435.68 feet to a 5/8 inch iron rod found.

THENCE, with the south line of the aforesaid 1.163 acre tract, S 74°-53'-58"E, a distance of 238.63 feet to the point of beginning.

Containing 2.180 acres.

Property is subject to any and all previous easements and rights-of-way of record.

This tract of land is to only be attached to adjoining parcel of land with road frontage.

The basis for bearings is the center-line of County Highway 222, being N 74°-54'-00"W, and all other bearings are from angles and distances measured in a field survey by Lee Surveying and Mapping Co., Inc. on January 23, 2012.

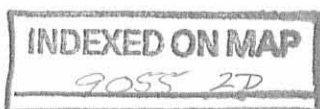


ORIGINAL STAMP IN GREEN

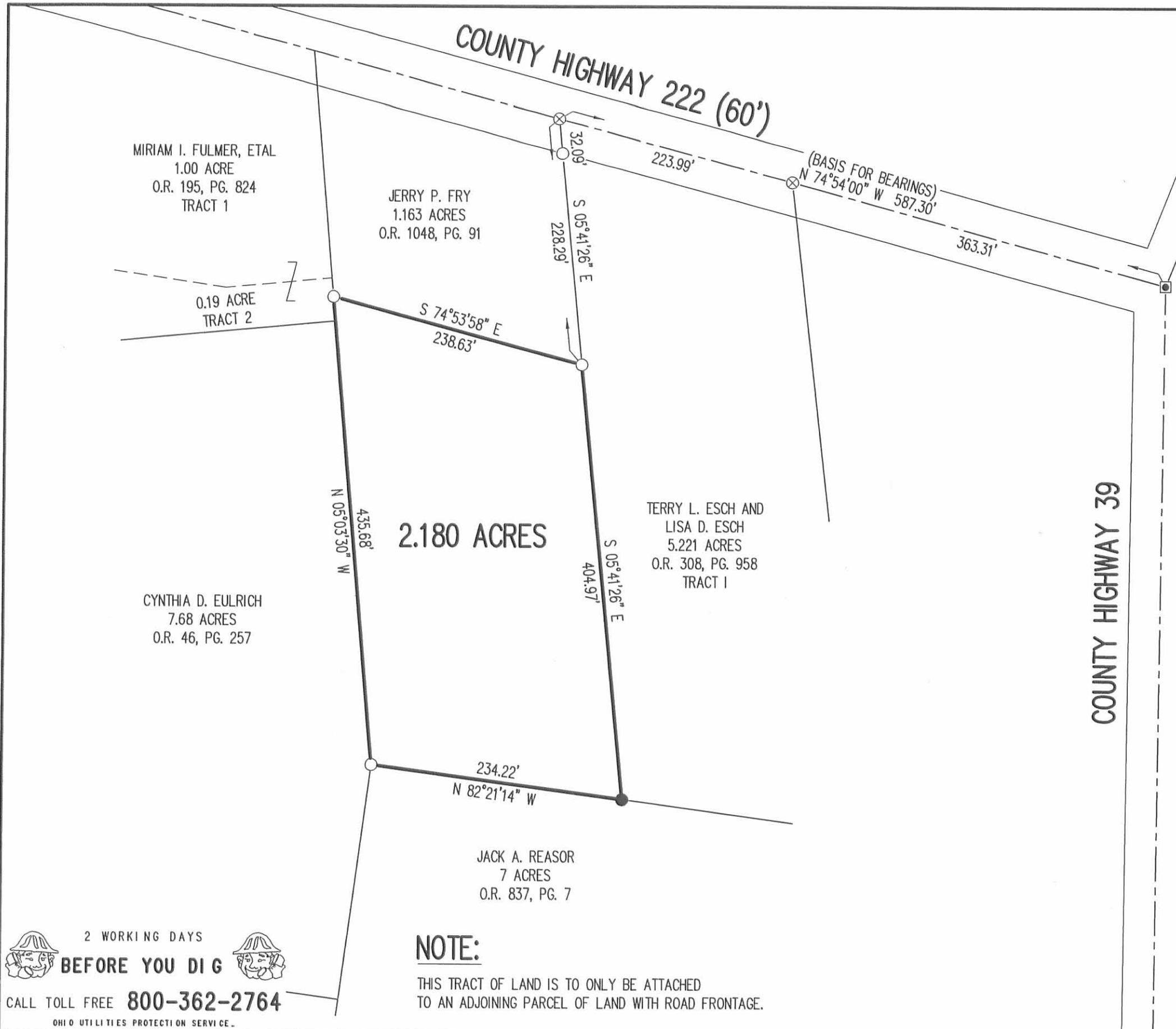
Description prepared by:

William K. Bruce
Professional Surveyor 7437
January 23, 2012

L-23580112



REC'D 1-24-12 smj/ok



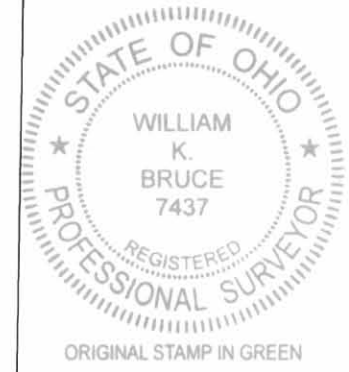
SCALE
100
FEET TO AN INCH

LEGEND:

- STONE FOUND IN MONUMENT BOX
- ⊗ RAILROAD SPIKE FOUND
- 5/8 INCH IRON ROD FOUND
- 5/8 INCH IRON ROD SET WITH PLASTIC I.D. CAP STAMPED "LSM 7437"

SURVEY OF 2.180 ACRES OUT OF THE
TERRY L. ESCH AND
LISA D. ESCH
5.221 ACRE TRACT
OFFICIAL RECORD 308, PAGE 958
TRACT I
VIRGINIA MILITARY SURVEY 9904
McARTHUR TOWNSHIP
LOGAN COUNTY, OHIO

SURVEYED BY:
William K. Bruce
WILLIAM K. BRUCE
PROFESSIONAL SURVEYOR 7437
JANUARY 23, 2012



COPYRIGHT 2012 BY:
LEE SURVEYING & MAPPING CO., INC.
117 North Madriver Street
BELLEFONTAINE, OHIO 43311
(937) 593-7335
WWW.LSMINC.US
surveys@lsminc.us
KSS D0112 23580112 L-2358-3

NOTE:
THIS TRACT OF LAND IS TO ONLY BE ATTACHED
TO AN ADJOINING PARCEL OF LAND WITH ROAD FRONTAGE.

2 WORKING DAYS
BEFORE YOU DIG
CALL TOLL FREE **800-362-2764**
OHIO UTILITIES PROTECTION SERVICE.

INDEXED ON MAP
9055 2P