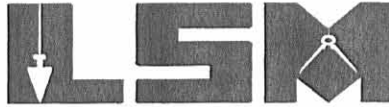


Received 3-1-02 OK JGL

Lee Surveying and Mapping Co., Inc.

Land Surveys • Topography • Subdivisions • Construction Layout

117 N. Madriver St.
Bellefontaine OH 43311



Phone: (937) 593-7335
Fax: (937) 593-7444

JENKINS 1.095 ACRES

Lying in Virginia Military Survey 9902, McArthur Township, Logan County, Ohio.

Being out of the David Lee Jenkins and Lucille L. Jenkins 46.820 acre tract as deeded and described in Official Record 523, Page 530, Tract I of the Logan County Records of Deeds and being more particularly described as follows:

Beginning at a 1 inch iron pipe found at the southeast corner of Virginia Military Survey 9902 on the center-line of County Highway 37.

THENCE, with the south line of Virginia Military Survey 9902 and the center-line of County Highway 37 (60 feet wide), S 79°-30'-00" W, a distance of 1318.00 feet to a MAG nail set at the TRUE POINT OF BEGINNING.

THENCE, with the south line of Virginia Military Survey 9902 and the center-line of County Highway 37, S 79°-30'-00" W, a distance of 152.00 feet to a railroad spike found.

THENCE, with the east line of the remainder of the Ronald A. Lawrence original 100.0 acre tract, now 3.000 acres, (O.R. 250, Pg. 368), N 10°-30'-00" W, a distance of 306.71 feet to a 5/8 inch iron rod found, passing a 5/8 inch iron rod found at 30.00 feet.

THENCE, N 74°-10'-58" E, a distance of 152.66 feet to a 5/8 inch iron rod set.

THENCE, with the west line of the David L. Jenkins 29.65 acre tract (O.R. 437, Pg. 273), S 10°-30'-00" E, a distance of 320.86 feet to the point of beginning, passing a 5/8 inch iron rod set at 290.86 feet.

Containing 1.095 acres, of which 0.105 acre is within the highway right-of-way.

The basis for bearings is the south line of Virginia Military Survey 9902, being S 79°-30'-00" W, and all other bearings are from angles and distances measured in a field survey by Lee Surveying and Mapping Co., Inc. on February 15, 2002.

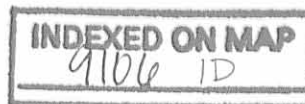
Description prepared by:



ORIGINAL STAMP IN GREEN

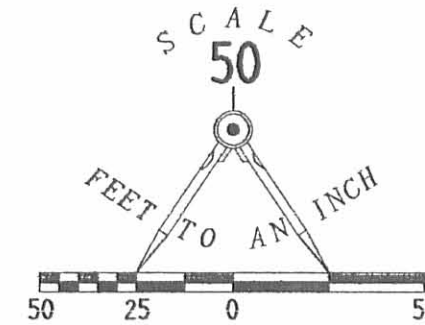
[Handwritten Signature]
Jeffrey I. Lee
Professional Surveyor 6359
February 26, 2002

L-2457



DAVID LEE JENKINS AND
LUCILLE L. JENKINS
46.820 ACRES
O.R. 523. PG. 530
TRACT 1

SURVEY OF 1.095 ACRES OUT OF THE
DAVID LEE JENKINS AND LUCILLE L. JENKINS
46.820 ACRE TRACT
OFFICIAL RECORD 523. PAGE 530. TRACT 1
VIRGINIA MILITARY SURVEY 9902
MCARTHUR TOWNSHIP
LOGAN COUNTY, OHIO



LEGEND

- 5/8 INCH IRON ROD SET WITH ID CAP STAMPED "LEE6359"
- 5/8 INCH IRON ROD FOUND
- MAG NAIL SET
- ⊗ RAILROAD SPIKE FOUND
- 1 INCH IRON PIPE FOUND

1.095 ACRES

OF WHICH 0.105 ACRE IS IN THE
HIGHWAY RIGHT-OF-WAY

RONALD A. LAWRENCE
AND DOUGLAS W. LAWRENCE
ORIGINAL 100.0 ACRES
(NOW 3.000 ACRES)
O.R. 250. PG. 368

DAVID L. JENKINS
29.65 ACRES
O.R. 437. PG. 273

VIRGINIA MILITARY SURVEY 9902
VIRGINIA MILITARY SURVEY 10122

COUNTY HIGHWAY 37 (60')

INDEXED ON MAP
91061P



ORIGINAL STAMP IN GREEN

SURVEYED BY:

JEFFREY I. LEE
PROFESSIONAL SURVEYOR 6359
FEBRUARY 15, 2002

COPYRIGHT 2002 BY:
LEE SURVEYING & MAPPING CO., INC.
117 North Madriver Street
BELLEFONTAINE, OHIO 43311

(937) 593-7335
D 0302 LAWRNC2 L-2457-3

REC'D 2-19-04 SUM OK

Lee Surveying and Mapping Co., Inc.

Land Surveys • Topography • Subdivisions • Construction Layout

117 N. Madriver St.
Bellefontaine OH 43311



Phone: (937) 593-7335
Fax: (937) 593-7444

SHOFFNER LEACHFIELD EASEMENT

Lying in Virginia Military Survey 9902, McArthur Township, Logan County, Ohio

Being an easement for a leachfield over the David R. Shoffner and Janelle M. Shoffner 1.095 acre tract as deeded and described in Official Record 559, Page 792 of the Logan County Records of Deeds and being more particularly described as follows:

Beginning at a railroad spike found on the center-line of County Highway 37 (60 feet wide) at the southwest corner of the said 1.095 acre tract.

THENCE, with the west line of the said 1.095 acre tract and the east line of the Ronald A. Lawrence or Ronald J. Lawrence, Trustees 3.000 acre tract (O.R. 653, Pg. 673), N 10°-30'-00"W, a distance of 215.35 feet to a point at the TRUE POINT OF BEGINNING, passing a 5/8 inch iron rod found at 30.00 feet.

THENCE, continuing with the west line of the said 1.095 acre tract and the east line of the said 3.000 acre tract, N 10°-30'-00"W, a distance of 59.31 feet to a point.

THENCE, N 80°-18'-09"E, a distance of 62.03 feet to a point.

THENCE, S 13°-13'-37"E, a distance of 29.16 feet to a point.

THENCE, S 54°-41'-21"W, a distance of 69.86 feet to the point of beginning.

The basis for bearings is the south line of Virginia Military Survey 9902, being S 79°-30'-00" W, and all other bearings are from angles and distances measured in a field survey by Lee Surveying and Mapping Co., Inc. on January 5, 2004.

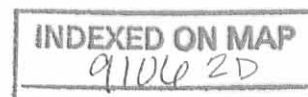
Description prepared by:



ORIGINAL STAMP IN GREEN

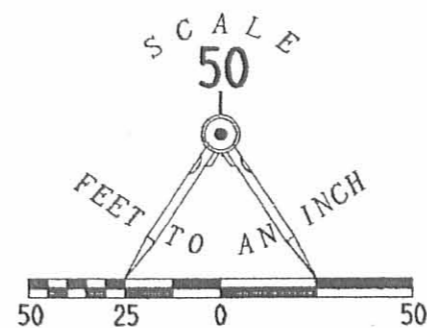
Jeffrey I. Lee
Professional Surveyor 6359
January 27, 2004
Revised February 13, 2004

L-2457

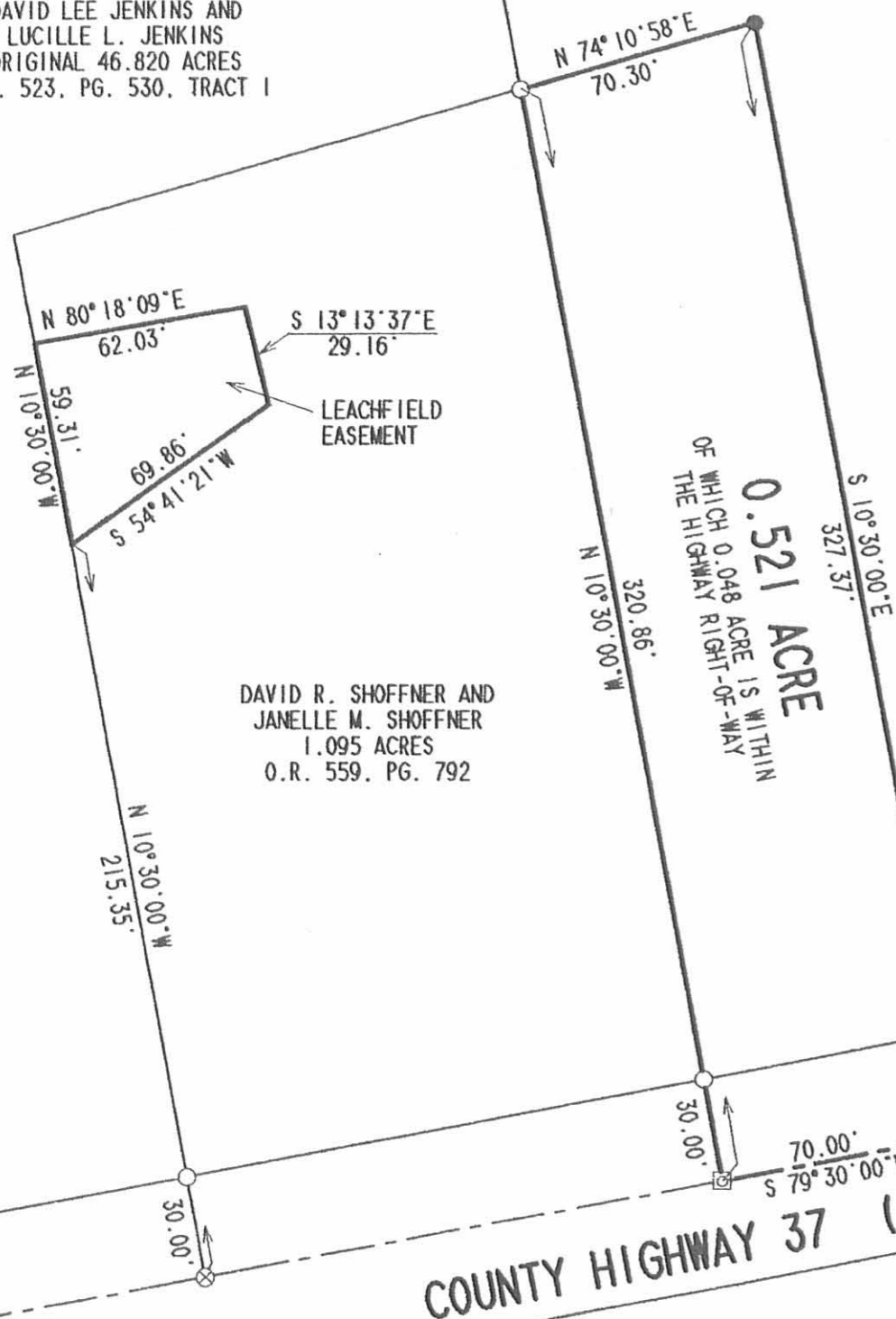


DAVID LEE JENKINS AND
LUCILLE L. JENKINS
ORIGINAL 46.820 ACRES
O.R. 523, PG. 530, TRACT I

DAVID L. JENKINS
29.65 ACRES
O.R. 437, PG. 273



SURVEY OF 0.521 ACRE OUT OF
THE DAVID L. JENKINS
ORIGINAL 29.65 ACRE TRACT
OFFICIAL RECORD 437, PAGE 273
VIRGINIA MILITARY SURVEY 9902
McARTHUR TOWNSHIP
LOGAN COUNTY, OHIO



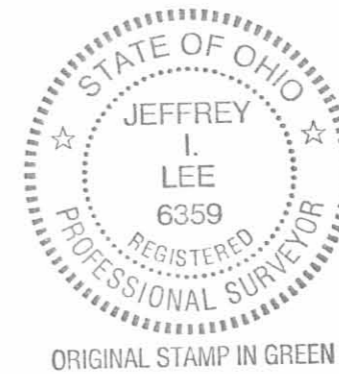
DAVID R. SHOFFNER AND
JANELLE M. SHOFFNER
1.095 ACRES
O.R. 559, PG. 792

VIRGINIA MILITARY SURVEY 9902
VIRGINIA MILITARY SURVEY 10122

COUNTY HIGHWAY 37 (60')

LEGEND

- ☐ MAG NAIL FOUND
- MAG NAIL SET
- 5/8 INCH IRON ROD FOUND
- 5/8 INCH IRON ROD SET
- 1" IRON PIPE FOUND
- ⊗ RAILROAD SPIKE FOUND



ORIGINAL STAMP IN GREEN

SURVEYED BY:

JEFFREY I. LEE
PROFESSIONAL SURVEYOR 6359
JANUARY 5, 2004
REVISED FEBRUARY 2, 2004

COPYRIGHT 2004 BY:
LEE SURVEYING & MAPPING CO., INC.
117 North Madriver Street
BELLEFONTAINE, OHIO 43311
(937) 593-7335
D411 LAWRNC3 L-2457-3 ✓

INDEXED ON MAP
9106 2P

2 WORKING DAYS
BEFORE YOU DIG
CALL TOLL FREE 800-362-2764
OHIO UTILITIES PROTECTION SERVICE.

REC'D 10-20-96 *any ok* ✓



Lee Surveying and Mapping Co., Inc.



Farm Surveys • Lot Surveys • Topography • Subdivisions • Construction Layout

117 North Madriver Street
Bellefontaine, Ohio 43311

Phone (937) 593-7335
Fax (937) 593-7444

LAWRENCE 50.180 ACRES

Lying in Virginia Military Survey 9902, McArthur Township, Logan County, Ohio.

Being out of the Ronald A. Lawrence and Douglas W. Lawrence original 100 acre tract as deeded and described in Official Record 250, Page 368 of the Logan County Records of Deeds and being more particularly described as follows:

Beginning at a 1 inch iron pipe found at the southeast corner of Virginia Military Survey 9902 and on the center-line of County Highway 37 (60 feet wide).

THENCE, with the south line of Virginia Military Survey 9902 and the center-line of County Highway 37, S 79°-30'-00" W, a distance of 1896.07 feet to a railroad spike set at the TRUE POINT OF BEGINNING.

THENCE, with the south line of Virginia Military Survey 9902 and the center-line of County Highway 37, S 79°-30'-00" W, a distance of 746.43 feet to a railroad spike set.

THENCE, with the east line of the Forda W. Linthicum, 100 acre tract, (Volume 257, Pg. 464), N 10°-36'-00" W, a distance of 2925.00 feet to a 3/4 inch iron rod set.

THENCE, N 80°-30'-00" E, a distance of 751.65 feet to a 3/4 inch iron rod set.

THENCE, S 10°-30'-00" E, a distance of 2911.88 feet to the point of beginning.

Containing 50.180 acres of which 0.514 acre is within the highway right-of-way.

The basis for bearings is the south line of Virginia Military Survey 9902 being S 79°-30'-00" W, and all other bearings are from angles and distances measured in a field survey by Lee Surveying and Mapping Co., Inc. on October 10, 1996.

Description prepared by:

Jeffrey I. Lee
Professional Surveyor 6359
October 22, 1996



L-2457

ORIGINAL STAMP IN GREEN

INDEXED ON MAP
9106 3D-1

REC'D 10-28-96 SMY OKJCH



Lee Surveying and Mapping Co., Inc.



Farm Surveys • Lot Surveys • Topography • Subdivisions • Construction Layout

117 North Madriver Street
Bellevue, Ohio 43311

Phone (937) 593-7335
Fax (937) 593-7444

LAWRENCE 3.000 ACRES

Lying in Virginia Military Survey 9902, McArthur Township, Logan County, Ohio.

Being out of the Ronald A. Lawrence and Douglas W. Lawrence original 100 acre tract as deeded and described in Official Record 250, Page 368 of the Logan County Records of Deeds and being more particularly described as follows:

Beginning at a 1 inch iron pipe found at the southeast corner of Virginia Military Survey 9902 and on the center-line of County Highway 37 (60 feet wide).

THENCE, with the south line of Virginia Military Survey 9902 and the center-line of County Highway 37, S 79°-30'-00" W, a distance of 1470.00 feet to a railroad spike set at the TRUE POINT OF BEGINNING.

THENCE, with the south line of Virginia Military Survey 9902 and the center-line of County Highway 37, S 79°-30'-00" W, a distance of 426.07 feet to a railroad spike set.

THENCE, N 10°-30'-00" W, a distance of 306.71 feet to a 3/4 inch iron rod set.

THENCE, N 79°-30'-00" E, a distance of 426.07 feet to a 3/4 inch iron rod set.

THENCE, S 10°-30'-00" E, a distance of 306.71 feet to the point of beginning.

Containing 3.000 acres of which 0.293 acre is within the highway right-of-way.

The basis for bearings is the south line of Virginia Military Survey 9902 being S 79°-30'-00" W, and all other bearings are from angles and distances measured in a field survey by Lee Surveying and Mapping Co., Inc. on October 10, 1996.

Description prepared by:

Jeffrey I. Lee
Professional Surveyor 6359
October 28, 1996

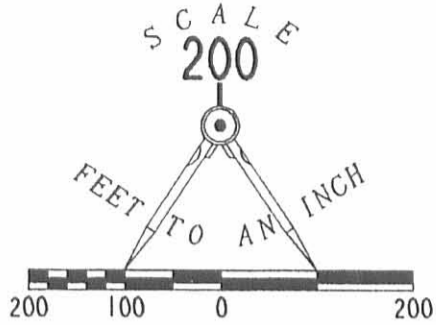


L 2457

ORIGINAL STAMP IN GREEN

INDEXED ON MAP
91063D-2

N 80° 30' 00" E
751.65'



2 WORKING DAYS
BEFORE YOU DIG
CALL TOLL FREE **800-362-2764**
OHIO UTILITIES PROTECTION SERVICE.

RONALD A. LAWRENCE
100.00 AC.
O.R. 250. PG. 368

LEGEND

- ⊕ R.R SPIKE SET
- 3/4" IRON BAR FOUND
- 3/4" IRON ROD SET
- 1" IRON PIPE FOUND
- ⊗ P.K. NAIL FOUND
- MONUMENT BOX WITH STONE FOUND

50.180 ACRES
OF WHICH 0.514 ACRE
IS WITHIN THE HIGHWAY
RIGHT-OF-WAY

**BOUNDARY SURVEY OF TWO TRACTS
OUT OF THE
RONALD A. LAWRENCE AND
DOUGLAS W. LAWRENCE
ORIGINAL 100 ACRE TRACT
OFFICIAL RECORD 250, PAGE 368
VIRGINIA MILITARY SURVEY 9902
McARTHUR TOWNSHIP
LOGAN COUNTY, OHIO**



ORIGINAL STAMP IN GREEN

SURVEYED BY:

JEFFREY I. LEE
PROFESSIONAL SURVEYOR 6359
OCTOBER 10, 1996

FORDA W. LINTHICUM
100.00 AC.
VOL. 257. PG. 464

N 10° 36' 00" W
2925.00'

2911.88'
S 10° 30' 00" E

N 79° 30' 00" E
426.07'

3.000 AC.
OF WHICH 0.293 ACRE
IS WITHIN THE HIGHWAY
RIGHT-OF-WAY

306.71'
306.71'

S 10° 30' 00" E
306.71'

30.00'
1470.00'
S 79° 30' 00" W

V.M.S. 10122

V.M.S. 9902
V.M.S. 9903-9928
TOWNSHIP ROAD 99

COUNTY-HIGHWAY-37-(60°)

746.43'
S 79° 30' 00" W
BASIS FOR BEARINGS

COPYRIGHT 1996 BY:
LEE SURVEYING & MAPPING CO., INC.
117 North Madriver Street
BELLEFONTAINE, OHIO 43311
(937) 593-7335

INDEXED ON MAP
9106 3P

LESLIE H. GEESLIN
 REGISTERED SURVEYOR 5248
 P.O. BOX 274
 RUSHSVAINIA, OHIO 43347
 TELEPHONE: (937)-468-7265

JENKINS SURVEY
 February 21, 2009

The following described real estate situated in the State of Ohio, County of Logan, Township of McArthur, being part of Virginia Military Survey 9902 and more particularly described as follows:

Beginning at a railroad spike found in the centerline of County Highway 37 (south line of V. M. S. 9902) at the southeast corner of Gary E. Herren and Holly A. Herren's 100.00 acre tract as described in O. R. Vol. 722 Page 64.

Thence with said Herren's east line N. 10° 40' 07" W. 2924.39 feet to a 5/8 inch iron bar found.

Thence with said Herren's east line N. 10° 52' 10" W. 392.51 feet to a 5/8 inch iron bar set at the southeast corner of Opal G. Wagner et al's 147.73 acre tract as described in O. R. Vol. 37 Page 262 and the southwest corner of Larry L. Kinney Trustee et al's 96.91 acre tract as described in O. R. Vol. 635 Page 404.

Thence with said Kinney's south line N. 79° 15' 16" E. 1324.05 feet to a 5/8 inch iron bar set at the northwest corner of J. Robert Renick Trustee's 69.81 acre tract as described in O. R. Vol. 588 Page 805 (Parcel 12 Tract 2).

Thence with said Renick's west line S. 10° 36' 09" E. 2338.52 feet to a 5/8 inch iron bar set.

Thence with said Renick's south line N. 79° 28' 40" E. 1310.59 feet to a 6 inch wood post found in the east line of V. M. S. 9902 and the west line V. M. S. 9903-9928 and the west line of Township Road 99.

Thence with said V. M. S. line and the west line of T. R. 99 S. 11° 21' 08" E. 257.57 feet to a 5/8 inch iron bar set.

Thence S. 78° 47' 46" W. 2293.57 feet to a 5/8 inch iron bar set.

Thence S. 12° 16' 11" E. 699.00 feet to a magnetic nail set in the centerline of C. H. 37 and the south line of V. M. S. 9902, passing a 5/8 inch iron bar set at 669.00 feet.

Thence with said centerline and south line S. 79° 28' 27" W. 359.69 feet to the place of beginning.

Containing 92.969 acres more or less of which 43.791 acres are in David Lee Jenkins et ux's 50.180 acre tract(O. R. Vol. 523 Page 580 Tract 2), 41.184 acres are in David Lee Jenkins et ux's 46.820 acre tract (O. R. Vol. 523 Page 580 Tr. I) and 7.994 acres are in David L. Jenkins' 20.65 acre tract (O. R. Vol. 437 Page 273) with 0.248 acre in the right of way of C. R. 37..

Bearings are based on an assumed bearing for the centerline of C. H. 37 (S. 79° 28' 27" W.) in this field survey by Leslie H. Geeslin, Reg. Surveyor No. 5248, on Feb. 21, 2009.



Leslie H. Geeslin

INDEXED ON MAP
 9106 4D-1

LESLIE H. GEESLIN
 REGISTERED SURVEYOR 5248
 P.O. BOX 274
 RUSHSVAINIA, OHIO 43347
 TELEPHONE: (937)-468-7265

JENKINS SURVEY 2

February 23, 2009

The following described real estate situated in the State of Ohio, County of Logan Township of McArthur, being part of Virginia Military Survey 9902 and more particularly described as follows:

Beginning at a 1 inch iron pipe found at the south east corner of V. M. S. 9902 and the southwest corner of V. M. S. 9903-9928 in the centerline of County Highway 37 (the west side of Township Road 99).

Thence with said centerline and the south line of V. M. S. 9902 S. 79° 28' 27" W. 571.29 feet to a magnetic nail found at the southeast corner of Kristy Young's 1.925 acre tract as described in O. R. Vol. 767 Page 55.

Thence with said Young's east line N. 5° 16' 12" W. 323.63 feet to a 5/8 inch iron bar found , passing a 5/8 inch iron bar found at 30.20 feet.

Thence with said Young's north line N. 89° 04' 22" W. 243.68 feet to a 5/8 inch iron bar found at said Young's northwest corner and the northeast corner of her 1.379 acre tract (O. R. Vol. 767 Page 57).

Thence with said Young's north line S. 74° 06' 30" W. 183.15 feet to a 5/8 inch iron bar found.

Thence with said Young's west line S. 10° 31' 29" E. 353.53 feet to a magnetic nail found in the centerline of C. H. 37 and the south line of V. M. S. 9902, passing a 5/8 inch iron bar found at 323.59 feet.

Thence with said centerline and V. M. S. line S. 79° 28' 27" W. 284.97 feet to a magnetic nail found at the southeast corner of David R. Shoffner and Janelle M. Shoffner's 0.521 acre tract as described in O. R. Vol. 703 Page 435.

Thence with said Shoffner's east line N. 10° 38' 12" W. 327.02 feet to a 5/8 inch iron bar found, passing a 5/8 inch iron bar found at 30.00 feet.

Thence with said Shoffner's north line and the north line of said Shoffner's 1.095 acre tract as described in O. R. Vol. 559 Page 792 S.74° 16' 27" W. 222.51 feet to a 5/8 inch iron bar found at the northeast corner of Logan M. Nessler's 3.000 acre tract as described in O. R. Vol. 903 Page 233.

Thence with said Nessler's north line S. 79° 28' 24" W. 426.26 feet to a 5/8 inch iron bar found.

Thence with said Nessler's west line S. 10° 33' 35" E. 306.85 feet to a railroad spike found in the centerline of C. H. 37 and the south line of V. M. S. 9902, passing a 5/8 inch iron bar found at 276.85 feet.

Thence with said centerline and V. M. S. line S. 79° 28' 27" W. 386.51 feet to a magnetic nail set.

Thence N. 12° 16' 11" W. 699.00 feet to a 5/8 inch iron bar set, passing a 5/8 inch iron bar set at 30.00 feet.

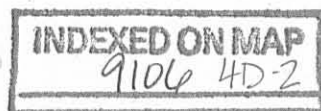
Thence N. 78° 47' 46" E. 2293.57 feet to a 5/8 inch iron bar set in the east line of V. M. S. 9902 and the west line of V. M. S. 9903-9928 (the west side of Township Road 99).

Thence with said V. M. S. line and T. R. line S. 11° 21' 08" E. 725.89 feet to the place of beginning.

Containing 29.494 acres more or less of which 0.855 acre is in the right of way of C. H. 37.

The above described 29.494 acre tract having 17.872 acres in David L. Jenkins' 29.65 acre tract (O. R. Vol. 437 Page 273), 5.233 acres in David Lee Jenkins etux's 46.82 acre tract (Tr. I-O. R. Vol.523 Page 530) and 6.389 acres in said Jenkins' 50.180 (Tr. 2) acre tract (O. R. Vol. 523 Page 530).

Bearings are based on an assumed bearing (S. 79° 28' 27" W.) for the centerline of C. H. 37 in this field survey by Leslie H. Geeslin, Reg. Surveyor 5248 on Feb. 24, 2009.



Leslie H. Geeslin

OPAL G. WAGNER ETAL. 127.73 AC. OR VOL 37 PG 262

LARRY L. KINNEY, TRUSTEE ETAL 96.91 AC. OR VOL 635 PG 404

N. 79° 15' 16" E. 1324.05'

N. 18° 52' 10" W. 372.51'

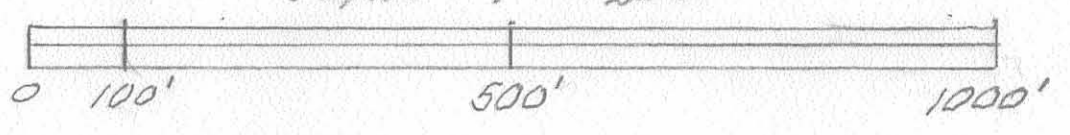
- LEGEND
- ⊕ = 5/8" IRON BAR SET
 - = 5/8" IRON BAR FOUND
 - △ = R.R SPIKE FOUND
 - = MAGNETIC NAIL FOUND
 - = MAGNETIC NAIL SET
 - ⬡ = 1" IRON PIPE FD.
 - = 6" WOOD POST FD.



Leslie H. Geeslin

J. ROBERT RENICK TRUSTEE 69.81 AC. OR VOL 588 PG 805 (PART TRACT 2)

SURVEY OF 93.016 AC. TRACT AND 29.494 AC. TRACT IN V.M.S. 9902, ME ARTHUR TOWNSHIP, LOGAN COUNTY, OHIO FOR DAVID JENKINS. FEBRUARY 24, 2009. SCALE: 1" = 200'



GARY E. HERREN & HOLLY A. HERREN 100.00 AC. OR VOL 722 PG 64

N. 10° 40' 07" W. 2924.39'

92.969 AC. (0.248A. IN R/W)

DAVID LEE JENKINS ETUX 50.180 AC. TR. 2 OR VOL 523 PG 530 TR. 1 46.82 AC.

(43.791A)

(41.184A)

A DAVID R. SHOFFNER & JANELLE M. SHOFFNER 0.521 AC. OR VOL 703 PG 435

B DAVID R. SHOFFNER ETUX 1.075 AC. OR VOL 559 PG 792

N. 79° 28' 40" E. 1310.59'

(7.994A)

S. 78° 47' 46" W. 2293.57' N. 78° 47' 46" E. 2293.57'

(5.233A)

29.494 AC. (0.855 AC IN R/W)

DAVID L. JENKINS 29.65 AC. OR VOL 437 PG 273

N. 12° 16' 11" W. 699.00' (6.389A)

LOGAN M. NESSLER 3.000 AC. OR VOL 903 PG 233

KRISTY YOUNG 1.379A. 1.925A. OR VOL 767 PG 57 OR VOL 767 PG 55

V.M.S. 9902

V.M.S. 9903 V.M.S. 9928

S. 79° 28' 27" W. 357.69'

S. 10° 33' 55" E. 306.85'

BEARING BASIS

S. 79° 28' 27" W. 289.97'

S. 74° 06' 30" W. 183.15'

N. 89° 04' 22" W. 243.68'

S. 11° 21' 08" E. 725.87'

V.M.S. 9902 V.M.S. 9903 - 9928

TWP. RD 99 (40')

COUNTY HWY. 37 (60') 30.00'

SOUTH LINE V.M.S. 9902 289.97' 279.94' 30.20'

INDEXED ON MAP 9106 4P

REC'D 9-10-10 SMM/OK

Lee Surveying and Mapping Co., Inc.

Land Surveys • Topography • Subdivisions • Construction Layout

117 N. Madriver St.
Bellefontaine OH 43311



Phone: (937) 593-7335
Fax: (937) 593-7444
surveys@lsmcinc.us

HERREN 10.000 ACRE

Lying in Virginia Military Survey 9902, McArthur Township, Logan County, Ohio.

Being out of the Gary E. Herren and Holly A. Herren 100 acre tract as deeded and described in Official Record 722, Page 64 of the Logan County Records of Deeds and being more particularly described as follows:

Beginning on a stone found in a monument box on the south line of Virginia Military Survey 9902 at the intersection of the center-lines of Township Road 31 and County Highway 37 at Station 124+85.9 (Logan County Engineer's Filed Book 708, Page 69).

THENCE, with the south line of Virginia Military Survey 9902 and the center-line of County Highway 37 (60 feet wide), S 82°-43'-07"W, a distance of 137.00 feet to a MAG nail set.

THENCE, N 07°-16'-53"W, a distance of 839.14 feet to a 5/8 inch iron rod set, passing a 5/8 inch iron rod set at 30.00 feet.

THENCE, N 82°-53'-08"E, a distance of 519.23 feet to a 5/8 inch iron rod set.

THENCE, S 07°-16'-53"E, a distance of 839.14 feet to a MAG nail set on the south line of Virginia Military Survey 9902 and the center-line of County Highway 37, passing a 5/8 inch iron rod set at 809.14 feet.

THENCE, with the south line of Virginia Military Survey 9902 and the center-line of County Highway 37, S 82°-56'-43"W, a distance of 382.23 feet to the point of beginning.

Containing 10.000 acres, of which 0.358 acre is within the highway right-of-way.

Property is subject to any and all previous easements and rights-of-way of record.

The basis for bearings is center-line of County Highway 37, being N 82°-43'-07"E, and all other bearings are from angles and distances measured in a field survey by Lee Surveying and Mapping Co., Inc. on September 8, 2010.



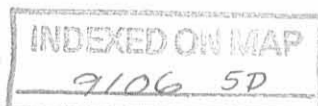
ORIGINAL STAMP IN GREEN

Description prepared by:

A handwritten signature in cursive script that reads 'William K. Bruce'.

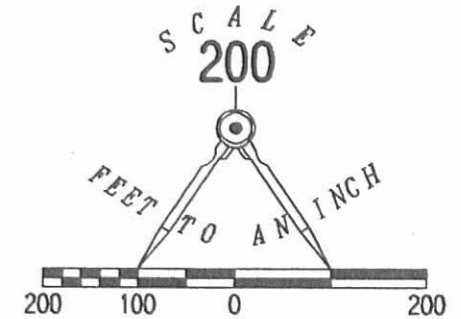
William K. Bruce
Professional Surveyor 7437
September 8, 2010

5020810



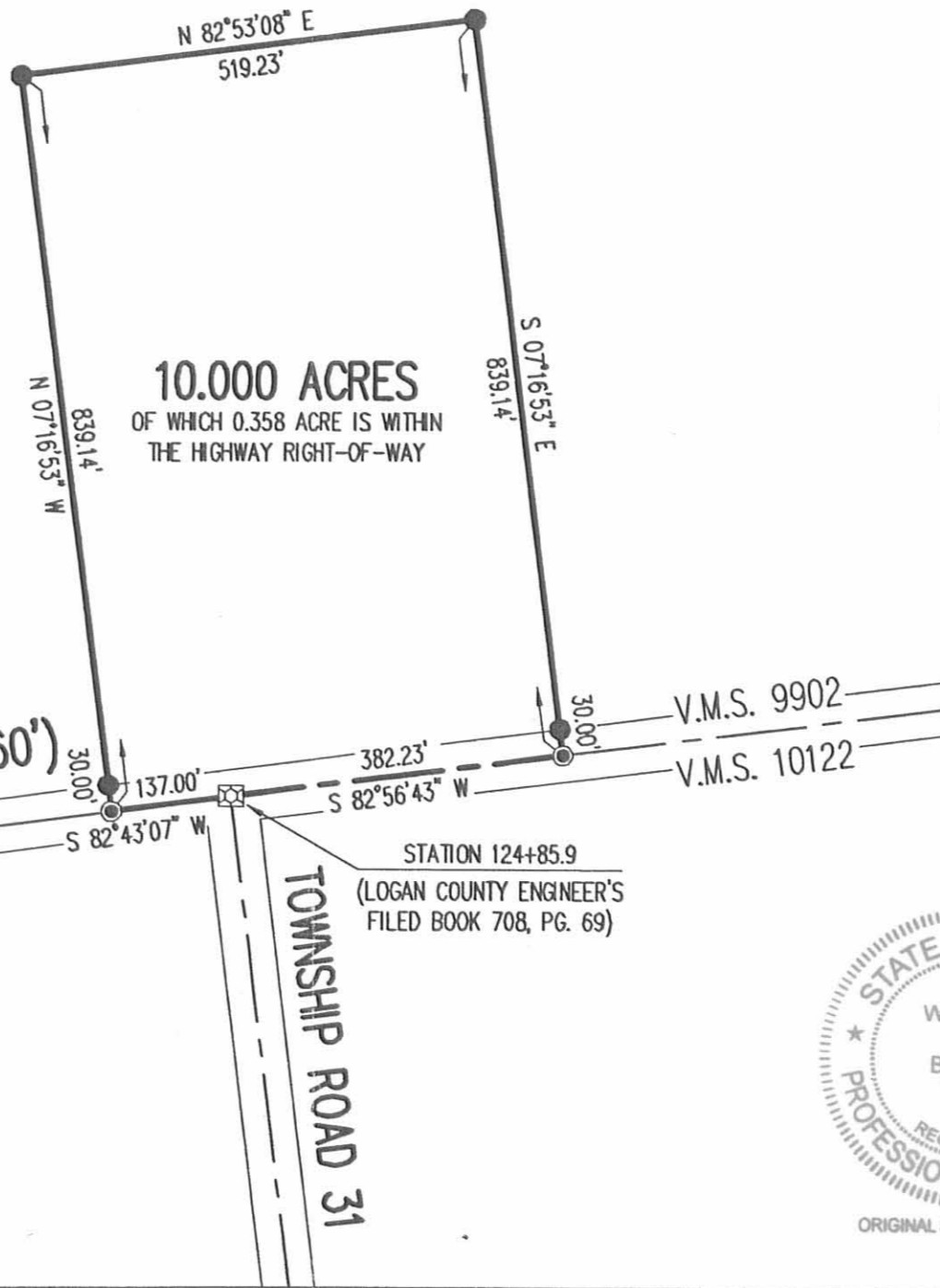
REV'D 9-10-10 Emy OK

GARY E. HERREN AND
HOLLY A. HERREN
100 ACRES
O.R. 722, PG. 64



LEGEND:

- ⊙ 3/4 INCH IRON ROD FOUND
- ⊠ STONE FOUND IN MONUMENT BOX
- ⊙ MAG NAIL SET
- 5/8 INCH IRON ROD SET WITH PLASTIC I.D. CAP STAMPED "LSM 7437"

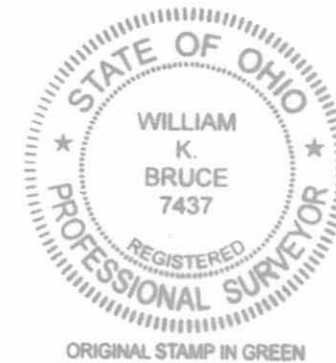


10.000 ACRES
OF WHICH 0.358 ACRE IS WITHIN
THE HIGHWAY RIGHT-OF-WAY

SURVEY OF 10.000 ACRES OUT OF THE
GARY E. HERREN AND
HOLLY A. HERREN
100 ACRE TRACT
OFFICIAL RECORD 722, PAGE 64
VIRGINIA MILITARY SURVEY 9902
McARTHUR TOWNSHIP
LOGAN COUNTY, OHIO

SURVEYED BY:

William K. Bruce
 WILLIAM K. BRUCE
 PROFESSIONAL SURVEYOR 7437
 SEPTEMBER 8, 2010



ORIGINAL STAMP IN GREEN

COPYRIGHT 2010 BY:
LEE SURVEYING & MAPPING CO., INC.
 117 North Madriver Street
 BELLEFONTAINE, OHIO 43311
 (937) 593-7335
 surveys@lsminc.us
 KSS D0810 5020810 L-5020-3

COUNTY HIGHWAY 37 (60')

TOWNSHIP ROAD 31

STATION 124+85.9
(LOGAN COUNTY ENGINEER'S
FILED BOOK 708, PG. 69)

STATION 110+66
(LOGAN COUNTY ENGINEER'S
FILED BOOK 577, PG. 22)

1282.57'
N 82°43'07" E
(BASIS FOR BEARINGS)

2 WORKING DAYS
BEFORE YOU DIG
 CALL TOLL FREE **800-362-2764**
 OHIO UTILITIES PROTECTION SERVICE.

INDEXED ON MAP
9106 SP

6-9-14

APPROVED

June 3, 2014

JENKINS SURVEY DESCRIPTION (12.292 ACRE PARCEL)

Being a parcel of land situated in McArthur Township, Logan County, Ohio, and being part of Virginia Military Survey 9902. Being more particularly described as follows :

Commencing for reference at a one inch iron pipe found at the southeast corner of V.M.S. 9902 and the southwest corner of V.M.S. 9903-9928 in the centerline of County Highway 37 (west side of Township Road 99) -

Thence, South 79°28'27" West, along the south line of V.M.S. 9902 and the centerline of County Highway 37, a distance of 1896.11 feet to a railroad spike found at the southwest corner of a 3.000 acre parcel conveyed to Logan M. Nessler by deed recorded at Official Record 903, page 233. Said point being the place of beginning for the parcel of land to be conveyed by this instrument -

Thence, continuing, South 79°28'27" West, along the last described line, a distance of 386.51 feet to a Mag nail found at the southwest corner of a 29.494 acre parcel of land conveyed to David L. Jenkins by deed recorded at Official Record 950, page 976 -

Thence, North 12°16'11" West, along the boundary line between said 29.494 acre parcel and a 92.969 acre parcel conveyed to Larry L. Kinney, trustee, by deed recorded at Official Record 946, page 699, passing through a 5/8 inch iron bar found at 30.00 feet, a distance of 699.00 feet to a 5/8 inch iron bar found at the northwest corner of said 29.494 acre parcel of land -

Thence, North 78°47'46" East, along the boundary line between said 29.494 acre parcel and said 92.969 acre parcel, a distance of 1054.79 feet to a 5/8 inch iron bar set -

Thence, South 10°38'12" East, a distance of 384.14 feet to a 5/8 inch iron bar found at the northeast corner of a 0.521 acre parcel of land conveyed to David R. and Janelle M. Shoffner by deed recorded at Official Record 703, page 435 -

Thence, South 74°16'27" West, along the north line of said 0.521 acre parcel and the extension thereof, a distance of 222.51 feet to a 5/8 inch iron bar found at the northwest corner of a 1.095 acre parcel of land conveyed to David R. Shoffner by deed recorded at Official Record 559, page 792. Said point also being the northeast corner of the aforementioned Nessler 3.000 acre parcel -

Thence, South 79°28'24" West, a distance of 426.26 feet to 5/8 inch iron bar found at the northwest corner of said Nessler 3.000 acre parcel -

Thence, South 10°33'35" East, passing through a 5/8 inch iron bar found at 276.85 feet, a distance of 306.85 feet to the place of beginning.

Containing 12.292 total acres of land more or less of which 0.266 acre lie in the County Highway 37 right-of-way.

Subject to all easements and right-of-way of record.

The herein surveyed parcel is a part of a 29.494 acre parcel of land conveyed to David L. Jenkins and recorded at Official record 950, page 976.

page 1

GEESLIN LAND SURVEYING 525 S. SECOND ST. COLDWATER , OHIO 45828 PHONE: (419) 678-7232	PERMANENT PARCEL No. _____		
	Part of _____ Sec. _____ T. _____ R. _____ Township _____		
Grantor: _____		Area Retained: _____ Acres	
Grantee: _____		Area Retained: _____ Acres	
Deed References: _____			
APPROVALS: AGENCY: _____		Board of Health Date _____	Township Zoning Officer Date _____
		County Engineer Date _____	

INDEXED ON MAP
9106 6D-1

June 3, 2014

JENKINS SURVEY DESCRIPTION (12.292 ACRE PARCEL CONTINUED)

Bearings are based on the centerline of County Highway 37 bearing South 79°28'27" West in accordance with the Jenkins Survey by Leslie Geeslin, P.S. 5248, dated February 24, 2009.

Reference is made to a survey of this area by James W. Geeslin, Professional Surveyor 7764, dated June 3, 2014. On file in the Logan County Engineer's Office.

Surveyed by James W. Geeslin
James W. Geeslin
P.S. 7764



page 2

GEESLIN LAND SURVEYING 525 S. SECOND ST. COLDWATER, OHIO 45828 PHONE: (419) 678-7232	PERMANENT PARCEL No. _____
	Part of _____ Sec. _____ T. _____ R. _____ Township _____
	Grantor: _____ Area Retained: _____ Acres _____ Grantee: _____ Area Retained: _____ Acres _____ Deed References: _____
	APPROVALS: AGENCY: _____ Board of Health Date _____ Township Zoning Officer Date _____ County Engineer Date _____

INDEXED ON MAP
9106 6.D-2

6-9-14

APPROVED

JENKINS SURVEY

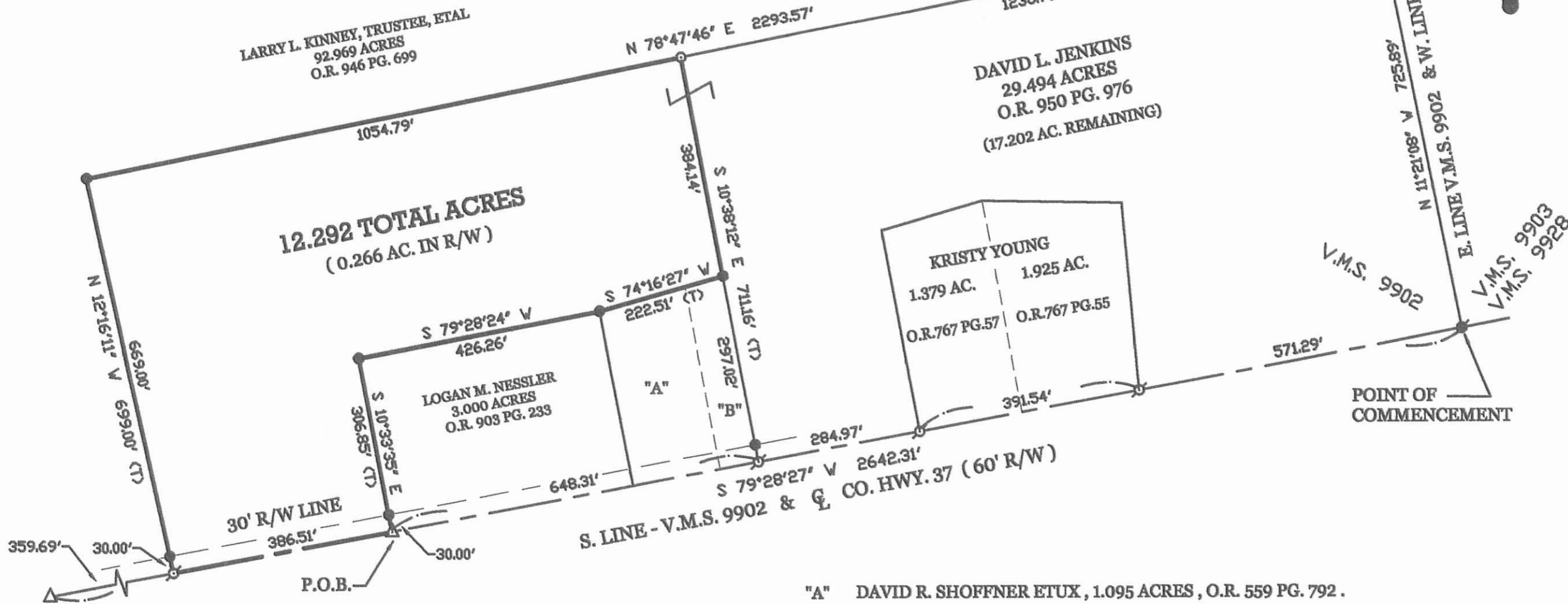
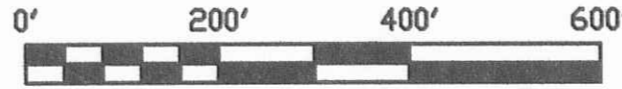
LEGEND

- △ = RAILROAD SPIKE FOUND.
- ⊙ = MAG NAIL FOUND.
- = 1" IRON PIPE FOUND.
- = 5/8 INCH IRON BAR FOUND.
- ⊙ = 5/8 INCH IRON BAR SET.

OF A 12.292 ACRE PARCEL IN V.M.S. 9902 , McARTHUR TOWNSHIP , LOGAN COUNTY , OHIO , BEING A PART OF A 29.494 ACRE PARCEL RECORDED AT O.R. 950 , PG. 976 .

JUNE 3 , 2014

SCALE 1" = 200'



- "A" DAVID R. SHOFFNER ETUX , 1.095 ACRES , O.R. 559 PG. 792 .
- "B" DAVID R. SHOFFNER & JANELLE M. SHOFFNER , 0.521 ACRE , O.R. 703 PG. 435 .

NOTE: THE CENTERLINE OF CO. HWY 37 WAS ASSUMED TO BEAR S. 79°28'27" W. IN ACCORDANCE WITH A SURVEY FOR DAVID JENKINS BY L. GEESLIN, P.S. 5248 , FEB. 24 , 2009 .

SURVEYED BY

James W. Geeslin
JAMES W. GEESLIN
 P.S. No. 7764

PERMANENT PARCEL No. _____	Part of: _____	Sec. _____	T _____	R _____	Township _____
	Grantor: _____	Area Retained: _____		Acres _____	
	Grantee: _____	Area Transferred: _____		Acres _____	
Deed References: _____					
APPROVALS:	County Engineer				
AGENCY:	Township Zoning Officer				
DATE:	Board of Health				



GEESLIN
LAND SURVEYING
 525 S. SECOND ST.
 COLDWATER, OHIO 45828
 PHONE (419) 678-7232

INDEXED ON MAP
 9106 6P