

FB 711

C.R. 130  
Sta. 125+00 to C.R. 37  
Harrison Twp., Logan Co., Ohio

36.58.04'

125+00 - P.I. - R.R. Spike  
set on the split of the two  
R/W monuments found -  
start of this survey -  
Ref: R/W Plan L-27

INDEXED ON MAP  
9402

C. Nichols  
C. Dill  
B. Simmons

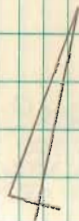
March - May 01

54

R/W Mon. Fd.  $\circ$   
30.30' Lt.  
E Sta. 144+99.46  
OK

R/W Mon. Fd.  $\circ$   
29.80' Lt.  
E Sta. 144+99.25  
OK

R/W Mon. Fd.  $\circ$   
30.18' Lt.  
E Sta. 139+99.10  
(Top Broken)



R/W Mon. Fd.  $\circ$   
30.02' Lt.  
E Sta. 134+99.89  
OK

N 10° 08' W.  
E C.R. 130

R/W Mon. Fd.  $\circ$   
29.94' Lt.  
E Sta. 129+99.89  
OK

R/W Mon. Fd.  $\circ$  30.01' —  $\triangle$  — 30.01' —  $\circ$  R/W Mon. Fd. 125+00 (Top Broken)

P.I. 120+00  
RR Spike set

INDEXED ON MAP  
9402

FB 711

C.P. 130  
Sta. 125+00 to C.P. 37  
Harrison Twp, Logan Co., Ohio

161+58.04 - P.I. - R.E. Spike  
set

$2^{\circ}49'03.4''$  Rt.

Curve Data

$\Delta = 2^{\circ}49'03.4''$  Rt.

$P_a = 1^{\circ}$

$R = 5729.58'$

$T = 140.91'$

$L = 281.76'$

$L.C. = 281.73'$

P.C. = Sta. 140+17.13

P.I. = Sta. 161+58.04

P.T. = Sta. 142+98.89

3658.04'

INDEXED ON MAP  
9482

C. Nichols  
C. Dill  
B. Simmons

March - May 01

55

P.I.  $\rightarrow$   
161+58.04  
R.E. Spike set  
 $2^{\circ}49'03.4''$  Rt.

C.P. 577

○ R/W Mark. Fd.  
29.79' Rt.  
E Sta. 160+46.11  
(Top Broken)

R/W Mark. Fd. ○  
30.12' Lt.  
E Sta. 154+99.28  
OK

○ R/W Mark. Fd.  
29.96' Rt.  
E Sta. 154+99.13  
(Top Broken)

R/W Mark. Fd. ○  
30.21' Lt.  
E Sta. 149+99.38  
OK

○ R/W Mark. Fd.  
29.71' Rt.  
E Sta. 149+99.38  
OK

E C.P. 130 T  
N. 10°-08' W

FB 711

C.R. 130  
Sta. 125+00 to C.R. 37  
McArthur Twp., Logan Co., Ohio

177+3.31 - P.I. - R.R. Spike  
set - Intersection of C.R. 130  
w/ E.C.R. 39  
No Angle

1605.33'

141+58.04 - P.I. - R.R. Spike  
set.

2° 49' - 03.4" Rt.

INDEXED ON MAP  
9402

C. Nichols  
C. Dill  
B. Simmons

March - May 01

56

P.I. →  
177+3.31  
R.R. Spike set  
No Angle

C.R. 39

○ R/W Mark. Fed.  
29.55' Rt.  
E. Sta. 175+99.16  
OK

○ R/W Mark. Fed.  
30.45' Lt.  
E. Sta. 147+99.35  
(Top Broken)

E.C.R. 130  
N 79° 13' - 56.6" W

○ R/W Mark. Fed.  
29.54' Rt.  
E. Sta. 147+99.03  
(Top Broken)

○ R/W Mark. Fed.  
30.09' Lt.  
E. Sta. 142+96.09  
OK

○ R/W Mark. Fed.  
29.95' Rt.  
E. Sta. 142+96.21  
OK

P.I. →  
141+58.04  
R.R. Spike set  
2° 49' - 03.4" Rt.

FB 711

C.R. 130

Sta. 125+00 to C.R. 37  
McArthur Twp., Logan Co., Ohio

207+58.40 - P.I. - R.R. Spike  
Set - Intersection & C.R. 130  
w/ & T.R. 56 - No Angle

206+50.65 - P.I. - R.R. Spike  
set - Intersection & C.R. 130  
w/ & T.R. 56 - No Angle

189+41.02 - P.O.T. - Mang Nail Set

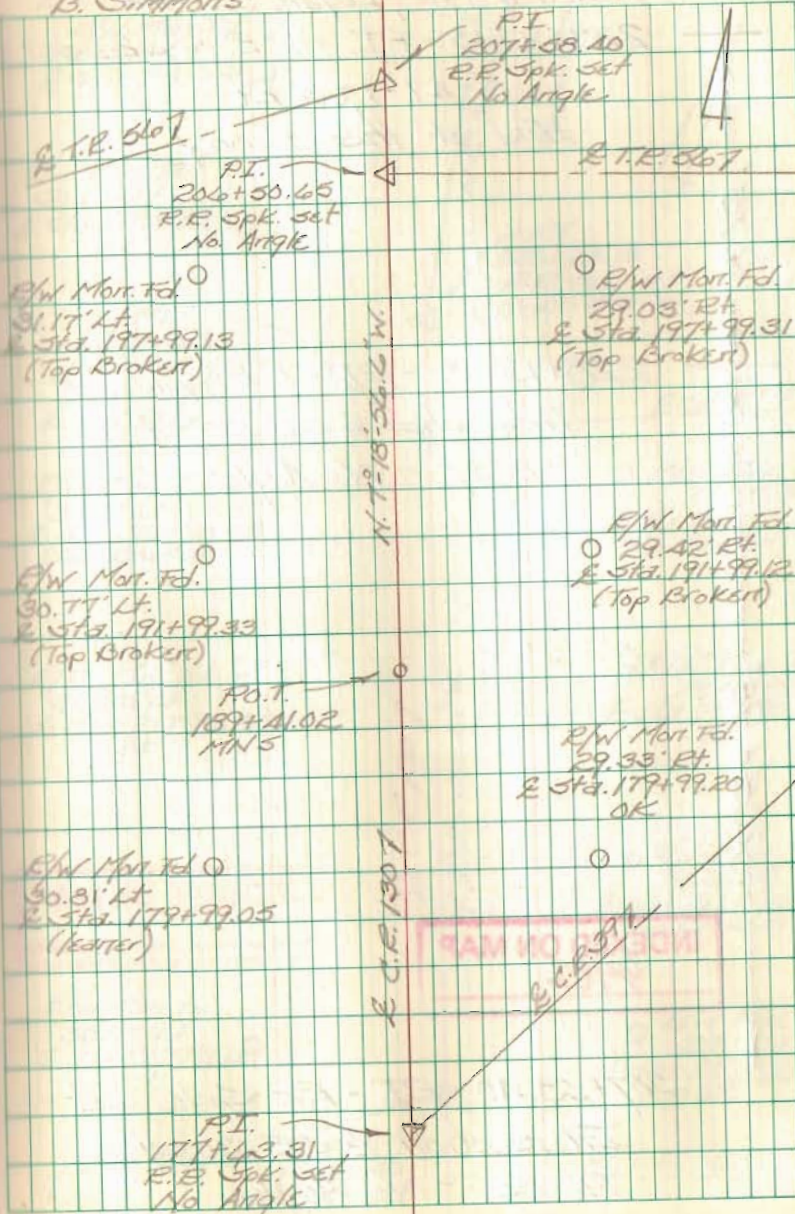
INDEXED ON MAP  
9402

177+43.31 - P.I. - R.R. Spike set -  
Intersection & C.R. 130 w/  
& C.R. 39 - No Angle

C. Nichols  
C. Dill  
B. SIMMONS

March - May 01

57



FB 711

C.R. 130  
Sta. 125+00 to C.R. 37  
McArthur Twp., Logan Co., Ohio

228+23.13 - P.I. - R.R. Spike set

0°-47'-17.3" Rt.

End of this Survey

9.75'

228+13.38 - P.I. - R.R. Spike set -

Intersection & C.R. 130 w/ &

C.R. 37 - No Angle

2054.98'

INDEXED ON MAP

9482

207+58.10 - P.I. - R.R. Spike set -

Intersection & C.R. 130 w/ &

T.R. 56 - No Angle

C. Nichols

C. Dill

B. Simmons

March-May 01

58

R/W Mort. Fel.  
30.00' Lt.  
& Sta. 233+98.35  
OK

R/W Mort. Fel.  
30.00' Lt.  
& Sta. 233+98.36  
OK

P.I.  
228+13.38  
R.R. Spk. set  
No Angle  
& C.R. 37

R/W Mort. Fel.  
30.19' Lt.  
& Sta. 221+98.58  
(Top Broken)

R/W Mort. Fel.  
30.95' Lt.  
& Sta. 217+98.83  
OK

R/W Mort. Fel.  
30.77' Lt.  
& Sta. 207+99.13  
OK

R.R. 56 - P.I.  
207+58.10  
R.R. Spk. set  
No Angle

N 4°-31'-37.3" W  
To Mountaineer

P.I.  
228+23.13  
R.R. Spk. set  
0°-47'-17.3" Rt.



& C.R. 37

R/W Mort. Fel.  
29.89' Rt.  
& Sta. 221+99.17  
(Top Broken)

R/W Mort. Fel.  
29.48' Rt.  
& Sta. 217+98.82  
OK

R/W Mort. Fel.  
29.46' Rt.  
& Sta. 212+98.97  
(Top Broken)

R/W Mort. Fel.  
29.13' Rt.  
& Sta. 207+99.21  
OK

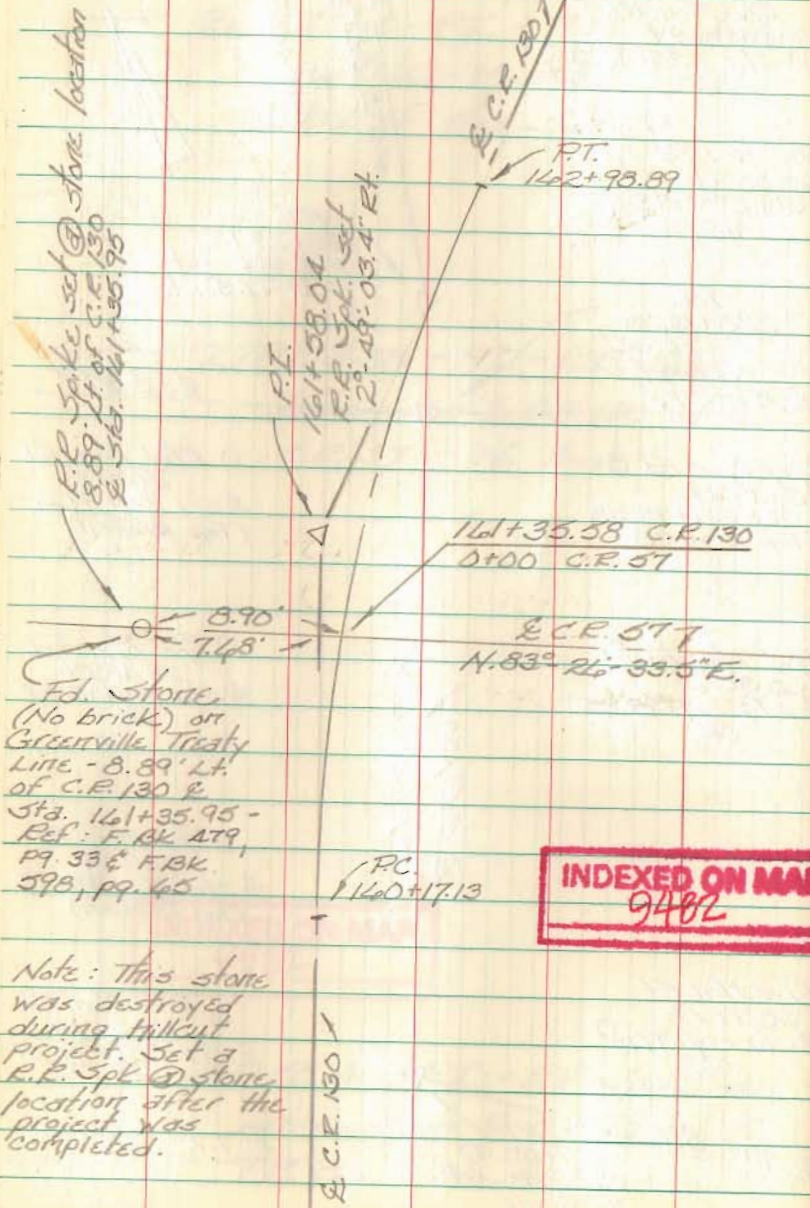
& T.R. 56

& C.R. 130  
N 7°-18'-56.6" W

INDEXED ON MAP

FB 711

Intersection C.R. 130 W/ C.R. 57



Ed. Stone  
(No brick) on  
Greenville Treaty  
Line - 8.89' Lt.  
of C.R. 130 &  
Sta. 161+35.95 -  
Ref: F.Bk. 479,  
pg. 33 & F.Bk.  
598, pg. 45

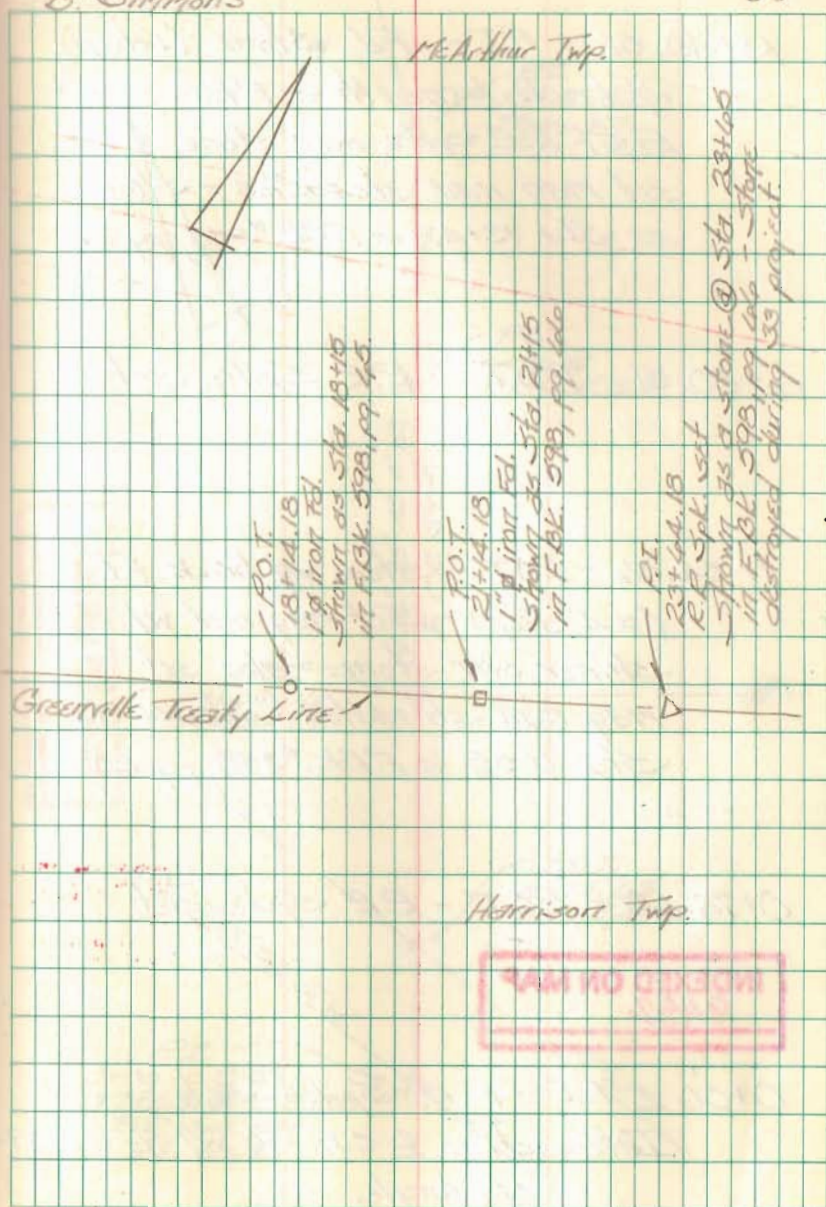
Note: This stone  
was destroyed  
during hillcut  
project. Set a  
R.P. Spt. @ stone  
location after the  
project was  
completed.

INDEXED ON MAP  
9482

C. Nichols  
C. Dill  
G. Simmons

March - May 01

59



McArthur Twp.

Greenville Treaty Line

Harrison Twp.

INDEXED ON MAP

FB 711

Intersection C.R. 130 w/ C.R. 39

13+40.52 - P.I. - Fd Stone (1' deep)  
w/ brick beneath & R.R. Spike -  
Reset R.R. Spike over stone &  
set mag nail straddles - Shown  
as Sta. 13+42 in F.B.K. #358, pg. 21.

4+80.51 - P.O.T. - R.R. Spike set

1+54.06 - P.O.T. - Stone w/ brick fd.  
( $\approx$  4" deep) - Set mag nail w/  
shiner over stone - also set  
mag nail straddles - Shown as  
Sta. 1+55 in F.B.K. #358, pg. 20.

0+73.43 - P.O.T. - R.R. Spike set

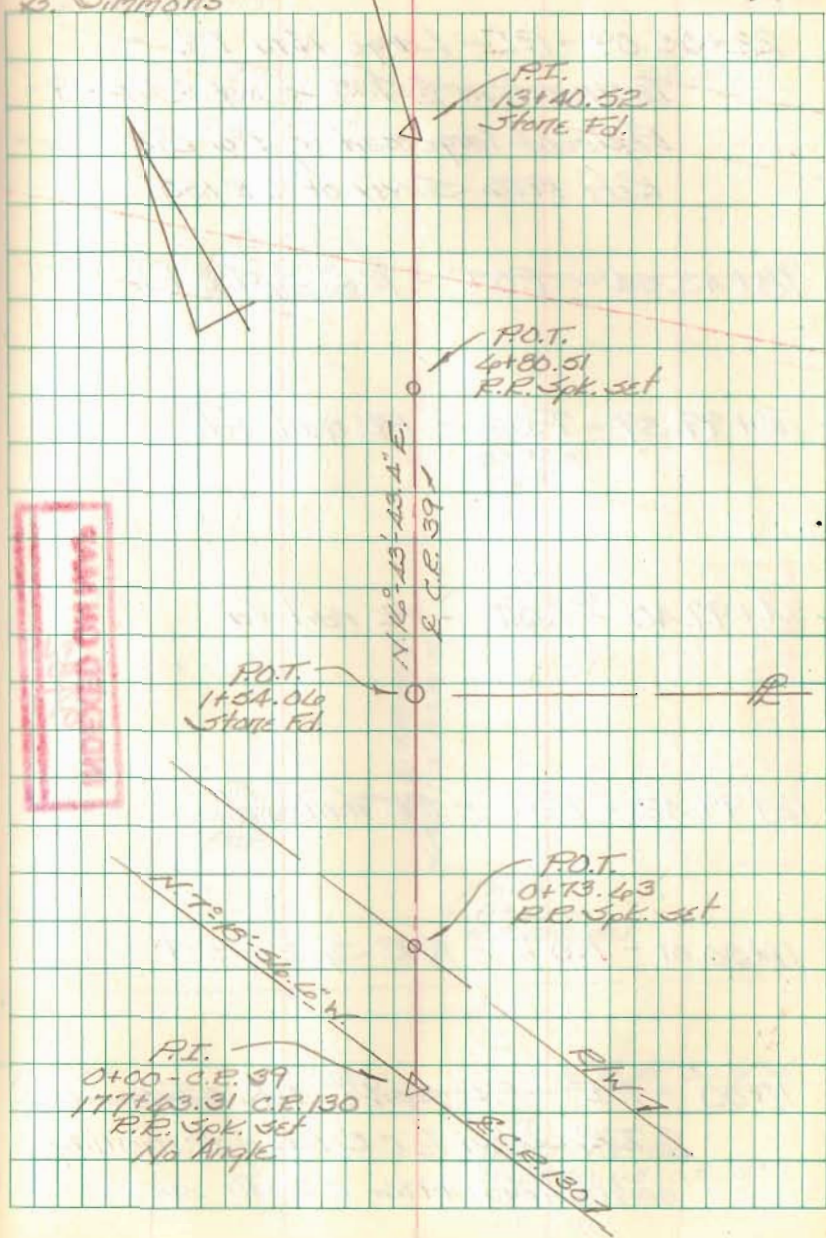
INDEXED ON MAP  
9482

0+00 - P.I. - R.R. Spike set -  
Intersection & C.R. 130 w/ & C.R. 39 -  
No Angle

C. Nichols  
C. Dill  
B. Simmons

March - May 01

60



FB 711

Intersection C.R. 130 w/ T.R. 56

22+05.09 - P.I. - Large Nail Fd. -

Intersection E T.R. 56 w/ E C.R. 39 -

Replaced large nail w/ 1"  $\phi$  dia. iron -

Ref: 1976 Survey of C.R. 130

18+43.54 - P.O.T. - R.R. Spike fd.

15+99.39 - P.O.T. - PK nail fd.

14+99.40 - P.O.T. - PK nail fd.

12+99.42 - P.O.T. - PK nail fd.

11+30.01 - P.O.T. - R.R. Spike set

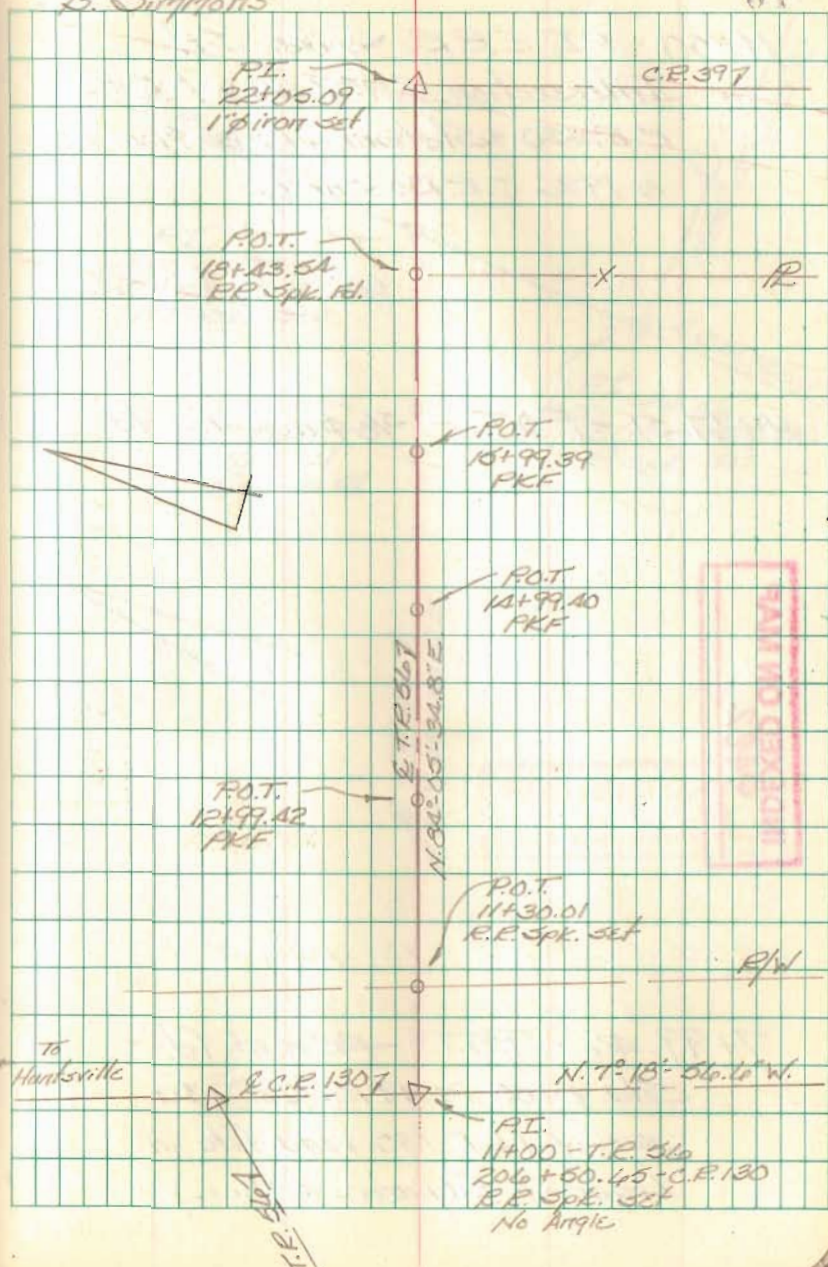
11+00 - P.I. - R.R. Spike Set - Intersection  
E T.R. 56 w/ E C.R. 130 - Stationing  
comes from a 1976 C.R. 130 survey

INDEXED ON MAP  
9482

C. Nichols  
C. Dill  
B. Symmonds

March - May 01

61



INDEXED ON MAP



FB 711

Intersection C.R. 130 w/ T.R. 56

11+00 - P.I. - R.R. Spike Set -

Intersection E.T.R. 56 w/ E.

C.R. 130 - Stationing comes from

a 1976 C.R. 130 Survey.

10+47.51 - P.O.T. - 5/8"  $\phi$  dia. iron fd.

INDEXED ON MAP  
9482

7+99.46 - P.O.T. - PK mail fd. -

Sta. 8+00 in 1976 C.R. 130

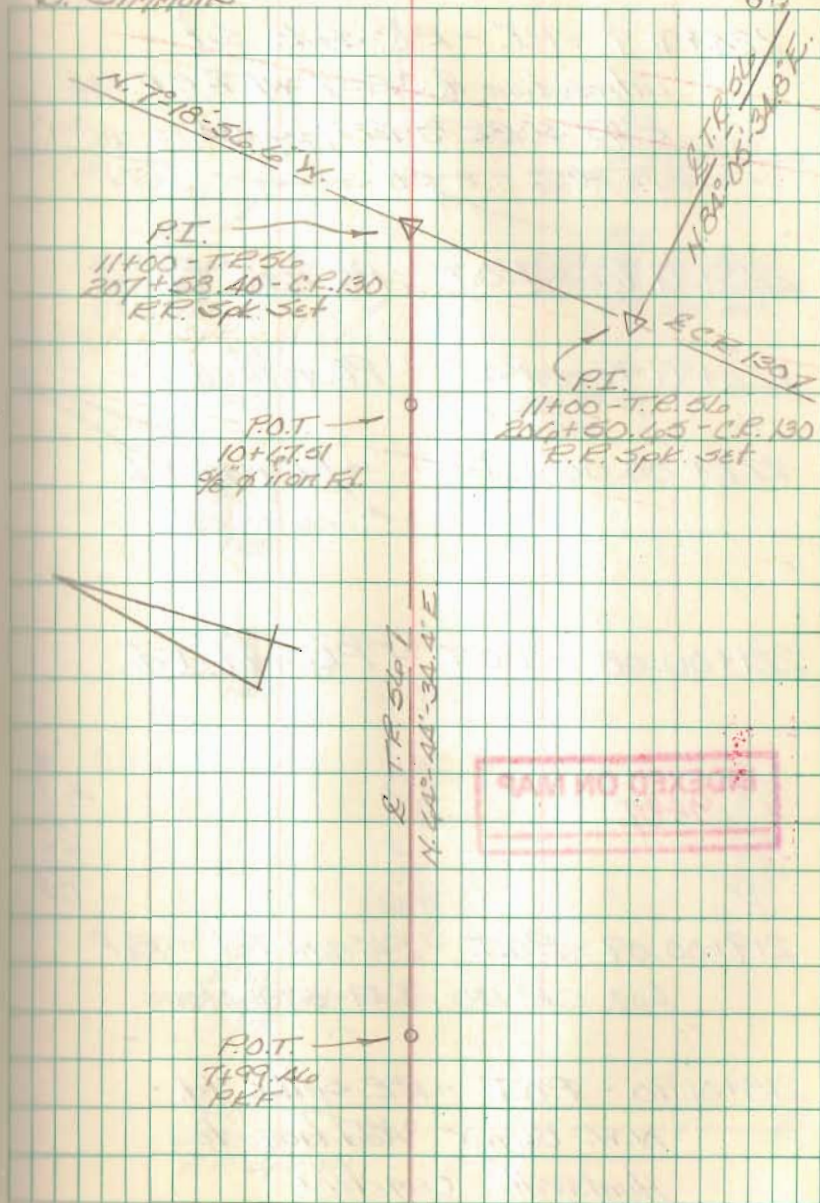
survey (C.R. 130 road file in

Logan Co. Engineer's Office).

C. Nichols  
C. Dill  
D. Simmons

March - May 01

62



INDEXED ON MAP

FB 711

Intersection C.R. 130 w/ C.R. 37

224+91.9 - P.I. - R.R. Spike Set -  
Intersection of C.R. 37 w/ E C.R. 130 -  
Ref: F.B.K. # 577, pg. 3A.

223+99.96 - P.O.T. - PK nail Fd.

222+99.99 - P.O.T. - PK nail Fd.

222+00.06 - P.O.T. - PK nail Fd.

221+00.08 - P.O.T. - PK nail Fd.

INDEXED ON MAP  
9482

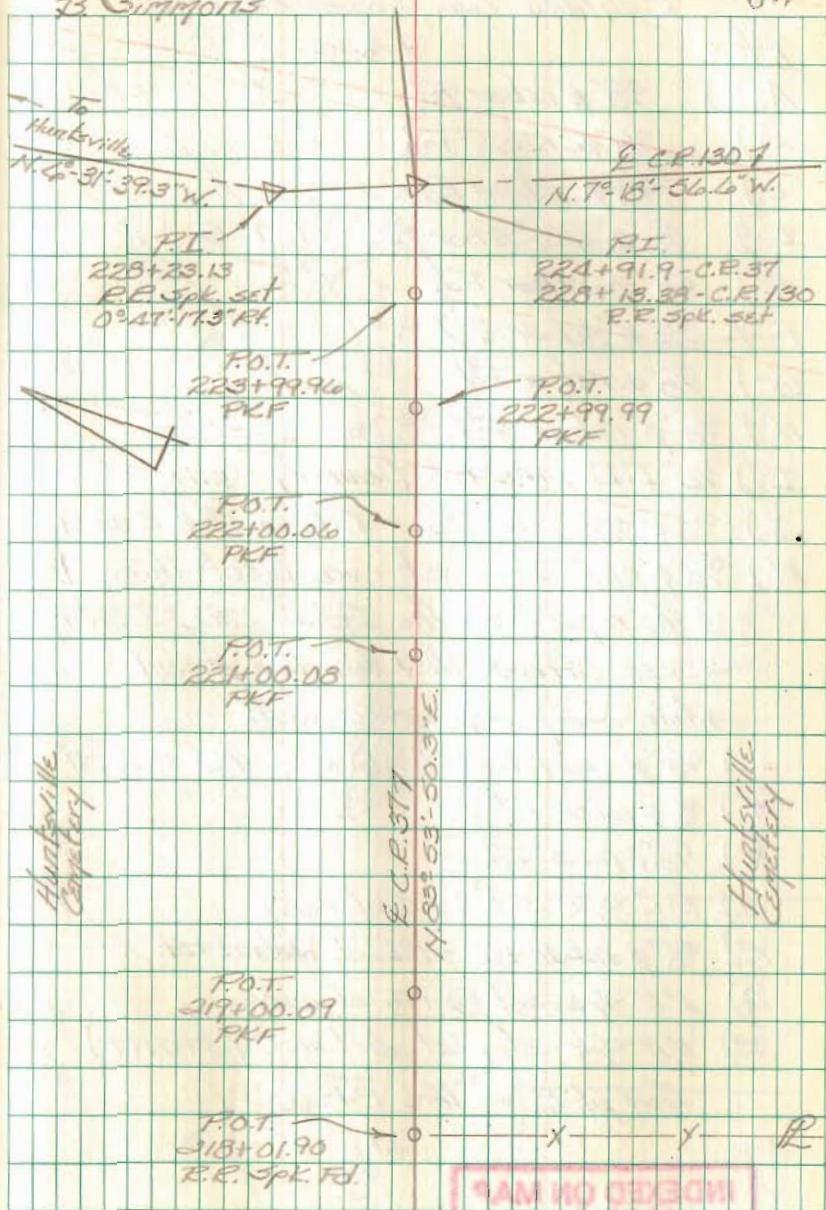
219+00.09 - P.O.T. - PK nail Fd. - Ref:  
Log. C.R. 130 (5.49-5.73) plans

218+01.90 - P.O.T. - R.R. Spike Fd. -  
N.W. Corner Addition to  
Huntsville Cemetery

C. Nichols  
C. Dill  
B. Simmons

March - May 01

63



INDEXED ON MAP  
9482