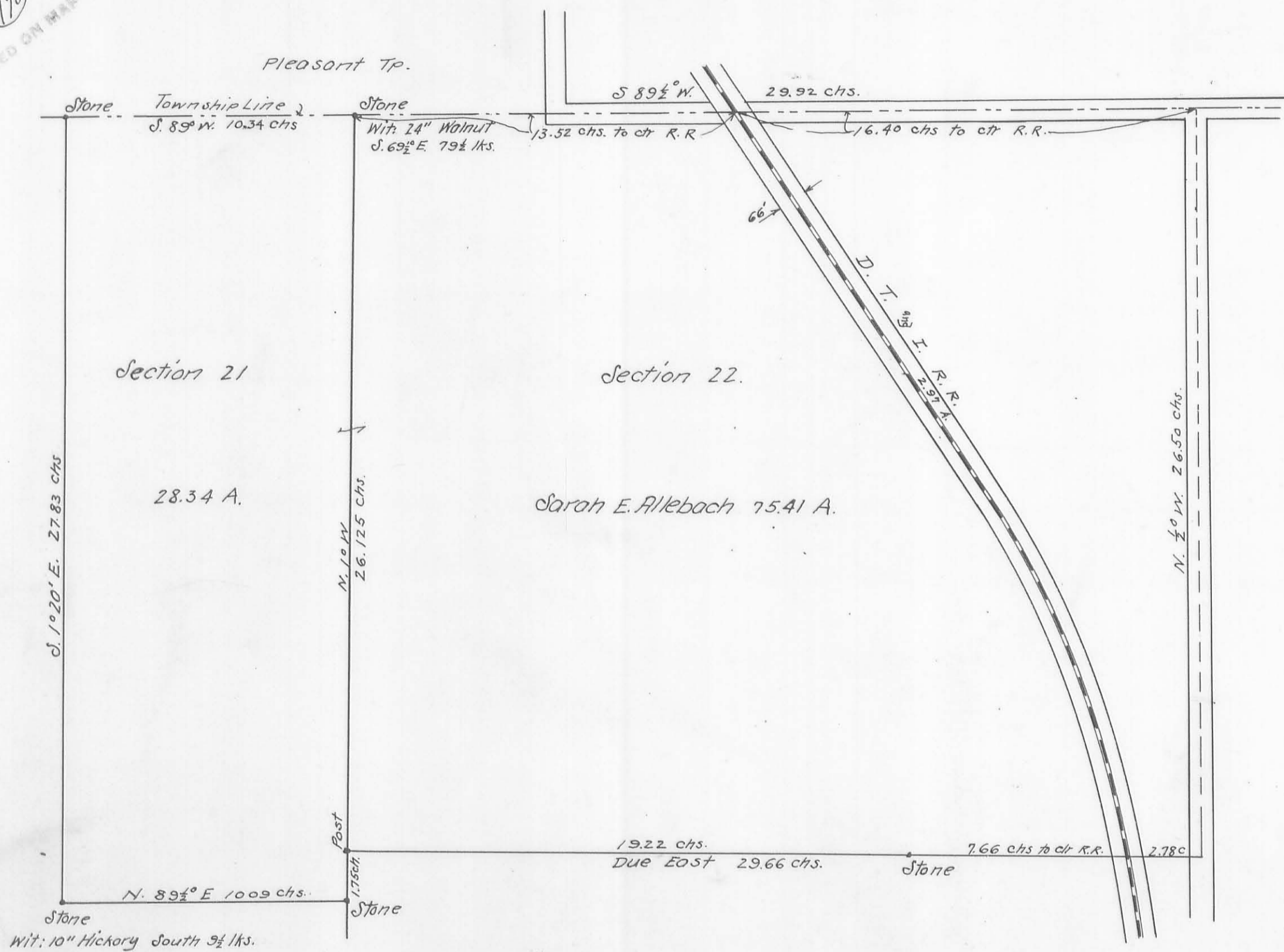


(170)
INDEXED ON MAP



Pts. Secs. 21 & 22, T. 1, R. 8, Miami Tp.
 Sarah E. Allebach Estate
 Surveyed for Elmer Polk Adm.

Aug. 1909

Charles M. Richey
 County Surveyor

Marion Glessner } Ch. cr.
 O. C. Richey }

Wm Wert } Flagman.
 Elmer Polk. }