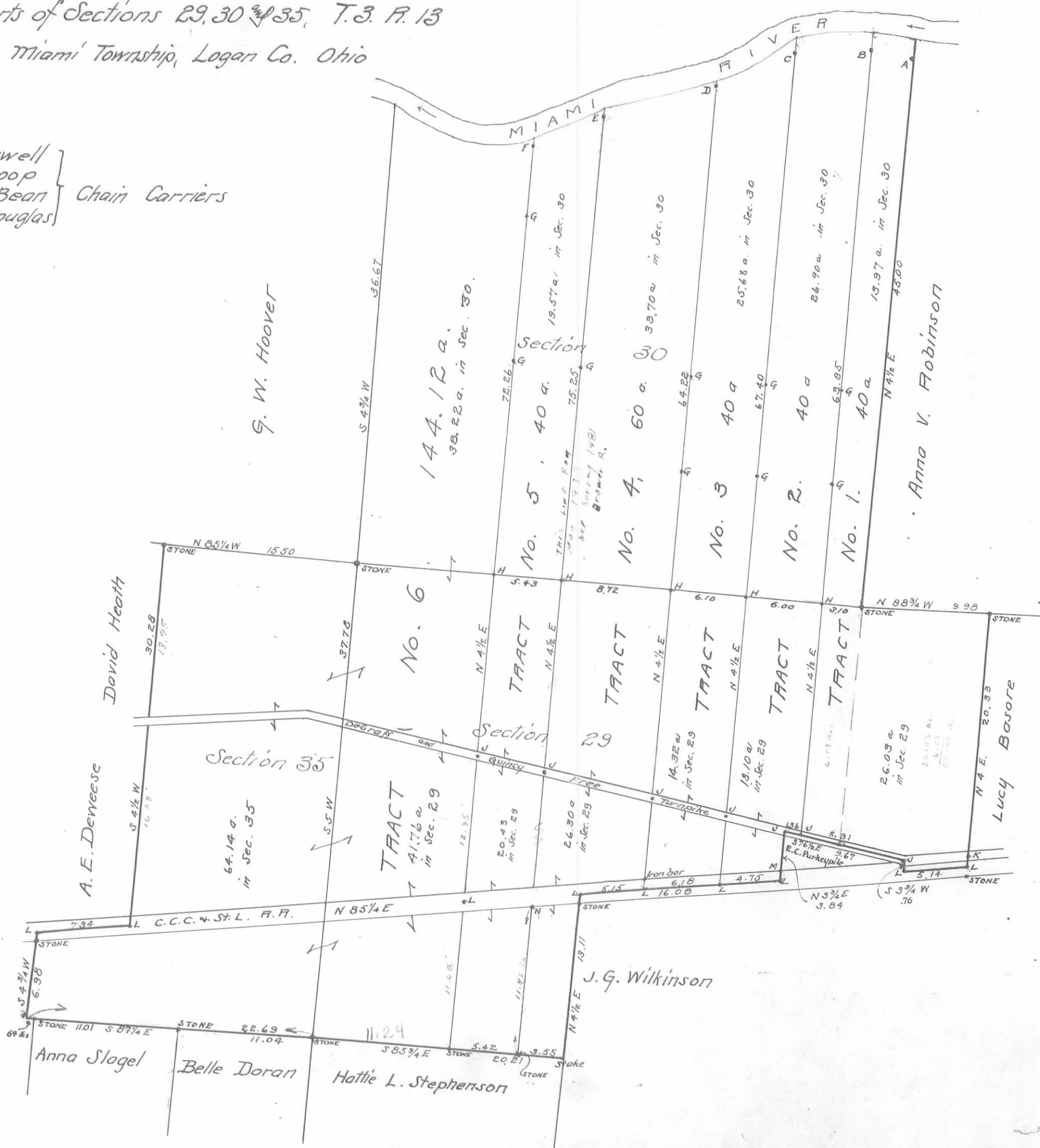


Surveyed for —
Heirs of E.S. Baughman.

Parts of Sections 29, 30 & 35, T.3. R. 13
Miami Township, Logan Co. Ohio

(178)
INDEX MAP

Earl Newell
J. S. Kroop
Wm. H. Bean } Chain Carriers
Elmer Douglas }



Description of Monuments.

- A. Line passes at east side of 30" hackberry
- B. - Stone - Wit: - 12" white walnut, N 60 1/2 W, 13 lbs
12" white elm N 19 3/4 E, 40 lbs
- C. - Stone - Wit: - 14" hackberry S 57 W 17 lbs
17" black hickory N 75 E, 22 lbs
- D. - Stone - Wit: - 13" white elm N 41 E, 16 lbs
10" black hickory N 50 W 6 lbs
- E. - Stone - Wit: - 26" sycamore N 21 1/2 E 84 lbs
17" white elm N 22 W 68 lbs
- F. - Stone - Wit: - 18" sugar N 25 E 51 lbs
22" black walnut S 25 1/2 E 80 lbs
- G. - Iron bars in line
- H. - Iron bars near Section line
- J. - Iron bars in center of DeGraff & Quincy Free Turnpike
- K. - Stone in center of pike
- L. - Iron bars in center of C.C.C. & St. L. R. R.
- M. - Stone in north line of rt-of-way

Scale of Plot, 1 inch = 8 chains

Total acreage by Sections

Section 29 = 141.94 acres
 " 30 = 158.04 "
 " 35 = 64.14 "
 Total, Entire estate = 364.12 "

Surveyed as shown above.
July and August 1911

Harry D. Daily
Deputy County Surveyor

Miami Township

9, 10, 11

Tract No. 1- Being a part of Sections 29, 30 and 35, Township 3, Range 13 being Tract No. 6, as shown on the recorded plat of E. S. Baughman's land on page 25, Vol. D of the Records and Surveys in the County Surveyor's office, Bellefontaine, Ohio, and bounded and described as follows: Commencing at a stake at Miami River in the West line of Section No. 30 from which a 30-inch beech bears South $4\frac{3}{4}$ deg. West 1.66 chains distant; thence with said Section line South $4\frac{3}{4}$ deg. West (passing said beech at 1.66 chains 36.37 chains to a stake at the Southwest corner of said section No. 30; thence with the North line of section 35 North $85\frac{1}{4}$ deg. West 15.50 chains to a stone at the Northeast corner of David Heath's land; thence with said Heath's East line, South $4\frac{1}{2}$ deg. West crossing the center of the DeGraff and Quincy free turnpike at 13.95 chains, and continuing same course (South $4\frac{1}{2}$ deg. West) with the east line of A. F. DeWeese's land ^{110.78} 16.83 chains to an iron bolt in the center of the C. C. C. & St. L. Railroad; the total length of this line being ^{1998.48} 30.28 chains; thence with the center of said railroad South $85\frac{1}{2}$ deg. West ^{484.44} 7.34 chains to an iron bolt; thence with the East line of Lewis T. Haines' land South $4\frac{3}{4}$ deg. West ^{460.68} 6.98 chains to an anchor post, passing a stone in the South line of the railroad right of way at ^{50.16} 76 links; thence South $87\frac{1}{2}$ deg. East ^{1497.54} 22.69 chains to a stone in the Northwest corner of Hattie L. Stephenson's land (passing a stone at the Northwest corner of Anna Slagel's land at ^{422.44} 64 links) and passing a stone at the Northwest corner of Belle Doran's land at ^{768.90} 11.65 chains; thence with the North line of said Stephenson's land, South $85\frac{3}{4}$ deg. East ^{741.84} 11.24 chains to a stone; thence North $4\frac{1}{2}$ deg. East ^{4769.16} 72.26 chains to the Miami River (passing an iron bar in the center of said railroad at ^{170.88} 11.68 chains) passing an iron bar in the center of the aforesaid pike at ^{1556.94} 23.59 chains) and passing a stone at 71.52 chains from which an 18 inch sugar bears North 25 deg. East 51 links distant and a 22 inch black walnut bears South $25\frac{1}{2}$ deg. East 80 links distant thence Northwesterly with said river to the place of beginning, containing 144.12 acres of which 41.76 acres are in Section 29; 38.22 acres in Section 30 and 64.14 acres in Section 35.

Tract No. 2--Being part of Sections 29 and 30, Township 3, Range 13 and being tract No. 5 as shown on the recorded plat of E. S. Baughman's land on page 25, Vol. D of the Records of Surveys in the County

178
INDEXED ON MAP
1D-1

Surveyor's office, Bellefontaine, Ohio, and bounded and described as follows:

Commencing at a stone in the South line of the Northwest Quarter of said Section 29, ^{254.5} 3.55 chains west from the West line of J. G. Wilkinson's land; thence North ^{496.50} $4\frac{1}{2}$ deg. East 75.25 chains to the Miami River (passing an iron bar in the South line of the right of way of the C.C.C. & St. L. Railroad at ^{752.40} 11.40 chains) (passing an iron bar in the center of the DeGraff and Quincy Free Turnpike at ^{1497.54} 22.69 chains) and passing a stone in line at 74.56 chains, from which a 26 inch sycamore bears North $21\frac{1}{2}$ deg. East 84 links distant and a 17 inch white elm bears North 22 deg. West 68 links distant; thence Southwesterly with said River to a stake 5.43 chains distant at right angles from the line last above described; thence South $4\frac{1}{2}$ deg. West 72.26 chains to a stone in the South line of the said Northwest Quarter as said Section No. 29 (passing a stone in line at 7.4 links from which an 18 inch sugar bears North 25 deg. East 51 links distant and a 22 inch black walnut bears South $25\frac{1}{2}$ deg. East 80 links distant (passing an iron in the center of the aforesaid pike at 48.67 chains) passing an iron bar in the center of the above mentioned railroad at 60.58 chains; thence with said South line South $85\frac{3}{4}$ deg. East 5.42 chains to the place of beginning, containing 40 acres of land of which 20.43 acres are in Section 29, and 19.57 acres are in Section 30. Containing in all 184.12 acres, more or less. Being a part of the premises conveyed to the Union Central Life Insurance Company by Deed from the Avon Construction Company, by Hiram C. Bolsinger, President and Jack Brand, Treasurer, dated Sept. 1, 1932, recorded in Volume 140, Pages 518-520, of the Records of Logan County, Ohio, and all the estate, title and interest of the said The Union Central Life Insurance Company either in law or in equity, of, in and to the said premises: together with all the privileges and appurtenances to the same belonging, and all the rents issues and profits thereof; to have and to hold the same to the only proper use of the said Russell Stewart and Mary Stewart, their heirs and assigns forever.

178
INDEXED ON MAP
1D-2

Rec'd 6-5-02 SMY OK

LISA A. BAMBAUER SURVEY
22.952 ACRES
May 29, 2002

The following described 22.952 acre tract of land is situated in Sections 29 and 30, Town 3, Range 13, Miami Township, Logan County, Ohio and being part of Lisa A. Bambauer and M. Ogreta Bambauer's Tract No. 1, originally 144.12 acres, and Tract No. 2, originally 40.0 acres, described in Official Record 198, page 443, said 22.952 acre tract more particularly described as follows:

Beginning at a 5/8 inch iron pin found at the intersection of the centerline of County Road 70 (60 feet wide) with the east line of said original 40.0 acre tract and the west line of Ronald K. and Marguerite Bell's 60.514 acre tract described in Official Record 547, page 617;

Thence **North 76°25'01" West 594.17 feet**, following the centerline of County Road 70, crossing said original 40.0 acre tract and entering said original 144.12 acre tract, passing a 5/8 inch iron pin found at 362.66 feet, to a railroad spike set;

Thence **North 4°30'00" East 1656.29 feet**, departing from the centerline of County Road 70, passing an iron pin set at 30.19 feet, leaving said Section 29 and entering said Section 30, to an iron pin set;

Thence **South 85°30'00" East 586.72 feet**, leaving said original 144.12 acre tract and crossing said original 40.0 acre tract, to an iron pin set in the west line of said 60.514 acre tract;

Thence **South 4°30'00" West 179.67 feet**, following the east line of said original 40.0 acre tract and the west line of said 60.514 acre tract, to a 5/8 inch iron pin found at the northwest corner of Ronald K. and Marguerite Bell's 5.22 acre tract described in Deed Volume 333, page 494;

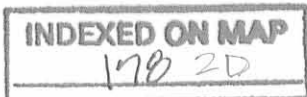
Thence **South 4°26'45" West 661.06 feet**, following the east line of said original 40.0 acre tract and the west line of said 5.22 acre tract, leaving said Section 30 and entering said Section 29, to a 5/8 inch iron pin found at an angle point in the west line of said 60.514 acre tract;

Thence **South 4°32'22" West 909.36 feet**, following the east line of said original 40.0 acre tract and the west line of said 60.514 acre tract, passing an iron pin set at 878.98 feet, to the **place of beginning, containing 22.952 acres**, more or less, and subject to all valid easements and restrictions of record.

Of the above described 22.952 acre tract, 0.408 acre is within the road right-of-way of County Road 70, 10.255 acres are within said Section 30, of which 4.001 acres are part of said original 144.12 acre tract and 6.254 acres are part of said original 40.0 acre tract, and 12.697 acres are within said Section 29, of which 4.787 acres are part of said original 144.12 acre tract and 7.910 acres are part of said original 40.0 acre tract.

The above description was prepared from an actual field survey made by George A. Blackburn, Registered Surveyor #7873, during the month of May 2002. Iron pins set are 5/8 inch by 30 inch reinforcing rods with plastic caps marked "Blackburn RS #7873." Bearings indicated herein are based on the centerline of County Road 70 (60 feet wide) being North 76°25'01" West.

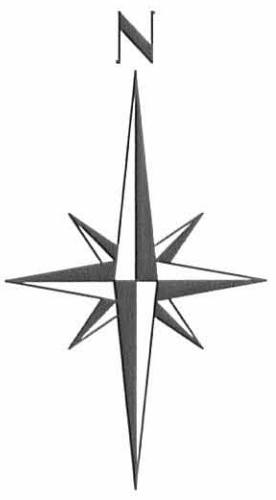
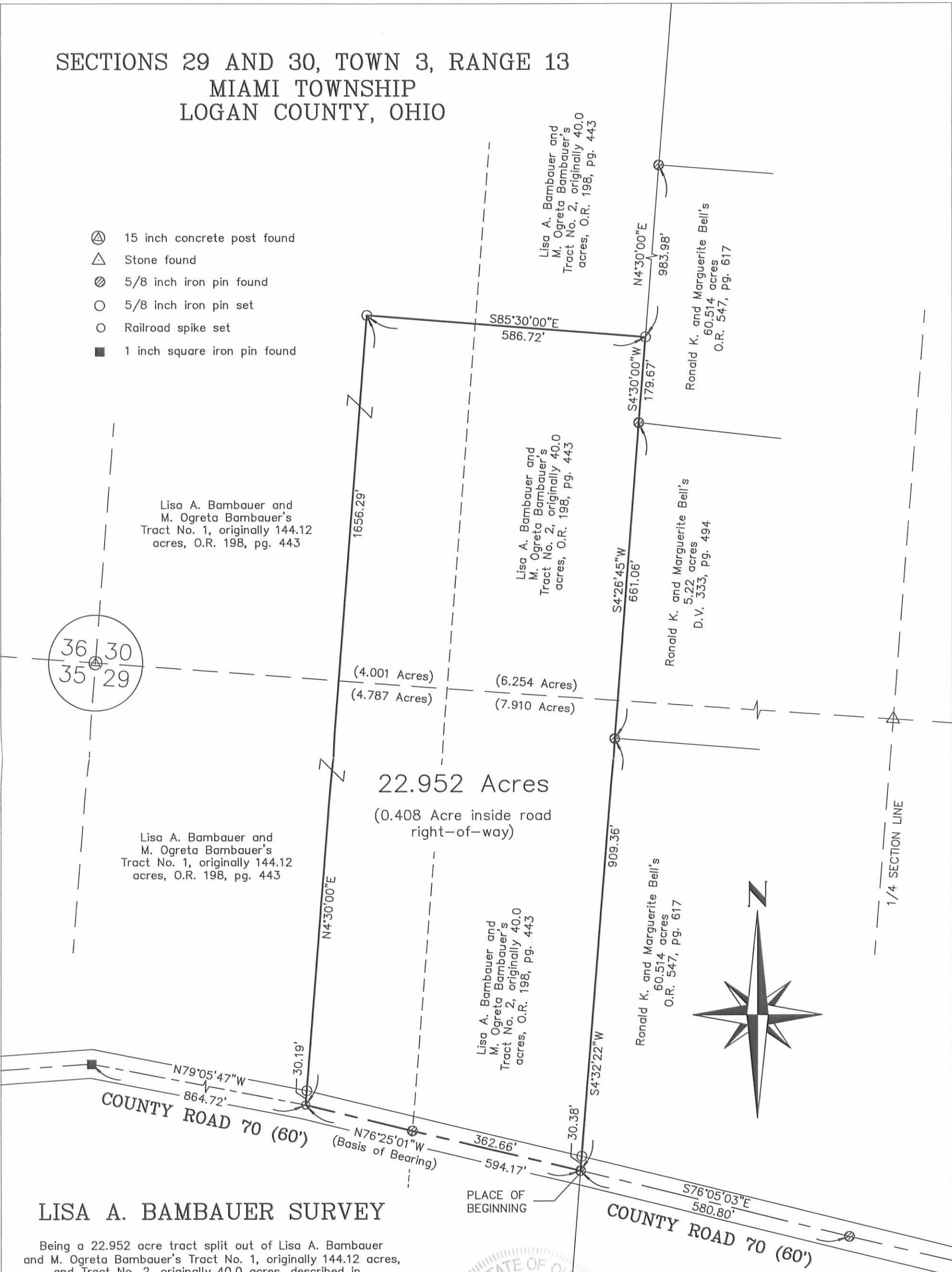
Description prepared by: George A. Blackburn
George A. Blackburn, R.S. #7873
12125 Green Street
Middleburg, Ohio 43336
(937) 666-5605



RED 6-5-02 SMY BK

SECTIONS 29 AND 30, TOWN 3, RANGE 13
MIAMI TOWNSHIP
LOGAN COUNTY, OHIO

- ⊙ 15 inch concrete post found
- △ Stone found
- ⊗ 5/8 inch iron pin found
- 5/8 inch iron pin set
- Railroad spike set
- 1 inch square iron pin found

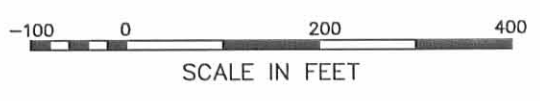


LISA A. BAMBAUER SURVEY

Being a 22.952 acre tract split out of Lisa A. Bambauer and M. Ogreta Bambauer's Tract No. 1, originally 144.12 acres, and Tract No. 2, originally 40.0 acres, described in Official Record 198, page 443.

I hereby certify that this plat was prepared from an actual field survey and that monuments were placed as indicated hereon.

George A. Blackburn
George A. Blackburn, R.S. 7873



INDEXED ON MAP
178 2P

Filename: Bambauer 5-02
Scale: 1" = 200'
Date: 5/29/02
F.B. 7, pg. 67

BLACKBURN SURVEYING
12125 GREEN STREET
MIDDLEBURG, OHIO 43336
(937) 666-5605

56
Baughman Surv.

June 22 1911

Carl Newell / de. cr.
J.S. Knapp

B.S.L. transit

Start at Stone (supposed to be W.
line Quisen Corp.) at S. line
Big 4, Rt. of way, at N 2 & 13,
Rehook White.

Set west 8' N 3 3/4 E

0+76, 0 Main track Big 4

1.49 0 pile
1.85 1/2 s. side anchor post SW of Basora

31.09 Stone in Sec. line bet 29 & 30,
in S. line Robinson & NW of Basora

p+52 Set pointed boulder in pile
at rt. of way line, & surrounded
same bunch several feet.

W.D.

SW of siding, Basora vs. N 89 E, 113 1/2 ft.

Corrected Cse this line →
= N 4 1/2 E (near)

170

with line Sec 29 & 30

N 88 3/4 W

10.00 stone, SW of Robinson.

with W. line Robinson

Random. Set 16' W N 5-E

27.49 random is 13' W of 0 on fence
at top of hill. Stake in random

27.40 pulled left 1° 15'

23.4 stake in random 20' from 0
at rail base

44.03 30" Hackberry in line.
Random corner 19' W of west side
of track.

45.00 S. edge of H.O. Miami River

the fence line runs to E. side of Hackberry
which is established as E. line Baughman

Along Miami River

Start meas. at E. side of
Hackberry of line on job 57.

Offset 150 ch. S of river to give
clear of brush

chain on random N 86 W

809, set stake in random
170 from water's edge

S 66 1/2 + W

12.15 set stake 45 lks from
water's edge

S 72 - W

20.00 stake in random 41 lks from H₂O
25.26 " " " 90 " " "

S 66 3/4 + W

30.00 stake in random 15
32.00 " " " 16 from H₂O

S 88 1/2 W

37.03 stake in random

N 61 W

43.33 = 2 lks N. of \odot 30" brack
on W. line of Sec 30.

This brack is on line with av.
rail fence south & is 166 lks
S. of river.

Along W. line Sec 30.

Start at river. Follow old
rail fence row as far as can.

Random S 5 W

at 22.15 random = 16 lks W of fence

$$\frac{.16}{22.15} = .0072 = \text{Tan } 25'$$

Corrected Cce = S 4 1/2 + W

166 30" brack (See opp page)

22.15 S 5 W [wire fence]

36.67 ston < Secs 29, 30, 35, 36

Along line Sec 35 and 36

N 85 1/4 W

15.50 stone at NE² Neath

— Along E. line Howard

S 4 1/2 W

15.95. \odot Quincy \odot Sidney pike
(dug for stone - see find)

Cse pike . N 84 E

30.28 drove iron bolt with 2
nuts on end in \odot Big 4 R.R.

— with \odot R.R.

S 85 + W

7.34 Drove bolt, \odot track
in line with wire fence S,
[stone in fence line at S. line
H-of-way]

(Cse along R.R. taken, in field
25' S. of H-of-way fence)

— with E. line Haines

S 4 3/4 W

6.98 anchor post in N. line Hill

S 87 1/4 E

0.64 stone set by J. Wonders at
NW \angle Slagel

11.65 stone set by J. W. NE \angle Slagel

22.69 stone NW \angle Stephenson

S 86 - E

42.90 temporary stake in hedge line
near NE \angle Stephenson

Edward Baguleware and Jas. Wilkinson
state that this hedge was put in line of
old rail fence. This line has been
occupied to for 35 years at least.

June 26. 1911

Same chainmen

- N 4 1/2 E with hedge.

12.34 5 line fence Big 4 Pt. of way

13.105 iron bolt with nut O. R. R.

at 12.34 set stone with X +
jcs brickbats

with Big 4 R.R.

N 85 E

15.99 Kiel mark on R.R. Ho.

16.08 Drive $\frac{1}{2}$ " iron bar in \odot tract.

- N 83/4 E

0.76 set stone with x on top of flag
brickbat for sec \leftarrow Purkeypile
or N. rt. of way from

3.84 drive $\frac{1}{8}$ " var, \odot pike, NW \leftarrow
Purkeypile.

with \odot pike S 76 1/2 E

0.41 \odot stone and culver

0.64 Y.M. Costr Ditch

9.67 Drive $\frac{7}{8}$ " var \odot pike at
 \leftarrow in pile, @ 50' at 'rt. L' from
 \odot Main track Big 4

See page 67 for notes
as to culvert.

- S 83/4 W

0.765 drive iron bar \odot track

170

- with a track N 85 E

5.14 Drive $\frac{3}{4}$ " bar in O track
at 0.76 of line #1

Notes for culvert at 0.41
line #1 page 65.

Cyrus Kirk's deed calls for "branch"
then due South to R.R. line.

J. H. Casorey stated they did not
John W. Coart know of any change
James Patton } of location the branches
for the past 30 or 35
years, but that the
present stone culvert is to the best of
their recollection in the same location
as previous buldgs.

J. W. Wilkinson at Miami Valley Bank
(Quincy) had memory this country
all his life. He stated that when
he was a boy he recalled seeing
some indication of a channel or
branch just west of the present location.

E. C. Purkaystille stated that some of
the older residents years ago referred
to a certain lagoon that was standing in
west bank of old creek. He also
stated that E. S. Boughlumen recognized
a point near a certain fence post
at R.R. fence as on the correct line.

Set stone at east side of this post.
a run N $3\frac{1}{2}$ E & 200 feet
S of the west of O side culv. a post
about 1 mile east of old lagoon slumps

178

E. P. Baughman Survey

Check records near etc.
 Judge 21-1951

Start line as set (p. 56) at SW L
 corner N 45°

19.60 stone NW corner

N 88 1/2° W

9.98 stone

Continuing west along Sec line

Set S. 85° Random

N 87° W

at 40.66 Curve 35' + 66' = 101'
 Southing = 66' = 1 chain

140.66 11.5000 | 0.242 = 1° 25'

8132

18680

16264

24944

N 87° W

1° 25'

Corrected Cse = ⁸⁵ ³⁵ N 85 1/2° W

Set W. 14° Random

S 5° ± W

12.57 O. pike

27.80 O Big 4 RR

37.78 Stone & Stephenson & Down
 Cre. 55° W

Additional Measurement along Big 4

Start iron bar O R.R. at extreme
 west line Baughman. Meas. E

7.34 iron bolt OK

22.99 [Sec. line, Sec 29 & 35
 = 27.80 near top of this page]

83.55 bolt NW L Wilkinson

69.27

89.62 bar SW L Parkersdale

59.65

69.27 bar

2.65

74.41 bar on E. line

178

Aug. 2 - 1911

E. S. Baughman

Division of Game

Start at stone, SW of Robinson

- (Random) on or near line
Int. Sec. 29 & 30

N 85 1/2 W

3.10 - stake, iron bar, w. line

of 13⁰ 40 a

NW 1/4 = 89° 32'

9.10 - stake & iron bar, w. line 2⁰ 40 a

(N. P. or S. O. needle = N 85 W)

(Cross game at Sta. 0.)

15.21 - stake, stake, w. line 3⁰ 40 a

23.73 - stake - w. line 60 a

29.36 - stake - w. line 40 a

E. S. Baughman
Chain carrier

Earl Newell

J. S. Knook

Wm. H. Bean

Elmer Douglas

W. side of East 40 a
start at 3.10 of line, page 70.

Random. N 4 1/2 E
NWS with sec line = 87° 52'

9.41 Stake in random

17.00 " " "

26.00 " " "

36.00 " " "

44.00 stake = 3.19 - W. of E. side backbay

45.00 water edge Main River

Easting at 44.00 ch = 3.19 - 3.10 = .09 lks

(See 4403 page 57)

Easting = 1 lks for each 5 chains.

Corrections:

9.41, set east,	$9.41 \div 5 =$	2 links
17.00 " "	$17.00 \div 5 =$	3 1/2 lks
26.00 " "	$26 \div 5 =$	5 1/5 lks
36.00 " "	$36 \div 5 =$	7 1/5 lks
44.00 " "	$44 \div 5 =$	9 -

44.50 set blue boulder with X on top, 3.10 ch. v.

of backbay

12" white Walnut N 60° W 13 lks
12" white Elm N 93° E 40 lks

Measure from stake at 36.00 opp page
4.32 ch. $36.00 - 4.32 = 31.68,$

rail fence, set iron bar in correct line

Set iron bars & stakes on corrected
line at 31.68, 17.00, 9.50

Line #1 = South

Produced corrected line S 4 1/2 W
at 7.00 - iron bar

18.46 stake. Midge gravel in pits

18.75, stake 5.

18.60 set iron bar ^(@ pits) 1.36 lks. E. of

iron bar at NW of Pinkney pits

Line # 2
North

Start at 9.10 page 70

0.00 = Line p. 70.

9.41 iron pin in fence row
17.00 (near) iron bar in fence row, measuring
west 65° from 17 of line #1.

at 36.00 line #1, turned
L. 89° 32', near W. 65°

Set stake, this makes

36.00 of line 2

36.00 - 4.28 = 31.72 = stake in
fence line - iron bar + reduction

43.09 stake for Line, Set stone

14" Hackberry	S 57 W	17	1 RE
1" Pig Hickory	N 75 E	22	1 KS

44.36 (near) H₂O

Line # 2 South

This line is parallel to line
No 1, @ 65° west

7.00 - iron bar & stake

17.53 - stake (peg) N. side gravel at pile

17.70 (near) @ pile

17.69 iron bar in pile

23.04 set 5/8" bar, @ R, R, ~~4.75~~ 4.75

ch. W. of iron bar, opp. SW ← ↑
Purkeypile

fence should be 4.75

178

Sta. 0 = 15.21 p. 70.
(see page 70)

Produced line N. from 35.00
line # 2. = 6.11 d. Call this

36.00 line # 3

26.00 (near) stake

31.75 (near) stake for iron bar
in fence line

17.00 (near) set pin in fence row, 6.11 W,
line # 3.

40.15 H₂O

59.81 - boulder with X

13" White Elm N41E, 16 lbs
10" Black Hick N50W, 6 "
Pig nut

9.40 (near) in fence row, near 6.11
from line # 2

0.16 iron bar in fence line

11.37

~~12.37~~ iron pin N. of hog pen

11.55

~~12.55~~ blue nail mark on N
end of beam 3' from NW ←

17.53 (located this point by turning
N 89° 32' from 17.53 line 2
distance 6.11

17.53	17.53
6.56	579
<u>2409</u>	2332

24.07 O Work

23.32 iron pin in N. 89° 4-way fence

(O Work, no pin comes in a tie)

17.03 iron pin O pipe

175

Line # 4 - IV

Aug. 4-1911

Start at 217 1/2 page 70.

9.36 stake in side steep hill at N. side
big ravine

14.00 cross deep ravine

15.50 stake about 2 rods SW of old road

27.63 stake

36.24 cross transect line S of
river, 181ks W. of Sta 25+26
of line page 58

37.16 S. line H20

36.47 big stake by stone pile

36.70 stake

36.70 is 20.82 from line #1, 36.27

33.00 stake

36.47 stone with X cut,
26" Sycamore N 2 1/2° E 84
17" White Elm N 22° W 68

2082

No 4 - South

0.36 iron bar S. of fence line

15.76 stake in shoulder - pike grade

15.57 " S " " "

15.42 (near) O pike

15.40 iron pin in pike

24.80 1/2 stake at N. line Rt. of way

25.08 is 3.60 lks. (1st 43) from
bill. O.R.P. at ~~FWK~~ Wilkinson

26.60 bill in S fence at of way

33.09 stake in fence line N. line Stephenson
emerge about 355 W. of stake at
Wilkinson line

Cloned into plant stone

178

Line # 5 N.
Tessell L. 87° 32' from 33.03
Line # 4.
Rune with 5.93 at set stake,
calling it 33.5 line 5.

33.35 stone with X

33.35 + 5.74 = 34.09 ± = H=0

33.35 stone with X by telephone pole

With 18" Sugar - N 20° E 57
22" Oak. Walnut S 25 1/2° E 80

This stone is in river - transit line at
31.59

Set in line in driveway by 2d house
Line # 4. 2 meas. w. 5.93 set
iron pin & stake in line # 5

Meas. W. 5.93 from 27.63 of line 4.
Thence N.

27.63 + 5.87 = 28.50

Iron pin & stake at 28.50, S. of fence
0 + 00 = 29.36 p. 70'

Line # 5 - South 81

0.46 iron pin in fence row

14.432 stakes - N + S. side gravel
14.72)

14.58 iron bar @ pipe

36.49 iron bar @ R.R.

58.17 - stake in N. line Stephens.
Edward Braughman will set stone
at once

(5.42 h from line 4)

178