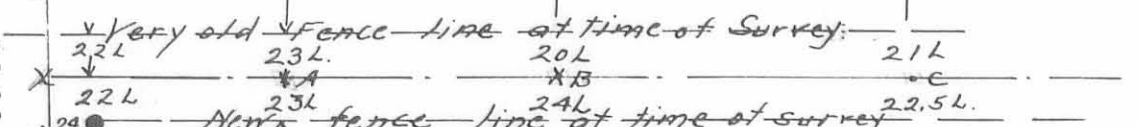
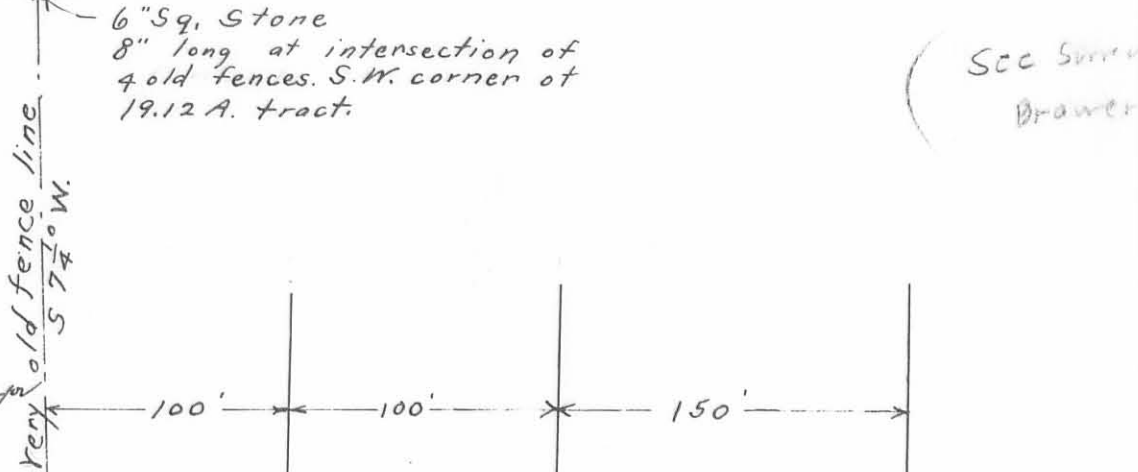


Survey of a part
of
John Harris Road
in
Miami Tp. Logan Co.

McCh. 8, 1921 E. H. Jewell
Supt. Co. Surveyor

(See Survey 944
Drawer R.)



Large Cement
Corner Points A, B, and C on E of
present road grade
Point X was set on line with A and B.
Road from X - West was not straight

Note; Could find no record of this road
Deeds call for lands as being that
lying north and west of township road
and that lying East and south thereof.

(24)
INSERTED ON MAP

