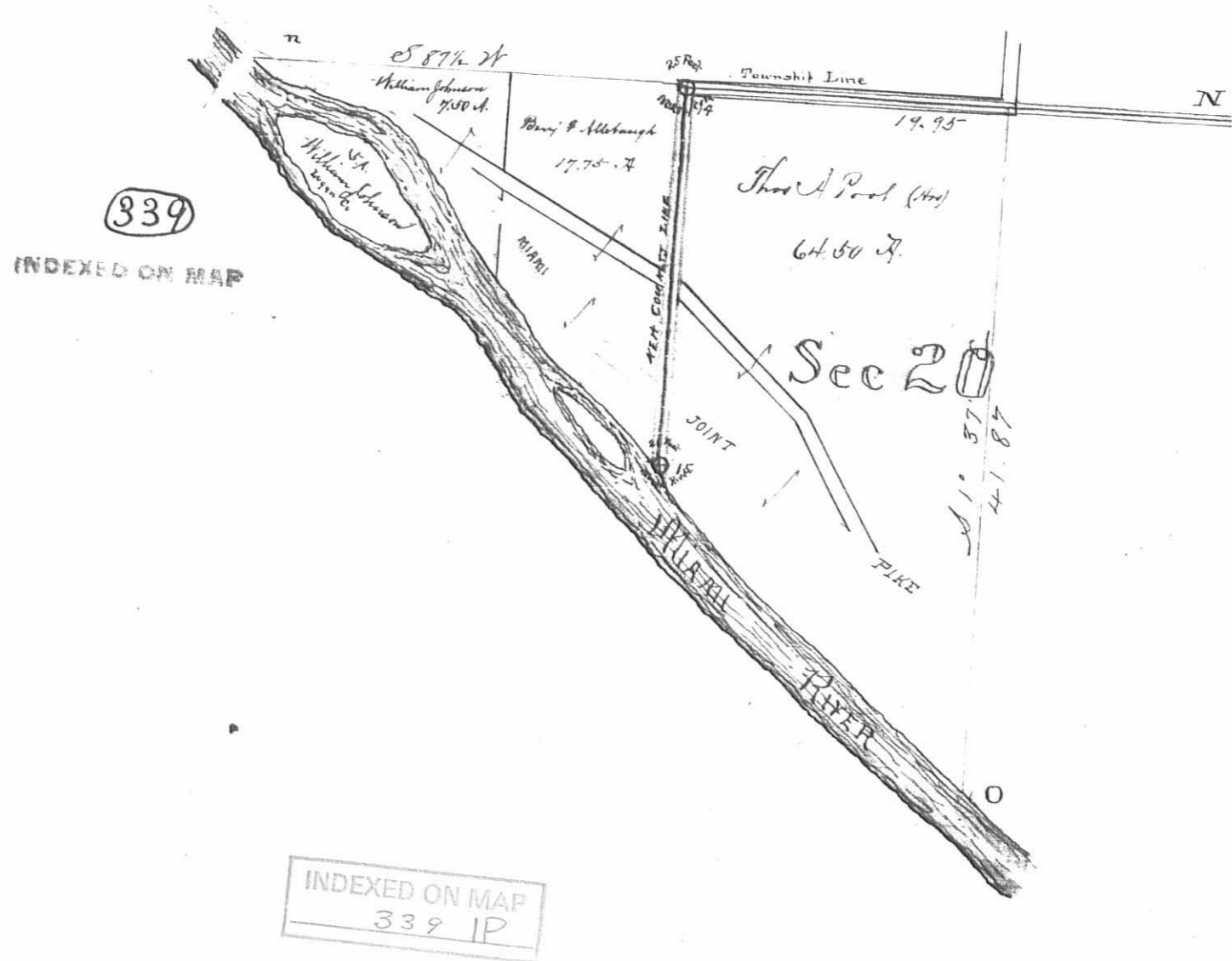


Map of Dec. 20 J-1. N8

Shelby and Logan County Lines



339

INDEXED ON MAP

INDEXED ON MAP
339 IP

Received 6-3-92

MAP ROOM OK (CR)

**POOL - YOCUM SURVEY
Tract No. I**

The following described real estate situated in the Township of Miami, County of Logan, State of Ohio and being the west side of the west half of Fractional Section No. 21, Town 1, Range 8 East and being more particularly described as follows:

Beginning at a 5/8 inch Rebar in a Monument Box found at the Northwest corner to Fractional Section No. 21 and in the centerline of T. R. No. 23 as shown in Logan County Engineers Field Book No. 708 Page 10;

Thence with the line between Fractional Section No. 21 and Section No. 16, S. 88°47'41" E. 1,317.61 feet to a Large Wood Corner Post found at the northwest corner to Hollis and Laura R. Bell's present 110.20 Acre tract as recorded in Deed Volume No. 404 Page 819 (5-14-1984);

Thence with Bell's west line, S. 0°21'53" W. 3,514.19 feet to a point on the north bank of the Great Miami River, passing through a 5/8" x 30" Rebar set in C. H. No. 73 at 3,098.26 feet and a 5/8" x 30" Rebar set next to a Cedar Corner Post at 3,505.19 feet;

Thence with the meanderings of the north bank of said Great Miami River in a Westerly and Northwesterly direction, 1,690.00 feet, plus or minus to a point where the west line of Fractional Section No. 21 intersects said north bank;

Thence with the west line of Fractional Section No. 21 and the east line of Fractional Section No. 20 and the centerline of T. R. No. 23, N. 1°00'00" E. 2,811.50 feet to the place of beginning, passing through a 5/8" x 30" Rebar set at 9.00 feet and a P.K. Nail set at the beginning of T. R. No. 23 at 684.95 feet, containing 4,508,084.425 square feet or 103.492 Acres, more or less. (Note: The line between Fractional Sections No. 20 and 21 and the centerline of T. R. No. 23 is the Basis of Bearing for this survey - N. 1°00'00" E.).

Of the above described tract, there is 142,585.80 square feet or 3.273 Acres in the rights of way of T. R. No. 23 and C. H. No. 73.

I hereby certify that this description is the result of a field survey made by me on May 29, 1992.



Daniel E. Gilbert
DANIEL E. GILBERT, P.S.
REG. SUR. NO. 5402
400 N. PARK ST.
BELLEFONTAINE, OHIO 43311
TELEPHONE: 1 (513) 593-1428

INDEXED ON MAP
339 20-1

POOL - YOCUM SURVEY
Tract No. II

The following described real estate situated in the Township of Miami, County of Logan, State of Ohio and being the east side of Fractional Section No. 20, Town 1, Range 8 East and being more particularly described as follows:

Beginning at a 5/8 inch Rebar in a Monument Box found at the northeast corner to Fractional Section No. 20 and in the centerline of T. R. No. 23 as shown in Logan County Engineers Field Book No. 708 Page 10;

Thence with the line between Fractional Section No. 20 and Fractional Section No. 21 and the centerline of T. R. No. 23, S. 1°00'00" W. 2,811.50 feet to a point on the north bank of the Great Miami River, passing through a P. K. Nail set at the beginning of T. R. No. 23 and the centerline of C. H. No. 73 at 2,126.55 feet and a 5/8" x 30" Rebar set at 2,802.50 feet, (Note: The line between Fractional Sections No. 20 and 21 and the centerline of T. R. No. 23 is the Basis of Bearing for this survey - S. 1°00'00" W.);

Thence with the meanderings of the north bank of said Great Miami River in a northwesterly direction, 1,700.00 feet, plus or minus to a point where the line between Shelby and Logan Counties intersects said north bank;

Thence with the line between Shelby and Logan Counties, N. 0°07'08" E. 1,714.44 feet to a Large Stone County Line Monument found in the north line of Fractional Section No. 20 and the south line of Section No. 17, passing through a 5/8" x 30" Rebar set at 55.00 feet and a R. R. Spike set in the center of C. H. No. 73 at 681.84 feet;

Thence with the line between Fractional Section No. 20 and Section No. 17, S. 89°47'53" E. 1,317.57 feet to the place of beginning, containing 2,972,409.060 square feet or 68.237 Acres, more or less.

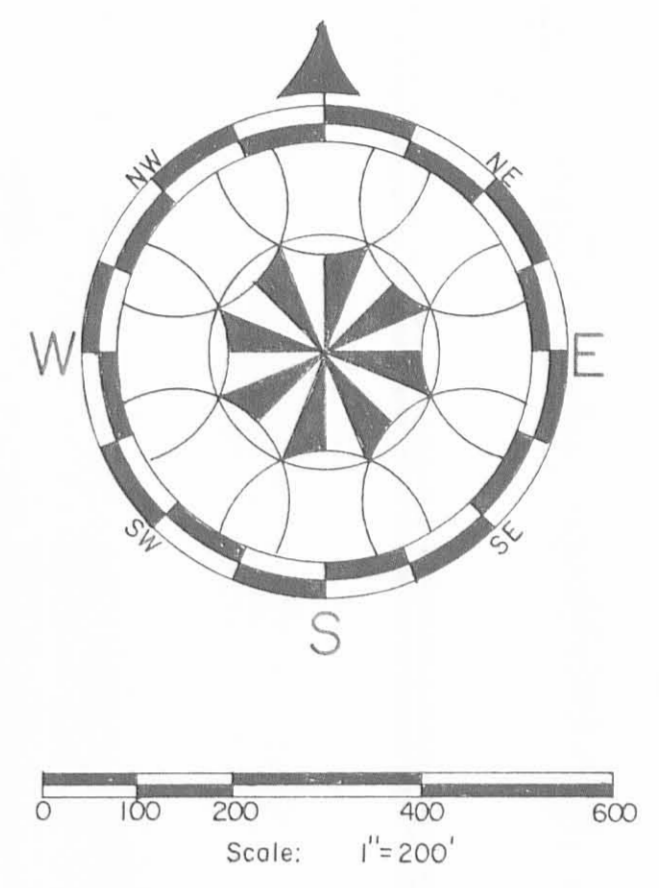
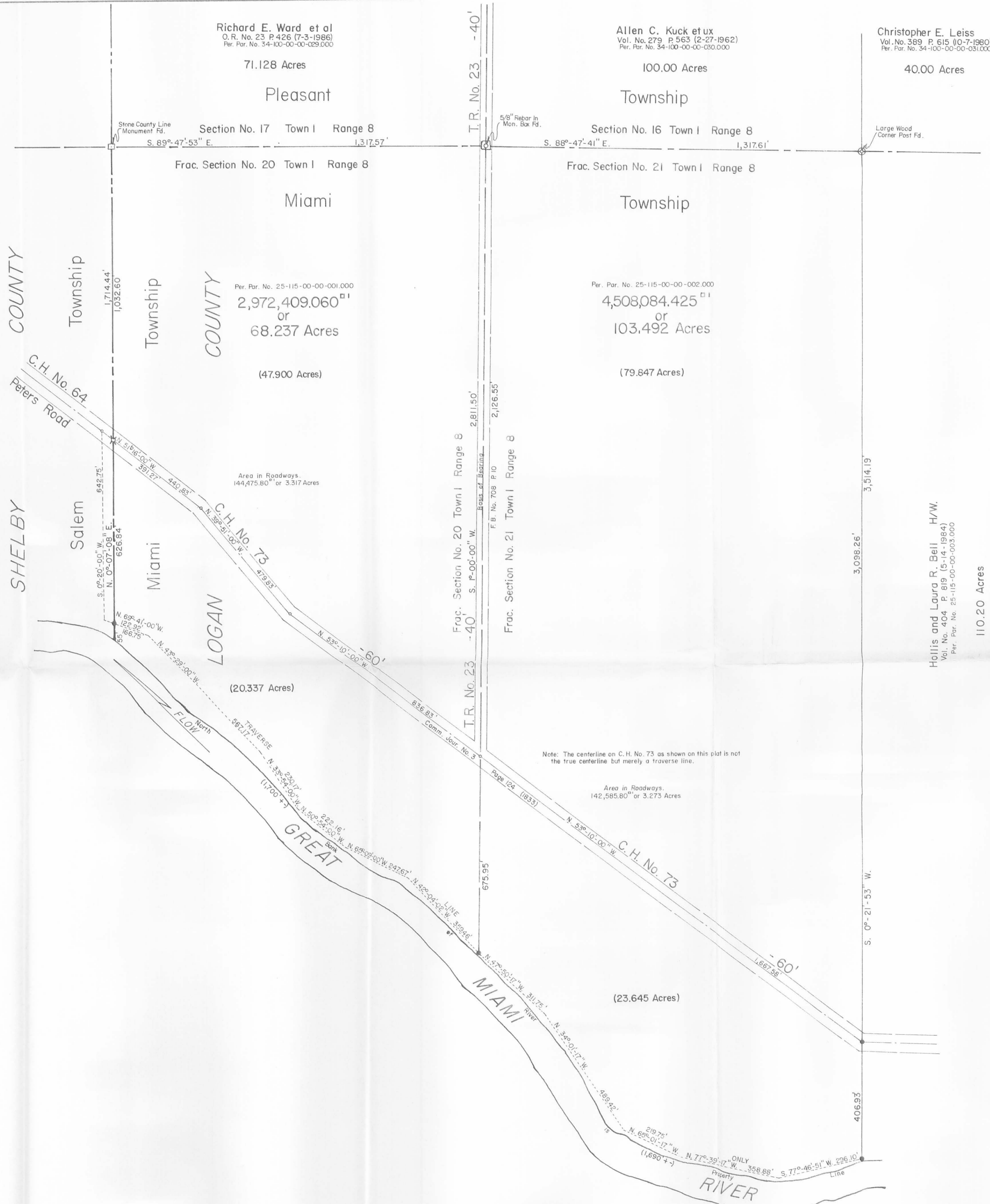
Of the above described tract, there is 144,475.80 square feet or 3.317 Acres in the rights of way of T. R. No. 23 and C. H. No. 73.

I hereby certify that this description is the result of a field survey made by me on May 29, 1992.



Daniel E. Gilbert
DANIEL E. GILBERT, P.S.
REG. SUR. NO. 5402
400 N. PARK ST.
BELLEFONTAINE, OHIO 43311
TELEPHONE: 1 (513) 593-1428

INDEXED ON MAP
339202



Note: The centerline on C.H. No. 73 as shown on this plat is not the true centerline but merely a traverse line.

Total Area - 171.729 Acres

- REFERENCES:
- Deed Vol. 381 P. 260-261 (12-30-1978).
 - Deed Vol. 381 P. 25-26 (12-30-1978).
 - Deed Vol. 271 P. 531-533 (12-19-1960).
 - Deed Vol. 184 P. 534-537 (10-11-1945).
 - Deed Vol. 172 P. 48 (9-10-1942).
 - Deed Vol. 145 P. 569-570 (3-28-1934).
 - Deed Vol. 145 P. 570-571 (3-28-1934).
 - Deed Vol. 40 P. 111-112 (11-18-1863).
 - Deed Vol. J P. 119-121 (2-5-1838).
 - Lo. Co. Eng. F.B. No. 300X P. 7-8. Index No. 339-340.

- SYMBOLS:
- o - P. K. Nails Set.
 - x - R. R. Spike Set.
 - - 5/8" x 30" Rebars Set.

INDEXED ON MAP
339 2P



Pool - Yocum Survey, Part of Fractional Sections No. 20-21, Town I, Range 8, Miami Township, Logan County, Ohio.

Scale: 1" = 200'

DATE: 5-29-1992

DRAWN BY: Daniel E. Gilbert, P.S.
Reg. Sur. No. 5402

CHECKED BY: DEG

DRAWING NUMBER: 092-021

INDEXED ON MAP
339 2P

Dec 20 T. 1 R. 8 Shelby Co

Line A start at stone N 2^o E Dec 20 in pond
 Wit White elm 40" S 25 1/4 E 29 1/2 links also
 a sugar crooked S 79 E 104 links
 Apparent course of road N 1 1/2 W
 Start 10 links west of stone S 1 1/2 E Posts land
 each side from B to River, but at stake in line at 12.95 ch
 at 32.14 ch cut in main, from the N to S W.
 at 41.87 ch stake on North Bank River - A
 strike 19 links west of - variation 9 links
 Wit A = W. Hick 20" N 57 1/2 E 80 3/4 ch + as 18" N 36 1/4 W 11 1/2
 at 44.63 ch ang 7 20' W of S Bank of River.
 at 45.32 chains Elm 20" on line E Dec 20 + on
 south Bank of River

Line B start at ang 7 44 63 of line A, thence with
 chain of 800 N 49 1/4 W. at 27 chains chain forks
 on in chain on line Branch river 23 chains at 600
 at 126 holes at 7 on island N 40 3/4 S 60 feet
 at 37 chains chain splits, main chain bears N 30 1/2 W
 at 44 chains chain branch points, at 48 chains dam on
 at 53 chains set on island S bank line S bank main line N 10 W
 at 53 chains Johnsons house N 6 E, Mill on
 120 chains West end of island. chain 300 on side, 200 on
 123 1/2 chains first on center line N from iron bridge
 and 14 7/8 W of center of cut for river

Dec 20 T. 1 R. 8



INDEXED ON MAP

Line C start at B. S 87 1/2 W
 at 30 ch set in line at road B
 30.66 ch stone N W = Spuman and in 2 links
 38 chains Johnsons house 30 feet north
 40 chains west line Johnsons.
 43.10 ch cut like course N 74 W
 46.46 ch cut N about iron pin at River 11 Mar 12 1/2 N 9 E
 then on with cut for S 25 1/4 W 1.09 chains to intersect line B
 at line B is S 3 W and runs to cut S end iron 120
 14 ch to 31 7/8. From N end of line B is N 25 1/2 E 1.53 ch
 to intersect line B on N
 Line D. start at stone C, Dec 15 N 2 1/2 W 8 1/2 links also reach
 18 S 49 E 11 links, thence S 1 1/2 E 3.54 chains to intersect line B on
 River chain at 26.50 chains from east end line B.
 Course of county line South of Missouri River
 is S 2 1/2 W
 (Stone W C 19.95 ch from B)

For record of setting Monuments see page 5 this book