

DeGraff Road, # 256
Miami Township

Sec 12-T & R. 13

stakes placed 20' from ϕ

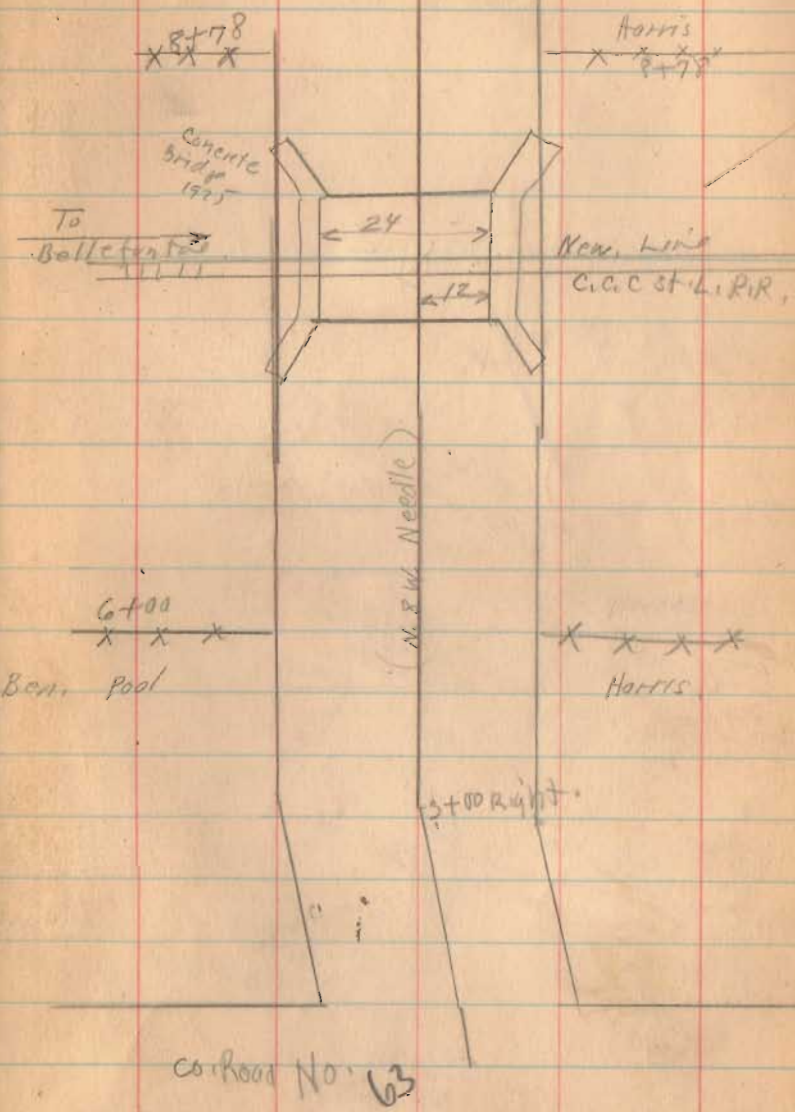
7+96 ϕ C.C.C. 957.2.

1306
INDEXED ON MAP

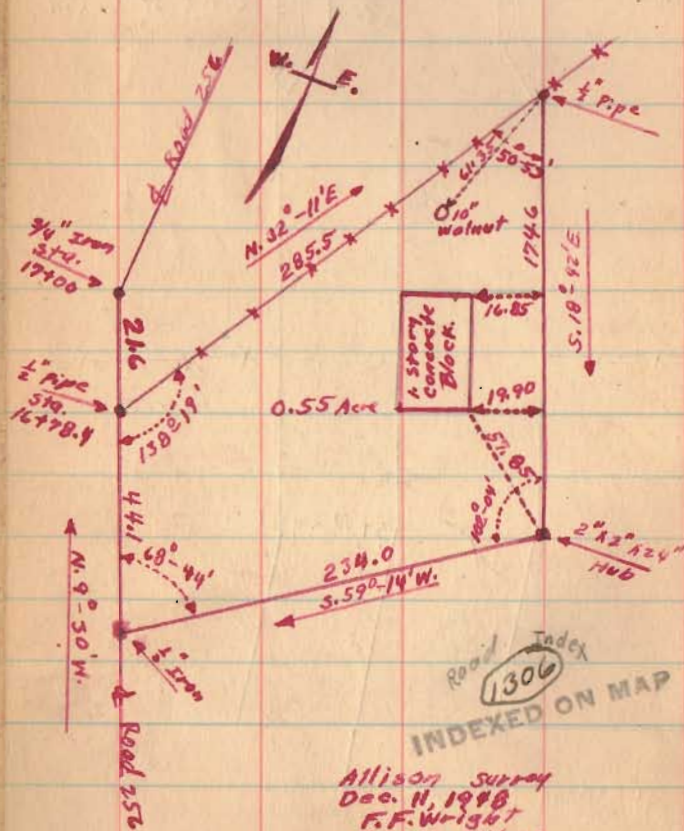
Aug-6-1930

25

cloudy
wright
bridge.



Road # 256

Sta. Measurements on \odot P.I. To, AT.

$14^{\circ}-28'$

12-11-1948
 Hub Found
 placed
 3/4" iron

17+00

Hub

N. 9°-30' W.
 From Old Harris to Allison
 Vol. 181 Page 569

$\Delta 14^{\circ}-20'$
 R 1967
 35.1
 $D = 14^{\circ}-20'$
 $D = 7^{\circ}$
 $E = 6.45$
 $T = 103.20$
 $R = 819.02$

Wild
 Cherry
 6 ft
 on
 cut

12" Hackberry

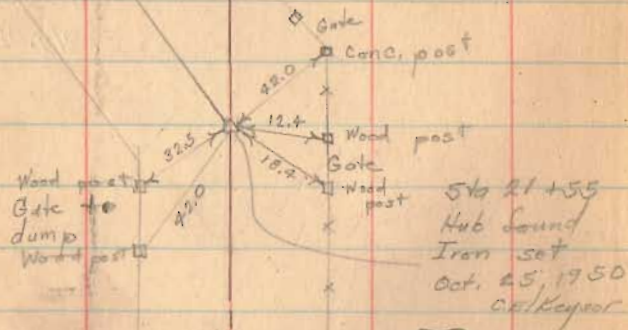
Allison

16+85
 16+78.4

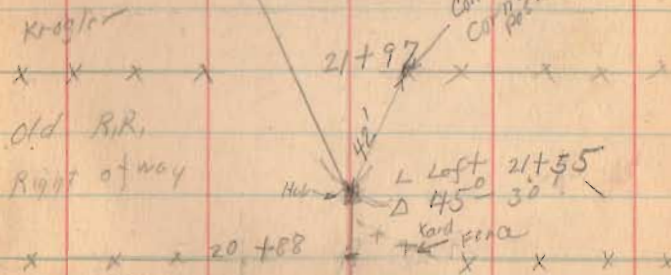
Harris

Road # 256

steel span pony truss
Wood Floor
stone abts

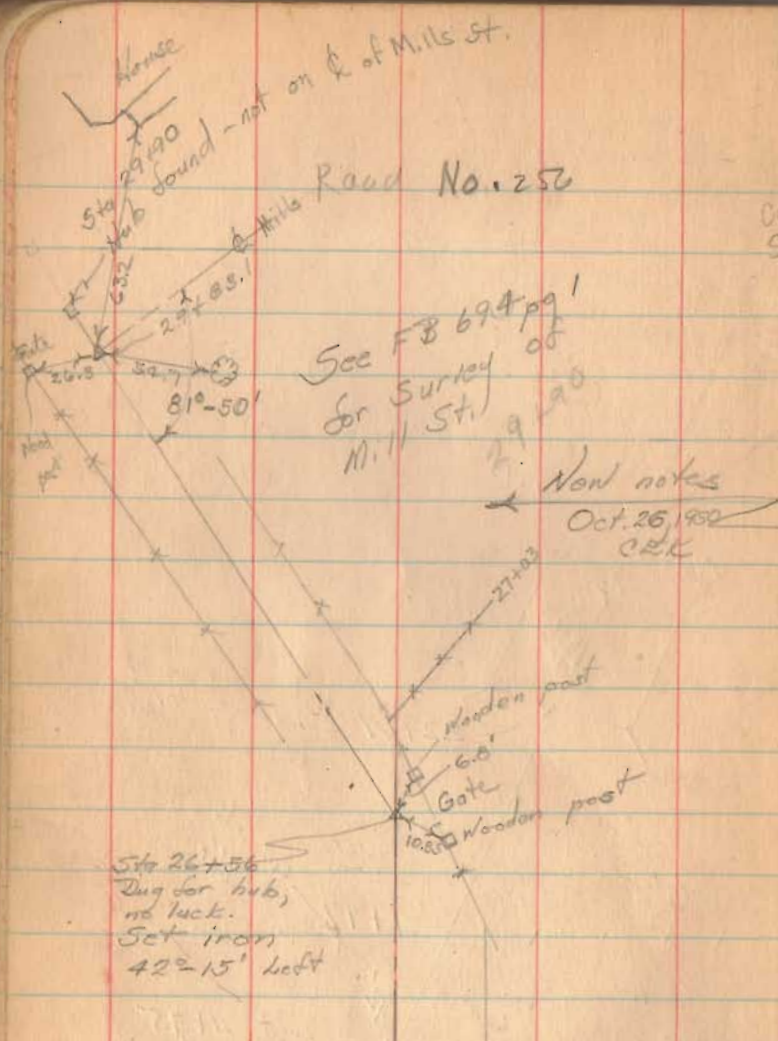


1306
INDEXED ON MAP



D = 32.0
T = 96.0
E = 15.28
R = 181.90



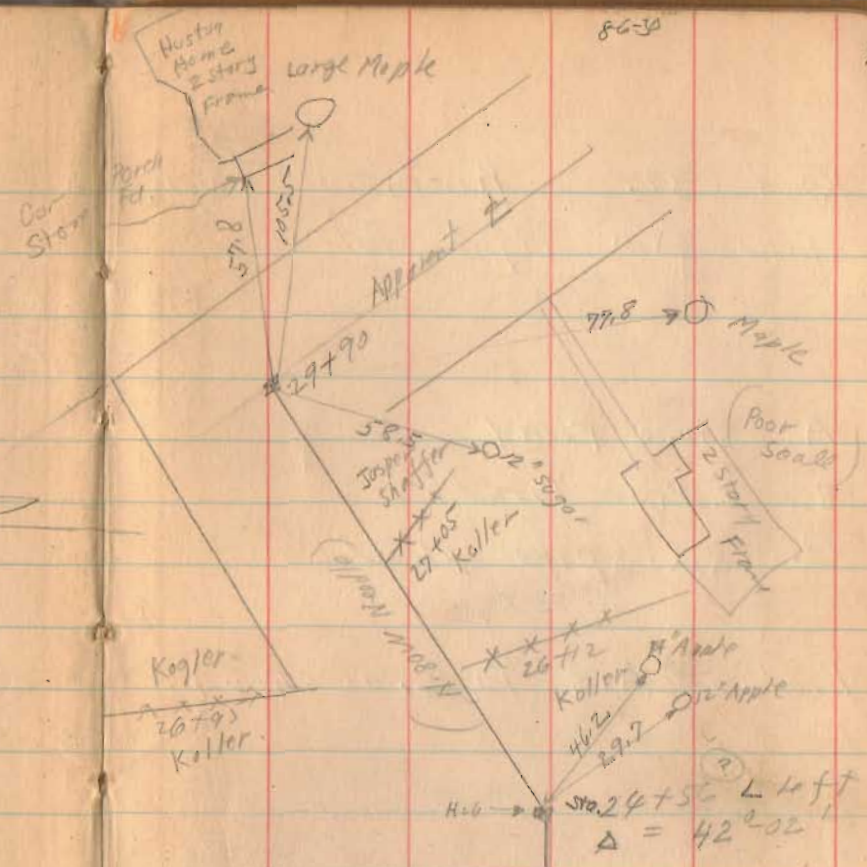


See FB 694 pg 1
for Survey of
Mills St.

Non notes
Oct. 26 1952
CRK

Site 26+56
Dug for hub,
no luck.
Set iron
42°-15' left

1306
INDEXED ON MAP



D = 32°
E = 12.92
T₁ = 49.60
R₁ = 181.40