

Road 23  
Miami and Pleasant Twp

1892  
60' sta. 0+00 TO 21+78 Road Record 3 Page 141

1899  
60' sta. 21+78 TO 35+03 Commissioners  
Journal 6 Page 117

Staked 60' from 21+78 to 35+03

1795  
INDEXED ON MAP

Sept. 4, 1937  
Clear Warm  
F. Wright  
G. Wilgus  
W. Wren

55

G. W. & Sam Pool

Road 23  
Miami Valley Pike



sta. 0+00

stone N. side Gravel  
15' Ash 5 7/8" W 35'  
8' Willow 6.75' E .35'

Road 23

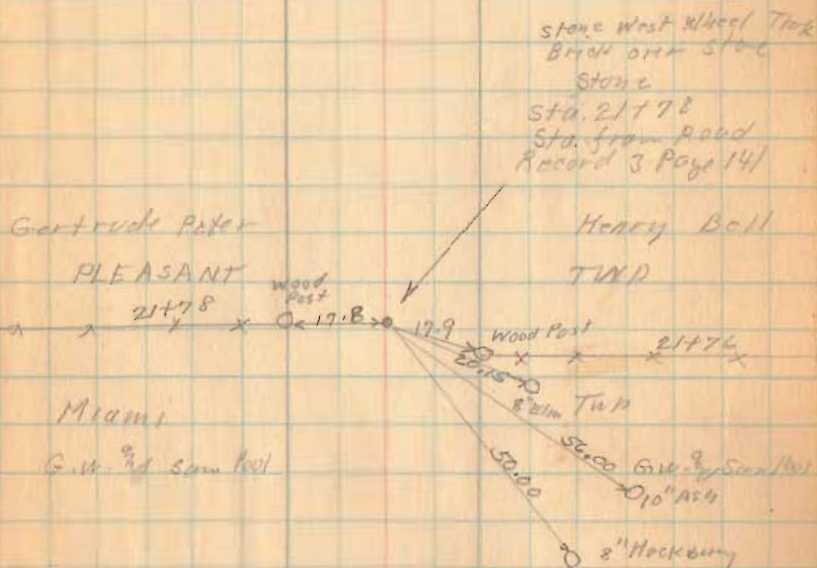


1795

INDEXED ON MAP

9-4-32

60



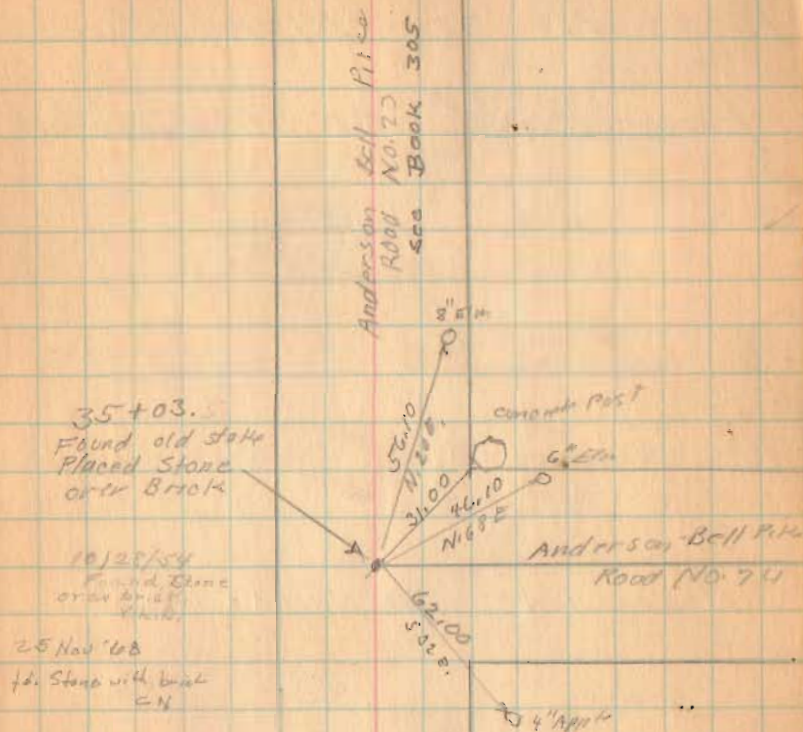
Road 23

1795

INDEXED ON MAP

9-4-37

61



Road 23

North  
Needle

