











FB 713

C.R. 4A  
Miami Township  
Logan Co., Ohio

101+42.49 - P.I. - Found 1/2" dia  
iron bar w/ top bent - this  
iron was in bad shape so  
we replaced it with a 5/8"  
dia. capped iron bar stamped  
"Logan County Engineer."  
Shown as Sta. 20+28 on pg. 3  
of 1935 Brg. 43-2.30 plans.  
Ref: F.Bk. # 403, pg. 45.  
11°-00'-34" Rt.

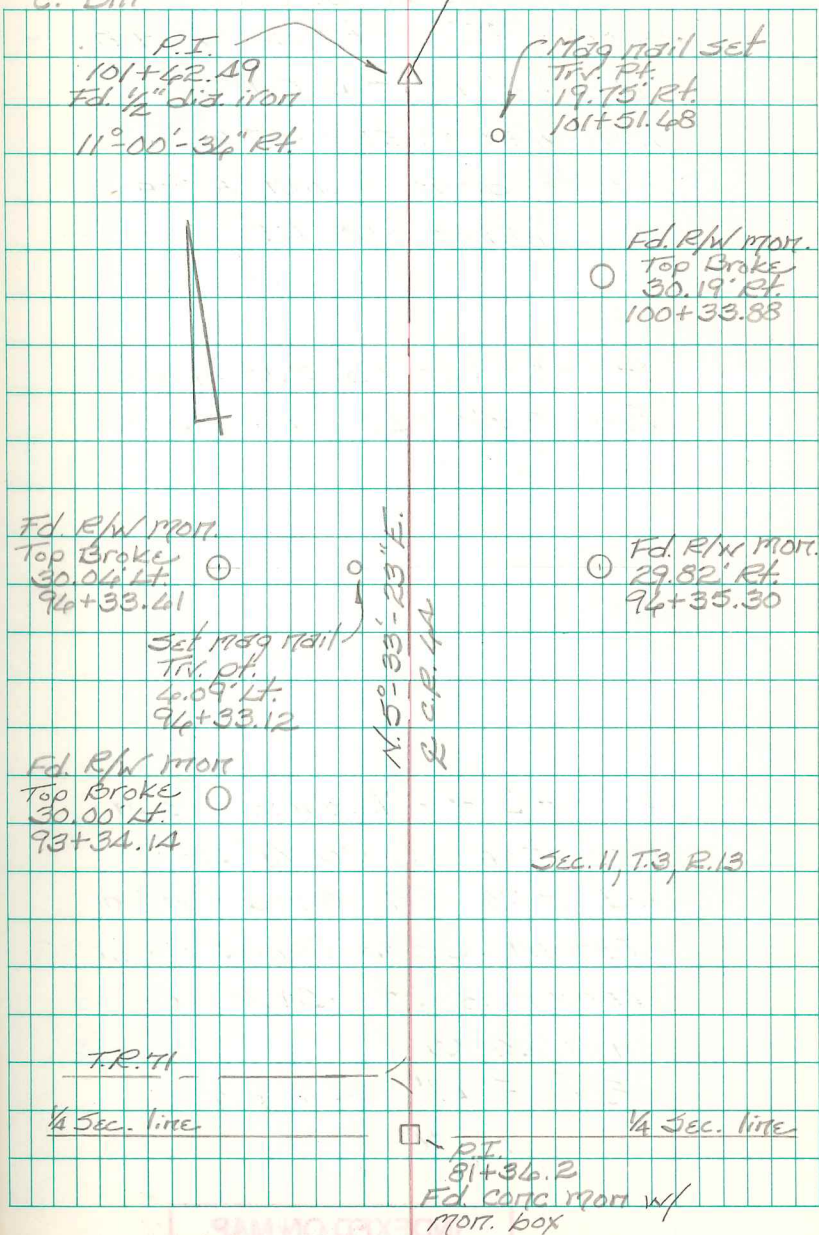
81+36.2 - P.I. - Fd. concrete mort. in  
mort. box - Center of Sec. 11,  
T.3, R.13 - The monument box  
was in bad shape so we  
repaired it. - Start of  
this survey.  
Ref: F.Bk. # 403, pg. 43 &  
pg. 77

INDEXED ON MAP  
1804

B. Simmonds  
G. Dappert  
C. Dill

April 2016

70



FB 713

C.R. 4A  
Miami Township  
Logan Co., Ohio

108+23.05 - P.I. - Set 1" dia. iron bar -  
Fd. a 1" dia. iron bar here in  
2007 which was destroyed  
during bridge construction.  
15°-17'-01" Rt.

108+22.95 - P.O.T. - Fd. R.R. Spike -  
Apparently set during recent  
survey.

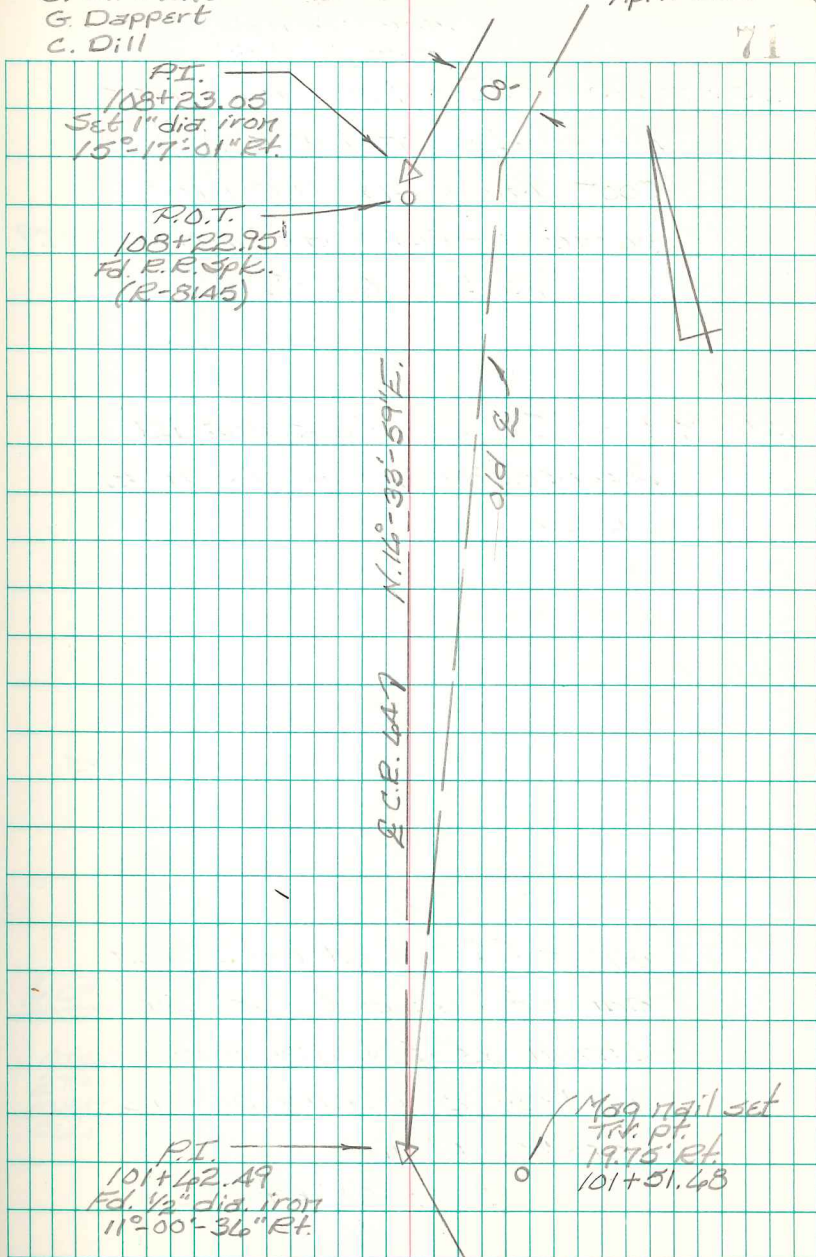
101+42.49 - P.I. - Fd. 1/2" dia. iron bar  
w/ top bent - This iron was in  
bad shape so we replaced it  
with a 3/8" dia. capped iron bar  
stamped "Logan County Engineer."  
Shown as Sta. 20+28 on pg. 3  
of 1935 Brq. 43-2.30 plans.  
Ref: F.Bk. # 403, pg. 45.  
11°-00'-36" Rt.

INDEXED ON MAP  
1804

B. Simmons  
G. Dappert  
C. Dill

April 2016

71



P.I. →  
101+42.49  
Fd. 1/2" dia. iron  
11°-00'-36" Rt.

Mag nail set  
Trk. Pt.  
1975 Rt.  
101+51.43

INDEXED ON MAP  
1804

FB 713

Intersection C.R. 43 w/ C.R. 44  
Miami Township  
Logan Co., Ohio

33+90.43 - P.I. - Fd. 1" dia. iron  
bar. - Set this iron bar in  
2007 using R/W monuments  
found - Shown as Sta. 33+87.9  
on 1935 Brq. 43-2.30 plans.  
17°-21'-06" Rt.

27+19.9 - P.I. - Set 1" dia. iron bar -  
Intersection of C.R. 43 w/ of  
C.R. 44 - Fd. a 3/4" dia. iron  
bar here in 2007 which was  
destroyed during bridge  
construction.

Ref: FRK.# 587, pgs. 8 & 43  
1935 Brq. 43-2.30 plans

108+23.05 - P.I. - Set 1" dia. iron  
bar - Fd. a 1" dia. iron bar  
here in 2007 which was  
destroyed during bridge  
construction.

15°-17'-01" Rt.

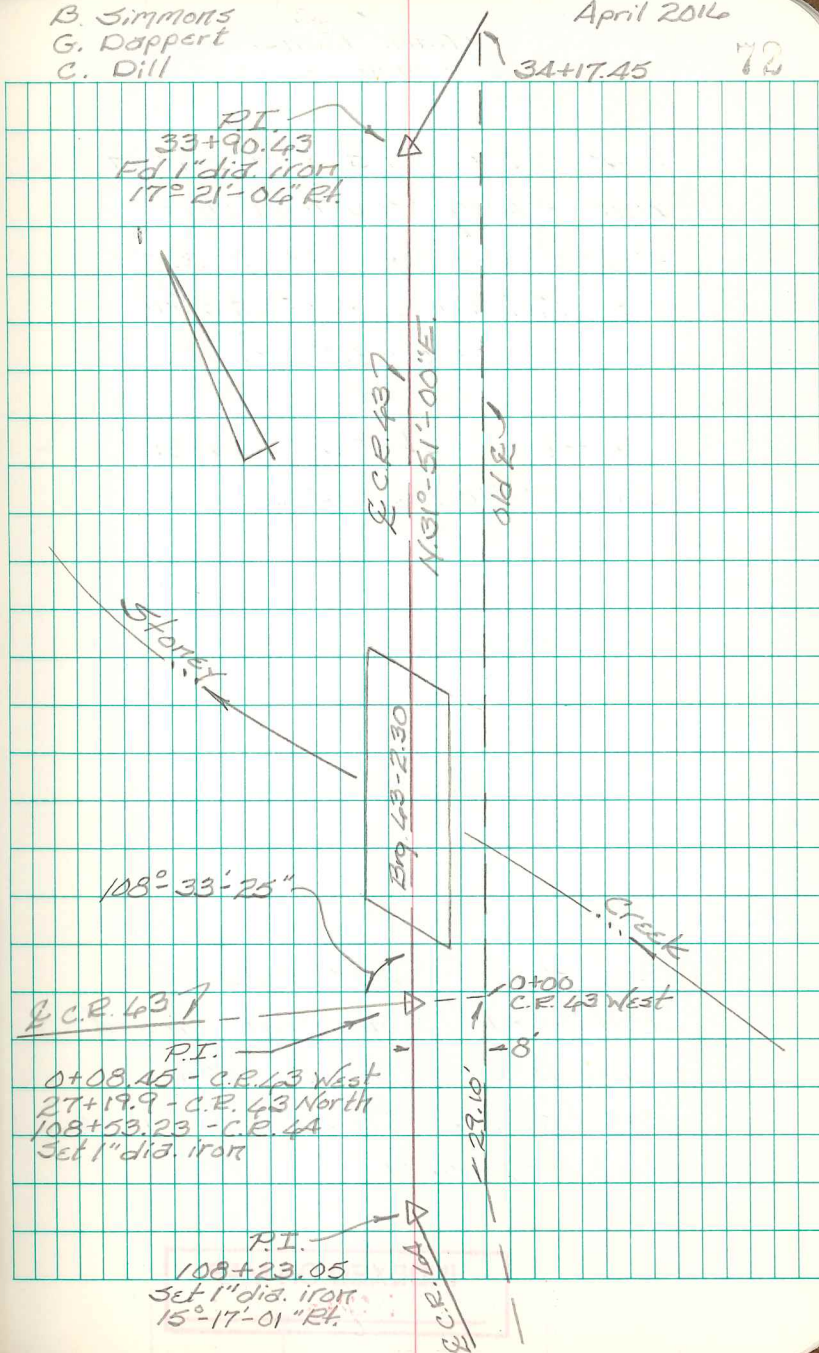
INDEXED ON MAP  
1804

B. Simmons  
G. Dappert  
C. Dill

April 2016

34+17.45

72





FB 713

C.R. 43  
Miami Township  
Logan Co., Ohio

46+82.34 - P.I. - Fd. 1" dia. iron  
bar - Dug here in 2007 in  
search of hub - No luck -  
Set 1" dia. iron bar on split  
of R/W monuments found at  
that time. - Shown as Sta.  
46+81 in F.Bk. #587, pg. 41. -  
End of this survey.

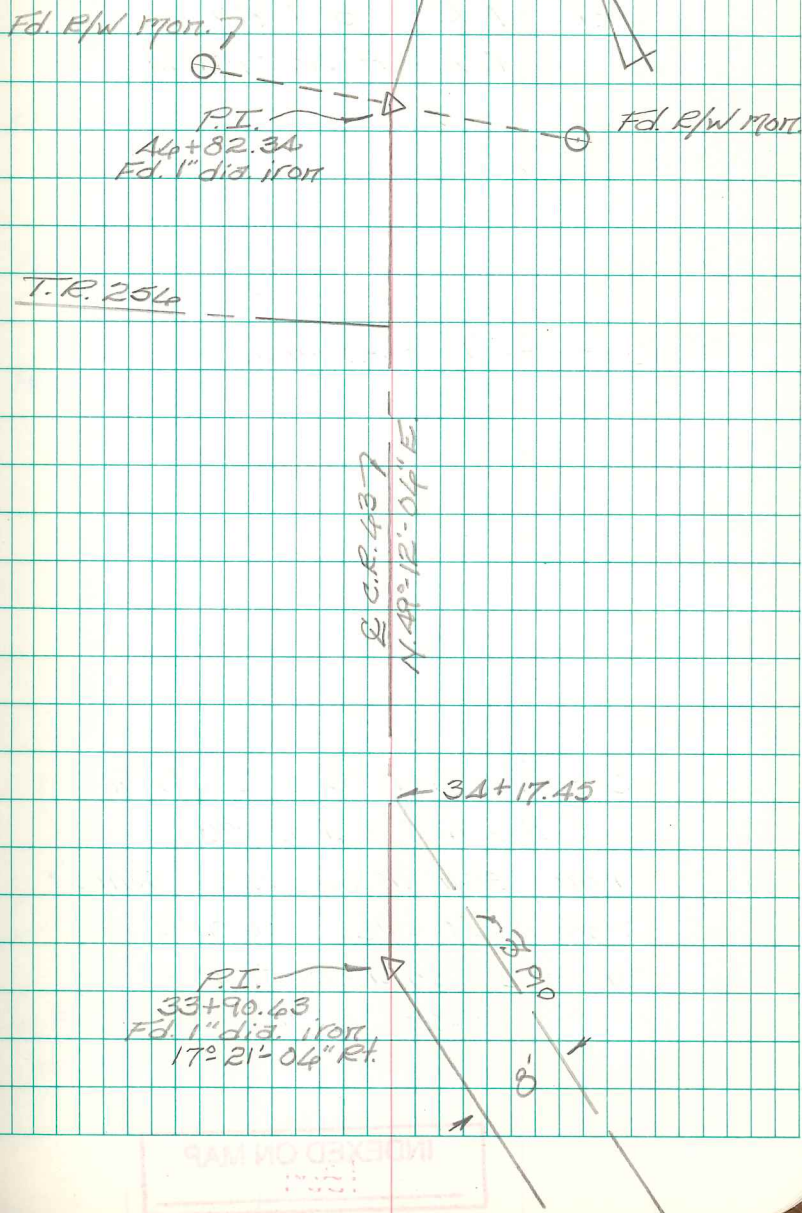
33+90.43 - P.I. - Fd. 1" dia. iron bar -  
Set this iron bar in 2007  
using R/W monuments found -  
Shown as Sta. 33+87.9  
on 1935 Brq. 43-2.30 plans.  
17° 21' 04" Rt.

INDEXED ON MAP  
1804

B. Simmons  
G. Dappert  
C. Dill

April 2016

73



FB 713

Intersection C.R. 43 w/ C.R. 44  
Miami Township  
Logan Co., Ohio

13+87.83 - P.I. - Fd. R.R. Spike -

Ref: F.B.K. # 587, pg. 8

O.K.S. F.B.K. # 10, pg. 52

7+85.02 - P.O.T. - Fd. mag nail -

Set in 2007

0+08.45 - P.I. - Set 1" dia. iron bar -

Intersection of C.R. 43 w/  
of C.R. 44 - Fd. of 3/4" dia.

iron bar here in 2007 which  
was destroyed during  
bridge construction

Ref: F.B.K. # 587, pgs. 8 & 43

1935 Brq. 43-2.30 plans

INDEXED ON MAP  
1804

B. Simmons  
G. Dappert  
C. Dill

April 2016

74

Pt. A - Fd. mag nail  
0.07' E.  
108+53.16  
(E-8145)

Pt. B - P.O.T.  
Fd. R.R. Spk.  
108+22.95

Pt. C - Fd. mag nail  
8.05' E.  
27+22.52

