

Road No. 34 Miami Township

$$\Delta = 45^\circ - 16'$$

$$D = 240'$$

$$P.C. - 3+58.1 - 0^\circ - 00' \quad R = 240.49'$$

$$P.T. 5+46.7 \text{ Min (Hub, Set)} \quad 3+75 - 2^\circ - 02' \quad T = 100.26$$

$$4+00 \quad 5^\circ - 02' \quad E = 20.06$$

$$4+25 \quad 8^\circ - 02' \quad L = 188.61$$

$$450 \quad 11^\circ - 02' \quad P.C. - \text{Sta.} - 3+58.1$$

$$P.I. - " \quad 4+58.7$$

$$475 \quad 14^\circ - 02' \quad P.T. - " \quad 5+46.7$$

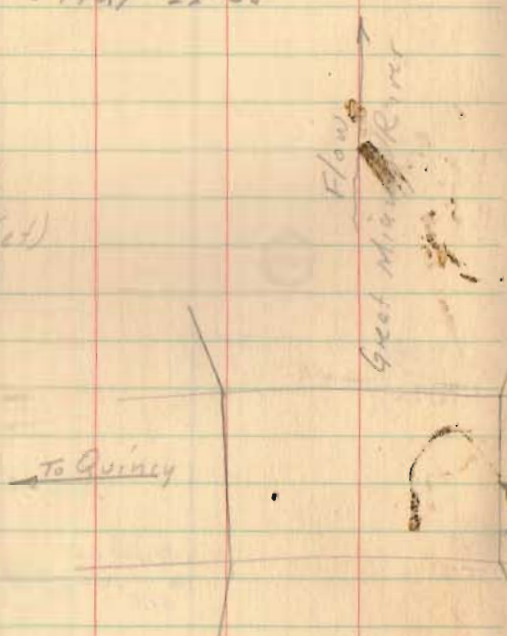
$$5+400 \quad 17^\circ - 02'$$

$$425 \quad 20^\circ - 02'$$

P.C.

$$3+58.1 \text{ Min (Hub, Set)} \quad 5+46.7 \quad 22^\circ - 38'$$

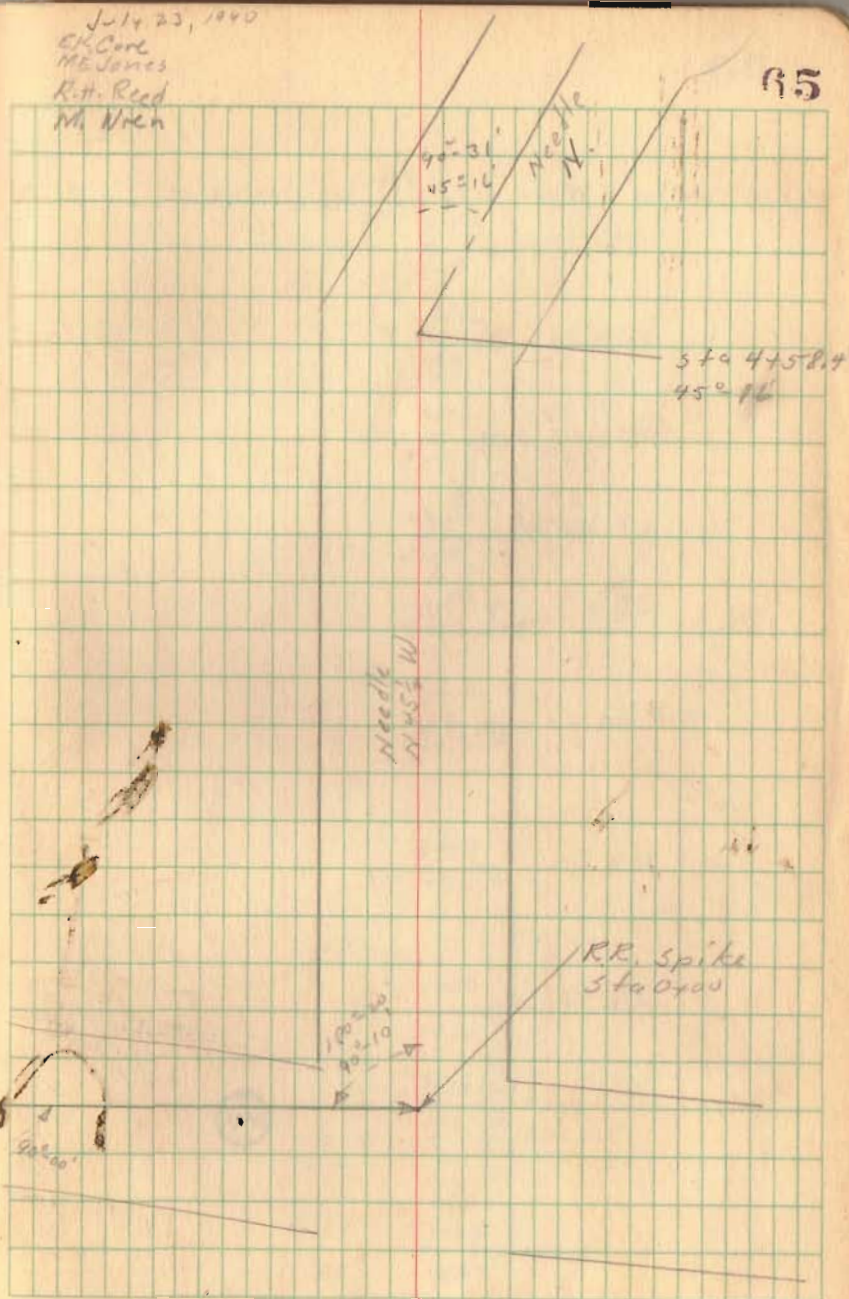
1+00 (Min) (Hub, Set)



July 23, 1940

E.K. Carl
M.E. Jones
R.H. Reed
M. Wien

85



11:00 Mon. (Hubs Set)

7+44.
5-26.7
97.3
100.2
297.5

1823

66

15" Walnut $\frac{10+46}{23.4}$
11+90
13.9 10" Elm.

9+46
14.2 12" Elm

9+13
15.7 6" Dbl Ash

9+00
13.8 10" Dbl Ash.

8+97
14.4 8" Ash

8+92
14.2 24" Dbl Elm

8+13
14.2 12" Dbl Elm

7+83
14.2 15" Elm.

7+74
15.6 8" Twin Locust

7+74
16.25 18" Walnut.

12775
15.5 → 20" Ash

13746
14.0 → 18" Sycamore

13700
16.0 →

12786
13.5 → 18" Hackberry

12757
13.0 → 22" Hackberry

12754
13.0 → 12" Hackberry

12726
15.3 → 10" Elm

12717
13.2 → 18" Hackberry

12414
13.4 → 24" Hackberry

12400
16.0 →

11755
10.3 → 12" Elm

11717
19.8 → 8" Ash

11708
13.2 → 8" Ash

18

P.C. - 15+51.1

$\Delta = 61^\circ - 05'$

P.I. = 16+26.6

$D = 46'$

P.T. = 16+83.9

$R = 127.965$

$T = 75.50$

P.T. 16+83.9 Mon. Right only
(Hub Set)

$E = 20.61$

$L = 132.78$

P.G. - 15+51.1 Mon. (Hub Set)

P.C. - 15+51.1

+75 - $5^\circ - 30''$

16+00 - $11^\circ - 15''$

+25 - $17^\circ - 00''$

+50 - $22^\circ - 45''$

+75 - $28^\circ - 30''$

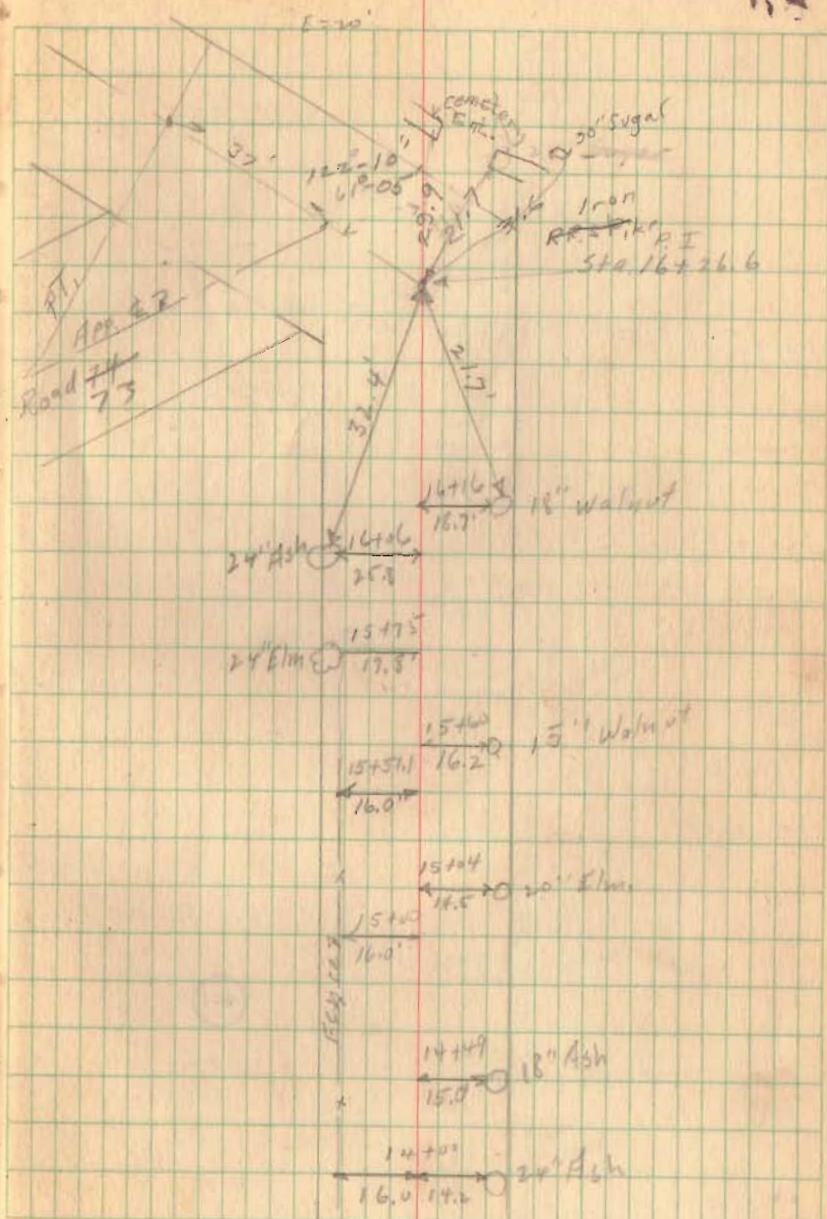
P.T. 16+83.9 - $30^\circ - 32''$

16+26.6
5+46.7
10+79.9
100.26
1180.16

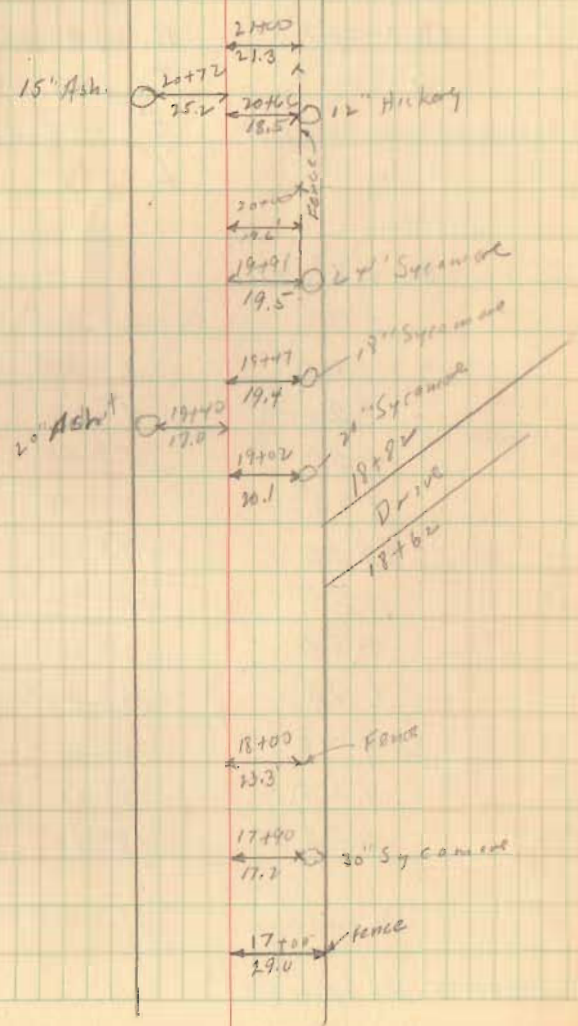
1823

7700'
1177.85
Del. 0.96

98



1823



P.C. 20+60.37 Δ 37° 12'

P.I. 22+09 D 13° 0'

P.T. 23+46.52 R. 441.684

T 148.63

P.T. - 23+46.52 - Mom. (Hub's Set) E 29.35

L 286.15

P.C. 20+60.37

+ 75 0° 57'

21+00 2° 35'

+ 20 7° 12'

+ 30 5° 50'

+ 75 7° 27'

22+00 9° 05'

+ 25 10° 42'

+ 50 12° 20'

+ 75 13° 57'

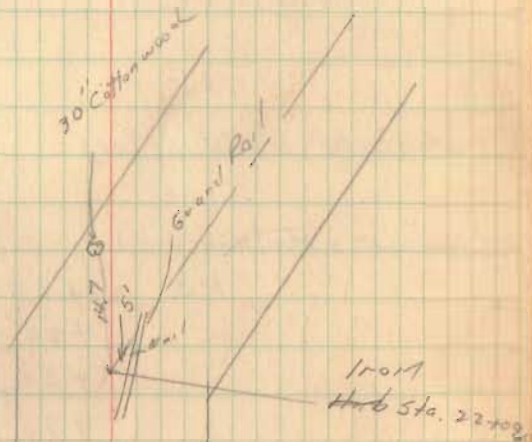
23+00 15° 35'

+ 25 17° 12'

P.T. + 46.62 18° 36'

1023

P.C. - 20+60.37 - Mom. (Hub's Set)



20+60.37
18.8

P.C. 26+163

P.I. 26+938

P.T. 27+68.6

Δ 24° 21'

D 1680'

R 359.24

P.T. sta 27+68.5 - Mon (Hubs Set)

T 77.51

E 8.26

P.C. sta 26+16.3 Mon (Hubs Set)

L 152.19

P.C. 26+163

+20 0° 42'

+50 2° 42'

+76 4° 42'

27+00 6° 42'

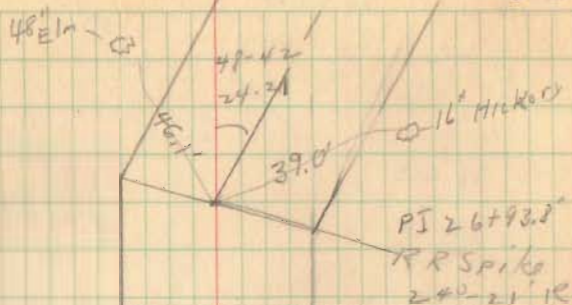
+20 8° 42'

+60 10° 42'

P.T. +68.0 12° 10' 30"

(1823)

71



179-16.20

29 23.10

37

55 23.10

Cor.
stone

See Book 655
Page 1A.

38+00 Man (Hub Set)

33+00 Man (Hub Set)

1823

27 65.5

77

26 91.0

Pleasant Twp

Sec. 15 T. 1 R. 8

73

Twp line R

Section Line

19 31.20
179-16-20

stone
to Section

Miami Twp.

Sec. 22 T. 1 R. 8

Iron Pin
Sta. 58+23.10

29+25

Drive

29+09

28+00

Drive

27+35

28+00

182

Pin