

Road No. 229 - Miami & Pleasant Townships

Stakes Set 30' R&L of 4

Width 60'

Commissioners Journal Vol. 7

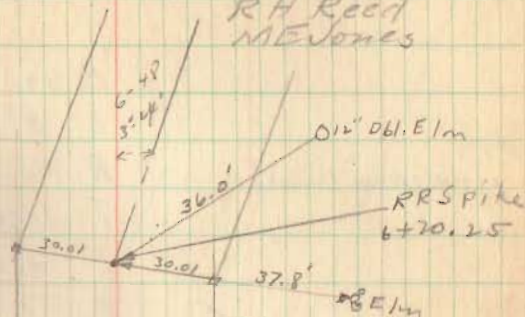
Page 135.

Sta 6+70.25 (Mon. (Hubs Set))

1+00 Mon. (Hubs Set)

(Not)

July 25, 1940 38
E R Cort
G W. Wilgus
R H Reed
M E Jones



Sec. 29 T1 R8.

Luther H. Pool

1825

5H
Route 69

97.02

62.8

Smith & Pool

RR Spike
sta 0+00

Δ $12^{\circ} 15'$
 D $8^{\circ} 0'$
 P.T. $18+4.7$ Mon. (Hubs Set)
 R 716.78
 T 76.48 ✓ 76.92
 E 4.08 ✓ 4.11
 L 103.125

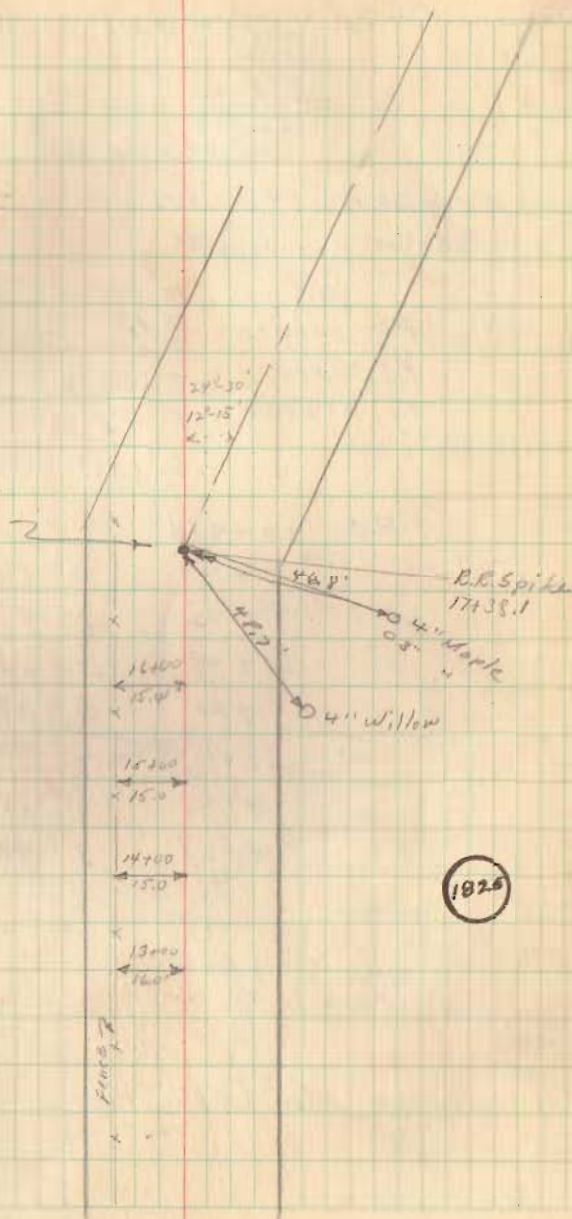
P.C.	16+616		PC 16+616
	+75'	$0^{\circ} 32'$	PI 17+381
	17+00	$1^{\circ} 32'$	PT 18+147
	+25'	$2^{\circ} 32'$	
	+50	$3^{\circ} 32'$	
	+75'	$4^{\circ} 32'$	
	18+00	$5^{\circ} 31'$	
PT.	19+47	$6^{\circ} 07' 30''$	

P.C.
 16+616 Mon. (Hubs Set)

12+00 - Mon. (Hubs Set)

$21+14.7$
 $18+4.7$
 $\hline 3.00$

R.R. Spk. Found
 Set 11" Bar
 11/22/01
 D.L.O.



P.C. = 24+05.9
 +25 10°-38'
 +50 5°-45'
 +75 5°-53'
 25+100 8°-00'
 +25 10°-08'
 +45.2 11°-50'-30"

P.T. = 25+45.2 Mon (Hub & Set)

P.C. = 24+05.9 Mon (Hub & Set)

PC 20+474
 PI 21+147
 PT 21+807
 Δ 17° 20'
 D 13° 0'
 R 41.684
 T 67.31
 E 5.10
 L 183.

PC 20+474
 +50 0° 10'
 +70 1° 48'
 21+00 3° 25'
 +20 5° 03'
 +60 6° 40'
 +75 8° 18'
 P.T. +80.7 8° 40'

P.T. = 21+10.7 Mon (Hub & Set)

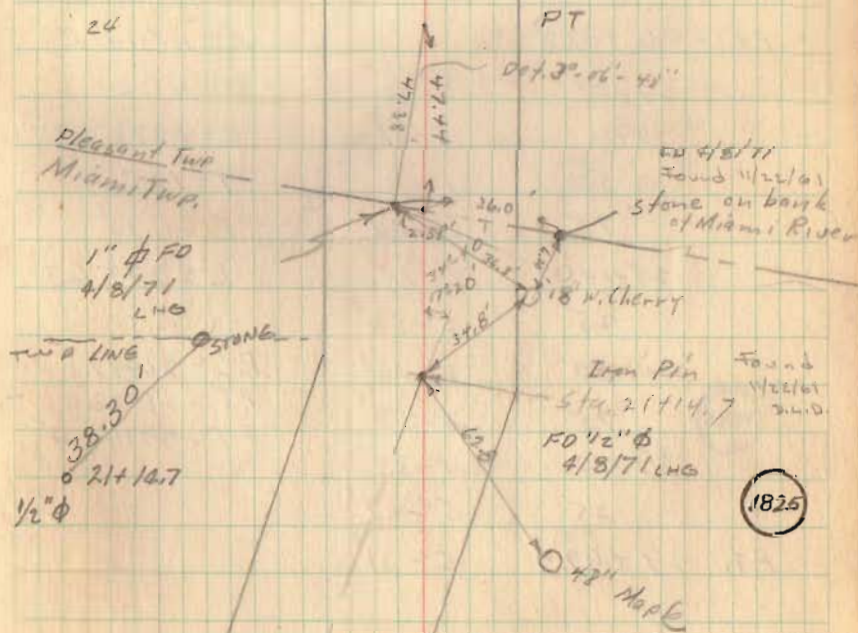
P.C. = 20+47.4 Mon (Hub & Set)

P.C. = Sta. 24+05.9
 P.I. = " 24+76.9
 P.T. = 25+45.2

28+23
 25+45.2
 277.8
 71
 348.8
 24+12.9
 21+80.7
 296.2
 67.3
 363.5

67.31
 47.44
 19.87

24



Δ = 23° - 41'
 P = 17° E = 7.86'
 R = 338.27' L = 139.31
 T = 71.0'

Hub = 24+76.9

23-41'

47° 22'

Hub Found
 Set 1" Bar
 11/22/61
 D.C.D.

FO 1" φ 4/8/71
 36.0
 2.6
 33.4

PT

Dist. 3'-06"-45"

FO 4/8/71
 Found 11/22/61
 Stone on bank
 of Miami River

Iron Pin Found
 11/22/61
 2410

Sta. 21+14.7
 FO 1/2" φ
 4/8/71 LHO

P.T. - 29+47.4 Mon. Lethanly Hub. Set.

P.C. 26+97.8 Mon. (Hubs Set)

P.C. - 26+97.8

27+00 - 0°-03'

27+25 0°-37'

50 10-10'

75 10-44'

28+00 2°-18'

25 2°-52'

50 3°-25'

75 3°-59'

29+10 4°-33'

25 5°-07'

P.T. 29+47.4 5°-37'

A = 11°-14' R

D = 4°-30'

R = 1273.57'

T = 125.19

E = 6.15

L = 249.63

P.C. = 26+97.8

PI = 28+23.0

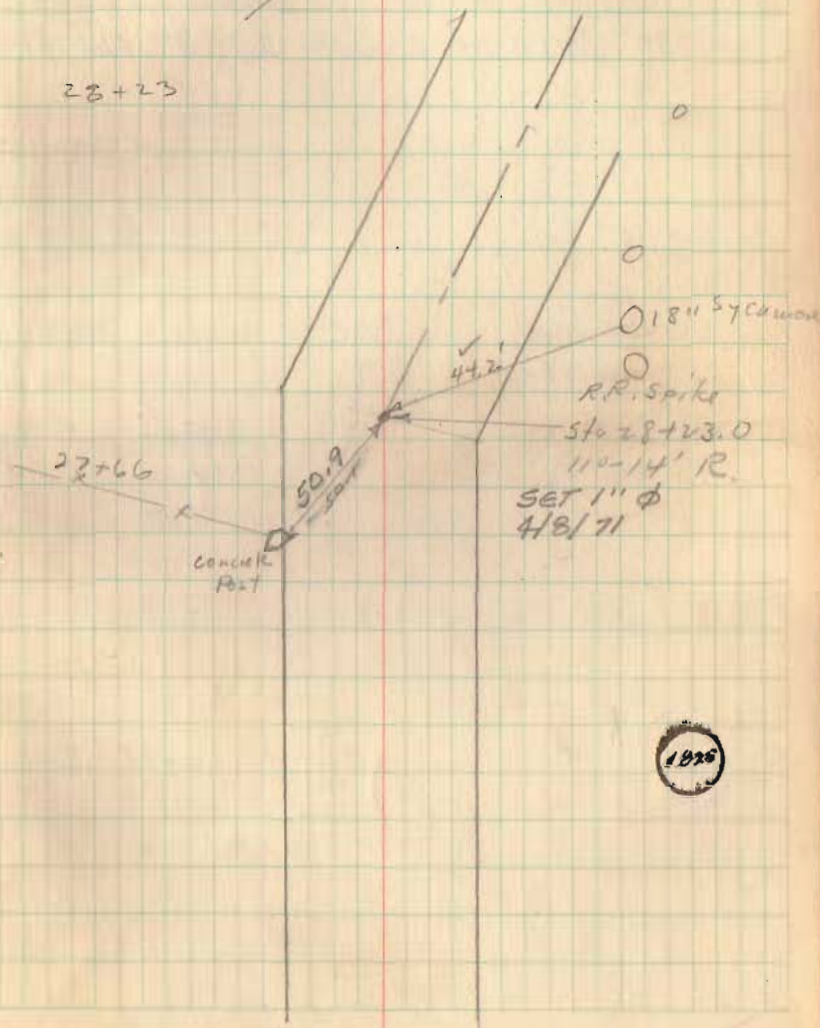
PT = 29+47.4

28+23
25+45.2

1277.8
71

348.8

28+23



SUPER ELEVATION .083 PER FT OF WIDTH

20' - 1.66

26' - 2.758

13' - 1.379

B.M. NAIL IN FOOT OF 18" LOCUST TREE
30' WEST OF & STA. 29+37 ELEV 971.11

$$\begin{array}{r} 31+38.9 \\ 28.23 \\ \hline 3 \\ 15.9 \end{array}$$

P.T. - 32+44.5 Mon.

(Hub Sect.)

P.C. 30+31.6

+50 0°-44'

+75 1°-44'

31+00 2°-44'

+25 3°-44'

+50 4°-44'

+75 5°-44'

32+00 6°-44'

+25 7°-44'

P.T. 32+44.5 8°-31'

P.C. 30+31.6 Mon left only
(Hub Sect.)

17-04 17-05
329-08 32-10

42

$\Delta = 17^{\circ}02'$

$D = 8^{\circ}$

$R = 716.78$

$T = 107.30'$

$E = 7.98$

$L = 212.92$

P.C. = sta. 30+31.6

P.I. = " 31+38.9

P.T. = 32+44.5

