

PEZID 9-24-00 SMJ/ok

Lee Surveying and Mapping Co., Inc.

Land Surveys • Topography • Subdivisions • Construction Layout

117 N. Madriver St.
Bellefontaine OH 43311



Phone: (937) 593-7335
Fax: (937) 593-7444

UPTON 30.844 ACRE

Lying in Section 23, Town 3, Range 13, Village of Quincy, Miami Township, Logan County, Ohio.

Being out of the Douglas S. Upton 52.59 acre tract as deeded and described in Official Record 329, Page 88 of the Logan County Records of Deeds and being more particularly described as follows:

Commencing on a 1 inch square iron bar found at the southwest corner of Lot 245 of Loffers Addition (Plat Cabinet A, Slide 100) on the east right-of-way of Miami Street.

THENCE, with the original south line of Loffers Addition, S 85°-02'-00"E, a distance of 496.00 feet to a 6 inch wood post found.

THENCE, with the east line of Loffers Addition extended and the east line of Foster Street (variable widths), S 5°-29'-57"W, a distance of 15.00 feet to a 5/8 inch iron rod set at the TRUE POINT OF BEGINNING.

THENCE, S 85°-02'-00"E, a distance of 20.00 feet to a 5/8 inch iron rod set.

THENCE, N 05°-29'-57"E, a distance of 1286.48 feet to a 5/8 inch iron rod set.

THENCE, S 85°-01'-00"E, a distance of 361.10 feet to a 5/8 inch iron rod set.

THENCE, S 26°-42'-52"E, a distance of 501.80 feet to a 5/8 inch iron rod set.

THENCE, S 79°-02'-13"E, a distance of 108.85 feet to a 5/8 inch iron rod set.

THENCE, S 06°-13'-54"W, a distance of 418.01 feet to a 5/8 inch iron rod set.

THENCE, S 82°-50'-24"E, a distance of 556.60 feet to a 5/8 inch iron rod set.

THENCE, with the west line of the Anthony Lee Upton 152.47 acre tract (O.R. 129, Pg. 619), S 06°-20'-13"W, a distance of 617.24 feet to a 6 inch wood post found.

THENCE, with the north lines of the George A. Wells 5.748 acre tract (O.R. 503, Pg. 387) and the Catherine E. Wells 1.277 acre tract (O.R. 236, Pg. 906), N 85°-03'-16"W, a distance of 918.22 feet to a 5/8 inch iron rod found.

THENCE, with the north lines of the Ester M. Triplett one-half acre tract (O.R. 826, Pg. 346), the Pamela J. Houchin 1 acre tract (O.R. 80, Pg. 980) and the Clyde Ricky Raymond Watkins 1 acre tract (O.R. 407, Pg. 480), N 84°-45'-08"W, a distance of 380.76 feet to a 5/8 inch iron rod set.

INDEXED ON MAP
3135 10-1

Lee Surveying and Mapping Co., Inc.

Land Surveys • Topography • Subdivisions • Construction Layout

117 N. Madriver St.
Bellefontaine OH 43311



Phone: (937) 593-7335
Fax: (937) 593-7444

THENCE, with the east line of the Millard L. Shaffer 0.71 acre tract (Vol. 408, Pg. 368), N 05°-29'-57"E, a distance of 206.83 feet to the point of beginning.

Containing 30.844 acres.

The basis for bearings is the original south line of Loffers Addition, being S 85°-02'-00"E, and all other bearings are from angles and distances measured in a field survey by Lee Surveying and Mapping Co., Inc. on September 19, 2008.

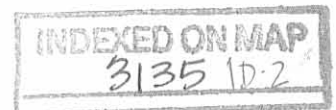


Description prepared by:

A handwritten signature in black ink that reads 'William K. Bruce'.

William K. Bruce
Professional Surveyor 7437
September 23, 2008

4700098



Lee Surveying and Mapping Co., Inc.

Land Surveys • Topography • Subdivisions • Construction Layout

117 N. Madriver St.
Bellefontaine OH 43311



Phone: (937) 593-7335
Fax: (937) 593-7444

UPTON INGRESS/EGRESS EASEMENT #1

Lying in Section 23, Town 3, Range 13, Village of Quincy, Miami Township, Logan County, Ohio.

Being an ingress/egress easement over a portion of the Douglas S. Upton 52.59 acre tract as deeded and described in Official Record 329, Page 88 of the Logan County Records of Deeds and being more particularly described as follows:

Commencing on a 1 inch square iron bar found at the southwest corner of Lot 245 of Loffers Addition (Plat Cabinet A, Slide 100) on the east right-of-way of Miami Street.

THENCE, with the original south line of Loffers Addition, S 85°-02'-00"E, a distance of 496.00 feet to a 6 inch wood post found.

THENCE, with the east line of Loffers Addition extended and the east line of Foster Street (variable widths), S 5°-29'-57"W, a distance of 15.00 feet to a 5/8 inch iron rod set at the TRUE POINT OF BEGINNING.

THENCE, S 85°-02'-00"E, a distance of 20.00 feet to a 5/8 inch iron rod set.

THENCE, S 05°-29'-57"W, a distance of 15.00 feet to a point.

THENCE, N 85°-02'-00"W, a distance of 20.00 feet to a point.

THENCE, with the east line of Foster Street, N 05°-29'-57"E, a distance of 15.00 feet to the point of beginning.

The basis for bearings is the original south line of Loffers Addition, being S 85°-02'-00"E, and all other bearings are from angles and distances measured in a field survey by Lee Surveying and Mapping Co., Inc. on September 19, 2008.



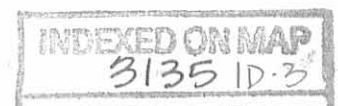
ORIGINAL STAMP IN GREEN

Description prepared by:

A handwritten signature in black ink that reads 'William K. Bruce'.

William K. Bruce
Professional Surveyor 7437
September 23, 2008

4700098



Lee Surveying and Mapping Co., Inc.

Land Surveys • Topography • Subdivisions • Construction Layout

117 N. Madriver St.
Bellefontaine OH 43311



Phone: (937) 593-7335
Fax: (937) 593-7444

UPTON INGRESS/EGRESS EASEMENT #2

Lying in Section 23, Town 3, Range 13, Village of Quincy, Miami Township, Logan County, Ohio.

Being an ingress/egress easement over a portion of the Douglas S. Upton 52.59 acre tract as deeded and described in Official Record 329, Page 88 of the Logan County Records of Deeds and being more particularly described as follows:

Commencing on a 1 inch square iron bar found at the southwest corner of Lot 245 of Loffers Addition (Plat Cabinet A, Slide 100) on the east right-of-way of Miami Street.

THENCE, with the original south line of Loffers Addition, S 85°-02'-00"E, a distance of 496.00 feet to a 6 inch wood post found at the TRUE POINT OF BEGINNING.

THENCE, S 85°-02'-00"E, a distance of 20.00 feet to a point.

THENCE, S 05°-29'-57"W, a distance of 15.00 feet to a 5/8 inch iron rod set.

THENCE, N 85°-02'-00"W, a distance of 20.00 feet to a 5/8 inch iron rod set.

THENCE, with the east line of Foster Street (variable widths), N 05°-29'-57"E, a distance of 15.00 feet to the point of beginning.

The basis for bearings is the original south line of Loffers Addition, being S 85°-02'-00"E, and all other bearings are from angles and distances measured in a field survey by Lee Surveying and Mapping Co., Inc. on September 19, 2008.



ORIGINAL STAMP IN GREEN

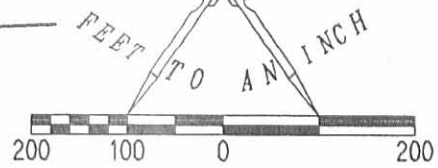
Description prepared by:

William K. Bruce
Professional Surveyor 7437
September 23, 2008

4700098



SCALE
200



LEGEND:

- ⊕ CONCRETE POST FOUND
- ⊠ 1 INCH SQUARE BAR FOUND
- ⊙ 6 INCH WOOD POST FOUND
- 5/8 INCH IRON ROD SET
- 5/8 INCH IRON ROD FOUND



LRB ENTERPRISES INC.
2.11 ACRES
O.R. 558, PG. 729

DOUGLAS S. UPTON
52.59 ACRES
O.R. 329, PG. 88

TRENT L. FAY
0.87 ACRE
O.R. 893, PG. 582

DELMAR M. PELLMAN 1/2 ACRE
VOL. 360, PG. 660

MICHAEL V. EDENS
1.67 ACRES
O.R. 114, PG. 75

KEITH E. THOMPSON
1 ACRE, O.R. 420, PG. 638

H. KEITH DAVIS
1-1/2 ACRES
O.R. 88, PG. 31
TRACT II

H. KEITH DAVIS, 0.86 ACRE
O.R. 88, PG. 31, TRACT I

MIAMI STREET
LOFFERS ADDITION
P.C. A, SL. 100
LOT 246
LOT 247
LOT 248
LOT 249
LOT 250
LOT 251

FOSTER STREET
(VARIABLE WIDTHS)
O.R. 929, PG. 30

MILLARD L. SHAFFER
0.71 ACRE
VOL. 408, PG. 368

CLYDE RICKY RAYMOND WATKINS
1 ACRE
O.R. 407, PG. 480

PAMELA K. HOUGHIN
1 ACRE
O.R. 80, PG. 980

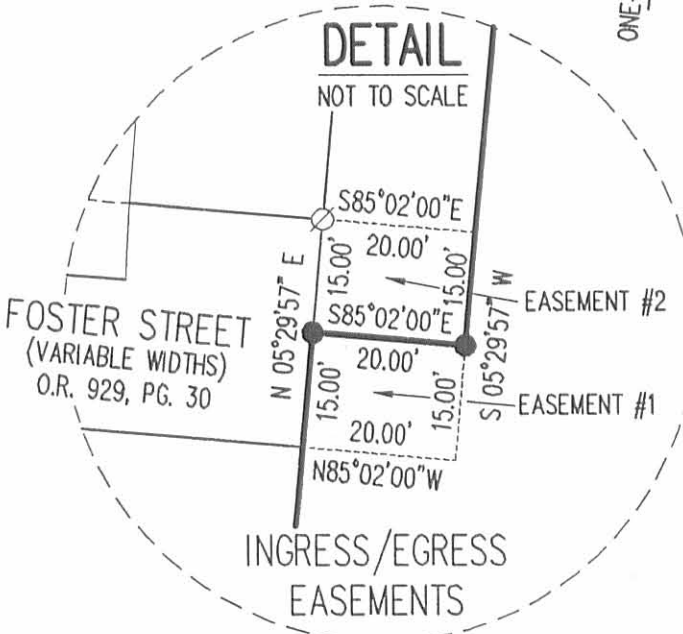
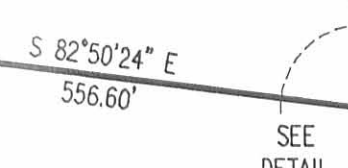
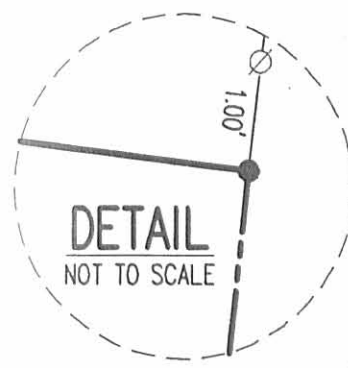
ESTER M. TRIPLETT
ONE-HALF ACRE, O.R. 826, PG. 346

CATHERINE E. WELLS
1.277 ACRES
O.R. 236, PG. 906

GEORGE A. WELLS
5.748 ACRES
O.R. 503, PG. 387

ANTHONY LEE UPTON
152.47 ACRES
O.R. 129, PG. 619

30.844 ACRES



**SURVEY OF 30.844 ACRES OUT OF THE
DOUGLAS S. UPTON
52.59 ACRE TRACT
OFFICIAL RECORD 329, PAGE 88
SECTION 23, TOWN 3, RANGE 13
VILLAGE OF QUINCY
MIAMI TOWNSHIP
LOGAN COUNTY, OHIO**

SURVEYED BY:

William K. Bruce
WILLIAM K. BRUCE
PROFESSIONAL SURVEYOR 7437
SEPTEMBER 19, 2008

COPYRIGHT 2008 BY:
LEE SURVEYING & MAPPING CO., INC.
117 North Madriver Street
BELLEFONTAINE, OHIO 43311
(937) 593-7335
surveys@lsmc.us
KSS D0908 4700098 L-4700-3



ORIGINAL STAMP IN GREEN

2 WORKING DAYS
BEFORE YOU DIG
CALL TOLL FREE **800-362-2764**
OHIO UTILITIES PROTECTION SERVICE.

INDEXED ON MAP
3135 1P

Morgan Survey Quincy Miami Township May 1952 52.59 Acres

The following described land in the Village of Quincy, Miami Township, Logan County Ohio and being in Section 23 Town 3 Range 13

Beginning at a square concrete fence post in the west line of F. Paul Rowe's 60.84 acres tract and in the south right of way fence of the C.C.C. & ST L Rail Road and being 179.5 feet south of the center line of the south tract of said Rail Road thence with the present fence and the West side of said Rowe land the following five courses and distances S. $11^{\circ} - 03'$ E. 390.6 feet ; S. $13^{\circ} - 04'$ E. 300.0 feet ; S. $6^{\circ} - 33'$ E. 225.0 feet ; S. $5^{\circ} - 09'$ E. 250.0 feet ; S. $9^{\circ} - 00'$ E. 617.5 feet to a wood post at the N.E. corner to Cora F. Clark's 53.87 acre tract thence with the north side of said Cora F. Clark land S. $79^{\circ} - 17'$ ^{918.0 feet} W. to her N.W. corner which is also the N.E. corner of Alva A. Spurgeon's 0.50 acre tract and said corner being marked by a wood post thence along the North side of said Spurgeon's tract and the north side of J.W. Walborn's 1.00 acre tract and also the north side of George M. Styker's 1.00 acre tract S. $79^{\circ} - 44'$ W. 384.0 feet to a locust post at the N.W. corner of the Styker land and in the East side of Albert Speece's 4.15 acre tract thence N. $10^{\circ} - 14'$ W. 1703.0 feet to a square concrete right of way fence post in the south fence line of the C.C.C. & St. L. Rail Road the last described line passing the N.E. corner of the Speece 4.15 acre tract at 222.0 feet and also being along the East side of Lots 251 250 249 248 247 and 246 and the East side of Perry E. Coffman's 1.30 acre tract, the East side of Elsie Short's 1.00 acre tract the East side of E.H. Seigel's 1.67 acre tract the East side of V.L. ~~Short's~~ ^{Hook's} 0.80 acre tract the East side of the Marvin's 0.87 acre tract and the East side of Clyde E. Stiles's land passing the N.W. corner of the Stiles land at 1693.0 feet thence with the South Right of way fence of the C.C.C. & St L Rail road the following five courses and distances

2D-1
 35
 35
 35

Morgan Survey continued from Sheet # I

N. 70° - 43' E. 271.3 feet ; S. 81° - 44' E. 252.4 feet ; N. 70° - 53' E.
449.8 feet ; N. 19° - 24' E. 33.7 feet N. 74° - 33' E. 129.9 feet and
N. 76° - 45' E. ~~234.72~~^{235.0} feet to the place of beginning the angle of the last
five courses being marked by square concrete right of way fence post said
tract containing 52.59 acres.

cc
E.K.Core,
Logan County Engineer.

3135
20-2
INDEXED ON MAP

REID 3-24-11 smy de

Lee Surveying and Mapping Co., Inc.

Land Surveys • Topography • Subdivisions • Construction Layout

117 N. Madriver St.
Bellefontaine OH 43311



Phone: (937) 593-7335
Fax: (937) 593-7444
surveys@lsminc.us

UPTON 25 FEET WIDE VEGETATIVE GROWTH MANAGEMENT EASEMENT

Lying in Section 23, Town 3, Range 13, Village of Quincy, Miami Township, Logan County, Ohio.

Being a 25 feet wide vegetative growth management easement over a portion of the Anthony Lee Upton 152.47 acre tract as deeded and described in Official Record 269, Page 633 of the Logan County Records of Deeds and being more particularly described as follows:

Commencing on a stone found on the northeast corner of Section 23.

THENCE, with the east line of Section 23, S 00°-00'-00"E, a distance of 371.33 feet to a 5/8 inch iron rod found on the south right-of-way of the CSX Railroad (formerly the C. C. C. & St. L. Ry. Co.), passing a railroad spike found on the center-line of County Highway 63 (60 feet wide) at 16.20 feet, a 5/8 inch iron rod set at 46.20 feet and a 5/8 inch iron rod found on the north right-of-way of the CSX Railroad at 219.39 feet.

THENCE, with the south right-of-way of the CSX Railroad, the following two courses:

S 82°-41'-40"W, a distance of 770.91 feet to a 5 inch concrete post found.

S 80°-50'-10"W, a distance of 566.27 feet to a 5/8 inch iron rod set, passing a 5/8 inch iron rod set at 551.12 feet.

THENCE, S 01°-07'-19"E, a distance of 299.69 feet to a point at the TRUE POINT OF BEGINNING, referenced by a 5/8 inch iron rod set bearing S 01°-07'-19"E, a distance of 12.50 feet.

THENCE, with the center-line of said easement, the following four courses:

S 89°-58'-58"W, a distance of 1185.14 feet to a point.

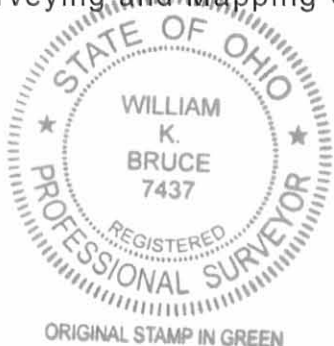
S 00°-57'-59"E, a distance of 525.67 feet to a point.

S 29°-27'-33"E, a distance of 730.15 feet to a point.

S 20°-10'-59"E, a distance of 669.04 feet to a point at the terminus of this easement, referenced by a 5/8 inch iron rod set bearing N 89°-39'-01"E, a distance of 13.29 feet.

The sidelines of said easement to be shortened or prolonged to meet at angle point intersections.

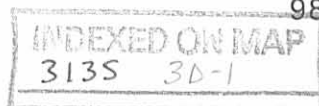
The basis for bearings is the north line of Section 23, being N 89°-43'-03"E, and all other bearings are from angles and distances measured in a field survey by Lee Surveying and Mapping Co., Inc. on March 11, 2011.



Description prepared by:

A handwritten signature in black ink that reads 'William K. Bruce'.

William K. Bruce
Professional Surveyor 7437
March 23, 2011



9830111

Lee Surveying and Mapping Co., Inc.

Land Surveys • Topography • Subdivisions • Construction Layout

117 N. Madriver St.
Bellefontaine OH 43311



Phone: (937) 593-7335
Fax: (937) 593-7444
surveys@lsminc.us

UPTON 14.855 ACRES

Lying in Section 23, Town 3, Range 13, Village of Quincy, Miami Township, Logan County, Ohio.

Being out of the Anthony Lee Upton 152.47 acre tract as deeded and described in Official Record 269, Page 633 of the Logan County Records of Deeds and being more particularly described as follows:

Commencing on a stone found on the northeast corner of Section 23.

THENCE, with the north line of Section 23 and the south line of the Thomas L. Engelhaupt 81.97 acre tract (O.R. 723, Pg. 29, Parcel II) and within the right-of-way of County Highway 63, S 89°-43'-03"W, a distance of 1442.40 feet to a MAG nail set at the TRUE POINT OF BEGINNING.

THENCE, S 02°-26'-42"E, a distance of 216.34 feet to a 5/8 inch iron rod set, passing a 5/8 inch iron rod set on the south right-of-way of County Highway 63 (60 feet wide) at 37.17 feet.

THENCE, S 86°-45'-02"E, a distance of 33.38 feet to a 5/8 inch iron rod set.

THENCE, S 06°-49'-25"E, a distance of 242.45 feet to a 5/8 inch iron rod set on the north right-of-way of the CSX Railroad (formerly the C. C. C. & St. L. Ry. Co.).

THENCE, with the north right-of-way of the CSX Railroad, the following five courses:

S 80°-50'-10"W, a distance of 101.93 feet to a 5/8 inch iron rod set.

N 85°-21'-29"W, a distance of 206.20 feet to a 5 inch concrete post found.

S 80°-59'-42"W, a distance of 199.32 feet to a 5 inch concrete post found.

S 67°-59'-05"W, a distance of 222.61 feet to a 5 inch concrete post found.

S 80°-52'-47"W, a distance of 561.88 feet to a 5/8 inch iron rod found.

THENCE, with east lines of the Roger N. Allen 0.772 acre tract (O.R. 34, Pg. 607) the Charles L. Allen 0.860 acre tract (O.R. 34, Pg. 584) and the Jerry Allen 1.07 acre tract (O.R. 842, Pg. 529), N 00°-27'-18"E, a distance of 413.13 feet to a 5/8 inch iron rod set.

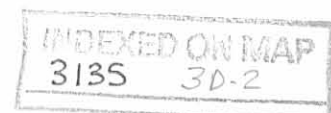
Thence with an easterly line of the said 1.07 acre tract, N 51°-24'-56"E, a distance of 296.81 feet to a MAG nail set on the center-line of County Highway 63, passing a 5/8 inch iron rod set at 240.37 feet.

THENCE, with the center-line of County Highway 63, the following two courses:

S 83°-31'-22"W, a distance of 162.52 feet to a 1/2 inch iron rod found.

S 78°-49'-44"W, a distance of 70.65 feet to a MAG nail set.

THENCE, with the east line of the William L. Brandyberry 1.639 acre tract (O.R. 306, Pg. 956), N 00°-27'-18"E, a distance of 89.96 feet to a stone found on the northwest corner of the northeast quarter of Section 23, passing a 5/8 inch iron rod set at 30.63 feet.



Lee Surveying and Mapping Co., Inc.

Land Surveys • Topography • Subdivisions • Construction Layout

117 N. Madriver St.
Bellefontaine OH 43311



Phone: (937) 593-7335
Fax: (937) 593-7444
surveys@lsminc.us

THENCE, with the north line of Section 23, and the south lines of the Ronald R. Allinger and Sara L. Allinger, Trustees original 101 acres (O.R. 608, Pg. 466) and the aforesaid 81.97 acre tract, N 89°-43'-03"E, a distance of 1187.61 feet to the point of beginning.

Containing 14.855 acres, of which 1.176 acres are within the highway right-of-way. There are 12.755 acres within the Village of Quincy and 2.100 acres within Miami Township.

Property is subject to any and all previous easements and rights-of-way of record.

The basis for bearings is the north line of Section 23, being N 89°-43'-03"E, and all other bearings are from angles and distances measured in a field survey by Lee Surveying and Mapping Co., Inc. on March 11, 2011.



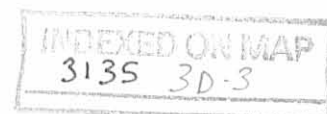
ORIGINAL STAMP IN GREEN

Description prepared by:

A handwritten signature in black ink that reads 'William K. Bruce'.

William K. Bruce
Professional Surveyor 7437
March 11, 2011

9830111

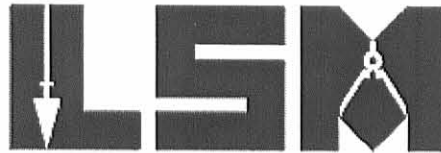


REV'D 3-17-11 smj ok

Lee Surveying and Mapping Co., Inc.

Land Surveys • Topography • Subdivisions • Construction Layout

117 N. Madriver St.
Bellefontaine OH 43311



Phone: (937) 593-7335
Fax: (937) 593-7444
surveys@lsminc.us

UPTON 105.747 ACRES

Lying in Section 23, Town 3, Range 13, Village of Quincy, Miami Township, Logan County, Ohio.

Being out of the Anthony Lee Upton 152.47 acre tract as deeded and described in Official Record 269, Page 633 of the Logan County Records of Deeds and being more particularly described as follows:

Commencing on a stone found on the northeast corner of Section 23.

THENCE, with the east line of Section 23, S 00°-00'-00"E, a distance of 371.33 feet to a 5/8 inch iron rod found on the south right-of-way of the CSX Railroad (formerly the C. C. C. & St. L. Ry. Co.) at the TRUE POINT OF BEGINNING, passing a railroad spike found on the center-line of County Highway 63 (60 feet wide) at 16.20 feet, a 5/8 inch iron rod set at 46.20 feet and a 5/8 inch iron rod found on the north right-of-way of the CSX Railroad at 219.39 feet.

THENCE, with the east line of Section 23 and the west line of the Christopher G. Helman, Successor Trustee 88.580 acre tract (O.R. 676, Pg. 469, Tract IV), S 00°-00'-00"E, a distance of 2295.88 feet to a 5/8 inch iron rod found on the southeast corner of the northeast quarter of Section 23.

THENCE, with the south line of the northeast quarter of Section 23 and the north lines of the Robert Dean Cook 40.644 acre tract (O.R. 486, Pg. 949), the Michael T. Dappert 9.377 acre tract (O.R. 704, Pg. 277) and the George A. Wells 5.748 acre tract (O.R. 503, Pg. 387), S 89°-39'-01"W, a distance of 2662.07 feet to a 5/8 inch iron rod set at the remains of a 6 inch wood post found on the center of Section 23.

THENCE, with the east line of the Lyn A. Davidson 30.844 acre tract (O.R. 930, Pg. 702, Tract I), N 00°-55'-01"E, a distance of 30.01 feet to a 5/8 inch iron rod set.

THENCE, N 89°-39'-01"E, a distance of 770.67 feet to a 5/8 inch iron rod set.

THENCE, N 20°-10'-59"W, a distance of 674.56 feet to a 5/8 inch iron rod set.

THENCE, N 29°-27'-33"W, a distance of 727.99 feet to a 5/8 inch iron rod set.

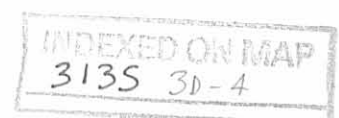
THENCE, N 00°-57'-59"W, a distance of 509.79 feet to a 5/8 inch iron rod set.

THENCE, N 89°-58'-58"E, a distance of 1187.67 feet to a 5/8 inch iron rod set, passing a 5/8 inch iron rod set on the center-line of a 30 feet wide ingress/egress easement at 1172.67 feet.

THENCE, N 01°-07'-19"W, a distance of 314.60 feet to a 5/8 inch iron rod set on the south right-of-way of the CSX Railroad.

THENCE, with the south right-of-way of the CSX Railroad, the following two courses:

N 80°-50'-10"E, a distance of 551.12 feet to a 5 inch concrete post found.



Lee Surveying and Mapping Co., Inc.

Land Surveys • Topography • Subdivisions • Construction Layout

117 N. Madriver St.
Bellefontaine OH 43311



Phone: (937) 593-7335
Fax: (937) 593-7444
surveys@lsminc.us

N 82°-41'-40"E, a distance of 770.91 feet to the point of beginning.

Containing 105.747 acres. There are 27.290 acres within the Village of Quincy and 78.457 acres within Miami Township.

Property is subject to any and all previous easements and rights-of-way of record.

The basis for bearings is the north line of Section 23, being N 89°-43'-03"E, and all other bearings are from angles and distances measured in a field survey by Lee Surveying and Mapping Co., Inc. on March 11, 2011.



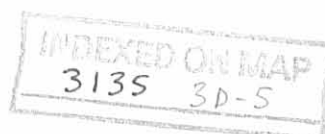
ORIGINAL STAMP IN GREEN

Description prepared by:

A handwritten signature in black ink that reads 'William K. Bruce'.

William K. Bruce
Professional Surveyor 7437
March 11, 2011

9830111



REC'D 3-17-11 gmy ok

Lee Surveying and Mapping Co., Inc.

Land Surveys • Topography • Subdivisions • Construction Layout

117 N. Madriver St.
Bellefontaine OH 43311



Phone: (937) 593-7335
Fax: (937) 593-7444
surveys@lsminc.us

UPTON 30 FEET WIDE INGRESS/EGRESS EASEMENT #1

Lying in Section 23, Town 3, Range 13, Miami Township, Logan County, Ohio.

Being a 30 feet wide ingress/egress easement over a portion of the Anthony Lee Upton 152.47 acre tract as deeded and described in Official Record 269, Page 633 of the Logan County Records of Deeds and being more particularly described as follows:

Commencing on a stone found on the northeast corner of Section 23.

THENCE, with the north line of Section 23 and the south line of the Thomas L. Engelhaupt 81.97 acre tract (O.R. 723, Pg. 29, Parcel II) and within the highway right-of-way of County Highway 63, S 89°-43'-03"W, a distance of 1442.40 feet to a MAG nail set.

THENCE, S 02°-26'-42"E, a distance of 37.17 feet to a 5/8 inch iron rod set on the south right-of-way of County Highway 63 (60 feet wide).

THENCE, with the south right-of-way of County Highway 63, S 89°-55'-21"E, a distance of 15.38 feet to a railroad spike set at the TRUE POINT OF BEGINNING.

THENCE, with the center-line of said easement, the following two courses:

S 12°-45'-37"E, a distance of 182.84 feet to a 5/8 inch iron rod set.

S 06°-49'-25"E, a distance of 242.61 feet to a 5/8 inch iron rod set on the north right-of-way of the CSX Railroad (formerly the C. C. C. & St. L. Ry. Co.) at the terminus of said easement.

The sidelines of said easement to be shortened or prolonged to meet at angle point intersections.

The basis for bearings is the north line of Section 23, being N 89°-43'-03"E, and all other bearings are from angles and distances measured in a field survey by Lee Surveying and Mapping Co., Inc. on March 11, 2011.

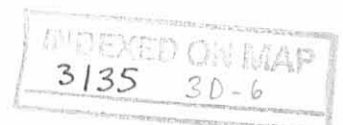


ORIGINAL STAMP IN GREEN

Description prepared by:

William K. Bruce
Professional Surveyor 7437
March 11, 2011

9830111



REC'D 3-17-11 SMM OK

Lee Surveying and Mapping Co., Inc.

Land Surveys • Topography • Subdivisions • Construction Layout

117 N. Madriver St.
Bellefontaine OH 43311



Phone: (937) 593-7335
Fax: (937) 593-7444
surveys@lsminc.us

UPTON 30 FEET WIDE INGRESS/EGRESS EASEMENT #2

Lying in Section 23, Town 3, Range 13, Miami Township, Logan County, Ohio.

Being a 30 feet wide ingress/egress easement over a portion of the Anthony Lee Upton 152.47 acre tract as deeded and described in Official Record 269, Page 633 of the Logan County Records of Deeds and being more particularly described as follows:

Commencing on a stone found on the northeast corner of Section 23.

THENCE, with the east line of Section 23, S 00°-00'-00"E, a distance of 371.33 feet to a 5/8 inch iron rod found on the south right-of-way of the CSX Railroad (formerly the C. C. C. & St. L. Ry. Co.), passing a railroad spike found on the center-line of County Highway 63 (60 feet wide) at 16.20 feet, a 5/8 inch iron rod set at 46.20 feet and a 5/8 inch iron rod found on the north right-of-way of the CSX Railroad at 219.39 feet.

THENCE, with the south right-of-way of the CSX Railroad, the following two courses:

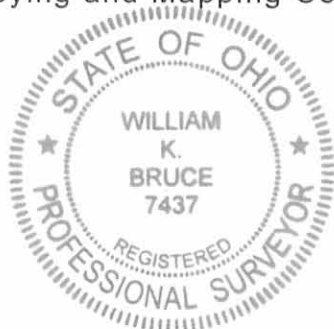
S 82°-41'-40"W, a distance of 770.91 feet to a 5 inch concrete post found.

S 80°-50'-10"W, a distance of 566.27 feet to a 5/8 inch iron rod set at the TRUE POINT OF BEGINNING, passing a 5/8 inch iron rod set at 551.12 feet.

THENCE, with the center-line of said easement, S 01°-07'-19"E, a distance of 312.19 feet to a 5/8 inch iron rod set at the terminus of this easement.

The sidelines of said easement to be shortened or prolonged to meet at angle point intersections.

The basis for bearings is the north line of Section 23, being N 89°-43'-03"E, and all other bearings are from angles and distances measured in a field survey by Lee Surveying and Mapping Co., Inc. on March 11, 2011.

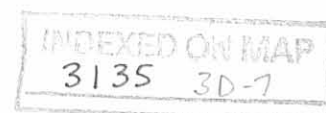


ORIGINAL STAMP IN GREEN

Description prepared by:

William K. Bruce
Professional Surveyor 7437
March 11, 2011

9830111



RECID 3-17-11 8MM OK

Lee Surveying and Mapping Co., Inc.

Land Surveys • Topography • Subdivisions • Construction Layout

117 N. Madriver St.
Bellefontaine OH 43311



Phone: (937) 593-7335
Fax: (937) 593-7444
surveys@lsminc.us

UPTON 60 FEET WIDE DRAINAGE EASEMENT #1

Lying in Section 23, Town 3, Range 13, Miami Township, Logan County, Ohio.

Being a 60 feet wide drainage easement over a portion of the Anthony Lee Upton 152.47 acre tract as deeded and described in Official Record 269, Page 633 of the Logan County Records of Deeds and being more particularly described as follows:

Commencing on a stone found on the northeast corner of Section 23.

THENCE, with the east line of Section 23, S 00°-00'-00"E, a distance of 371.33 feet to a 5/8 inch iron rod found on the south right-of-way of the CSX Railroad (formerly the C. C. C. & St. L. Ry. Co.), passing a railroad spike found on the center-line of County Highway 63 (60 feet wide) at 16.20 feet, a 5/8 inch iron rod set at 46.20 feet and a 5/8 inch iron rod found on the north right-of-way of the CSX Railroad at 219.39 feet.

THENCE, with the south right-of-way of the CSX Railroad, the following two courses:

S 82°-41'-40"W, a distance of 770.91 feet to a 5 inch concrete post found.

S 80°-50'-10"W, a distance of 551.12 feet to a 5/8 inch iron rod set.

THENCE, S 01°-07'-19"E, a distance of 314.60 feet to a 5/8 inch iron rod set at the TRUE POINT OF BEGINNING.

THENCE, with the center-line of said easement, N 54°-40'-48"W, a distance of 59.31 feet to a 5/8 inch iron rod set at the terminus of this easement.

The sidelines of said easement to be shortened or prolonged to meet at angle point intersections.

The basis for bearings is the north line of Section 23, being N 89°-43'-03"E, and all other bearings are from angles and distances measured in a field survey by Lee Surveying and Mapping Co., Inc. on March 11, 2011.



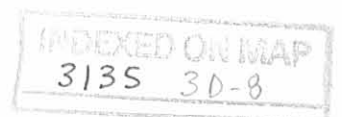
ORIGINAL STAMP IN GREEN

Description prepared by:

A handwritten signature in black ink that reads 'William K. Bruce'.

William K. Bruce
Professional Surveyor 7437
March 11, 2011

9830111



REC'D 3-17-11 SMJ BK

Lee Surveying and Mapping Co., Inc.

Land Surveys • Topography • Subdivisions • Construction Layout

117 N. Madriver St.
Bellefontaine OH 43311



Phone: (937) 593-7335
Fax: (937) 593-7444
surveys@lsminc.us

UPTON 60 FEET WIDE DRAINAGE EASEMENT #2

Lying in Section 23, Town 3, Range 13, Village of Quincy, Miami Township, Logan County, Ohio.

Being a 60 feet wide drainage easement over a portion of the Anthony Lee Upton 152.47 acre tract as deeded and described in Official Record 269, Page 633 of the Logan County Records of Deeds and being more particularly described as follows:

Commencing on a stone found on the northeast corner of Section 23.

THENCE, with the east line of Section 23, S 00°-00'-00"E, a distance of 371.33 feet to a 5/8 inch iron rod found on the south right-of-way of the CSX Railroad (formerly the C. C. C. & St. L. Ry. Co.), passing a railroad spike found on the center-line of County Highway 63 (60 feet wide) at 16.20 feet, a 5/8 inch iron rod set at 46.20 feet and a 5/8 inch iron rod found on the north right-of-way of the CSX Railroad at 219.39 feet.

THENCE, with the south right-of-way of the CSX Railroad, the following two courses:

S 82°-41'-40"W, a distance of 770.91 feet to a 5 inch concrete post found.

S 80°-50'-10"W, a distance of 551.12 feet to a 5/8 inch iron rod set.

THENCE, S 01°-07'-19"E, a distance of 314.60 feet to a 5/8 inch iron rod set.

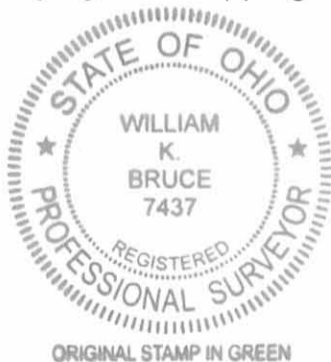
THENCE, S 89°-58'-58"W, a distance of 1187.67 feet to a 5/8 inch iron rod set, passing a 5/8 inch iron rod set at 15.00 feet.

THENCE, S 00°-57'-59"E, a distance of 509.79 feet to a 5/8 inch iron rod set at the TRUE POINT OF BEGINNING.

THENCE, with the center-line of said easement, N 65°-11'-13"W, a distance of 94.60 feet to a 5/8 inch iron rod set at the terminus of this easement.

The sidelines of said easement to be shortened or prolonged to meet at angle point intersections.

The basis for bearings is the north line of Section 23, being N 89°-43'-03"E, and all other bearings are from angles and distances measured in a field survey by Lee Surveying and Mapping Co., Inc. on March 11, 2011.

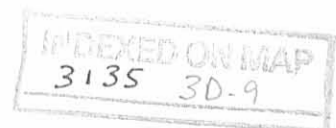


Description prepared by:

A handwritten signature in black ink that reads 'William K. Bruce'.

William K. Bruce
Professional Surveyor 7437
March 11, 2011

9830111



REV'D 3-17-11 SMY OK

Lee Surveying and Mapping Co., Inc.

Land Surveys • Topography • Subdivisions • Construction Layout

117 N. Madriver St.
Bellefontaine OH 43311



Phone: (937) 593-7335
Fax: (937) 593-7444
surveys@lsminc.us

UPTON 11.262 ACRES

Lying in Section 23, Town 3, Range 13, Miami Township, Logan County, Ohio.

Being out of the Anthony Lee Upton 152.47 acre tract as deeded and described in Official Record 269, Page 633 of the Logan County Records of Deeds and being more particularly described as follows:

Beginning on a stone found on the northeast corner of Section 23.

THENCE, with the east line of Section 23 and the west line of the Rodney L. Hogle, Jr., 2.657 acre tract (O.R. 857, Pg. 244), S 00°-00'-00"E, a distance of 219.39 feet to a 5/8 inch iron rod found on the north right-of-way of the CSX Railroad (formerly the C. C. C. & St. L. Ry. Co.), passing a railroad spike found on the center-line of County Highway 63 (60 feet wide) at 16.20 feet and a 5/8 inch iron rod set at 46.20 feet.

THENCE, with the north right-of-way of the CSX Railroad, the following two courses:

S 79°-02'-03"W, a distance of 795.10 feet to a 5 inch concrete post found.

S 80°-50'-09"W, a distance of 598.07 feet to a 5/8 inch iron rod set, passing a 5/8 inch iron rod set on the center-line of a 30 feet ingress/egress easement at 583.06 feet.

THENCE, N 06°-49'-25"W, a distance of 242.45 feet to a 5/8 inch iron rod set.

THENCE, N 86°-45'-02"W, a distance of 33.38 feet to a 5/8 inch iron rod set.

THENCE, N 02°-26'-42"W, a distance of 216.34 feet to a MAG nail set on the north line of Section 24, passing a 5/8 inch iron rod set at 179.17 feet.

THENCE, with the north line of Section 23, the south line of the Thomas L. Engelhaupt 81.97 acre tract (O.R. 723, Pg. 29, Parcel II) and within the right-of-way of County Highway 63, N 89°-43'-03"E, a distance of 1442.40 feet to the point of beginning.

Containing 11.262 acres, of which 1.379 acres are within the highway right-of-way.

Property is subject to any and all previous easements and rights of way of record.

The basis for bearings is the north line of Section 23, being N 89°-43'-03"E, and all other bearings are from angles and distances measured in a field survey by Lee Surveying and Mapping Co., Inc. on March 11, 2011.



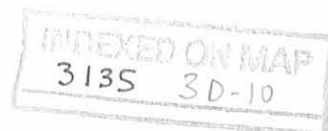
ORIGINAL STAMP IN GREEN

Description prepared by:

Handwritten signature of William K. Bruce in black ink.

William K. Bruce
Professional Surveyor 7437
March 11, 2011

9830111



REVISED 3-17-11 GMM OK

Lee Surveying and Mapping Co., Inc.

Land Surveys • Topography • Subdivisions • Construction Layout

117 N. Madriver St.
Bellefontaine OH 43311



Phone: (937) 593-7335
Fax: (937) 593-7444
surveys@lsminc.us

UPTON 21.867 ACRES

Lying in Section 23, Town 3, Range 13, Village of Quincy, Miami Township, Logan County, Ohio.

Being out of the Anthony Lee Upton 152.47 acre tract as deeded and described in Official Record 269, Page 633 of the Logan County Records of Deeds and being more particularly described as follows:

Commencing on a stone found on the northeast corner of Section 23.

THENCE, with the east line of Section 23, S 00°-00'-00"E, a distance of 371.33 feet to a 5/8 inch iron rod found on the south right-of-way of the CSX Railroad (formerly the C. C. C. & St. L. Ry. Co.), passing a railroad spike found on the center-line of County Highway 63 (60 feet wide) at 16.20 feet, a 5/8 inch iron rod set at 46.20 feet and a 5/8 inch iron rod found on the north right-of-way of the CSX Railroad at 219.39 feet.

THENCE, with the south right-of-way of the CSX Railroad, the following two courses:

S 82°-41'-40"W, a distance of 770.91 feet to a 5 inch concrete post found.

S 80°-50'-10"W, a distance of 551.12 feet to a 5/8 inch iron rod set at the TRUE POINT OF BEGINNING.

THENCE, S 01°-07'-19"E, a distance of 314.60 feet to a 5/8 inch iron rod set.

THENCE, S 89°-58'-58"W, a distance of 1187.67 feet to a 5/8 inch iron rod set, passing a 5/8 inch iron rod set on the center-line of a 30 feet ingress/egress easement at 15.00 feet.

THENCE, S 00°-57'-59"E, a distance of 509.79 feet to a 5/8 inch iron rod set.

THENCE, S 29°-27'-33"E, a distance of 727.99 feet to a 5/8 inch iron rod set.

THENCE, S 20°-10'-59"E, a distance of 674.56 feet to a 5/8 inch iron rod set.

THENCE, S 89°-39'-01"W, a distance of 770.67 feet to a 5/8 inch iron rod set.

THENCE, with the east line of the Lyn A. Davidson 30.844 acre tract (O.R. 930, Pg. 702, Tract I), N 00°-55'-01"E, a distance of 589.58 feet to a 5/8 inch iron rod found.

THENCE, with the east lines of the Douglas S. Upton original 52.59 acre tract (O.R. 329, Pg. 88), the following four courses:

N 04°-46'-01"E, a distance of 248.63 feet to a 12 inch tree found.

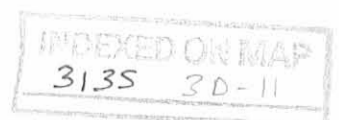
N 03°-22'-01"E, a distance of 223.77 feet to a 5/8 inch iron rod set, passing a 5/8 inch iron rod set at 5.00 feet.

N 03°-08'-59"W, a distance of 298.36 feet to a 5/8 inch iron rod set.

N 00°-33'-59"W, a distance of 388.44 feet to a 5 inch concrete post found.

THENCE, with the right-of-way of the CSX Railroad (formerly the C. C. C. & St. L. Ry. Co.), the following six courses:

N 00°-58'-56"E, a distance of 134.86 feet to a 5 inch concrete post found.



Lee Surveying and Mapping Co., Inc.

Land Surveys • Topography • Subdivisions • Construction Layout

117 N. Madriver St.
Bellefontaine OH 43311



Phone: (937) 593-7335
Fax: (937) 593-7444
surveys@lsminc.us

N 80°-48'-10"E, a distance of
iron rod set.

579.23 feet to a 5/8 inch

S 86°-11'-25"E, a distance of 222.71 feet to a 5/8 inch iron rod set.

N 80°-50'-09"E, a distance of 199.32 feet to a 5/8 inch iron rod set.

N 66°-45'-06"E, a distance of 205.47 feet to a 5/8 inch iron rod set.

N 80°-50'-10"E, a distance of 149.83 feet to the point of beginning, passing a 5/8 inch iron rod set on the center-line of a 30 feet ingress/egress easement at 134.68 feet.

Containing 21.867 acres. There are 19.946 acres within the Village of Quincy and 1.921 acres within Miami Township.

Property is subject to any and all previous easements and rights-of-way of record.

The basis for bearings is the north line of Section 23, being N 89°-43'-03"E, and all other bearings are from angles and distances measured in a field survey by Lee Surveying and Mapping Co., Inc. on March 11, 2011.

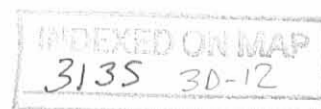
Description prepared by:



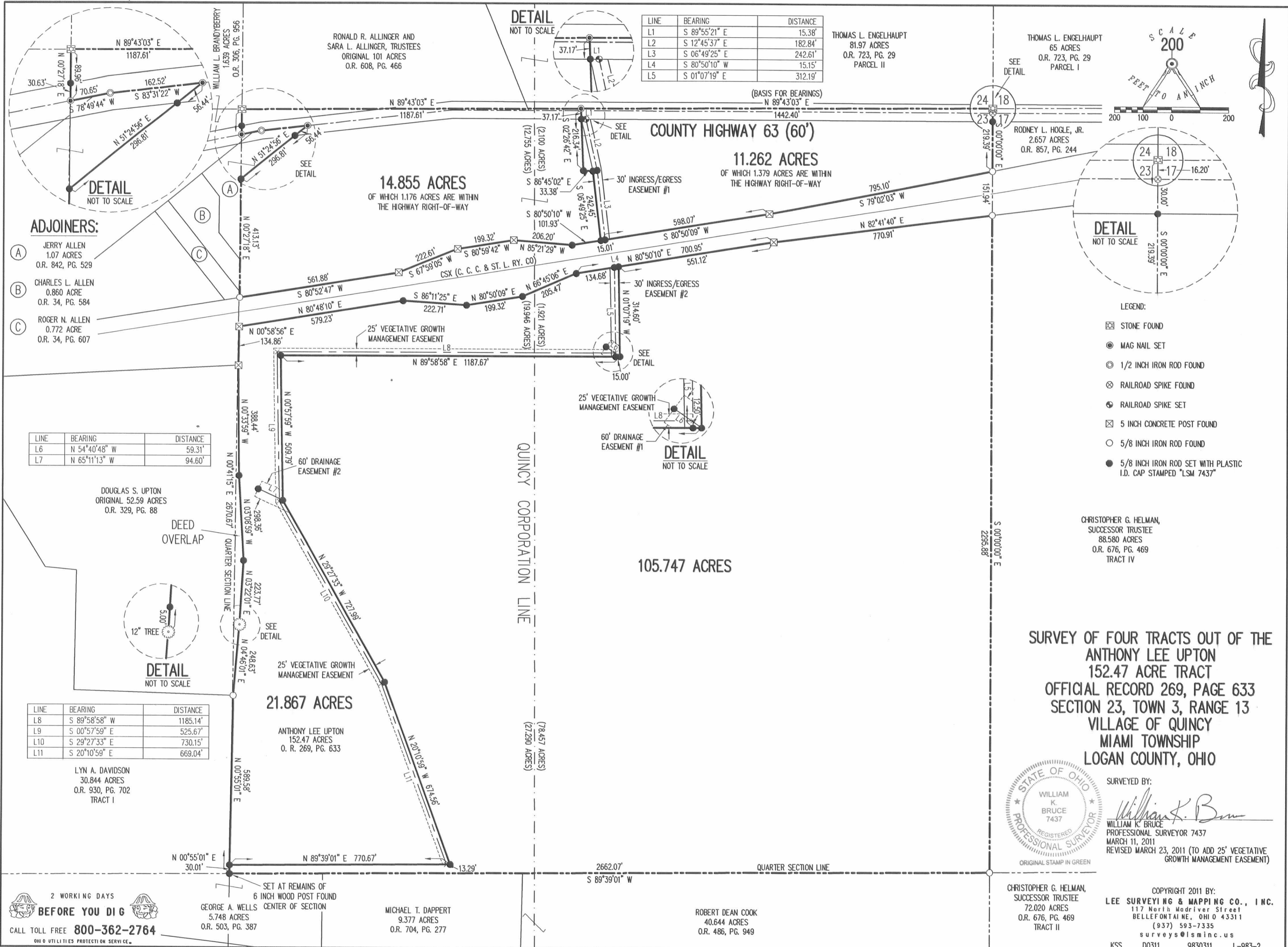
A handwritten signature in cursive script that reads 'William K. Bruce'.

William K. Bruce
Professional Surveyor 7437
March 11, 2011

9830111



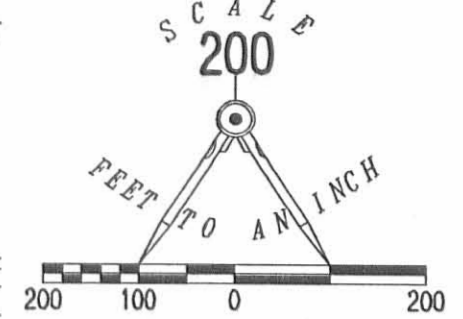
REV'D 3-24-11 SMY/OK



LINE	BEARING	DISTANCE
L1	S 89°55'21" E	15.38'
L2	S 12°45'37" E	182.84'
L3	S 06°49'25" E	242.61'
L4	S 80°50'10" W	15.15'
L5	S 01°07'19" E	312.19'

THOMAS L. ENGELHAUPT
81.97 ACRES
O.R. 723, PG. 29
PARCEL II

THOMAS L. ENGELHAUPT
65 ACRES
O.R. 723, PG. 29
PARCEL I



ADJOINERS:

- (A) JERRY ALLEN
1.07 ACRES
O.R. 842, PG. 529
- (B) CHARLES L. ALLEN
0.860 ACRE
O.R. 34, PG. 584
- (C) ROGER N. ALLEN
0.772 ACRE
O.R. 34, PG. 607

LINE	BEARING	DISTANCE
L6	N 54°40'48" W	59.31'
L7	N 65°11'13" W	94.60'

DOUGLAS S. UPTON
ORIGINAL 52.59 ACRES
O.R. 329, PG. 88

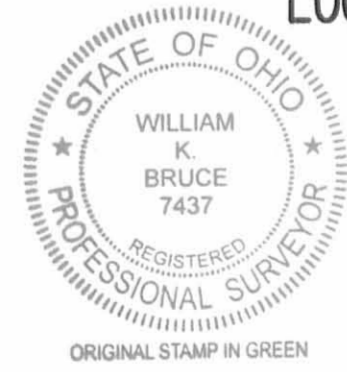
LINE	BEARING	DISTANCE
L8	S 89°58'58" W	1185.14'
L9	S 00°57'59" E	525.67'
L10	S 29°27'33" E	730.15'
L11	S 20°10'59" E	669.04'

LYN A. DAVIDSON
30.844 ACRES
O.R. 930, PG. 702
TRACT I

- LEGEND:**
- ☒ STONE FOUND
 - MAG NAIL SET
 - ⊙ 1/2 INCH IRON ROD FOUND
 - ⊗ RAILROAD SPIKE FOUND
 - ⊕ RAILROAD SPIKE SET
 - ⊠ 5 INCH CONCRETE POST FOUND
 - 5/8 INCH IRON ROD FOUND
 - 5/8 INCH IRON ROD SET WITH PLASTIC I.D. CAP STAMPED "LSM 7437"

CHRISTOPHER G. HELMAN,
SUCCESSOR TRUSTEE
88.580 ACRES
O.R. 676, PG. 469
TRACT IV

SURVEY OF FOUR TRACTS OUT OF THE ANTHONY LEE UPTON 152.47 ACRE TRACT OFFICIAL RECORD 269, PAGE 633 SECTION 23, TOWN 3, RANGE 13 VILLAGE OF QUINCY MIAMI TOWNSHIP LOGAN COUNTY, OHIO



SURVEYED BY:
William K. Bruce
WILLIAM K. BRUCE
PROFESSIONAL SURVEYOR 7437
MARCH 11, 2011
REVISED MARCH 23, 2011 (TO ADD 25' VEGETATIVE GROWTH MANAGEMENT EASEMENT)

CHRISTOPHER G. HELMAN,
SUCCESSOR TRUSTEE
72.020 ACRES
O.R. 676, PG. 469
TRACT II

COPYRIGHT 2011 BY:
LEE SURVEYING & MAPPING CO., INC.
117 North Madriver Street
BELLEFONTAINE, OHIO 43311
(937) 593-7335
surveys@lsminc.us
KSS D0311 9830311 L-983-2

2 WORKING DAYS
BEFORE YOU DIG
CALL TOLL FREE 800-362-2764
OHIO UTILITIES PROTECTION SERVICE

GEORGE A. WELLS
5.748 ACRES
O.R. 503, PG. 387

MICHAEL T. DAPPERT
9.377 ACRES
O.R. 704, PG. 277

ROBERT DEAN COOK
40.644 ACRES
O.R. 486, PG. 949

INDEXED ON MAP
3135 3P