

Lands along Champaign County Line  
Miami Township  
- Quincy Pct. -

R. T.	Sec.	Sub	1910 Dup.		McElree's Plats	
			Name	Acres	Name	Acres (Computed)
34	7		Rose Lewis E.	89.52	Stevenson Thos. J.	94.23 v
	8		Rose Ida Mary	89.59	Stevenson Chas. D.	93.15 v
	9		Stephenson Wm R.	22.04	Stevenson W. R.	22.18 v
	11		Stephenson Hattie L.	134.92	Stevenson Hattie L.	142.07 v
	10		Nissley Daniel G.	22.04	Nissley D. G.	22.18 v
13	3	28				
	6		Curtis Wm B.	100.00	Curtis Wm B.	100.84 v
	7		Persinger Wm H.	61.45	Idle Thomas	63.58 v
	8		Hoover Anna E.	160.00	Hoover Anna E.	170.20
13	3	22				
	6		Cost George A.	88.77	Cost George A.	88.86 v
	4		Cost John M.	123.02	Cost John M.	78.58 v
	7		Faultner Harry M.	116.47	Archer Jeremiah	121.29 v
	8		Clay Eliza J.	40.00	Clay Eliza J.	43.09 v

Note - Sub. 4, in plat-book, includes some land in the NW Qr of Sec. while McElree's plat shows the actual acreage in the SW Qr only.

Lands along Champaign County Line  
 - Miami Township -  
 - Quincy Pct. -

1910 Duplicate

McElree's Plats

R.	T.	Sec.	Sub	Name	Acres	Name	Acres
13	3	16	5	Melhorn Joseph W.	82.90	Melhorn J. W.	✓ 85.56
			6	Stoker James	100.00	Stoker James	✓ 103.86
			7	Pool Ben W.	65.80	Pool Benj. W.	✓ 64.89
			8	Plank J. A.	82.94	Strayer Leta E.	✓ 84.68

- DeGraff Pct. -

13	3	10	8	Hinkle W.H.	158.57	Hinkle W. H.	✓ 165.15
			10			Pool Geo T.	✓ 162.73

13	3	4	8	Pool Geo T.	30.00	Pool Geo T.	✓ 30.47
			9	Archer Wm F.	16.25	Brenner John H.	✓ 16.86
			10	Koogler Catharine M.	112.50	Koogler J.H.	✓ 113.78

The S.E. of Sec. 4 is  
 not finished on McElree's plat

# Champaign-Logan County Line

## Monuments

- # 35 Set by producing Co. line westward 20 feet.  
= Inscription =  
✓ "County corner, 20 feet east"  
"Shelby"  
"Logan"  
"Champaign"
- # 34 Set in Qr Sec line, 20' S. of Co. Line.  
= Inscription =  
✓ "County Line, 20 feet north"  
"Section corner, 20 feet north"  
"Logan"  
"Champaign"
- # 33 Set 20' east of Sec. corner @ 20' N of Co. Line  
= Inscription =  
✓ "County Line 20 feet south"  
"Section Corner 20 feet west 20 feet south"  
"Logan"  
"Champaign"

INDEXED ON MAP  
3415 1D-3

Sheet # 1.

Compared with 1906 Dup.



Champaign-Logan County Line

#32 Set on Qr Sec Line, 20' S. of Co. Line

= Description =

- ✓ "County Line, 20 feet north"  
✓ "Quarter Section Corner, 20 feet north"  
"Logan"  
"Champaign"

#31 Set 20' E. of Sec. cor @ 20' N. of Co. Line

= Description =

- ✓ "County Line, 20 feet south"  
"Section Corner, 20 feet west, 20 feet south"  
"Logan"  
"Champaign"

INDEXED ON MAP  
3415 1D-4

Sheet # 2 =  
Compared with 1906 Dep.

Champaign - Logan County Line

= Monuments =

#28

Set on Co line at Qr Sec Cor,

= Inscription =

✓

"County Line"

"Quarter Section Corner"

"Logan"

"Champaign"

#27

Set on Co. Line, & Sec. Line.

= Inscription =

✓

"County Line"

"Section Corner"

Logan

Champaign

Sheet # 4 = compared with 1906 Sup

INDEXED ON MAP  
3415 10-5

Champaign & Logan County Line

= Monuments =

- \* 19. Set on County Line at Sec Cor  
= Inscription =  
✓ "County Line"  
"Section Corner"  
"Logan"  
"Champaign"  

---
- \* 18. Set on County Line at west side Cadotte pike.  
= Inscription =  
✓ "County Line" [note! - no inscription on west side]  
"Logan"  
"Champaign"  

---
- \* 17. Set on Qr Sec Line 20' N. of Co. Line  
= Inscription =  
✓ "County Line, 20 feet south"  
"Quarter Section Corner, 20 feet south"  
"Logan"  
"Champaign"  

---
- \* 16. Set 20' S, 20' W. (Corner comes in @ bridge at  
Hartzler Jt. Ditch.)  
= Inscription =  
✓ "County Line 20 feet north"  
"Section Corner, 20 feet east, 20 feet north"  
"Logan"  
"Champaign"  

---



See also Field Books 36 and 39 for angles  
at Railroad

Additional notes from McEwen's field notes  
with Ry. Pt.-of-way, 0.50 from cent track  
From A to B - 40.22  
" " " " - 39.78

✓  
"County Line" = Description =  
"Section corner, 20 feet west"  
"Logan"  
"Champaign"

# 29 Sit on County line, 20' E. of Sec. cor

✓  
"County line, 20 feet north"  
"Quarter Section Corner, 20 feet north"  
"Logan"  
"Champaign"

# 30 Sit on Pt. Sec line, 20' S. of Co. line. (In R.R. Pt.-of-way)

Monuments

Sheet # 3 = Corrected to 1906 map

~~Champaign Logan County Line~~  
— Monuments —

#15 Set on Qr Sec Line 20' N. of Co. Line. (This is the mon. just east of "Sink hole" and was set in oak frame).

— Inscription —

✓ "County Line, 20 feet south"  
"Quarter Section Corner, 20 feet south"  
"Logan"  
"Champaign"

---

#14 Set on Sec. Line, 20' S. of Co. Line

— Inscription —

✓ "County Line, 20 feet north"  
"Section Corner, 20 feet north"  
"Logan"  
"Champaign"

---

#13 Set 20' S. of Co Line <sup>and</sup> 24" E. of Qr line. (on acct big anchor post.)

— Inscription —

✓ "County Line, 20 feet north"  
"Quarter Section corner, 20 feet north, 2 feet west"  
"Logan"  
"Champaign"

---

#12 Set 20' E of Sec Cor & 20' S. of Co Line

Inscription

✓ "County Line, 20 feet north"  
"Section Corner, 20 feet west, 20 feet north"  
"Logan"  
"Champaign"



Champaign - Logan County Line

— Monuments —

# 11 Set in Qr. Sec Line, on Liberty - Union Tp line, 20'  
N. of County Line.

— Inscription —

✓ County Line, 20 feet south, Liberty Township  
Quarter Section corner, 20 feet south, Union Township  
"Logan"  
"Champaign"

# 10 Set on Co. Line at Sec. Corner

= Inscription =

✓ "County Line"  
"Section Corner"  
"Logan"  
"Champaign"

# 9

= Inscription =

✓ "County Line"  
"Quarter Section Corner"  
"Logan"  
"Champaign"

# 8

on County Line

— Inscription —

✓ "County Line, Salem Township"  
"Section Corner, Harrison Township"  
"Logan"  
"Champaign"

# Champaign-Logan County Line

## Monuments

- \* 26 Set on Co. line 35' west of Qr Sec Cor.  
(corner comes in center of bridge floor)

### Inscription

✓ "County Line"

"Quarter Section Corner, 35 feet east"

"Logan"

"Champaign"

- \* 25 Set on Co Line and Section line

### = Inscription =

✓ "County Line"

"Section Corner"

"Logan"

"Champaign"

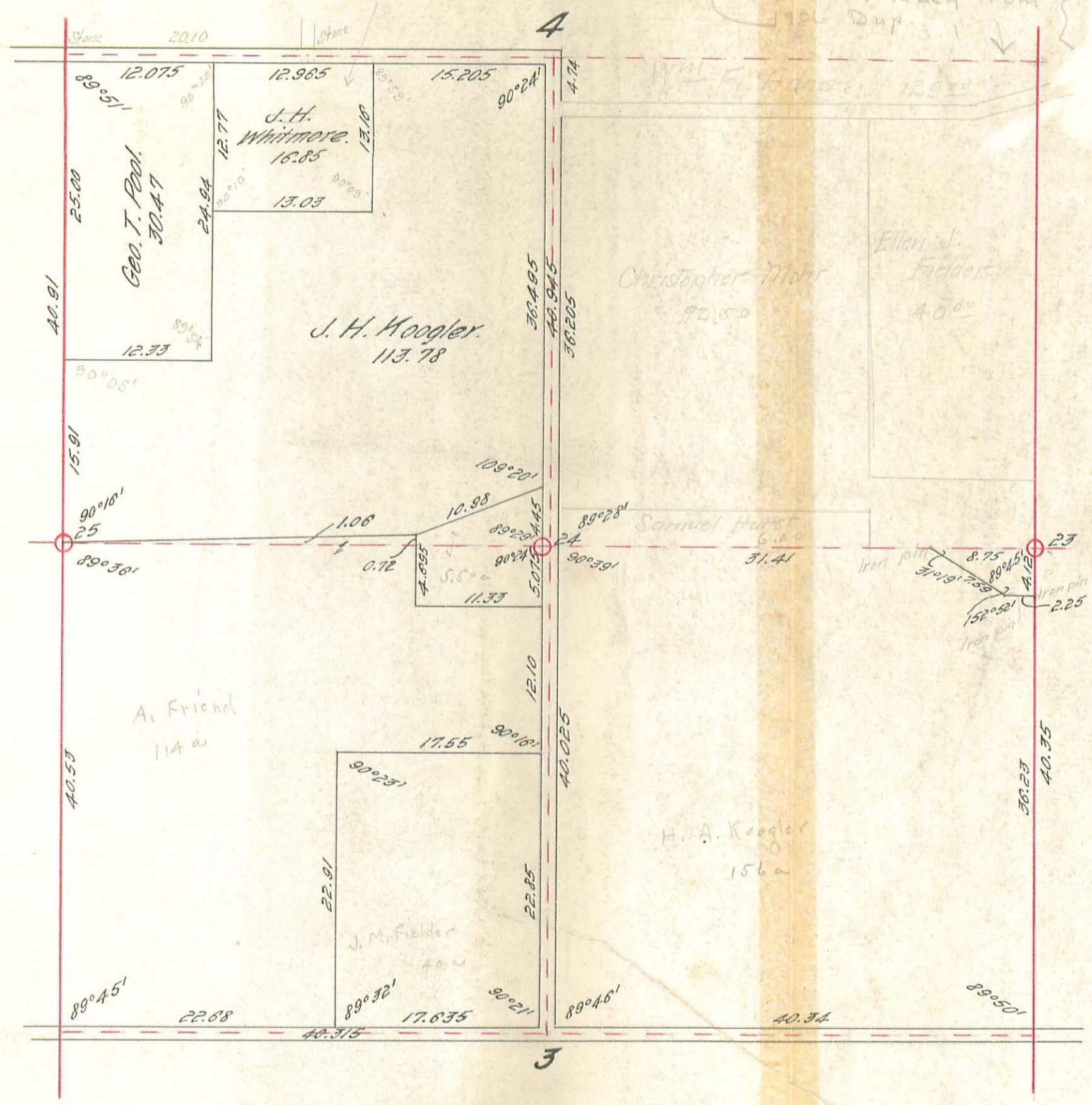
Sheet # 3 Corrected to 1906 Dep



1905 Dup.  
John H. Brennan

T. J. R. 13.

This & the Qr. Section  
is copied from platbook  
with names taken from  
1906 Dup.

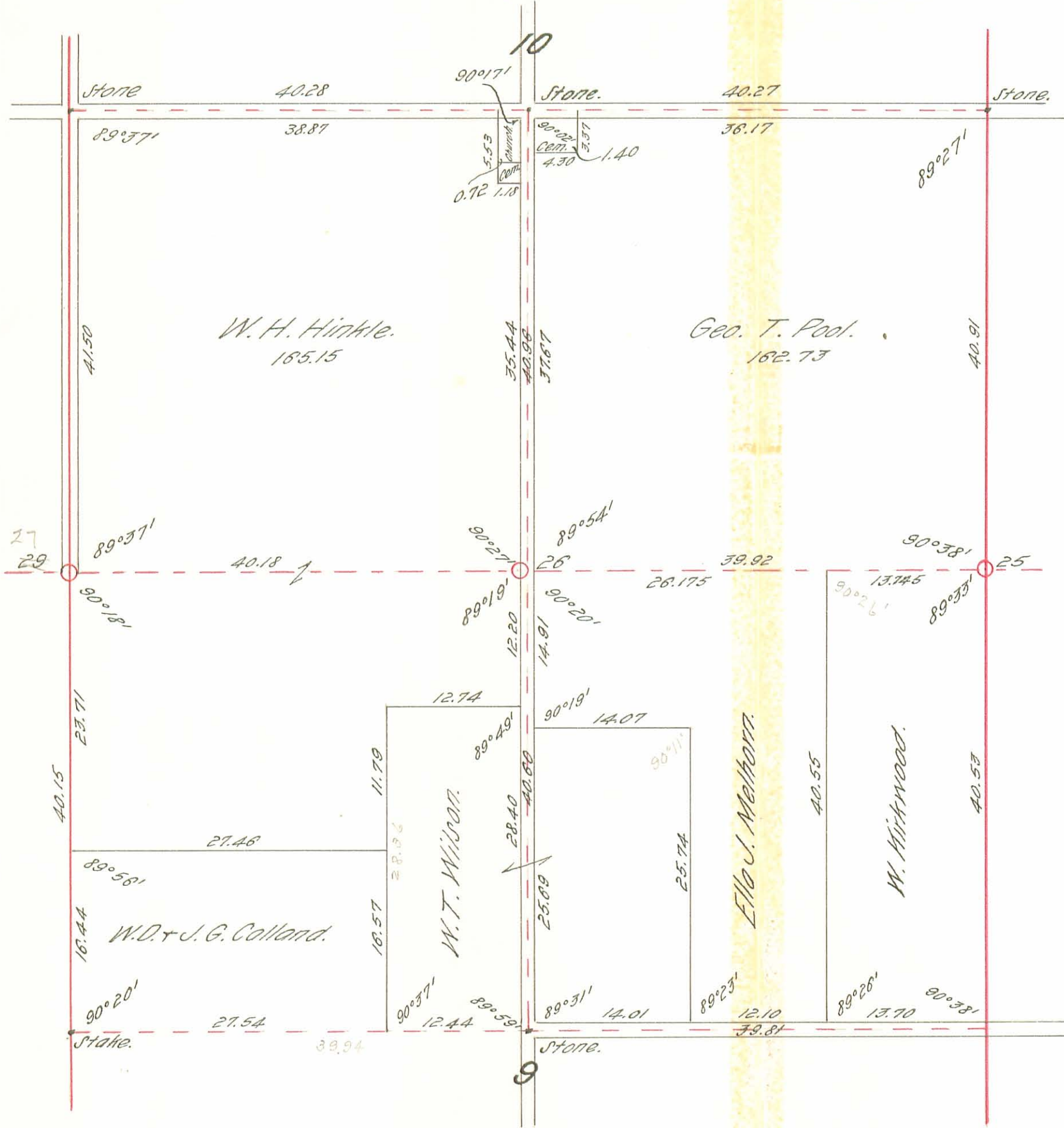


INDEXED ON MAP  
3415 IP-1

PLAN 1087

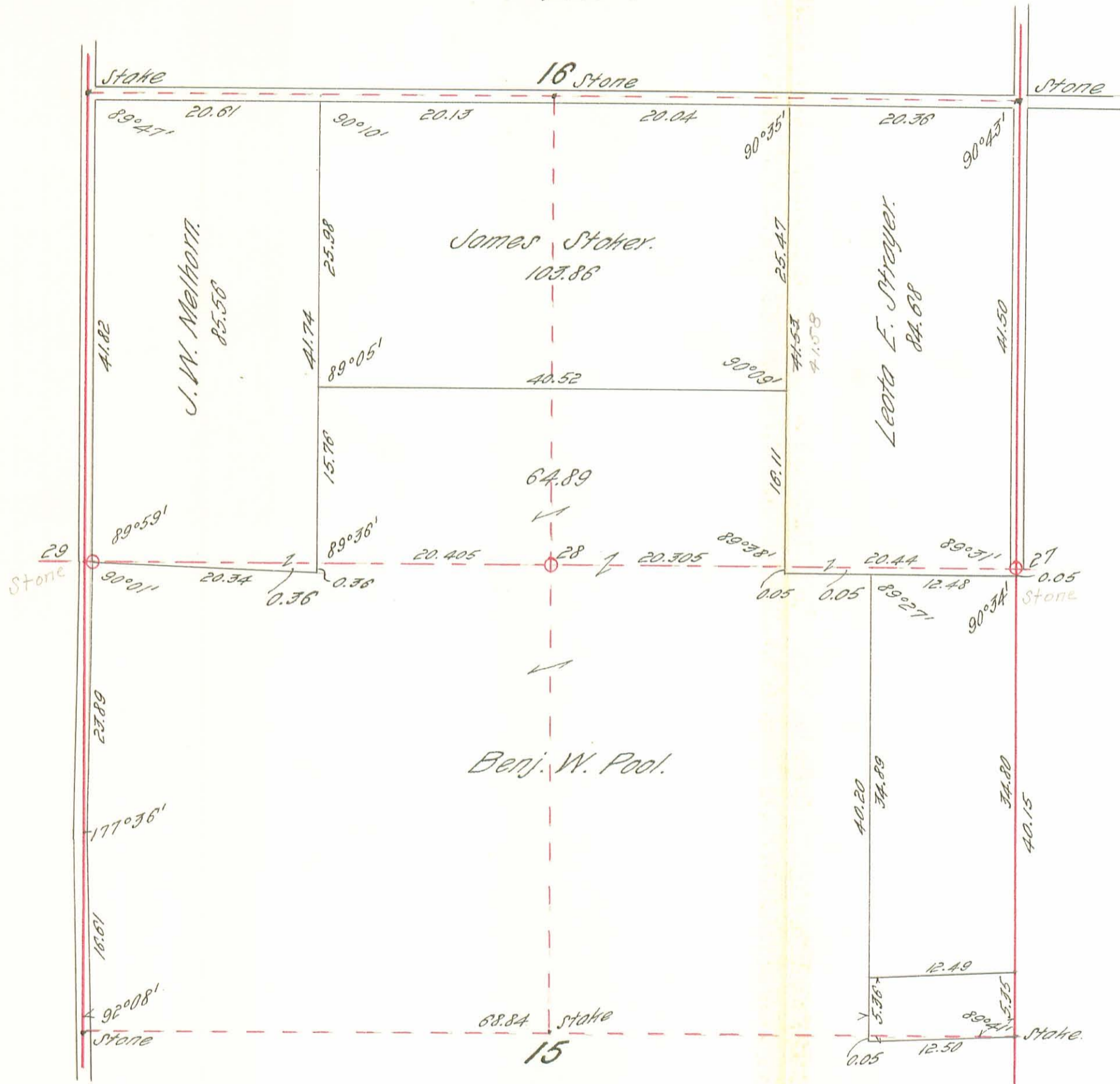


T.J.P. 13



INDEXED ON MAP  
3415 IP2

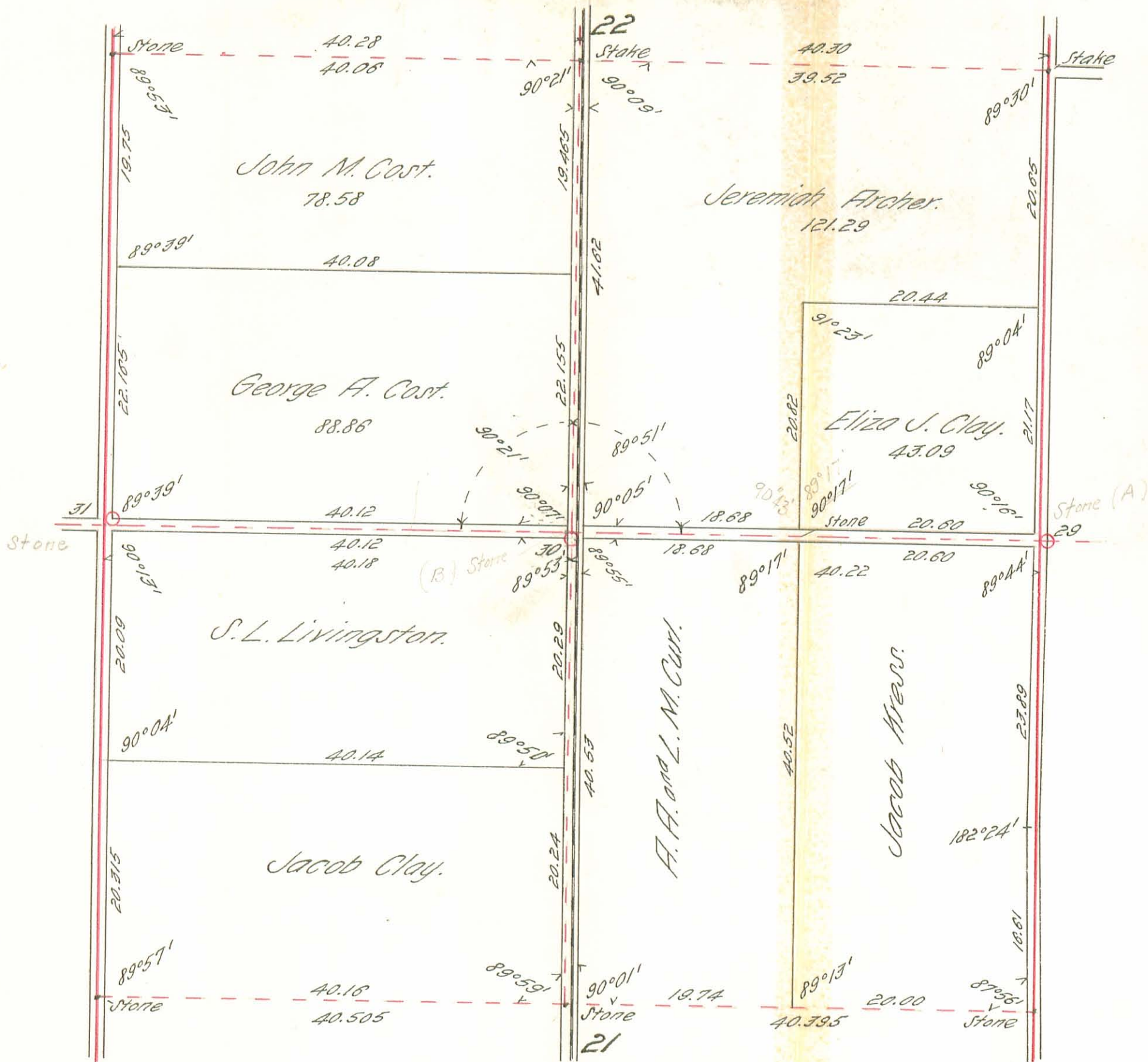
T. J. A. 13



INDEXED ON MAP  
3415 IP-3



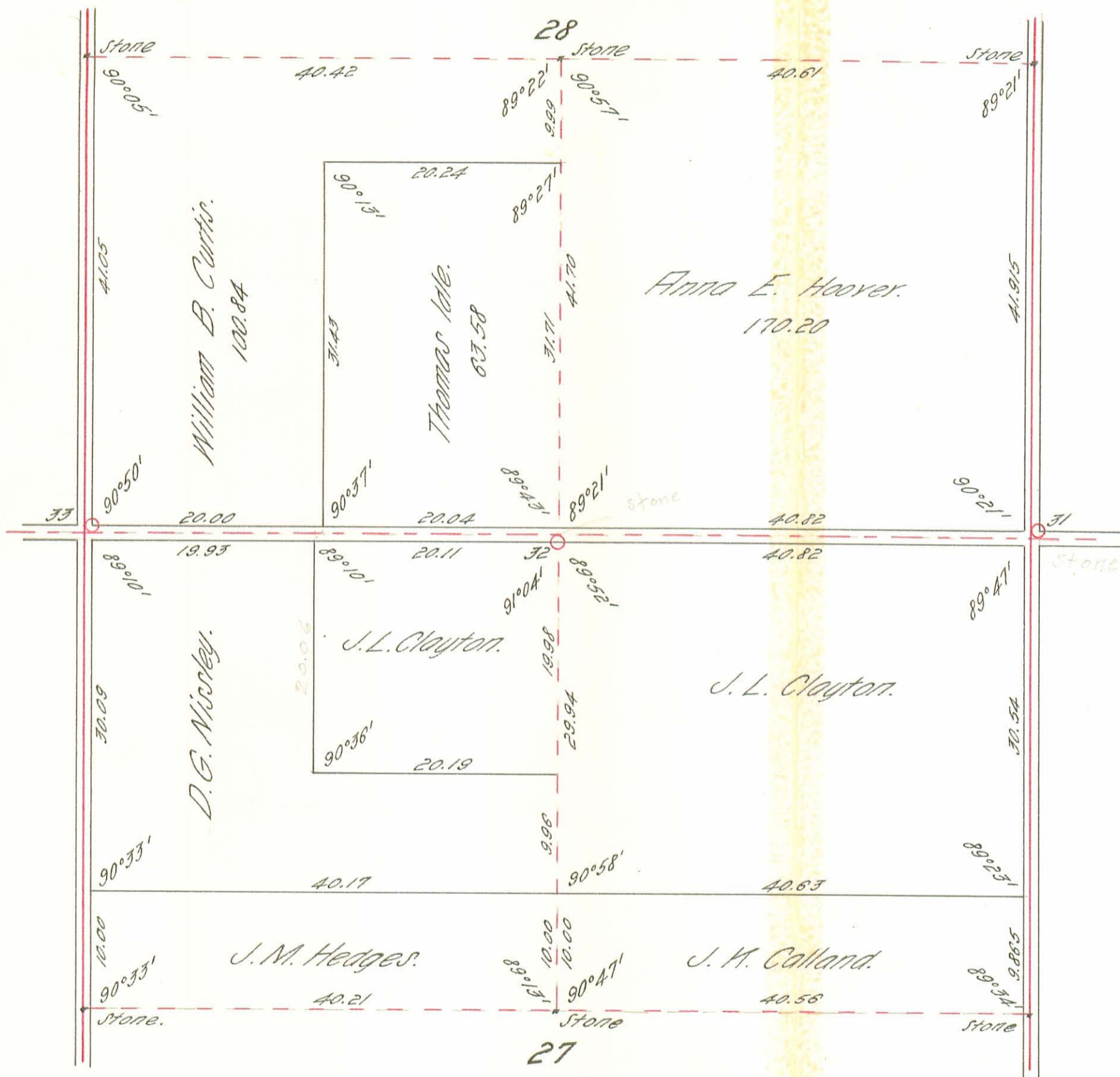
T. J. A. 13



INDEXED ON MAP  
3415 1P-4



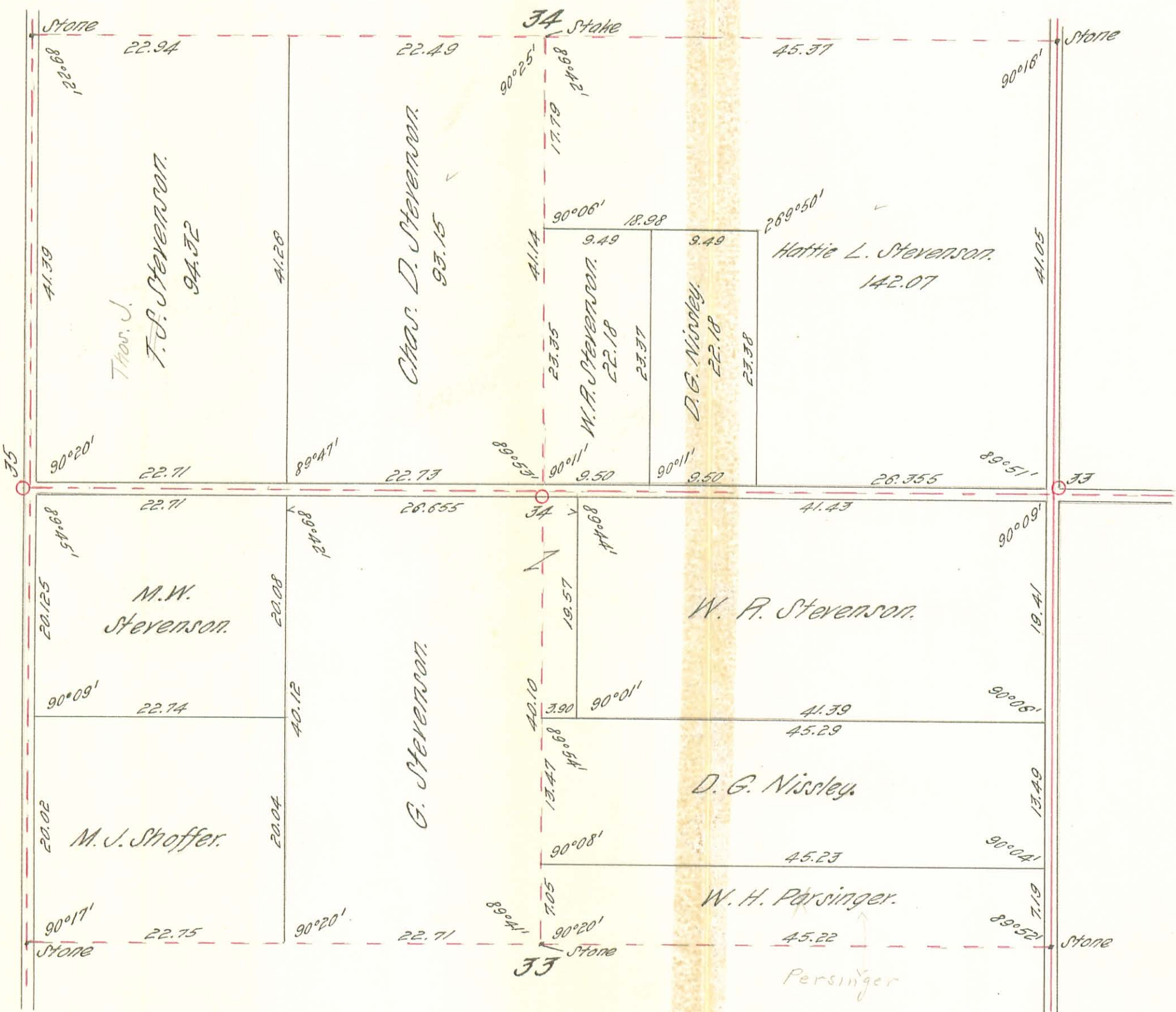
T.J.P. 13.



INDEXED ON MAP  
3415 1P-5

T. J. P. 13

Shelby County



INDEXED ON MAP  
3415 1P-6



Reset (lowering) of Co. Line Mon.  
 No. 28, Bk. D pg. 51 - S. 16-T. 3-R. 13  
 FB 710 Miami Twp.  
 Logan Co., Ohio

Monument No. 28 is now about  
 2½ ft. below the ground surface.  
 Several 5/8 in. dia. re-bars were  
 placed at corners for magnetic  
 attraction. Monument dimensions  
 are 1' x 1' x 7½".

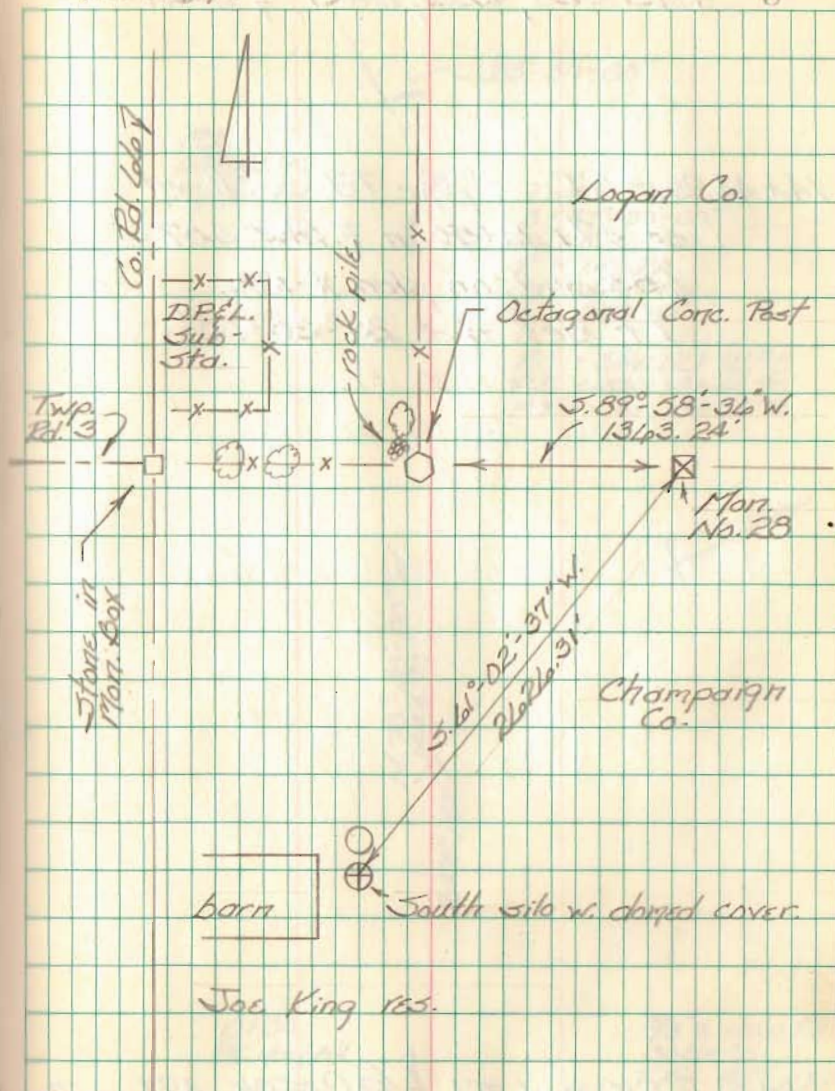
Note:

Mr. King was tired of farming  
 around this Co. Line Monument  
 and inquired about removing it.  
 We lowered it so that it is  
 now approx. 2½ ft. below ground  
 surface.

C.D.D.

C. Nichols  
 C. Dill  
 B. Simmons

14 Oct. 97  
 Nice Day



Stone in mon. box to Co. Line Mon. 28  
 = 2690.01' East.