

MEANS TO GOINGS SURVEY

The following described real estate situated in the Township of Miami, County of Logan, State of Ohio and being a part of Fractional Section No. 12, Town 3, Range 13, Between the Miami Rivers Survey and being out of a 39.460 Acre tract in the name of Clarence L. Means et ux as recorded in Deed Volume No. 322 Page 870 (12-20-1967) and now being more particularly described as follows:

Beginning for reference at a 5/8 inch Rebar found at the intersection of the centerlines of C. H. No. 63 and C. H. No. 64 as shown in Logan County Engineers Field Book No. 587 Page 43 and being designated as Station No. 27 + 19.90;

Thence with the centerline of C. H. No. 63, N. 82°16'00" W. 644.42 feet to a R. R. Spike set for the true place of beginning, (Note: The centerline of C. H. No. 63 is the Basis of Bearing for this survey - N. 82°16'00" W.);

Thence continuing with the centerline of C. H. No. 63, (which is also the south line of Means' 39.460 Acre tract, N. 82°16'00" W. 259.96 feet to a R. R. Spike set, passing through a R. R. Spike set at 70.00 feet;

Thence N. 2°14'00" E. 184.91 feet to a 5/8" x 30" Rebar set, passing through a 5/8" x 30" Rebar set at 30.14 feet;

Thence S. 73°03'52" E. 213.03 feet to a 5/8" x 30" Rebar set;

Thence S. 82°16'00" E. 67.39 feet to a 5/8" x 30" Rebar set;

Thence S. 7°44'00" W. 150.00 feet to the true place of beginning, passing through a 5/8" x 30" Rebar set at 120.00 feet, containing 43,601.825 square feet or 1.001 Acres, more or less.

Of the above described tract, there is 7,842.150 square feet or 0.180 Acres in the right of way of C. H. No. 63.

I hereby certify that this description is the result of a field survey made by me on May 26, 1998.



Daniel E. Gilbert

DANIEL E. GILBERT, P.S.
REG. SUR. NO. 5402
400 N. PARK ST.
BELLEFONTAINE, OHIO 43311
TELEPHONE: 1 (800) 593-1428
937

4148 ID-1

**Right of way Easement
Description**

The following described Right of Way Easement situated in the Township of Miami, County of Logan, State of Ohio and being a part of Fractional Section No. 12, Town 3, Range 13, Between the Miami Rivers Survey and being a part of 39.460 Acre tract in the name of Clarence L. Means et ux as recorded in Deed Volume No. 322 Page 870 (12-20-1967) and now being more fully described as follows:

Beginning for reference at a 5/8 inch Rebar found at the intersection of the centerlines of C. H. No. 63 and C. H. No. 64 as shown in Logan County Engineers Field Book No. 587 Page 43 and being designated as Station No. 27 + 19.90;

Thence with the centerline of C. H. No. 63, N. 82°16'00" W. 694.42 feet to a point for the true place of beginning, (Note: The centerline of C. H. no. 63 is the Basis of Beginning for this survey - N. 82°16'00" W.);

Thence continuing with the centerline of C. H. No. 63, N. 82°16'00" W. 20.00 feet to a R. R. Spike set;

Thence N. 8°44'00" E. 139.92 feet to a point, passing through a 5/8" x 30" Rebar set at 30.00 feet;

Thence N. 73°03'52" W. 212.22 feet to a point;

Thence N. 2°14'00" E. 10.25 feet to a 5/8" x 30" Rebar set;

Thence S. 73°03'52" E. 213.03 feet to a 5/8" x 30" Rebar set;

Thence S. 82°16'00" E. 30.00 feet to a point;

Thence S. 19°36'20" W. 51.08 feet to a point;

Thence S. 8°44'00" W. 100.00 feet to the true place of beginning.

I hereby certify that this description is based on a field survey made by me on May 26, 1998.

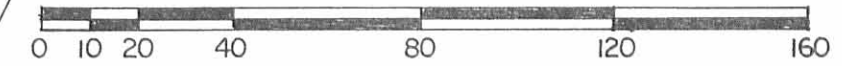
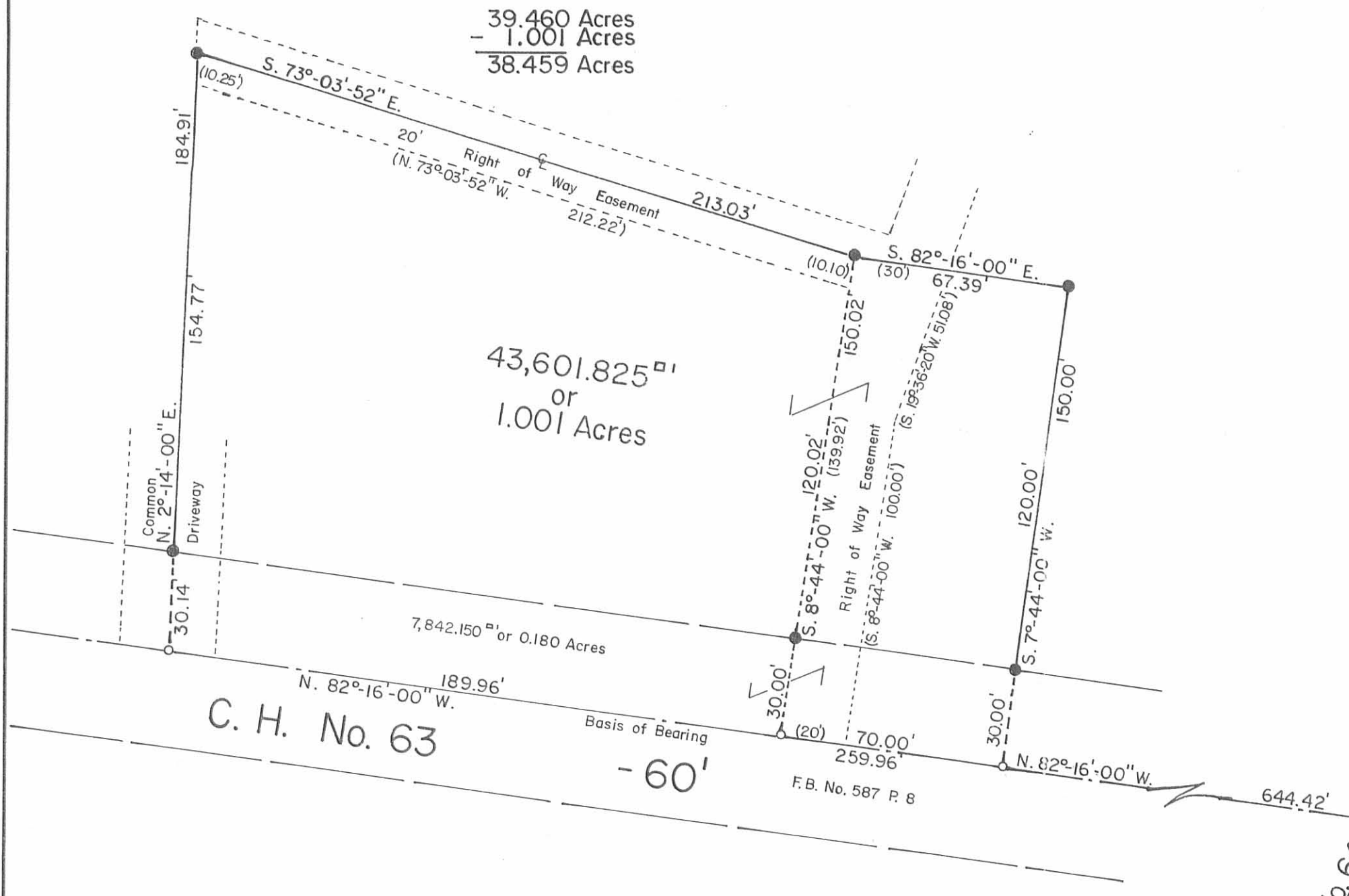


Daniel E. Gilbert
DANIEL E. GILBERT, P.S.
REG. SUR. NO. 5402
400 N. PARK ST.
BELLEFONTAINE, OHIO 43311
TELEPHONE: 1 (614) 593-1428
937

INDEXED ON MAP
4140 1D2

Clarence L. Means et ux
 D. Vol. No. 322 P.870 (12-20-1967)
 25-117-00-00-028.000

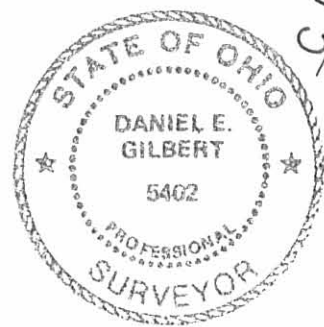
39.460 Acres
 - 1.001 Acres
 38.459 Acres



Scale: 1" = 40'

- SYMBOLS:
- ⊗ - 5/8" Rebar Fd.
 - - R. R. Spikes Set.
 - - 5/8" x 30" Rebars Set.

5/8" Rebar Fd.
 F.B. No. 587 P. 43
 Sta. No. 27+19.90



MEANS To GOINGS SURVEY
 Section No. 12, Town 3, Range 13 BMRS.
 Miami Township, Logan County, Ohio.

SCALE: 1" = 40'	APPROVED BY:	DRAWN BY DEG
DATE: 5-26-1998		REVISED

Daniel E. Gilbert
 Daniel E. Gilbert, P.S.
 Reg. Sur. No. 5402

DRAWING NUMBER
 098-012

INDEXED ON MAP
 4148 IP

Revised 12-7-00 02/2/00

Lee Surveying and Mapping Co., Inc.

Land Surveys • Topography • Subdivisions • Construction Layout

117 N. Madriver St.
Bellefontaine OH 43311



Phone: (937) 593-7335
Fax: (937) 593-7444

MEADE TRACT B 6.777 ACRES

Lying in Section 12, Town 3, Range 13, Miami Township, Logan County, Ohio.

Being out of the Steven L. Meade and Lori M. Meade original 38.459 acre tract as deeded and described in Official Record 459, Page 821, Tract I of the Logan County Records of Deeds and being more particularly described as follows:

Beginning at a MAG nail set at the intersection of the west line of Section 12 and the center-line of County Highway 63.

THENCE, with the west line of Section 12 and the east line of the Arnold O. Thompson, Jr. 7.71 acre tract (O.R. 176, Pg. 788), N 00°-20'-12" E, a distance of 272.86 feet to a 5/8 inch iron rod set, passing a 5/8 inch iron rod set at 30.03 feet.

THENCE, with the south line of the C.C.C. & St. Louis Railroad 22.680 acre tract (Vol. 129, Pg. 390), N 80°-33'-39" E, a distance of 137.83 feet to a 5/8 inch iron rod set.

THENCE, continuing with the C.C.C. & St. Louis Railroad tract, a curve to the left with a central angle of 5°-27'-20", a radius of 7823.25 feet, an arc length of 744.91 feet, a tangent of 372.74 feet, a chord length of 744.63 feet and a chord bearing N 77°-49'-59" E, to a 5/8 inch iron rod set.

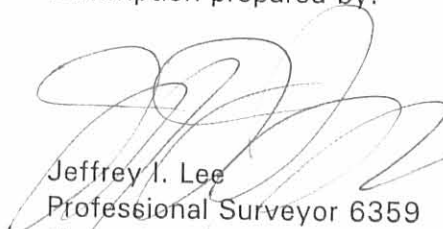
THENCE, S 2°-16'-49" E, a distance of 417.60 feet to a MAG nail set, passing a 5/8 inch iron rod set at 387.60 feet.

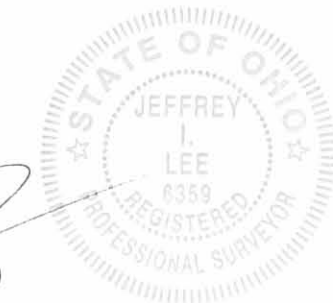
THENCE, with the center-line of County Highway 63 (60 feet wide), S 87°-43'-11" W, a distance of 882.79 feet to the place of beginning.

Containing 6.777 acres of which 0.608 acre is within the highway right-of-way.

The basis for bearings is the center-line of County Highway 63 west of County Highway 64 being N 82°-16'-00" W, and all other bearings are from angles and distances measured in a field survey by Lee Surveying and Mapping Co., Inc. on October 30, 2000.

Description prepared by:


Jeffrey I. Lee
Professional Surveyor 6359
November 6, 2000



ORIGINAL STAMP IN GREEN

L-3010

INDEXED ON MAP
4148 2D-1

REC 11-21-00 GMM OK ✓
Lee Surveying and Mapping Co., Inc.

Land Surveys • Topography • Subdivisions • Construction Layout

117 N. Madriver St.
Bellefontaine OH 43311



Phone: (937) 593-7335
Fax: (937) 593-7444

**MEADE
TRACT C
5.286 ACRES**

Lying in Section 12, Town 3, Range 13, Miami Township, Logan County, Ohio.

Being out of the Steven L. Meade and Lori M. Meade original 38.459 acre tract as deeded and described in Official Record 459, Page 821, Tract I of the Logan County Records of Deeds and being more particularly described as follows:

Beginning at a MAG nail set at the intersection of the west line of Section 12 and the center-line of County Highway 63.

THENCE, with the center-line of County Highway 63 (60 feet wide), N 87°-43'-11" E, a distance of 882.79 feet to a MAG nail set at the TRUE POINT OF BEGINNING.

THENCE, N 2°-16'-49" W, a distance of 296.74 feet to a 5/8 inch iron rod set, passing a 5/8 inch iron rod set at 30.00 feet.

THENCE, N 87°-43'-11" E, a distance of 555.87 feet to a point, passing a 5/8 inch iron rod set at 550.87 feet.

THENCE, S 82°-16'-00" E, a distance of 246.12 feet to a 5/8 inch iron rod set, passing a 5/8 inch iron rod set at 5.00 feet.

THENCE, S 7°-44'-00" W, a distance of 296.74 feet to a MAG nail set, passing a 5/8 inch iron rod set at 266.74 feet.

THENCE, with the center-line of County Highway 63 (60 feet wide), N 82°-16'-00" W, a distance of 220.13 feet to a railroad spike found.

THENCE, with the center-line of County Highway 63, S 87°-43'-11" W, a distance of 529.87 feet to the place of beginning.

Containing 5.286 acres of which 0.518 acre is within the highway right-of-way.

The basis for bearings is the center-line of County Highway 63 west of County Highway 64 being N 82°-16'-00" W, and all other bearings are from angles and distances measured in a field survey by Lee Surveying and Mapping Co., Inc. on October 30, 2000.

Description prepared by:

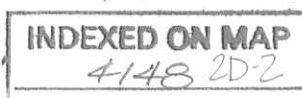
A handwritten signature in black ink, appearing to read 'Jeffrey I. Lee', is written over the typed name and title.

Jeffrey I. Lee
Professional Surveyor 6359
November 6, 2000



ORIGINAL STAMP IN GREEN

L-3010



RECID 11-21-00 SMY OLV

Lee Surveying and Mapping Co., Inc.

Land Surveys • Topography • Subdivisions • Construction Layout

117 N. Madriver St.
Bellefontaine OH 43311



Phone: (937) 593-7335
Fax: (937) 593-7444

MEADE TRACT D 21.830 ACRES

Lying in Section 12, Town 3, Range 13, Miami Township, Logan County, Ohio.

Being out of the Steven L. Meade and Lori M. Meade original 38.459 acre tract as deeded and described in Official Record 459, Page 821, Tract I of the Logan County Records of Deeds and being more particularly described as follows:

Beginning at a 5/8 inch iron rod found at the intersection of the center-lines of County Highway 63 and County Highway 64.

THENCE, with the center-line of County Highway 63 (60 feet wide), N 82°-16'-00" W, a distance of 389.79 feet to a railroad spike found at the TRUE POINT OF BEGINNING.

THENCE, continuing with the center-line of County Highway 63, N 82°-16'-00" W, a distance of 252.67 feet to a railroad spike found.

THENCE, with the lines of the Gary Goings 1.001 acre tract (O.R. 448, Pg. 149), the following three courses:

N 7°-43'-59" E, a distance of 149.86 feet to a 5/8 inch iron rod found, passing a 5/8 inch iron rod found at 30.00 feet.

N 82°-08'-11" W, a distance of 67.21 feet to a 5/8 inch iron rod found.

N 73°-03'-25" W, a distance of 212.73 feet to a 5/8 inch iron rod found.

THENCE, with the lines of the Boyd David Manning 1.055 acre tract (O.R. 468, Pg. 882, Tract I), the following five courses:

N 7°-44'-00" E, a distance of 64.47 feet to a 5/8 inch iron rod found.

N 82°-16'-00" W, a distance of 48.78 feet to a 5/8 inch iron rod found.

N 86°-52'-27" W, a distance of 36.46 feet to a 5/8 inch iron rod found.

N 82°-16'-00" W, a distance of 94.50 feet to a 5/8 inch iron rod found.

S 7°-44'-00" W, a distance of 245.60 feet to a MAG nail found, passing a 5/8 inch iron rod found at 215.60 feet.

THENCE, with the center-line of County Highway 63, N 82°-16'-00" W, a distance of 60.00 feet to a MAG nail set.

THENCE, N 7°-44'-00" E, a distance of 296.74 feet to a 5/8 inch iron rod set, passing a 5/8 inch iron rod set at 30.00 feet.

THENCE, N 82°-16'-00" W, a distance of 246.12 feet to a point, passing a 5/8 inch iron rod set at 241.12 feet.

THENCE, S 87°-43'-11" W, a distance of 555.87 feet to a 5/8 inch iron rod set, passing a 5/8 inch iron rod set at 5.00 feet.

THENCE, N 2°-16'-49" W, a distance of 120.86 feet to a 5/8 inch iron rod set.

INDEXED ON MAP
4148 2D-3

Lee Surveying and Mapping Co., Inc.

Land Surveys • Topography • Subdivisions • Construction Layout

117 N. Madriver St.
Bellefontaine OH 43311



Phone: (937) 593-7335
Fax: (937) 593-7444

THENCE, with the south line of C.C.C. & St. Louis Railroad 22.680 acre tract (Vol. 129, Pg. 390), a curve to the left with a central angle of $9^{\circ}-44'-39''$, a radius of 7823.25 feet, an arc length of 1330.50 feet, a tangent of 666.86 feet, a chord length of 1328.89 feet and a chord bearing $N 70^{\circ}-13'-59'' E$, to a 5 inch square concrete post found.

THENCE, continuing with the C.C.C. & St. Louis Railroad tract, $N 16^{\circ}-52'-33'' W$, a distance of 55.51 feet to a 5 inch square concrete post found.

THENCE, continuing with the C.C.C. & St. Louis Railroad tract, a curve to the left with a central angle of $2^{\circ}-35'-24''$, a radius of 7768.25 feet, an arc length of 351.14 feet, a tangent of 175.60 feet, a chord length of 351.11 feet and a chord bearing $N 64^{\circ}-00'-39'' E$, to a point, passing a 5/8 inch iron rod set at a chord length of 343.54 feet.

THENCE, with the west line of the J. Malcolm Meade 108.16 acre tract (Vol. 282, Pg. 29), $S 19^{\circ}-07'-49'' E$, a distance of 993.26 feet to a 1-1/2 inch iron pipe found.

THENCE, with the lines of the William L. Weiskittle 2.28 acre tract (O.R. 31, Pg. 327), the following three courses:

$N 81^{\circ}-39'-19'' W$, a distance of 200.00 feet to a 1 inch iron pipe found.

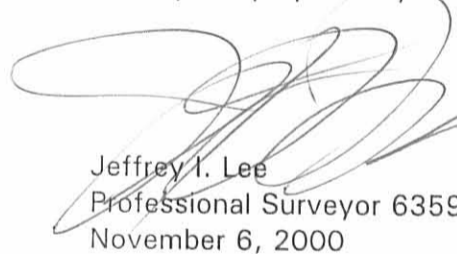
$S 43^{\circ}-33'-01'' W$, a distance of 138.80 feet to a point in the water.

$S 17^{\circ}-29'-25'' W$, a distance of 184.30 feet to the place of beginning.

Containing 21.830 acres of which 0.217 acre is within the highway right-of-way.

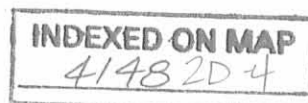
The basis for bearings is the center-line of County Highway 63 west of County Highway 64 being $N 82^{\circ}-16'-00'' W$, and all other bearings are from angles and distances measured in a field survey by Lee Surveying and Mapping Co., Inc. on October 30, 2000.

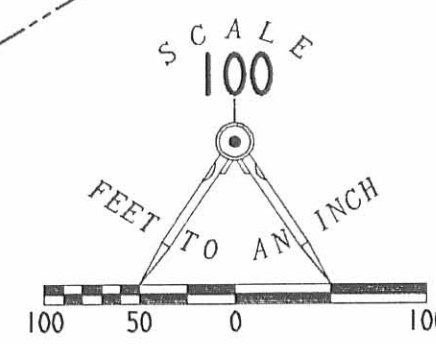
Description prepared by:


Jeffrey I. Lee
Professional Surveyor 6359
November 6, 2000

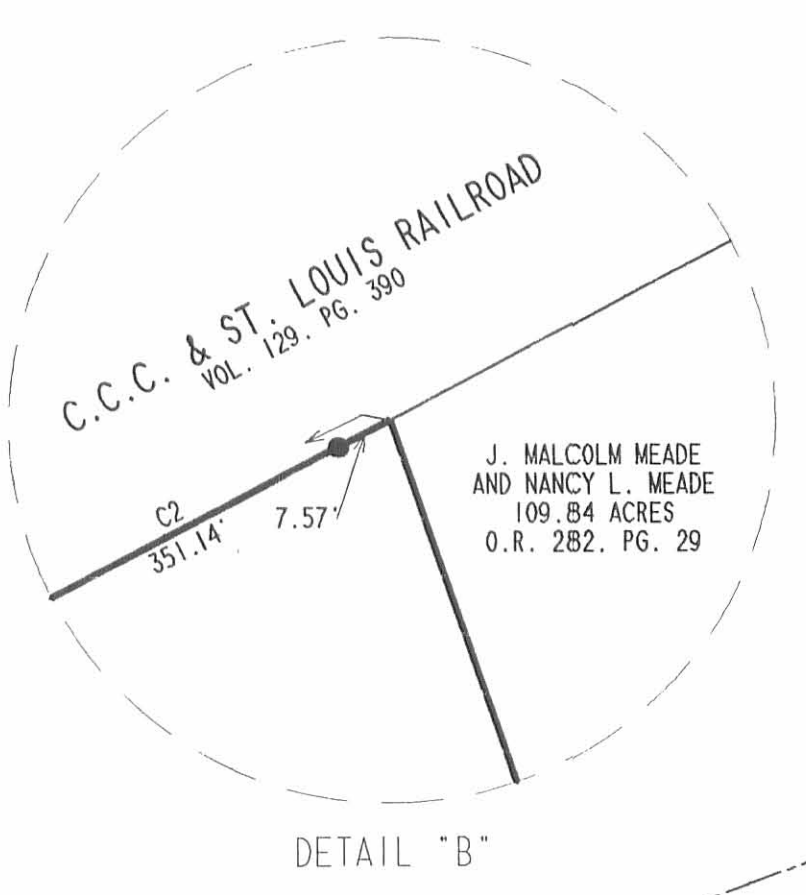


L-3010

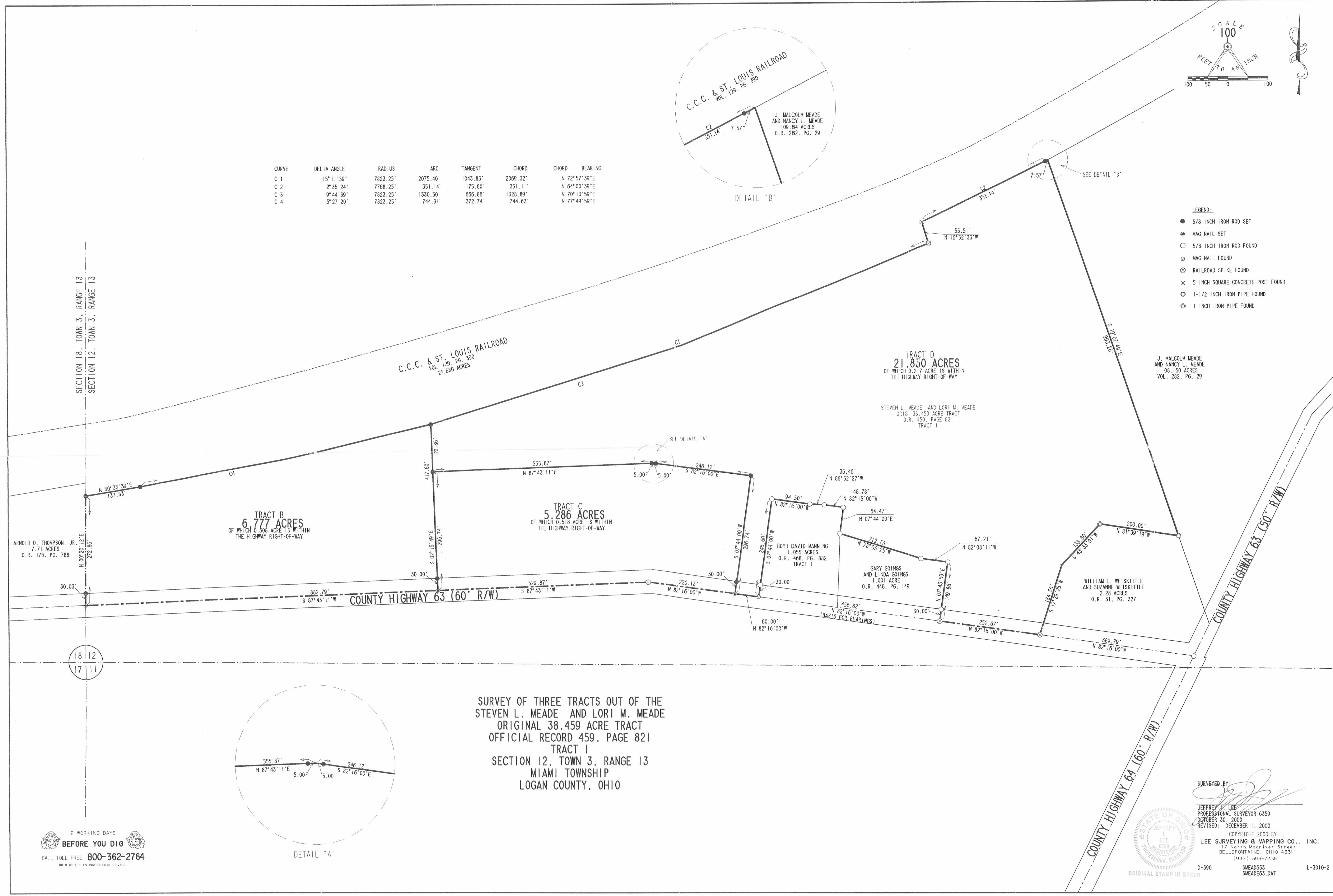




CURVE	DELTA ANGLE	RADIUS	ARC	TANGENT	CHORD	CHORD BEARING
C 1	15° 11' 59"	7823.25'	2075.40'	1043.83'	2069.32'	N 72° 57' 39" E
C 2	2° 35' 24"	7768.25'	351.14'	175.60'	351.11'	N 64° 00' 39" E
C 3	9° 44' 39"	7823.25'	1330.50'	666.86'	1328.89'	N 70° 13' 59" E
C 4	5° 27' 20"	7823.25'	744.91'	372.74'	744.63'	N 77° 49' 59" E

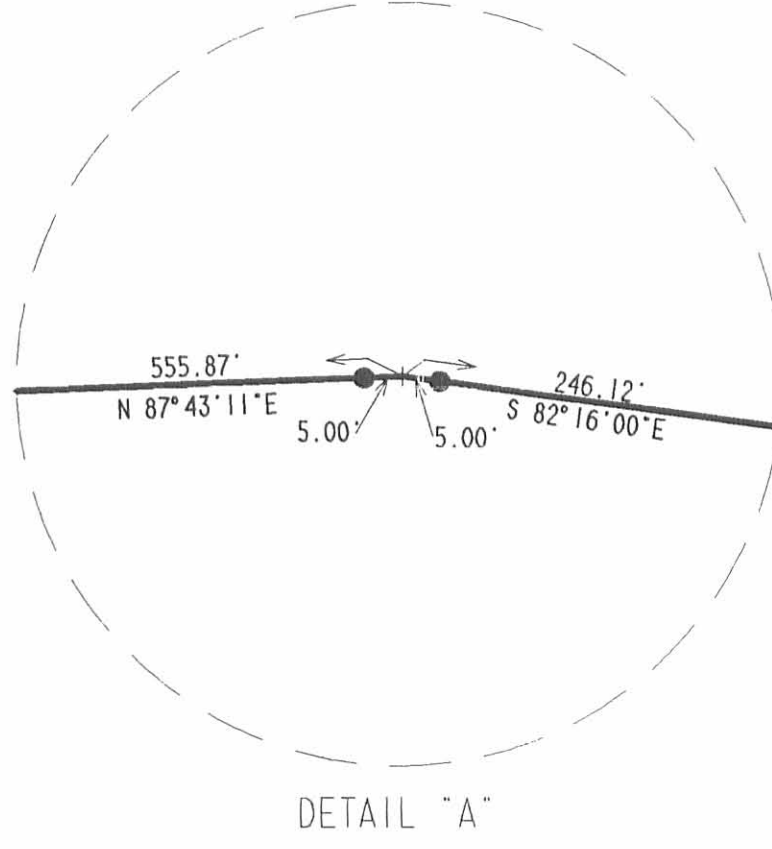


- LEGEND:
- 5/8 INCH IRON ROD SET
 - ⊙ MAG NAIL SET
 - 5/8 INCH IRON ROD FOUND
 - ⊗ MAG NAIL FOUND
 - ⊗ RAILROAD SPIKE FOUND
 - ⊗ 5 INCH SQUARE CONCRETE POST FOUND
 - 1-1/2 INCH IRON PIPE FOUND
 - ⊗ 1 INCH IRON PIPE FOUND



SECTION 18, TOWN 3, RANGE 13
SECTION 12, TOWN 3, RANGE 13

18 | 12
17 | 11



SURVEY OF THREE TRACTS OUT OF THE
STEVEN L. MEADE AND LORI M. MEADE
ORIGINAL 38.459 ACRE TRACT
OFFICIAL RECORD 459, PAGE 821
TRACT I
SECTION 12, TOWN 3, RANGE 13
MIAMI TOWNSHIP
LOGAN COUNTY, OHIO

2 WORKING DAYS
BEFORE YOU DIG
CALL TOLL FREE 800-362-2764
OHIO UTILITIES PROTECTION SERVICE

SURVEYED BY:
Jeffrey L. Lee
JEFFREY L. LEE
PROFESSIONAL SURVEYOR 6359
OCTOBER 30, 2000
REVISED: DECEMBER 1, 2000
COPYRIGHT 2000 BY:
LEE SURVEYING & MAPPING CO., INC.
117 North Medriver Street
BELLEFONTAINE, OHIO 43311
(937) 593-7335
D-390 SMEAD633 SMEAD63.DAT L-3010-2
ORIGINAL STAMP IN GREEN

INDEXED ON MAP
4148 2P

REC'D 10-3-00 SMY OK ✓

Lee Surveying and Mapping Co., Inc.

Land Surveys • Topography • Subdivisions • Construction Layout

117 N. Madriver St.
Bellefontaine OH 43311



Phone: (937) 593-7335
Fax: (937) 593-7444

MEADE 1.055 ACRES

Lying in Section 12, Town 3, Range 13, Miami Township, Logan County, Ohio.

Being out of the Steven L Meade and Lori M. Meade original 38.459 acre tract as deeded and described in Official Record 459, Page 821, Tract I of the Logan County Records of Deeds and being more particularly described as follows:

Beginning at a 5/8 inch iron rod found at the intersection of the center-lines of County Highway 63 and County Highway 64 at station 27 + 19.90 of the Logan County Engineer's files Field Book 587, Page 43.

THENCE, with the centerline of County Highway 63, N 82°-16'-00" W, a distance of 901.94 feet to a railroad spike found at the TRUE POINT OF BEGINNING.

THENCE, with the centerline of County Highway 63, N 82°-16'-00" W, a distance of 197.34 feet to a MAG nail set.

THENCE, N 07°-44'-00" E, a distance of 245.60 feet to a 5/8 inch iron rod set, passing a 5/8 inch iron rod set at 30.00 feet.

THENCE, S 82°-16'-00" E, a distance of 94.50 feet to a 5/8 inch iron rod set.

THENCE, S 86°-52'-27" E, a distance of 36.46 feet to a 5/8 inch iron rod set.

THENCE, S 82°-16'-00" E, a distance of 48.78 feet to a 5/8 inch iron rod set.

THENCE, S 07°-44'-00" W, a distance of 64.47 feet to a 5/8 inch iron rod found.

THENCE, with the west line of the Gary Goings 1.001 acre tract (O.R. 448, Pg. 149), S 02°-14'-00" W, a distance of 184.91 feet to the place of beginning, passing a 5/8 inch iron rod found a distance of 157.44 feet.

Containing 1.055 acre of which 0.135 is within the highway right-of-way.

The basis for bearings is the center line of County Highway 63 being, N 82°-16'-00" W, and all other bearings are from angles and distances measured in a field survey by Lee Surveying and Mapping Co., Inc. on September 18, 2000.

Description prepared by:

Jeffrey I. Lee
Professional Surveyor 6359
September 20, 2000
Revised September 29, 2000



ORIGINAL STAMP IN GREEN

L-3010

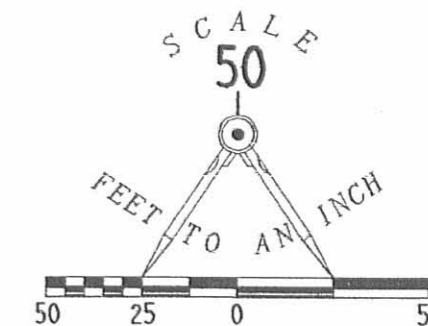
INDEXED ON MAP
448 3D

REC'D 9-27-00 SWM OK

STEVEN L. MEADE
AND LORI M. MEADE
ORIG. 38.459 ACRE
O.R. 459, PG. 821M
TRACT 1

1.055 ACRES
OF WHICH 0.135 ACRE IS WITHIN
THE HIGHWAY RIGHT-OF-WAY

GARY GOINGS
AND LINDA GOINGS
1.001 ACRE
O.R. 448, PG. 149



LEGEND:

- 5/8 INCH IRON ROD SET
- ⊙ MAG NAIL SET
- 5/8 INCH IRON ROD FOUND
- ⊗ RAILROAD SPIKE FOUND

**SURVEY OF 1.055 ACRES OUT OF THE
STEVEN L. MEADE AND LORI M. MEADE
ORIGINAL 38.459 ACRE TRACT
OFFICIAL RECORD 459, PAGE 821, TRACT 1
SECTION 12, TOWN 3, RANGE 13
MIAMI TOWNSHIP
LOGAN COUNTY, OHIO**

2 WORKING DAYS
BEFORE YOU DIG
CALL TOLL FREE **800-362-2764**
OHIO UTILITIES PROTECTION SERVICE.

INDEXED ON MAP
4148 3P

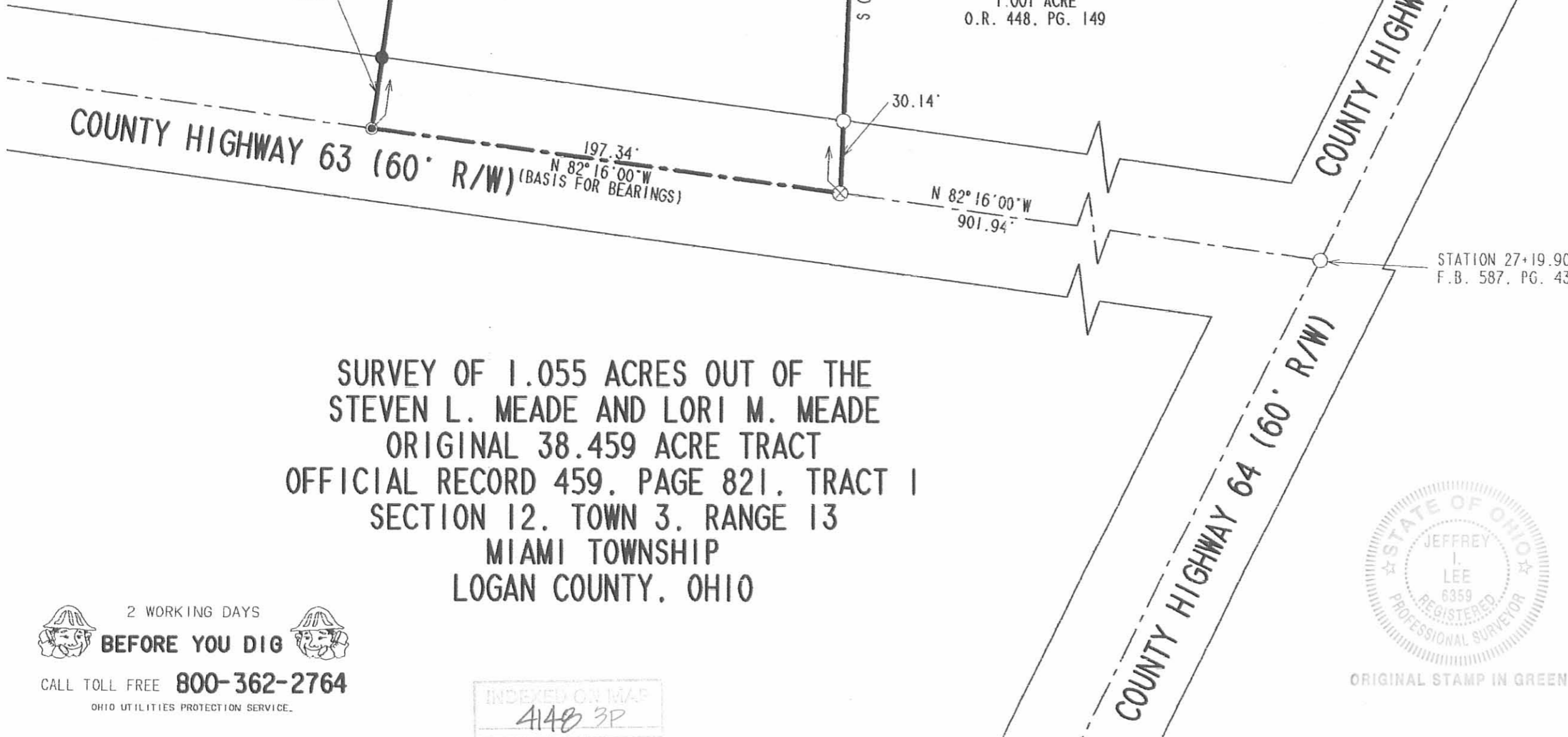


ORIGINAL STAMP IN GREEN

SURVEYED BY:
[Signature]
JEFFREY I. LEE
PROFESSIONAL SURVEYOR 6359
SEPTEMBER 18, 2000

COPYRIGHT 2000 BY:
LEE SURVEYING & MAPPING CO., INC.
117 North Madriver Street
BELLEFONTAINE, OHIO 43311
(937) 593-7335

D-386 SMEADE63 L-3010-3



REC'D 9-12-95 SMLY OK ✓



Lee Surveying and Mapping Co.



Farm Surveys • Lot Surveys • Topography • Subdivisions • Construction Layout

143 EAST COLUMBUS AVENUE
BELLEFONTAINE, OHIO 43311

(513) 593-7335

JEFFREY I. LEE, P.S.

J. MALCOLM MEADE 17.013 ACRES

Lying in Section 12, Town 3, Range 13, Village of Degraff and Miami Township, Logan County, Ohio.

Being out of the J. Malcolm Meade original 108.16 acre tract as deeded and described in Volume 282, Page 29, Tracts I & II of the Logan County Records of Deeds and being more particularly described as follows:

Beginning at a 3/4 inch iron bar found at an angle in the center-line of Mill Street (Township Road 256 at Station 17+00, Logan County Engineer's Field Book 490, Pages 75-78) and a west corporation line of the Village of Degraff.

THENCE, with the center-line of Mill Street (60 feet wide), N 4°-58'-19" E, a distance of 98.55 feet to a railroad spike set at the TRUE POINT OF BEGINNING.

THENCE, S 63°-25'-25" W, a distance of 2000.38 feet to a 5/8 inch iron rod set.

THENCE, N 75°-53'-19" W, a distance of 314.90 feet to a 5/8 inch iron rod set.

THENCE, with the south lines of the Dale Wade 58.579 acre tract (O.R. 104, Pg. 934) the following five courses:

N 48°-32'-17" E, a distance of 420.59 feet to a 5/8 inch iron rod set.

N 52°-18'-19" E, a distance of 100.00 feet to a 5/8 inch iron rod set.

N 59°-02'-52" E, a distance of 100.00 feet to a 5/8 inch iron rod set.

N 62°-12'-17" E, a distance of 100.00 feet to a 5/8 inch iron rod set.

N 63°-25'-25" E, a distance of 1711.60 feet to a mine spike found.

THENCE, with the center-line of Mill Street the following two courses:

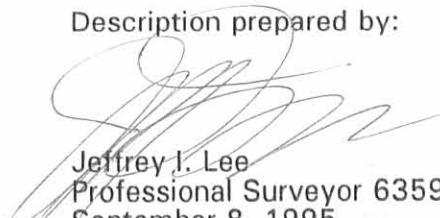
S 40°-32'-32" E, a distance of 40.00 feet to a 5/8 inch iron rod set.

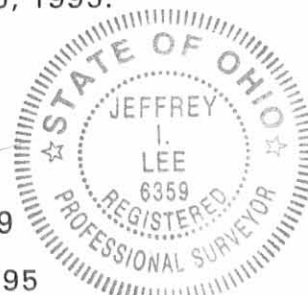
S 4°-58'-19" W, a distance of 356.21 feet to the point of beginning.

Containing 17.013 acres of which 0.600 acre is in the Village of Degraff with 0.273 acre in the right-of-way of Mill Street.

The basis for bearings is based upon the south line of the aforementioned 58.579 acre tract being N 63°-25'-25" E, and all other bearings are from angles and distances measured in a field survey by Lee Surveying and Mapping Company on September 5, 1995.

Description prepared by:


Jeffrey I. Lee
Professional Surveyor 6359
September 8, 1995
Revised September 12, 1995



INDEXED ON MAP
4148 4D

ORIGINAL STAMP IN GREEN L 2324

REFERENCES

LOGAN COUNTY ENGINEER'S FILES:
 FIELD BOOK 490, PAGES 75-78
 X-256
 R-1461
 R-2744

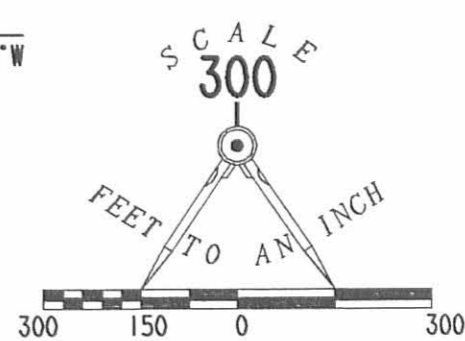
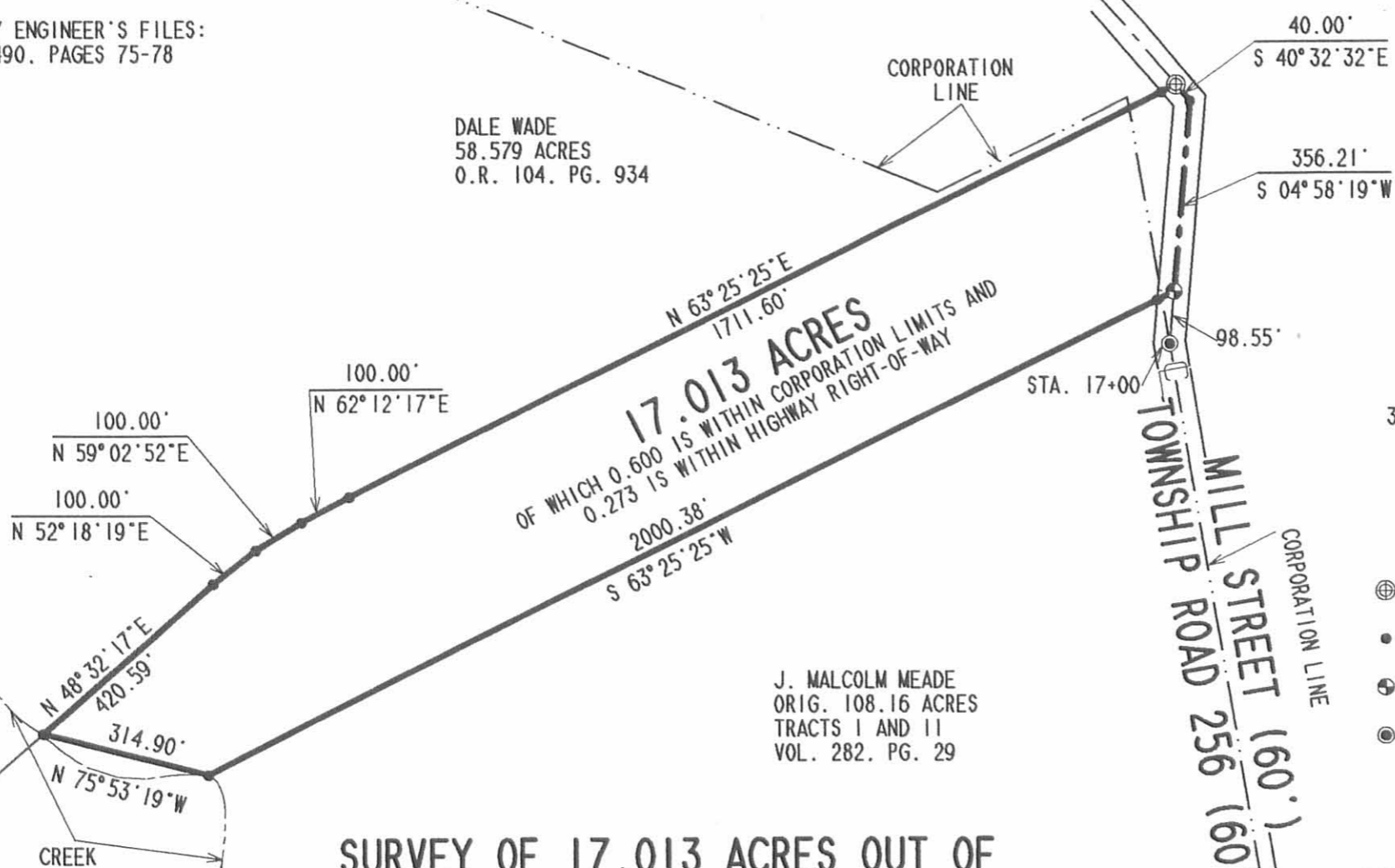
VILLAGE OF DEGRAFF

DALE WADE
 58.579 ACRES
 O.R. 104. PG. 934

17.013 ACRES
 OF WHICH 0.600 IS WITHIN CORPORATION LIMITS AND
 0.273 IS WITHIN HIGHWAY RIGHT-OF-WAY

J. MALCOLM MEADE
 ORIG. 108.16 ACRES
 TRACTS I AND II
 VOL. 282. PG. 29

**SURVEY OF 17.013 ACRES OUT OF
 THE J. MALCOLM MEADE ORIGINAL 108.16 ACRES
 VOLUME 282. PAGE 29. TRACTS I AND II
 SECTION 12. TOWN 3. RANGE 13
 VILLAGE OF DEGRAFF AND
 MIAMI TOWNSHIP
 LOGAN COUNTY, OHIO**



LEGEND

- ⊕ MINE SPIKE FOUND
- 5/8" IRON ROD SET
- ⊙ RAILROAD SPIKE SET
- ⊙ 3/4" IRON BAR FOUND

INDEXED ON MAP
 4148 4P



ORIGINAL STAMP IN GREEN

SURVEYED BY

JEFFREY I. LEE
 PROFESSIONAL SURVEYOR 6359
 SEPTEMBER 5, 1995
 REV. SEPTEMBER 12, 1995

COPYRIGHT 1995 BY:
LEE SURVEYING & MAPPING CO.
 143 East Columbus Avenue
 BELLEFONTAINE, OHIO 43311
 (513) 593-7335

2 WORKING DAYS
BEFORE YOU DIG
 CALL TOLL FREE **800-362-2764**
 OHIO UTILITIES PROTECTION SERVICE.

D 265 GMEADE

L-2324-4

Received 11-2-00 OKJH

Lee Surveying and Mapping Co., Inc.

Land Surveys • Topography • Subdivisions • Construction Layout

117 N. Madriver St.
Bellefontaine OH 43311



Phone: (937) 593-7335
Fax: (937) 593-7444

MEADE TRACT A 0.813 ACRE

Lying in Section 12, Town 3, Range 13, Miami Township, Logan County, Ohio.

Being out of the Steven L. Meade and Lori M. Meade 6.777 acre tract as deeded and described in Official Record 476, Page 419 of the Logan County Records of Deeds and being more particularly described as follows:

Beginning at a MAG nail set at the intersection of the west line of Section 12 and the center-line of County Highway 63.

THENCE, with the west line of Section 12 and the east line of the Arnold O. Thompson, Jr. 7.71 acre tract (O.R. 176, Pg. 788), N 0°-20'-12" E, a distance of 272.86 feet to a 5/8 inch iron rod set, passing a 5/8 inch iron rod set at 30.03 feet.

THENCE, with the south line of the C.C.C. & St. Louis Railroad 22.680 acre tract (Vol. 129, Pg. 390), N 80°-33'-39" E, a distance of 121.27 feet to a 5/8 inch iron rod set.

THENCE, S 2°-16'-49" E, a distance of 287.69 feet to a MAG nail set, passing a 5/8 inch iron rod set at 257.69 feet.

THENCE, with the center-line of County Highway 63, S 87°-43'-11" W, a distance of 132.79 feet to the place of beginning.

Containing 0.813 acre of which 0.091 acre is within the highway right-of-way.

The basis for bearings is the center-line of County Highway 63 west of County Highway 64 being N 82°-16'-00" W, and all other bearings are from angles and distances measured in a field survey by Lee Surveying and Mapping Co., Inc. on October 30, 2000.

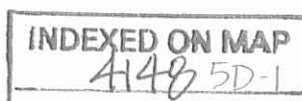
Description prepared by:



ORIGINAL STAMP IN GREEN

A handwritten signature in black ink, appearing to read 'Jeffrey I. Lee'.
Jeffrey I. Lee
Professional Surveyor 6359
November 6, 2000

L-3010



Lee Surveying and Mapping Co., Inc.

Land Surveys • Topography • Subdivisions • Construction Layout

117 N. Madriver St.
Bellefontaine OH 43311



Phone: (937) 593-7335
Fax: (937) 593-7444

MEADE TRACT N 1.199 ACRES

Lying in Section 12, Town 3, Range 13, Miami Township, Logan County, Ohio.

Being out of the Steven L. Meade and Lori M. Meade 5.286 acre tract as deeded and described in Official Record 476, Page 421 of the Logan County Records of Deeds and being more particularly described as follows:

Beginning at a MAG nail set at the intersection of the west line of Section 12 and the center-line of County Highway 63.

THENCE, with the center-line of County Highway 63 (60 feet wide), N 87°-43'-11" E, a distance of 1332.79 feet to a MAG nail set at the TRUE POINT OF BEGINNING.

THENCE, N 2°-16'-49" W, a distance of 296.74 feet to a 5/8 inch iron rod set, passing a 5/8 inch iron rod set at 30.00 feet.

THENCE, with the south line of the remainder of the Steven L. Meade original 38.459 acre tract (O.R. 459, Pg. 821, Tract I), N 87°-43'-11" E, a distance of 105.87 feet to a point, passing a 5/8 inch iron rod set at 100.87 feet.

THENCE, with the south line of the remainder of the said 38.459, S 82°-16'-00" E, a distance of 96.12 feet to a 5/8 inch iron rod set, passing a 5/8 inch iron rod set at 5.00 feet.

THENCE, S 7°-44'-00" W, a distance of 296.74 feet to a MAG nail set, passing a 5/8 inch iron rod set at 266.74 feet.

THENCE, with the center-line of County Highway 63, N 82°-16'-00" W, a distance of 70.13 feet to a railroad spike found.

THENCE, continuing with the center-line of County Highway 63, S 87°-43'-11" W, a distance of 79.87 feet to the place of beginning.

Containing 1.199 acres of which 0.105 acre is within the highway right-of-way.

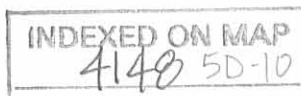
The basis for bearings is the center-line of County Highway 63 west of County Highway 64 being N 82°-16'-00" W, and all other bearings are from angles and distances measured in a field survey by Lee Surveying and Mapping Co., Inc. on October 30, 2000.

Description prepared by:


Jeffrey I. Lee
Professional Surveyor 6359
November 6, 2000



L-3010



Lee Surveying and Mapping Co., Inc.

Land Surveys • Topography • Subdivisions • Construction Layout

117 N. Madriver St.
Bellefontaine OH 43311



Phone: (937) 593-7335
Fax: (937) 593-7444

MEADE TRACT P 1.022 ACRES

Lying in Section 12, Town 3, Range 13, Miami Township, Logan County, Ohio.

Being out of the Steven L. Meade and Lori M. Meade 5.286 acre tract as deeded and described in Official Record 476, Page 421 of the Logan County Records of Deeds and being more particularly described as follows:

Beginning at a MAG nail set at the intersection of the west line of Section 12 and the center-line of County Highway 63.

THENCE, with the center-line of County Highway 63 (60 feet wide), N 87°-43'-11" E, a distance of 1412.66 feet to a railroad spike found.

THENCE, continuing with the center-line of County Highway 63, S 82°-16'-00" E, a distance of 70.13 feet to a MAG nail set at the TRUE POINT OF BEGINNING.

THENCE, N 7°-44'-00" E, a distance of 296.74 feet to a 5/8 inch iron rod set, passing a 5/8 inch iron rod set at 30.00 feet.

THENCE, with the south line of the remainder of the Steven L. Meade original 38.459 acre tract (O.R. 459, Pg. 821, Tract I), S 82°-16'-00" E, a distance of 150.00 feet to a 5/8 inch iron rod set.

THENCE, with a west line of the remainder of the said 38.459 acre tract, S 7°-44'-00" W, a distance of 296.74 feet to a MAG nail set, passing a 5/8 inch iron rod set at 266.74 feet.

THENCE, with the center-line of County Highway 63, N 82°-16'-00" W, a distance of 150.00 feet to the point of beginning.

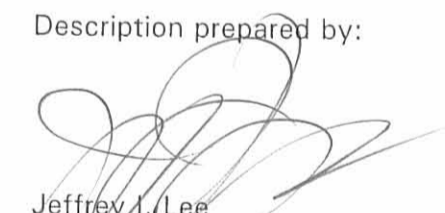
Containing 1.022 acres of which 0.103 acre is within the highway right-of-way.

The basis for bearings is the center-line of County Highway 63 west of County Highway 64 being N 82°-16'-00" W, and all other bearings are from angles and distances measured in a field survey by Lee Surveying and Mapping Co., Inc. on October 30, 2000.

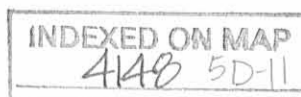
Description prepared by:



ORIGINAL STAMP IN GREEN


Jeffrey I. Lee
Professional Surveyor 6359
November 6, 2000

L-3010



Lee Surveying and Mapping Co., Inc.

Land Surveys • Topography • Subdivisions • Construction Layout

117 N. Madriver St.
Bellefontaine OH 43311



Phone: (937) 593-7335
Fax: (937) 593-7444

MEADE TRACT Q 11.281 ACRES

Lying in Section 12, Town 3, Range 13, Miami Township, Logan County, Ohio.

Being out of the Steven L. Meade and Lori M. Meade original 38.459 acre tract as deeded and described in Official Record 459, Page 821, Tract I of the Logan County Records of Deeds and being more particularly described as follows:

Beginning at a 5/8 inch iron rod found at the intersection of the center-lines of County Highway 63 and County Highway 64.

THENCE, with the center-line of County Highway 63 (60 feet wide), N 82°-16'-00" W, a distance of 1099.28 feet to a MAG nail found at the TRUE POINT OF BEGINNING.

THENCE, continuing with the center-line of County Highway 63, N 82°-16'-00" W, a distance of 60.00 feet to a MAG nail set.

THENCE, with the lines of the Steven L. Meade 5.286 acre tract (O.R. 476, Pg. 421), the following three (3) courses:

N 7°-44'-00" E, a distance of 296.74 feet to a 5/8 inch iron rod set, passing a 5/8 inch iron rod set at 30.00 feet.

N 82°-16'-00" W, a distance of 246.12 feet to a point, passing a 5/8 inch iron rod set at 241.12 feet.

S 87°-43'-11" W, a distance of 555.87 feet to a 5/8 inch iron rod set, passing a 5/8 inch iron rod set at 5.00 feet.

THENCE, with the east line of the Steven L. Meade 6.777 acre tract (O.R. 476, Pg. 419), N 2°-16'-49" W, a distance of 120.86 feet to a 5/8 inch iron rod set.

THENCE, with the south line of the C.C.C. & St. Louis Railroad 22.680 acre tract (Vol. 129, Pg. 390), a curve to the left having a central angle of 9°-44'-39", a radius of 7823.25 feet, an arc length of 1330.50 feet, and having a chord bearing N 70°-13'-59" E, a distance of 1328.89 feet to a 5 inch square concrete post found.

THENCE, S 3°-17'-53" E, a distance of 797.60 feet to a 5/8 inch iron rod found.

THENCE, with the lines of the Gary Goings 1.001 acre tract (O.R. 448, Pg. 149), the following two (2) courses:

N 82°-08'-11" W, a distance of 67.21 feet to a 5/8 inch iron rod found.

N 73°-03'-25" W, a distance of 212.73 feet to a 5/8 inch iron rod found.

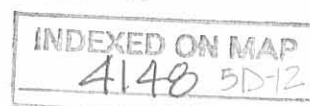
THENCE, with the lines of the Boyd David Manning 1.055 acre tract (O.R. 468, Pg. 882, Tract I), the following five courses:

N 7°-44'-00" E, a distance of 64.47 feet to a 5/8 inch iron rod found.

N 82°-16'-00" W, a distance of 48.78 feet to a 5/8 inch iron rod found.

N 86°-52'-27" W, a distance of 36.46 feet to a 5/8 inch iron rod found.

N 82°-16'-00" W, a distance of 94.50 feet to a 5/8 inch iron rod found.



Lee Surveying and Mapping Co., Inc.

Land Surveys • Topography • Subdivisions • Construction Layout

117 N. Madriver St.
Bellefontaine OH 43311



Phone: (937) 593-7335
Fax: (937) 593-7444

S 7°-44'-00" W, a distance of 245.60 feet to the point of beginning, passing a 5/8 inch iron rod found at 215.60 feet.

Containing 11.281 acres of which 0.041 acre is within the highway right-of-way.

The basis for bearings is the center-line of County Highway 63 west of County Highway 64 being N 82°-16'-00" W, and all other bearings are from angles and distances measured in a field survey by Lee Surveying and Mapping Co., Inc. on October 30, 2000.



ORIGINAL STAMP IN GREEN

Description prepared by:

A handwritten signature in black ink, appearing to read 'J. Lee', written over the typed name and title.

Jeffrey I. Lee
Professional Surveyor 6359
November 6, 2000

L-3010

INDEXED ON MAP
4148 5D-13

Lee Surveying and Mapping Co., Inc.

Land Surveys • Topography • Subdivisions • Construction Layout

117 N. Madriver St.
Bellefontaine OH 43311



Phone: (937) 593-7335
Fax: (937) 593-7444

MEADE TRACT R 10.549 ACRES

Lying in Section 12, Town 3, Range 13, Miami Township, Logan County, Ohio.

Being out of the Steven L. Meade and Lori M. Meade original 38.459 acre tract as deeded and described in Official Record 459, Page 821, Tract I of the Logan County Records of Deeds and being more particularly described as follows:

Beginning at a 5/8 inch iron rod found at the intersection of the center-lines of County Highway 63 and County Highway 64.

THENCE, with the center-line of County Highway 63 (60 feet wide), N 82°-16'-00" W, a distance of 389.79 feet to a railroad spike found at the TRUE POINT OF BEGINNING.

THENCE, continuing with the center-line of County Highway 63, N 82°-16'-00" W, a distance of 252.67 feet to a railroad spike found.

THENCE, with the east line of the Gary Goings 1.001 acre tract (O.R. 448, Pg. 149), N 7°-43'-59" E, a distance of 149.86 feet to a 5/8 inch iron rod found, passing a 5/8 inch iron rod found at 30.00 feet.

THENCE, N 3°-17'-53" W, a distance of 797.60 feet to a 5 inch square concrete post found.

THENCE, with the southerly line of C.C.C. & St. Louis Railroad 22.680 acre tract (Vol. 129, Pg. 390), N 16°-52'-33" W, a distance of 55.51 feet to a 5 inch square concrete post found.

THENCE, continuing with the C.C.C. & St. Louis Railroad tract, a curve to the left with a central angle of 2°-35'-24", a radius of 7768.25 feet, an arc length of 351.14 feet, a tangent of 175.60 feet, a chord length of 351.11 feet and a chord bearing N 64°-00'-39" E, to a point, passing a 5/8 inch iron rod set at a chord length of 343.54 feet.

THENCE, with the west line of the J. Malcolm Meade 108.00 acre tract (Vol. 282, Pg. 29), S 19°-07'-49" E, a distance of 993.26 feet to a 1-1/2 inch iron pipe found.

THENCE, with the lines of the William L. Weiskittle 2.28 acre tract (O.R. 31, Pg. 327), the following three courses:

N 81°-39'-19" W, a distance of 200.00 feet to a 1 inch iron pipe found.

S 43°-33'-01" W, a distance of 138.80 feet to a point in water.

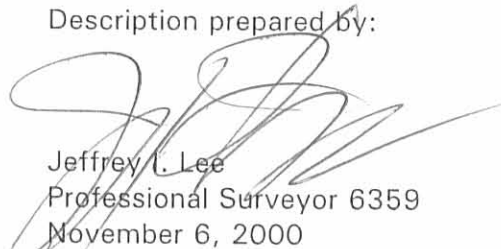
S 17°-29'-25" W, a distance of 184.30 feet to the place of beginning.

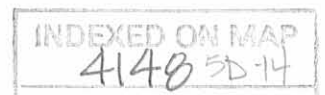
Containing 10.549 acres of which 0.176 acre is within the highway right-of-way.

The basis for bearings is the center-line of County Highway 63 west of County Highway 64 being N 82°-16'-00" W, and all other bearings are from angles and distances measured in a field survey by Lee Surveying and Mapping Co., Inc. on October 30, 2000.

Description prepared by:




Jeffrey T. Lee
Professional Surveyor 6359
November 6, 2000



Lee Surveying and Mapping Co., Inc.

Land Surveys • Topography • Subdivisions • Construction Layout

117 N. Madriver St.
Bellefontaine OH 43311



Phone: (937) 593-7335
Fax: (937) 593-7444

MEADE TRACT E 1.024 ACRES

Lying in Section 12, Town 3, Range 13, Miami Township, Logan County, Ohio.

Being out of the Steven L. Meade and Lori M. Meade 6.777 acre tract as deeded and described in Official Record 476, Page 419 of the Logan County Records of Deeds and being more particularly described as follows:

Beginning at a MAG nail set at the intersection of the west line of Section 12 and the center-line of County Highway 63.

THENCE, with the center-line of County Highway 63 (60 feet wide), N 87°-43'-11" E, a distance of 132.79 feet to a MAG nail set at the TRUE POINT OF BEGINNING.

THENCE, N 2°-16'-49" W, a distance of 287.69 feet to a 5/8 inch iron rod set, passing a 5/8 inch iron rod set at 30.00 feet.

THENCE, with the south line of the C.C.C. & St. Louis Railroad 22.680 acre tract (Vol. 129, Pg. 390), N 80°-33'-39" E, a distance of 16.56 feet to a 5/8 inch iron rod set.

THENCE, with the south line of the said 22.680 acre tract, a curve to the left having a central angle of 0°-59'-13", a radius of 7823.25 feet, an arc length of 134.77 feet and having a chord bearing N 80°-04'-02" E, a distance of 134.77 feet to a 5/8 inch iron rod set.

THENCE, S 2°-16'-49" E, a distance of 307.70 feet to a MAG nail set, passing a 5/8 inch iron rod set at 277.70 feet.

THENCE, with the center-line of County Highway 63, S 87°-43'-11" W, a distance of 150.00 feet to the place of beginning.

Containing 1.024 acre of which 0.103 acre is within the highway right-of-way.

The basis for bearings is the center-line of County Highway 63 west of County Highway 64 being N 82°-16'-00" W, and all other bearings are from angles and distances measured in a field survey by Lee Surveying and Mapping Co., Inc. on October 30, 2000.



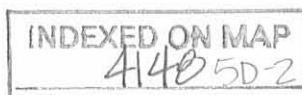
ORIGINAL STAMP IN GREEN

Description prepared by:

A handwritten signature in black ink, appearing to read 'Jeffrey I. Lee'.

Jeffrey I. Lee
Professional Surveyor 6359
November 6, 2000

L-3010



Lee Surveying and Mapping Co., Inc.

Land Surveys • Topography • Subdivisions • Construction Layout

117 N. Madriver St.
Bellefontaine OH 43311



Phone: (937) 593-7335
Fax: (937) 593-7444

MEADE TRACT F 1.098 ACRES

Lying in Section 12, Town 3, Range 13, Miami Township, Logan County, Ohio.

Being out of the Steven L. Meade and Lori M. Meade 6.777 acre tract as deeded and described in Official Record 476, Page 419 of the Logan County Records of Deeds and being more particularly described as follows:

Beginning at a MAG nail set at the intersection of the west line of Section 12 and the center-line of County Highway 63.

THENCE, with the center-line of County Highway 63 (60 feet wide), N 87°-43'-11" E, a distance of 282.79 feet to a MAG nail set at the TRUE POINT OF BEGINNING.

THENCE, N 2°-16'-49" W, a distance of 307.70 feet to a 5/8 inch iron rod set, passing a 5/8 inch iron rod set at 30.00 feet.

THENCE, with the south line of the C.C.C. & St. Louis Railroad 22.680 acre tract (Vol. 129, Pg. 390), a curve to the left having a central angle of 1°-06'-41", a radius of 7823.25 feet, an arc length of 151.75 feet and having a chord bearing N 79°-01'-05" E, a distance of 151.75 feet to a 5/8 inch iron rod set.

THENCE, S 2°-16'-49" E, a distance of 330.66 feet to a MAG nail set, passing a 5/8 inch iron rod set at 300.66 feet.

THENCE, with the center-line of County Highway 63, S 87°-43'-11" W, a distance of 150.00 feet to the place of beginning.

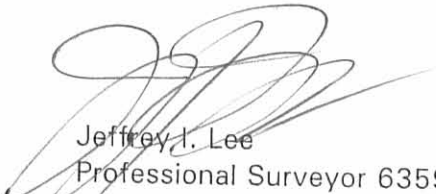
Containing 1.098 acre of which 0.103 acre is within the highway right-of-way.

The basis for bearings is the center-line of County Highway 63 west of County Highway 64 being N 82°-16'-00" W, and all other bearings are from angles and distances measured in a field survey by Lee Surveying and Mapping Co., Inc. on October 30, 2000.

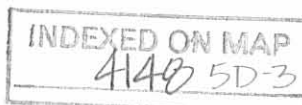
Description prepared by:



ORIGINAL STAMP IN GREEN


Jeffrey I. Lee
Professional Surveyor 6359
November 6, 2000

L-3010



Lee Surveying and Mapping Co., Inc.

Land Surveys • Topography • Subdivisions • Construction Layout

117 N. Madriver St.
Bellefontaine OH 43311



Phone: (937) 593-7335
Fax: (937) 593-7444

MEADE TRACT G 1.182 ACRES

Lying in Section 12, Town 3, Range 13, Miami Township, Logan County, Ohio.

Being out of the Steven L. Meade and Lori M. Meade 6.777 acre tract as deeded and described in Official Record 476, Page 419 of the Logan County Records of Deeds and being more particularly described as follows:

Beginning at a MAG nail set at the intersection of the west line of Section 12 and the center-line of County Highway 63.

THENCE, with the center-line of County Highway 63 (60 feet wide), N 87°-43'-11" E, a distance of 432.79 feet to a MAG nail set at the TRUE POINT OF BEGINNING.

THENCE, N 2°-16'-49" W, a distance of 330.66 feet to a 5/8 inch iron rod set, passing a 5/8 inch iron rod set at 30.00 feet.

THENCE, with the south line of the C.C.C. & St. Louis Railroad 22.680 acre tract (Vol. 129, Pg. 390), a curve to the left having a central angle of 1°-06'-54", a radius of 7823.25 feet, an arc length of 152.23 feet and having a chord bearing N 77°-54'-18" E, a distance of 152.23 feet to a 5/8 inch iron rod set.

THENCE, S 2°-16'-49" E, a distance of 356.60 feet to a MAG nail set, passing a 5/8 inch iron rod set at 326.60 feet.

THENCE, with the center-line of County Highway 63, S 87°-43'-11" W, a distance of 150.00 feet to the place of beginning.

Containing 1.182 acre of which 0.103 acre is within the highway right-of-way.

The basis for bearings is the center-line of County Highway 63 west of County Highway 64 being N 82°-16'-00" W, and all other bearings are from angles and distances measured in a field survey by Lee Surveying and Mapping Co., Inc. on October 30, 2000.

Description prepared by:

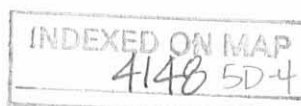


ORIGINAL STAMP IN GREEN

A handwritten signature in black ink, appearing to read 'Jeffrey I. Lee'.

Jeffrey I. Lee
Professional Surveyor 6359
November 6, 2000

L-3010



Lee Surveying and Mapping Co., Inc.

Land Surveys • Topography • Subdivisions • Construction Layout

117 N. Madriver St.
Bellefontaine OH 43311



Phone: (937) 593-7335
Fax: (937) 593-7444

MEADE TRACT H 1.277 ACRES

Lying in Section 12, Town 3, Range 13, Miami Township, Logan County, Ohio.

Being out of the Steven L. Meade and Lori M. Meade 6.777 acre tract as deeded and described in Official Record 476, Page 419 of the Logan County Records of Deeds and being more particularly described as follows:

Beginning at a MAG nail set at the intersection of the west line of Section 12 and the center-line of County Highway 63.

THENCE, with the center-line of County Highway 63 (60 feet wide), N 87°-43'-11" E, a distance of 582.79 feet to a MAG nail set at the TRUE POINT OF BEGINNING.

THENCE, N 2°-16'-49" W, a distance of 356.60 feet to a 5/8 inch iron rod set, passing a 5/8 inch iron rod set at 30.00 feet.

THENCE, with the south line of the C.C.C. & St. Louis Railroad 22.680 acre tract (Vol. 129, Pg. 390), a curve to the left having a central angle of 1°-07'-08", a radius of 7823.25 feet, an arc length of 152.77 feet and having a chord bearing N 76°-47'-17" E, a distance of 152.77 feet to a 5/8 inch iron rod set.

THENCE, S 2°-16'-49" E, a distance of 385.58 feet to a MAG nail set, passing a 5/8 inch iron rod set at 355.58 feet.

THENCE, with the center-line of County Highway 63, S 87°-43'-11" W, a distance of 150.00 feet to the place of beginning.

Containing 1.277 acre of which 0.103 acre is within the highway right-of-way.

The basis for bearings is the center-line of County Highway 63 west of County Highway 64 being N 82°-16'-00" W, and all other bearings are from angles and distances measured in a field survey by Lee Surveying and Mapping Co., Inc. on October 30, 2000.



ORIGINAL STAMP IN GREEN

Description prepared by:

A handwritten signature in black ink, appearing to read 'Jeffrey I. Lee', written over a light background.

Jeffrey I. Lee
Professional Surveyor 6359
November 6, 2000

L-3010



Lee Surveying and Mapping Co., Inc.

Land Surveys • Topography • Subdivisions • Construction Layout

117 N. Madriver St.
Bellefontaine OH 43311



Phone: (937) 593-7335
Fax: (937) 593-7444

MEADE TRACT J 1.382 ACRES

Lying in Section 12, Town 3, Range 13, Miami Township, Logan County, Ohio.

Being out of the Steven L. Meade and Lori M. Meade 6.777 acre tract as deeded and described in Official Record 476, Page 419 of the Logan County Records of Deeds and being more particularly described as follows:

Beginning at a MAG nail set at the intersection of the west line of Section 12 and the center-line of County Highway 63.

THENCE, with the center-line of County Highway 63 (60 feet wide), N 87°-43'-11" E, a distance of 732.79 feet to a MAG nail set at the TRUE POINT OF BEGINNING.

THENCE, N 2°-16'-49" W, a distance of 385.58 feet to a 5/8 inch iron rod set, passing a 5/8 inch iron rod set at 30.00 feet.

THENCE, with the south line of the C.C.C. & St. Louis Railroad 22.680 acre tract (Vol. 129, Pg. 390), a curve to the left having a central angle of 1°-07'-24", a radius of 7823.25 feet, an arc length of 153.38 feet and having a chord bearing N 75°-40'-01" E, a distance of 153.38 feet to a 5/8 inch iron rod set.

THENCE, with the west line of the remainder of the Steven L. Meade original 38.459 acre tract (O.R. 459, Pg. 821, Tract I) and the Steven L. Meade 5.286 acre tract (O.R. 476, Pg. 421), S 2°-16'-49" E, a distance of 417.60 feet to a MAG nail set, passing a 5/8 inch iron rod set at 387.60 feet.

THENCE, with the center-line of County Highway 63, S 87°-43'-11" W, a distance of 150.00 feet to the place of beginning.

Containing 1.382 acre of which 0.103 acre is within the highway right-of-way.

The basis for bearings is the center-line of County Highway 63 west of County Highway 64 being N 82°-16'-00" W, and all other bearings are from angles and distances measured in a field survey by Lee Surveying and Mapping Co., Inc. on October 30, 2000.



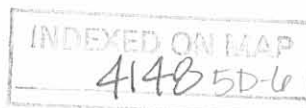
ORIGINAL STAMP IN GREEN

Description prepared by:

A handwritten signature in black ink, appearing to read 'Jeffrey I. Lee', written over a faint background.

Jeffrey I. Lee
Professional Surveyor 6359
November 6, 2000

L-3010



Lee Surveying and Mapping Co., Inc.

Land Surveys • Topography • Subdivisions • Construction Layout

117 N. Madriver St.
Bellefontaine OH 43311



Phone: (937) 593-7335
Fax: (937) 593-7444

MEADE TRACT K 1.022 ACRES

Lying in Section 12, Town 3, Range 13, Miami Township, Logan County, Ohio.

Being out of the Steven L. Meade and Lori M. Meade 5.286 acre tract as deeded and described in Official Record 476, Page 421 of the Logan County Records of Deeds and being more particularly described as follows:

Beginning at a MAG nail set at the intersection of the west line of Section 12 and the center-line of County Highway 63.

THENCE, with the center-line of County Highway 63 (60 feet wide), N 87°-43'-11" E, a distance of 882.79 feet to a MAG nail set at the TRUE POINT OF BEGINNING.

THENCE, with the east line of the Steven L. Meade 6.777 acre tract (O.R. 476, Pg. 419), N 2°-16'-49" W, a distance of 296.74 feet to a 5/8 inch iron rod set, passing a 5/8 inch iron rod set at 30.00 feet.

THENCE, with the south line of the remainder of the Steven L. Meade original 38.459 acre tract (O.R. 459, Pg. 821, Tract I), N 87°-43'-11" E, a distance of 150.00 feet to a 5/8 inch iron rod set.

THENCE, S 2°-16'-49" E, a distance of 296.74 feet to a MAG nail set, passing a 5/8 inch iron rod set at 266.74 feet.

THENCE, with the center-line of County Highway 63, S 87°-43'-11" W, a distance of 150.00 feet to the place of beginning.

Containing 1.022 acres of which 0.103 acre is within the highway right-of-way.

The basis for bearings is the center-line of County Highway 63 west of County Highway 64 being N 82°-16'-00" W, and all other bearings are from angles and distances measured in a field survey by Lee Surveying and Mapping Co., Inc. on October 30, 2000.

Description prepared by:

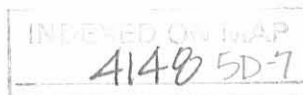


ORIGINAL STAMP IN GREEN

A handwritten signature in black ink, appearing to read 'Jeffrey I. Lee', written over a faint circular stamp.

Jeffrey I. Lee
Professional Surveyor 6359
November 6, 2000

L-3010



Lee Surveying and Mapping Co., Inc.

Land Surveys • Topography • Subdivisions • Construction Layout

117 N. Madriver St.
Bellefontaine OH 43311



Phone: (937) 593-7335
Fax: (937) 593-7444

MEADE TRACT L 1.022 ACRES

Lying in Section 12, Town 3, Range 13, Miami Township, Logan County, Ohio.

Being out of the Steven L. Meade and Lori M. Meade 5.286 acre tract as deeded and described in Official Record 476, Page 421 of the Logan County Records of Deeds and being more particularly described as follows:

Beginning at a MAG nail set at the intersection of the west line of Section 12 and the center-line of County Highway 63.

THENCE, with the center-line of County Highway 63 (60 feet wide), N 87°-43'-11" E, a distance of 1032.79 feet to a MAG nail set at the TRUE POINT OF BEGINNING.

THENCE, N 2°-16'-49" W, a distance of 296.74 feet to a 5/8 inch iron rod set, passing a 5/8 inch iron rod set at 30.00 feet.

THENCE, with the south line of the remainder of the Steven L. Meade original 38.459 acre tract (O.R. 459, Pg. 821, Tract I), N 87°-43'-11" E, a distance of 150.00 feet to a 5/8 inch iron rod set.

THENCE, S 2°-16'-49" E, a distance of 296.74 feet to a MAG nail set, passing a 5/8 inch iron rod set at 266.74 feet.

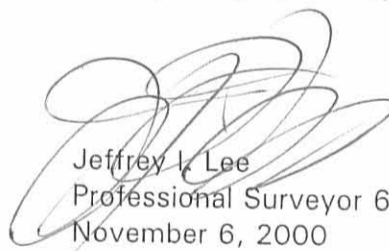
THENCE, with the center-line of County Highway 63, S 87°-43'-11" W, a distance of 150.00 feet to the place of beginning.

Containing 1.022 acres of which 0.103 acre is within the highway right-of-way.

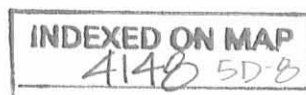
The basis for bearings is the center-line of County Highway 63 west of County Highway 64 being N 82°-16'-00" W, and all other bearings are from angles and distances measured in a field survey by Lee Surveying and Mapping Co., Inc. on October 30, 2000.

Description prepared by:




Jeffrey I. Lee
Professional Surveyor 6359
November 6, 2000

L-3010



Lee Surveying and Mapping Co., Inc.

Land Surveys • Topography • Subdivisions • Construction Layout

117 N. Madriver St.
Bellefontaine OH 43311



Phone: (937) 593-7335
Fax: (937) 593-7444

MEADE TRACT M 1.022 ACRES

Lying in Section 12, Town 3, Range 13, Miami Township, Logan County, Ohio.

Being out of the Steven L. Meade and Lori M. Meade 5.286 acre tract as deeded and described in Official Record 476, Page 421 of the Logan County Records of Deeds and being more particularly described as follows:

Beginning at a MAG nail set at the intersection of the west line of Section 12 and the center-line of County Highway 63.

THENCE, with the center-line of County Highway 63 (60 feet wide), N 87°-43'-11" E, a distance of 1182.79 feet to a MAG nail set at the TRUE POINT OF BEGINNING.

THENCE, N 2°-16'-49" W, a distance of 296.74 feet to a 5/8 inch iron rod set, passing a 5/8 inch iron rod set at 30.00 feet.

THENCE, with the south line of the remainder of the Steven L. Meade original 38.459 acre tract (O.R. 459, Pg. 821, Tract I), N 87°-43'-11" E, a distance of 150.00 feet to a 5/8 inch iron rod set.

THENCE, S 2°-16'-49" E, a distance of 296.74 feet to a MAG nail set, passing a 5/8 inch iron rod set at 266.74 feet.

THENCE, with the center-line of County Highway 63, S 87°-43'-11" W, a distance of 150.00 feet to the place of beginning.

Containing 1.022 acres of which 0.103 acre is within the highway right-of-way.

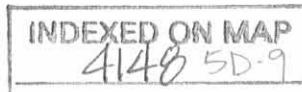
The basis for bearings is the center-line of County Highway 63 west of County Highway 64 being N 82°-16'-00" W, and all other bearings are from angles and distances measured in a field survey by Lee Surveying and Mapping Co., Inc. on October 30, 2000.

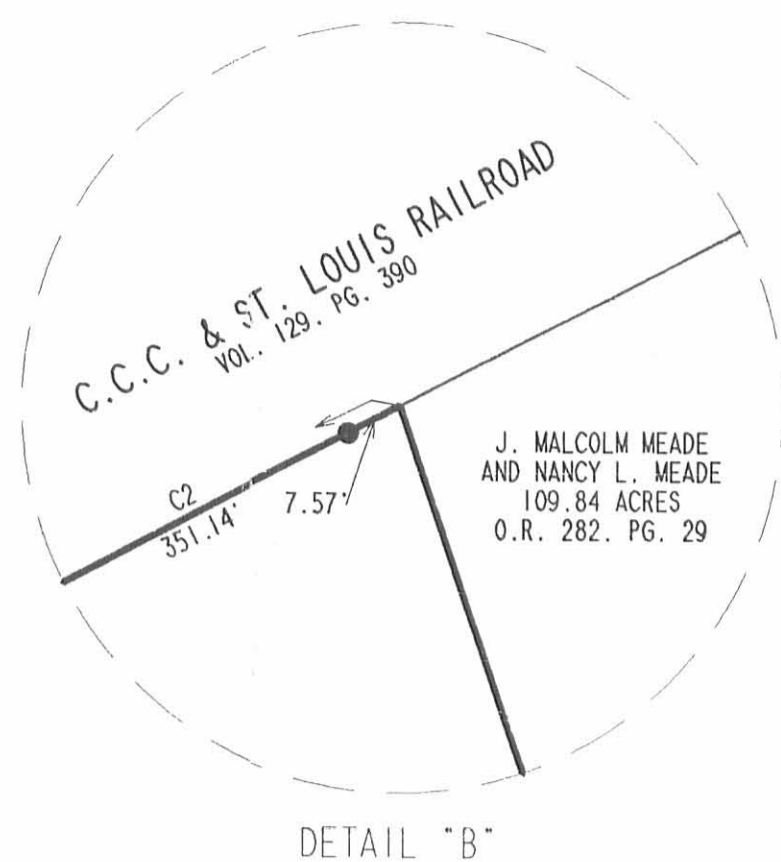
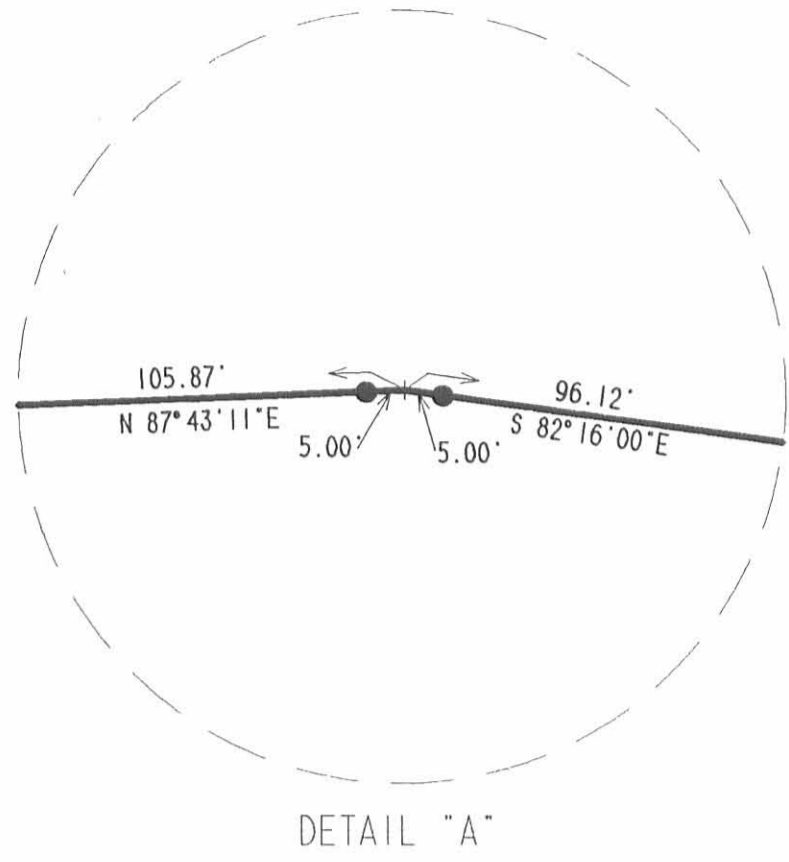


Description prepared by:

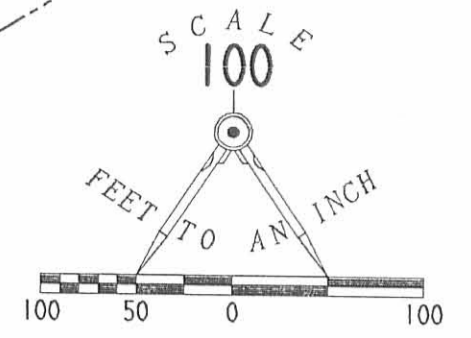
A handwritten signature in black ink, appearing to read 'Jeffrey J. Lee', is written over the typed name and title.
Jeffrey J. Lee
Professional Surveyor 6359
November 6, 2000

L-3010





CURVE	DELTA ANGLE	RADIUS	ARC	TANGENT	CHORD	CHORD BEARING
C 1	15° 11' 59"	7823.25'	2075.40'	1043.83'	2069.32'	N 72° 57' 39" E
C 2	2° 35' 24"	7768.25'	351.14'	175.60'	351.11'	N 64° 00' 39" E
C 3	9° 44' 39"	7823.25'	1330.50'	666.86'	1328.89'	N 70° 13' 59" E
C 4	1° 07' 24"	7823.25'	153.38'	76.69'	153.38'	N 75° 40' 01" E
C 5	1° 07' 08"	7823.25'	152.77'	76.39'	152.77'	N 76° 47' 17" E
C 6	1° 06' 54"	7823.25'	152.23'	76.12'	152.23'	N 77° 54' 18" E
C 7	1° 06' 41"	7823.25'	151.75'	75.88'	151.75'	N 79° 01' 05" E
C 8	0° 59' 13"	7823.25'	134.77'	67.39'	134.77'	N 80° 04' 02" E



SECTION 18, TOWN 3, RANGE 13
SECTION 12, TOWN 3, RANGE 13

C.C.C. & ST. LOUIS RAILROAD
VOL. 129, PG. 390
22,680 ACRES

TRACT Q
11.281 ACRES
OF WHICH 0.041 ACRE IS WITHIN
THE HIGHWAY RIGHT-OF-WAY

TRACT R
10.549 ACRES
OF WHICH 0.176 ACRE IS WITHIN
THE HIGHWAY RIGHT-OF-WAY

STEVEN L. MEADE
AND LORI M. MEADE
ORIG. 38.459 ACRE TRACT
O.R. 459, PG. 821, TRACT I

J. MALCOLM MEADE
AND NANCY L. MEADE
108.00 ACRES
VOL. 282, PG. 29

- LEGEND:
- 5/8 INCH IRON ROD SET
 - MAG NAIL SET
 - 5/8 INCH IRON ROD FOUND
 - ⊗ MAG NAIL FOUND
 - ⊗ RAILROAD SPIKE FOUND
 - ⊗ 5 INCH SQUARE CONCRETE POST FOUND
 - ⊗ 1-1/2 INCH IRON PIPE FOUND
 - ⊗ 1 INCH IRON PIPE FOUND

ARNOLD O. THOMPSON, JR.
7.71 ACRES
O.R. 176, PG. 788

TRACT A
0.813 ACRES
OF WHICH 0.041 ACRE IS WITHIN
THE HIGHWAY RIGHT-OF-WAY

TRACT E
1.024 ACRES
OF WHICH 0.041 ACRE IS WITHIN
THE HIGHWAY RIGHT-OF-WAY

TRACT F
1.098 ACRES
OF WHICH 0.041 ACRE IS WITHIN
THE HIGHWAY RIGHT-OF-WAY

TRACT G
1.182 ACRES
OF WHICH 0.103 ACRE IS WITHIN
THE HIGHWAY RIGHT-OF-WAY

TRACT H
1.277 ACRES
OF WHICH 0.103 ACRE IS WITHIN
THE HIGHWAY RIGHT-OF-WAY

TRACT J
1.382 ACRES
OF WHICH 0.103 ACRE IS WITHIN
THE HIGHWAY RIGHT-OF-WAY

TRACT K
1.477 ACRES
OF WHICH 0.103 ACRE IS WITHIN
THE HIGHWAY RIGHT-OF-WAY

TRACT L
1.572 ACRES
OF WHICH 0.103 ACRE IS WITHIN
THE HIGHWAY RIGHT-OF-WAY

TRACT M
1.667 ACRES
OF WHICH 0.103 ACRE IS WITHIN
THE HIGHWAY RIGHT-OF-WAY

TRACT N
1.762 ACRES
OF WHICH 0.103 ACRE IS WITHIN
THE HIGHWAY RIGHT-OF-WAY

TRACT O
1.857 ACRES
OF WHICH 0.103 ACRE IS WITHIN
THE HIGHWAY RIGHT-OF-WAY

TRACT P
1.952 ACRES
OF WHICH 0.103 ACRE IS WITHIN
THE HIGHWAY RIGHT-OF-WAY

TRACT Q
2.047 ACRES
OF WHICH 0.103 ACRE IS WITHIN
THE HIGHWAY RIGHT-OF-WAY

TRACT R
2.142 ACRES
OF WHICH 0.103 ACRE IS WITHIN
THE HIGHWAY RIGHT-OF-WAY

TRACT S
2.237 ACRES
OF WHICH 0.103 ACRE IS WITHIN
THE HIGHWAY RIGHT-OF-WAY

TRACT T
2.332 ACRES
OF WHICH 0.103 ACRE IS WITHIN
THE HIGHWAY RIGHT-OF-WAY

TRACT U
2.427 ACRES
OF WHICH 0.103 ACRE IS WITHIN
THE HIGHWAY RIGHT-OF-WAY

TRACT V
2.522 ACRES
OF WHICH 0.103 ACRE IS WITHIN
THE HIGHWAY RIGHT-OF-WAY

TRACT W
2.617 ACRES
OF WHICH 0.103 ACRE IS WITHIN
THE HIGHWAY RIGHT-OF-WAY

TRACT X
2.712 ACRES
OF WHICH 0.103 ACRE IS WITHIN
THE HIGHWAY RIGHT-OF-WAY

TRACT Y
2.807 ACRES
OF WHICH 0.103 ACRE IS WITHIN
THE HIGHWAY RIGHT-OF-WAY

TRACT Z
2.902 ACRES
OF WHICH 0.103 ACRE IS WITHIN
THE HIGHWAY RIGHT-OF-WAY

COUNTY HIGHWAY 63 (60' R/W)

COUNTY HIGHWAY 63 (50' R/W)

COUNTY HIGHWAY 64 (60' R/W)

SURVEY OF THIRTEEN (13) TRACTS OUT OF THE
STEVEN L. MEADE AND LORI M. MEADE
ORIGINAL 38.459 ACRE TRACT
OFFICIAL RECORD 459, PAGE 821, TRACT I
THE STEVEN L. MEADE AND LORI M. MEADE
6.777 ACRE TRACT
OFFICIAL RECORD 476, PAGE 419
AND THE STEVEN L. MEADE AND LORI M. MEADE
5.286 ACRE TRACT
OFFICIAL RECORD 476, PAGE 421
SECTION 12, TOWN 3, RANGE 13
MIAMI TOWNSHIP
LOGAN COUNTY, OHIO

SURVEYED BY:
JEFFREY L. LEE
PROFESSIONAL SURVEYOR 6359
OCTOBER 30, 2000
COPYRIGHT 2000 BY:
LEE SURVEYING & MAPPING CO., INC.
117 North Madriver Street
BELLEFONTAINE, OHIO 43311
(937) 593-7335
D-390 SMEAD632 SMEAD63.DAT L-3010-2

2 WORKING DAYS
BEFORE YOU DIG
CALL TOLL FREE 800-362-2764
OHIO UTILITIES PROTECTION SERVICE.

INDEXED ON MAP
4140 5P

MEADE TO MEANS DESCRIPTION
(October, 1967)

Being situated in Section 12, Town 3, Range 13, in Miami Township, Logan County, Ohio.

Beginning at a point where the west line of Section 12 intersects the center line of County Road #63.

Thence with the said west line of Section 12 $N 0^{\circ}-35'E$ 274.6 feet to a concrete post in the south right of way line of C.C.C. & St. L. Railroad. (Said right of way line is 180.0 feet from the center of the main track).

Thence with said south right of way line $S 80^{\circ}-45'E$ 139.0 feet to the P.T. of a curve whose radius calculates to be 7823.25 feet.

Thence continuing with said right of way line on said curve to the left in a northeasterly direction for 2047.0 feet to a concrete post.

Thence with a jog in the said right of way $N 24^{\circ}-15'W$ 55.0 feet to a concrete post.

Thence continuing with said right of way (said right of way from here on is 125.0 feet from the center of the main track) on said curve to the left in a northeasterly direction 380.3 feet to an iron in the west bank of Stony Creek.

Thence with said west bank of Stony Creek $S 19^{\circ}-38'E$ 994.3 feet to an iron.

Thence $N 81^{\circ}-41'W$ 200.0 feet to an iron.

Thence $S 43^{\circ}-42'W$ 138.8 feet to an iron.

Thence $S 17^{\circ}-24'W$ 184.3 feet to an iron in the center of County Road #63.

Thence with the center of County Road #63 $N 82^{\circ}-16'W$ 992.4 feet to an angle in the road.

Thence continuing with the center of County Road #63 $S 67^{\circ}-59'W$ 1413.5 feet to the place of beginning.

Containing 39.46 acres more or less.

Surveyed from a 111.49 acre tract.

NOTE: GOES AROUND THE 2.28 ACRE TRACT

Owen K. Shirk
Surveyor 4271

INDEXED ON MAP

4148

40

BEADE TO WEISKITTLE DESCRIPTION
(October, 1967)

Being situated in Section 12, Town 3, Range 13, in Miami Township, Logan County, Ohio.

Beginning at an iron at the intersection of County Road #63 and County Road #64 (see County Engineer's Field Book #587, p.43)-

Thence with the center of County Road #63 N82°-16'W 389.7 feet to an iron.

Thence N17°-27'E 184.3 feet to an iron.

Thence N43°-42'E 138.8 feet to an iron.

Thence S81°-41'E 200.0 feet to an iron in the west bank of Stony Creek.

Thence with the west bank of Stony Creek S19°-08'E 233.3 feet to the center of County Road #63.

Thence with the center of County Road #63 S26°-17'W 88.5 feet to the place of beginning.

Containing 2.28 acres more or less.

Surveyed from a 111.49 acre tract.

Owen K. Shirk
Surveyor 4271

INDEXED ON MAP

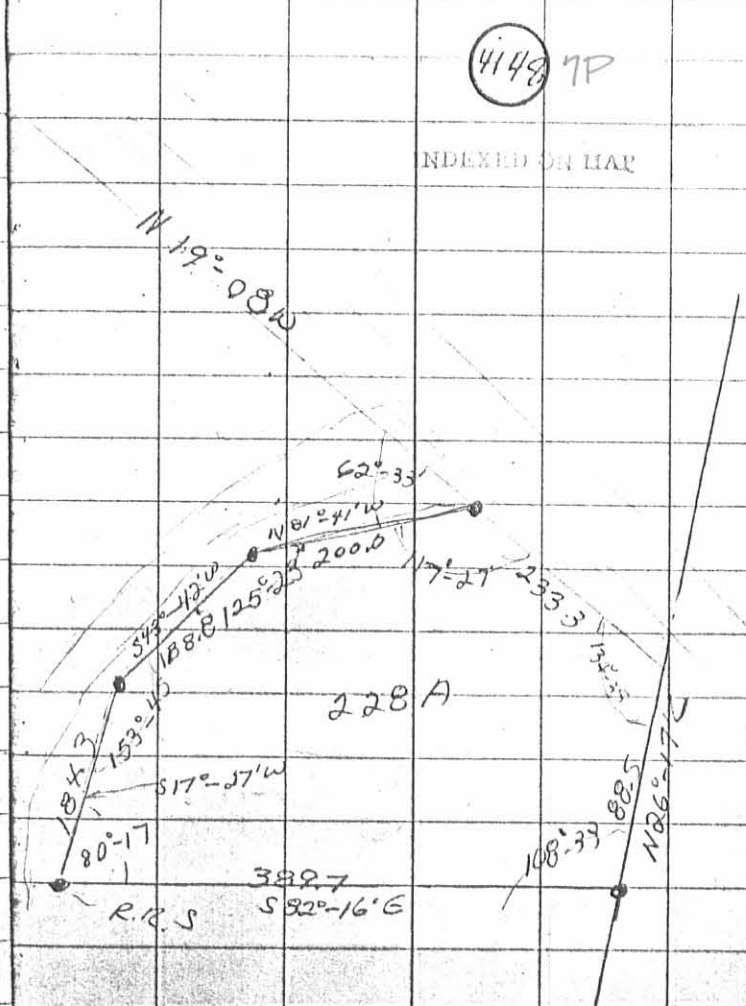
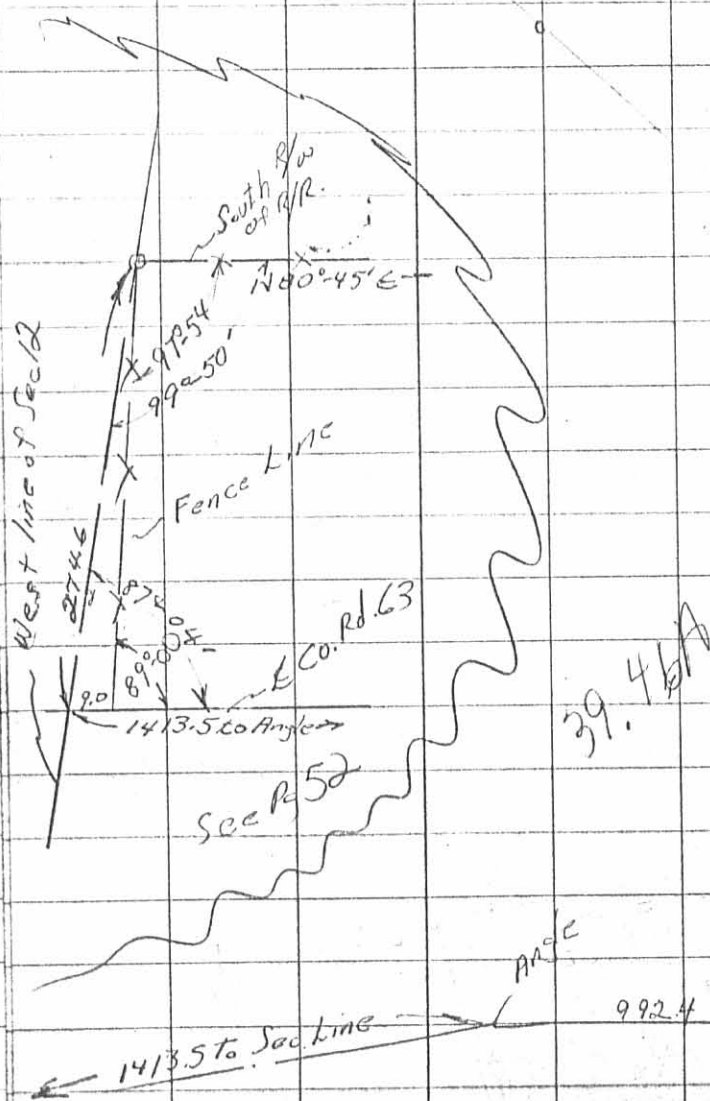
4148

TD

O.K. S. F. B. 10

Oct 14, 1967

53





3-28-13

Lee Surveying and Mapping Co., Inc.

Land Surveys • Topography • Subdivisions • Construction Layout

117 N. Madriver St.
Bellefontaine OH 43311



Phone: (937)593-7335
Fax: (937) 593-7444

PROFESSIONAL SURVEYOR'S AFFIDAVIT

William K. Bruce, being first duly sworn, deposes and says that he is a Registered Professional Surveyor under the laws of the State of Ohio, being Professional Surveyor No. 7437 and that he is making this affidavit for the purposes of correcting the description to certain real estate situated in Miami Township, Logan County, Ohio, presently owned by Steven L. Meade and Lori M. Meade by virtue of a General Warranty Deed recorded in Official Record Volume 849, Page 690 of the Logan County Records of Deeds.

The corrected description being as follows with corrections **underlined**:

Lying in Section 12, Town 3, Range 13, Village of DeGraff and Miami Township, Logan County, Ohio.

Being out of the J. Malcolm Meade Original 108.16 acre tract as deeded and described in Volume 282, Page 29, Tracts I & II of the Logan County Records of Deeds and being more particularly described as follows:

Beginning at a 3/4 inch iron bar found at an angle in the centerline of Mill Street (Township Road 256 at Station 17+00, Logan County Engineer's Field Book 490, Pages 75-78) and a west corporation line of the Village of DeGraff.

THENCE, with the center-line of Mill Street (60 feet wide), N 05°-59'-46"E, a distance of 98.51 feet to a railroad spike set at the TRUE POINT OF BEGINNING.

THENCE, S 64°-27'-06"W, a distance of 2000.38 feet to a 5/8 inch iron rod set, passing a 5/8 inch iron rod set at 35.20 feet.

THENCE, N 74°-51'-39"W, a distance of 338.34 feet to a 5/8 inch iron rod set.

THENCE, with the south lines of the Dale Wade 58.579 acre tract (O.R. 104, Pg. 934) the following **three** courses:

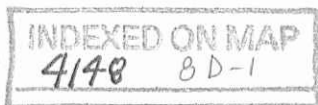
N 49°-44'-34"E, a distance of 222.59 feet to a 5/8 inch iron rod set.

With a curve to the right having a central angle of 14°-42'-19", a radius of 1996.42 feet, arc length of 512.39 feet, a tangent of 257.61 feet, a chord bearing N 57°-05'-56"E, a distance of 510.99 feet to a 5/8 inch iron rod set.

N 64°-27'-06"E, a distance of 1711.58 feet to mine spike found, passing a 5/8 inch iron rod set at 1680.68 feet.

MEMBER: AMERICAN CONGRESS ON SURVEYING & MAPPING (ACSM) • NATIONAL SOCIETY OF PROFESSIONAL SURVEYORS (NSPS) PROFESSIONAL LAND SURVEYORS OF OHIO (PLSO)

54830213.AFF.doc



Lee Surveying and Mapping Co., Inc.

Land Surveys • Topography • Subdivisions • Construction Layout

117 N. Madriver St.
Bellefontaine OH 43311



Phone: (937)593-7335
Fax: (937) 593-7444

THENCE, with the centerline of Mill Street the following two courses:

S 39°-26'-30"E, a distance of 40.09 feet to a 5/8 inch iron rod set.

S 05°-59'-46"W, a distance of 356.21 feet to the point of beginning.

Containing 17.192 acres of which 0.601 acre is in the Village of DeGraff with 0.273 acre in the right of way of Mill Street.

The Basis for bearings is based upon the south line of the aforementioned 58.579 acre tract being N 64°-27'-06"E, and all other bearings are from angles and distanced measured in a field survey by Lee Surveying and Mapping Company on September 5, 1995.

This affidavit is made in compliance with Revised Code of Ohio Sec. 5301.252 and particularly to show an affidavit of a professional surveyor to reconcile conflicts and ambiguities in descriptions of land in recorded instruments as stated in paragraph B(5) of Section 5301.252. Under Sec. 5301.252(C) the County Recorder shall receive and cause such affidavit to be recorded as deeds are recorded.

SIGNED AND ACKNOWLEDGED IN THE PRESENCE OF:

Katharine S. Stanford
KATHARINE S. STANFORD

Alan Westcott
ALAN WESTCOTT

STATE OF OHIO,
LOGAN COUNTY, SS:



ORIGINAL STAMP IN GREEN

William K. Bruce
William K. Bruce
Professional Surveyor No. 7437

BE IT REMEMBERED, that on this 28th day of MARCH, 2013, before me, the subscriber, a Notary Public in and for said County and State, personally came the above named William K. Bruce the maker of the foregoing Affidavit, and acknowledged the

Lee Surveying and Mapping Co., Inc.

Land Surveys • Topography • Subdivisions • Construction Layout

117 N. Madriver St.
Bellefontaine OH 43311



Phone: (937)593-7335
Fax: (937) 593-7444

signing of the same to be his voluntary act and deed, for the uses and purposes therein mentioned.

IN TESTIMONY WHEREOF, I have hereunto subscribed my name and affixed my official seal, on the day and year last aforesaid.

Katharine S. Stanford
Notary Public,



KATHARINE S. STANFORD
NOTARY PUBLIC
STATE OF OHIO
Comm. Expires
June 06, 2015

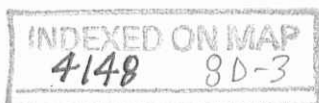
RECORDER:

Please cross reference to Official Record Volume 849, Page 690 in the Abstract of the Deed Records of Logan County, Ohio.

This instrument was prepared by William K. Bruce.

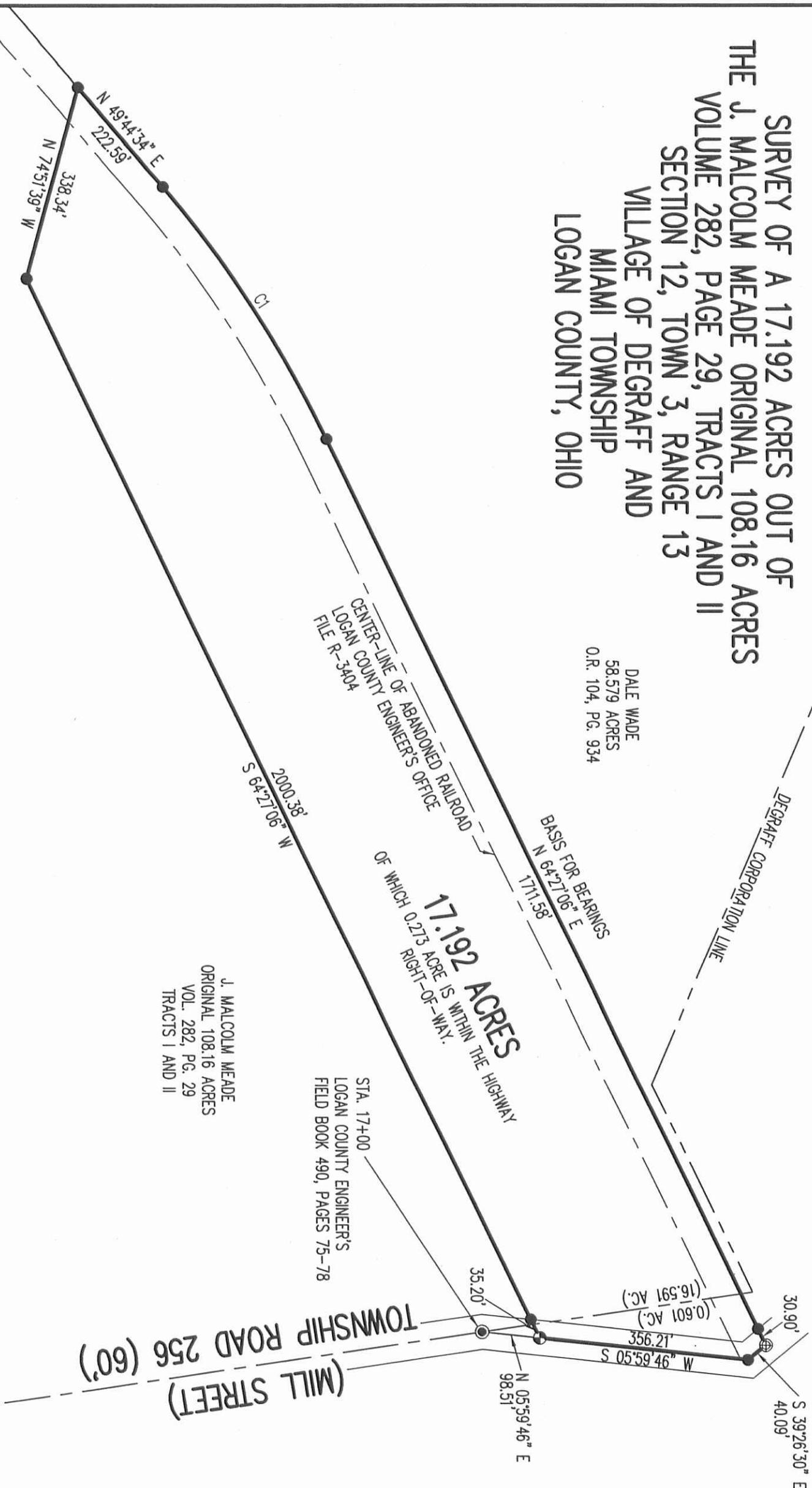
MEMBER: AMERICAN CONGRESS ON SURVEYING & MAPPING (ACSM) • NATIONAL SOCIETY OF PROFESSIONAL SURVEYORS (NSPS) PROFESSIONAL LAND SURVEYORS OF OHIO (PLSO)

54830213.AFF.doc

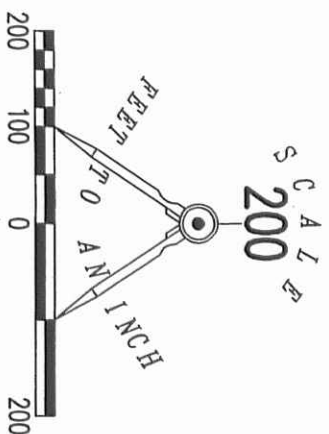


**SURVEY OF A 17.192 ACRES OUT OF
THE J. MALCOLM MEADE ORIGINAL 108.16 ACRES
VOLUME 282, PAGE 29, TRACTS I AND II
SECTION 12, TOWN 3, RANGE 13
VILLAGE OF DEGRAFF AND
MIAMI TOWNSHIP
LOGAN COUNTY, OHIO**

DATE MADE
58,579 ACRES
O.R. 104, PG. 934



CURVE	DELTA ANGLE	RADIUS	ARC LENGTH	TANGENT	CHORD BEARING	CHORD LENGTH
C1	14°42'19"	1996.42'	512.39'	257.61'	N 57°05'56" E	510.99'



LEGEND

- 5/8 INCH IRON ROD SET WITH PLASTIC I.D. CAP STAMPED "LSM7437"
- ⊕ MINE SPIKE FOUND
- ⊖ RAILROAD SPIKE SET
- ⊙ 3/4 INCH IRON ROD FOUND

SURVEYED BY:

William K. Bruce
WILLIAM K. BRUCE
PROFESSIONAL SURVEYOR 7437
SEPTEMBER 5, 1995
REVISED MARCH 22, 2013

COPYRIGHT 2013 BY:
LEE SURVEYING & MAPPING CO., INC.
117 North Modriver Street
BELLEFONTAINE, OHIO 43311
(937) 593-7335
www.lsminc.us
surveys@lsminc.us

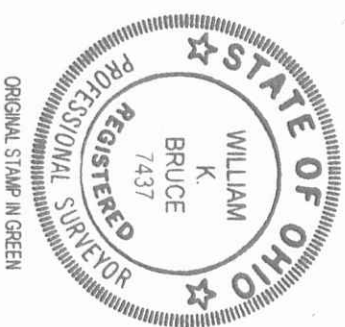
ADW D0213 54830213-R-1 L-5483-3

2 WORKING DAYS
BEFORE YOU DIG

INDEXED ON MAP
4148
8P

CALL TOLL FREE 800-362-2764

OHIO UTILITIES PROTECTION SERVICE





APPROVED

3-28-13

Lee Surveying and Mapping Co., Inc.

Land Surveys • Topography • Subdivisions • Construction Layout

117 N. Madriver St.
Bellefontaine OH 43311



Phone: (937) 593-7335
Fax: (937) 593-7444
surveys@lsmcinc.us

MEADE 79.696 ACRES

Lying in Section 12, Town 3, Range 13, Miami Township, Village of Degraff, Logan County, Ohio.

Being part of the remainder of J. Malcolm Meade original 120 acre tract and all of the remainder of the original 10.16 acre tract as deeded and described in Official Record 602, Page 775, Tracts I and II of the Logan County Records of Deeds and being more particularly described as follows:

Beginning at a 3/4 inch iron bar found on the center-line of Township Road 256 (Mill Street) (60 feet wide) at Station 17+00, per Logan County Engineer's Field book 490, Pages 75-78.

THENCE, with the center-line of Township Road 256, S 08°-28'-22"E, a distance of 822.38 feet to a MAG nail set.

THENCE with the north right-of-way of the C. C. C. & St. Louis Railroad the following six courses:

With a curve to the right having a central angle of 9°-26'-58", a radius of 7568.25 feet, an arc length of 1248.17 feet, a tangent of 625.50 feet, a chord bearing S 59°-35'-00"W, a distance of 1246.76 feet to a 5 inch concrete post found, passing a 5/8 inch iron rod set at 33.53 feet along the arc length.

N 26°-42'-22"W, a distance of 50.01 feet to a 5 inch concrete post found.

With a curve to the right having a central angle of 8°-09'-49", a radius of 7518.25 feet, an arc length of 1071.20 feet, a tangent of 536.51 feet, a chord bearing S 68°-23'-47"W, a distance of 1070.29 feet to a 5 inch concrete post found.

S 17°-31'-18"E, a distance of 75.00 feet to a 5 inch concrete post found.

With a curve to the right having a central angle of 12°-42'-19", radius of 7593.25 feet, an arc length of 1683.78 feet, a tangent of 845.36 feet, a chord bearing S 78°-49'-51"W, a distance of 1680.33 feet to a 5/8 inch iron rod set.

S 85°-11'-00"W, a distance of 102.34 feet to a 5/8 inch iron rod set.

THENCE, with the west line of Section 12, N 04°-29'-43"E, a distance of 392.38 feet to a 5/8 inch iron rod found.

THENCE, with the south bank of the Great Miami River the following two courses:

N 74°-14'-24"E, a distance of 103.78 feet to a 5/8 inch iron rod set.

N 68°-42'-49"E, a distance of 171.78 feet to a 5/8 inch iron rod set.

THENCE, with the south line of the Jack L. Harshbarger and Dorianne Harshbarger 58.579 acre tract (O.R. 428, Pg. 667) the following two courses:

With a curve to the left having a central angle of 18°-30'-32", a radius of 1191.92 feet an arc length of 385.04 feet, a tangent of 194.21 feet, a chord bearing N 55°-19'-35"E, a distance of 383.37 feet to a 5/8 inch iron rod set.

N 49°-44'-33"E, a distance of 1274.21 feet to a 5/8 inch iron rod set.

INDEXED ON MAP
4148 90-1

Lee Surveying and Mapping Co., Inc.

Land Surveys • Topography • Subdivisions • Construction Layout

117 N. Madriver St.
Bellefontaine OH 43311



Phone: (937) 593-7335
Fax: (937) 593-7444
surveys@lsminc.us

THENCE, with the lines of the Steven L. Meade and Lori M. Meade 17.013 acre tract (O.R. 849, Pg. 690) the following two courses:

S 74°-51'-39"E, a distance of 338.34 feet to a 5/8 inch iron rod found.

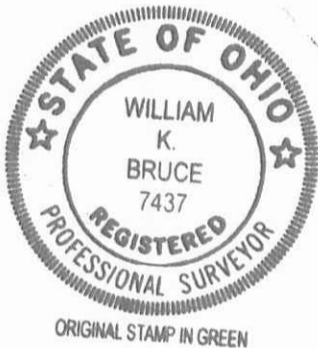
N 64°-27'-06"E, a distance of 2000.38 feet to a railroad spike found, passing a 5/8 inch iron rod found at 1965.18 feet.

THENCE, with the center-line of Township Road 256, S 05°-59'-46"W, a distance of 98.51 feet to the point of beginning.

Containing 79.696 acres of which 0.636 acre is within the highway right-of-way. 0.025 acre is within the Village of DeGraff.

Property is subject to any and all previous easements and rights-of-way of record.

The basis for bearings is the center-line of Township Road 256, being N 08°-28'-22"W, and all other bearings are from angles and distances measured in a field survey by Lee Surveying and Mapping Co., Inc. on March 22, 2013.

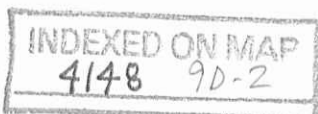


Description prepared by:

William K. Bruce

William K. Bruce
Professional Surveyor 7437
March 22, 2013

L-5483





APPROVED

3-28-13

Lee Surveying and Mapping Co., Inc.

Land Surveys • Topography • Subdivisions • Construction Layout

117 N. Madriver St.
Bellefontaine OH 43311



Phone: (937) 593-7335
Fax: (937) 593-7444
surveys@lsminc.us

MEADE 28.319 ACRES

Lying in Section 12, Town 3, Range 13, Miami Township, Logan County, Ohio.

Being part of the remainder of J. Malcolm Meade original 120 acre tract as deeded and described in Official Record 602, Page 775, Tract I of the Logan County Records of Deeds and being more particularly described as follows:

Beginning at a MAG nail set at the intersection of center-lines of Township Road 256 (60 feet wide) and County Highway 63 (60 feet wide).

THENCE, with the center-line of County Highway 63, S 48°-16'-05"W, a distance of 1162.21 feet to a MAG nail set.

THENCE, with the old center-line of County Highway 63 (Logan County Engineer's Field Book 587, Page 43), S 30°-54'-54"W, a distance of 693.72 feet to a MAG nail set.

THENCE, N 77°-38'-08"W, a distance of 8.44 feet to a MAG nail set.

THENCE, with the center-line of County Highway 63, N 30°-54'-54"E, a distance of 88.56 feet to a MAG nail set.

THENCE, with the east line of the William L. Weiskittle and Suzanne Weiskittle 2.28 acre tract (O.R. 31, Pg. 327) and the east line of the Gregory K. Meade and Rebecca S. Meade 21.830 acre tract (O.R. 846, Pg. 308, Parcel II, Tract I), N 14°-30'-27"W, a distance of 1226.75 feet to a point on the south right-of-way of the C. C. C. & St. Louis Railroad, passing a MAG nail set at 42.12 feet, referenced by a 5/8 inch iron rod found, on the said south right-of-way, that bears S 67°-21'-58"W a distance of 7.57 feet.

THENCE, with the south right-of-way of the C. C. C. & St. Louis Railroad the following five courses:

With a curve to the left having a central angle of 3°-01'-58", a radius of 7768.25 feet, an arc length of 411.17 feet, a tangent of 205.63 feet, a chord bearing N 65°-49'-19"E, a distance of 411.13 feet to a 5/8 inch iron rod set.

N 25°-30'-17"W, a distance of 50.00 feet to a 5/8 inch iron rod set.

With a curve to the left having a central angle of 2°-36'-31", a radius of 7718.25 feet, an arc length of 351.42 feet, a tangent of 175.74, a chord bearing N 63°-00'-00"E, a distance of 351.39 feet to a 5 inch concrete post found.

S 29°-13'-00"E, a distance of 100.01 feet to a 5 inch concrete post found.

With a curve to the left having a central angle of 5°-54'-32", a radius 7818.25 feet, an arc length of 806.29 feet, a tangent of 403.50 feet, a chord bearing N 58°-43'-47"E, a distance of 805.94 feet to a MAG nail set, passing a 5/8 inch iron rod set 773.02 feet, along the arc length.

INDEXED ON MAP
4148 90-3

Lee Surveying and Mapping Co., Inc.

Land Surveys • Topography • Subdivisions • Construction Layout

117 N. Madriver St.
Bellefontaine OH 43311



Phone: (937) 593-7335
Fax: (937) 593-7444
surveys@lsminc.us

THENCE, with the center-line of Township Road 256, S 08°-28'-22"E, a distance of 607.36 feet to the point of beginning.

Containing 28.319 acres of which 1.740 acre is within the highway right-of-way.

Property is subject to any and all previous easements and rights-of-way of record.

The basis for bearings is the center-line of Township Road 256, being N 08°-28'-22"W, and all other bearings are from angles and distances measured in a field survey by Lee Surveying and Mapping Co., Inc. on March 22, 2013.



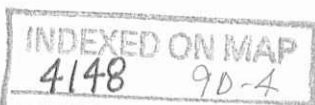
ORIGINAL STAMP IN GREEN

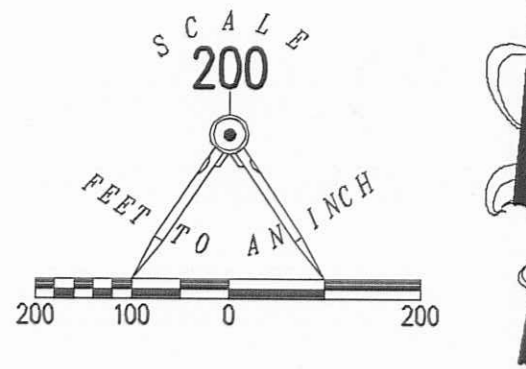
Description prepared by:

William K. Bruce

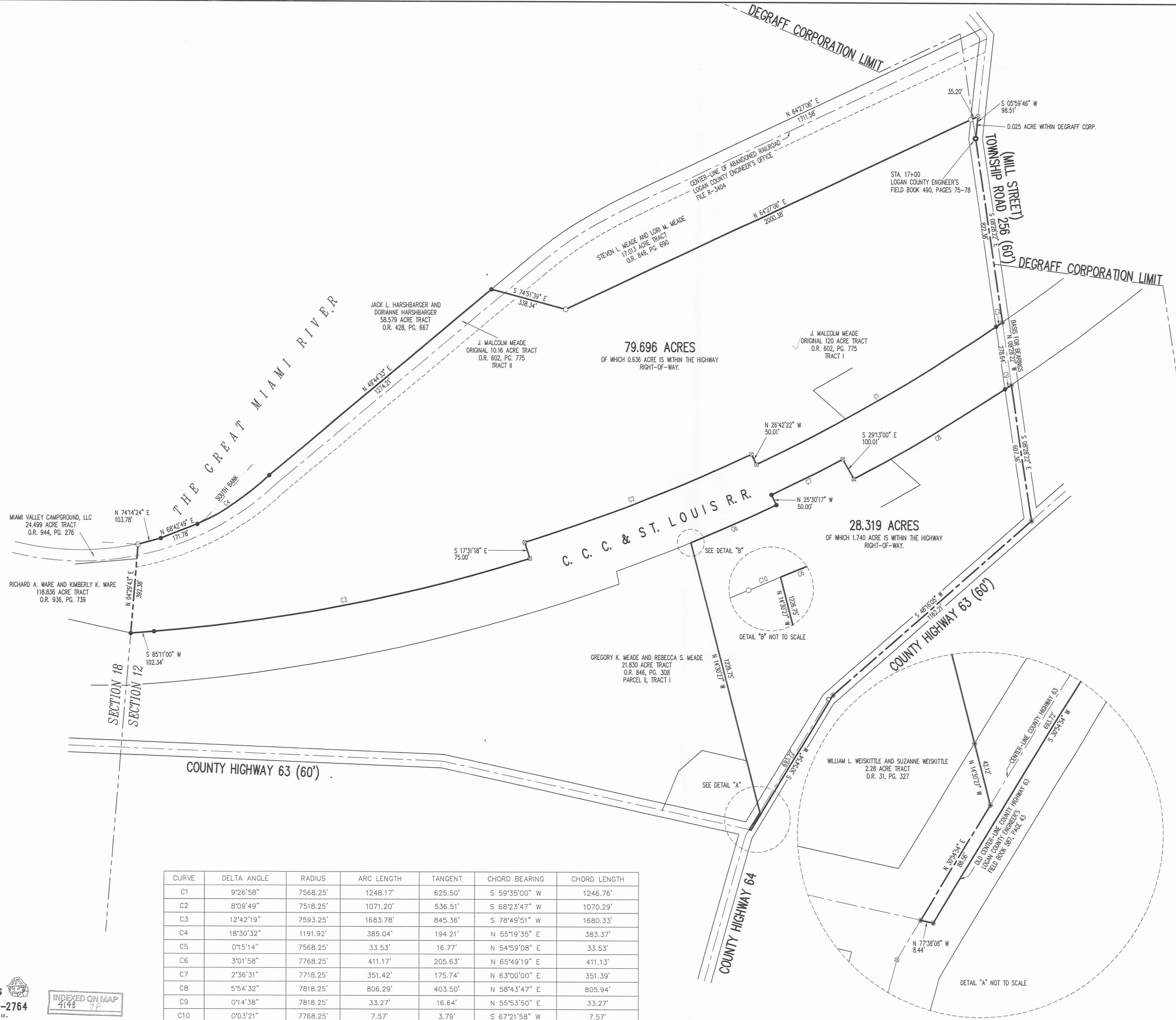
William K. Bruce
Professional Surveyor 7437
March 22, 2013

L-5483



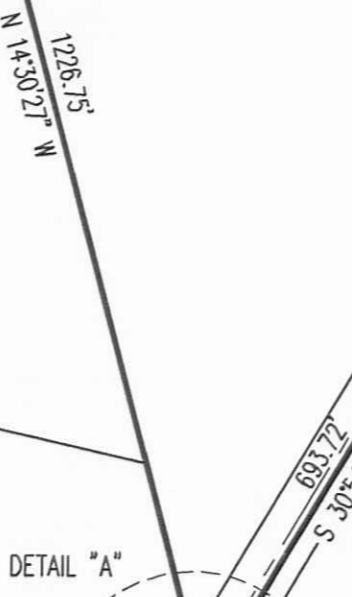
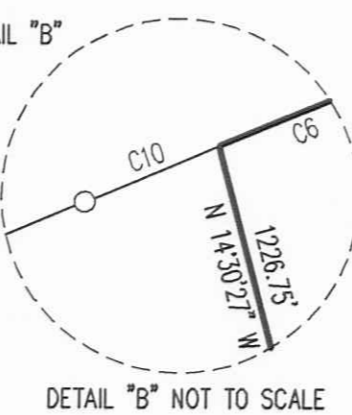


- LEGEND
- 5/8 INCH IRON ROD SET WITH PLASTIC I.D. CAP STAMPED "LSM7437"
 - 5/8 INCH IRON ROD FOUND
 - MAG NAIL SET
 - ⊗ RAILROAD SPIKE FOUND
 - 3/4 INCH IRON BAR FOUND
 - 1 INCH IRON BAR FOUND
 - ⊗ 5 INCH CONCRETE POST FOUND



79.696 ACRES
OF WHICH 0.636 ACRE IS WITHIN THE HIGHWAY RIGHT-OF-WAY.

28.319 ACRES
OF WHICH 1.740 ACRE IS WITHIN THE HIGHWAY RIGHT-OF-WAY.



CURVE	DELTA ANGLE	RADIUS	ARC LENGTH	TANGENT	CHORD BEARING	CHORD LENGTH
C1	9°26'58"	7568.25'	1248.17'	625.50'	S 59°35'00" W	1246.76'
C2	8°09'49"	7518.25'	1071.20'	536.51'	S 68°23'47" W	1070.29'
C3	12°42'19"	7593.25'	1683.78'	845.36'	S 78°49'51" W	1680.33'
C4	18°30'32"	1191.92'	385.04'	194.21'	N 55°19'35" E	383.37'
C5	0°15'14"	7568.25'	33.53'	16.77'	N 54°59'08" E	33.53'
C6	3°01'58"	7768.25'	411.17'	205.63'	N 65°49'19" E	411.13'
C7	2°36'31"	7718.25'	351.42'	175.74'	N 63°00'00" E	351.39'
C8	5°54'32"	7818.25'	806.29'	403.50'	N 58°43'47" E	805.94'
C9	0°14'38"	7818.25'	33.27'	16.64'	N 55°53'50" E	33.27'
C10	0°03'21"	7768.25'	7.57'	3.79'	S 67°21'58" W	7.57'

A SURVEY OF A
79.696 ACRE AND 28.319 ACRE TRACTS OUT OF
THE REMAINDER OF THE J. MALCOLM MEADE
ORIGINAL 120 ACRE AND ORIGINAL 10.16 ACRE TRACTS
OFFICIAL RECORD 602, PAGE 775
TRACTS I AND II
SECTION 12, TOWN 3, RANGE 13
VILLAGE OF DEGRAFF
MIAMI TOWNSHIP
LOGAN COUNTY, OHIO

SURVEYED BY:

William K. Bruce
WILLIAM K. BRUCE
PROFESSIONAL SURVEYOR 7437
MARCH 22, 2013



COPYRIGHT 2013 BY:
LEE SURVEYING & MAPPING CO., INC.
117 North Madison Street
Bellefontaine, Ohio 43111
(937) 593-7335
WWW.LSMINC.US
surveys@lsminc.us
ADW 00213 54630213 L-5483-1

2 WORKING DAYS
BEFORE YOU DIG
CALL TOLL FREE 800-362-2764
OHIO UTILITIES PROTECTION SERVICE.

INDEXED ON MAP
4146