

REC'D 9-10-00 SMLY UKV

Lee Surveying and Mapping Co., Inc.

Land Surveys • Topography • Subdivisions • Construction Layout

117 N. Madriver St.
Bellefontaine OH 43311



Phone: (937) 593-7335
Fax: (937) 593-7444

MEADE 8.119 ACRES

Lying in Section 24, Town 1, Range 8, Miami Township, Logan County, Ohio.

Being out of the Steve L. Meade and Lori M. Meade original 89.71 acre tract as deeded and described in Official Record 366, Page 632, Tract I of the Logan County Records of Deeds and being more particularly described as follows:

Beginning at a MAG nail found on the west line of Section 24 at the intersection of the center-lines of Ohio Route 235 and Township Road 75 on Ohio Route 235 P.I. Station 233 + 23.98.

THENCE, with the center-line of Ohio Route 235 (60 feet wide), S 86°-13'-04" E, a distance of 1240.36 feet to a MAG nail found at the TRUE POINT OF BEGINNING.

THENCE, with the center-line of Ohio Route 235, S 86°-13'-04" E, a distance of 714.86 feet to a MAG nail found.

THENCE, with the west line of the Sterling Trust Company Trustee FBO Robert R. Moody, Sr. 21.75 acre tract (O.R. 340, Pg. 291), S 1°-08'-26" E, a distance of 484.18 feet to a 5/8 inch iron rod found, passing a 5/8 inch iron rod found at 30.00 feet.

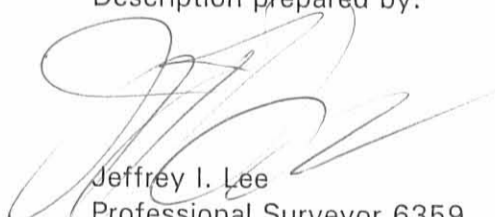
THENCE, with the north line of the Daniel B. Goings 6.500 acre tract (O.R. 378, Pg. 842), N 86°-12'-28" W, a distance of 751.56 feet to a 5/8 inch iron rod found.

THENCE, with the east line of the said 6.500 acre tract, N 3°-12'-23" E, a distance of 482.29 feet to the point of beginning, passing a 5/8 inch iron rod found at 452.29 feet,

Containing 8.119 acres of which 0.493 acre is within the highway right-of-way.

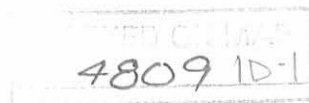
The basis for bearings is the west line of Section 24, being N 1°-11'-41" W, and all other bearings are from angles and distances measured in a field survey by Lee Surveying and Mapping Co., Inc. on August 7, 2000.

Description prepared by:


Jeffrey I. Lee
Professional Surveyor 6359
August 7, 2000



L-2662



REC'D 9-6-00 STM OK ✓

Lee Surveying and Mapping Co., Inc.

Land Surveys • Topography • Subdivisions • Construction Layout

117 N. Madriver St.
Bellefontaine OH 43311



Phone: (937) 593-7335
Fax: (937) 593-7444

MEADE 67.882 ACRES

Lying in Section 24, Town 1, Range 8, Miami Township, Logan County, Ohio.

Being out of the Steve L. Meade and Lori M. Meade original 89.71 acre and 81.91 acre tracts as deeded and described in Official Record 366, Page 632, Tracts I and III of the Logan County Records of Deeds and being more particularly described as follows:

Beginning at a MAG nail found on the west line of Section 24 at the intersection of the center-lines of Ohio Route 235 and Township Road 75 on Ohio Route 235 P.I. Station 233 + 23.98.

THENCE, with the center-line of Ohio Route 235 (60 feet wide), S 86°-13'-04" E, a distance of 335.00 feet to a MAG nail set at the TRUE POINT OF BEGINNING.

THENCE, with the center-line of Ohio Route 235, S 86°-13'-04" E, a distance of 533.71 feet to a MAG nail found.

THENCE, with the west line of the Daniel B. Goings 0.538 acre tract (O.R. 413, Pg. 339), S 0°-54'-09" E, a distance of 188.00 feet to a 5/8 inch iron rod found, passing a 5/8 inch iron rod found at 30.10 feet.

THENCE, with the south line of the said 0.538 acre tract, S 86°-13'-04" E, a distance of 125.00 feet to a 5/8 inch iron rod found.

THENCE, with the west line of the Daniel B. Goings 6.500 acre tract (O.R. 378, Pg. 842), S 0°-54'-09" E, a distance of 475.46 feet to a 5/8 inch iron rod found.

THENCE, with the south line of the said 6.500 acre tract, S 86°-12'-28" E, a distance of 964.29 feet to a 5/8 inch iron rod found.

THENCE, with a west line of the Sterling Trust Company Trustee FBO Robert R. Moody, Sr. 21.75 acre tract (O.R. 340, Pg. 291), S 1°-08'-26" E, a distance of 1854.43 feet to a 5/8 inch iron rod set.

THENCE, N 87°-11'-26" W, a distance of 957.87 feet to a 5/8 inch iron rod set.

THENCE, N 3°-57'-32" W, a distance of 638.57 feet to a 5/8 inch iron rod set, passing a 5/8 inch iron rod set at 481.13 feet.

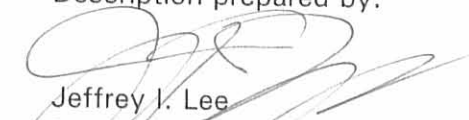
THENCE, N 86°-07'-49" W, a distance of 599.75 feet to a 5/8 inch iron rod set.

THENCE, N 2°-02'-18" W, a distance of 1901.40 feet to the point of beginning, passing a 5/8 inch iron rod set at 1868.04 feet.

Containing 67.882 acres of which 0.367 acre is within the highway right-of-way.

The basis for bearings is the west line of Section 24, being N 1°-11'-41" W, and all other bearings are from angles and distances measured in a field survey by Lee Surveying and Mapping Co., Inc. on August 7, 2000.

Description prepared by:


Jeffrey J. Lee
Professional Surveyor 6359
August 7, 2000



INDEXED ON MAP
4809 1D-2

REC'D 9-10-00 S.M.J. OK ✓

Lee Surveying and Mapping Co., Inc.

Land Surveys • Topography • Subdivisions • Construction Layout

117 N. Madriver St.
Bellefontaine OH 43311



Phone: (937) 593-7335
Fax: (937) 593-7444

MEADE 68.387 ACRES

Lying in Sections 24 and 25, Town 1, Range 8, Miami Township, Logan County, Ohio.

Being out of the Steve L. Meade and Lori M. Meade original 89.71 acre and 81.91 acre tracts as deeded and described in Official Record 366, Page 632, Tracts I and III of the Logan County Records of Deeds and being more particularly described as follows:

Beginning at a MAG nail found on the west line of Section 24 at the intersection of the center-lines of Ohio Route 235 and Township Road 75 on Ohio Route 235 P.I. Station 233 + 23.98.

THENCE, with the center-line of Ohio Route 235 (60 feet wide), S 86°-13'-04" E, a distance of 335.00 feet to a MAG nail set.

THENCE, S 2°-02'-18" E, a distance of 1901.40 feet to a 5/8 inch iron rod set, passing a 5/8 inch iron rod set at 33.36 feet.

THENCE, S 86°-07'-49" E, a distance of 599.75 feet to a 5/8 inch iron rod set.

THENCE, S 3°-57'-32" E, a distance of 638.57 feet to a 5/8 inch iron rod set, passing a 5/8 inch iron rod set at 157.44 feet.

THENCE, S 87°-11'-26" E, a distance of 957.87 feet to a 5/8 inch iron rod set.

THENCE, with a west line of the Sterling Trust Company Trustee FBO Robert R. Moody, Sr. 21.75 acre tract (O.R. 340, Pg. 291), S 1°-08'-26" E, a distance of 1040.45 feet to a 3/4 inch iron rod set.

THENCE, with the north line of the said 21.75 acre tract, N 77°-21'-56" W, a distance of 2002.52 feet to a 3/4 inch iron rod found.

THENCE, with the west line of Section 24 and the east lines of the Elizabeth Ann Cook, as Trustee of the Elizabeth Ann Cook Trust original 120.75 acre tract (O.R. 370, Pg. 215, Tract II), the Paul R. Overholser original 20.00 acre tract (O.R. 58, Pg. 521) and the Nathan L. Kerns 1.022 acre tract (O.R. 359, Pg. 514), N 1°-11'-41" W, a distance of 3249.71 feet to the point of beginning, passing a 15 inch concrete post found at 3209.55 feet.

Containing 68.387 acres of which 0.239 acre is within the highway right-of-way, 65.948 acres are in Section 24 and 2.439 acres are in Section 25.

The basis for bearings is the west line of Section 24, being N 1°-11'-41" W, and all other bearings are from angles and distances measured in a field survey by Lee Surveying and Mapping Co., Inc. on August 7, 2000.

Description prepared by:

Jeffrey I. Lee
Professional Surveyor 6359
August 7, 2000



ORIGINAL STAMP IN GREEN

INDEXED ON MAP
4809 1D3

REV'D 9-10-00 SMJ OK ✓

Lee Surveying and Mapping Co., Inc.

Land Surveys • Topography • Subdivisions • Construction Layout

117 N. Madriver St.
Bellefontaine OH 43311



Phone: (937) 593-7335
Fax: (937) 593-7444

MEADE

20 FEET WIDE ACCESS AND VEGETATIVE GROWTH MANAGEMENT EASEMENT

Lying in Section 24, Town 1, Range 8, Miami Township, Logan County, Ohio.

Being through the Steve L. Meade and Lori M. Meade original 89.71 acre and 81.91 acre tracts as deeded and described in Official Record 366, Page 632, Tracts I and III of the Logan County Records of Deeds and being more particularly described as follows:

Being a 20 feet wide easement lying west and south of the following described lines.

Beginning at a MAG nail found on the west line of Section 24 at the intersection of the center-lines of Ohio Route 235 and Township Road 75 on Ohio Route 235 P.I. Station 233 + 23.98.

THENCE, with the center-line of Ohio Route 235 (60 feet wide), S 86°-13'-04" E, a distance of 335.00 feet to a MAG nail set at the TRUE POINT OF BEGINNING.

THENCE, with the east side of the easement, S 2°-02'-18" E, a distance of 1901.40 feet to a 5/8 inch iron rod set.

THENCE, with the north side of the easement, S 86°-07'-49" E, a distance of 599.75 feet to a 5/8 inch iron rod set.

THENCE, with the east side of the easement, S 3°-57'-32" E, a distance of 638.57 feet to a 5/8 inch iron rod set, passing a 5/8 inch iron rod set at 157.44 feet.

THENCE, with the north side of the easement, S 87°-11'-26" E, a distance of 957.87 feet to a 5/8 inch iron rod set at the terminus of this easement.

The basis for bearings is the west line of Section 24, being N 1°-11'-41" W, and all other bearings are from angles and distances measured in a field survey by Lee Surveying and Mapping Co., Inc. on August 7, 2000.

Description prepared by:

A handwritten signature in black ink, appearing to read 'Jeffrey I. Lee', is written over the typed name.

Jeffrey I. Lee
Professional Surveyor 6359
August 7, 2000



ORIGINAL STAMP IN GREEN

INDEXED ON MAP
4809 1D-4

REC'D 9-6-00 SUG OK ✓

Lee Surveying and Mapping Co., Inc.

Land Surveys • Topography • Subdivisions • Construction Layout

117 N. Madriver St.
Bellefontaine OH 43311



Phone: (937) 593-7335
Fax: (937) 593-7444

MEADE DRAINAGE TILE EASEMENT

Lying in Section 24, Town 1, Range 8, Miami Township, Logan County, Ohio.

Being through the Steve L. Meade and Lori M. Meade original 81.91 acre tract as deeded and described in Official Record 366, Page 632, Tract III of the Logan County Records of Deeds and being more particularly described as follows:

Beginning at a MAG nail found on the west line of Section 24 at the intersection of the center-lines of Ohio Route 235 and Township Road 75 on Ohio Route 235 P.I. Station 233 + 23.98.

THENCE, with the center-line of Ohio Route 235 (60 feet wide), S 86°-13'-04" E, a distance of 335.00 feet to a MAG nail set.

THENCE, S 2°-02'-18" E, a distance of 1901.40 feet to a 5/8 inch iron rod set.

THENCE, S 86°-07'-49" E, a distance of 599.75 feet to a 5/8 inch iron rod set.

THENCE, S 3°-57'-32" E, a distance of 130.00 feet to a point at the TRUE POINT OF BEGINNING.

THENCE, S 3°-57'-32" E, a distance of 95.00 feet to a point.

THENCE, S 86°-02'-28" W, a distance of 60.00 feet to a point.

THENCE, N 3°-57'-32" W, a distance of 95.00 feet to a point.

THENCE, N 86°-02'-28" E, a distance of 60.00 feet to a the point of beginning.

The basis for bearings is the west line of Section 24, being N 1°-11'-41" W, and all other bearings are from angles and distances measured in a field survey by Lee Surveying and Mapping Co., Inc. on August 7, 2000.

Description prepared by:

Jeffrey I. Lee
Professional Surveyor 6359
August 7, 2000



ORIGINAL STAMP IN GREEN

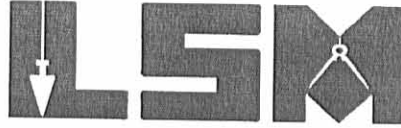
INDEXED ON MAP
4809105

REV'D 9-6-00 SJM OK ✓

Lee Surveying and Mapping Co., Inc.

Land Surveys • Topography • Subdivisions • Construction Layout

117 N. Madriver St.
Bellefontaine OH 43311



Phone: (937) 593-7335
Fax: (937) 593-7444

MEADE 60 FEET WIDE DRAINAGE TILE EASEMENT

Lying in Section 24, Town 1, Range 8, Miami Township, Logan County, Ohio.

Being through the Steve L. Meade and Lori M. Meade original 81.91 acre tract as deeded and described in Official Record 366, Page 632, Tract III of the Logan County Records of Deeds and being more particularly described as follows:

Being a 60 feet wide easement centered on the following described line.

Beginning at a MAG nail found on the west line of Section 24 at the intersection of the center-lines of Ohio Route 235 and Township Road 75 on Ohio Route 235 P.I. Station 233 + 23.98.

THENCE, with the center-line of Ohio Route 235 (60 feet wide), S 86°-13'-04" E, a distance of 335.00 feet to a MAG nail set.

THENCE, S 2°-02'-18" E, a distance of 1901.40 feet to a 5/8 inch iron rod set.

THENCE, S 86°-07'-49" E, a distance of 599.75 feet to a 5/8 inch iron rod set.

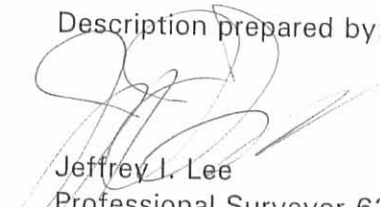
THENCE, S 3°-57'-32" E, a distance of 638.57 feet to a 5/8 inch iron rod set, passing a 5/8 inch iron rod set at 157.44 feet.

THENCE, S 87°-11'-26" E, a distance of 683.47 feet to a point at the TRUE POINT OF BEGINNING.

THENCE, with the center-line of the 60 feet wide easement, S 0°-00'-00" E, a distance of 61.00 feet to a point at the terminus of the easement.

The basis for bearings is the west line of Section 24, being N 1°-11'-41" W, and all other bearings are from angles and distances measured in a field survey by Lee Surveying and Mapping Co., Inc. on August 7, 2000.

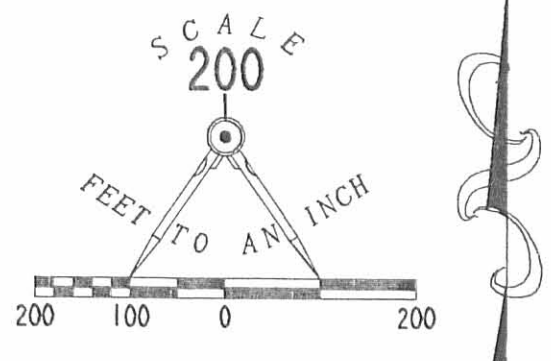
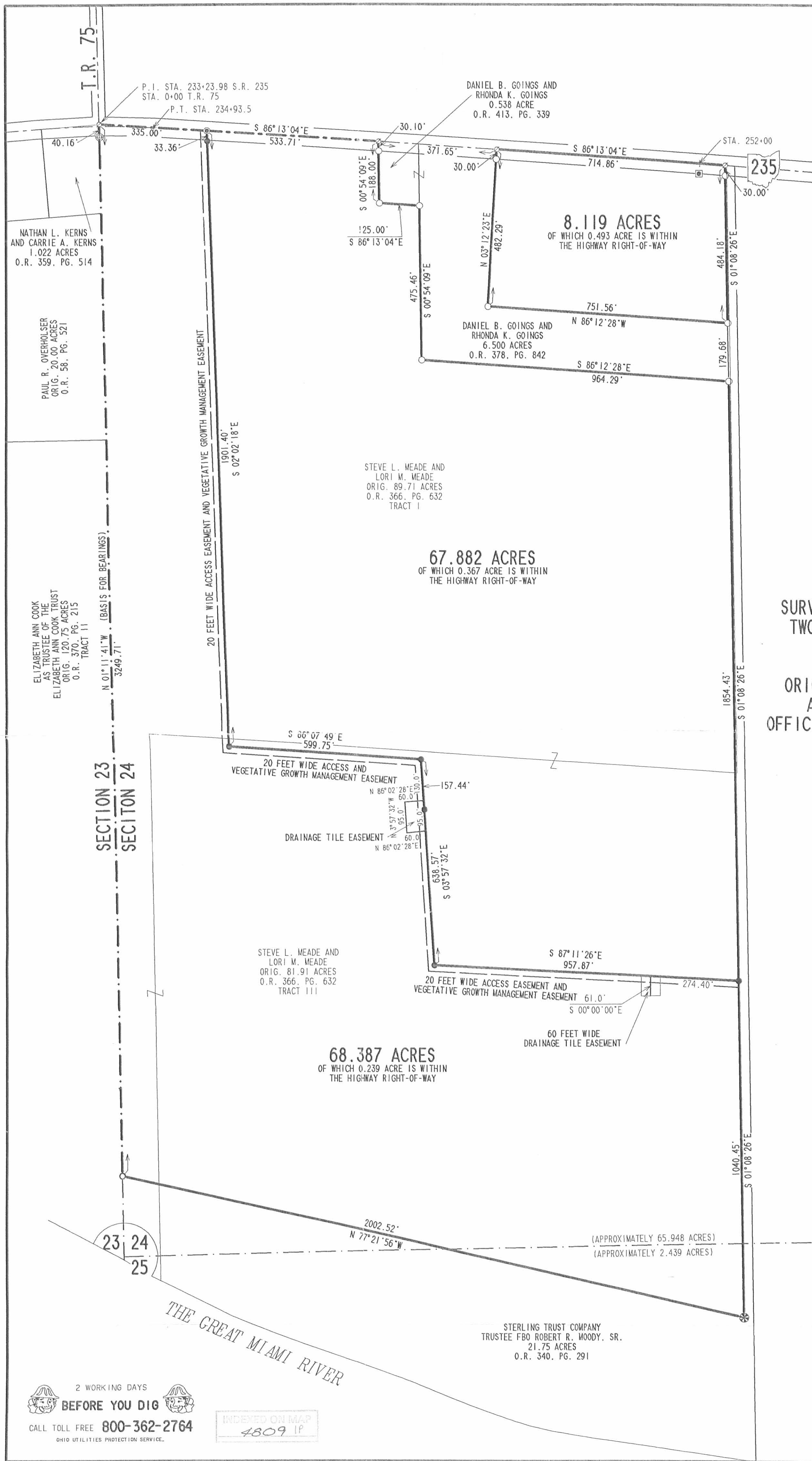
Description prepared by:


Jeffrey I. Lee
Professional Surveyor 6359
August 7, 2000



ORIGINAL STAMP IN GREEN

INDEXED ON MAP
4809 1D-6



- LEGEND**
- 5/8 INCH IRON ROD SET
 - 5/8 INCH IRON ROD FOUND
 - ⊗ 3/4 INCH IRON ROD SET
 - 3/4 INCH IRON ROD FOUND
 - MAG NAIL SET
 - MAG NAIL FOUND
 - CONCRETE RIGHT-OF-WAY MONUMENT FOUND
 - ⊕ 15" CONCRETE POST FOUND

SURVEY OF THREE TRACTS AND TWO EASEMENTS OUT OF THE STEVE L. MEADE AND LORI M. MEADE ORIGINAL 89.71 ACRE TRACT AND 81.91 ACRE TRACT OFFICIAL RECORD 366, PAGE 632 TRACTS I AND III SECTIONS 24 AND 25 TOWN I, RANGE 8 MIAMI TOWNSHIP LOGAN COUNTY, OHIO



SURVEYED BY: ORIGINAL STAMP IN GREEN
 JEFFREY J. LEE
 PROFESSIONAL SURVEYOR 6359
 AUGUST 7, 2000

COPYRIGHT 2000 BY:
 LEE SURVEYING & MAPPING CO., INC.
 117 North Madriver Street
 BELLEFONTAINE, OHIO 43311
 (937) 593-7335

BEFORE YOU DIG
 CALL TOLL FREE 800-362-2764
 OHIO UTILITIES PROTECTION SERVICE.

INDEXED ON MAP
 4809 IP

STERLING TRUST COMPANY
 TRUSTEE FBO ROBERT R. MOODY, SR.
 21.75 ACRES
 O.R. 340, PG. 291



REC'D 4-16-99 SMY OK ✓

Lee Surveying and Mapping Co., Inc.



Land Surveys • Topography • Subdivisions • Construction Layout

117 N. Madriver Street
Bellefontaine OH 43311

Phone: (937) 593-7335
Fax: (937) 593-7444

MEADE 0.538 ACRES

Lying in Section 24, Town 1, Range 8, Miami Township, Logan County, Ohio.

Being out of the Steve L. Meade and Lori M. Meade original 89.71 acre tract as deeded and described in Official Record 366, Page 632, Tract I and Official Record 374, Page 663, Tract I of the Logan County Records of Deeds and being more particularly described as follows:

Beginning at a MAG nail found on the center-line of Ohio Route 235 at the intersection with the center-line of Township Road 75 and the west line of Section 24.

THENCE, with the center-line of Ohio Route 235, (60 feet wide), N 71°-10'-50" E, a distance of 868.71 feet to a MAG nail set at the TRUE POINT OF BEGINNING.

THENCE, with the center-line of Ohio Route 235, N 71°-10'-50" E, a distance of 125.00 feet to a MAG nail found.

THENCE, with the west line of the Daniel B. Goings 6.500 acre tract (O.R. 378, Pg. 842), S 23°-30'-15" E, a distance of 188.00 feet to a 5/8 inch iron rod set, passing a 5/8 inch iron rod found at 30.10 feet.

THENCE, S 71°-10'-50" W, a distance of 125.00 feet to a 5/8 inch iron rod set.

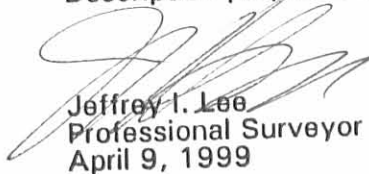
THENCE, N 23°-30'-15" W, a distance of 188.00 feet to the point of beginning, passing a 5/8 inch iron rod set at 157.90 feet.

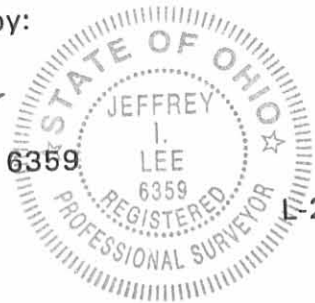
Containing 0.538 acres, of which 0.086 acre is within the highway right-of-way.

Reserving to the Grantor, their heirs and assigns, a 65.00 feet wide ingress/egress easement over the entire north end of the 0.538 acre tract.

The basis for bearings is the center-line of Ohio Route 235, being N 71°-10'-50" E, and all other bearings are from angles and distances measured in a field survey by Lee Surveying and Mapping Co., Inc. on April 8, 1999.

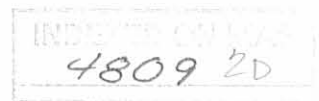
Description prepared by:


Jeffrey I. Lee
Professional Surveyor 6359
April 9, 1999



1-2662

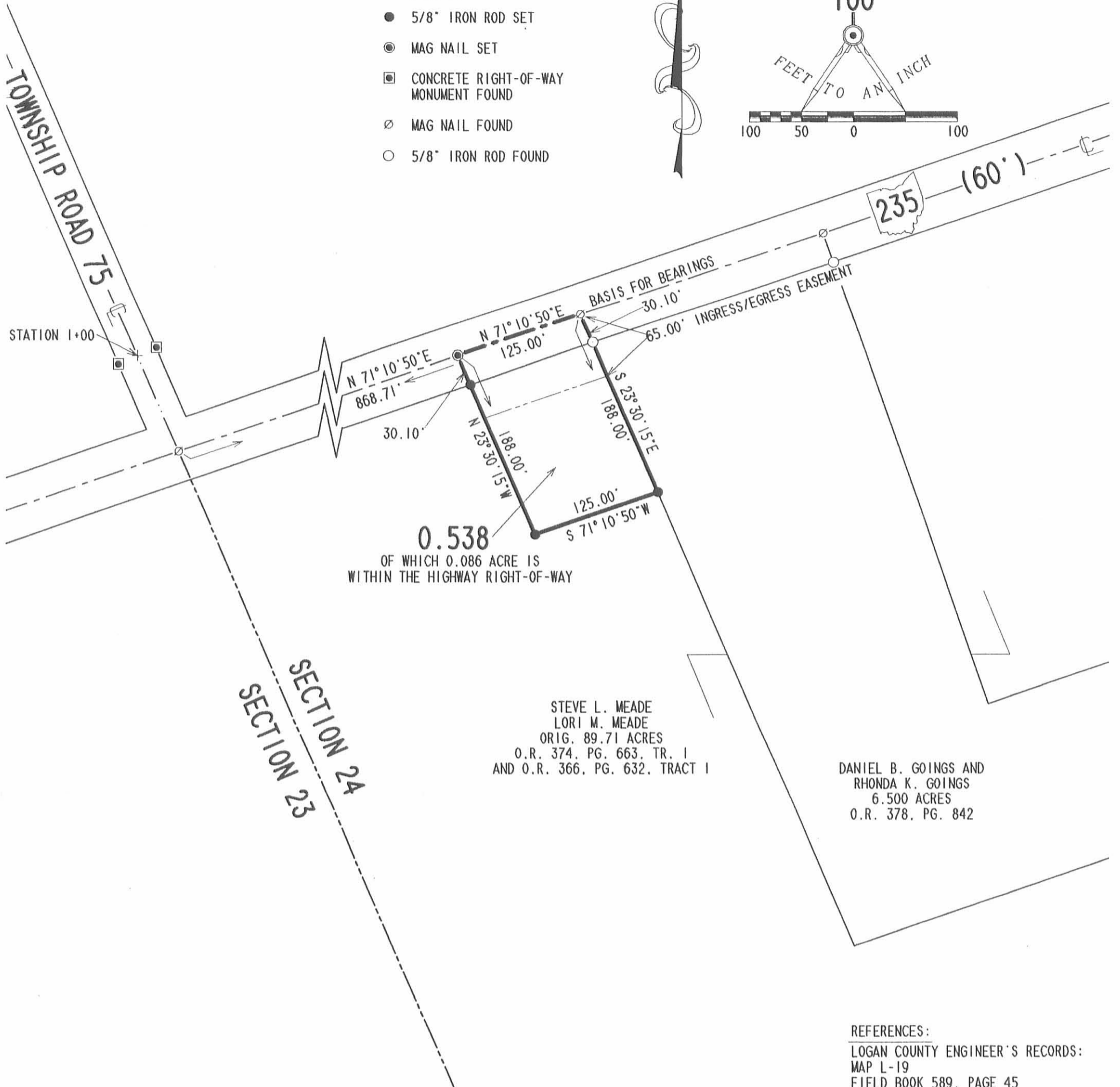
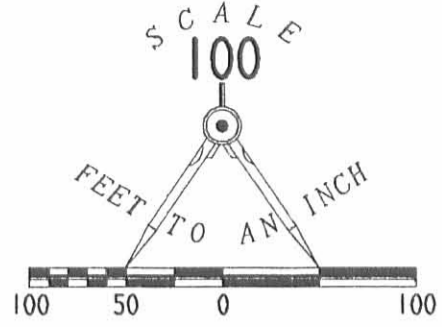
ORIGINAL STAMP IN GREEN



REC'D 4-16-99 SML/MLV

LEGEND

- 5/8" IRON ROD SET
- ⊙ MAG NAIL SET
- ▣ CONCRETE RIGHT-OF-WAY MONUMENT FOUND
- ⊘ MAG NAIL FOUND
- 5/8" IRON ROD FOUND



0.538
 OF WHICH 0.086 ACRE IS
 WITHIN THE HIGHWAY RIGHT-OF-WAY

STEVE L. MEADE
 LORI M. MEADE
 ORIG. 89.71 ACRES
 O.R. 374, PG. 663, TR. 1
 AND O.R. 366, PG. 632, TRACT 1

DANIEL B. GOINGS AND
 RHONDA K. GOINGS
 6.500 ACRES
 O.R. 378, PG. 842

SECTION 23
 SECTION 24

REFERENCES:

- LOGAN COUNTY ENGINEER'S RECORDS:
- MAP L-19
- FIELD BOOK 589, PAGE 45
- R-5310
- R-8906
- 1910 MIAMI TOWNSHIP TAX MAP
- SECTIONS 23 AND 24
- ODOT-LOG-235-4.60 DATED 2-8-84
- DEED RECORDS
- VOLUME 124, PAGE 493

**SURVEY OF 0.538 ACRE
 OUT OF THE STEVE L. MEADE
 AND LORI M. MEADE
 ORIGINAL 89.71 ACRE TRACT
 OFFICIAL RECORD 374, PAGE 663 AND
 OFFICIAL RECORD 366, PAGE 632
 SECTION 24, TOWN 1, RANGE 8
 MIAMI TOWNSHIP
 LOGAN COUNTY, OHIO**

SURVEYED BY:

JEFFREY I. LEE
 PROFESSIONAL SURVEYOR 6359
 APRIL 8, 1999



ORIGINAL STAMP IN GREEN

COPYRIGHT 1999 BY:

LEE SURVEYING & MAPPING CO., INC.
 117 North Madriver Street
 BELLEFONTAINE, OHIO 43311
 (937) 593-7335

2 WORKING DAYS
BEFORE YOU DIG
 CALL TOLL FREE **800-362-2764**
 OHIO UTILITIES PROTECTION SERVICE.

IND. 450 ON MAP
 4809 2P

D-344 SMEADE2 L-2662-3

REC'D 8-20-98 SML OK ✓



Lee Surveying and Mapping Co., Inc.



Land Surveys • Topography • Subdivisions • Construction Layout

117 N. Madriver Street
Bellefontaine OH 43311

Phone: (937) 593-7335
Fax: (937) 593-7444

MEADE 6.500 ACRES

Lying in Section 24, Town 1, Range 8, Miami Township, Logan County, Ohio.

Being out of the Steve L. Meade and Lori M. Meade original 89.71 acre tract as deeded and described in Official Record 366, Page 632 and Official Record 374, Page 663 of the Logan County Records of Deeds and being more particularly described as follows:

Beginning at a MAG nail set on the center-line of Ohio Route 235 at the intersection with the center-line of Township Road 75 and the west line of Section 24.

THENCE, with the center-line of Ohio Route 235, (60 feet wide), N 71°-10'-50" E, a distance of 993.71 feet to a MAG nail set at the TRUE POINT OF BEGINNING.

THENCE, with the center-line of Ohio Route 235, N 71°-10'-50" E, a distance of 246.65 feet to a MAG nail set.

THENCE, S 19°-23'-43" E, a distance of 482.29 feet to a 5/8 inch iron rod set, passing a 5/8 inch iron rod set at 30.00 feet.

THENCE, N 71°-11'-26" E, a distance of 751.56 feet to a 5/8 inch iron rod set on the west line of the Sterling Trust Company, Trustee FBO Robert E. Moody, Sr. original 21.75 acre tract, (O.R. 340, Pg. 291).

THENCE, with the west line of the said 21.75 acre tract, S 23°-44'-32" E, a distance of 179.68 feet to a 5/8 inch iron rod set.


THENCE, S 71°-11'-26" W, a distance of 964.29 feet to a 5/8 inch iron rod set.

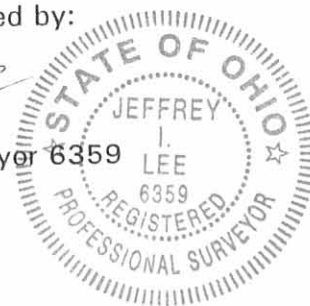
THENCE, N 23°-30'-15" W, a distance of 663.46 feet to the point of beginning, passing a 5/8 inch iron rod set at 633.46 feet.

Containing 6.500 acres, of which 0.169 acre is within the highway right-of-way.

The basis for bearings is the center-line of Ohio Route 235, being N 71°-10'-50" E, and all other bearings are from angles and distances measured in a field survey by Lee Surveying and Mapping Co., Inc. on August 18, 1998.

Description prepared by:

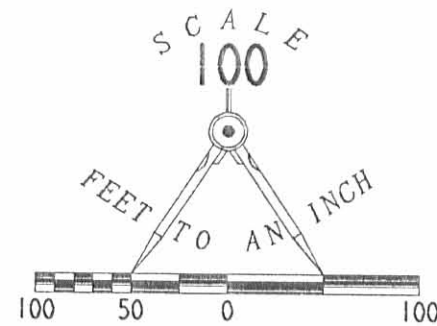

Jeffrey I. Lee
Professional Surveyor
August 19, 1998



L-2662

ORIGINAL STAMP IN GREEN

INDEXED ON MAP
4809 3D



- LEGEND**
- 5/8" IRON ROD SET
 - ⊙ MAG NAIL SET
 - ⊠ CONCRETE RIGHT-OF-WAY MONUMENT FOUND

TOWNSHIP ROAD 75

STATION 1+00

STATION 252+00

STATION 253+00

235 (60')

SECTION 24
SECTION 23

STERLING TRUST COMPANY
TRUSTEE FBO ROBERT E. MOODY, SR.
21.75 ACRES
O.R. 340, PG. 291

6.500 ACRES
0.169 ACRE IS WITHIN THE
HIGHWAY RIGHT-OF-WAY

**SURVEY OF 6.500 ACRES
OUT OF THE STEVE L. MEADE
AND LORI M. MEADE
ORIGINAL 89.71 ACRE TRACT
OFFICIAL RECORD 374, PAGE 663 AND
OFFICIAL RECORD 366, PAGE 632
SECTION 24, TOWN 1, RANGE 8
MIAMI TOWNSHIP
LOGAN COUNTY, OHIO**

REFERENCES:
LOGAN COUNTY ENGINEER'S RECORDS:
MAP L-19
FIELD BOOK 589, PAGE 45
R-5310
R-8906
1910 MIAMI TOWNSHIP TAX MAP
-SECTIONS 23 AND 24
ODOT-LOG-235-4.60 DATED 2-8-84
DEED RECORDS
-VOLUME 124, PAGE 493

STEVE L. MEADE
LORI M. MEADE
89.71 ACRES
O.R. 374, PG. 663, TR. 1
AND O.R. 366, PG. 632

SURVEYED BY:

JEFFREY I. LEE
PROFESSIONAL SURVEYOR 6359
AUGUST 18, 1998



COPYRIGHT 1998 BY:
LEE SURVEYING & MAPPING CO., INC.
117 North Madriver Street
BELLEFONTAINE, OHIO 43311
(937) 593-7335

2 WORKING DAYS
BEFORE YOU DIG
CALL TOLL FREE **800-362-2764**
OHIO UTILITIES PROTECTION SERVICE.

INDEXED ON MAP
4009 3P

ORIGINAL STAMP IN GREEN

D-331 SMEADE L-2662-2

PROFESSIONAL SURVEYOR'S AFFIDAVIT

STATE OF OHIO
RECEIVED _____

TIME _____

RECORDED _____

OFFICIAL RECORD _____ PAGE _____

COUNTY RECORDER ss:

Jeffrey I. Lee, being first duly sworn, deposes and says that he is a Registered Professional Surveyor under the laws of the State of Ohio, being Professional Surveyor No. 6359 and that he is making this affidavit for the purposes of correcting the description to certain real estate situated in Miami Township, Logan County, Ohio, presently owned by Steve L. Meade and Lori M. Meade by virtue of a General Warranty Survivorship Deed recorded in Official Record Volume 366, Page 632 of the Logan County Records of Deeds.

The corrected description being as follows with corrections underlined:

TRACT I: Situated in Miami Township, Logan County, Ohio, and known as the Dr. R.S. Gilchrist River Farm, being a part thereof, which is a part of the west side of Section 24, Town 1, Range 8, East, commencing at a stone in the west line of said Sec. 24 and the middle of the Swonger and Marquis Pike; thence with the center of said pike S 86 E. 29.57 chains to a point 25 feet west of a stone at the corner between the said Gilchrist and Isaac Pool farms; thence parallel with the line between the said two farms and 25 feet therefrom South 1 East 28.84 chains to a point 25 feet N 86 West of a stone and 4 pieces of brick in said line between two small elms; thence parallel with said pike N 86 W 27.29 chains to a stone and half brick 211 links east of another stone and part of a link in the west line of said Section 24 and in a ravine beside a large rock; thence parallel with the west line of said Section and 211 links therefrom S 1/2 E 24 chains more or less to the north bank of the Miami River, passing a stone and half brick near said river bank; thence in a northwesterly direction down with the north bank of said Miami River to a stone and half brick at the S.W. corner of said Section 24; thence with the said west line of Section 24, N 1/2 W 23.08 chains to a stone and half brick, as aforesaid in a ravine beside a large rock; thence again with said west line 28.84 chains to the beginning, containing 89.71 acres of land, more or less, and being the premises described in a deed recorded in Page 412 of Vol. 121 of the Deed Records of Logan County, Ohio.

TRACT II: Situated in Miami Township, Logan County, Ohio, and being all of the lands east of the west section line of Section 24, Town 1, Range 8 East, in said county, bordering on the lands in said Section of which Luther H. Pool was the owner and was in possession of by agreement between one Luther H. Pool and Thomas C. Ross, et al, a stone and brick are planted exactly on said west section line near what was the dividing line between the Nichols portion and portion that was owned by Mrs. Ann B. Gilchrist, and which stone and brick on said Section line is 9 feet and 9 inches west of the stone that had been planted on the west end of said division line between said Nichols and Gilchrist land; the line herein established begins at a stone in the west section line, located in the center of Marquis and Swonger Pike and the road north and extending south to a stone and three brick, near the north bank of the Miami River, which stone and three brick are planted by agreement of all parties mentioned in deed hereafter referred to. Said line passing over the stone and brick planted by agreement 9 feet and 9 inches west of the stone and brick on the west end of said division line between said Nichols and Gilchrist land, and this deed is made for the purpose of perfecting the west line of the lands of said Section owned by said Luther H. Pool and bringing said west line of said lands exactly and squarely with said section line of Section 24, Town 1, Range 8 East, and being recorded on Page 493 of Vol. 124, of the Deed Records of Logan County, Ohio.

TRACT III: Situated in the Township of Miami, County of Logan and State of Ohio and known as Dr. R.S. Gilchrist's River Farm and being a part thereof which is the south part of the west side of Section 24, Town 1, Range 8 East, and bounded as follows: Beginning at a stone in the Swonger and Marquis pike at the N.W. corner of Isaac Pool's land in said Section; thence with said pike N 86 W 25 feet; thence, parallel with said Isaac Pool's west line and the east line of the said Dr. R.S. Gilchrist farm and 25 feet therefrom S 1 E, 28.84 chains to a point N 86 W, from a stone and 4 pieces of brick between two small elm trees in the line between said Pool and Gilchrist lands, and 25 feet from said stone; thence parallel with said pike N 86 W 27.29 chains to a stone and half brick; 211 links east of another stone and half brick in the west line of the said Section 24; thence, parallel with the west line of Section 24, and 211 links therefrom S 1/2 E 24 chains more or less to the north bank of the Miami River, passing a stone and half brick near the river; thence in a southeasterly course up the north bank of the Miami river to a burr oak bush 4 inches in diameter at the south side of a stump at said Isaac Pool's

INDEXED ON MAP
A009 4D-1

southwest corner on the north bank of said River; thence with the line between the lands of said Pool and said Gilchrist N 1 W 60.27 chains passing the aforesaid stone and four pieces of brick at 31.43 chains to the place of beginning, containing 81.91 acres, including all the part of said Section 25 including in said R.S. Gilchrist farm, and being the premises described by deed recorded on Page 422 of Vol. 120 of the deed records of Logan County, Ohio.

Excepting from Tract I, II and III the following described real estate: Situated in the County of Logan, State of Ohio, Township of Miami, and being the west half of Fractional Section 24 and 25, Town 1, Range 8 East, and beginning at Station 252+79.22 in the centerline of State Route 235 as shown in Logan County Engineer's Field Book No. 415; thence S 1°29' W, 3559.6 feet to an iron bar, passing an iron bar at 30.1 feet, said course being 30 feet from and parallel with the west line of Stanley A. Smith's 157 acre tract; thence, N 74°36' W, 2007.8 feet to an iron bar in the east line of Howard C. Dodson's 100.93 acre tract, passing iron bars at 400.0 feet, 800.0 feet and 1400 feet; thence with said Dodson's east line S 0°30' E, 253.6 feet to the north bank of the Great Miami River; thence, with said north bank in a southeasterly direction to the west line of Stanley A. Smith's 157 acre tract; thence with said Smith's west line N 1°29' E, 4039.3 feet to a point in the center-line of State Route 235; thence, with said center-line N 83°32' W, a distance of 30.1 feet to the place of beginning.

Containing 21.75 acres, more of less, of which 5.3 acres are in Section 24 and 16.45 acres are in Section 25.

Containing in all three tracts, after said exception, a total of 149.87 acres, 145.67 acres of which are in Section 24, Town 1, Range 8 East and known as Parcel No. 25-116-00-00-019-000 and 4.20 acres of which are in Section 25, Town 1, Range 8 East and known as Parcel No. 25-116-00-00-020-000.

Subject to all legal highways, conditions, restrictions and easements of record, if any.

Prior Instrument reference: O.R. Volume 133, Page 917

EXCEPTING all taxes and assessments, which shall be prorated as of the date of this deed.

This affidavit is made in compliance with Revised Code of Ohio Sec. 5301.252 and particularly to show an affidavit of a professional surveyor to reconcile conflicts and ambiguities in descriptions of land in recorded instruments as stated in paragraph B(5) of Section 5301.252. Under Sec. 5301.252(C) the County Recorder shall receive and cause such affidavit to be recorded as deeds are recorded.

SIGNED AND ACKNOWLEDGED IN THE PRESENCE OF:

E. Ann Culp E. Ann Culp

Cheryl L. Hawkins Cheryl L. Hawkins

Jeffrey I. Lee
Jeffrey I. Lee
Professional Surveyor



STATE OF OHIO,
LOGAN COUNTY, SS:

ORIGINAL STAMP IN GREEN

BE IT REMEMBERED, that on this 4th day of August, 1998, before me, the subscriber, a Notary Public in and for said County and State, personally came the above named Jeffrey I. Lee the maker of the foregoing Affidavit, and acknowledged the signing of the same to be his voluntary act and deed, for the uses and purposes therein mentioned.

IN TESTIMONY WHEREOF, I have hereunto subscribed my name and affixed my official seal, on the day and year last aforesaid.

Cheryl L. Hawkins CHERYL L. HAWKINS
Notary Public, State of Ohio
My commission expires 11-5-99

RECORDER:
Please cross reference to Official Record Volume 366, Page 632 in the Abstract of the Deed Records of Logan County, Ohio.

This instrument was prepared by Jeffrey I. Lee.

L-2662



BARNES SURVEY

May 15, 1970

The following described real estate situated in the west $\frac{1}{2}$ of Fractional Sections 24 and 25, Town 1, Range 8 E., Miami Township, Logan County, Ohio and being more particularly described as follows:

Beginning at Station 252+79.22 in the centerline of S.R. 235 as shown in Logan County Engineer's Field Book No. 415; thence S. $1^{\circ}29'$ W. 3559.6 feet to an iron bar, passing an iron bar at 30.1 feet, said course being 30 feet from and parallel with the west line of Stanley A. Smith's 157 acre tract; thence N. $74^{\circ}36'$ W. 2007.8 feet to an iron bar in the east line of Howard C. Dodson's 100.93 acre tract, passing iron bars at 400.0 feet 800.0 feet and 1400 feet; thence with said Dodson's east line S. $0^{\circ}30'$ E. 253.6 feet to the north bank of the Great Miami River; thence with said north bank in a southeasterly direction to the west line of Stanley A. Smith's 157 acre tract; thence with said Smith's west line N. $1^{\circ}29'$ E. 4039.3 feet to a point in the centerline of S.R. 235; thence with said centerline N. $83^{\circ}32'$ W. 30.1 feet to the place of beginning.

Containing 21.75 acres more or less, of which 5.3 acres in Section 24 and 16.45 acres are in Section 25.

INDEXED ON MAP
4809 5D

HOWARD C. DOOSON
100.93 AC.

MARY M. BARNES
171.62 AC.

STANLEY A. SMITH
157 AC.

N. 83° 32' W - 514.15
SR 235 (60')

5 0° 30' E

3 1° 29' W
N 1° 29' E
3557.6'
4039.3'

253.6'

N. 74° 36' W - 600.0'
2007.8'
400.0'
400.0'

Sec 24
Sec 25

21.75 AC.

North Bank Great Miami River

BARNES SURVEY
MAY 15, 1970
FRACT. SEC. 24 & 25, T. 1, R. 8 E.
MIAMI TOWNSHIP
LOGAN COUNTY, OHIO

SCALE 1" = 400'
O = 3/4" IRON BAR

INDEXED ON MAP
4809 5P