



REC'D 2-22-98 Smg OK ✓

# Lee Surveying and Mapping Co., Inc.



Land Surveys • Topography • Subdivisions • Construction Layout

117 N. Madriver Street  
Bellefontaine OH 43311

Phone: (937) 593-7335  
Fax: (937) 593-7444

## REILLY 88.580 ACRES TRACT A

Lying in Section 17, Town 3, Range 13, Miami Township, Logan County, Ohio.

Being out of the Corinne D. Reilly original 159.52 acre tract as deeded and described in Official Record 99, Page 794, Second Tract of the Logan County Records of Deeds and being more particularly described as follows:

Beginning at stone found at the northwest corner of Section 17.

THENCE, with the west line of Section 17 and the east line of the Anthony Lee Upton 152.47 acre tract (O.R. 129, Pg. 619), S 0°-00'-00" W, a distance of 371.32 feet to a 5/8 inch iron rod set at the TRUE POINT OF BEGINNING.

THENCE, with the southerly line of the C.C.C. & St. L. Ry. Co. Railroad 6.89 acre tract (Vol. 129, Pg. 487, First Parcel), N 80°-49'-56" E, a distance of 1097.15 feet to a 5/8 inch iron rod set.

THENCE, S 0°-44'-24" W, a distance of 218.92 feet to a 5/8 inch iron rod set.

THENCE, N 89°-08'-15" E, a distance of 790.73 feet to a 5/8 inch iron rod set.

THENCE, N 0°-44'-24" E, a distance of 291.80 feet to a 5/8 inch iron rod set on the southerly right-of-way of County Highway 63 ( 40' wide).

THENCE, with the southerly right-of-way of County Highway 63 and the line of the said 6.89 acre tract the following 2 courses:

S 54°-10'-04" E, a distance of 31.90 feet to a 5/8 inch iron rod set.

N 75°-05'-53" E, a distance of 199.12 feet to a 5/8 inch iron rod set.

THENCE, S 0°-44'-24" W, a distance of 334.18 feet to a 5/8 inch iron rod set.

THENCE, S 45°-28'-24" E, a distance of 221.86 feet to a 5/8 inch iron rod set.

THENCE, N 89°-08'-16" E, a distance of 442.09 feet to a 5/8 inch iron rod set.

THENCE, with the Quarter section line, and the west line of the Ricky R. Roby original 45.23 acre tract (O.R. 245, Pg. 224) and the west line of the Charles A. Wood original 45.23 acre tract (O.R. 202, Pg. 255), S 0°-24'-40" W, a distance of 764.09 feet to a 5/8 inch iron rod set.

THENCE, S 89°-18'-56" W, a distance of 1193.57 feet to a 5/8 inch iron rod set.

THENCE, S 2°-34'-06" E, a distance of 290.57 feet to a 5/8 inch iron rod set.

THENCE, S 83°-00'-02" W, a distance of 750.42 feet to a 5/8 inch iron rod set.

THENCE, S 1°-06'-03" W, a distance of 945.76 feet to a 5/8 inch iron rod found.


THENCE, with the north line of the Ronald G. Helman 72.02 acre tract (O.R. 336, Pg. 905), N 89°-56'-38" W, a distance of 739.96 feet to a 5/8 inch iron rod set.

THENCE, with the west line of Section 17 and the east line of the said 152.47 acre tract, N 00°-00'-00" E, a distance of 2295.88 feet to the point of beginning.

Containing 88.580 acres.

The basis for bearings is based upon the west line of Section 17 being N 00°-00'-00" E, and all other bearings are from angles and distances measured in a field survey by Lee Surveying and Mapping Company on February 12, 1999.

Description prepared by:

  
Jeffrey I. Lee  
Professional Surveyor 6359  
February 15, 1999



4956 1D-1

ORIGINAL STAND IN I-2708



REC'D 2-22-98 SWM OK ✓

# Lee Surveying and Mapping Co., Inc.



Land Surveys • Topography • Subdivisions • Construction Layout

117 N. Madriver Street  
Bellefontaine OH 43311

Phone: (937) 593-7335  
Fax: (937) 593-7444

## REILLY 2.657 ACRES TRACT B

Lying in Section 17, Town 3, Range 13, Miami Township, Logan County, Ohio.

Being out of the Corinne D. Reilly original 159.52 acre tract as deeded and described in Official Record 99, Page 794, Second Tract of the Logan County Records of Deeds and being more particularly described as follows:

Beginning at stone found at the northwest corner of Section 17.

THENCE, with the north line of Section 17, S 89°-18'-17" E, a distance of 1166.40 feet to a 5/8 inch iron rod set.

THENCE, with the lines of the C.C.C. & St. L. Ry. Co. 6.89 acre tract (Vol. 129, Pg. 487, First Parcel) the following 3 courses:

S 89°-19'-18" W, a distance of 422.16 feet to a point in County Highway 63 (40 feet wide).

S 0°-06'-04" E, a distance of 95.16 feet to a 5/8 inch iron rod set passing a 5/8 inch iron rod set at 12.06 feet.

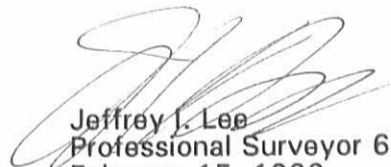
S 80°-49'-56" W, a distance of 733.70 feet to a 5/8 inch iron rod set.

THENCE, with the west line of Section 17 and the east line of the Anthony Lee Upton 152.47 acre tract (O.R. 129, Pg. 619), N 00°-00'-00" E, a distance of 219.38 feet to the point of beginning, passing a 5/8 inch iron rod set at 173.18 feet.

Containing 2.657 acres of which 0.687 acre is in the highway right-of-way.

The basis for bearings is based upon the west line of Section 17 being N 00°-00'-00" E, and all other bearings are from angles and distances measured in a field survey by Lee Surveying and Mapping Company on February 12, 1999.

Description prepared by:

  
Jeffrey I. Lee  
Professional Surveyor 6359  
February 15, 1999



L-2708

4956 1D-2



REC'D 2-22-99 SMJ ALV

# Lee Surveying and Mapping Co., Inc.



Land Surveys • Topography • Subdivisions • Construction Layout

117 N. Madriver Street  
Bellefontaine OH 43311

Phone: (937) 593-7335  
Fax: (937) 593-7444

## REILLY 5.000 ACRES TRACT C

Lying in Section 17, Town 3, Range 13, Miami Township, Logan County, Ohio.

Being out of the Corinne D. Reilly original 159.52 acre tract as deeded and described in Official Record 99, Page 794, Second Tract of the Logan County Records of Deeds and being more particularly described as follows:

Beginning at stone found at the northwest corner of Section 17.

THENCE, with the west line of Section 17 and the east line of Anthony Lee Upton 152.47 acre tract (O.R. 129, Pg. 619), S 0°-00'-00" W, a distance of 371.32 feet to a 5/8 inch iron rod set.

THENCE, with the southerly line of the C.C.C. & St. L. Ry. Co. 6.89 acre tract (O.R. 129, Pg. 487, First Parcel), N 80°-49'-56" E, a distance of 1097.15 feet to a 5/8 inch iron rod set at the TRUE POINT OF BEGINNING.

THENCE, with the southerly line of the said 6.89 acre tract, N 80°-49'-56" E, a distance of 752.55 feet to a 5/8 inch iron rod set on the westerly right-of-way of County Highway 63 (40 feet wide).

THENCE, with the southerly line of the said 6.89 acre tract, and the southerly right-of-way of County Highway 63, S 54°-10'-04" E, a distance of 60.00 feet to a 5/8 inch iron rod set.

THENCE, S 0°-44'-24" W, a distance of 291.80 feet to a 5/8 inch iron rod set.


THENCE, S 89°-08'-15" W, a distance of 790.73 feet to a 5/8 inch iron rod set.

THENCE, N 0°-44'-24" E, a distance of 218.92 feet to the point of beginning.

Containing 5.000 acres.

The basis for bearings is based upon the west line of Section 17 being N 00°-00'-00" E, and all other bearings are from angles and distances measured in a field survey by Lee Surveying and Mapping Company on February 12, 1999.

Description prepared by:

  
Jeffrey I. Lee  
Professional Surveyor 6359  
February 15, 1999



L-2708

ORIGINAL STAMP IN GREEN

4956 1D-3



REC'D 2-22-98 SMJ DL ✓

# Lee Surveying and Mapping Co., Inc.



Land Surveys • Topography • Subdivisions • Construction Layout

117 N. Madriver Street  
Bellefontaine OH 43311

Phone: (937) 593-7335  
Fax: (937) 593-7444

## REILLY 7.335 ACRES TRACT D

Lying in Sections 17 and 18, Town 3, Range 13, Miami Township, Logan County, Ohio.

Being out of the Corinne D. Reilly original 4.0 and original 159.52 acre tract as deeded and described in Official Record 99, Page 794, First and Second Tracts of the Logan County Records of Deeds and being more particularly described as follows:

Beginning at stone found at the intersection of the center-line of Township Road 71 (60 feet wide) and the east line of the northwest quarter of Section 17.

THENCE, with the Quarter Section line and the westerly lines of Charles A. Wood original 45.23 acre tract (O.R. 202, Pg. 255) and the Ricky R. Roby original 45.23 acre tract (O.R. 245, Pg. 224), N 0°-24'-40" E, a distance of 2105.15 feet to a 5/8 inch iron rod set at the TRUE POINT OF BEGINNING, passing a 5/8 inch iron rod set at 30.00 feet.

THENCE, S 89°-08'-16" W, a distance of 442.09 feet to a 5/8 inch iron rod set.

THENCE, N 45°-28'-24" W, a distance of 221.86 feet to a 5/8 inch iron rod set.

THENCE, N 0°-44'-24" E, a distance of 334.18 feet to a 5/8 inch iron rod set on the south right-of-way of County Highway 63 ( 40' wide).

THENCE, with the south right-of-way of County Highway 63 and the south line of the C.C.C. & St. L. Ry. Co. 6.89 acre tract (O.R. 129, Pg. 487, First Parcel), N 75°-06'-04" E, a distance of 200.18 feet to a 5/8 inch iron rod set on the north line of Section 17.

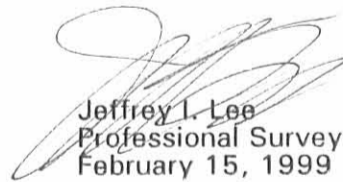
THENCE, with the south right-of-way of County Highway 63 and the south line of the C.C.C. & St. L. Ry. Co. 5.82 acre tract (O.R. 129, Pg. 487, Second Parcel), N 80°-48'-50" E, a distance of 412.04 feet to a 5/8 inch iron rod set on the east line of the southwest quarter of Section 18.

THENCE, with the east line of the southwest quarter of Section 18, and the east line of the northwest quarter of Section 17, and the west line of the said Ricky R. Roby original 45.23 acre tract, S 0°-24'-40" W, a distance of 600.35 feet to the point of beginning.

Containing 7.335 acres of which 0.330 acre is in Section 18 and 7.005 acres are in Section 17.

The basis for bearings is based upon the west line of Section 17 being N 00°-00'-00" E, and all other bearings are from angles and distances measured in a field survey by Lee Surveying and Mapping Company on February 12, 1999.

Description prepared by:

  
Jeffrey I. Lee  
Professional Surveyor 6359  
February 15, 1999



L-2708

ORIGINAL STAMP IN GREEN

4956 1D-4



REC'D 2-22-99 SWM OK ✓

# Lee Surveying and Mapping Co., Inc.



Land Surveys • Topography • Subdivisions • Construction Layout

117 N. Madriver Street  
Bellefontaine OH 43311

Phone: (937) 593-7335  
Fax: (937) 593-7444

## REILLY 8.782 ACRES TRACT E

Lying in Section 17, Town 3, Range 13, Miami Township, Logan County, Ohio.

Being out of the Corinne D. Reilly original 159.52 acre tract as deeded and described in Official Record 99, Page 794, Second Tract of the Logan County Records of Deeds and being more particularly described as follows:

Beginning at stone found at the intersection of the center-line of Township Road 71 (60 feet wide) and the east line of the northwest quarter of Section 17.

THENCE, with the center-line of Township Road 71, S 89°-49'-27" W, a distance of 60.01 feet to a MAG nail set.

THENCE, N 00°-24'-40" E, a distance of 675.51 feet to a 5/8 inch iron rod set, passing a 5/8 inch iron rod set at 30.00 feet.

THENCE, S 88°-51'-17" W, a distance of 452.76 feet to a 5/8 inch iron rod set.

THENCE, N 0°-20'-41" E, a distance of 668.65 feet to a 5/8 inch iron rod set.

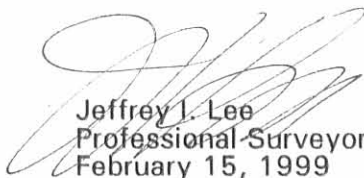
THENCE, N 89°-18'-56" E, a distance of 513.47 feet to a 5/8 inch iron rod set.

THENCE, with the east line of the northwest quarter of Section 17, and the west line of the Charles A. Wood original 45.23 acre tract (O.R. 202, Pg. 255), S 0°-24'-40" W, a distance of 1341.06 feet to the point of beginning, passing a 5/8 inch iron rod set at 1311.06.

Containing 8.782 acres of which 0.041 acre is in the highway right-of-way.

The basis for bearings is based upon the west line of Section 17 being N 00°-00'-00" E, and all other bearings are from angles and distances measured in a field survey by Lee Surveying and Mapping Company on February 12, 1999.

Description prepared by:

  
Jeffrey I. Lee  
Professional Surveyor 6359  
February 15, 1999



L-2708

ORIGINAL STAMP IN GREEN

4956 ID-5



REC'D 2-22-98 SMY OKV

# Lee Surveying and Mapping Co., Inc.



Land Surveys • Topography • Subdivisions • Construction Layout

117 N. Madriver Street  
Bellefontaine OH 43311

Phone: (937) 593-7335  
Fax: (937) 593-7444

## REILLY 10.076 ACRES TRACT F

Lying in Section 17, Town 3, Range 13, Miami Township, Logan County, Ohio.

Being out of the Corinne D. Reilly original 159.52 acre tract as deeded and described in Official Record 99, Page 794, Second Tract of the Logan County Records of Deeds and being more particularly described as follows:

Beginning at stone found at the intersection of the center-line of Township Road 71 (60 feet wide) and the east line of the northwest quarter of Section 17.

THENCE, with the center-line of Township Road 71, S 89°-49'-27" W, a distance of 60.01 feet to a MAG nail set at the TRUE POINT OF BEGINNING.

THENCE, with the center-line of Township Road 71, S 89°-49'-27" W, a distance of 60.01 feet to a MAG nail set.

THENCE, N 00°-24'-40" E, a distance of 614.48 feet to a 5/8 inch iron rod set, passing a 5/8 inch iron rod set at 30.00 feet.

THENCE, S 88°-51'-17" W, a distance of 905.38 feet to a 5/8 inch iron rod set.

THENCE, N 0°-16'-44" E, a distance of 732.78 feet to a 5/8 inch iron rod set.

THENCE, N 89°-18'-56" E, a distance of 513.47 feet to a 5/8 inch iron rod set.

THENCE, S 0°-20'-41" W, a distance of 668.65 feet to a 5/8 inch iron rod set.

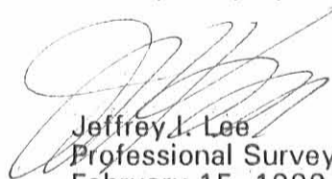
THENCE, N 88°-51'-17" E, a distance of 452.76 feet to a 5/8 inch iron rod set.

THENCE, S 0°-24'-40" W, a distance of 675.51 feet to the point of beginning, passing a 5/8 inch iron rod set 645.51 feet.

Containing 10.076 acres of which 0.041 acre is in the highway right-of-way.

The basis for bearings is based upon the west line of Section 17 being N 00°-00'-00" E, and all other bearings are from angles and distances measured in a field survey by Lee Surveying and Mapping Company on February 12, 1999.

Description prepared by:

  
Jeffrey J. Lee  
Professional Surveyor 6359  
February 15, 1999



L-2708

ORIGINAL STAMP IN GREEN

4956 ID-6



REC'D 2-22-98 SMY OK ✓

# Lee Surveying and Mapping Co., Inc.



Land Surveys • Topography • Subdivisions • Construction Layout

117 N. Madriver Street  
Bellefontaine OH 43311

Phone: (937) 593-7335  
Fax: (937) 593-7444

## REILLY 10.809 ACRES TRACT G

Lying in Section 17, Town 3, Range 13, Miami Township, Logan County, Ohio.

Being out of the Corinne D. Reilly original 159.52 acre tract as deeded and described in Official Record 99, Page 794, Second Tract of the Logan County Records of Deeds and being more particularly described as follows:

Beginning at stone found at the intersection of the center-line of Township Road 71 (60 feet wide) and the east line of the northwest quarter of Section 17.

THENCE, with the center-line of Township Road 71, S 89°-49'-27" W, a distance of 539.76 feet to a MAG nail set at the TRUE POINT OF BEGINNING.

THENCE, with the center-line of Township Road 71, S 89°-49'-27" W, a distance of 60.00 feet to a stone found.

THENCE, with the lines of the Corinne D. Reilly two 6.04 acre tracts (O.R. 163, Pg. 461 and Vol. 380, Pg. 184), N 0°-32'-17" E, a distance of 40.03 feet to a 5/8 inch iron rod set, passing a 5/8 inch iron rod set at 30.00 feet.

THENCE, with the lines of the Corinne D. Reilly 6.04 acre tract (Vol. 380, Pg. 184), the following 3 courses:

N 89°-56'-32" W, a distance of 484.14 feet to a 5/8 inch iron rod found.

N 0°-16'-44" E, a distance of 559.56 feet to a 5/8 inch iron rod found.

N 89°-56'-08" W, a distance of 841.52 feet to a 5/8 inch iron rod found.

THENCE, N 1°-06'-03" E, a distance of 345.94 feet to a 5/8 inch iron rod set.

THENCE, N 83°-00'-02" E, a distance of 750.42 feet to a 5/8 inch iron rod set.

THENCE, N 02°-34'-06" W, a distance of 290.57 feet to a 5/8 inch iron rod set.

THENCE, N 89°-18'-56" E, a distance of 166.63 feet to a 5/8 inch iron rod set.

THENCE, S 0°-16'-44" W, a distance of 1230.17 feet to a 5/8 inch iron rod set.

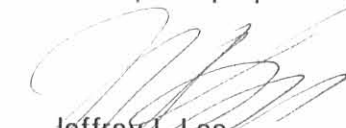
THENCE, S 89°-56'-32" E, a distance of 484.41 feet to a 5/8 inch iron rod set.

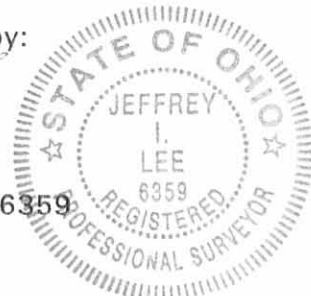
THENCE, S 0°-32'-17" W, a distance of 99.78 feet to the point of beginning, passing a 5/8 inch iron rod set 69.78 feet.

Containing 10.809 acres of which 0.035 acre is in the highway right-of-way.

The basis for bearings is based upon the west line of Section 17 being N 00°-00'-00" E, and all other bearings are from angles and distances measured in a field survey by Lee Surveying and Mapping Company on February 12, 1999.

Description prepared by:

  
Jeffrey I. Lee  
Professional Surveyor 6359  
February 15, 1999



L-2708

ORIGINAL STAMP IN GREEN

4956 10-7



REC'D 2-22-98 SMM OK W

# Lee Surveying and Mapping Co., Inc.



Land Surveys • Topography • Subdivisions • Construction Layout

117 N. Madriver Street  
Bellefontaine OH 43311

Phone: (937) 593-7335  
Fax: (937) 593-7444

## REILLY 11.478 ACRES TRACT H

Lying in Section 17, Town 3, Range 13, Miami Township, Logan County, Ohio.

Being out of the Corinne D. Reilly original 159.52 acre tract as deeded and described in Official Record 99, Page 794, Second Tract of the Logan County Records of Deeds and being more particularly described as follows:

Beginning at stone found at the intersection of the center-line of Township Road 71 (60 feet wide) and the east line of the northwest quarter of Section 17.

THENCE, with the center-line of Township Road 71, S 89°-49'-27" W, a distance of 120.02 feet to a MAG nail set at the TRUE POINT OF BEGINNING.

THENCE, with the center-line of Township Road 71, S 89°-49'-27" W, a distance of 419.74 feet to a MAG nail set.

THENCE, N 0°-32'-17" E, a distance of 99.78 feet to a 5/8 inch iron rod set, passing a 5/8 inch iron rod set at 30.00 feet.

THENCE, N 89°-56'-32" W, a distance of 484.41 feet to a 5/8 inch iron rod set.

THENCE, N 0°-16'-44" E, a distance of 497.39 feet to a 5/8 inch iron rod set.

THENCE, N 88°-51'-17" E, a distance of 905.38 feet to a 5/8 inch iron rod set.

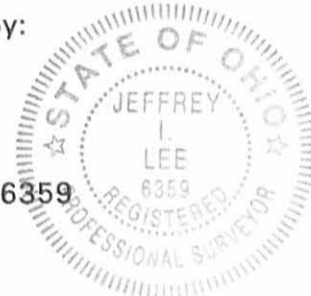
THENCE, S 0°-24'-40" W, a distance of 614.48 feet to the point of beginning, passing a 5/8 inch iron rod set 584.48 feet.

Containing 11.478 acres of which 0.289 acre is in the highway right-of-way.

The basis for bearings is based upon the west line of Section 17 being N 00°-00'-00" E, and all other bearings are from angles and distances measured in a field survey by Lee Surveying and Mapping Company on February 12, 1999.

Description prepared by:

Jeffrey I. Lee  
Professional Surveyor 6359  
February 15, 1999



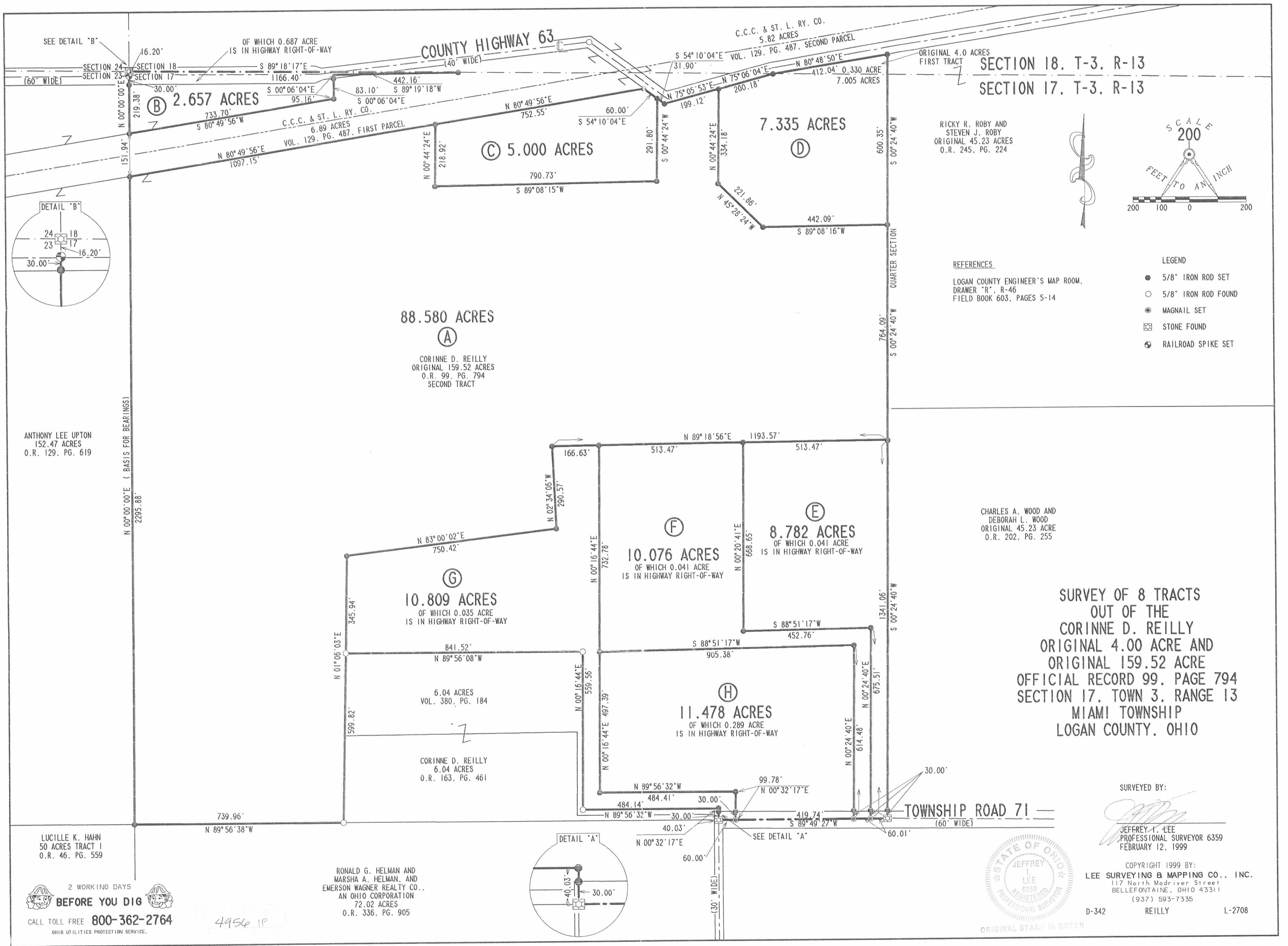
L-2708

ORIGINAL STAMP IN GREEN

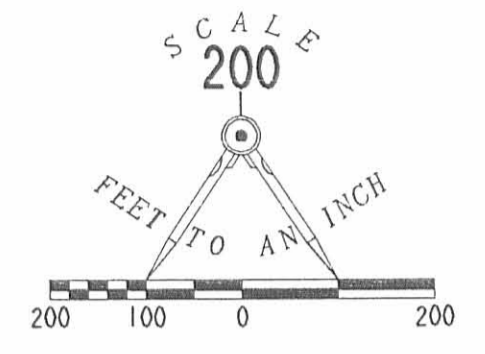
4956 1D-B



REC'D 2-22-98 SJM BK ✓



SECTION 18. T-3. R-13  
SECTION 17. T-3. R-13



RICKY R. ROBY AND  
STEVEN J. ROBY  
ORIGINAL 45.23 ACRES  
O.R. 245, PG. 224

REFERENCES  
LOGAN COUNTY ENGINEER'S MAP ROOM,  
DRAWER "R", R-46  
FIELD BOOK 603, PAGES 5-14

- LEGEND
- 5/8" IRON ROD SET
  - 5/8" IRON ROD FOUND
  - ⊙ MAGNAIL SET
  - ⊠ STONE FOUND
  - ⊕ RAILROAD SPIKE SET

CHARLES A. WOOD AND  
DEBORAH L. WOOD  
ORIGINAL 45.23 ACRE  
O.R. 202, PG. 255

**SURVEY OF 8 TRACTS  
OUT OF THE  
CORINNE D. REILLY  
ORIGINAL 4.00 ACRE AND  
ORIGINAL 159.52 ACRE  
OFFICIAL RECORD 99, PAGE 794  
SECTION 17, TOWN 3, RANGE 13  
MIAMI TOWNSHIP  
LOGAN COUNTY, OHIO**

SURVEYED BY:  
*Jeffrey I. Lee*  
JEFFREY I. LEE  
PROFESSIONAL SURVEYOR 6359  
FEBRUARY 12, 1999



COPYRIGHT 1999 BY:  
**LEE SURVEYING & MAPPING CO., INC.**  
117 North Madriver Street  
BELLEFONTAINE, OHIO 43311  
(937) 593-7335  
D-342 REILLY L-2708

ORIGINAL STAMP IN GREEN

ANTHONY LEE UPTON  
152.47 ACRES  
O.R. 129, PG. 619

**88.580 ACRES**  
**(A)**  
CORINNE D. REILLY  
ORIGINAL 159.52 ACRES  
O.R. 99, PG. 794  
SECOND TRACT

**2.657 ACRES**  
**(B)**

**5.000 ACRES**  
**(C)**

**7.335 ACRES**  
**(D)**

**10.076 ACRES**  
**(F)**  
OF WHICH 0.041 ACRE  
IS IN HIGHWAY RIGHT-OF-WAY

**8.782 ACRES**  
**(E)**  
OF WHICH 0.041 ACRE  
IS IN HIGHWAY RIGHT-OF-WAY

**10.809 ACRES**  
**(G)**  
OF WHICH 0.035 ACRE  
IS IN HIGHWAY RIGHT-OF-WAY

**11.478 ACRES**  
**(H)**  
OF WHICH 0.289 ACRE  
IS IN HIGHWAY RIGHT-OF-WAY

CORINNE D. REILLY  
6.04 ACRES  
O.R. 163, PG. 461

6.04 ACRES  
VOL. 380, PG. 184

LUCILLE K. HAHN  
50 ACRES TRACT 1  
O.R. 46, PG. 559

RONALD G. HELMAN AND  
MARSHA A. HELMAN, AND  
EMERSON WAGNER REALTY CO.,  
AN OHIO CORPORATION  
72.02 ACRES  
O.R. 336, PG. 905

2 WORKING DAYS  
**BEFORE YOU DIG**  
CALL TOLL FREE **800-362-2764**  
OHIO UTILITIES PROTECTION SERVICE.

4956 1P

TERREL SURVEY  
Sec.17 T-3 R-13  
MIAMI TOWNSHIP  
January 30, 1971

TRACT 1

The following described real estate situated in Miami Township,  
Logan County, Ohio and being part of the northwest 1/4 of Section  
17, Town 3, Range 13 of the Between the Miami Rivers Survey and  
more particularly described as follows:

Beginning at a stone in the center of Township Road No.71 at the  
northeast corner of Grace C. Eicher's 73.28 acre tract as shown in  
Logan County Engineers Field Book 608, page 68, said stone also  
being in the south line of said northwest 1/4 section; thence with  
the 1/4 section line N.84° 30'W. 1334.5 feet to an iron bar; thence  
N.6° 33'E. 306.1 feet to an iron bar; thence S.84° 30'E. 825.8  
feet to an iron bar; thence S.5° 44'W. 286.1 feet to an iron bar;  
thence S.84° 30'E., parallel with and 20.0 feet north of said 1/4  
section <sup>line</sup> 504.3 feet to an iron bar; thence S.5° 40'W. 20.0 feet  
to the place of beginning.

Containing 6.04 acres more or less.

The above described tract being part of Charles L. Terrel's 151.63  
acre tract.

4956 2D-1  
INDEXED ON MAP

TERREL SURVEY  
Sec.17 T-3 R-13  
MIAMI TOWNSHIP  
January 30, 1971

TRACT 2

The following described real estate situated in Miami Township, Logan County, Ohio and being part of the northwest 1/4 of Section 17, Town 3, Range 13 of the Between the Miami Rivers Survey and more particularly described as follows:

Commencing at a stone in the center of Township Road No.71 at the northeast corner of Grace C. Eicher's 73.28 acre tract as shown in Logan County Engineers Field Book 608, page 68, said stone also being in the south line of said northwest 1/4 section; thence N.5° 40'E. 20.0 feet to an iron bar, said iron bar being the beginning point of this description; thence N.84° 30'W. parallel with and 20.0 feet north of said 1/4 section line 504.3 feet to an iron bar; thence N.5° 44'E. 286.1 feet to an iron bar; thence N.84° 30'W. 825.8 feet to an iron bar; thence N.6° 33'E. 293.8 feet to an iron bar; thence S.84° 30'E. 841.6 feet to an iron bar; thence S.5° 51'W. 559.9 feet to an iron bar; thence S.84° 30'E. parallel with and 40.0 feet north of said 1/4 section line 484.3 feet to an iron bar; thence S.5° 40'W. 20.0 feet to the place of beginning.

Containing 6.04 acres more or less.

The above described tract being part of Charles L. Terrel's  
151.63 acre tract.

4956 2D-2  
INDEXED ON MAP

CHARLES L. TERRIL 137.59 AC.



N. 84° 30' E. 841.7'

S. 84° 30' E. 841.6'

7.02 AC.

6.04 AC.

S. 84° 30' E. 825.9'  
N. 84° 30' W. 825.8'

7.02 AC.

6.04 AC.

N. 6° 33' E. 306.1'

293.8'

S. 5° 44' W. 286.1'

293.8'

S. 5° 44' W. 559.9'

S. 84° 30' E. 484.3'

504.3'

STONE FOUND

504.3'

830.2'  
N. 84° 30' W. 1/4 SEC. LINE

GRACE C. EICHER 73.28 AC.

TERREL SURVEY  
SEC. 17 T-3 R-13  
MIAMI TOWNSHIP  
LOGAN COUNTY, OHIO  
JANUARY 30, 1971  
SCALE 1" = 100'  
O = 5/8" Ø BAR SET

DAN L. DODSON  
REG. SURVEYOR 4270  
BELLEFONTAINE, OHIO

15. T.R. 71  
S. 5° 44' W. 20'  
11 R.  
30' 30'

S-125

4956

S-125

REC'D 1-3-00 SMY OK ✓

# Lee Surveying and Mapping Co., Inc.

Land Surveys • Topography • Subdivisions • Construction Layout

117 N. Madriver St.  
Bellefontaine OH 43311



Phone: (937) 593-7335  
Fax: (937) 593-7444

## HELMAN 2.802 ACRES

Lying in Section 17, Town 3, Range 13, Miami Township, Logan County, Ohio.

Being out of the Ronald G. Helman, Marsha A. Helman and Emerson Wagner Realty Co., an Ohio Corporation, 5.000 acre tract as deeded and described in Official Record 404, Page 452, Tract C of the Logan County Records of Deeds and being more particularly described as follows:

Beginning at a 5/8 inch iron rod found on the north line of Section 17 at the intersection with the south right-of-way of County Highway 63 and on the north line of the Carl E. Lunsford Jr. 7.335 acre tract, (O.R. 421, Pg. 500)

THENCE, with the south right-of-way of County Highway 63, (40 feet wide), the following three (3) courses:

S 75°-06'-04" W, a distance of 200.18 feet to a 5/8 inch iron rod found.

S 75°-05'-53" W, a distance of 199.12 feet to a 5/8 inch iron rod found.

N 54°-10'-04" W, a distance of 31.90 feet to a 5/8 inch iron rod found at the TRUE POINT OF BEGINNING.

THENCE, with a westerly line of the Ronald G. Helman orig. 88.580 acre tract, (O.R. 404, Pg. 447, Tract A), S 0°-44'-24" W, a distance of 17.95 feet to a 5/8 inch iron rod set.

THENCE, S 80°-49'-56" W, a distance of 402.48 feet to a 5/8 inch iron rod set

THENCE, S 2°-25'-20" E, a distance of 215.69 feet to a 5/8 inch iron rod set.

THENCE, with the lines of the said original 88.580 acre tract, the following two (2) courses:

S 89°-08'-15" W, a distance of 406.00 feet to a 5/8 inch iron rod found.

N 0°-44'-24" E, a distance of 218.92 feet to a 5/8 inch iron rod found.

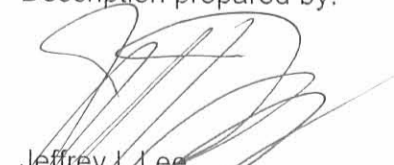
THENCE, with the south line of the C.C.C. & St. L. Ry. Co 6.89 acre tract, (Vol. 129, Pg. 487, First Parcel), N 80°-49'-56" E, a distance of 752.55 feet to a 5/8 inch iron rod found.

THENCE, with the southerly right-of-way of County Highway 63, S 54°-10'-04" E, a distance of 60.00 feet to the point of beginning.

Containing 2.802 acres.

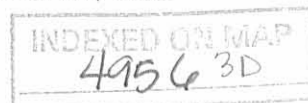
The basis for bearings is the right-of-way of County Highway 63 at the true point of beginning, being N 54°-10'-04" W, and all other bearings are from angles and distances measured in a field survey by Lee Surveying and Mapping Co., Inc. on December 9, 1999.

Description prepared by:

  
Jeffrey I. Lee  
Professional Surveyor 6359  
December 27, 1999



ORIGINAL STAMP IN GREEN



L-2708

COUNTY HIGHWAY 63 (40')

SECTION 18  
SECTION 17

C.C.C. & ST. L. RY. CO.  
5.82 ACRES  
VOL. 129, PG. 487, SECOND PARCEL

C.C.C. & ST. L. RY. CO.  
6.89 ACRES  
VOL. 129, PG. 487, FIRST PARCEL

(BASIS FOR BEARING)  
N 54° 10' 04" W  
31.90'

N 80° 49' 56" E  
752.55'

S 75° 06' 04" W  
200.18'

S 75° 05' 53" W  
199.12'

402.48'  
S 80° 49' 56" W

17.95'  
S 00° 44' 24" W

2.802 ACRES

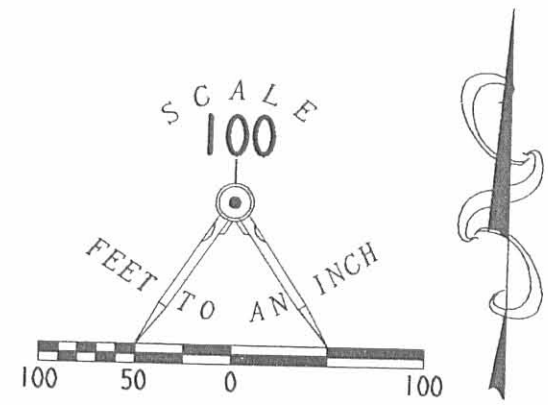
RONALD G. HELMAN  
MARSHA A. HELMAN AND  
EMERSON WAGNER REALTY CO.,  
AN OHIO CORPORATION  
5.000 ACRES  
O.R. 404, PG. 452  
TRACT C

CARL E. LUNSFORD, JR.  
7.335 ACRES  
O.R. 421, PG. 500

N 00° 44' 24" E  
218.92'

S 02° 25' 20" E  
215.69'

406.00'  
S 89° 08' 15" W



LEGEND

- 5/8 INCH IRON ROD SET
- 5/8 INCH IRON ROD FOUND

RONALD G. HELMAN  
MARSHA A. HELMAN AND  
EMERSON WAGNER REALTY CO.,  
AN OHIO CORPORATION  
ORIG. 88.580 ACRES  
O.R. 404, PG. 447  
TRACT A

SURVEY OF 2.802 ACRES OUT OF THE  
RONALD G. HELMAN, MARSHA A. HELMAN  
AND EMERSON WAGNER REALTY CO.,  
AN OHIO CORPORATION  
5.000 ACRE TRACT  
OFFICIAL RECORD 404, PAGE 452, TRACT C  
SECTION 17, TOWN 3, RANGE 13  
MIAMI TOWNSHIP  
LOGAN COUNTY, OHIO



ORIGINAL STAMP IN GREEN

SURVEYED BY  
*Jeffrey I. Lee*  
JEFFREY I. LEE  
PROFESSIONAL SURVEYOR 6359  
DECEMBER 9, 1999

COPYRIGHT 1999 BY:  
LEE SURVEYING & MAPPING CO., INC.  
117 North Madriver Street  
BELLEFONTAINE, OHIO 43311  
(937) 593-7335

D 366 HELMSC17

L-2708-3

2 WORKING DAYS  
**BEFORE YOU DIG**  
CALL TOLL FREE **800-362-2764**  
OHIO UTILITIES PROTECTION SERVICE.

INDEXED ON MAP  
4956 3P



REC'D 5-17-99 SMY DLV

# Lee Surveying and Mapping Co., Inc.



Land Surveys • Topography • Subdivisions • Construction Layout

117 N. Madriver Street  
Bellefontaine OH 43311

Phone: (937) 593-7335  
Fax: (937) 593-7444

## HELMAN 1.492 ACRES

Lying in Section 17, Town 3, Range 13, Miami Township, Logan County, Ohio.

Being out of the Ronald G. Helman, Marsha A. Helman and Emerson Wargner Realty Co. 10.809 acre tract as deeded and described in Official Record 404, Page 452, Tract G of the Logan County Records of Deeds and being more particularly described as follows:

Beginning at stone found at the intersection of the center-line of Township Road 71 (60 feet wide) and the east line of the northwest quarter of Section 17.

THENCE, with the center-line of Township Road 71, S 89°-49'-27" W, a distance of 539.76 feet to a MAG nail set at the TRUE POINT OF BEGINNING.

THENCE, with the center-line of Township Road 71, S 89°-49'-27" W, a distance of 60.00 feet to a stone found.

THENCE, with the lines of the Ronald G. Helman 6.04 acre tracts, (O.R. 404, Pg. 450, Tracts 1 and 2), N 0°-32'-17" E, a distance of 40.03 feet to a 5/8 inch iron rod set, passing a 5/8 inch iron rod set at 30.00 feet.

THENCE, with the lines of the said 6.04 acre tract, (O.R. 404, Pg. 450, Tract 2), the following two courses:

N 89°-56'-32" W, a distance of 484.14 feet to a 5/8 inch iron rod found.

N 0°-16'-44" E, a distance of 559.56 feet to a 5/8 inch iron rod found.

THENCE, S 87°-52'-11" E, a distance of 60.03 feet to a 5/8 inch iron rod set.

THENCE, with the lines of the Ronald G. Helman 11.478 acre tract, (O.R. 404, Pg. 447, Tract H), the following three courses:

S 0°-16'-44" W, a distance of 497.39 feet to a 5/8 inch iron rod set.

S 89°-56'-32" E, a distance of 484.41 feet to a 5/8 inch iron rod set.

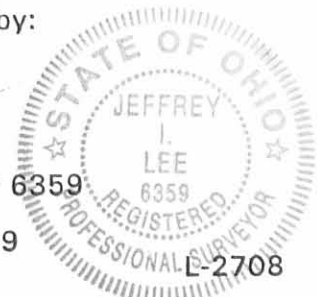
S 0°-32'-17" W, a distance of 99.78 feet to the point of beginning, passing a 5/8 inch iron rod set at 69.78 feet.

Containing 1.492 acres of which 0.035 acre is in the highway right-of-way.

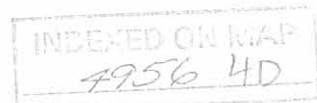
The basis for bearings is based upon the west line of Section 17 being N 00°-00'-00" E, and all other bearings are from angles and distances measured in a field survey by Lee Surveying and Mapping Company on February 12, 1999 and May 13, 1999.

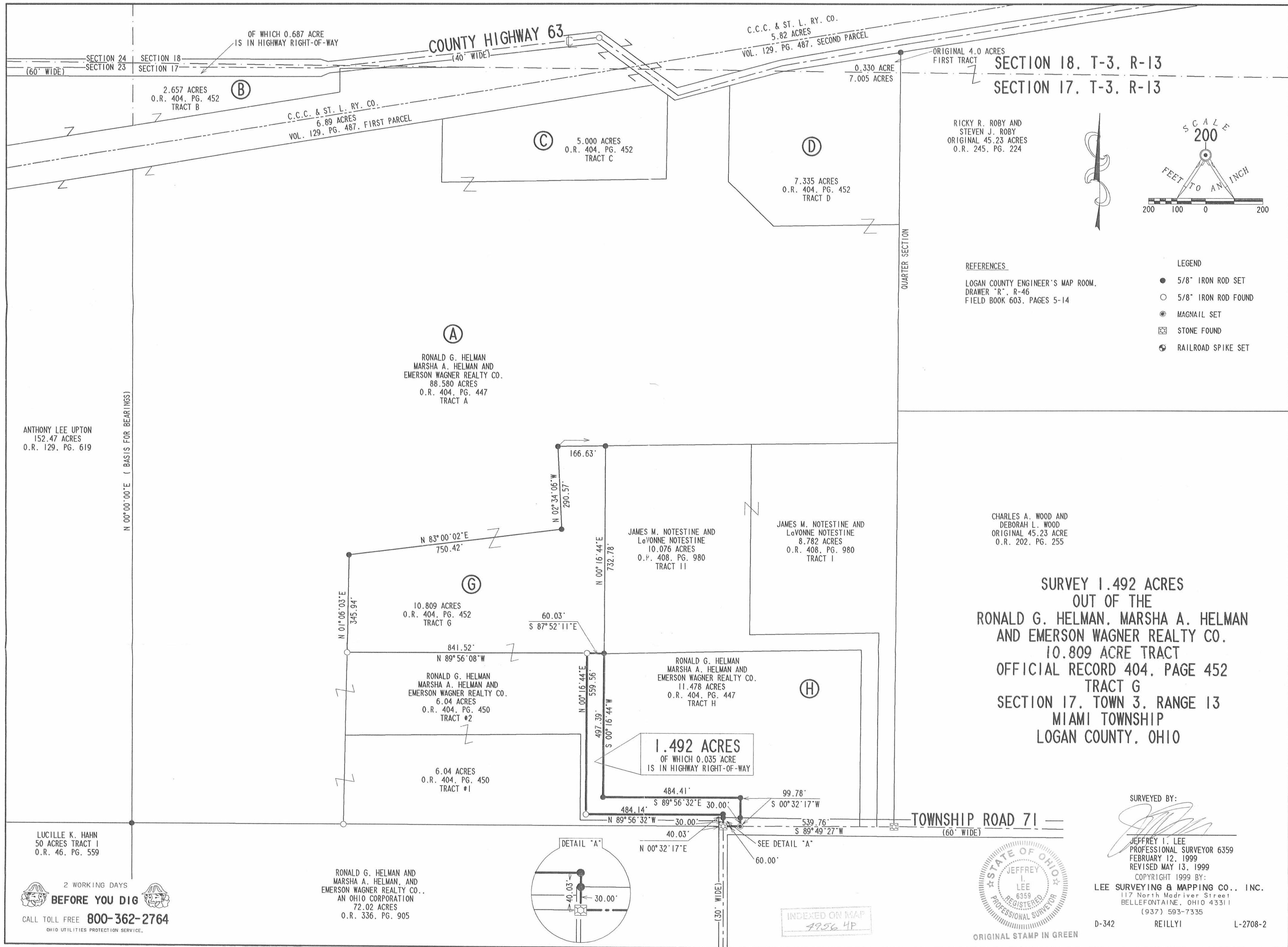
Description prepared by:

Jeffrey I. Lee  
Professional Surveyor 6359  
February 15, 1999  
Revised May 13, 1999



ORIGINAL STAMP IN GREEN







9-26-14



APPROVED



EDWARDS SURVEYING

110 South Main Street  
Urbana, Ohio 43078  
(937) 653-6508



**LEGAL DESCRIPTION FOR NOTESTINE'S 0.068 AC. TRACT**

Being situate in the State of Ohio, County of Logan, Township of Miami, and being a part of the Northwest Quarter of Section 17, Town 3, Range 13, B.T.M.R.S., and being more particularly described as follows:

Beginning for reference at a Mag Nail set over a Stone monument found at the intersection of the centerline of Township Road 71 (60' right-of-way) and the East line of the Northwest Quarter of Section 17;

thence with the centerline of Township Road 71, S-89°49'27"-W, 60.01'(feet) to a Mag Nail found at a Southwest corner of an 8.782 acre tract conveyed to James M. and LaVonne Notestine by Deed recorded in Official Record 408, Page 980, Tract 1, of the Logan County Records;

thence with a West line of said Notestine's 8.782 acre tract, N-0°24'40"-E, 640.51'(feet) to an iron bar set at the **PRINCIPLE PLACE OF BEGINNING** for the tract hereinafter described, passing for reference a 5/8" diameter iron bar found on the right-of-way line of Township Road 71 at 30.00'(feet);

thence S-88°51'17"-W, 85.00'(feet) to an iron bar set;

thence N-0°24'40"-E, 35.00'(feet) to an iron bar set on a line of aforementioned Notestine's 8.782 acre tract;

thence with the bounds of said Notestine's 8.782 acre tract the following two (2) courses:

1. N-88°51'17"-E, 85.00'(feet) to a 5/8" diameter iron bar found;
2. S-0°24'40"-W, 35.00'(feet) to the place of beginning.

Containing 0.068 acre but being subject to the rights of all legal highways and all easements of record.

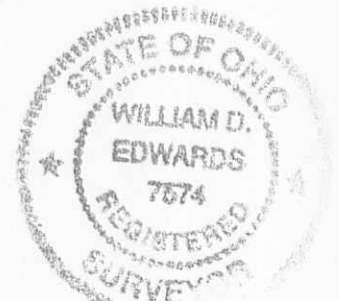
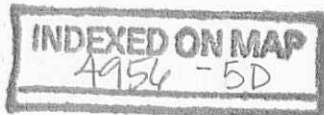
Being a part of a 10.076 acre tract conveyed to James A. and LaVonne Notestine by Deed recorded in Official Record 408, page 980, Tract 2, of the Logan County Records.

The herein described tract is to be attached to mentioned Notestine's adjoining 8.782 acre tract and is not to be used as a separate and independent parcel.

The foregoing description prepared by and in accordance with a Survey by William D. Edwards, Professional Surveyor No. 7574, September 22, 2014. All iron bars set are 5/8"x30" iron re-bar with a yellow plastic cap stamped "EDWARDS PS 7574". Bearings for the herein described tract are based on the centerline of Township Road 71 per Official Record 408, Page 980, Tract 1, of the Logan County Records. (S-89°49'27"-W)

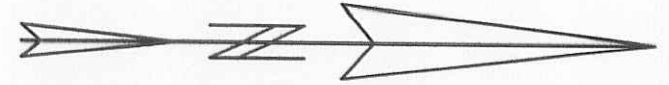
William D. Edwards

Professional Surveyor No. 7574



# PLAT OF SURVEY

MIAMI TOWNSHIP, LOGAN COUNTY COUNTY, OHIO  
 SECTION 17, TOWN 3, RANGE 13, B.T.M.R.S.



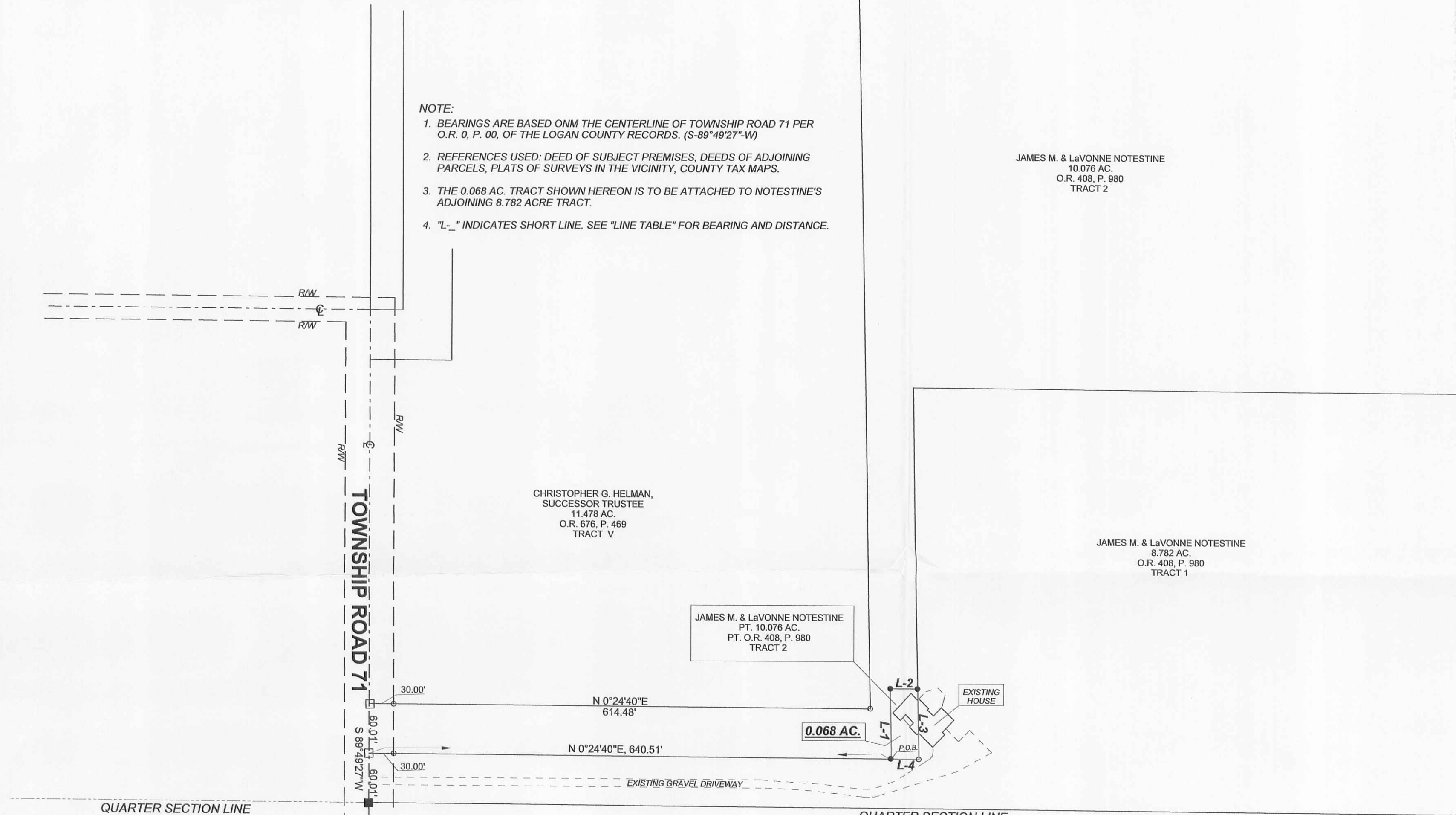
SCALE: 1" = 100'  
 -50 0 50 100 150

DATE: SEPTEMBER 22, 2014

- NOTE:
1. BEARINGS ARE BASED ONM THE CENTERLINE OF TOWNSHIP ROAD 71 PER O.R. 0, P. 00, OF THE LOGAN COUNTY RECORDS. (S-89°49'27"-W)
  2. REFERENCES USED: DEED OF SUBJECT PREMISES, DEEDS OF ADJOINING PARCELS, PLATS OF SURVEYS IN THE VICINITY, COUNTY TAX MAPS.
  3. THE 0.068 AC. TRACT SHOWN HEREON IS TO BE ATTACHED TO NOTESTINE'S ADJOINING 8.782 ACRE TRACT.
  4. "L-" INDICATES SHORT LINE. SEE "LINE TABLE" FOR BEARING AND DISTANCE.

JAMES M. & LaVONNE NOTESTINE  
 10.076 AC.  
 O.R. 408, P. 980  
 TRACT 2

CHRISTOPHER G. HELMAN,  
 SUCCESSOR TRUSTEE  
 88.580 AC.  
 O.R. 676, P. 469  
 TRACT IV



CHRISTOPHER G. HELMAN,  
 SUCCESSOR TRUSTEE  
 11.478 AC.  
 O.R. 676, P. 469  
 TRACT V

JAMES M. & LaVONNE NOTESTINE  
 8.782 AC.  
 O.R. 408, P. 980  
 TRACT 1

JAMES M. & LaVONNE NOTESTINE  
 PT. 10.076 AC.  
 PT. O.R. 408, P. 980  
 TRACT 2

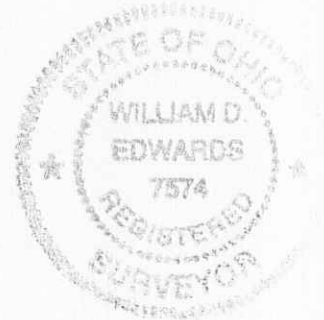
CHARLES A. & DEBORAH L. WOOD  
 ORIG. 45.23 AC.  
 O.R. 202, P. 255

QUARTER SECTION LINE

QUARTER SECTION LINE

LINE TABLE	
L-1.....	S-88°51'17"-W, 85.00'
L-2.....	N-0°24'40"-E, 35.00'
L-3.....	N-88°51'17"-E, 85.00'
L-4.....	S-0°24'40"-W, 35.00'

- LEGEND
- △— = RAILROAD SPIKE.....FOUND
  - = 5/8" DIA. IRON BAR.....FOUND
  - ∅— = 1" DIA. IRON PIPE.....FOUND
  - = MAG NAIL .....FOUND
  - = MAG NAIL OVER STONE MONUMENT.....SET
  - = 5/8"x30" IRON RE-BAR WITH YELLOW PLASTIC CAP STAMPED "EDWARDS PS 7574".....SET at grade



SURVEYED BY: *W.D. Edwards*  
 WILLIAM D. EDWARDS  
 PROFESSIONAL SURVEYOR No. 7574  
 110 SOUTH MAIN STREET  
 URBANA, OHIO 43078  
 (937)653-6508

5336.ZAK

INDEXED ON MAP  
 4156-5P