

REV'D 10-31-07 smy ok

Lee Surveying and Mapping Co., Inc.

Land Surveys • Topography • Subdivisions • Construction Layout

117 N. Madriver St.
Bellefontaine OH 43311



Phone: (937) 593-7335
Fax: (937) 593-7444

FARLEY 3.185 ACRES

Lying in Section 34, Town 4, Range 13, Miami Township, Logan County, Ohio.

Being out of the Robert A. Farley and Connie K. Farley 36 acre tract and original 100 acre tract as deeded and described in Official Record 80, Page 358 and Official Record 319, Page 991 of the Logan County Records of Deeds and being more particularly described as follows:

Commencing on a 1 inch iron rod found at P.I. Station 40+45.1 (Logan County Engineer's Field Book 700, Page 3) of County Highway 62 on the east line of Section 34, the east line of Miami Township and the west line of Union Township.

THENCE, with the center-line of County Highway 62 (60 feet wide), the east line of Section 34, the east line of Miami Township and the west line of Union Township, S 4°-29'-33"W, a distance of 2069.22 feet to a railroad spike set at the TRUE POINT OF BEGINNING.

THENCE, with the center-line of County Highway 62, the east line of Section 34, the east line of Miami Township and the west line of Union Township, S 4°-29'-33"W, a distance of 150.00 feet to a railroad spike set, passing a railroad spike set at 75.00 feet.

THENCE, N 85°-30'-26"W, a distance of 30.00 feet to a 5/8 inch iron rod set on the west right-of-way of County Highway 62.

THENCE, with the west right-of-way of County Highway 62, N 4°-29'-33"E, a distance of 63.10 feet to a 5/8 inch iron rod set.

THENCE, N 89°-05'-36"W, a distance of 81.10 feet to a 5/8 inch iron rod set.

THENCE, S 82°-26'-23"W, a distance of 145.23 feet to a 5/8 inch iron rod set.

THENCE, S 67°-38'-13"W, a distance of 136.21 feet to a 5/8 inch iron rod set.

THENCE, N 83°-00'-53"W, a distance of 202.20 feet to a 5/8 inch iron rod set.

THENCE, N 76°-56'-29"W, a distance of 358.80 feet to a 5/8 inch iron rod set.

THENCE, N 72°-48'-02"W, a distance of 140.55 feet to a 5/8 inch iron rod set.

THENCE, N 81°-47'-46"W, a distance of 285.29 feet to a 5/8 inch iron rod set.

THENCE, N 75°-29'-26"W, a distance of 300.00 feet to a 5/8 inch iron rod set.

THENCE, N 4°-29'-42"E, a distance of 363.00 feet to a 5/8 inch iron rod set.

THENCE, S 75°-29'-26"E, a distance of 300.00 feet to a 5/8 inch iron rod set.

THENCE, with the west line of the James R. McDonald 13.00 acre tract (O.R. 583, Pg. 19) and west line extended, S 4°-29'-42"W, a distance of 342.96 feet to a 5/8 inch iron rod set.

THENCE, S 81°-47'-46"E, a distance of 288.15 feet to a 5/8 inch iron rod set.

THENCE, S 72°-48'-02"E, a distance of 141.40 feet to a 5/8 inch iron rod set.

THENCE, S 76°-56'-29"E, a distance of 357.02 feet to a 5/8 inch iron rod set.

INDEXED ON MAP
4957 | D-1

Lee Surveying and Mapping Co., Inc.

Land Surveys • Topography • Subdivisions • Construction Layout

117 N. Madriver St.
Bellefontaine OH 43311



Phone: (937) 593-7335
Fax: (937) 593-7444

THENCE, S 83°-00'-53"E, a distance of 195.90 feet to a 5/8 inch iron rod set.

THENCE, N 67°-38'-13"E, a distance of 133.57 feet to a 5/8 inch iron rod set.

THENCE, N 82°-26'-23"E, a distance of 149.31 feet to a 5/8 inch iron rod set.

THENCE, S 89°-05'-36"E, a distance of 83.83 feet to a 5/8 inch iron rod set on the west right-of-way of County Highway 62.

THENCE, with the west right-of-way of County Highway 62, N 4°-29'-33"E, a distance of 66.86 feet to a 5/8 inch iron rod set.

THENCE, S 85°-30'-26"E, a distance of 30.00 feet to the point of beginning.

Containing 3.185 acres, of which 0.103 acre is within the highway right-of-way.

The basis for bearings is the east line of Section 34, being S 4°-29'-33"W, and all other bearings are from angles and distances measured in a field survey by Lee Surveying and Mapping Co., Inc. on September 26, 2007.

Description prepared by:

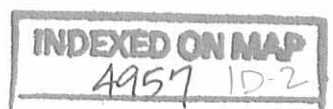
A handwritten signature in black ink that reads "William K. Bruce". The signature is written in a cursive, flowing style.

William K. Bruce
Professional Surveyor 7437
September 27, 2008



ORIGINAL STAMP IN GREEN

2848087



REV'D 10-31-07 SMY OK

Lee Surveying and Mapping Co., Inc.

Land Surveys • Topography • Subdivisions • Construction Layout

117 N. Madriver St.
Bellefontaine OH 43311



Phone: (937) 593-7335
Fax: (937) 593-7444

FARLEY 20.00 FEET WIDE INGRESS/EGRESS EASEMENT

Lying in Section 34, Town 4, Range 13, Miami Township, Logan County, Ohio.

Being a 20.00 feet wide ingress/egress easement over the Robert A. Farley and Connie K. Farley 36 acre tract as deeded and described in Official Record 80, Page 358 of the Logan County Records of Deeds and being more particularly described as follows:

Commencing on a 1 inch iron rod found at P.I. Station 40+45.1 (Logan County Engineer's Field Book 700, Page 3) of County Highway 62 on the east line of Section 34, the east line of Miami Township and the west line of Union Township.

THENCE, with the center-line of County Highway 62 (60 feet wide), the east line of Section 34, the east line of Miami Township and the west line of Union Township, S 4°-29'-33"W, a distance of 2069.22 feet to a railroad spike set.

THENCE, with the center-line of County Highway 62, the east line of Section 34, the east line of Miami Township and the west line of Union Township, S 4°-29'-33"W, a distance of 64.98 feet to a point at the TRUE POINT OF BEGINNING.

THENCE, with the center-line of County Highway 62, the east line of Section 34, the east line of Miami Township and the west line of Union Township, S 4°-29'-33"W, a distance of 20.04 feet to a point, passing a railroad spike set at 10.02 feet.

THENCE, N 89°-05'-36"W, a distance of 30.06 feet to a 5/8 inch iron rod set.

THENCE, N 89°-05'-36"W, a distance of 81.10 feet to a 5/8 inch iron rod set.

THENCE, S 82°-26'-23"W, a distance of 145.23 feet to a 5/8 inch iron rod set.

THENCE, S 67°-38'-13"W, a distance of 136.21 feet to a 5/8 inch iron rod set.

THENCE, N 83°-00'-53"W, a distance of 202.20 feet to a 5/8 inch iron rod set.

THENCE, N 76°-56'-29"W, a distance of 358.80 feet to a 5/8 inch iron rod set.

THENCE, N 72°-48'-02"W, a distance of 140.55 feet to a 5/8 inch iron rod set.

THENCE, N 81°-47'-46"W, a distance of 285.29 feet to a 5/8 inch iron rod set.

THENCE, with an east line of the Robert A. Farley and Connie K. Farley original 100 acre tract (O.R. 319, Pg. 991), N 4°-29'-42"E, a distance of 20.04 feet to a 5/8 inch iron rod set.

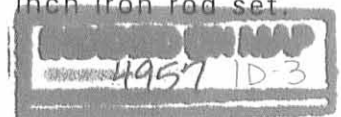
THENCE, S 81°-47'-46"E, a distance of 288.15 feet to a 5/8 inch iron rod set.

THENCE, S 72°-48'-02"E, a distance of 141.40 feet to a 5/8 inch iron rod set.

THENCE, S 76°-56'-29"E, a distance of 357.02 feet to a 5/8 inch iron rod set.

THENCE, S 83°-00'-53"E, a distance of 195.90 feet to a 5/8 inch iron rod set.

THENCE, N 67°-38'-13"E, a distance of 133.57 feet to a 5/8 inch iron rod set.



Lee Surveying and Mapping Co., Inc.

Land Surveys • Topography • Subdivisions • Construction Layout

117 N. Madriver St.
Bellefontaine OH 43311



Phone: (937) 593-7335
Fax: (937) 593-7444

THENCE, N 82°-26'-23"E, a distance of 149.31 feet to a 5/8 inch iron rod set.

THENCE, S 89°-05'-36"E, a distance of 83.83 feet to a 5/8 inch iron rod set on the west right-of-way of County Highway 62.

THENCE, S 89°-05'-36"E, a distance of 30.06 feet to the point of beginning.

The basis for bearings is the east line of Section 34, being S 4°-29'-33"W, and all other bearings are from angles and distances measured in a field survey by Lee Surveying and Mapping Co., Inc. on September 26, 2007.

Description prepared by:

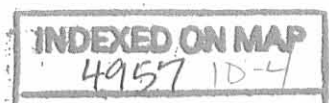
A handwritten signature in black ink that reads "William K. Bruce".

William K. Bruce
Professional Surveyor 7437
September 27, 2008

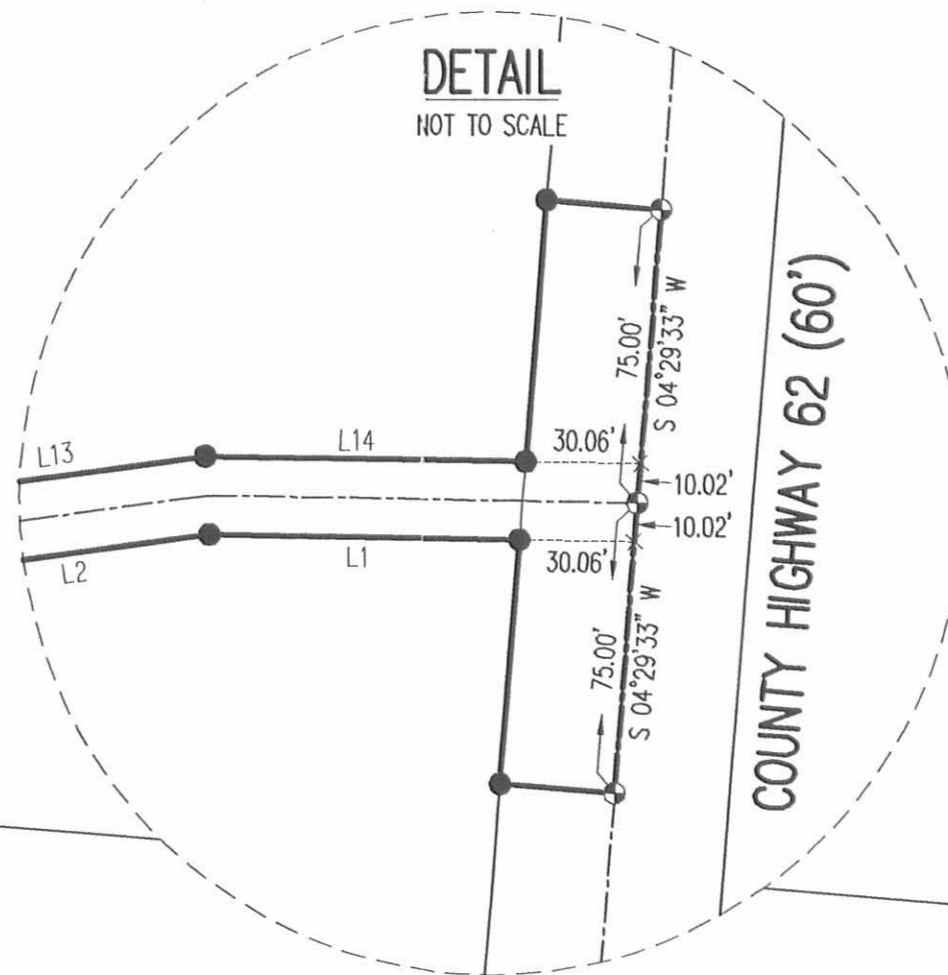
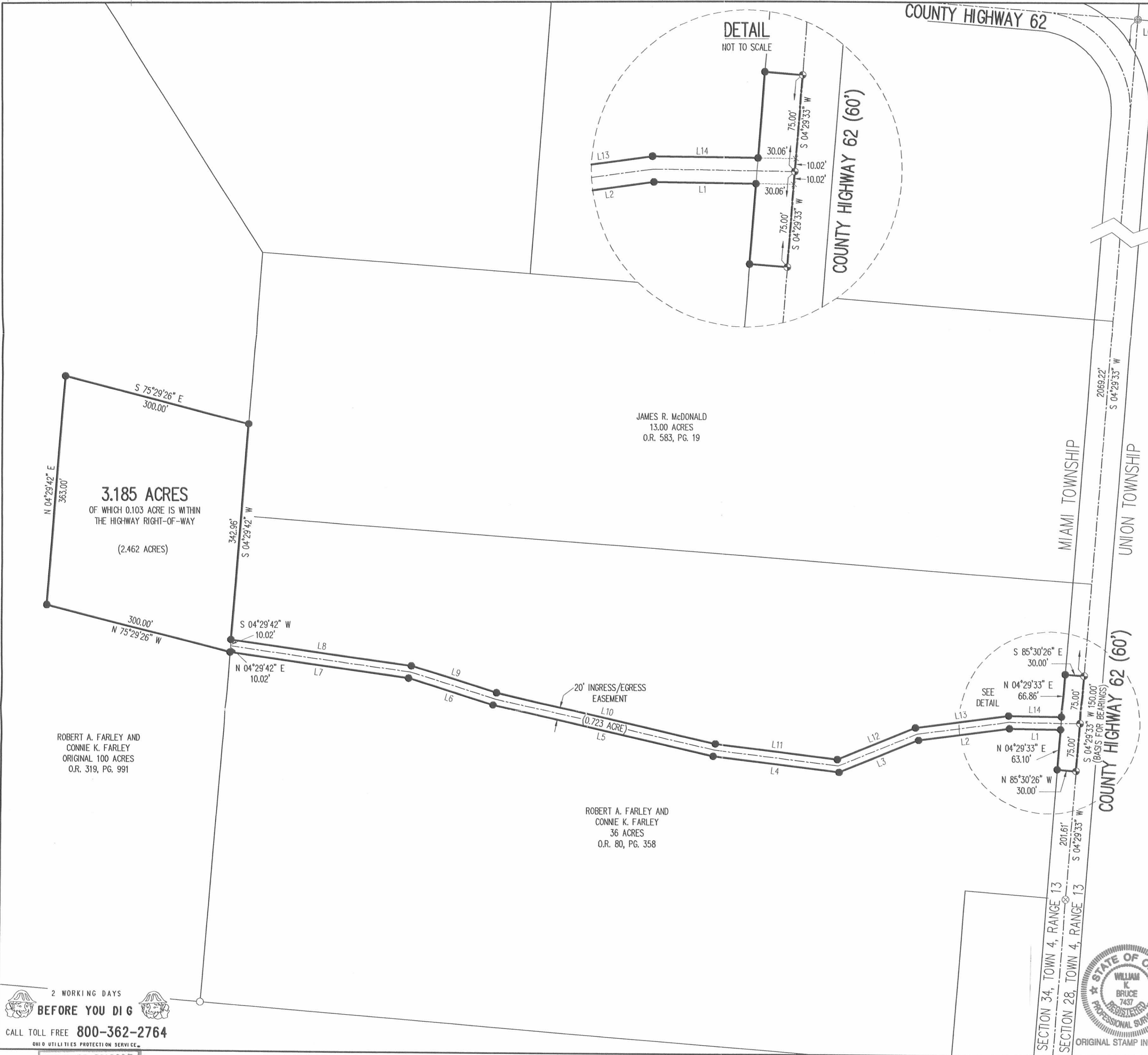


ORIGINAL STAMP IN GREEN

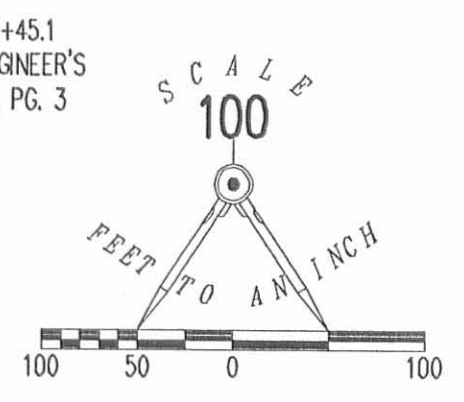
2848087



REV'D 10-31-07 SWM DM



P.I. STATION 40+45.1
LOGAN COUNTY ENGINEER'S
FIELD BOOK 700, PG. 3



- LEGEND:
- ⊕ 1 INCH IRON ROD FOUND
 - ⊗ RAILROAD SPIKE FOUND
 - ⊕ RAILROAD SPIKE SET
 - 5/8 INCH IRON ROD SET
 - 5/8 INCH IRON ROD FOUND

LINE	BEARING	DISTANCE
L1	N 89°05'36" W	81.10'
L2	S 82°26'23" W	145.23'
L3	S 67°38'13" W	136.21'
L4	N 83°00'53" W	202.20'
L5	N 76°56'29" W	358.80'
L6	N 72°48'02" W	140.55'
L7	N 81°47'46" W	285.29'
L8	S 81°47'46" E	288.15'
L9	S 72°48'02" E	141.40'
L10	S 76°56'29" E	357.02'
L11	S 83°00'53" E	195.90'
L12	N 67°38'13" E	133.57'
L13	N 82°26'23" E	149.31'
L14	S 89°05'36" E	83.83'

JAMES R. McDONALD
13.00 ACRES
O.R. 583, PG. 19

3.185 ACRES
OF WHICH 0.103 ACRE IS WITHIN
THE HIGHWAY RIGHT-OF-WAY
(2.462 ACRES)

ROBERT A. FARLEY AND
CONNIE K. FARLEY
ORIGINAL 100 ACRES
O.R. 319, PG. 991

ROBERT A. FARLEY AND
CONNIE K. FARLEY
36 ACRES
O.R. 80, PG. 358

**SURVEY OF 3.185 ACRES OUT OF THE
ROBERT A. FARLEY AND
CONNIE K. FARLEY
36 ACRE TRACT AND
ORIGINAL 100 ACRE TRACT
OFFICIAL RECORD 80, PAGE 358
OFFICIAL RECORD 319, PAGE 991
SECTION 34, TOWN 4, RANGE 13
MIAMI TOWNSHIP
LOGAN COUNTY, OHIO**

SURVEYED BY:

William K. Bruce
WILLIAM K. BRUCE
PROFESSIONAL SURVEYOR 7437
SEPTEMBER 26, 2007



COPYRIGHT 2007 BY:
LEE SURVEYING & MAPPING CO., INC.
117 North Madriver Street
BELLEFONTAIN, OHIO 43311
(937) 593-7335
surveys@lsmcinc.us

KSS D0907 2848087 L-2848-2

2 WORKING DAYS
BEFORE YOU DIG
CALL TOLL FREE **800-362-2764**
OHIO UTILITIES PROTECTION SERVICE

INDEXED ON MAP
4957 IF

1
LONGBRAKE SURVEY

Received 11-17-87

MAP ROOM
OK (CR)

The following described real estate situated in the Township of Miami, County of Logan, State of Ohio and being a part of the southeast quarter of Section 34, Town 4, Range 13, Between the Miami Rivers Survey and being a part of Dean A. and Judith E. Longbrake's present 37.00 Acre tract as recorded in Deed Volume 346 Pages 80-81 (4-6-1973) and being a part of Permanent Parcel No. 25-132-00-00-030 and being more particularly described as follows:

Beginning at an 1 inch Bronze Shaft found at the southeast corner to Section 34 and being Station No. 13 + 50.4 of the survey of C. H. No. 62 as recorded in Logan County Engineer's Field Book No. 700 Page 2 and being on the Line between Champaign and Logan Counties, and being the southeast corner to Miami Township and the southwest corner to Union Township and being the southeast corner to the 37.00 Acre tract as above mentioned;

Thence with the south line of Section 34 and the County Line and the south line of said 37.00 Acre tract, N. 89° 55' W. 158.40 feet to a 5/8" x 30" Rebar set, passing through a County Line monument at 20.00 feet;

Thence with a line parallel to the east line of said Section, North 275.00 feet to a 5/8" x 30" Rebar set;

Thence with a line parallel to the south line of said Section, S. 89° 55' E. 158.40 feet to a R. R. Spike set in the east line of said Section, passing through a 5/8" x 30" Rebar set at 128.40 feet;

Thence with the east line of said Section, which is also the line between Miami and Union Townships, South 275.00 feet (this line is the basis of bearing for this survey) to the place of beginning, containing 43,560.00 square feet or 1.00 Acre, more or less.

Of the above described tract, there is 8,250.00 square feet or 0.189 Acres in the right of way of C. H. No. 62.

I hereby certify that the above description is the result of a field survey made by me on November 11, 1987.



Daniel E. Gilbert

Daniel E. Gilbert, P.S.
Reg. Sur. No. 5402
400 N. Park St.
Bellefontaine, Ohio 43311

INDEXED ON MAP
4957 2D

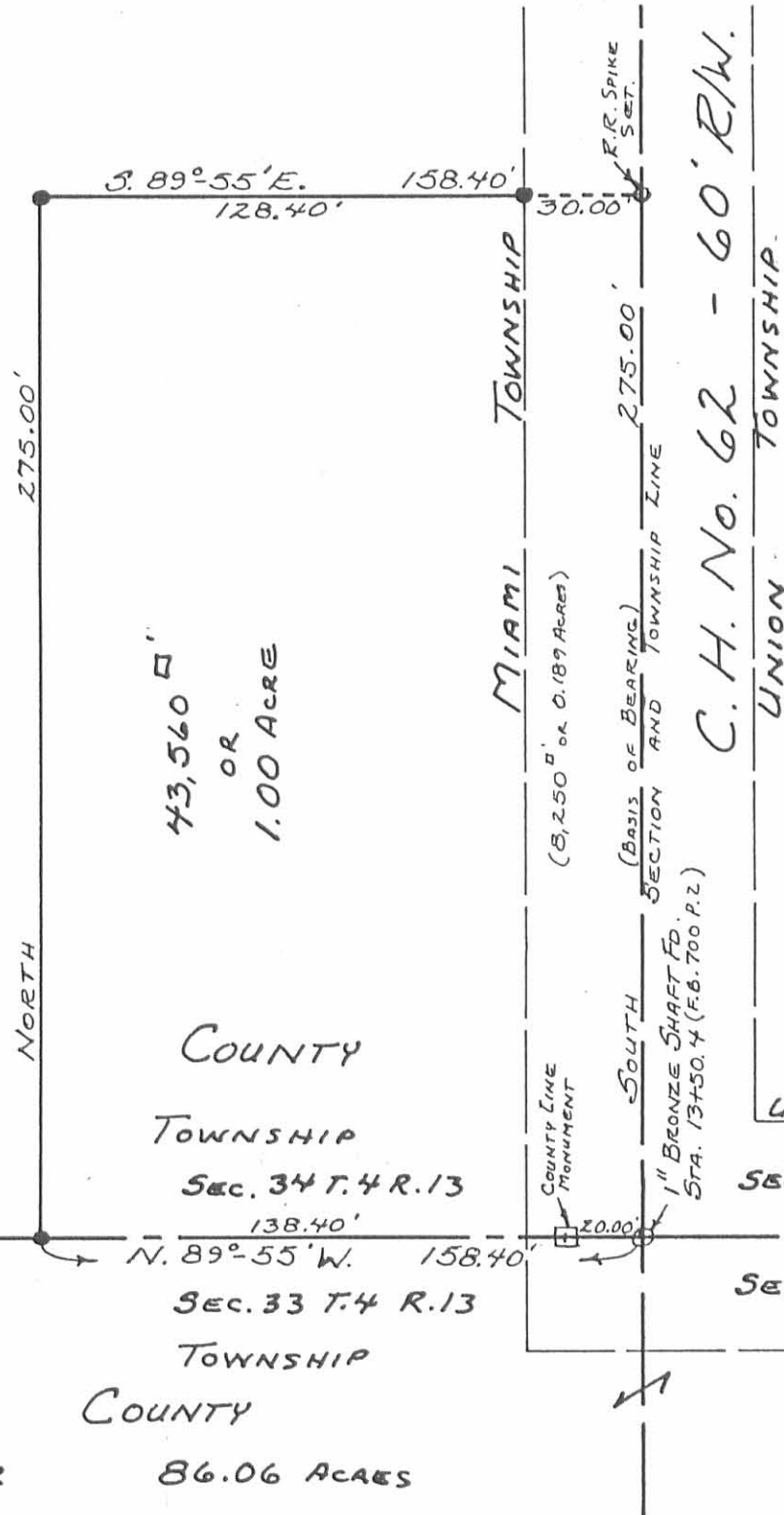
DEAN A. LONGBRAKE ET UX
 Vol. 346 P. 80-81 (4-6-1973)

PER. PAR. No. 25-132-00-00-030

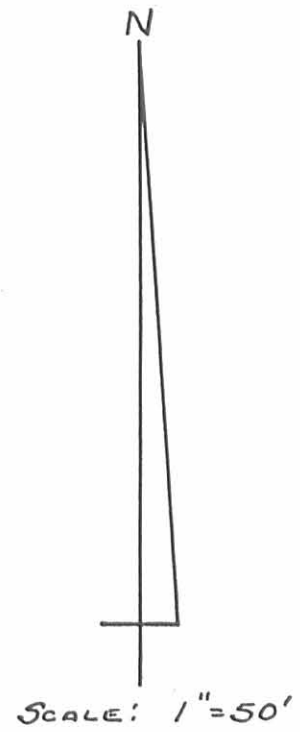
37.00 ACRES
 - 1.00

 36.00 ACRES

● - 5/8" x 30" REBARS SET.



43,560 sq'
 OR
 1.00 ACRE



LOGAN

COUNTY

MIAMI

TOWNSHIP

SEC. 34 T. 4 R. 13

COUNTY

SECTION

N. 89°-55' W. 158.40'

SEC. 33 T. 4 R. 13

HARRISON

TOWNSHIP

CHAMPAIGN

COUNTY

PAULINE PHENEGAR

86.06 ACRES

SEC. 28 T. 4 R. 13

SEC. 27 T. 4 R. 13

39.00 ACRES

Daniel E. Gilbert
 DANIEL E. GILBERT, P.S.
 REG. SUR. No. 5402
 400 N. PARK ST.
 BELLEFONTAINE, OHIO
 43311



Longbrake Survey
 SECTION 34 T. 4 R. 13 BMRS
 MIAMI TOWNSHIP
 LOGAN COUNTY, OHIO

NOVEMBER 11, 1987

INDEXED ON MAP
 49572P

LESLIE H. GEESLIN

REGISTERED SURVEYOR 5248

P. O. BOX 274

RUSHSVLVANIA, OHIO 43347

TELEPHONE: (937) 468-2793

FAX: (937) 468-2080

SNAPP SURVEY

November 4, 1998

The following described real estate situated in the State of Ohio, County of Logan Township of Miami, being part of Section 34, Town 4, Range 13, M. R. S., and more particularly described as follows:

Beginning at a magnetic nail set in the centerline of County Highway 62 that is S. 85° 00' 00" E. 556.57 feet from a magnetic nail found at the northeast corner of Samuel E. Harpest, etal's 59.27 acre tract as described in D. B. Vol. 391 Page 781.

Thence with the centerline of said C. H. 62 S. 85° 00' 00" E. 229.46 feet to a magnetic nail set.

Thence S. 8° 13' 11" W. 380.28 feet to a 5/8 inch iron bar set, passing a 5/8 inch iron bar set at 30.05 feet.

Thence N. 85° 00' 00" W. 229.46 feet to a 5/8 inch iron bar set.

Thence N. 8° 13' 11" E. 380.28 feet to the place of beginning, passing a 5/8 inch iron bar set at 350.23 feet.

Containing 2.000 acres more or less, of which 0.158 acre is in the right of way of C. H. 62.

The above described 2.000 acre tract being part of Kerry L. Snapp etal's 23.976 acre tract as described in O. R. 363 Page 957.

Bearings are based on an assumed bearing (S. 85° 00' 00" E.) for the centerline of C. H. 62 in this field survey by Leslie H. Geeslin, Reg. Surveyor # 5248 on November 4, 1998.

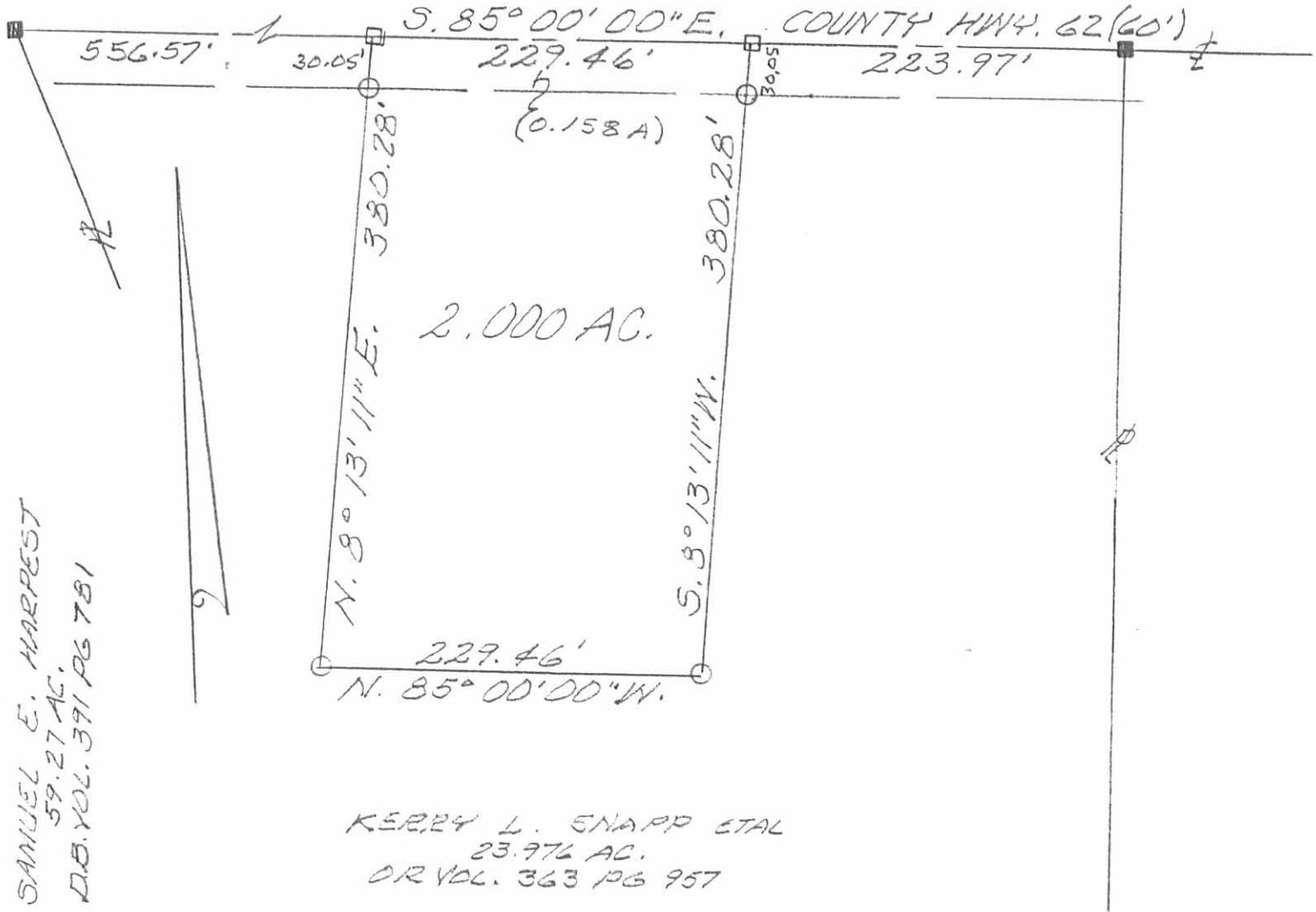


MIAMI24\SNAPP.SAM

INDEXED ON MAP
4957 3D

A handwritten signature in cursive script that reads "Leslie H. Geeslin".

SAMUEL E. HARPEST
 59.27 AC.
 D.B. VOL. 371 PG 781



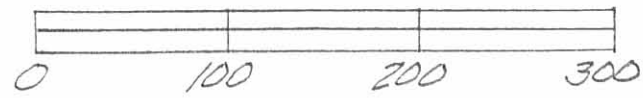
KERRY L. SNAPP ETAL
 23.976 AC.
 OR VOL. 363 PG 957

SURVEY OF 2.00 ACRE TRACT
 IN SECTION 34, TOWN 4, RANGE 13, MRS. 1
 MIAMI TOWNSHIP, LOGAN COUNTY, OHIO
 FOR KERRY SNAPP.

NOVEMBER 4, 1998
 SCALE: 1"=100'

LEGEND

- = MAG. NAIL SET
- = MAG. NAIL FOUND
- = 5/8" IRON BAR SET



4957 3P

Leslie H. Geeslin
 LESLIE H. GEESLIN
 RUSHLYANIA, OHIO
 PH 937-268-2793

Ropp Description
December 1971

Being situated in Miami Township, Logan County, Ohio; and
being a part of Section 34, Town 4, Range 13.

Beginning at the southeast corner of Section 34.

Thence with the south line of Section 34 (also the line between
Logan and Champaign Counties.) $N 89^{\circ} - 55'$ W 1355.5 feet to an iron.

Thence North 1188.0 feet to an iron.

Thence East 1355.5 feet to an iron in the east line of Section 34.

Thence with the east line of Section 34 (also the line between
Miami and Union Townships and also the center of County Road 62)
South 1190.0 feet to the place of beginning.

Containing 37.00 acres more or less. Being surveyed from
a 137.00 acre tract.

Owen E. Shirk
Surveyor 4271

INDEXED ON MAP
4957 4D

ROPP SURVEY

MIAMI TOWNSHIP, LOGAN COUNTY, OHIO
SECTION 34, TOWN 4, RANGE 13
1" = 300' - • DENOTES IRONS



Owen K. Shirk
Surveyor 4271
Surveyed: 12-22-71

INDEXED ON MAP
4957 4P

LESLIE H. GEESLIN

REGISTERED SURVEYOR 5248

P. O. BOX 274

RUSHSVLVANIA, OHIO 43347

TELEPHONE: (937) 468-2793

FARLEY SURVEY

March 5, 1998

The following described real estate situated in the State of Ohio, County of Logan, Township of Miami, being part of Section 34, Town 4, Range 13, M. R. S. and more particularly described as follows:

Beginning at a 5/8 inch iron bar found in the centerline of County Highway 62 at the northeast corner of Scott C. and Jill R. Hepner's 13.00 acre tract as described in O. R. Vol. 305 pages 500-502.

Thence with said Hepner's north line N. 85° 01' 08" W. 928.66 feet to a 5/8 inch iron bar set, passing a 5/8 inch iron bar set at 30.00 feet.

Thence N. 4° 58' 21" E. 1506.03 feet to a magnetic nail set in the centerline of said C. H. 62, passing a 5/8 inch iron bar set at 1476.03 feet.

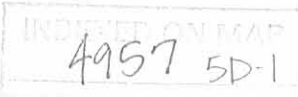
Thence with the centerline of said C. H. 62 S. 85° 00' 00" E. 928.66 feet to a 1 inch iron bar found.

Thence again with the centerline of said C. H. 62 S. 4° 58' 21" W. 1505.73 feet to the place of beginning.

Containing 32.104 acres more or less of which 1.656 acre is in the right of way of County Highway 62.

The above described 32.104 acre tract being part of Robert A. and Connie K. Farley's 100.00 acre tract as described in O. R. Vol. 319 Page 991.

Bearings are based on an assumed bearing (S. 85° 00' 00" E.) for the centerline of County Highway 62 in this field survey by Leslie H. Geeslin, Reg. Surveyor 5248 on March 5, 1998.



Leslie H. Geeslin

LESLIE H. GEESLIN

REGISTERED SURVEYOR 5248

P. O. BOX 274

RUSHSVLVANIA, OHIO 43347

TELEPHONE: (937) 468-2793

FARLEY SURVEY

March 5, 1998

The following described real estate situated in the State of Ohio, County of Logan, Township of Miami, being part of Section 34, Town 4, Range 13, M. R. S. and more particularly described as follows:

Beginning at a 5/8 inch iron bar found at the northwest corner of Scott C. and Jill R. Hepner's 13.00 acre tract as described in O. R. Vol. 305 pages 500-502.

Thence N. 10° 55' 46" W. 479.09 feet to a 12 inch concrete post found at the southeast corner of Samuel Eugene and Annette Suzann Harpest's 59.27 acre tract as described in D. B. Vol. 391 page 781.

Thence with said Harpest's east line N. 18° 30' 01" W. 1140.03 feet to a magnetic nail set in the centerline of County Highway 62, passing a R. R. tie post found at 1107.33 feet.

Thence with the centerline of said C. H. 62 S. 85° 00' 00" E. 1010.00 feet to a magnetic nail set.

Thence S. 4° 58' 21" W. 1506.03 feet to a 5/8 inch iron bar set in said Hepner's north line, passing a 5/8 inch iron bar set at 30.00 feet.

Thence with said Hepner's north line N. 85° 01' 08" W. 424.64 feet to the place of beginning.

Containing 23.976 acres more or less of which 0.696 acre is in the right of way of County Highway 62.

The above described 23.976 acre tract being part of Robert A. and Connie K. Farley's 100.00 acre tract as described in O. R. Vol. 319 Page 991.

Bearings are based on an assumed bearing (S.85° 00' 00" E.) for the centerline of County Highway 62 in this field survey by Leslie H. Geeslin, Reg. Surveyor 5248 on March 5, 1998.



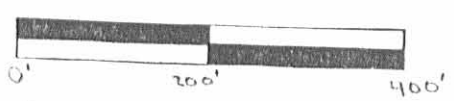
MIAMI\24\FARLEY5.SAM

INDEXED ONLINE
49575D-2

Leslie H. Geeslin



ROBERT A. FARLEY
 AND
 CONNIE K. FARLEY
 100.50 ACRES
 O.R. Vol 319 PAGE 491



SCALE: 1" = 200'

LEGEND:

- = MAG. NAIL SET
- ⊙ = 1" IRON BAR FO.
- = 5/8" IRON BAR FO.
- = R/R TIE POST FO.
- △ = 12" CONC POST FO.
- = 5/8" IRON BAR SET

SURVEY OF 23.976 ACRES AND
 32.104 ACRES IN SECTION 34,
 TOWN 4, RANGE 13, M.R.S., MIAMI
 TOWNSHIP, LOGAN COUNTY, OHIO
 FOR ROBERT FARLEY ON
 MARCH 5, 1998



Leslie H. Geslin
 LESLIE H. GESLIN
 RUSHLUANIA, OHIO
 PH: (737) 468-2793
 (D.L.G.)

INDEXED ON MAP
 4957 5P

Lee Surveying and Mapping Co., Inc.

Land Surveys • Topography • Subdivisions • Construction Layout

117 N. Madriver St.
Bellefontaine OH 43311



Phone: (937) 593-7335
Fax: (937) 593-7444

ECKART 6.396 ACRES TRACT A

Lying in Section 34, Town 4, Range 13, Miami Township, Logan County, Ohio.

Being out of the Roger C. Eckart and Patricia L. Eckart 32.104 acre tract as deeded and described in Official Record 431, Page 486 of the Logan County Records of Deeds and being more particularly described as follows:

Beginning at a 1 inch iron rod found at the northeast corner of the southeast quarter of Section 34 on the east line of Miami Township at the point of intersection station 40+45.1 (Logan County Engineers' Field Book 700, Page 3) of County Highway 62.

THENCE, with the east lines of Section 34 and Miami Township and the center-line of County Highway 62, (60 feet wide), S 4°-58'-21" W, a distance of 1205.58 feet to a MAG nail set at the TRUE POINT OF BEGINNING.

THENCE, with the east lines of Section 34 and Miami Township and the center-line of County Highway 62, S 4°-58'-21" W, a distance of 300.00 feet to a 5/8 inch iron rod found.

THENCE, with the north line of the Scott C. Hepner 13.000 acre tract, (O.R. 426, Pg. 361), N 85°-00'-43" W, a distance of 928.65 feet to a 5/8 inch iron rod found, passing a 5/8 inch iron rod set at 30.00 feet.

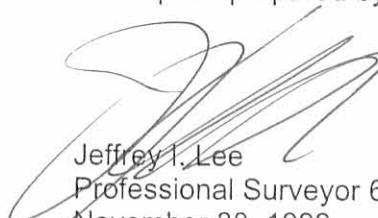
THENCE, with the east line of the Kerry L. Snapp 23.976 acre tract, (O.R. 363, Pg. 957), N 4°-58'-14" E, a distance of 300.00 feet to a 5/8 inch iron rod set.

THENCE, S 85°-00'-43" E, a distance of 928.66 feet to the point of beginning, passing a 5/8 inch iron rod set at 898.66 feet.

Containing 6.396 acres of which 0.207 acre is within the highway right-of-way.

The basis for bearings is the east line of Section 34, being S 4°-58'-21" W, and all other bearings are from angles and distances measured in a field survey by Lee Surveying and Mapping Co., Inc. on November 26, 1999.

Description prepared by:


Jeffrey I. Lee
Professional Surveyor 6359
November 30, 1999



ORIGINAL STAMP IN GREEN
L-2848

4957 6D-1

Lee Surveying and Mapping Co., Inc.

Land Surveys • Topography • Subdivisions • Construction Layout

117 N. Madriver St.
Bellefontaine OH 43311



Phone: (937) 593-7335
Fax: (937) 593-7444

ECKART 6.396 ACRES TRACT B

Lying in Section 34, Town 4, Range 13, Miami Township, Logan County, Ohio.

Being out of the Roger C. Eckart and Patricia L. Eckart 32.104 acre tract as deeded and described in Official Record 431, Page 486 of the Logan County Records of Deeds and being more particularly described as follows:

Beginning at a 1 inch iron rod found at the northeast corner of the southeast quarter of Section 34 on the east line of Miami Township at the point of intersection station 40+45.1 (Logan County Engineers' Field Book 700, Page 3) of County Highway 62.

THENCE, with the east lines of Section 34 and Miami Township and the center-line of County Highway 62, (60 feet wide), S 4°-58'-21" W, a distance of 905.58 feet to a MAG nail set at the TRUE POINT OF BEGINNING.

THENCE, with the east lines of Section 34 and Miami Township and the center-line of County Highway 62, S 4°-58'-21" W, a distance of 300.00 feet to a MAG nail set.

THENCE, N 85°-00'-43" W, a distance of 928.66 feet to a 5/8 inch iron rod set, passing a 5/8 inch iron rod set at 30.00 feet.

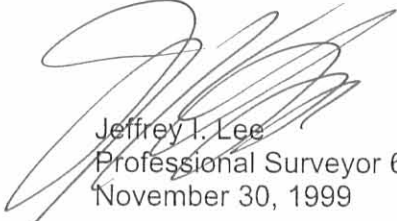
THENCE, with the east line of the Kerry L. Snapp 23.976 acre tract, (O.R. 363, Pg. 957), N 4°-58'-14" E, a distance of 300.00 feet to a 5/8 inch iron rod set.

THENCE, S 85°-00'-43" E, a distance of 928.67 feet to the point of beginning, passing a 5/8 inch iron rod set at 898.67 feet.

Containing 6.396 acres of which 0.207 acre is within the highway right-of-way.

The basis for bearings is the east line of Section 34, being S 4°-58'-21" W, and all other bearings are from angles and distances measured in a field survey by Lee Surveying and Mapping Co., Inc. on November 26, 1999.

Description prepared by:


Jeffrey I. Lee
Professional Surveyor 6359
November 30, 1999



ORIGINAL STAMP IN GREEN
L-2848

4957 UD-2

Lee Surveying and Mapping Co., Inc.

Land Surveys • Topography • Subdivisions • Construction Layout

117 N. Madriver St.
Bellefontaine OH 43311



Phone: (937) 593-7335
Fax: (937) 593-7444

ECKART 6.396 ACRES TRACT C

Lying in Section 34, Town 4, Range 13, Miami Township, Logan County, Ohio.

Being out of the Roger C. Eckart and Patricia L. Eckart 32.104 acre tract as deeded and described in Official Record 431, Page 486 of the Logan County Records of Deeds and being more particularly described as follows:

Beginning at a 1 inch iron rod found at the northeast corner of the southeast quarter of Section 34 on the east line of Miami Township at the point of intersection station 40+45.1 (Logan County Engineers' Field Book 700, Page 3) of County Highway 62.

THENCE, with the east lines of Section 34 and Miami Township and the center-line of County Highway 62, (60 feet wide), S 4°-58'-21" W, a distance of 605.58 feet to a MAG nail set at the TRUE POINT OF BEGINNING.

THENCE, with the east lines of Section 34 and Miami Township and the center-line of County Highway 62, S 4°-58'-21" W, a distance of 300.00 feet to a MAG nail set.

THENCE, N 85°-00'-43" W, a distance of 928.67 feet to a 5/8 inch iron rod set, passing a 5/8 inch iron rod set at 30.00 feet.

THENCE, with the east line of the Kerry L. Snapp 23.976 acre tract, (O.R. 363, Pg. 957), N 4°-58'-14" E, a distance of 300.00 feet to a 5/8 inch iron rod set.

THENCE, S 85°-00'-43" E, a distance of 928.68 feet to the point of beginning, passing a 5/8 inch iron rod set at 288.70 and 898.68 feet.

Containing 6.396 acres of which 0.207 acre is within the highway right-of-way.

The basis for bearings is the east line of Section 34, being S 4°-58'-21" W, and all other bearings are from angles and distances measured in a field survey by Lee Surveying and Mapping Co., Inc. on November 26, 1999.

Description prepared by:

A handwritten signature in black ink, appearing to read 'Jeffrey I. Lee', is written over a circular stamp.

Jeffrey I. Lee
Professional Surveyor 6359
November 30, 1999



ORIGINAL STAMP IN GREEN

L-2848

4957 6D-3

Lee Surveying and Mapping Co., Inc.

Land Surveys • Topography • Subdivisions • Construction Layout

117 N. Madriver St.
Bellefontaine OH 43311



Phone: (937) 593-7335
Fax: (937) 593-7444

ECKART 4.014 ACRES TRACT D

Lying in Section 34, Town 4, Range 13, Miami Township, Logan County, Ohio.

Being out of the Roger C. Eckart and Patricia L. Eckart 32.104 acre tract as deeded and described in Official Record 431, Page 486 of the Logan County Records of Deeds and being more particularly described as follows:

Beginning at a 1 inch iron rod found at the northeast corner of the southeast quarter of Section 34 on the east line of Miami Township at the point of intersection station 40+45.1 (Logan County Engineers' Field Book 700, Page 3) of County Highway 62.

THENCE, with the north line of the southeast quarter of Section 34 and the center-line of County Highway 62, (60 feet wide), N 85°-00'-06" W, a distance of 640.00 feet to a MAG nail set at the TRUE POINT OF BEGINNING.

THENCE, S 4°-58'-14" W, a distance of 605.69 feet to a 5/8 inch iron rod set, passing a 5/8 inch iron rod set at 30.00 feet.

THENCE, N 85°-00'-43" W, a distance of 288.70 feet to a 5/8 inch iron rod set.

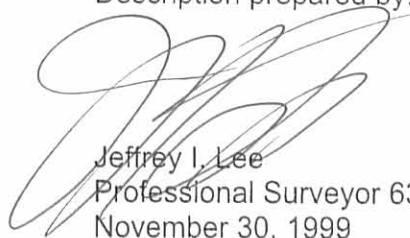
THENCE, with the east line of the Kerry L. Snapp 23.976 acre tract, (O.R. 363, Pg. 957), N 4°-58'-14" E, a distance of 605.74 feet to a MAG nail found, passing a 5/8 inch iron rod found at 575.60 feet.

THENCE, with the north line of the southeast quarter of Section 34 and the center-line of County Highway 62, S 85°-00'-06" E, a distance of 288.70 feet to the point of beginning.

Containing 4.014 acres of which 0.199 acre is within the highway right-of-way.

The basis for bearings is the east line of Section 34, being S 4°-58'-21" W, and all other bearings are from angles and distances measured in a field survey by Lee Surveying and Mapping Co., Inc. on November 26, 1999.

Description prepared by:


Jeffrey I. Lee
Professional Surveyor 6359
November 30, 1999



ORIGINAL STAMP IN GREEN
L-2848

4957 6D-4

Lee Surveying and Mapping Co., Inc.

Land Surveys • Topography • Subdivisions • Construction Layout

117 N. Madriver St.
Bellefontaine OH 43311



Phone: (937) 593-7335
Fax: (937) 593-7444

ECKART 8.898 ACRES TRACT E

Lying in Section 34, Town 4, Range 13, Miami Township, Logan County, Ohio.

Being out of the Roger C. Eckart and Patricia L. Eckart 32.104 acre tract as deeded and described in Official Record 431, Page 486 of the Logan County Records of Deeds and being more particularly described as follows:

Beginning at a 1 inch iron rod found at the northeast corner of the southeast quarter of Section 34 on the east line of Miami Township at the point of intersection station 40+45.1 (Logan County Engineers' Field Book 700, Page 3) of County Highway 62.

THENCE, with the east lines of Section 34 and Miami Township and the center-line of County Highway 62, (60 feet wide), S 4°-58'-21" W, a distance of 605.58 feet to a MAG nail set.

THENCE, N 85°-00'-43" W, a distance of 639.98 feet to a 5/8 inch iron rod set, passing a 5/8 inch iron rod set at 30.00 feet.

THENCE, N 4°-58'-14" E, a distance of 605.69 feet to a MAG nail set, passing a 5/8 inch iron rod set at 575.69 feet.

THENCE, with the north line of the southeast quarter of Section 34 and the center-line of County Highway 62, S 85°-00'-06" E, a distance of 640.00 feet to the point of beginning.

Containing 8.898 acres of which 0.797 acre is within the highway right-of-way.

The basis for bearings is the east line of Section 34, being S 4°-58'-21" W, and all other bearings are from angles and distances measured in a field survey by Lee Surveying and Mapping Co., Inc. on November 26, 1999.

Description prepared by:

A handwritten signature in black ink, appearing to read 'Jeffrey I. Lee', is written over the typed name and title.

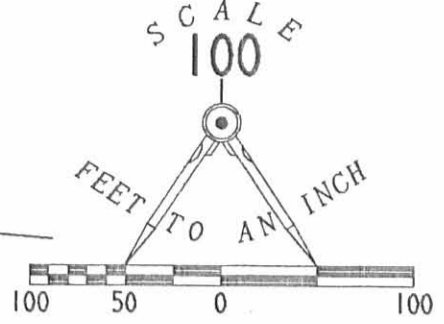
Jeffrey I. Lee
Professional Surveyor 6359
November 30, 1999



ORIGINAL STAMP IN GREEN
L-2848

4957 4D-5

STA. 40+45.1
LOGAN COUNTY ENGINEERS'
FIELD BOOK 700, PAGE. 3



LEGEND

- 5/8 INCH IRON ROD SET
- 5/8 INCH IRON ROD FOUND
- ⊙ MAG NAIL SET
- ⊗ MAG NAIL FOUND
- ⊕ 1 INCH IRON ROD FOUND
- ⊠ CONCRETE RIGHT-OF-WAY MONUMENT FOUND

KERRY L. SNAPP AND
JOYCE C. SNAPP
23.976 ACRES
O.R. 363, PG. 957

TRACT D
4.014 ACRES
OF WHICH 0.199 ACRE IS WITHIN
THE HIGHWAY RIGHT-OF-WAY

TRACT E
8.898 ACRES
OF WHICH 0.797 ACRE IS WITHIN
THE HIGHWAY RIGHT-OF-WAY

TRACT C
6.396 ACRES
OF WHICH 0.207 ACRE IS WITHIN
THE HIGHWAY RIGHT-OF-WAY

TRACT B
6.396 ACRES
OF WHICH 0.207 ACRE IS WITHIN
THE HIGHWAY RIGHT-OF-WAY

TRACT A
6.396 ACRES
OF WHICH 0.207 ACRE IS WITHIN
THE HIGHWAY RIGHT-OF-WAY

SCOTT C. HEPNER
13.000 ACRES
O.R. 426, PG. 361

SURVEY OF FIVE TRACTS OUT OF
THE ROGER C. ECKART AND
PATRICIA L. ECKART
32.104 ACRE TRACT
OFFICIAL RECORD 431, PAGE 486
SECTION 34, TOWN 4, RANGE 13
MIAMI TOWNSHIP
LOGAN COUNTY, OHIO



SURVEYED BY:

JEFFREY I. LEE
PROFESSIONAL SURVEYOR 6359
NOVEMBER 26, 1999

COPYRIGHT 1999 BY:
LEE SURVEYING & MAPPING CO., INC.
117 North Madriver Street
BELLEFONTAINE, OHIO 43311
(937) 593-7335

D 365 RECKART

L-2848-2

2 WORKING DAYS
BEFORE YOU DIG
CALL TOLL FREE 800-362-2764
OHIO UTILITIES PROTECTION SERVICE.

Lee Surveying and Mapping Co., Inc.

Land Surveys • Topography • Subdivisions • Construction Layout

117 N. Madriver St.
Bellefontaine OH 43311



Phone: (937) 593-7335
Fax: (937) 593-7444

ECKART 2.669 ACRES TRACT F

Lying in Section 34, Town 4, Range 13, Miami Township, Logan County, Ohio.

Being out of the Roger C. Eckart and Patricia L. Eckart 32.104 acre tract as deeded and described in Official Record 431, Page 486 of the Logan County Records of Deeds and being more particularly described as follows:

Beginning at a 1 inch iron rod found at the northeast corner of the southeast quarter of Section 34 on the east line of Miami Township at the point of intersection station 40+45.1 (Logan County Engineers' Field Book 700, Page 3) of County Highway 62.

THENCE, with the north line of the southeast quarter of Section 34 and the center-line of County Highway 62, (60 feet wide), N 85°-00'-06" W, a distance of 448.00 feet to a MAG nail set at the TRUE POINT OF BEGINNING.

THENCE, S 4°-58'-14" W, a distance of 605.66 feet to a 5/8 inch iron rod set, passing a 5/8 inch iron rod set at 30.00 feet.

THENCE, N 85°-00'-43" W, a distance of 192.00 feet to a 5/8 inch iron rod set.

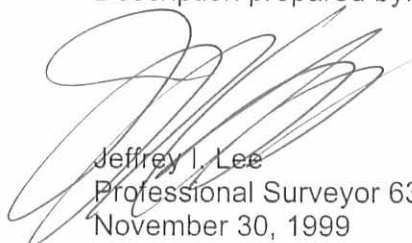
THENCE, N 4°-58'-14" E, a distance of 605.69 feet to a MAG nail set, passing a 5/8 inch iron rod set at 575.69 feet.

THENCE, with the north line of the southeast quarter of Section 34 and the center-line of County Highway 62, S 85°-00'-06" E, a distance of 192.00 feet to the point of beginning.

Containing 2.669 acres of which 0.132 acre is within the highway right-of-way.

The basis for bearings is the east line of Section 34, being S 4°-58'-21" W, and all other bearings are from angles and distances measured in a field survey by Lee Surveying and Mapping Co., Inc. on November 26, 1999.

Description prepared by:


Jeffrey I. Lee
Professional Surveyor 6359
November 30, 1999



ORIGINAL STAMP IN GREEN
L-2848

4957 7D-1

Lee Surveying and Mapping Co., Inc.

Land Surveys • Topography • Subdivisions • Construction Layout

117 N. Madriver St.
Bellefontaine OH 43311



Phone: (937) 593-7335
Fax: (937) 593-7444

ECKART 1.983 ACRES TRACT G

Lying in Section 34, Town 4, Range 13, Miami Township, Logan County, Ohio.

Being out of the Roger C. Eckart and Patricia L. Eckart 32.104 acre tract as deeded and described in Official Record 431, Page 486 of the Logan County Records of Deeds and being more particularly described as follows:

Beginning at a 1 inch iron rod found at the northeast corner of the southeast quarter of Section 34 on the east line of Miami Township at the point of intersection station 40+45.1 (Logan County Engineers' Field Book 700, Page 3) of County Highway 62.

THENCE, with the east lines of Section 34 and Miami Township and the center-line of County Highway 62, (60 feet wide), S 4°-58'-21" W, a distance of 412.79 feet to a MAG nail set at the TRUE POINT OF BEGINNING.

THENCE, with the east lines of Section 34 and Miami Township and the center-line of County Highway 62, S 4°-58'-21" W, a distance of 192.79 feet to a MAG nail set.

THENCE, N 85°-00'-43" W, a distance of 447.98 feet to a 5/8 inch iron rod set, passing a 5/8 inch iron rod set at 30.00 feet.

THENCE, N 4°-58'-14" E, a distance of 192.79 feet to a 5/8 inch iron rod set.

THENCE, S 85°-00'-43" E, a distance of 447.99 feet to the point of beginning, passing a 5/8 inch iron rod set at 417.99 feet.

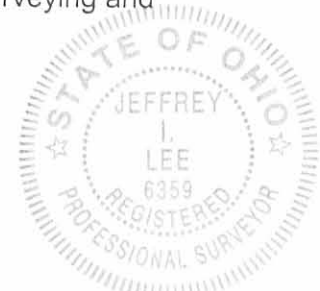
Containing 1.983 acres of which 0.133 acre is within the highway right-of-way.

The basis for bearings is the east line of Section 34, being S 4°-58'-21" W, and all other bearings are from angles and distances measured in a field survey by Lee Surveying and Mapping Co., Inc. on November 26, 1999.

Description prepared by:

A handwritten signature in black ink, appearing to read 'Jeffrey I. Lee', is written over the typed name and title.

Jeffrey I. Lee
Professional Surveyor 6359
November 30, 1999



ORIGINAL STAMP IN GREEN

L-2848

4957 7D-2

Lee Surveying and Mapping Co., Inc.

Land Surveys • Topography • Subdivisions • Construction Layout

117 N. Madriver St.
Bellefontaine OH 43311



Phone: (937) 593-7335
Fax: (937) 593-7444

ECKART 1.983 ACRES TRACT H

Lying in Section 34, Town 4, Range 13, Miami Township, Logan County, Ohio.

Being out of the Roger C. Eckart and Patricia L. Eckart 32.104 acre tract as deeded and described in Official Record 431, Page 486 of the Logan County Records of Deeds and being more particularly described as follows:

Beginning at a 1 inch iron rod found at the northeast corner of the southeast quarter of Section 34 on the east line of Miami Township at the point of intersection station 40+45.1 (Logan County Engineers' Field Book 700, Page 3) of County Highway 62.

THENCE, with the east lines of Section 34 and Miami Township and the center-line of County Highway 62, (60 feet wide), S 4°-58'-21" W, a distance of 220.00 feet to a MAG nail set at the TRUE POINT OF BEGINNING.

THENCE, with the east lines of Section 34 and Miami Township and the center-line of County Highway 62, S 4°-58'-21" W, a distance of 192.79 feet to a MAG nail set.

THENCE, N 85°-00'-43" W, a distance of 447.99 feet to a 5/8 inch iron rod set, passing a 5/8 inch iron rod set at 30.00 feet.

THENCE, N 4°-58'-14" E, a distance of 192.79 feet to a 5/8 inch iron rod set.

THENCE, S 85°-00'-43" E, a distance of 447.99 feet to the point of beginning, passing a 5/8 inch iron rod set at 417.99.

Containing 1.983 acres of which 0.133 acre is within the highway right-of-way.

The basis for bearings is the east line of Section 34, being S 4°-58'-21" W, and all other bearings are from angles and distances measured in a field survey by Lee Surveying and Mapping Co., Inc. on November 26, 1999.

Description prepared by:

A handwritten signature in black ink, appearing to read 'Jeffrey I. Lee', is written over the typed name and title.

Jeffrey I. Lee
Professional Surveyor 6359
November 30, 1999



ORIGINAL STAMP IN GREEN
L-2848

4457 7D-3

Lee Surveying and Mapping Co., Inc.

Land Surveys • Topography • Subdivisions • Construction Layout

117 N. Madriver St.
Bellefontaine OH 43311



Phone: (937) 593-7335
Fax: (937) 593-7444

ECKART 2.263 ACRES TRACT J

Lying in Section 34, Town 4, Range 13, Miami Township, Logan County, Ohio.

Being out of the Roger C. Eckart and Patricia L. Eckart 32.104 acre tract as deeded and described in Official Record 431, Page 486 of the Logan County Records of Deeds and being more particularly described as follows:

Beginning at a 1 inch iron rod found at the northeast corner of the southeast quarter of Section 34 on the east line of Miami Township at the point of intersection station 40+45.1 (Logan County Engineers' Field Book 700, Page 3) of County Highway 62.

THENCE, with the east lines of Section 34 and Miami Township and the center-line of County Highway 62, S 4°-58'-21" W, a distance of 220.00 feet to a MAG nail set.

THENCE, N 85°-00'-43" W, a distance of 447.99 feet to a 5/8 inch iron rod set, passing a 5/8 inch iron rod set at 30.00 feet.

THENCE, N 4°-58'-14" E, a distance of 220.08 feet to a MAG nail set, passing a 5/8 inch iron rod set 190.08 feet.

THENCE, with the north line of the southeast quarter of Section 34 and the center-line of County Highway 62, S 85°-00'-06" E, a distance of 448.00 feet to the point of beginning.

Containing 2.263 acres of which 0.399 acre is within the highway right-of-way.

The basis for bearings is the east line of Section 34, being S 4°-58'-21" W, and all other bearings are from angles and distances measured in a field survey by Lee Surveying and Mapping Co., Inc. on November 26, 1999.

Description prepared by:

A handwritten signature in black ink, appearing to read 'Jeffrey I. Lee', is written over the typed name and title.

Jeffrey I. Lee
Professional Surveyor 6359
November 30, 1999

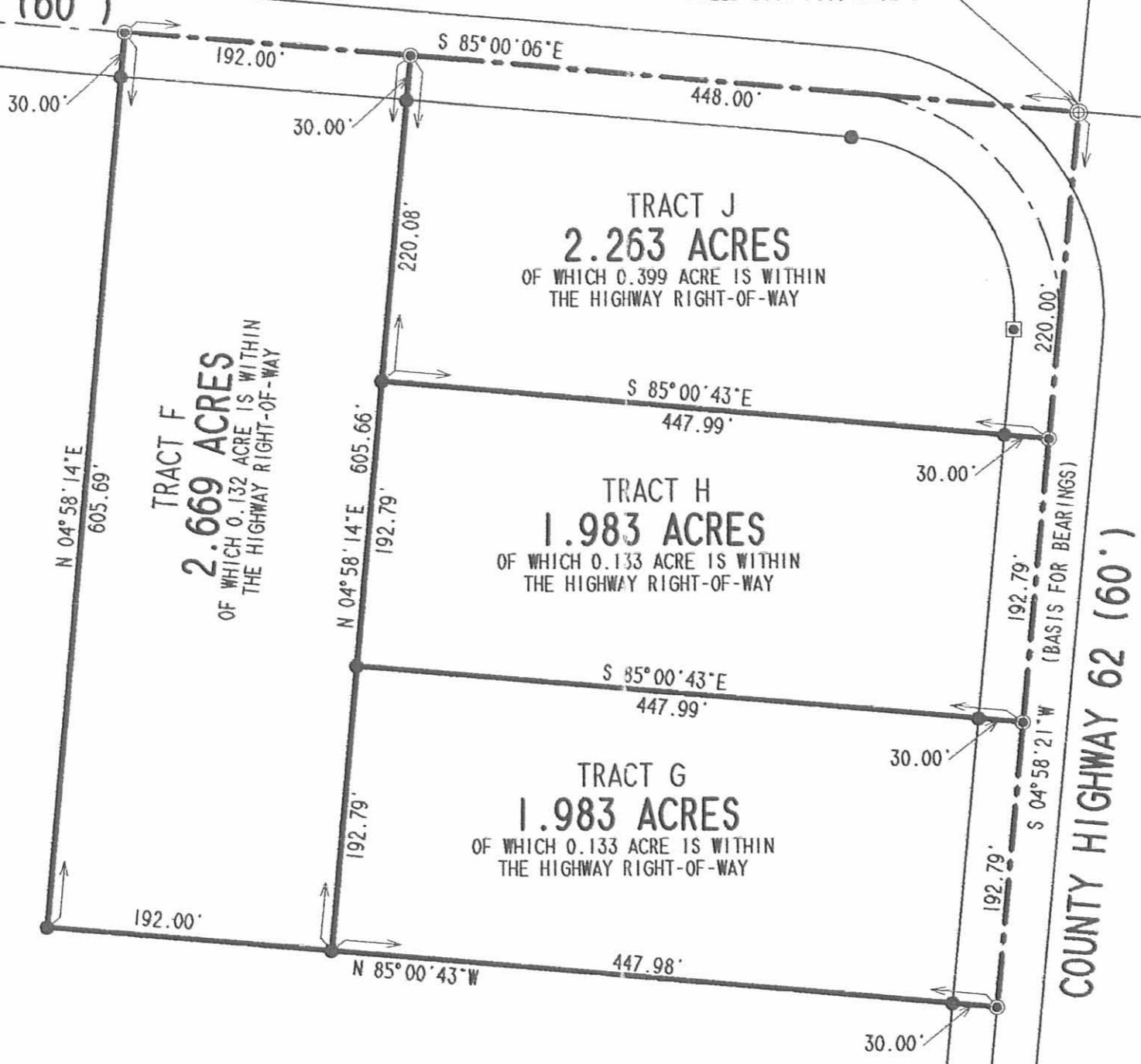
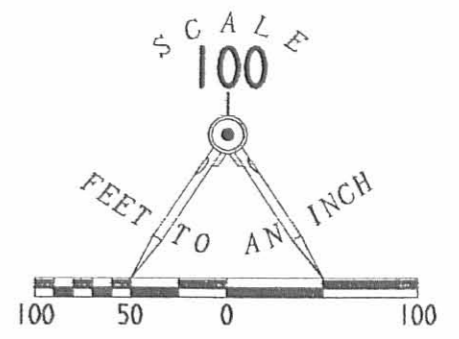


ORIGINAL STAMP IN GREEN

L-2848

COUNTY HIGHWAY 62 (60')

STA. 40+45.1
LOGAN COUNTY ENGINEERS'
FIELD BOOK 700, PAGE 3



- LEGEND
- 5/8 INCH IRON ROD SET
 - 5/8 INCH IRON ROD FOUND
 - ⊙ MAG NAIL SET
 - ⊘ MAG NAIL FOUND
 - ⊕ 1 INCH IRON ROD FOUND
 - ⊞ CONCRETE RIGHT-OF-WAY MONUMENT FOUND

SURVEY OF FOUR TRACTS OUT OF
THE ROGER C. ECKART AND
PATRICIA L. ECKART
32.104 ACRE TRACT
OFFICIAL RECORD 431, PAGE 486
SECTION 34, TOWN 4, RANGE 13
MIAMI TOWNSHIP
LOGAN COUNTY, OHIO

ROGER C. ECKART AND
PATRICIA L. ECKART
32.104 ACRE TRACT
O.R. 431, PG. 486



SURVEYED BY:
Jeffrey I. Lee
JEFFREY I. LEE
PROFESSIONAL SURVEYOR 6359
NOVEMBER 26, 1999

COPYRIGHT 1999 BY:
LEE SURVEYING & MAPPING CO., INC.
117 North Madriver Street
BELLEFONTAINE, OHIO 43311
(937) 593-7335

ORIGINAL STAMP IN GREEN

2 WORKING DAYS
BEFORE YOU DIG
CALL TOLL FREE 800-362-2764

4957 7P

LESLIE H. GEESLIN
 REGISTERED SURVEYOR 5248
 P. O. BOX 274
 RUSHSVLVANIA, OHIO 43347
 TELEPHONE: (937) 468-2793

FARLEY SURVEY

March 5, 1998

The following described real estate situated in the State of Ohio, County of Logan, Township of Miami, being part of Section 34, Town 4, Range 13, M. R. S. and more particularly described as follows:

Beginning at a 5/8 inch iron bar found in the centerline of County Highway 62 at the northeast corner of Scott C. and Jill R. Hepner's 13.00 acre tract as described in O. R. Vol. 305 pages 500-502.

Thence with said Hepner's north line N. 85° 01' 08" W. 1353.31 feet to a 5/8 inch iron bar found at said Hepner's northwest corner, passing a 5/8 inch iron bar set at 30.00 feet.

Thence N. 10° 55' 46" W. 479.09 feet to a 12 inch concrete post found at the southeast corner of Samuel Eugene and Annette Suzann Harpest's 59.27 acre tract as described in D. B. Vol. 391 page 781.

Thence with said Harpest's east line N. 18° 30' 01" W. 1140.03 feet to a magnetic nail set in the centerline of said C. H. 62, passing a R. R. tie post found at 1107.33 feet.

Thence with the centerline of said C. H. 62 S. 85° 00' 00" E. 1938.66 feet to a 1 inch iron bar found.

Thence again with the centerline of said C. H. 62 S. 4° 58' 21" W. 1505.73 feet to the place of beginning.

Containing 56.080 acres more or less of which 2.347 acres are in the right of way of County Highway 62.

The above described 56.080 acre tract being part of Robert A. and Connie K. Farley's 100.00 acre tract as described in O. R. Vol. 319 Page 991.

Bearings are based on an assumed bearing (S.85° 00' 00" E.) for the centerline of County Highway 62 in this field survey by Leslie H. Geeslin, Reg. Surveyor 5248 on March 5, 1998.

MIAMI\24\FARLEY3.SAM

INDEXED ON MAP
4957 00



Leslie H. Geeslin

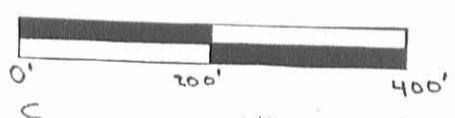


32.70
 SAMUEL EUGENE HARPEST
 ANNETTE SUZANN HARPEST
 59.27 ACRES
 D.B. VOL 391 -
 PAGE 781 1140.03

ROBERT A. FARLEY
 AND
 CONNIE K. FARLEY
 100.00 ACRES
 O.R. VOL 319 PAGE 991

56.080 ACRES
 (2.347 AC IN R/W)

SCOTT C. HEPNER
 AND
 JILL R. HEPNER
 13.00 ACRES
 O.R. VOL 303 PAGES 500-502



SCALE: 1" = 200'

LEGEND:

- = MAG. NAIL SET
- ⊙ = 1" IRON BAR FD.
- = 5/8" IRON BAR FD.
- = R/R TIE POST FD.
- △ = 12" CONC. POST FD.
- = 5/8" IRON BAR SET

SURVEY OF A 56.080 ACRE TRACT IN
 SEC. 34, T.4, R.13 M.R.S.,
 MIAMI TWP., LOGAN CO., OHIO.
 MARCH 5, 1998



Leslie H. Geeslin
 LESLIE H. GEESLIN
 RUSHSLUANA, OHIO
 PH: (937) 468-2793
 (D.L.G.)

49579P

LESLIE H. GEESLIN
REGISTERED SURVEYOR 5248
P. O. BOX 274
RUSHSVLVANIA, OHIO 43347
TELEPHONE: (513) 468-2793

Farley Survey

October 11, 1996

The following described real estate situated in the State of Ohio, County of Logan, the Township of Miami, being a part of Section 34, Town 4, Range 13, M.R.S. and more particularly described as follows:

Beginning at a R. R. spike found in the centerline of County Highway 62 at the northeast corner of Neal Randal and Lori Sue Longbrake's 1.00 acre tract as described in O. R. Vol. 54 Page 140.

Thence with said Longbrake's north line N. 87° 21' 28" W. 158.40 feet to a 5/8 inch iron bar set, passing a 5/8 inch iron bar found at 30.00 feet.

Thence with said Longbrake's west line s. 2° 31' 36" W. 275.13 feet to a 5/8 inch iron bar found in the south line of Logan County and the north line of Champaign County.

Thence with the Logan/Champaign County line N. 87° 21' 28" W. 1195.17 feet to a 5/8 inch iron bar found in the easterly line of Palmer B. and Betty A. Stengel's 100.00 acre tract as described in D. B. Vol. 338 Page 525.

Thence with said Stengel's easterly line N. 2° 33' 59" E. 769.46 feet to a 5/8 inch iron bar set.

Thence S. 87° 27' 24" E. 1353.18 feet to a R. R. spike set in the centerline of said C. H. 62, passing a 5/8 inch iron bar set at 1323.18 feet.

Thence with the centerline of said C. H. 62 S. 2° 33' 00" W. 496.66 feet to the place of beginning.

Containing 22.937 acres more or less of which 0.342 acre is in the right of way of County Highway 62.

The above described 22.937 acre tract being the south part of Robert A. and Connie K. Farley's 36.00 acre tract as described in O. R. Vol. 80 Page 358.

Bearings are based on an assumed bearing (S. 2° 33' 00" W.) for the centerline of County Highway 62 in this field survey by Leslie H. Geeslin, Reg. Surveyor 5248 on October 11, 1996.

INDEXED ON MAP
4957 9D-1



Leslie H. Geeslin

LESLIE H. GEESLIN

REGISTERED SURVEYOR 5248

P. O. BOX 274

RUSHSVLVANIA, OHIO 43347

TELEPHONE: (513) 468-2793

Farley Survey

October 11, 1996

The following described real estate situated in the State of Ohio, County of Logan, the Township of Miami, being a part of Section 34, Town 4, Range 13, M.R.S. and more particularly described as follows:

Beginning at a 5/8 inch iron bar found in the centerline of County Highway 62 at the southeast corner of Palmer B. and Betty A. Stengel's 100.00 acre tract as described in D. B. Vol. 338 Page 525.

Thence with the centerline of said C. H. 62 S. 2° 33' 00" W. 418.50 feet to a R. R. spike set.

Thence N. 87° 27' 24" W. 1353.18 feet to a 5/8 inch iron bar set in said Stengel's easterly line, passing a 5/8 inch iron bar set at 30.00 feet.

Thence with said Stengel's easterly line N. 2° 33' 59" E. 418.50 feet to a 5/8 inch iron bar found.

Thence with said Stengel's southerly line S. 87° 27' 24" E. 1353.06 feet the place of beginning.

Containing 13.000 acres more or less of which 0.288 acre is in the right of way of County Highway 62.

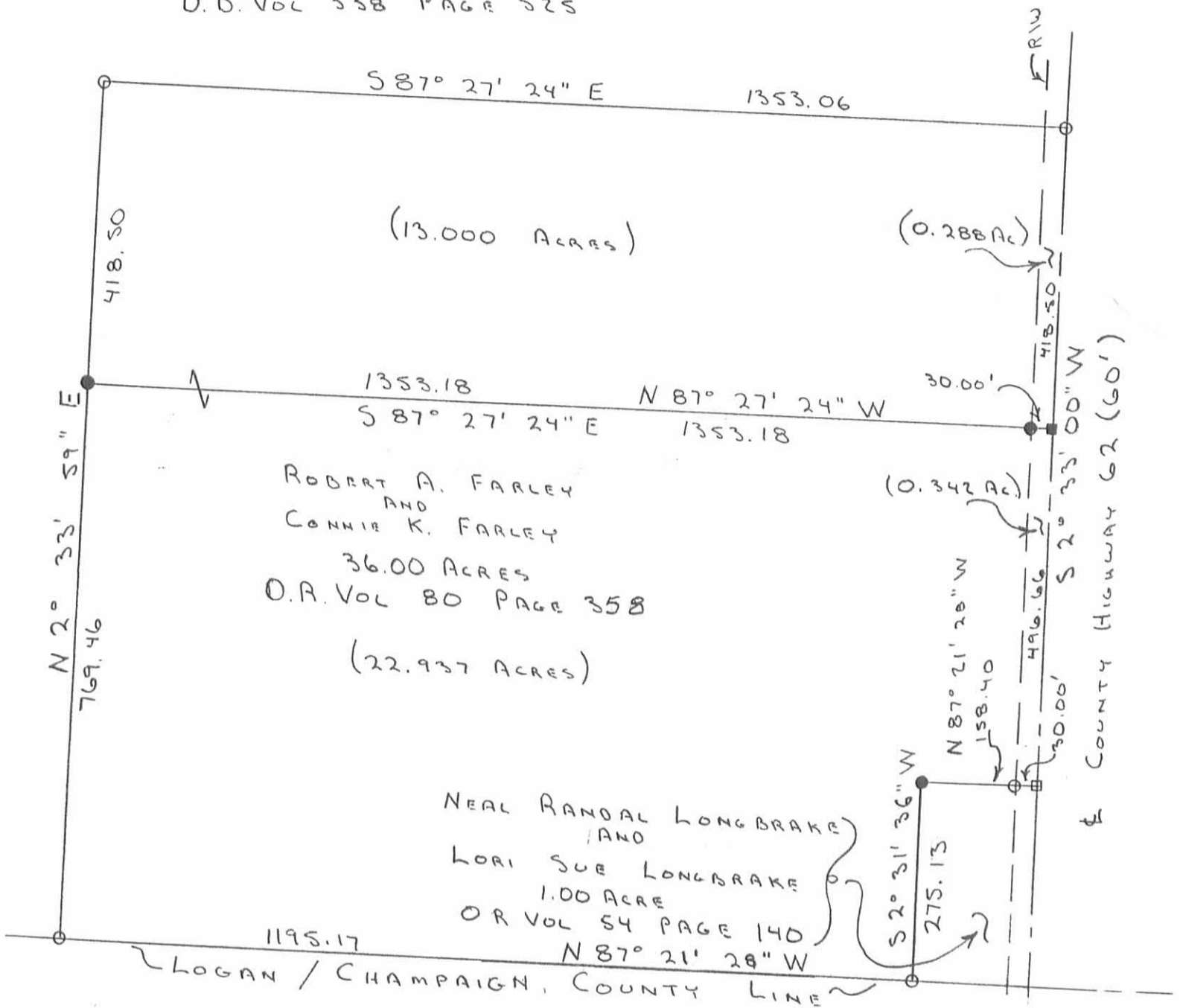
The above described 13.000 acre tract being the north part of Robert A. and Connie K. Farley's 36.00 acre tract as described in O. R. Vol. 80 Page 358.

Bearings are based on an assumed bearing (S. 2° 33' 00" W.) for the centerline of County Highway 62 in this field survey by Leslie H. Geeslin, Reg. Surveyor 5248 on October 11, 1996.



Leslie H. Geeslin
LESLIE H. GEESLIN
RUSHSVLVANIA, OHIO
PH 513-468-2793

PALMER B. STENGEL
 AND
 BETTY A. STENGEL
 100.00 ACRES
 D.B. VOL 338 PAGE 525



SCALE: 1" = 200'

SURVEY OF A 13.000 ACRE TRACT
 AND A 22.937 ACRE TRACT IN
 SEC. 34, T. 4, R 13 M.R.S.,
 MIAMI TWP., LOGAN CO., OHIO.
 OCTOBER 11, 1996

LEGEND:

- = 5/8" IRON BAR FD.
- = RIR SPK FD.
- = 5/8" IRON BAR SET
- = RIR SPK SET



Leslie H. Grescin
 LESLIE H. GRESGIN
 RUSHSVLVANIA, OHIO
 PH: 468-2793
 (D.L.G.)

INDEXED ON MAP
 4957 9P

REC'D 2-3-00 July 01 ✓

Lee Surveying and Mapping Co., Inc.

Land Surveys • Topography • Subdivisions • Construction Layout

117 N. Madriver St.
Bellefontaine OH 43311



Phone: (937) 593-7335
Fax: (937) 593-7444

ECKART 2.669 ACRES TRACT F

Lying in Section 34, Town 4, Range 13, Miami Township, Logan County, Ohio.

Being out of the Patricia L. Eckart and Roger C. Eckart 8.898 acre tract as deeded and described in Official Record 436, Page 589 of the Logan County Records of Deeds and being more particularly described as follows:

Beginning at a 1 inch iron rod found at the northeast corner of the southeast quarter of Section 34 on the east line of Miami Township at the point of intersection station 40+45.1 (Logan County Engineers' Field Book 700, Page 3) of County Highway 62.

THENCE, with the north line of the southeast quarter of Section 34 and the center-line of County Highway 62 (60 feet wide), N 85°-00'-06" W, a distance of 448.00 feet to a MAG nail set at the TRUE POINT OF BEGINNING.

THENCE, S 4°-58'-14" W, a distance of 605.66 feet to a 5/8 inch iron rod set, passing a 5/8 inch iron rod set at 30.00 feet.

THENCE, with the north line of the Patricia L. Eckart 6.396 acre tract (O.R. 436, Pg. 585), N 85°-00'-43" W, a distance of 192.00 feet to a 5/8 inch iron rod set.

THENCE, with the east line of the Patricia L. Eckart 4.014 acre tract (O.R. 436, Pg. 587), N 4°-58'-14" E, a distance of 605.69 feet to a MAG nail set, passing a 5/8 inch iron rod set at 575.69 feet.

THENCE, with the north line of the southeast quarter of Section 34 and the center-line of County Highway 62, S 85°-00'-06" E, a distance of 192.00 feet to the point of beginning.

Containing 2.669 acres of which 0.132 acre is within the highway right-of-way.

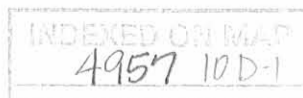
The basis for bearings is the east line of Section 34, being S 4°-58'-21" W, and all other bearings are from angles and distances measured in a field survey by Lee Surveying and Mapping Co., Inc. on January 28, 2000.

Description prepared by:

Jeffrey J. Lee
Professional Surveyor 6359
January 28, 2000



L-2848



REC'D 2-3-00 smy OK

Lee Surveying and Mapping Co., Inc.

Land Surveys • Topography • Subdivisions • Construction Layout

117 N. Madriver St.
Bellefontaine OH 43311



Phone: (937) 593-7335
Fax: (937) 593-7444

ECKART 2.781 ACRES TRACT G

Lying in Section 34, Town 4, Range 13, Miami Township, Logan County, Ohio.

Being out of the Patricia L. Eckart and Roger C. Eckart 8.898 acre tract as deeded and described in Official Record 436, Page 589 of the Logan County Records of Deeds and being more particularly described as follows:

Beginning at a 1 inch iron rod found at the northeast corner of the southeast quarter of Section 34 on the east line of Miami Township at the point of intersection station 40+45.1 (Logan County Engineers' Field Book 700, Page 3) of County Highway 62.

THENCE, with the north line of the southeast quarter of Section 34 and the center-line of County Highway 62 (60 feet wide), N 85°-00'-06" W, a distance of 248.00 feet to a MAG nail set at the TRUE POINT OF BEGINNING.

THENCE, S 4°-58'-14" W, a distance of 605.62 feet to a 5/8 inch iron rod set, passing a 5/8 inch iron rod set at 30.00 feet.

THENCE, with the north line of the Patricia L. Eckart 6.396 acre tract (O.R. 436, Pg. 585), N 85°-00'-43" W, a distance of 200.00 feet to a 5/8 inch iron rod set.

THENCE, N 4°-58'-14" E, a distance of 605.66 feet to a MAG nail set, passing a 5/8 inch iron rod set at 575.66 feet.

THENCE, with the north line of the southeast quarter of Section 34 and the center-line of County Highway 62, S 85°-00'-06" E, a distance of 200.00 feet to the POINT OF BEGINNING.

Containing 2.781 acres of which 0.138 acre is within the highway right-of-way.

The basis for bearings is the east line of Section 34, being S 4°-58'-21" W, and all other bearings are from angles and distances measured in a field survey by Lee Surveying and Mapping Co., Inc. on January 28, 2000.

Description prepared by:

Jeffrey I. Lee
Professional Surveyor 6359
January 28, 2000



ORIGINAL STAMP IN GREEN

L-2848

INDEXED ON MAP
4957 10D-2

REC'D 2-3-00 SURV OK ✓

Lee Surveying and Mapping Co., Inc.

Land Surveys • Topography • Subdivisions • Construction Layout

117 N. Madriver St.
Bellefontaine OH 43311



Phone: (937) 593-7335
Fax: (937) 593-7444

ECKART 3.448 ACRES TRACT H

Lying in Section 34, Town 4, Range 13, Miami Township, Logan County, Ohio.

Being out of the Patricia L. Eckart and Roger C. Eckart 8.898 acre tract as deeded and described in Official Record 436, Page 589 of the Logan County Records of Deeds and being more particularly described as follows:

Beginning at a 1 inch iron rod found at the northeast corner of the southeast quarter of Section 34 on the east line of Miami Township at the point of intersection station 40+45.1 (Logan County Engineers' Field Book 700, Page 3) of County Highway 62 (60 feet wide).

THENCE, with the east line of Section 34 and the center-line of County Highway 62, S 4°-58'-21" W, a distance of 605.58 feet to a MAG nail set.

THENCE, with the north line of the Patricia L. Eckart 6.396 acre tract (O.R. 436, Pg. 585), N 85°-00'-43" W, a distance of 247.98 feet to a 5/8 inch iron rod set, passing a 5/8 inch iron rod set at 30.00 feet.


THENCE, N 4°-58'-14" E, a distance of 605.62 feet to a MAG nail set, passing a 5/8 inch iron rod set at 575.62 feet.

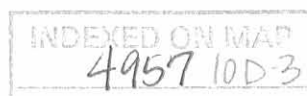
THENCE, with the north line of the southeast quarter of Section 34 and the center-line of County Highway 62, S 85°-00'-06" E, a distance of 248.00 feet to the point of beginning.

Containing 3.448 acres of which 0.256 acre is within the highway right-of-way.

The basis for bearings is the east line of Section 34, being S 4°-58'-21" W, and all other bearings are from angles and distances measured in a field survey by Lee Surveying and Mapping Co., Inc. on January 28, 2000.

Description prepared by:

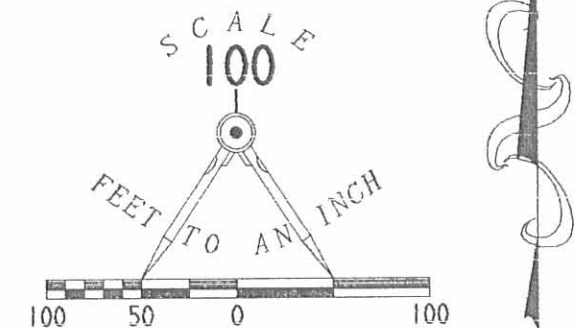

Jeffrey I. Lee
Professional Surveyor 6359
January 28, 2000



REC'D 2-3-00 STM OK ✓

COUNTY HIGHWAY 62 (60')

STA. 40+45.1
LOGAN COUNTY ENGINEERS
FIELD BOOK 700, PAGE 3



QUARTER SECTION LINE

PATRICIA L. ECKART AND
ROGER C. ECKART
4.014 ACRE TRACT
O.R. 436, PG. 587

TRACT F
2.669 ACRES
OF WHICH 0.132 ACRE IS WITHIN
THE HIGHWAY RIGHT-OF-WAY

PATRICIA L. ECKART AND
THE ROGER C. ECKART
8.898 ACRE TRACT
O.R. 436, PG. 589

TRACT G
2.781 ACRES
OF WHICH 0.138 ACRE IS WITHIN
THE HIGHWAY RIGHT-OF-WAY

TRACT H
3.448 ACRES
OF WHICH 0.256 ACRE IS WITHIN
THE HIGHWAY RIGHT-OF-WAY

PATRICIA L. ECKART AND
ROGER C. ECKART
6.396 ACRE TRACT
O.R. 436, PG. 585

- LEGEND
- 5/8 INCH IRON ROD SET
 - 5/8 INCH IRON ROD FOUND
 - ⊙ MAG NAIL SET
 - ⊗ MAG NAIL FOUND
 - ⊕ 1 INCH IRON ROD FOUND
 - CONCRETE RIGHT-OF-WAY MONUMENT FOUND

SURVEY OF
THREE TRACTS OUT OF
PATRICIA L. ECKART AND
THE ROGER C. ECKART
8.898 ACRE TRACT
OFFICIAL RECORD 436, PAGE 589
SECTION 34, TOWN 4, RANGE 13
MIAMI TOWNSHIP
LOGAN COUNTY, OHIO



SURVEYED BY:
Jeffrey T. Lee
JEFFREY T. LEE
PROFESSIONAL SURVEYOR 6359
JANUARY 28, 2000

COPYRIGHT 2000 BY:
LEE SURVEYING & MAPPING CO., INC.
117 North Madriver Street
BELLEFONTAINE, OHIO 43311
(937) 593-7335

ORIGINAL STAMP IN GREEN

D-365 RECKART2

L-2848-3

2 WORKING DAYS
BEFORE YOU DIG
CALL TOLL FREE **800-362-2764**
OHIO UTILITIES PROTECTION SERVICE.

4957 10P

REC'D 10-10-08 SML OK

Lee Surveying and Mapping Co., Inc.

Land Surveys • Topography • Subdivisions • Construction Layout

117 N. Madriver St.
Bellefontaine OH 43311



Phone: (937) 593-7335
Fax: (937) 593-7444

SNAPP 0.250 ACRE

Lying in Section 34, Town 4, Range 13, Miami Township, Logan County, Ohio.

Being out of the Kerry L. Snapp and Joyce C. Snapp 23.976 acre tract as deeded and described in Official Record 363, Page 957 of the Logan County Records of Deeds and being more particularly described as follows:

Commencing on a 1 inch iron bar found at an angle point on the center-line of County Highway 62 on the east line of Section 34 and Miami Township.

THENCE, with the center-line of County Highway 62 (60 feet wide), N 85°-00'-00"W, a distance of 1152.63 feet to a MAG nail found, passing a MAG nail found at 928.66 feet.

THENCE, with the east line of the Kerry B. Snapp and Lisa J. Snapp 2.000 acre tract (O.R. 390, Pg. 204), S 08°-13'-11"W, a distance of 380.28 feet to a 5/8 inch iron rod found at the TRUE POINT OF BEGINNING, passing a 5/8 inch iron rod found at 30.05 feet.

THENCE, S 08°-13'-11"W, a distance of 47.53 feet to a 5/8 inch iron rod set.

THENCE, N 85°-00'00" W, a distance of 229.46 feet to a 5/8 inch iron rod set.

THENCE, N 08°-13'-11"E, a distance of 47.53 feet to a 5/8 inch iron rod found.

THENCE, with the south line of the aforesaid 2.000 acre tract, S 85°-00'-00"E, a distance of 229.46 feet to the point of beginning.

Containing 0.250 acre.

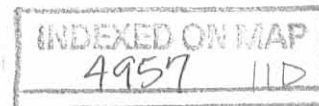
The basis for bearings is the center-line of County Highway 62, being S 85°-00'-00"E, and all other bearings are from angles and distances measured in a field survey by Lee Surveying and Mapping Co., Inc. on October 6, 2008.

Description prepared by:

William K. Bruce
Professional Surveyor 7437
October 7, 2008

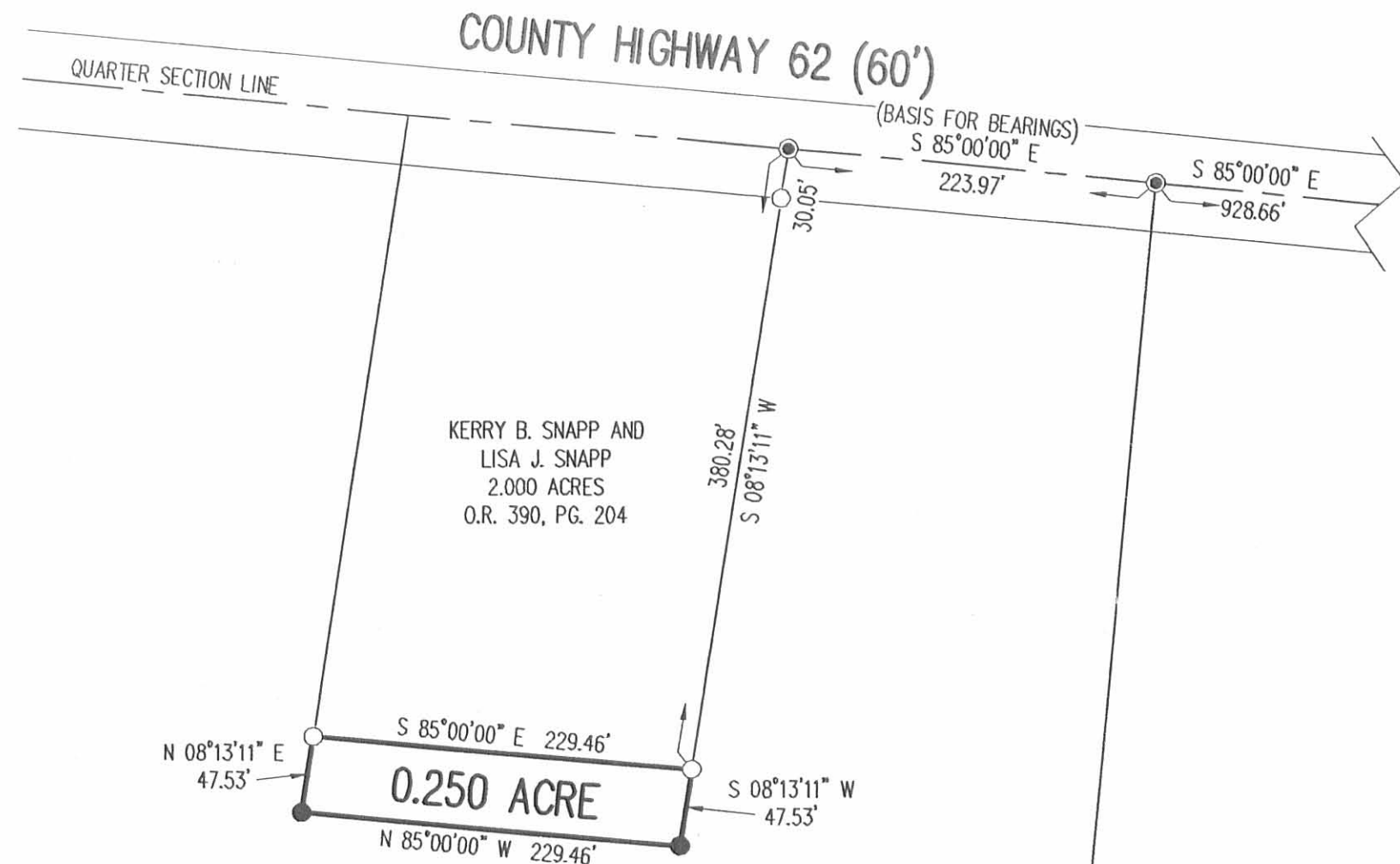


ORIGINAL STAMP IN GREEN



4711108

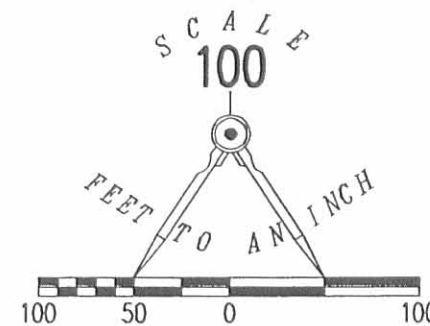
REC'D 10-10-08 SMY OK



KERRY B. SNAPP AND
LISA J. SNAPP
2.000 ACRES
O.R. 390, PG. 204

0.250 ACRE

KERRY L. SNAPP AND
JOYCE C. SNAPP
23.976 ACRES
O.R. 363, PG. 957



LEGEND:

- ⊙ 1 INCH IRON BAR FOUND
- MAG NAIL FOUND
- 5/8 INCH IRON ROD FOUND
- 5/8 INCH IRON ROD SET

**SURVEY OF 0.250 ACRE OUT OF THE
KERRY L. SNAPP AND
JOYCE C. SNAPP
23.976 ACRE TRACT
OFFICIAL RECORD 363, PAGE 957
SECTION 34, TOWN 4, RANGE 13
MIAMI TOWNSHIP
LOGAN COUNTY, OHIO**

SURVEYED BY:

William K. Bruce

WILLIAM K. BRUCE
PROFESSIONAL SURVEYOR 7437
OCTOBER 6, 2008



ORIGINAL STAMP IN GREEN

COPYRIGHT 2008 BY:
LEE SURVEYING & MAPPING CO., INC.
117 North Madriver Street
BELLEFONTAINE, OHIO 43311
(937) 593-7335
surveys@lsminc.us

KSS D1008 4711108 L-4711-3

2 WORKING DAYS
BEFORE YOU DIG
CALL TOLL FREE **800-362-2764**
OHIO UTILITIES PROTECTION SERVICE

INDEXED ON MAP
4957 11P

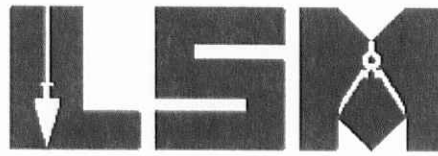
10-6-14

Lee Surveying and Mapping Co., Inc.

Land Surveys • Topography • Subdivisions • Construction Layout



117 N. Madriver St.
Bellefontaine OH 43311



Phone: (937) 593-7335
Fax: (937) 593-7444
surveys@lsminc.us

FARLEY 7.739 ACRES

Lying in Section 34, Town 4, Range 13, Miami Township, Logan County, Ohio.

Being out of the Robert A. Farley and Connie K. Farley original 36.00 acre tract as deeded and described in Official Record 80, Page 358 of the Logan County Records of Deeds and being more particularly described as follows:

Commencing on a 1 inch iron rod found on the northeast corner of the southeast quarter of Section 34 at P.I. Station 40+45.1 (Logan County Engineer's Field Book 700, Page 3) of County Highway 62 and the east line of Miami Township.

THENCE, with the east line of Section 34, the center-line of County Highway 62 (60 feet wide) and the east line of Miami Township, S 04°-29'-33"W, a distance of 1924.12 feet to a railroad spike found at the TRUE POINT OF BEGINNING.

THENCE, with the east line of Section 34, the center-line of County Highway 62 and the east line of Miami Township, S 04°-29'-33"W, a distance of 145.10 feet to a railroad spike found.

THENCE, with the lines of the Shannon R. Shoe and Lisa B. Shoe 3.185 acre tract (O.R. 895, Pg. 734), the following ten courses:

N 85°-30'-26"W, a distance of 30.00 feet to a 5/8 inch iron rod found on the west right-of-way of County Highway 62.

S 04°-29'-34"W, a distance of 66.86 feet to a 5/8 inch iron rod found.

N 89°-05'-36"W, a distance of 83.83 feet to a 5/8 inch iron rod found.

S 82°-26'-23"W, a distance of 149.31 feet to a 5/8 inch iron rod found.

S 67°-38'-13"W, a distance of 133.57 feet to a 5/8 inch iron rod found.

N 83°-00'-53"W, a distance of 195.90 feet to a 5/8 inch iron rod found.

N 76°-56'-29"W, a distance of 357.02 feet to a 5/8 inch iron rod found.

MEMBER: NATIONAL SOCIETY OF PROFESSIONAL SURVEYORS (NSPS)
PROFESSIONAL LAND SURVEYORS OF OHIO (PLSO)

INDEXED ON MAP
4957 125-1

Lee Surveying and Mapping Co., Inc.

Land Surveys • Topography • Subdivisions • Construction Layout

117 N. Madriver St.
Bellefontaine OH 43311



Phone: (937) 593-7335
Fax: (937) 593-7444
surveys@lsminc.us

N 72°-48'-02"W, a distance of 141.40 feet to a 5/8 inch iron rod found.

N 81°-47'-46"W, a distance of 288.15 feet to a 5/8 inch iron rod found.

N 04°-29'-42"E, a distance of 197.41 feet to a point.

THENCE, with the south line of the Tonya R. Tipton 13.000 acre tract (O.R. 1170, Pg. 642), S 85°-30'-05"E, a distance of 1353.08 feet to the point of beginning, passing 5/8 inch iron rods set at 3.00 feet and 1323.08 feet.

Containing 7.739 acres, of which 0.100 acre is within the highway right-of-way.

Property is subject to any and all previous easements and rights-of-way of record.

The basis for bearings is the east line of Section 34, being S 04°-29'-33"W, and all other bearings are from angles and distances measured in a field survey by Lee Surveying and Mapping Co., Inc. on September 23, 2016.



ORIGINAL STAMP IN GREEN

Description prepared by:

William K. Bruce
William K. Bruce
Professional Surveyor 7437
September 28, 2016

28480816

INDEXED ON MAP
4957 (2D)-2

10-6-14

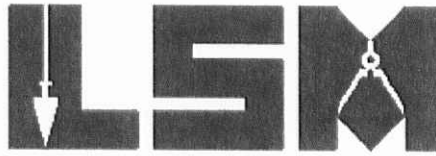
Lee Surveying and Mapping Co., Inc.



APPROVED

Land Surveys • Topography • Subdivisions • Construction Layout

117 N. Madriver St.
Bellefontaine OH 43311



Phone: (937) 593-7335
Fax: (937) 593-7444
surveys@lsminc.us

FARLEY 14.473 ACRES

Lying in Section 34, Town 4, Range 13, Miami Township, Logan County, Ohio.

Being out of the Robert A. Farley and Connie K. Farley original 36.00 acre tract as deeded and described in Official Record 80, Page 358 of the Logan County Records of Deeds and being more particularly described as follows:

Commencing on a 1 inch iron rod found on the northeast corner of the southeast quarter of Section 34 at P.I. Station 40 + 45.1 (Logan County Engineer's Field Book 700, Page 3) of County Highway 62 and the east line of Miami Township.

THENCE, with the east line of Section 34, the center-line of County Highway 62 (60 feet wide) and the east line of Miami Township, S 04°-29'-33"W, a distance of 2219.22 feet to a railroad spike found at the TRUE POINT OF BEGINNING, passing railroad spikes found at 1924.12 feet, 2069.22 feet, and 2144.22 feet.

THENCE, with the east line of Section 34, the center-line of County Highway 62 and the east line of Miami Township, S 04°-29'-33"W, a distance of 201.61 feet to a railroad spike found.

THENCE, with the lines of the Francis Paul Café 1.00 acre tract (O.R. 948, Pg. 748), the following two courses:

N 85°-24'-23"W, a distance of 158.28 feet to a 5/8 inch iron rod found, passing a 5/8 inch iron rod found at 29.82 feet.

S 04°-33'-44"W, a distance of 274.91 feet to a 5/8 inch iron rod found on the south line of Section 34, Miami Township and Logan County and also being the north line of Section 33, Harrison Township and Champaign County.

THENCE, with the south line of Section 34, Miami Township and Logan County and the north line of Section 33, Harrison Township and Champaign County, N 85°-24'-38"W, a distance of 1194.49 feet to a 5/8 inch iron rod found.

INDEXED ON MAP
4957 12D-3

Lee Surveying and Mapping Co., Inc.

Land Surveys • Topography • Subdivisions • Construction Layout

117 N. Madriver St.
Bellefontaine OH 43311



Phone: (937) 593-7335
Fax: (937) 593-7444
surveys@lsminc.us

THENCE, with the east line of the Robert A. Farley and Connie K. Farley original 100.00 acre tract (O.R. 319, Pg. 991), N 04°-29'-42"E, a distance of 552.01 feet to a 5/8 inch iron rod found.

THENCE, with the lines of the Shannon R. Shoe and Lisa B. Shoe 3.185 acre tract (O.R. 895, Pg. 734), the following nine courses:

S 81°-47'-46"E, a distance of 285.29 feet to a 5/8 inch iron rod found.

S 72°-48'-02"E, a distance of 140.55 feet to a 5/8 inch iron rod found.

S 76°-56'-29"E, a distance of 358.80 feet to a 5/8 inch iron rod found.

S 83°-00'-53"E, a distance of 202.20 feet to a 5/8 inch iron rod found.

N 67°-38'-13"E, a distance of 136.21 feet to a 5/8 inch iron rod found.

N 82°-26'-23"E, a distance of 145.23 feet to a 5/8 inch iron rod found.

S 89°-05'-36"E, a distance of 81.10 feet to a 5/8 inch iron rod found on the west right-of-way of County Highway 62.

S 04°-29'-34"W, a distance of 63.10 feet to a 5/8 inch iron rod found on the west right-of-way of County Highway 62.

S 85°-30'-26"E, a distance of 30.00 feet to the point of beginning.

Containing 14.473 acres, of which 0.139 acre is within the highway right-of-way.

Property is subject to any and all previous easements and rights-of-way of record.

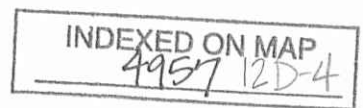
The basis for bearings is the east line of Section 34, being S 04°-29'-33"W, and all other bearings are from angles and distances measured in a field survey by Lee Surveying and Mapping Co., Inc. on September 23, 2016.



ORIGINAL STAMP IN GREEN

Description prepared by:

William K. Bruce
William K. Bruce
Professional Surveyor 7437
September 28, 2016



28480816

10-6-14

Lee Surveying and Mapping Co., Inc.



Land Surveys • Topography • Subdivisions • Construction Layout

117 N. Madriver St.
Bellefontaine OH 43311



Phone: (937) 593-7335
Fax: (937) 593-7444
surveys@lsminc.us

FARLEY 46.623 ACRES

Lying in Section 34, Town 4, Range 13, Miami Township, Logan County, Ohio.

Being all of the remainder of the Robert A. Farley and Connie K. Farley original 100.00 acre tract as deeded and described in Official Record 319, Page 991 of the Logan County Records of Deeds and being more particularly described as follows:

Beginning on a concrete monument found on the southwest corner of the southeast quarter of Section 34 on the south line of Miami Township and Logan County and the north line of Section 33, Harrison Township and Champaign County.

THENCE, with the west line of southeast quarter of Section 34 and the east line of the Don L. Baughman 82 acre tract (O.R. 950, Pg. 486, Parcel One, Second Tract) and the Samuel Eugene Harpest 59.19 acre tract (O.R. 660, Pg. 825), N 04°-34'-44"E, a distance of 1650.08 feet to a 5/8 inch iron rod set at the base of an old post found.

THENCE, with the south line of the said 59.19 acre tract, S 85°-19'-57"E, a distance of 1182.71 feet to a 12 inch concrete post found.

THENCE, with the west line of the Richard E. Wahlrab 21.726 acre tract (O.R. 932, Pg. 249), S 11°-22'-31"E, a distance of 478.76 feet to a point, referenced by a 5/8 inch iron rod set bearing S 85°-30'-12"E, a distance of 5.00 feet.

THENCE, with the west line of the Tonya R. Tipton 13.000 acre tract (O.R. 1170, Pg. 642), S 04°-29'-42"W, a distance of 272.95 feet to a 5/8 inch iron rod found.

THENCE, with the lines of the Shannon R. Shoe and Lisa B. Shoe 3.185 acre tract (O.R. 895, Pg. 734), the following three courses:

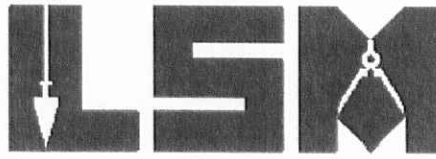
N 75°-29'-26"W, a distance of 300.00 feet to a 5/8 inch iron rod found.

S 04°-29'-42"W, a distance of 363.00 feet to a 5/8 inch iron rod found.

Lee Surveying and Mapping Co., Inc.

Land Surveys • Topography • Subdivisions • Construction Layout

117 N. Madriver St.
Bellefontaine OH 43311



Phone: (937) 593-7335
Fax: (937) 593-7444
surveys@lsmcinc.us

S 75°-29'-26"E, a distance of 300.00 feet to a 5/8 inch iron rod found.

THENCE, with the west line of the Robert A. Farley and Connie K. Farley original 36.00 acre tract (O.R. 80, Pg. 358), S 04°-29'-42"W, a distance of 552.01 feet to a 5/8 inch iron rod found on the south line of Section 34, Miami Township and Logan County and the north line of Section 33, Harrison Township and Champaign County.

THENCE, with the south line of Section 34, Miami Township and Logan County and the north line of Section 33, Harrison Township and Champaign County, N 85°-25'-12"W, a distance of 1316.05 feet to the point of beginning.

Containing 46.623 acres.

Property is subject to any and all previous easements and rights-of-way of record.

This parcel is to be attached to an adjoining tract of land and is not to be used as a separate and independent parcel.

The basis for bearings is the east line of Section 34, being S 04°-29'-33"W, and all other bearings are from angles and distances measured in a field survey by Lee Surveying and Mapping Co., Inc. on September 23, 2016.



Description prepared by:

William K. Bruce
William K. Bruce
Professional Surveyor 7437
September 28, 2016

28480816

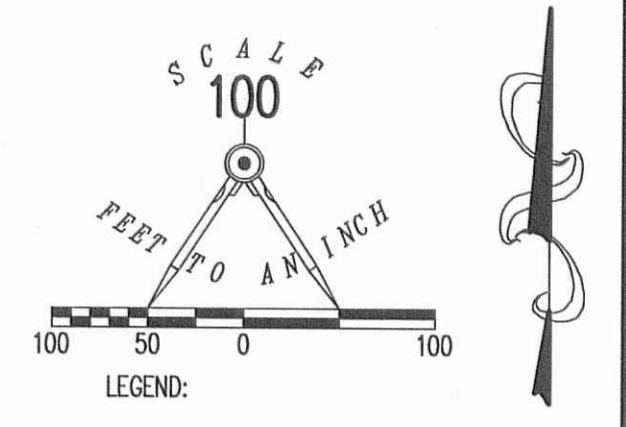
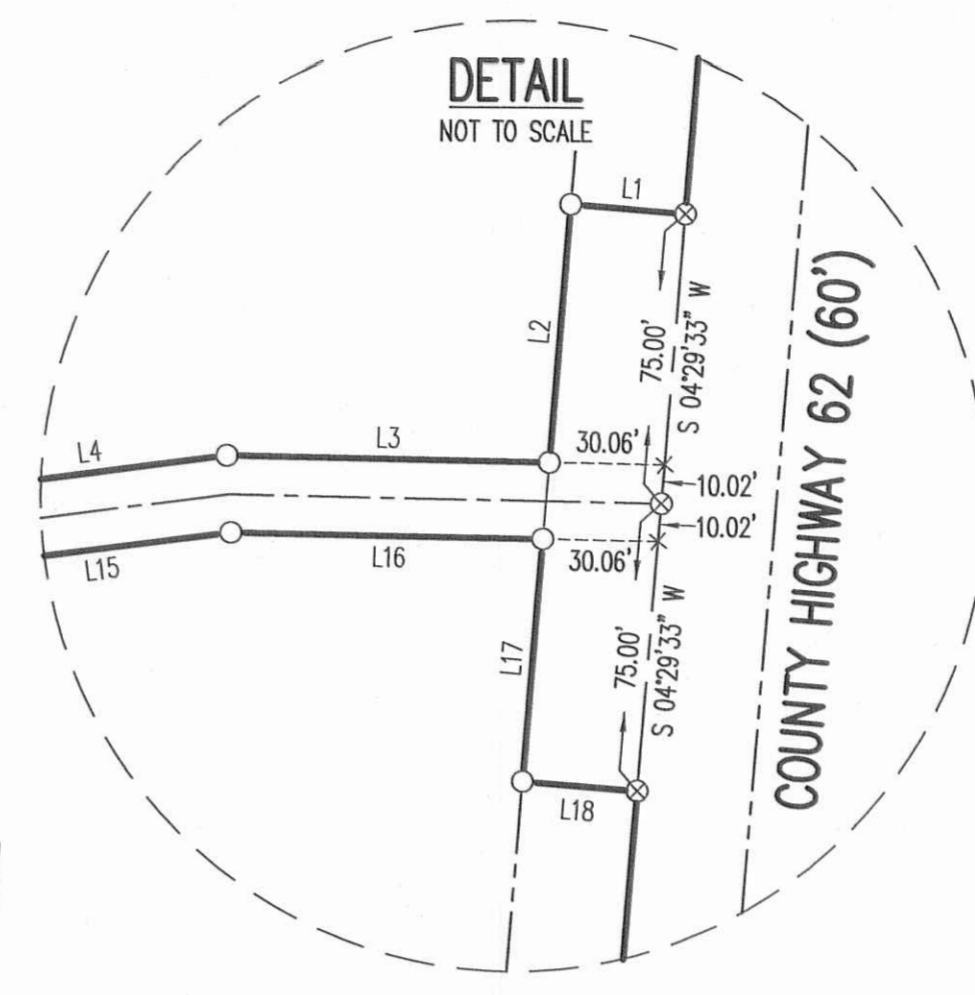
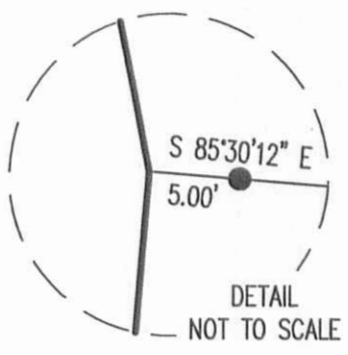
INDEXED ON MAP
4957 12D-6

SAMUEL EUGENE HARPEST
 59.19 ACRES
 O.R. 660, PG. 825

AT THE BASE OF AN OLD POST FOUND

S 85°19'57" E
 1182.71'

RICHARD E. WAHLRAB
 21.726 ACRES
 O.R. 932, PG. 249

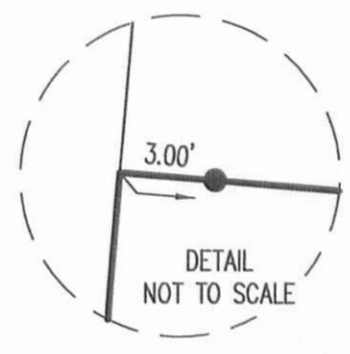


- LEGEND:
- ⊙ CONCRETE MONUMENT FOUND
 - ⊠ 12 INCH CONCRETE CORNER POST FOUND
 - ⊙ 1 INCH IRON ROD FOUND
 - ⊙ RAILROAD SPIKE FOUND
 - 5/8 INCH IRON ROD FOUND
 - 5/8 INCH IRON ROD SET WITH PLASTIC I.D. CAP STAMPED "LSM 7437"

LINE	BEARING	DISTANCE
L1	N 85°30'26" W	30.00'
L2	S 04°29'34" W	66.86'
L3	N 89°05'36" W	83.83'
L4	S 82°26'23" W	149.31'
L5	S 67°38'13" W	133.57'
L6	N 83°00'53" W	195.90'
L7	N 76°56'29" W	357.02'
L8	N 72°48'02" W	141.40'
L9	N 81°47'46" W	288.15'
L10	S 81°47'46" E	285.29'
L11	S 72°48'02" E	140.55'
L12	S 76°56'29" E	358.80'
L13	S 83°00'53" E	202.20'
L14	N 67°38'13" E	136.21'
L15	N 82°26'23" E	145.23'
L16	S 89°05'36" E	81.10'
L17	S 04°29'34" W	63.10'
L18	S 85°30'26" E	30.00'

46.623 ACRES
 ROBERT A. FARLEY AND
 CONNIE K. FARLEY
 ORIGINAL 100.00 ACRES
 O.R. 319, PG. 991

SHANNON R. SHOE
 AND LISA B. SHOE
 3.185 ACRES
 O.R. 885, PG. 734



TONYA R. TIPTON
 13.000 ACRES
 O.R. 1170, PG. 642

7.739 ACRES
 OF WHICH 0.100 ACRE IS WITHIN
 THE HIGHWAY RIGHT-OF-WAY

ROBERT A. FARLEY AND
 CONNIE K. FARLEY
 ORIGINAL 36.00 ACRES
 O.R. 80, PG. 358

14.473 ACRES
 OF WHICH 0.139 ACRE IS WITHIN
 THE HIGHWAY RIGHT-OF-WAY

FRANCOIS PAUL CAFE
 1.00 ACRE
 O.R. 948, PG. 748

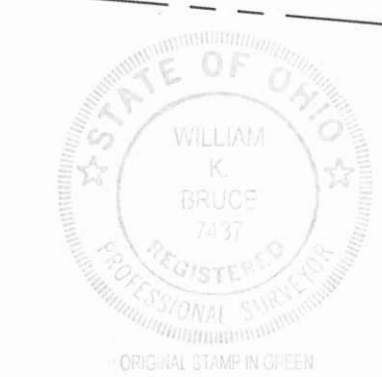
P.I. STATION 40+45.1
 LOGAN COUNTY ENGINEER'S
 FIELD BOOK 700, PG. 3

MIAMI TOWNSHIP
 UNION TOWNSHIP—(BASIS FOR BEARINGS)

COUNTY HIGHWAY 62 (60')

SURVEY OF TWO TRACTS OUT OF THE
 ROBERT A. FARLEY AND
 CONNIE K. FARLEY
 ORIGINAL 36.00 ACRE TRACT
 OFFICIAL RECORD 80, PAGE 358
 AND 46.623 ACRES BEING ALL
 OF THE REMAINDER OF THE
 ORIGINAL 100.00 ACRE TRACT
 OFFICIAL RECORD 319, PAGE 991
 SECTION 34, TOWN 4, RANGE 13
 MIAMI TOWNSHIP
 LOGAN COUNTY, OHIO

SURVEYED BY:
William K. Bruce
 WILLIAM K. BRUCE
 PROFESSIONAL SURVEYOR 7437
 SEPTEMBER 23, 2016



COPYRIGHT 2016 BY:
 LEE SURVEYING & MAPPING CO., INC.
 117 North Medinger Street
 BELLEFONTAINE, OHIO 43311
 (937) 593-7335
 WWW.LSMINC.US
 s u r v e y s @ l s m i n c . u s
 KSS 00816 28480816 L-2848-1

NOTE:
 THE 46.623 PARCEL IS TO BE ATTACHED TO AN ADJOINING
 TRACT OF LAND AND IS NOT TO BE USED AS A SEPARATE
 AND INDEPENDENT PARCEL.

THIS SURVEY WAS PREPARED IN THE ABSENCE OF
 A COMPLETE AND ACCURATE TITLE SEARCH AND
 DOES NOT GUARANTEE TITLE.

2 WORKING DAYS
BEFORE YOU DIG
 CALL TOLL FREE 800-362-2764
 OHIO UTILITIES PROTECTION SERVICE.



APPROVED

12-23-16

Lee Surveying and Mapping Co., Inc.

Land Surveys • Topography • Subdivisions • Construction Layout

117 N. Madriver St.
Bellefontaine OH 43311



Phone: (937) 593-7335
Fax: (937) 593-7444
surveys@lsminc.us

FARLEY 4.474 ACRES

Lying in Section 34, Town 4, Range 13, Miami Township, Logan County, Ohio.

Being out of the Robert A. Farley and Connie K. Farley original 36.00 acre tract as deeded and described in Official Record 80, Page 358 of the Logan County Records of Deeds and being more particularly described as follows:

Commencing on a 1 inch iron rod found on the northeast corner of the southeast quarter of Section 34 at P.I. Station 40+45.1 (Logan County Engineer's Filed Book 700, Page 3) of County Highway 62 and the east line of Miami Township.

THENCE, with the east line of Section 34 and Miami Township, and the center-line of County Highway 62 (60 feet wide), S 04°-29'-33"W, a distance of 2420.83 feet to a railroad spike found.

THENCE, with the north line of the Francis Paul Cafe 1.00 acre tract (O.R. 948, Pg. 748), N 85°-24'-23"W, a distance of 158.28 feet to a 5/8 inch iron rod found at the TRUE POINT OF BEGINNING.

THENCE, with the west line of the said 1.00 acre tract, S 04°-33'-44"W, a distance of 274.91 feet to a 5/8 inch iron rod found on the south line of Section 34 and Logan County and the north line of Champaign County.

THENCE, with the south line of Section 34 and Logan County and the north line of Champaign County, N 85°-24'-38"W, a distance of 708.91 feet to a 5/8 inch iron rod set.

THENCE, N 04°-33'-44"E, a distance of 274.96 feet to a 5/8 inch iron rod set.

THENCE, S 85°-24'-23"E, a distance of 708.91 feet to the point of beginning.

Containing 4.474 acres.

This parcel is to be attached to an adjoining tract of land and is not to be used as a separate and independent parcel.

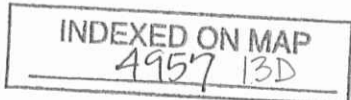
Property is subject to any and all previous easements and rights-of-way of record.

The basis for bearings is the east line of Section 34, being S 04°-29'-33"W, and all other bearings are from angles and distances measured in a field survey by Lee Surveying and Mapping Co., Inc. on December 14, 2016.



Description prepared by:

Jeffrey I. Lee
Professional Surveyor 6359
December 14, 2016



ORIGINAL STAMP IN GREEN

28481216

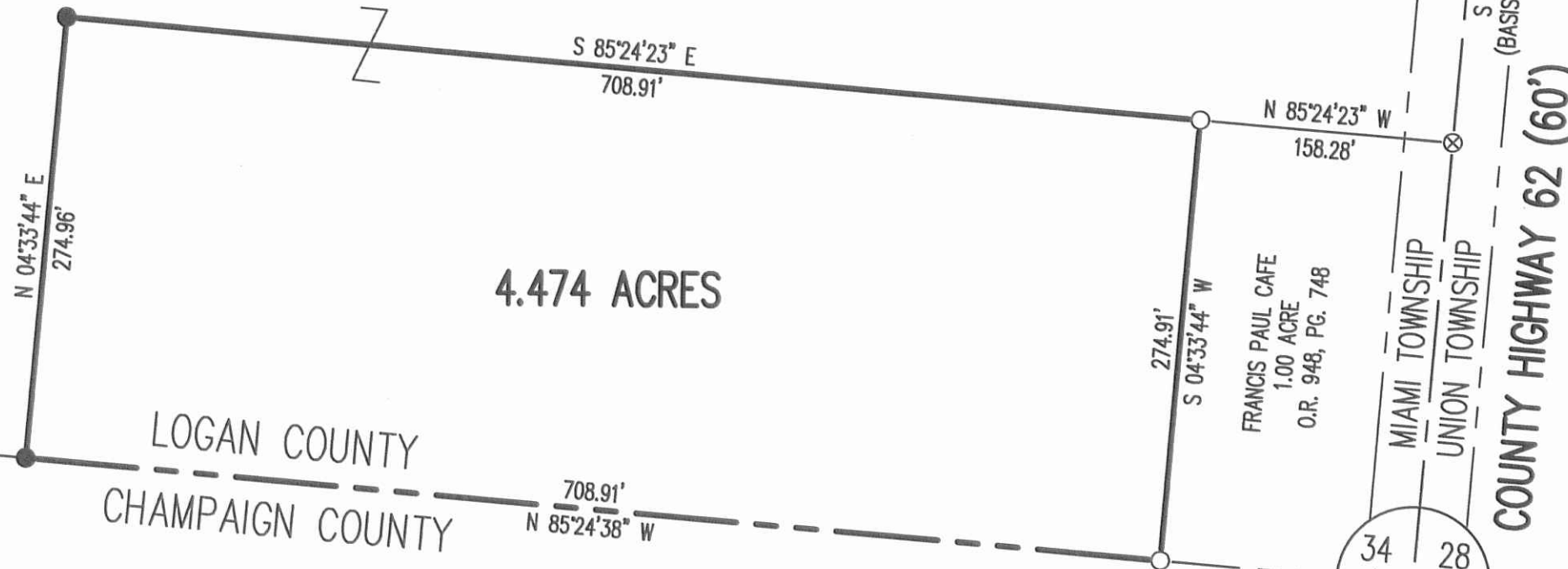
MEMBER: NATIONAL SOCIETY OF PROFESSIONAL SURVEYORS (NSPS)
PROFESSIONAL LAND SURVEYORS OF OHIO (PLSO)

NOTE:

THIS PARCEL IS TO BE ATTACHED TO AN ADJOINING TRACT OF LAND AND IS NOT TO BE USED AS A SEPARATE AND INDEPENDENT PARCEL.

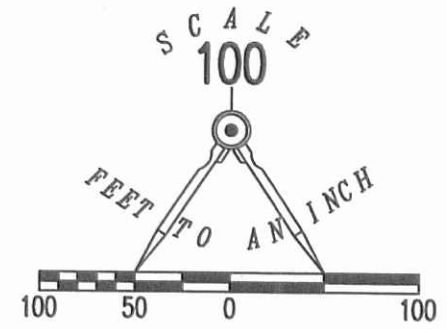
ROBERT A. FARLEY AND
CONNIE K. FARLEY
ORIGINAL 36.00 ACRES
O.R. 80, PG. 358

4.474 ACRES



COUNTY HIGHWAY 62

P.I. STATION 40+45.1
(LOGAN COUNTY ENGINEER'S
FIELD BOOK 700, PG. 3)



LEGEND:

- ⊕ 1 INCH IRON ROD FOUND
- ⊗ RAILROAD SPIKE FOUND
- 5/8 INCH IRON ROD FOUND
- 5/8 INCH IRON ROD SET WITH PLASTIC I.D. CAP STAMPED "LSM"

**SURVEY OF 4.474 ACRES OUT OF THE
ROBERT A. FARLEY AND
CONNIE K. FARLEY
ORIGINAL 36.00 ACRE TRACT
OFFICIAL RECORD 80, PAGE 358
SECTION 34, TOWN 4, RANGE 13
MIAMI TOWNSHIP
LOGAN COUNTY, OHIO**

SURVEYED BY:

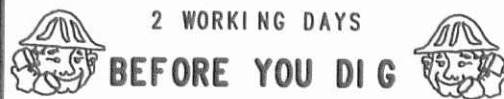
Jeffrey I. Lee
JEFFREY I. LEE
PROFESSIONAL SURVEYOR 6359
DECEMBER 13, 2016



COPYRIGHT 2016 BY:
LEE SURVEYING & MAPPING CO., INC.
117 North Madriver Street
BELLEFONTAINE, OHIO 43311
(937) 593-7335
WWW.LSMINC.US
surveys@lsminc.us

ORIGINAL STAMP IN GREEN KSS D1216 28481216 L-2848-3

THIS SURVEY WAS PREPARED IN THE ABSENCE OF A COMPLETE AND ACCURATE TITLE SEARCH AND DOES NOT GUARANTEE TITLE.



CALL TOLL FREE **800-362-2764**

OHIO UTILITIES PROTECTION SERVICE

INDEXED ON MAP
4957 13P

11-14-2023

APPROVED



EDWARDS SURVEYING

110 South Main Street
Urbana, Ohio 43078
(937) 653-6508



LEGAL DESCRIPTION FOR KING'S 2.500 ACRE TRACT

Being situate in the State of Ohio, County of Logan, Township of Miami, and being a part of the Southeast Quarter of Section 34, Town 4, Range 13, B.T.M.R.S., and being more particularly described as follows:

Beginning for reference at a Railroad Spike found on the centerline of County Road 62 (60' right-of-way) at the Southeast corner of Section 34, also being on the Logan-Champaign County line and at the Southeast corner of Miami Township, the Southwest corner of Union Township, and at the Southwest corner of Section 28, Town 4, Range 13, from which a 12"x12" concrete County Line Monument bears N-86°01'58"-W, 20.00'(feet);

Thence with the centerline of County Road 62, the East line of Section 34, the West line of Section 28, and the Miami-Union Township line, N-5°24'39"-E, 771.66'(feet) to a Railroad Spike found at the Northeast corner of a 7.739 acre tract conveyed to Jacob G. Hurley by deed recorded in Official Record 241, Page 579, Parcel I, passing for reference a Railroad Spike found at 275.00'(feet);

Thence with the North line of the 7.739 acre tract, N-84°35'48"-W, 1093.05'(feet) to an iron bar set at the **PRINCIPLE PLACE OF BEGINNING** for the tract hereinafter described, passing for reference a 5/8" diameter iron bar found on the right-of-way line of County Road 62 at 30.00'(feet);

Thence continuing with the North line of the 7.739 acre tract, N-84°35'48"-W, 260.03'(feet) to an iron bar found on an East line of a 3.185 acre tract conveyed to Jacob G. Hurley by deed recorded in Official Record 1241, Page 576;

Thence with an East line of the 3.185 acre tract and with an East line of a 46.623 acre tract conveyed to Jacob G. Hurley by deed recorded in Official Record 1241, Page 579, Parcel II, N-5°24'23"-E, 418.82'(feet) to a 6" diameter wood post found at the Southwest corner of a 21.726 acre tract conveyed to Richard E. Wahlrab by deed recorded in Official Record 932, Page 249, passing for reference a 5/8" diameter iron bar found at 145.55'(feet);

Thence with the South line of the 21.726 acre tract, S-84°35'20"-E, 260.03'(feet) to a point, passing for reference a 5/8" diameter iron bar found at 5.00'(feet);

Thence S-5°24'23"-W, 418.78'(feet) to the place of beginning, passing for reference an iron bar set at 5.00'(feet).

Containing 2.500 acres but being subject to the rights of all legal highways and all easements of record.

Being a part of a 13.00 acre tract conveyed to Dwayne King by deed recorded in Official Record 1275, Page 4, of the Logan County Records.

The herein described tract is to be attached to an adjoining parcel and is not to be used as a separate and independent tract.

The foregoing description prepared by and in accordance with a survey by William D. Edwards, Professional surveyor No. 7574, November 3, 2023. All iron bars set are 5/8"x30" iron re-bar with a yellow plastic cap stamped "EDWARDS PS 7574". Bearings are based on the centerline of County Road 62 per an assumed bearing of N-5°24'39"-E.



William D. Edwards

William D. Edwards, P.S. 7574

INDEXED ON MAP
4957

Lee Surveying and Mapping Co., Inc.

Land Surveys • Topography • Subdivisions • Construction Layout

117 N. Madriver St.
Bellefontaine OH 43311



Phone: (937) 593-7335
Fax: (937) 593-7444

FARLEY 3.185 ACRES

Lying in Section 34, Town 4, Range 13, Miami Township, Logan County, Ohio.

Being out of the Robert A. Farley and Connie K. Farley 36 acre tract and original 100 acre tract as deeded and described in Official Record 80, Page 358 and Official Record 319, Page 991 of the Logan County Records of Deeds and being more particularly described as follows:

Commencing on a 1 inch iron rod found at P.I. Station 40+45.1 (Logan County Engineer's Field Book 700, Page 3) of County Highway 62 on the east line of Section 34, the east line of Miami Township and the west line of Union Township.

THENCE, with the center-line of County Highway 62 (60 feet wide), the east line of Section 34, the east line of Miami Township and the west line of Union Township, S 4°-29'-33"W, a distance of 2069.22 feet to a railroad spike set at the TRUE POINT OF BEGINNING.

THENCE, with the center-line of County Highway 62, the east line of Section 34, the east line of Miami Township and the west line of Union Township, S 4°-29'-33"W, a distance of 150.00 feet to a railroad spike set, passing a railroad spike set at 75.00 feet.

THENCE, N 85°-30'-26"W, a distance of 30.00 feet to a 5/8 inch iron rod set on the west right-of-way of County Highway 62.

THENCE, with the west right-of-way of County Highway 62, N 4°-29'-33"E, a distance of 63.10 feet to a 5/8 inch iron rod set.

THENCE, N 89°-05'-36"W, a distance of 81.10 feet to a 5/8 inch iron rod set.

THENCE, S 82°-26'-23"W, a distance of 145.23 feet to a 5/8 inch iron rod set.

THENCE, S 67°-38'-13"W, a distance of 136.21 feet to a 5/8 inch iron rod set.

THENCE, N 83°-00'-53"W, a distance of 202.20 feet to a 5/8 inch iron rod set.

THENCE, N 76°-56'-29"W, a distance of 358.80 feet to a 5/8 inch iron rod set.

THENCE, N 72°-48'-02"W, a distance of 140.55 feet to a 5/8 inch iron rod set.

THENCE, N 81°-47'-46"W, a distance of 285.29 feet to a 5/8 inch iron rod set.

THENCE, N 75°-29'-26"W, a distance of 300.00 feet to a 5/8 inch iron rod set.

THENCE, N 4°-29'-42"E, a distance of 363.00 feet to a 5/8 inch iron rod set.

THENCE, S 75°-29'-26"E, a distance of 300.00 feet to a 5/8 inch iron rod set.

THENCE, with the west line of the James R. McDonald 13.00 acre tract (O.R. 583, Pg. 19) and west line extended, S 4°-29'-42"W, a distance of 342.96 feet to a 5/8 inch iron rod set.

THENCE, S 81°-47'-46"E, a distance of 288.15 feet to a 5/8 inch iron rod set.

THENCE, S 72°-48'-02"E, a distance of 141.40 feet to a 5/8 inch iron rod set.

THENCE, S 76°-56'-29"E, a distance of 357.02 feet to a 5/8 inch iron rod set.

Lee Surveying and Mapping Co., Inc.

Land Surveys • Topography • Subdivisions • Construction Layout

117 N. Madriver St.
Bellefontaine OH 43311



Phone: (937) 593-7335
Fax: (937) 593-7444

THENCE, S 83°-00'-53"E, a distance of 195.90 feet to a 5/8 inch iron rod set.

THENCE, N 67°-38'-13"E, a distance of 133.57 feet to a 5/8 inch iron rod set.

THENCE, N 82°-26'-23"E, a distance of 149.31 feet to a 5/8 inch iron rod set.

THENCE, S 89°-05'-36"E, a distance of 83.83 feet to a 5/8 inch iron rod set on the west right-of-way of County Highway 62.

THENCE, with the west right-of-way of County Highway 62, N 4°-29'-33"E, a distance of 66.86 feet to a 5/8 inch iron rod set.

THENCE, S 85°-30'-26"E, a distance of 30.00 feet to the point of beginning.

Containing 3.185 acres, of which 0.103 acre is within the highway right-of-way.

The basis for bearings is the east line of Section 34, being S 4°-29'-33"W, and all other bearings are from angles and distances measured in a field survey by Lee Surveying and Mapping Co., Inc. on September 26, 2007.

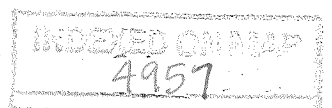


Description prepared by:

A handwritten signature in black ink, appearing to read 'William K. Bruce'.

William K. Bruce
Professional Surveyor 7437
September 27, 2008

2848087



REC'D 10-2-01 DMJ/OK

Lee Surveying and Mapping Co., Inc.

Land Surveys • Topography • Subdivisions • Construction Layout

117 N. Madriver St.
Bellefontaine OH 43311



Phone: (937) 593-7335
Fax: (937) 593-7444

FARLEY 20.00 FEET WIDE INGRESS/EGRESS EASEMENT

Lying in Section 34, Town 4, Range 13, Miami Township, Logan County, Ohio.

Being a 20.00 feet wide ingress/egress easement over the Robert A. Farley and Connie K. Farley 36 acre tract as deeded and described in Official Record 80, Page 358 of the Logan County Records of Deeds and being more particularly described as follows:

Commencing on a 1 inch iron rod found at P.I. Station 40+45.1 (Logan County Engineer's Field Book 700, Page 3) of County Highway 62 on the east line of Section 34, the east line of Miami Township and the west line of Union Township.

THENCE, with the center-line of County Highway 62 (60 feet wide), the east line of Section 34, the east line of Miami Township and the west line of Union Township, S 4°-29'-33"W, a distance of 2069.22 feet to a railroad spike set.

THENCE, with the center-line of County Highway 62, the east line of Section 34, the east line of Miami Township and the west line of Union Township, S 4°-29'-33"W, a distance of 64.98 feet to a point at the TRUE POINT OF BEGINNING.

THENCE, with the center-line of County Highway 62, the east line of Section 34, the east line of Miami Township and the west line of Union Township, S 4°-29'-33"W, a distance of 20.04 feet to a point, passing a railroad spike set at 10.02 feet.

THENCE, N 89°-05'-36"W, a distance of 30.06 feet to a 5/8 inch iron rod set.

THENCE, N 89°-05'-36"W, a distance of 81.10 feet to a 5/8 inch iron rod set.

THENCE, S 82°-26'-23"W, a distance of 145.23 feet to a 5/8 inch iron rod set.

THENCE, S 67°-38'-13"W, a distance of 136.21 feet to a 5/8 inch iron rod set.

THENCE, N 83°-00'-53"W, a distance of 202.20 feet to a 5/8 inch iron rod set.

THENCE, N 76°-56'-29"W, a distance of 358.80 feet to a 5/8 inch iron rod set.

THENCE, N 72°-48'-02"W, a distance of 140.55 feet to a 5/8 inch iron rod set.

THENCE, N 81°-47'-46"W, a distance of 285.29 feet to a 5/8 inch iron rod set.

THENCE, with an east line of the Robert A. Farley and Connie K. Farley original 100 acre tract (O.R. 319, Pg. 991), N 4°-29'-42"E, a distance of 20.04 feet to a 5/8 inch iron rod set.

THENCE, S 81°-47'-46"E, a distance of 288.15 feet to a 5/8 inch iron rod set.

THENCE, S 72°-48'-02"E, a distance of 141.40 feet to a 5/8 inch iron rod set.

THENCE, S 76°-56'-29"E, a distance of 357.02 feet to a 5/8 inch iron rod set.

THENCE, S 83°-00'-53"E, a distance of 195.90 feet to a 5/8 inch iron rod set.

THENCE, N 67°-38'-13"E, a distance of 133.57 feet to a 5/8 inch iron rod set.

INDEXED ON MAP
4957

Lee Surveying and Mapping Co., Inc.

Land Surveys • Topography • Subdivisions • Construction Layout

117 N. Madriver St.
Bellefontaine OH 43311



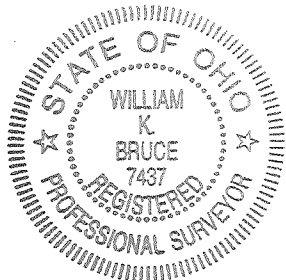
Phone: (937) 593-7335
Fax: (937) 593-7444

THENCE, N 82°-26'-23"E, a distance of 149.31 feet to a 5/8 inch iron rod set.

THENCE, S 89°-05'-36"E, a distance of 83.83 feet to a 5/8 inch iron rod set on the west right-of-way of County Highway 62.

THENCE, S 89°-05'-36"E, a distance of 30.06 feet to the point of beginning.

The basis for bearings is the east line of Section 34, being S 4°-29'-33"W, and all other bearings are from angles and distances measured in a field survey by Lee Surveying and Mapping Co., Inc. on September 26, 2007.



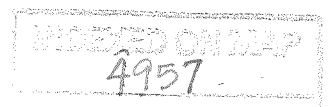
ORIGINAL STAMP IN GREEN

Description prepared by:

A handwritten signature in black ink that reads 'William K. Bruce'.

William K. Bruce
Professional Surveyor 7437
September 27, 2008

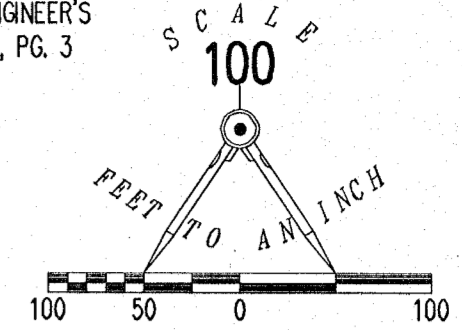
2848087



REV'D 10-2-07 SWM OK

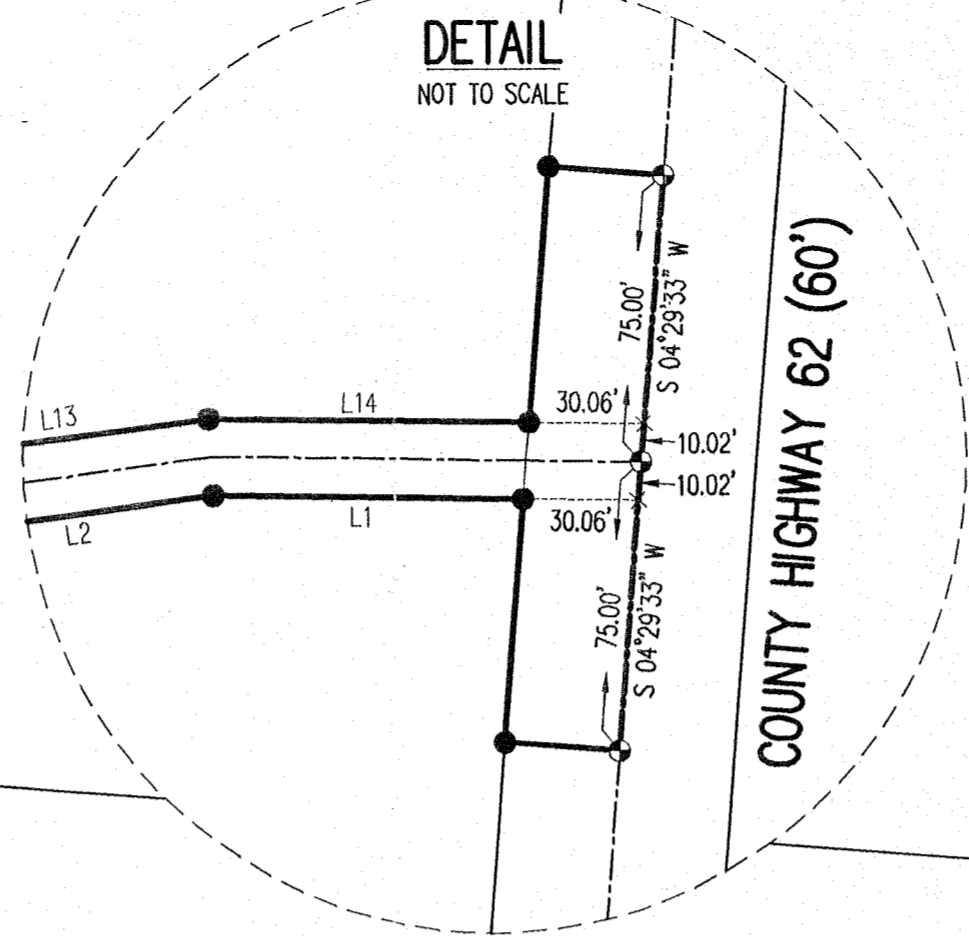
COUNTY HIGHWAY 62

P.I. STATION 40+45.1
LOGAN COUNTY ENGINEER'S
FIELD BOOK 700, PG. 3



LEGEND:

- ⊙ 1 INCH IRON ROD FOUND
- ⊗ RAILROAD SPIKE FOUND
- ⊕ RAILROAD SPIKE SET
- 5/8 INCH IRON ROD SET
- 5/8 INCH IRON ROD FOUND



LINE	BEARING	DISTANCE
L1	N 89°05'36" W	81.10'
L2	S 82°26'23" W	145.23'
L3	S 67°38'13" W	136.21'
L4	N 83°00'53" W	202.20'
L5	N 76°56'29" W	358.80'
L6	N 72°48'02" W	140.55'
L7	N 81°47'46" W	285.29'
L8	S 81°47'46" E	288.15'
L9	S 72°48'02" E	141.40'
L10	S 76°56'29" E	357.02'
L11	S 83°00'53" E	195.90'
L12	N 67°38'13" E	133.57'
L13	N 82°26'23" E	149.31'
L14	S 89°05'36" E	83.83'

JAMES R. McDONALD
13.00 ACRES
O.R. 583, PG. 19

3.185 ACRES
OF WHICH 0.103 ACRE IS WITHIN
THE HIGHWAY RIGHT-OF-WAY
(2.462 ACRES)

ROBERT A. FARLEY AND
CONNIE K. FARLEY
ORIGINAL 100 ACRES
O.R. 319, PG. 991

ROBERT A. FARLEY AND
CONNIE K. FARLEY
36 ACRES
O.R. 80, PG. 358

SURVEY OF 3.185 ACRES OUT OF THE
ROBERT A. FARLEY AND
CONNIE K. FARLEY
36 ACRE TRACT AND
ORIGINAL 100 ACRE TRACT
OFFICIAL RECORD 80, PAGE 358
OFFICIAL RECORD 319, PAGE 991
SECTION 34, TOWN 4, RANGE 13
MIAMI TOWNSHIP
LOGAN COUNTY, OHIO

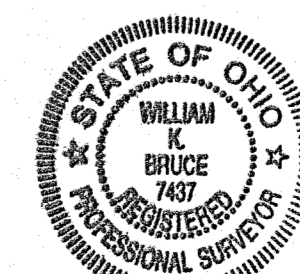
SURVEYED BY:

W.K.B.
WILLIAM K. BRUCE
PROFESSIONAL SURVEYOR 7437
SEPTEMBER 26, 2007

COPYRIGHT 2007 BY:
LEE SURVEYING & MAPPING CO., INC.
117 North Madriver Street
BELLEFONTAINE, OHIO 43311
(937) 593-7335

surveys@lsminc.us

KSS D0907 2848087 L-2848-2



ORIGINAL STAMP IN GREEN

2 WORKING DAYS
BEFORE YOU DIG
CALL TOLL FREE 800-362-2764
OHIO UTILITIES PROTECTION SERVICE

INDEXED ON MAP
4957