

Atterholt to Snow Survey Description  
April, 1971

Being situated in Miami Township, Logan County, Ohio;  
and being a part of Section 35, Town 4, Range B.

Beginning at a iron where the west line of said Section  
35 intersects the center line of State Route 508.

Thence with the center of State Route 508 S 52° - 59'E  
348.3 feet to a iron.

Thence S 37° - 01'W 563.0 feet to a iron in the west  
line of Section 35, passing thru a iron at 60.0 feet.

Thence N 5° - 16'E 662.0 feet to the place of beginning,  
passing thru a iron at 591.4 feet.

Containing 2.25 acres more or less. Being subject to  
right of way easements of State Route 508. Being surveyed  
from a 36.99 acre tract.

6/35 1D

INDEXED ON MAP

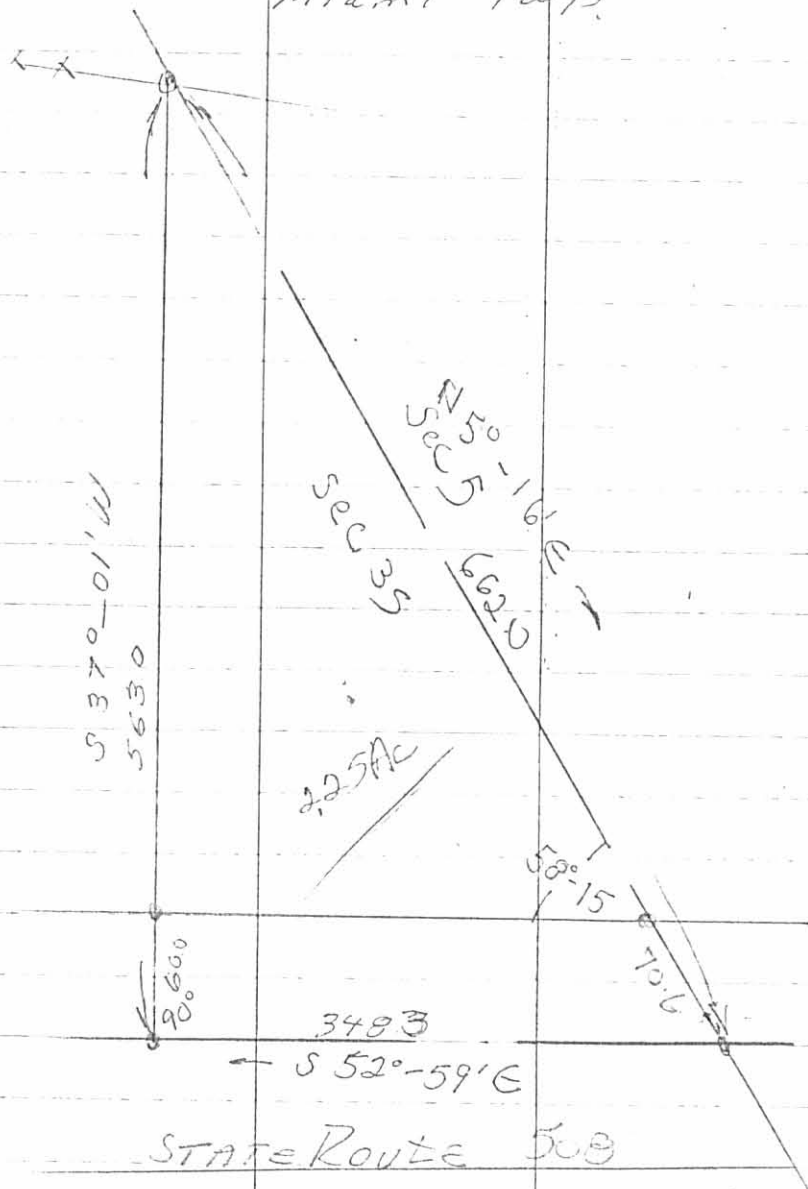
---

Owen K. Shirk  
Surveyor 4271

Atterholt to Snow  
Sec 35; Town 4; Range 13  
Miami Twp.

April 9 '71

41



6135 IP

INDEXED ON MAP

filed