

Lee Surveying and Mapping Co.



Farm Surveys • Lot Surveys • Topography • Subdivisions • Construction Layout

855 EAST SANDUSKY AVENUE
BELLEFONTAINE, OHIO 43311

(513) 593-5780

CLAYTON M. LEE, P.S.
JEFFREY I. LEE, P.S.

MARVIN WARD SURVEY

Lying in Section 11, T-3, R-13, Miami Township, Logan County, Ohio and being out of that 6.90 acre tract deeded and described in Volume 155, Page 308 of the Logan County Records of Deeds and more particularly described as follows:

Beginning at the northwest corner of said 6.90 acres at a spike set on the center-line of Township Road 71. This point also marking the north-east corner of a 1.00 acre tract (Volume 293, Page 109).

THENCE, S 0°-23' W, a distance of 348.00 feet to an iron rod set at a corner post at the southwest corner of said 6.90 acres. Passing an iron rod set on the road right-of-way at 20.00 feet.

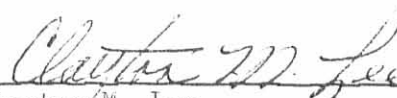
THENCE, with the south line of said 6.90 acres, N 89°-40'-40" E, a distance of 139.00 feet to an iron rod.

THENCE, parallel to the west line, N 0°-23' E, a distance of 347.22 feet to an iron spike set on the center-line of Township Road 71.

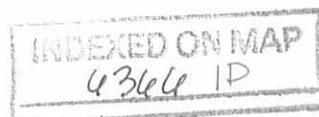
THENCE, with said center-line, WEST, a distance of 139.00 feet to the point of beginning. Containing 1.11 acre.

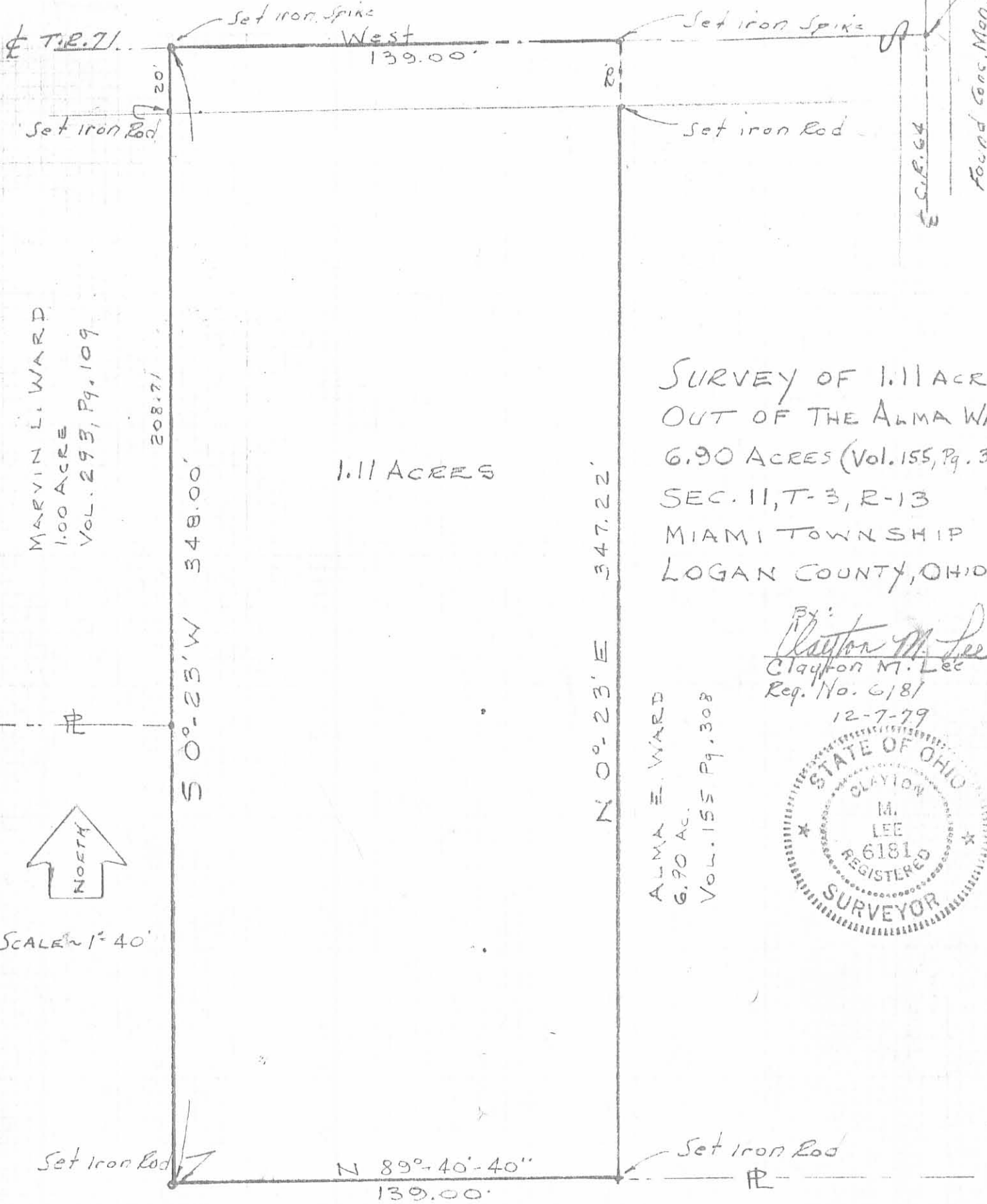
Last preceding deed reference: Volume 155, Page 308.

Surveyed by:



Clayton M. Lee
Reg. Surveyor No. 6181
12-7-79





MARVIN L. WARD
1.00 ACRE
VOL. 293, Pg. 109

208.71

S 0°-23' W 348.00'

1.11 ACRES

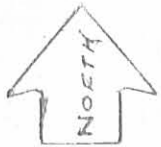
N 0°-23' E 347.22'

SURVEY OF 1.11 ACRES
OUT OF THE ALMA WARD
6.90 ACRES (Vol. 155, Pg. 308)
SEC. 11, T-3, R-13
MIAMI TOWNSHIP
LOGAN COUNTY, OHIO

By: Clayton M. Lee
Clayton M. Lee
Reg. No. 6181
12-7-79



ALMA E. WARD
6.90 AC.
VOL. 155 Pg. 308



SCALE 1"=40'

Set Iron Rod

N 89°-40'-40"
139.00'

Set Iron Rod

H. HOLSBERY
29.35 AC.

6366 1P

INDEXED ON MAP

LEE SURVEYING & MAPPING CO.
855 E. Sandusky Ave.
BELLEFONTAINE, OHIO 43311
(513) 593-5780

L-662-5