

Lee Surveying and Mapping Co.



Farm Surveys • Lot Surveys • Topography • Subdivisions • Construction Layout

855 EAST SANDUSKY AVENUE
BELLEFONTAINE, OHIO 43311

(513) 593-5780

CLAYTON M. LEE, P.S.
JEFFREY I. LEE, P.S.

HOLMES I. BELL (0.352 ACRE)

Lying in Section 29, T-3, R-13, Miami Township, Logan County, Ohio.

Being out of that 20 acre tract lying in the name of Holmes I. Bell (Volume 394, Page 596, Tract 2) and more particularly described as follows:

Beginning at a harrow tooth set on the center-line of County Road No. 70 a distance of 235.67 feet westerly along said center-line from the south-east corner of said Bell 5.00 acre tract (Tract 1). The same being the southwest corner of David Heath's 15.97 acre tract.

THENCE, with said center-line of County Road 70, S 75°-29' W, a distance of 76.50 feet to a harrow tooth set for the southwest corner of this survey.

THENCE, N 4°-56' W, a distance of 253.64 feet to an iron rod, passing an iron rod set on the north line of County Road 70 at 25.35 feet.

THENCE, N 81°-25'-30" E, a distance of 47.00 feet to an iron rod.

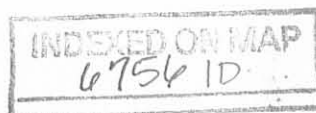
THENCE, S 11°-36'-20" E, a distance of 245.55 feet to the point of beginning, passing an iron rod set on the north line of County Road 70 at 220.52 feet. Containing 0.352 acre.

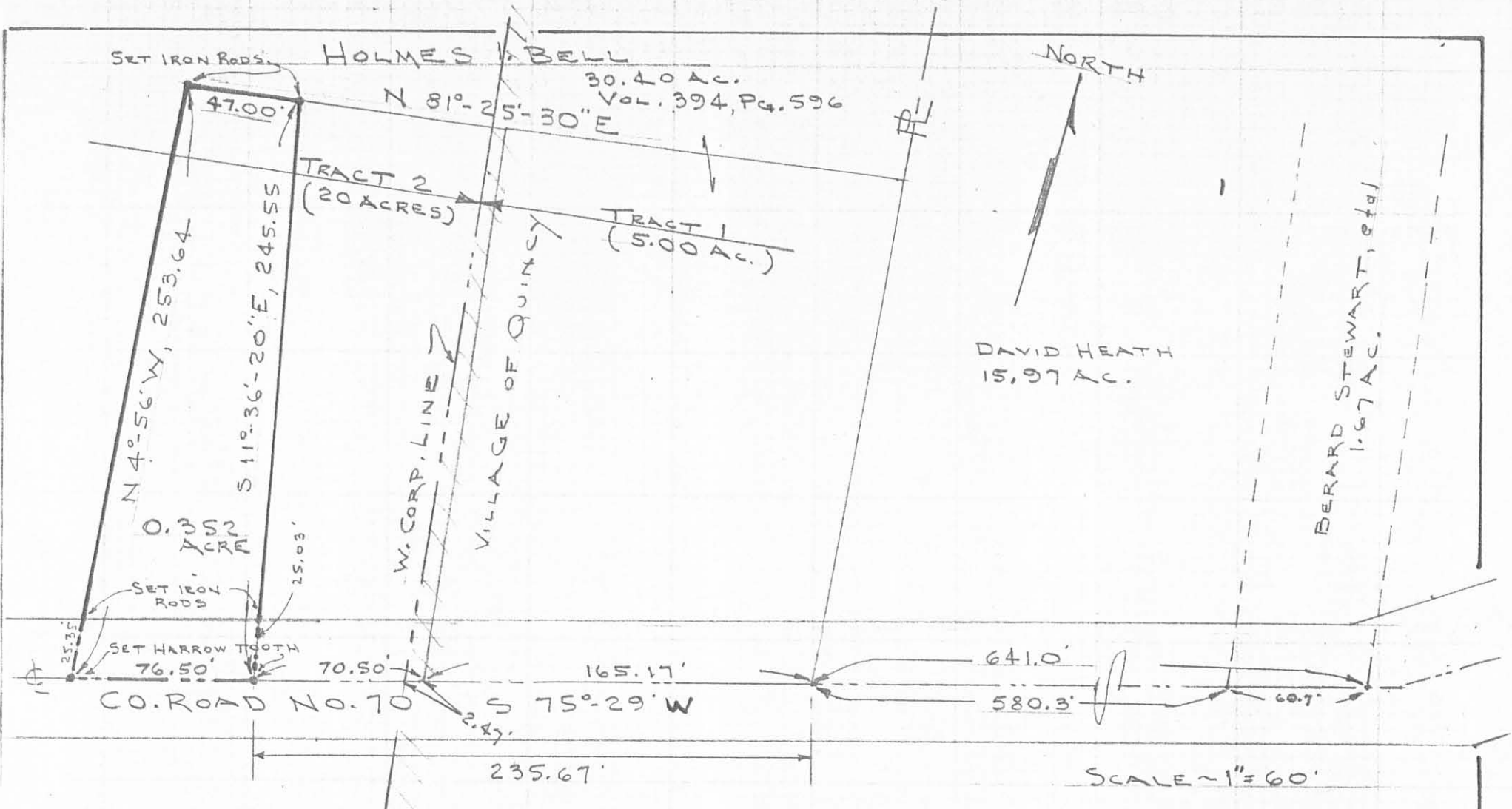
Last previous deed reference: Volume 394, Page 596 (Tract 2).



Prepared by:

Clayton M. Lee
Clayton M. Lee
Reg. Surveyor No. 6181
7-2-82





NOTE:
 THESE 3 LOTS ARE PRESENTLY
 OCCUPIED AND SERVED BY EXISTING
 VILLAGE OF QUINCY SAN. SEWER SYSTEM

6756 IP
 INDEXED ON MAP



SURVEY OF LOTS OUT OF THE
 HOLMES I. BELL LANDS
 SEC. 29, T-3, R-13,
 MIAMI TOWNSHIP,
 LOGAN COUNTY, OHIO

BY: Clayton M. Lee
 CLAYTON M. LEE
 REG. SURVEYOR 6181

Lee Surveying and Mapping Co.



Farm Surveys • Lot Surveys • Topography • Subdivisions • Construction Layout

855 EAST SANDUSKY AVENUE
BELLEFONTAINE, OHIO 43311

(513) 593-5780

CLAYTON M. LEE, P.S.
JEFFREY I. LEE, P.S.

H.I. BELL TO RANDAL E. AND CATHY ANN BELL
(0.88 ACRE)

Lying in Section 29, T-3, R-13, Miami Township, Logan County, Ohio and mainly in the Village of Quincy.

Being out of that 5.00 acre tract lying in the name of Holmes I. Bell (Volume 394, Page 596, Tract 1) and a 20 acre tract (Tract 2) and more particularly described as follows:

Beginning at a harrow tooth set on the center-line of County Road No. 70 at the southeast corner of said 5.00 acre tract. The same being the southwest corner of the David Heath 15.97 acre tract.

THENCE, with the said center-line of County Road 70, S 75°-29' W, a distance of 165.17 feet to a harrow tooth.

THENCE, N 7°-23'-40" W, a distance of 237.96 feet to an iron rod, passing out of the Corporation of Quincy, and into aforementioned 20 acre tract at 89.2 feet.

THENCE, N 81°-25'-30" E, a distance of 170.41 feet to an iron rod set on the east line of said 5.00 acres, passing back into said 5.00 acre tract and the Village of Quincy at 4.62 feet.

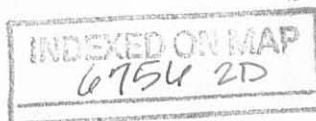
THENCE, with the east line of said 5.00 acre tract, S 5°-43' E, a distance of 221.09 feet to the point of beginning. Containing 0.88 acre, of which 0.872 acre lies in the Village of Quincy and is out of the said 5.00 acre tract and 0.008 acre lies outside said corporation and is out of the 20 acre tract.

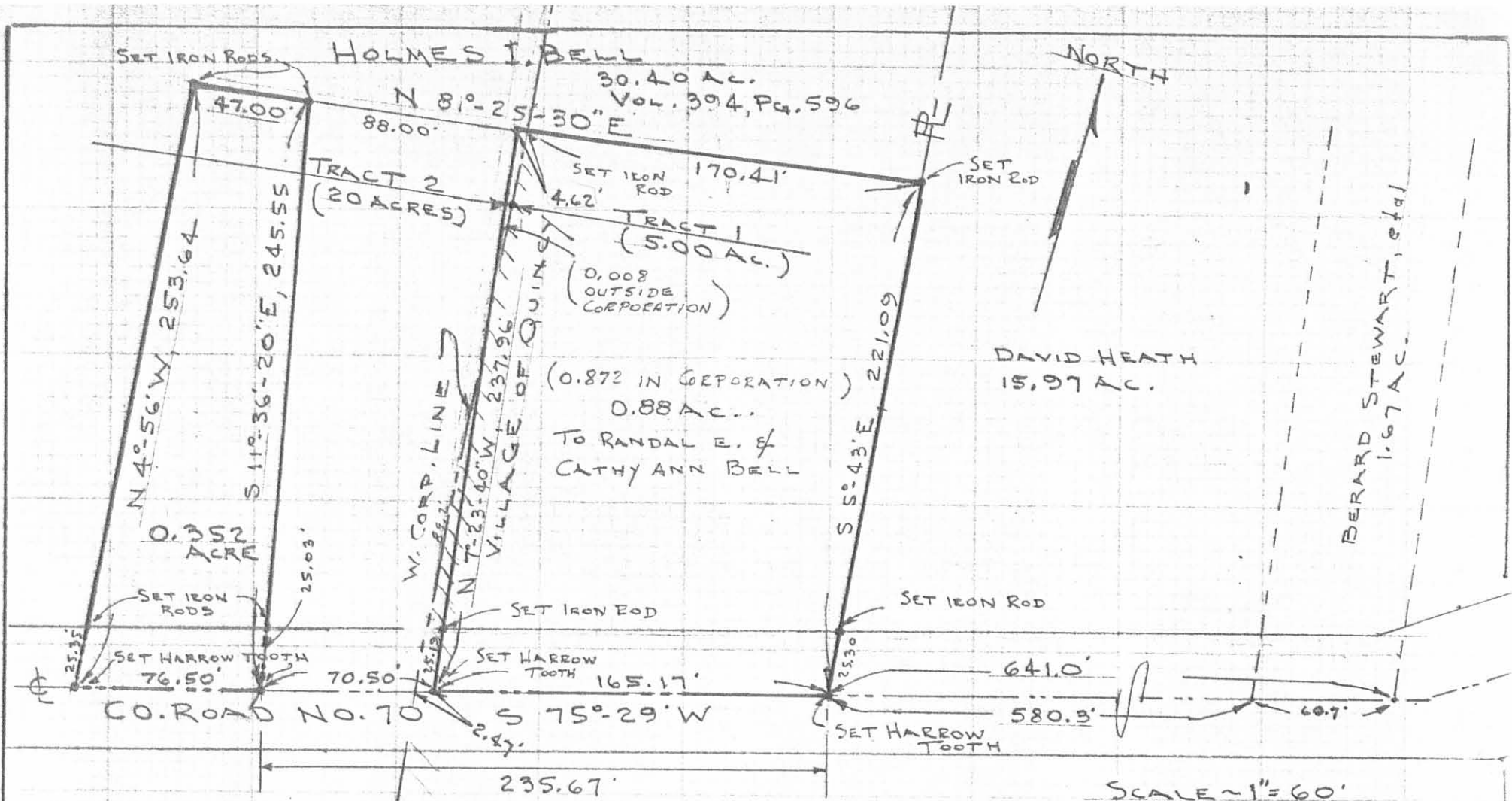
Last previous deed reference: Volume 394, Page 596.



Prepared by:

Clayton M. Lee
Clayton M. Lee
Reg. Surveyor No. 6181
7-7-82





NOTE:
THESE 3 LOTS ARE PRESENTLY OCCUPIED AND SERVED BY EXISTING VILLAGE OF QUINCY SAN. SEWER SYSTEM

67562P

INDEXED ON MAP



SURVEY OF LOTS OUT OF THE
HOLMES I. BELL LANDS
SEC. 29, T-3, R-13,
MIAMI TOWNSHIP,
LOGAN COUNTY, OHIO

By: *Clayton M. Lee*
CLAYTON M. LEE
REG. SURVEYOR 6181

Lee Surveying and Mapping Co.



Farm Surveys • Lot Surveys • Topography • Subdivisions • Construction Layout

855 EAST SANDUSKY AVENUE
BELLEFONTAINE, OHIO 43311

(513) 593-5780

CLAYTON M. LEE, P.S.
JEFFREY I. LEE, P.S.

HOLMES BELL SURVEY

Lying in Section 29, T-3, R-13, Miami Township, Logan County, Ohio.

Being out of that Holmes Bell land as deeded and described in Volume 394, Page 596 of the Logan County Records of Deeds and being more particularly described as follows:

Beginning at a harrow tooth found on the center-line of County Road 70 marking the southwest corner of the Randall E. Bell 0.872 acre lot and being westerly, along said center-line, a distance of 165.17 feet from the southwest corner of the David Heath land (Volume 301, Page 363).

THENCE, with the said center-line of County Road 70, S 75°-29' W, a distance of 70.50 feet to a harrow tooth found at the southeast corner of the Randy Kean 0.352 acre lot.

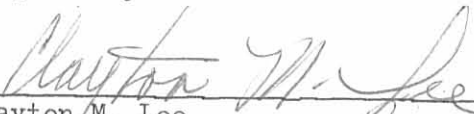
THENCE, with the east line of said 0.352 acre lot, N 11°-36'-20" W, a distance of 245.55 feet to a 5/8" iron rod at the northeast corner of said 0.352 acre lot.

THENCE, N 81°-25'-30" E, a distance of 88.00 feet to a 5/8" iron rod at the northwest corner of the aforementioned 0.872 acre lot.

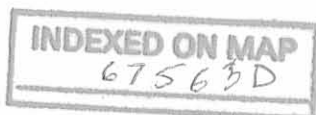
THENCE, with the west line of said 0.872 acre lot, S 7°-23'-40" E, a distance of 237.96 feet to the point of beginning.

Containing 0.439 acre.

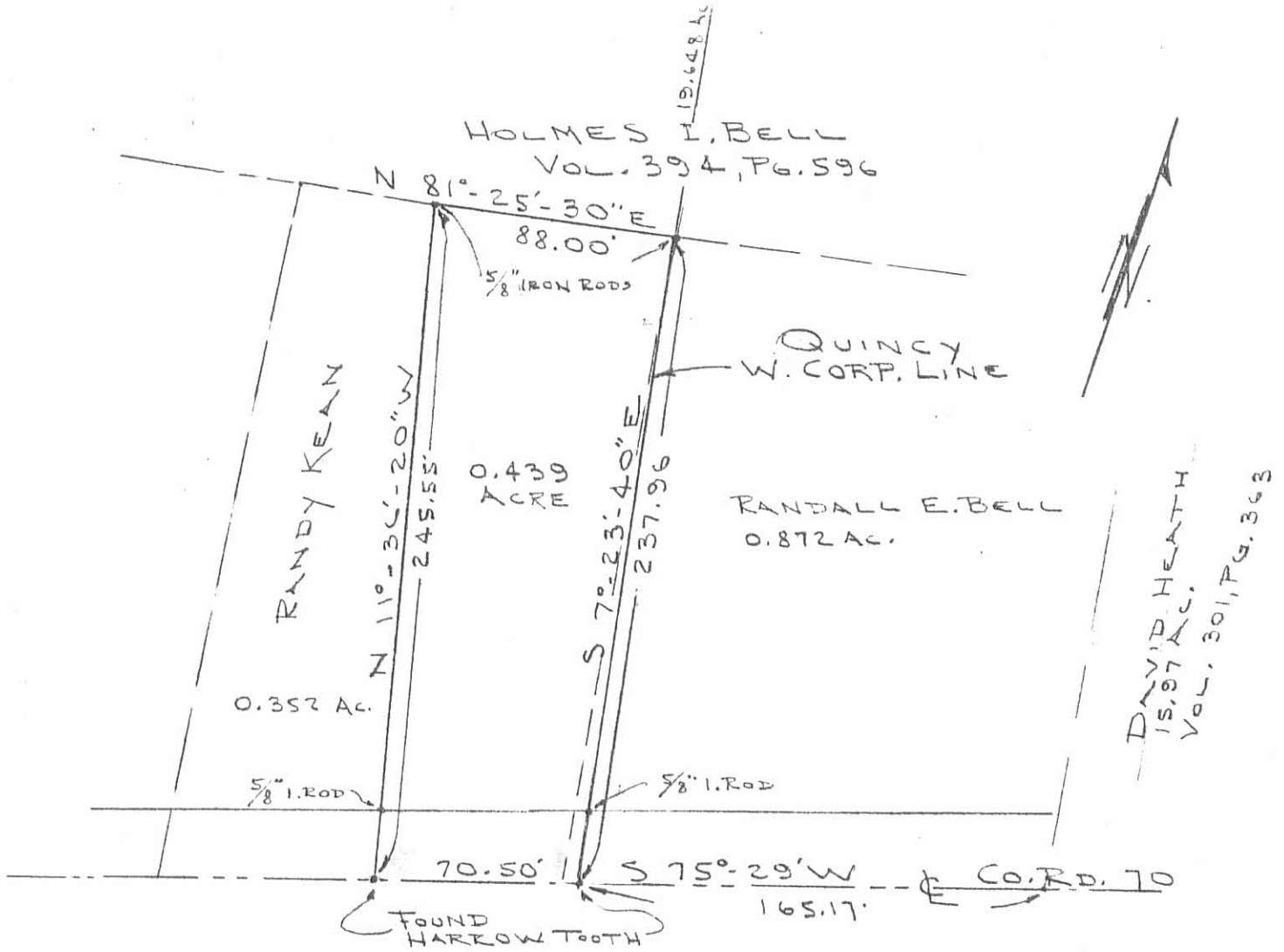
Prepared by:


Clayton M. Lee
Registered Surveyor No. 6181
May 31, 1985

This description prepared from an actual field survey.



L-931
ORIGINAL STAMP IN GREEN

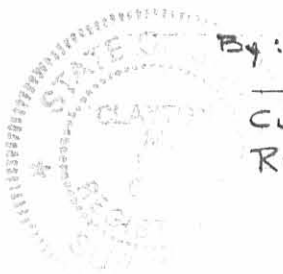


SCALE ~ 1" = 60'

NOTE:
LOT NOW SERVED
By QUINCY SAN. SEWER SYSTEM

SURVEY OF 0.439 ACRE OUT OF THE
HOLMES BELL LAND (VOL. 394, PG. 596)
SEC. 29, T-3, R-13
MIAMI TOWNSHIP
LOGAN CO., OHIO

INDEXED ON MAP
67563P



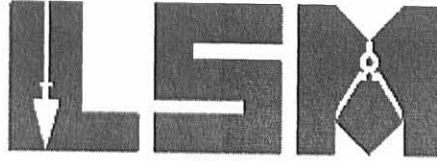
By:
CLAYTON M. LEE
REG. SURVEYOR 6181
MAY 31, 1985

RECID 11-14-09 SUM OK

Lee Surveying and Mapping Co., Inc.

Land Surveys • Topography • Subdivisions • Construction Layout

117 N. Madriver St.
Bellefontaine OH 43311



Phone: (937) 593-7335
Fax: (937) 593-7444
surveys@lsminc.us

BELL 28.888 ACRES

Lying in Section 29, Town 3, Range 13, Village of Quincy, Miami Township, Logan County, Ohio.

Being all of the Holmes I. Bell and Evelyn L. Bell, Trustees of the Holmes I. Bell and Evelyn L. Bell Trust Dated September, 2001, 4.068 acre tract, 19.201 acre tract and 5.46 acre tract as deeded and described in Official Record 530, Page 127, Tracts I, II and III of the Logan County Records of Deeds and being more particularly described as follows:

Beginning on a MAG nail found on the east line of the northwest quarter of Section 29 on the center-line of County Highway 70 (60 feet wide).

THENCE, with the east line of the northwest quarter of Section 29, N 04°-25'-33"E, a distance of 30.37 feet to a 5/8 inch iron rod set on the north right-of-way of County Highway 70.

THENCE, with the north right-of-way of County Highway 70 and the north line of a tract of unknown ownership, N 76°-36'-19"W, a distance of 213.75 feet to a 5/8 inch iron rod set.

THENCE, with an east line of the Ronald K. Bell original 42.61 acre tract (Vol. 382, Pg. 142), N 04°-58'-09"E, a distance of 1184.06 feet to a 5/8 inch iron rod found.

THENCE, with the south line of the Holmes I. Bell and Evelyn L. Bell, Trustees, 0.082 acre tract (O.R. 547, Pg. 622, Tract III), S 88°-14'-59"E, a distance of 200.10 feet to a stone found on the northwest corner of the northeast quarter of Section 29.

THENCE, with the north line of Section 29 and the south line of the David A. Heath 168.34 acre tract (Vol. 301, Pg. 362), S 89°-11'-50"E, passing into the Village of Quincy, a distance of 828.62 feet to a 5/8 inch iron rod found.

THENCE, with a west line of the said 168.34 acre tract, S 03°-57'-19"W, a distance of 1059.97 feet to a 5/8 inch iron rod found.

THENCE, with the north lines of the Roger G. Proffitt 0.88 acre tract (O.R. 227, Pg. 716), the Peggy S. Koyl 0.439 acre tract (O.R. 871, Pg. 690) and the Randy Ray Kean 0.352 acre tract (Vol. 396, Pg. 917), N 88°-53'-03"W, passing out of the Village of Quincy, a distance of 305.41 feet to a 5/8 inch iron rod found.

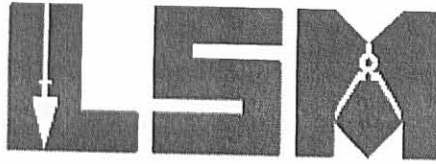
INDEXED ON MAP

6756 4D-1

Lee Surveying and Mapping Co., Inc.

Land Surveys • Topography • Subdivisions • Construction Layout

117 N. Madriver St.
Bellefontaine OH 43311



Phone: (937) 593-7335
Fax: (937) 593-7444
surveys@lsminc.us

THENCE, with the west line of the said 0.352 acre tract, S 04°-46'-15"W, a distance of 253.60 feet to a harrow tooth found on the center-line of County Highway 70, passing a 5/8 inch iron rod found at 227.28 feet.

THENCE, with the center-line of County Highway 70, the following two courses:
S 85°-11'-47"W, a distance of 195.52 feet to a 5/8 inch iron rod found.

N 76°-35'-48"W, a distance of 340.40 feet to the point of beginning.

Containing 28.888 acres, of which 0.369 acre is within the highway right-of-way. There are 4.014 acres within the Village of Quincy and 24.874 acres within Miami Township.

The basis for bearings is the north line of Section 29, being S 89°-11'-50"E, and all other bearings are from angles and distances measured in a field survey by Lee Surveying and Mapping Co., Inc. on November 6, 2009.

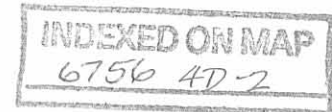


ORIGINAL STAMP IN GREEN

Description prepared by:

A handwritten signature in cursive script that reads 'William K. Bruce'.

William K. Bruce
Professional Surveyor 7437
November 10, 2009



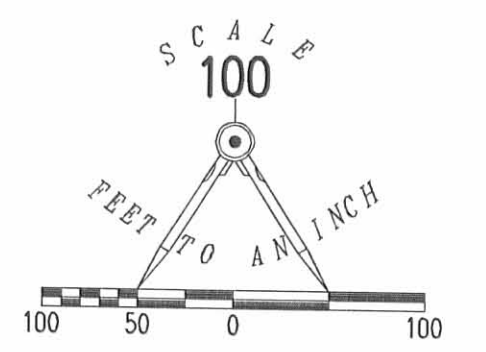
931109

RECID 11-16-09 SMY ak

HOLMES I. BELL AND
EVELYN L. BELL, TRUSTEES
0.082 ACRE
O.R. 547, PG. 622
TRACT III

DAVID A. HEATH
168.34 ACRES
VOL. 301, PG. 362

SECTION 30, TOWN 3, RANGE 13
SECTION 29, TOWN 3, RANGE 13
(BASIS FOR BEARINGS)
S 89°11'50" E
828.62'



- LEGEND:
- ⊗ RAILROAD SPIKE FOUND
 - ⊗ MAG NAIL FOUND
 - 5/8 INCH IRON ROD FOUND
 - ⊗ HARROW TOOTH FOUND
 - ⊗ STONE FOUND
 - 5/8 INCH IRON ROD SET WITH PLASTIC I.D. CAP STAMPED "LEE 7437"

HOLMES I. BELL AND
EVELYN L. BELL,
TRUSTEES OF THE
HOLMES L. BELL AND
EVELYN L. BELL TRUST
DATED SEPTEMBER, 2001
5.46 ACRES
O.R. 530, PG. 127
TRACT III
(5.689 ACRES)

RONALD K. BELL
ORIGINAL 42.61 ACRES
VOL. 382, PG. 142

28.888 ACRES

OF WHICH 0.369 ACRE IS WITHIN
THE HIGHWAY RIGHT-OF-WAY

HOLMES I. BELL AND
EVELYN L. BELL,
TRUSTEES OF THE
HOLMES L. BELL AND
EVELYN L. BELL TRUST
DATED SEPTEMBER, 2001
19.201 ACRES
O.R. 530, PG. 127
TRACT II
(19.185 ACRES)

HOLMES I. BELL AND
EVELYN L. BELL,
TRUSTEES OF THE
HOLMES L. BELL AND
EVELYN L. BELL TRUST
DATED SEPTEMBER, 2001
4.068 ACRES
O.R. 530, PG. 127
TRACT I
(4.014 ACRES)

DAVID A. HEATH
168.34 ACRES
VOL. 301, PG. 362

RETRACEMENT SURVEY OF THE
HOLMES I. BELL AND
AND EVELYN L. BELL
TRUSTEES OF THE
HOLMES I. BELL AND
AND EVELYN L. BELL TRUST
DATED SEPTEMBER, 2001
4.068 ACRE TRACT, 19.201 ACRE TRACT
AND 5.46 ACRE TRACT
OFFICIAL RECORD 530, PAGE 127
TRACTS I, II AND III
SECTION 29, TOWN 3, RANGE 13
VILLAGE OF QUINCY
MIAMI TOWNSHIP
LOGAN COUNTY, OHIO

SURVEYED BY:

William K. Bruce
WILLIAM K. BRUCE
PROFESSIONAL SURVEYOR 7437
NOVEMBER 6, 2009



COPYRIGHT 2009 BY:
LEE SURVEYING & MAPPING CO., INC.
117 North Madriver Street
BELLEFONTAINE, OHIO 43311
(937) 593-7335
surveys@lsminc.us
KSS D1109 931109 L-931-2

INDEXED ON MAP
6756 4P

2 WORKING DAYS
BEFORE YOU DIG
CALL TOLL FREE **800-362-2764**
OHIO UTILITIES PROTECTION SERVICE

