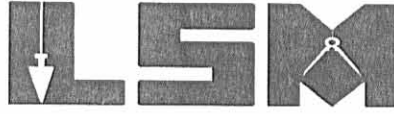


RECID 5-17-05 8MMOK

Lee Surveying and Mapping Co., Inc.

Land Surveys • Topography • Subdivisions • Construction Layout

117 N. Madriver St.
Bellefontaine OH 43311



Phone: (937) 593-7335
Fax: (937) 593-7444

PREMIUM PRESERVER ORGANIZATION 4.929 ACRES LOT A

Lying in Fractional Section 23, Town 1, Range 8, Miami Township, Logan County, Ohio.

Being out of the Premium Preserver Organization Inc., 9.656 acre tract as deeded and described in Official Record 693, Page 726 of the Logan County Records of Deeds and being more particularly described as follows:

Beginning at a MAG nail found on the east line of Section 23 at the intersection with the center-lines of Township Road 75 and the center-line extended of Ohio Route 235.

THENCE, with the center-line extended and the center-line of Ohio Route 235 (60 feet wide), S 70°-33'-40" W, a distance of 643.47 feet to a MAG nail set at the TRUE POINT OF BEGINNING.

THENCE, S 19°-26'-20"E, a distance of 380.00 feet to a 5/8 inch iron rod set, passing a 5/8 inch iron rod set at 30.07 feet.

THENCE, S 85°-38'-59"E, a distance of 441.29 feet to a point in a pond, passing a 5/8 inch iron rod set at 80.00 feet.

THENCE, S 17°-03'-47"E, a distance of 130.00 feet to a 5/8 inch iron rod set, passing a 5/8 inch iron rod set at 60.00 feet.

THENCE, with the north line of the Elisabeth Ann Cook, Trustee original 120.75 acre tract (O.R. 370, Pg. 215, Tract II), S 72°-56'-13"W, a distance of 598.44 feet to a 12 inch concrete post found.

THENCE, with the east line of the Paul R. Overholser original 20.00 acre tract (O.R. 58, Pg. 521), N 18°-36'-57"W, a distance of 663.15 feet to a MAG nail set, passing a 12 inch concrete post found at 632.13 feet.

THENCE, with the center-line of Ohio Route 235, N 70°-33'-40"E, a distance of 190.00 feet to the point of beginning.

Containing 4.929 acres, of which 0.131 acre is within the highway right-of-way.

Subject to easements and restrictions of record.

The basis for bearings is the center-line of Ohio Route 235, being S 70°33'-40" W, and all other bearings are from angles and distances measured in a field survey by Lee Surveying and Mapping Co., Inc. on December 4, 2001, April 5, 2002 and May 12, 2005.



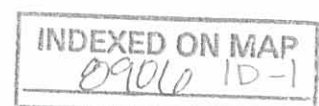
ORIGINAL STAMP IN GREEN

Description prepared by:

A handwritten signature in black ink, appearing to read 'Jeffrey I. Lee'.

Jeffrey I. Lee
Professional Surveyor 6359
December 10, 2001
April 5, 2002
Revised May 12, 2005

L-3274055

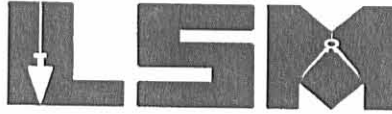


REC'D 5-17-05 8M OK

Lee Surveying and Mapping Co., Inc.

Land Surveys • Topography • Subdivisions • Construction Layout

117 N. Madriyer St.
Bellefontaine OH 43311



Phone: (937) 593-7335
Fax: (937) 593-7444

PREMIUM PRESERVER ORGANIZATION 4.727 ACRES LOT B

Lying in Fractional Section 23, Town 1, Range 8, Miami Township, Logan County, Ohio.

Being out of the Premium Preserver Organization Inc., 9.656 acre tract as deeded and described in Official Record 693, Page 726 of the Logan County Records of Deeds and being more particularly described as follows:

Beginning at a MAG nail found on the east line of Section 23 at the intersection with the center-lines of Township Road 75 and the center-line extended of Ohio Route 235.

THENCE, with the center-line extended and the center-line of Ohio Route 235 (60 feet wide), S 70°-33'-40" W, a distance of 466.00 feet to a MAG nail set at the TRUE POINT OF BEGINNING.

THENCE, with the west line of the Steven M. Legge 1.030 acre tract (O.R. 682, Pg. 118), S 15°-34'-30" E, a distance of 272.87 feet to a 5/8 inch iron rod found, passing a 5/8 inch iron rod found at 30.07 feet.

THENCE, with the south line of the said 1.030 acre tract, N 74°-25'-55" E, a distance of 160.92 feet to a 5/8 inch iron rod found.

THENCE, with the south line of the James R. Hackworth 1.029 acre tract (O.R. 297, Pg. 883), N 74°-27'-06" E, a distance of 155.06 feet to a 5/8 inch iron rod found.

THENCE, with the south line of the Nathan L. Kerns 1.022 acre tract (O.R. 359, Pg. 514), N 73°-59'-54" E, a distance of 150.15 feet to a 5/8 inch iron rod found.

THENCE, with the west line of the Eric Swigart 68.387 acre tract (O.R. 465, Pg. 122), S 15°-39'-42" E, a distance of 394.41 feet to a 12 inch by 12 inch square concrete post found.

THENCE, with a north line of the Elizabeth Ann Cook, Trustee, original 120.75 acre tract (O.R. 370, Pg. 215, Tract II), S 72°-56'-13" W, a distance of 200.00 feet to a 5/8 inch iron rod set.

THENCE, N 17°-03'-47"W, a distance of 130.00 feet to a point in a pond, passing a 5/8 inch iron rod set at 70.00 feet.

THENCE, N 85°-38'-59"W, a distance of 441.29 feet to a 5/8 inch iron rod set, passing a 5/8 inch iron rod set at 361.29 feet.

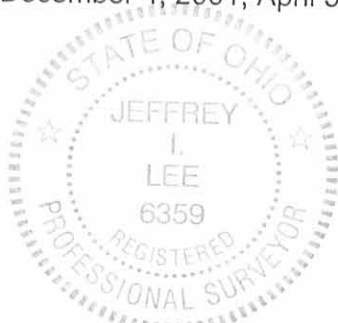
THENCE, N 19°-26'-20"W, a distance of 380.00 feet to a MAG nail set, passing a 5/8 inch iron rod set at 349.93 feet.

THENCE, with the center-line of Ohio Route 235, N 70°-33'-40"E, a distance of 177.47 feet to the point of beginning.

Containing 4.727 acres, of which 0.122 acre is within the highway right-of-way.

Subject to easements and restrictions of record.

The basis for bearings is the center-line of Ohio Route 235, being S 70°33'-40" W, and all other bearings are from angles and distances measured in a field survey by Lee Surveying and Mapping Co., Inc. on December 4, 2001, April 5, 2002 and May 12, 2005.



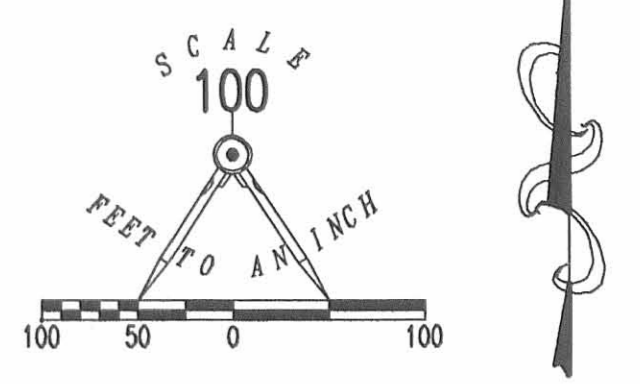
ORIGINAL STAMP IN GREEN

Description prepared by:

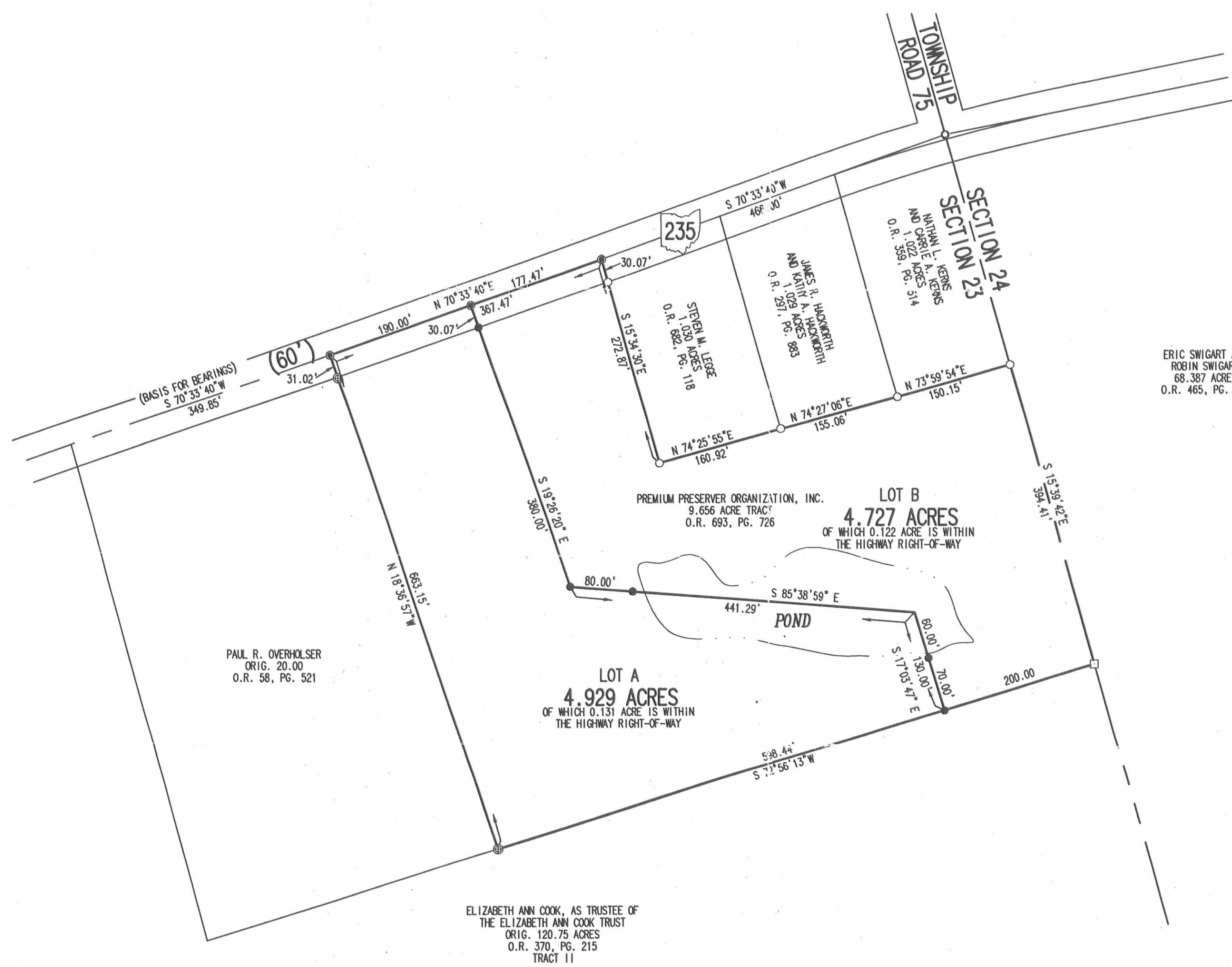
Jeffrey I. Lee
Professional Surveyor 6359
December 10, 2001
April 5, 2002
Revised May 12, 2005



L-3274055



- LEGEND
- 5/8 INCH IRON ROD SET
 - 5/8 INCH IRON ROD FOUND
 - MAG NAIL SET
 - MAG NAIL FOUND
 - ⊗ P.K. NAIL FOUND
 - ⊕ 12 INCH CONCRETE POST FOUND
 - ⊞ 12 INCH BY 12 INCH SQUARE CONCRETE POST FOUND



SURVEY OF TWO TRACTS OUT OF
PREMIUM PRESERVER ORGANIZATION, INC.
9.656 ACRE TRACT
OFFICIAL RECORD 693, PAGE 726
FRACTIONAL SECTION 23, TOWN 1, RANGE 8
MIAMI TOWNSHIP
LOGAN COUNTY, OHIO



SURVEYED BY:
Jeffrey I. Lee
JEFFREY I. LEE
PROFESSIONAL SURVEYOR 6359
DECEMBER 4, 2001
REVISED APRIL 5, 2002
REVISED MAY 12, 2005

COPYRIGHT 2005 BY:
LEE SURVEYING & MAPPING CO., INC.
117 North Madriver Street
BELLEFONTAINE, OHIO 43311
(937) 593-7335

INDEXED ON MAP
8900 1P

REC'D 4-11-02 8M OK

Lee Surveying and Mapping Co., Inc.

Land Surveys • Topography • Subdivisions • Construction Layout

117 N. Madriver St.
Bellefontaine OH 43311



Phone: (937) 593-7335
Fax: (937) 593-7444

OVERHOLSER 9.656 ACRES

Lying in Fractional Section 23, Town 1, Range 8, Miami Township, Logan County, Ohio.

Being out of the Paul R. Overholser original 20.00 acre tract as deeded and described in Official Record 58, Page 521 of the Logan County Records of Deeds and being more particularly described as follows:

Beginning at a MAG nail found on the east line of Section 23 at the intersection with the center-lines of Township Road 75 and the center-line extended of Ohio Route 235.

THENCE, with the center-line extended and the center-line of Ohio Route 235 (60 feet wide), S 70°-33'-40" W, a distance of 466.00 feet to a MAG nail set at the TRUE POINT OF BEGINNING.

THENCE, with the west line of the Cleal J. Tyler 1.030 acre tract (O.R. 295, Pg. 445), S 15°-34'-30" E, a distance of 272.87 feet to a 5/8 inch iron rod found, passing a 5/8 inch iron rod found at 30.07 feet.

THENCE, with the south line of the said 1.030 acre tract, N 74°-25'-55" E, a distance of 160.92 feet to a 5/8 inch iron rod found.

THENCE, with the south line of the James R. Hackworth 1.029 acre tract (O.R. 297, Pg. 883), N 74°-27'-06" E, a distance of 155.06 feet to a 5/8 inch iron rod found.

THENCE, with the south line of the Nathan L. Kerns 1.022 acre tract (O.R. 359, Pg. 514), N 73°-59'-54" E, a distance of 150.15 feet to a 5/8 inch iron rod found.

THENCE, with the west line of the Eric Swigart 68.387 acre tract (O.R. 465, Pg. 122), S 15°-39'-42" E, a distance of 394.41 feet to a 12 inch by 12 inch square concrete post found.

THENCE, with a north line of the Elizabeth Ann Cook, Trustee, original 120.75 acre tract (O.R. 370, Pg. 215, Tract II), S 72°-56'-13" W, a distance of 798.44 feet to a 12 inch concrete post found.

THENCE, N 18°-36'-57" W, a distance of 663.15 feet to a MAG nail set, passing a 12 inch concrete post found at 632.13 feet.

THENCE, with the center-line of Ohio Route 235, N 70°-33'-40" E, a distance of 367.47 feet to the point of beginning.

Containing 9.656 acres, of which 0.253 acre is within the highway right-of-way.

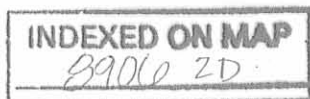
The basis for bearings is the center-line of Ohio Route 235, being S 70°33'-40" W, and all other bearings are from angles and distances measured in a field survey by Lee Surveying and Mapping Co., Inc. on December 4, 2001 and April 5, 2002.



Description prepared by:

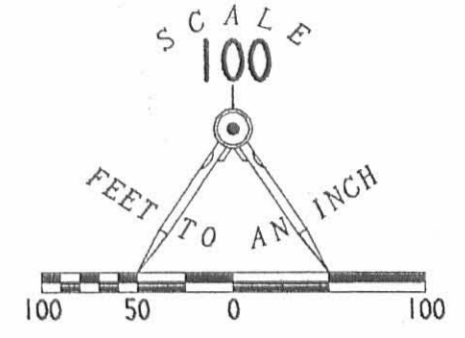
Jeffrey I. Lee
Professional Surveyor 6359
December 10, 2001
April 5, 2002

L-3274





C 1
DELTA ANGLE 7°34'34"
RADIUS 1145.90'
ARC 151.52'
TANGENT 75.87'
CHORD 151.41'
CHORD BEARING N 66°51'30"E



- LEGEND
- 5/8 INCH IRON ROD SET
 - 5/8 INCH IRON ROD FOUND
 - ⊙ MAG NAIL SET
 - MAG NAIL FOUND
 - ⊙ P.K. NAIL FOUND
 - ⊙ 12 INCH CONCRETE POST FOUND
 - 12 INCH BY 12 INCH SQUARE CONCRETE POST FOUND

ERIC SWIGART AND
ROBIN SWIGART
68.387 ACRES
G.R. 465, PG. 122

SURVEY OF THREE TRACTS OUT OF
THE PAUL R. OVERHOLSER
ORIGINAL 20.00 ACRE TRACT
OFFICIAL RECORD 58, PAGE 521
FRACTIONAL SECTION 23, TOWN 1, RANGE 8
MIAMI TOWNSHIP
LOGAN COUNTY, OHIO



SURVEYED BY:
Jeffrey I. Lee
JEFFREY I. LEE
PROFESSIONAL SURVEYOR 6359
DECEMBER 4, 2001
REVISED APRIL 5, 2002

COPYRIGHT 2001 BY:
LEE SURVEYING & MAPPING CO., INC.
117 North Madriver Street
BELLEFONTAINE, OHIO 43311
(937) 593-7335
D 406 DORTHACK L-3274-2

2 WORKING DAYS
BEFORE YOU DIG
CALL TOLL FREE **800-362-2764**
OHIO UTILITIES PROTECTION SERVICE.

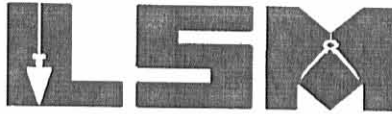
INDEXED ON MAP
8106 2P

REC'D 12-12-01 SWM OK

Lee Surveying and Mapping Co., Inc.

Land Surveys • Topography • Subdivisions • Construction Layout

117 N. Madriver St.
Bellefontaine OH 43311



Phone: (937) 593-7335
Fax: (937) 593-7444

OVERHOLSER 0.665 ACRES

Lying in Fractional Section 23, Town 1, Range 8, Miami Township, Logan County, Ohio.

Being out of the Paul R. Overholser original 20.00 acre tract as deeded and described in Official Record 58, Page 521 of the Logan County Records of Deeds and being more particularly described as follows:

Beginning at a MAG nail found on the east line of Section 23 at the intersection with the center-lines of Township Road 75 and the center-line extended of Ohio Route 235.

THENCE, with the center-line extended and the center-line of Ohio Route 235 (60 feet wide), S 70°-33'-40" W, a distance of 1183.32 feet to a MAG nail set.

THENCE, S 15°-18'-40" E, a distance of 457.83 feet to a 5/8 inch iron rod set at the TRUE POINT OF BEGINNING, passing a 5/8 inch iron rod set at 30.08 feet.

THENCE, S 15°-18'-40" E, a distance of 190.88 feet to a 5/8 inch iron rod set.

THENCE, with a north line of the Elizabeth Ann Cook, Trustee, original 120.75 acre tract (O.R. 370, Pg. 215, Tract II), S 72°-56'-13" W, a distance of 150.07 feet to a 12 inch concrete post found.

THENCE, with an east line of the said 120.75 acre tract and the east line of the Charles Matthew Giles 2.000 acre tract (O.R. 410, Pg. 584), N 15°-18'-40" W, a distance of 195.47 feet to a 5/8 inch iron rod set.

THENCE, N 74°-41'-20" E, a distance of 150.00 feet to the point of beginning.

Containing 0.665 acres.

The basis for bearings is the center-line of Ohio Route 235, being S 70°33'-40" W, and all other bearings are from angles and distances measured in a field survey by Lee Surveying and Mapping Co., Inc. on December 4, 2001.

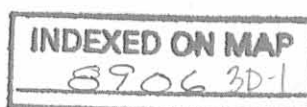
Description prepared by:

Jeffrey I. Lee
Professional Surveyor 6359
December 10, 2001



ORIGINAL STAMP IN GREEN

L-3274

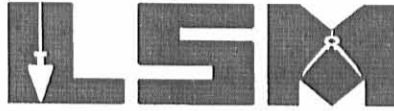


REC'D 12-12-01 *SMJ*

Lee Surveying and Mapping Co., Inc.

Land Surveys • Topography • Subdivisions • Construction Layout

117 N. Madriver St.
Bellefontaine OH 43311



Phone: (937) 593-7335
Fax: (937) 593-7444

OVERHOLSER 1.547 ACRES

Lying in Fractional Section 23, Town 1, Range 8, Miami Township, Logan County, Ohio.

Being out of the Paul R. Overholser original 20.00 acre tract as deeded and described in Official Record 58, Page 521 of the Logan County Records of Deeds and being more particularly described as follows:

Beginning at a MAG nail found on the east line of Section 23 at the intersection with the center-lines of Township Road 75 and the center-line extended of Ohio Route 235.

THENCE, with the center-line extended and the center-line of Ohio Route 235 (60 feet wide), S 70°-33'-40" W, a distance of 1183.32 feet to a MAG nail set at the TRUE POINT OF BEGINNING.

THENCE, S 15°-18'-40" E, a distance of 457.83 feet to a 5/8 inch iron rod set, passing a 5/8 inch iron rod set at 30.08 feet.

THENCE, S 74°-41'-20" W, a distance of 150.00 feet to a 5/8 inch iron rod set.

THENCE, with the east line of the Charles Matthew Giles 2.000 acre tract (O.R. 410, Pg. 584), N 15°-18'-40" W, a distance of 437.21 feet to a P.K. nail found, passing a 12 inch concrete post found at 406.57 feet.

THENCE, with the center-line of Ohio Route 235, a curve to the right having a central angle of 7°-34'-34", a radius of 1145.90 feet, an arc length of 151.52 feet and a chord bearing N 66°-51'-30" E, a distance of 151.41 feet to the point of beginning.

Containing 1.547 acres, of which 0.104 acre is within the highway right-of-way.

The basis for bearings is the center-line of Ohio Route 235, being S 70°33'-40" W, and all other bearings are from angles and distances measured in a field survey by Lee Surveying and Mapping Co., Inc. on December 4, 2001.

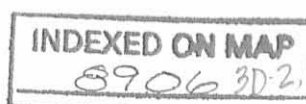
Description prepared by:



ORIGINAL STAMP IN GREEN

[Signature]
Jeffrey I. Lee
Professional Surveyor 6359
December 10, 2001

L-3274



REVID 12-12-01 SMM OK

Lee Surveying and Mapping Co., Inc.

Land Surveys • Topography • Subdivisions • Construction Layout

117 N. Madriver St.
Bellefontaine OH 43311



Phone: (937) 593-7335
Fax: (937) 593-7444

OVERHOLSER 6.591 ACRES

Lying in Fractional Section 23, Town 1, Range 8, Miami Township, Logan County, Ohio.

Being out of the Paul R. Overholser original 20.00 acre tract as deeded and described in Official Record 58, Page 521 of the Logan County Records of Deeds and being more particularly described as follows:

Beginning at a MAG nail found on the east line of Section 23 at the intersection with the center-lines of Township Road 75 and the center-line extended of Ohio Route 235.

THENCE, with the center-line extended and the center-line of Ohio Route 235 (60 feet wide), S 70°-33'-40" W, a distance of 466.00 feet to a MAG nail set at the TRUE POINT OF BEGINNING.

THENCE, with the west line of the Cleal J. Tyler 1.030 acre tract (O.R. 295, Pg. 445), S 15°-34'-30" E, a distance of 272.87 feet to a 5/8 inch iron rod found, passing a 5/8 inch iron rod found at 30.07 feet.

THENCE, with the south line of the said 1.030 acre tract, N 74°-25'-55" E, a distance of 160.92 feet to a 5/8 inch iron rod found.

THENCE, with the south line of the James R. Hackworth 1.029 acre tract (O.R. 297, Pg. 883), N 74°-27'-06" E, a distance of 155.06 feet to a 5/8 inch iron rod found.

THENCE, with the south line of the Nathan L. Kerns 1.022 acre tract (O.R. 359, Pg. 514), N 73°-59'-54" E, a distance of 150.15 feet to a 5/8 inch iron rod found.

THENCE, with the west line of the Eric Swigart 68.387 acre tract (O.R. 465, Pg. 122), S 15°-39'-42" E, a distance of 394.41 feet to a 12 inch by 12 inch square concrete post found.

THENCE, with a north line of the Elizabeth Ann Cook, Trustee, original 120.75 acre tract (O.R. 370, Pg. 215, Tract II), S 72°-56'-13" W, a distance of 615.57 feet to a 5/8 inch iron rod set.

THENCE, N 15°-39'-42" W, a distance of 672.13 feet to a MAG nail set, passing a 5/8 inch iron rod set at 642.06 feet.

THENCE, with the center-line of Ohio Route 235, N 70°-33'-40" E, a distance of 150.00 feet to the point of beginning.

Containing 6.591 acres, of which 0.103 acre is within the highway right-of-way.

The basis for bearings is the center-line of Ohio Route 235, being S 70°33'-40" W, and all other bearings are from angles and distances measured in a field survey by Lee Surveying and Mapping Co., Inc. on December 4, 2001.

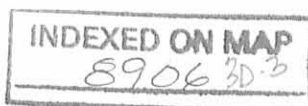
Description prepared by:



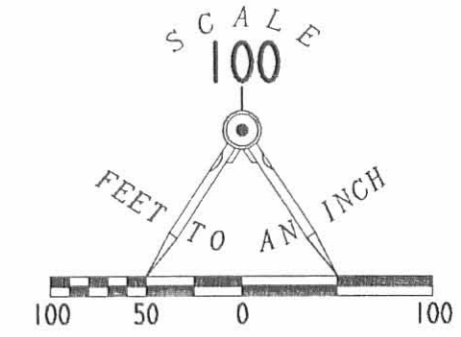
ORIGINAL STAMP IN GREEN

Jeffrey I. Lee
Jeffrey I. Lee
Professional Surveyor 6359
December 10, 2001

L-3274



C I
 DELTA ANGLE 7° 34' 34"
 RADIUS 1145.90'
 ARC 151.52'
 TANGENT 75.87'
 CHORD 151.41'
 CHORD BEARING N 66° 51' 30" E



- LEGEND
- 5/8 INCH IRON ROD SET
 - 5/8 INCH IRON ROD FOUND
 - ⊙ MAG NAIL SET
 - MAG NAIL FOUND
 - ⊗ P.K. NAIL FOUND
 - ⊕ 12 INCH CONCRETE POST FOUND
 - 12 INCH BY 12 INCH SQUARE CONCRETE POST FOUND



SURVEY OF THREE TRACTS OUT OF
 THE PAUL R. OVERHOLSER
 ORIGINAL 20.00 ACRE TRACT
 OFFICIAL RECORD 58, PAGE 521
 FRACTIONAL SECTION 23, TOWN I, RANGE 8
 MIAMI TOWNSHIP
 LOGAN COUNTY, OHIO



SURVEYED BY:

 JEFFREY I. LEE
 PROFESSIONAL SURVEYOR 6359
 DECEMBER 4, 2001

COPYRIGHT 2001 BY:
 LEE SURVEYING & MAPPING CO., INC.
 117 North Madriver Street
 BELLEFONTAINE, OHIO 43311
 (937) 593-7335
 D 406 DORTHACK L-3274-2

2 WORKING DAYS
BEFORE YOU DIG
 CALL TOLL FREE 800-362-2764
 OHIO UTILITIES PROTECTION SERVICE.

INDEXED ON MAP
 89063P

REC'D 6-20-96 SWJ ON ✓

LESLIE H. GEESLIN

REGISTERED SURVEYOR 5248

P. O. BOX 274

RUSHSVLVANIA, OHIO 43347

TELEPHONE: (513) 468-2793

OVERHOLSER SURVEY

June 21, 1996

The following described real estate situated in the State of Ohio, County of Logan, Township of Miami, being part of Section 23, Town 1, Range 8 E., and more particularly described as follows:

Commencing at a cap and nail found in the centerline of State Route 235 at the northwest corner of Nathan Kerns, etal's 1.022 acre tract as described in O. R. Vol. 261, Page 772.

Thence with the centerline of said S. R. 235 on a 2291.83 foot radius curve to the left, the chord of which measures S. 85° 14' 36" W. 20.45 feet to a cap and nail found.

Thence again with the centerline of said S. R. 235 S. 84° 59' 15" W. 135.03 feet to a cap and nail found for the true place of beginning for this description.

Thence S. 1° 11' 41" E. 283.84 feet to a 5/8 inch iron bar found, passing a 5/8 inch iron bar found at 30.05 feet.

Thence S. 88° 48' 19" W. 161.04 feet to a 5/8 inch iron bar set.

Thence N. 1° 11' 41" W. 273.09 feet to a cap and nail set in the centerline of said S. R. 235, passing a 5/8 inch iron bar set at 243.04 feet.

Thence with the centerline of said S. R. 235 N. 84° 59' 15" E. 161.38 feet to the place of beginning.

Containing 1.030 acres more or less of which 0.111 acre is in the right of way of State Route 235.

The above described 1.030 acre tract being part of Paul Overholser's 20.00 acre tract as described in O. R. Vol. 58 Page 521.

Bearings are based on an assumed bearing (N. 84° 59' 15" E.) for the centerline of S. R. 235 in this field survey by Leslie H. Geeslin, Reg. Surveyor 5248 on June 21, 1996.



Leslie H. Geeslin

MI A:\03\OVERHLSR.SAM

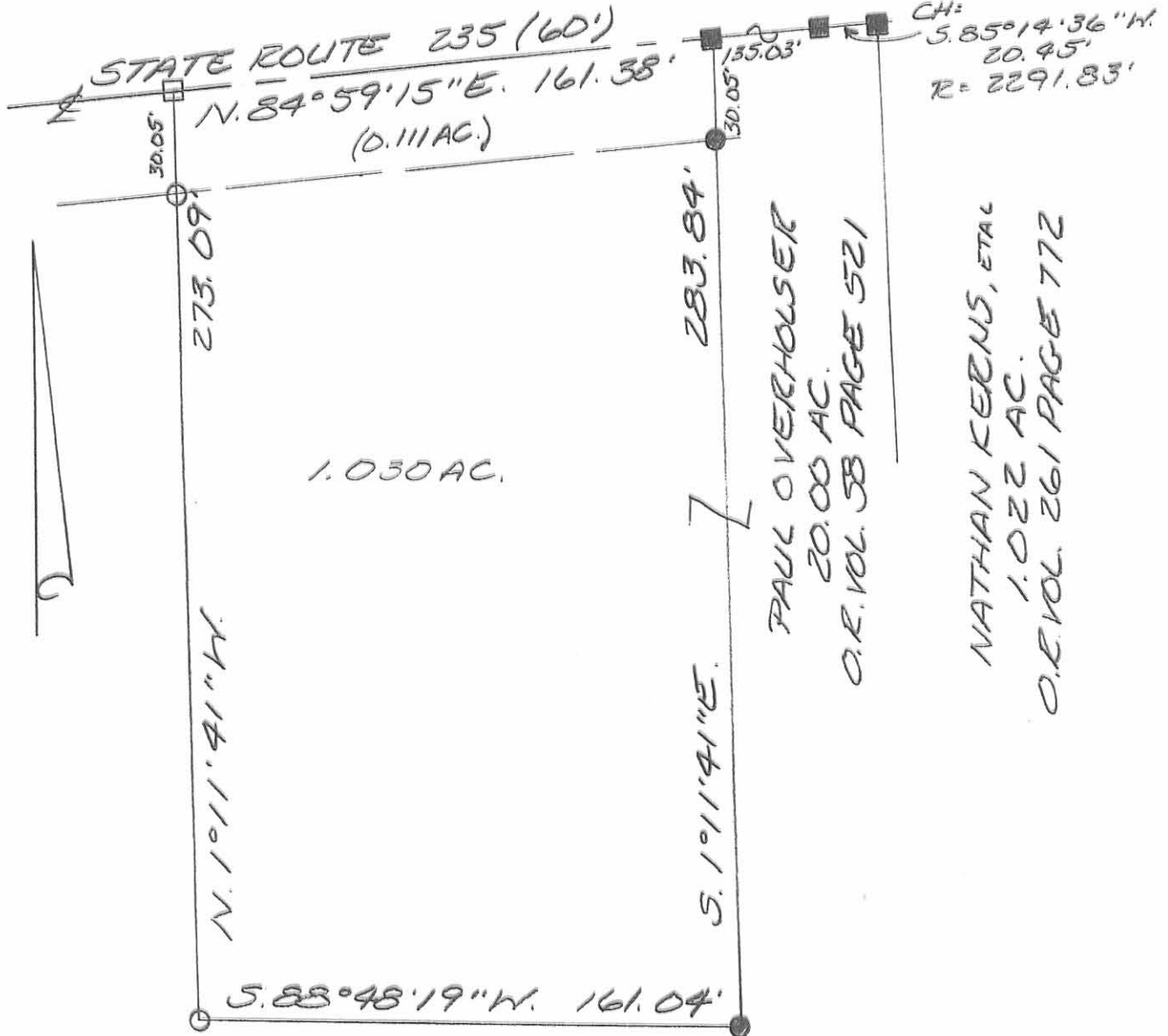
INDEXED ON MAP
8906 4D

REC'D 6-20-90 Smy on

SCALE: 1" = 50'



- LEGEND:
- = 3/8 INCH IRON BAR SET
 - = CAP AND NAIL SET
 - = 5/8 INCH IRON BAR FOUND
 - = CAP AND NAIL FOUND



SURVEY OF 1.030 ACRES IN SECTION 23, TOWN 1, RANGE 8 E., MIAMI TOWNSHIP, LOGAN COUNTY, OHIO FOR PAUL OVERHOLSER ON JUNE 21, 1996



Leslie H. Geeslin
LESLIE H. GEESLIN
RUSHSVLVANIA, O
(513) 468-2793

INDEXED ON MAP
8906 4P

Received 6-18-96

LESLIE H. GEESLIN

REGISTERED SURVEYOR 5248

P. O. BOX 274

RUSHSVLVANIA, OHIO 43347

TELEPHONE: (513) 468-2793

SPOFFORD MOBILE HOMES SURVEY

June 11, 1996

The following described real estate situated in the State of Ohio, County of Logan, Township of Miami, being part of Section 23, Town 1, Range 8 E. and more particularly described as follows:

Beginning at a Cap and nail set in the centerline of State Route 235 at the northwest corner of Nathan L. Kerns' 1.022 acre tract as described in O. R. Vol. 261 Page 772

Thence with said Kerns' west line S. 1° 11' 41" E. 294.10 feet to a 5/8 inch iron bar found at said Kerns' southwest corner, passing a 5/8 inch iron bar found at 30.05 feet.

Thence S. 88° 48' 19" W. 155.14 feet to a 5/8 inch iron bar set.

Thence N. 1° 11' 41" W. 283.84 feet to a cap and nail set in the centerline of said S. R. 235, passing a 5/8 inch iron bar set at 253.84 feet.

Thence with said centerline N. 84° 59' 15" E. 135.03 feet to cap and nail set.

Thence with said centerline on a 2291.83 foot radius curve to the right, the chord of which measures N. 85° 14' 36" E. 20.45 feet, to the place of beginning.

Containing 1.029 acres more or less, of which 0.107 acre is in the right of way of S. R. 235.

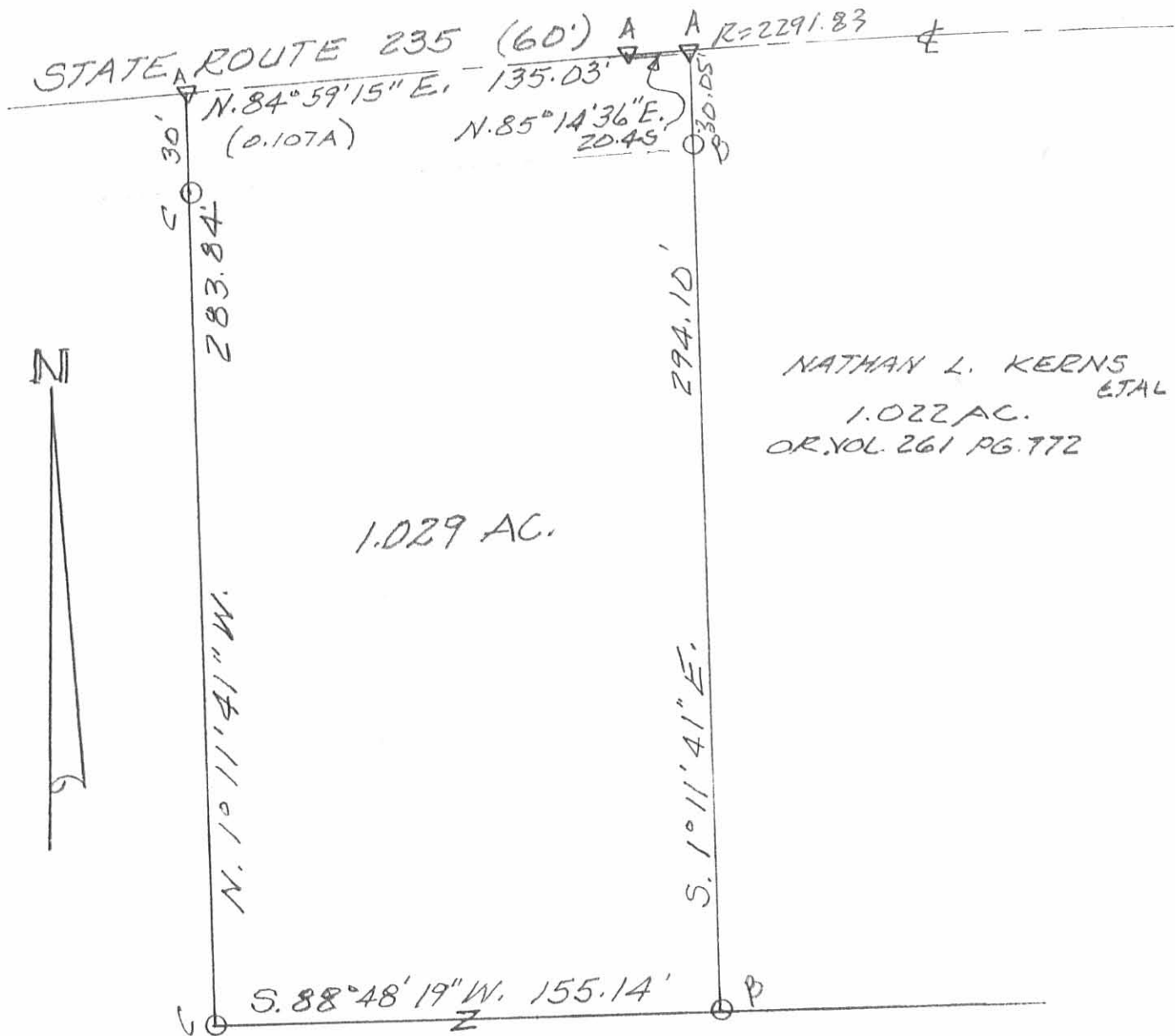
The above described 1.029 acre tract being on the north side of Paul Overholser's 20.00 acre tract as described in O. R. Vol. 58 Page 521.

Bearings are based on an assumed bearing (N. 84° 59' 15" E.) for the centerline of S. R. 235 in this field survey by Leslie H. Geeslin on May 11, 1996.



Leslie H. Geeslin

INDEXED ON MAP
8906 5D



NATHAN L. KERNS
ETAL
1.022 AC.
OR. VOL. 261 PG. 772

1.029 AC.

LEGEND:
A = CAP & NAIL SET
B = 5/8" IRON BAR FD
C = 5/8" IRON BAR SET

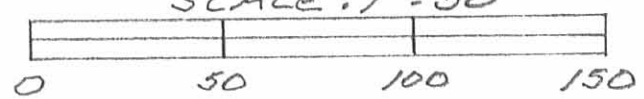


PAUL OVERHOLSER
20.00 AC.
O.R. VOL. 58 PG 521

SURVEY OF A 1.029 ACRE TRACT
IN SECTION 23, TOWN 1, RANGE 8 E.,
MIAMI TOWNSHIP, LOGAN COUNTY,
OHIO FOR SPOFFORD MOBILE HOMES.

JUNE 11, 1996

SCALE: 1" = 50'



INDEXED ON MAP
89065P

Leslie H. Geeslin
LESLIE H. GEESLIN
RUSHLYANIA, OHIO
PH 513-468-2793

✓ Received 5-25-94 SMy

LESLIE H. GEESLIN
REGISTERED SURVEYOR NO. 5248
P.O. BOX 274
RUSHSYLVANIA, OHIO 43347
TELEPHONE: (513) 468-2793

GILES SURVEY

May 25, 1994

The following described real estate situated in the State of Ohio, County of Logan, Township of Miami, being part of Section 23, Town 1, Range 8 E., and more particularly described as follows:

Beginning at a p. k. nail set at the intersection of the centerline of State Route 235 with the east line of Section 23 at the northwest corner of James Barns' 88.94 acre tract as described in O. R. Vol. 133 Page 917.

Thence with said Barns' west line and said section line S. 1° 11' 41" E. 297.81 feet to a 5/8 inch iron bar set, passing an 18 inch concrete post found at 31.78 feet.

Thence S. 88° 48' 19" W. 150.00 feet to a 5/8 inch iron bar set.

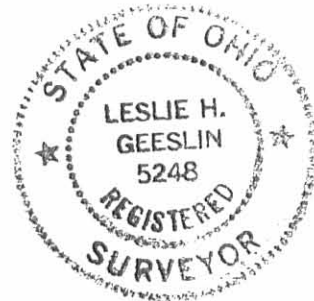
Thence N. 1° 11' 41" W. 294.10 feet to a p. k. nail set in said centerline, passing a 5/8 inch iron bar set at 264.05 feet.

Thence with said centerline on a 2291.83 foot radius curve to the right, the chord of which measures N. 87° 23' 23" E. 150.00 feet to the place of beginning.

Containing 1.022 acres more or less of which 0.103 acre is in the right of way of State Route 235.

The above described 1.022 acre tract being in the northeast corner of Paul Overholser's 20.00 acre tract as described in O. R. Vol. 58 Page 521.

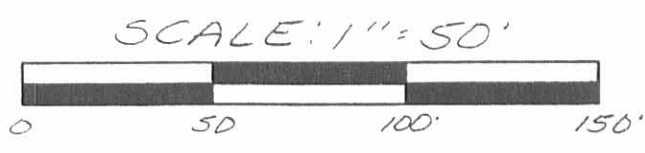
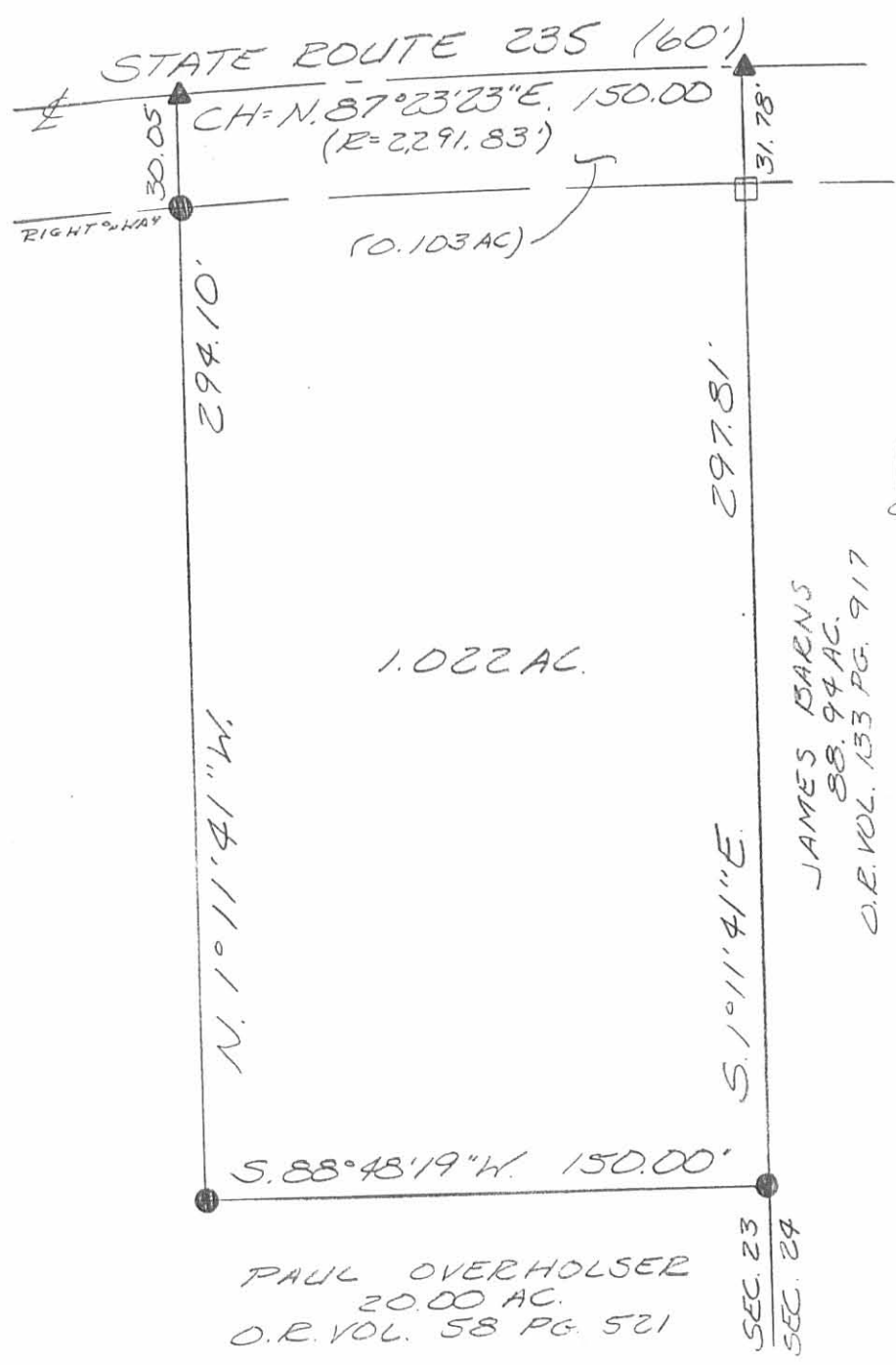
Bearings are based on an assumed bearing (S. 1° 11' 41" E.) for the west line of James Barns' 88.94 acre tract as described in O. R. Vol. 133 Page 917 in this field survey by Leslie H. Geeslin, Reg. Surveyor 5248 on May 25, 1994.



Leslie H. Geeslin

MI A:03\GILES.SAM





- LEGEND:
- = 1 1/2 INCH CONC. POST FOUND
 - = 5/8 INCH IRON BAR SET
 - ▲ = P.K. NAIL SET



SURVEY OF A 1.022 ACRE TRACT
IN SECTION 23, TOWN 1, RANGE 8 E.,
MIAMI TOWNSHIP, LOGAN COUNTY,
OHIO FOR WILLIAM GILES
ON MAY 25, 1994

INDEXED ON MAP
8906 LP



Leslie H. Geeslin
LESLIE H. GEESLIN
RUSHSVANIA, OH
(513) 468-2793

REC'D 9-21-94 SMY OK ✓

LESLIE H. GEESLIN
REGISTERED SURVEYOR 5248
P. O. BOX 274
RUSHSVLVANIA, OHIO 43347
TELEPHONE: (513) 468-2793



CAREY SURVEY

September 21, 1994

The following described real estate situated in the State of Ohio, County of Logan, Township of Miami, being part of Section 23, Town 1, Range 8 E., and more particularly described as follows:

Beginning at a cap and nail set in the centerline of State Route 235 that is S.85°00'38"W. 503.59 feet from a cap and nail found in a curve in said centerline at the northwest corner of Billy Giles etal's 1.022 acre tract as described in O. R. Vol. 229 Page 810.

Thence S. 4° 59' 57" E. 461.87 feet to a 5/8 inch iron bar set, passing a 5/8 inch iron bar set at 30.00 feet.

Thence N. 87° 16' 42" E. 25.19 feet to a 5/8 inch iron bar set.

Thence S. 3° 14' 20" E. 208.71 feet to a 5/8 inch iron bar set in the north line of Elizabeth Anne Cook, etal's 25.89 acre tract as described in O. R. Vol. 79 Page 501 and O. R. Vol. 220 Page 273.

Thence with said Cook's north line S. 87° 16' 03" W. 208.70 feet to a 5/8 inch iron bar set.

Thence N. 3° 14' 34" W. 208.73 feet to a 5/8 inch iron bar set.

Thence N. 87° 16' 15" E. 153.50 feet to a 5/8 inch iron bar set.

Thence N. 4° 59' 57" W. 460.68 feet to a cap and nail set in said centerline, passing a 5/8 inch iron bar set at 430.68 feet.

Thence with said centerline N. 85° 00' 00" E. 30.00 feet to the place of beginning.

Containing 1.318 acres more or less of which 0.021 acre is in the right of way of State Route 235.

The above described 1.318 acre tract being part of Paul Overholser's 20 acre tract as described in O. R. Vol. 58 Page 521.

Bearings are based on an assumed bearing (N. 85° 00' 00" E.) for the centerline of State Route 235 in this field survey by Leslie H. Geeslin, Reg. Surveyor 5248 on September 21, 1994.

MI A:\03\CAREY.SAM



REC'D 9-21-94 SMY OK

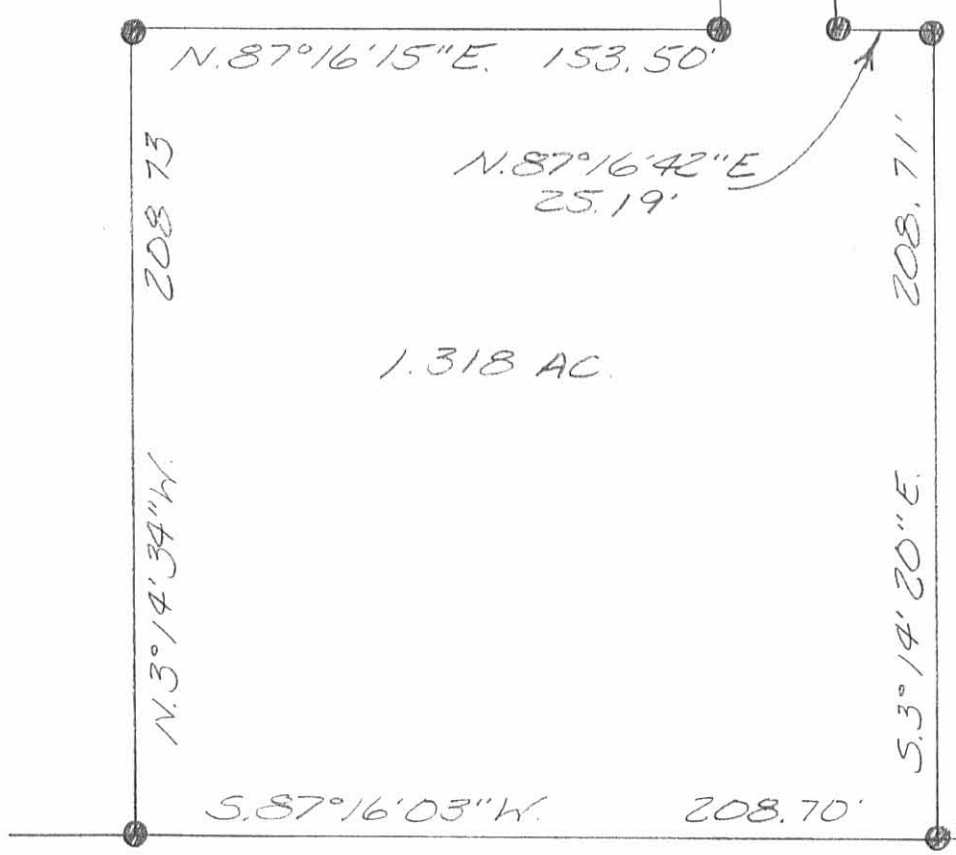
STATE ROUTE 235 (60')
N. 85°00'00"E 30.00' 30.00' 5.85°00'38"W. 503.59'

BILLY GILES, ETAL
10.22 AC.
O.R. VOL. 229 PG. 810

PAUL OVERHOLSER
20 AC.
O.R. VOL. 58 PAGE 521

LEGEND:
▲ = CAP AND NAIL SET
● = 3/8 INCH IRON BAR SET
▲ = CAP AND NAIL FOUND

SURVEY OF 1.318 ACRES IN
SECTION 23, TOWN 1, RANGE 8 E,
MIAMI TOWNSHIP, LOGAN COUNTY,
OHIO FOR JOANNE CAREY ON
SEPTEMBER 21, 1994



ELIZABETH ANN COOK, ETAL
25.89 AC
O.R. VOL. 220 PG. 273
O.R. VOL. 79 PG. 501



Leslie H. Geeslin
LESLIE H. GEESLIN
RUSHSVLVANIA, O
(513)468-2793

INDEXED ON MAP
8906 7P

3-14-2022

APPROVED



EDWARDS SURVEYING

110 South Main Street
Urbana, Ohio 43078
(937) 653-6508



LEGAL DESCRIPTION FOR OVERHOLSER'S 5.545 ACRE TRACT

Being situate in the State of Ohio, County of Logan, Township of Miami, and being a part of Fractional Section 23, Town 1, Range 8, Congress Lands West of the Miami River, and being more particularly described as follows:

Beginning for reference at a Mag Nail set within the right-of-way of State Route 235 (60' right-of-way) at centerline P.I. Station 233+24 of State Route 235 (Plan L-19) and centerline Station 0+00 of Township Road 75 (40' right-of-way);

thence with the centerline tangent of State Route 235 and the centerline thereof, S-86°33'18"-W, 833.47'(feet) to a Mag Nail set at the **PRINCIPLE PLACE OF BEGINNING** for the tract hereinafter described, also being at the Northwest corner of a 4.929 acre tract conveyed to Brandy E. Bussey by deed recorded in Official Record 1229, Page 509, passing for reference Mag Nails found at 466.00'(feet) and 643.47'(feet);

thence with the West line of the 4.929 acre tract, S-2°37'13"-E, 663.11'(feet) to a 12" concrete post found on the North line of a 62.436 acre tract conveyed to Audrey K. Giles by deed recorded in Official Record 1172, Page 705, Tract I, passing for reference the right-of-way line of State Route 235 at 30.00'(feet), a 12" concrete post found at 30.96'(feet), and an iron bar set at 653.11'(feet);

thence with the North line of the 62.436 are tact, S-88°55'27"-W, 387.33'(feet) to a 5/8" diameter iron bar found at the Southwest corner of a 0.665 acre tract conveyed to Ricky & Nichol Stapleton by deed recorded in Official Record 552, Page 907, Tract II;

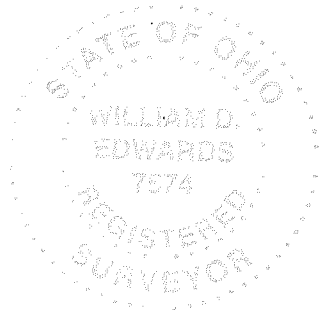
thence with the East line of the 0.665 acre tract and with the East line of a 1.547 acre tract conveyed to Ricky & Nichol Stapleton by deed recorded in Official Record 552, Page 907, Tract I, N-0°40'58"-E, 648.71'(feet) to a Mag Nail found on the centerline of aforementioned State Route 235 at P.T. Station 221+39.8, passing for reference a 5/8" diameter iron bar found on the right-of-way line of State Route 235 at 618.63'(feet);

thence with the centerline of State Route 235, N-86°33'18"-E, 349.85'(feet) to the place of beginning.

Containing 5.545 acres, 0.242 acre of which is within the Road right-of-way, but being subject to the rights of all legal highways and all easements of record.

Being a more accurate description of the remaining area of an original 20 acre tract conveyed to Paul R. Overholser by Deed recorded in Official Record 58, Page 521 of the Logan County Records.

The foregoing description prepared by and in accordance with a survey by William D. Edwards, Professional Surveyor No. 7574, March 9, 2022. All iron bars set are 5/8"x30" iron re-bar with a yellow plastic cap stamped "EDWARDS PS 7574". Bearings are based on the centerline of State Route 235 per an assumed bearing of N-86°33'18"-E.



William D. Edwards

William D. Edwards, P.S. 7574

INDEXED ON MAP
8906

3-14-2022

APPROVED

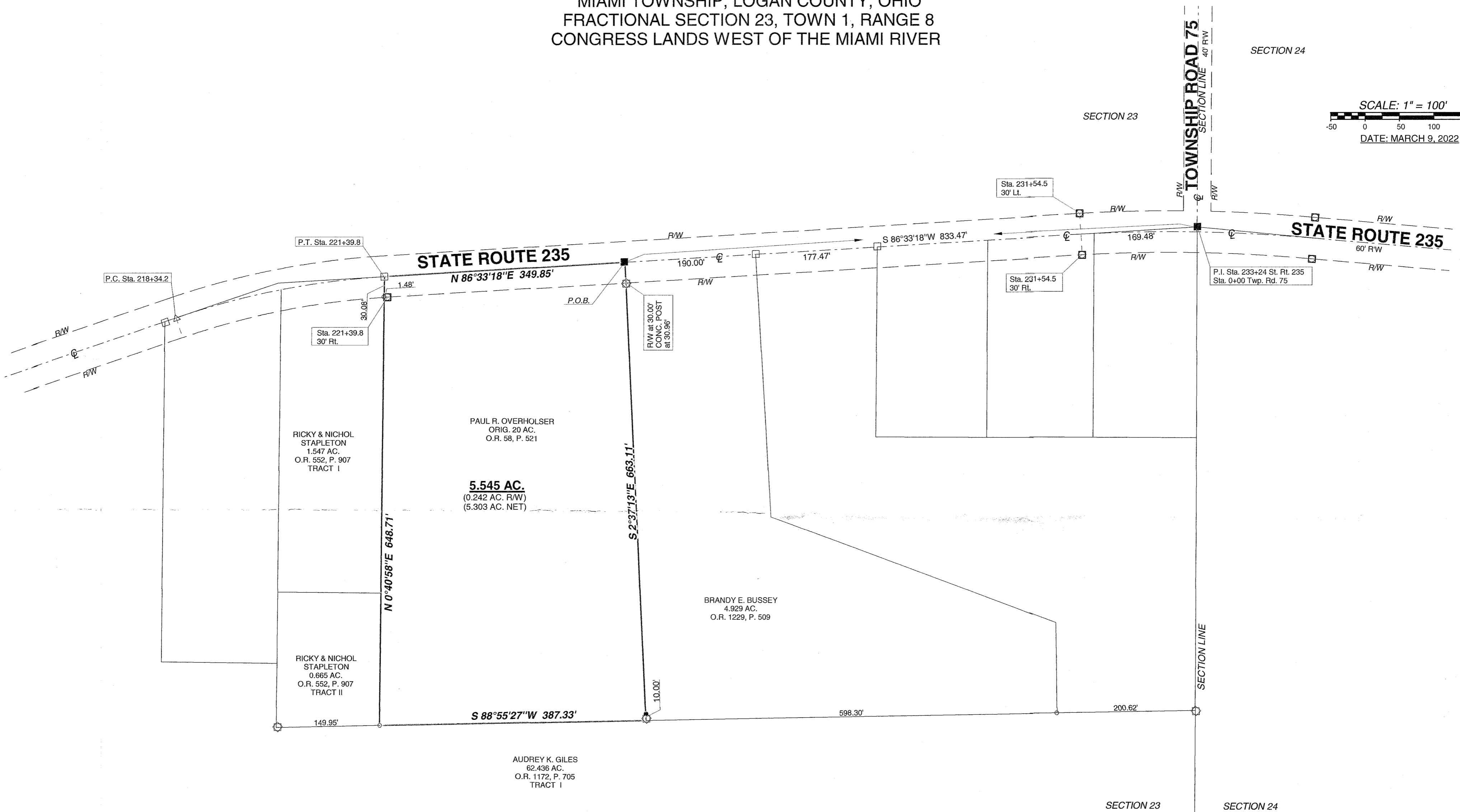
PLAT OF SURVEY

MIAMI TOWNSHIP, LOGAN COUNTY, OHIO FRACTIONAL SECTION 23, TOWN 1, RANGE 8 CONGRESS LANDS WEST OF THE MIAMI RIVER

SECTION 24

SECTION 23

SCALE: 1" = 100'
DATE: MARCH 9, 2022

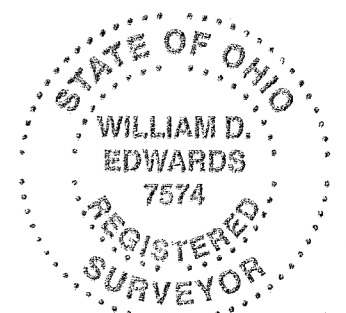


LEGEND

- = CONCRETE RIGHT-OF-WAY MONUMENT.....FOUND
- △ = RAILROAD SPIKE.....FOUND
- = 12" CONCRETE POST.....FOUND
- = 5/8" DIA. IRON BAR.....FOUND
- = MAG NAIL.....FOUND
- ⊗ = PK NAIL.....FOUND
- ∅ = 1" DIA. IRON PIPE.....FOUND
- = MAG NAIL.....SET at grade
- = 5/8"x30" IRON RE-BAR WITH YELLOW PLASTIC CAP STAMPED "EDWARDS PS 7574".....SET at grade

NOTE:

1. BEARINGS ARE BASED ON THE CENTERLINE OF STATE ROUTE 235 PER AN ASSUMED BEARING OF N-86°33'18"-E.
2. REFERENCES USED: DEED OF SUBJECT PREMISES, DEEDS OF ADJOINING PARCELS, PLATS OF SURVEYS IN THE VICINITY, COUNTY TAX AND AERIAL MAPS, HIGHWAY PLAN L-19.
3. HIGHWAY STATIONS AND OFFSETS ARE SHOWN PER HIGHWAY PLAN L-19.



SURVEYED BY: *William D. Edwards*
 WILLIAM D. EDWARDS
 PROFESSIONAL SURVEYOR No. 7574
 110 SOUTH MAIN STREET
 URBANA, OHIO 43078
 (937)653-6508

6977.ZAK

INDEXED ON MAP
8906