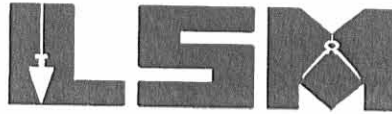


REC'D 12-8-06 smj/ak

Lee Surveying and Mapping Co., Inc.

Land Surveys • Topography • Subdivisions • Construction Layout

117 N. Madriver St.
Bellefontaine OH 43311



Phone: (937) 593-7335
Fax: (937) 593-7444

1975-2005 - 30 YEARS OF EXCELLENCE

**SUTTON
99.778 ACRES**

Lying in Section 28, Town 3, Range 13, Miami Township, Logan County, Ohio.

Being all of the remainder of the Frances L. Sutton, Trustee of the Ralph Sutton Revocable Trust dated June 21, 1999, 80 acre tract and 20 acre tract as deeded and described in Official Record 835, Page 588, Parcel III of the Logan County Records of Deeds and being more particularly described as follows:

Beginning on a stone found in a monument box found at the southwest corner of Section 28, on the south line of Logan County and north line of Champaign County and on the intersection of center-lines of Township Road 3 and County Highway 68.

THENCE, with the west line of Section 28 and the center-line of County Highway 68 (50 feet wide), N 0°-32'-04"W, a distance of 1410.76 feet to a railroad spike found.

THENCE, with the lines of the Mark Heath 3.080 acre tract (O.R. 844, Pg. 691), the following three courses:

N 89°-27'-56"E, a distance of 298.27 feet to a 5/8 inch iron rod found, passing a 5/8 inch iron rod found at 25.00 feet.

N 2°-39'-17"E, a distance of 433.00 feet to a 5/8 inch iron rod found.

S 89°-27'-56"W, a distance of 322.36 feet to a railroad spike found on the west line of Section 28 and the center-line of County Highway 68, passing a 5/8 inch iron rod found at 297.36 feet.

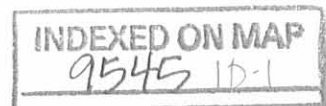
THENCE, with the west line of Section 28 and the center-line of County Highway 68, N 0°-32'-04"W, a distance of 865.95 feet to a stone found in a monument box found at the northwest corner of the southwest quarter of Section 28.

THENCE, with the north line of the southwest quarter of Section 28 and the south line of the Kenneth E. Knoop, Trustee of the Mary Grace Knoop Trust 136.26 acre tract (O.R. 829, Pg. 562), N 89°-22'-56"E, a distance of 2667.72 feet to a point under a large pile of boulders, passing 5/8 inch iron rods set at 27.00 feet and 2662.72 feet.

THENCE, with the east line of the southwest quarter of Section 28 and the west line of the Omer Evans 168.34 acre tract (O.R. 77, Pg. 896), S 0°-00'-04"E, a distance of 659.34 feet to a 5/8 inch iron rod set.

THENCE, with the lines of the Lee W. Davidson 65.45 acre tract (O.R. 680, Pg. 852), the following two courses:

S 89°-30'-43"W, a distance of 1335.84 feet to a 5/8 inch iron rod set.



Lee Surveying and Mapping Co., Inc.

Land Surveys • Topography • Subdivisions • Construction Layout

117 N. Madriver St.
Bellefontaine OH 43311



Phone: (937) 593-7335
Fax: (937) 593-7444

1975-2005 - 30 YEARS OF EXCELLENCE

S 0°-22'-19"E, a distance of 2074.38 feet to a MAG nail set on the south line of Section 28, the south line of Logan County, the north line of Champaign County and on the center-line of Township Road 3, passing a 5/8 inch iron rod set at 2044.38 feet.

THENCE, with the south line of Section 28, the south line of Logan County, the north line of Champaign County and the center-line of Township Road 3 (60 feet wide), N 89°-40'-48"W, a distance of 1320.00 feet to the point of beginning.

Containing 99.778 acres, of which 2.199 acres are within the highway rights-of-way.

The basis for bearings is the west line of Section 28, being N 0°-32'-04"W, and all other bearings are from angles and distances measured in a field survey by Lee Surveying and Mapping Co., Inc. on December 6, 2006.

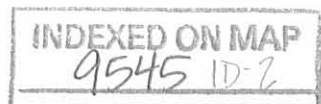


ORIGINAL STAMP IN GREEN

Description prepared by:

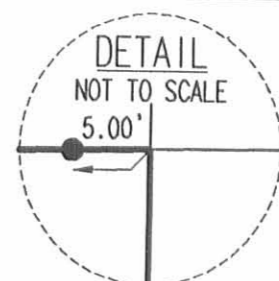
A handwritten signature in black ink, appearing to read 'Jeffrey I. Lee'.
Jeffrey I. Lee
Professional Surveyor 6359
December 7, 2006

4277116

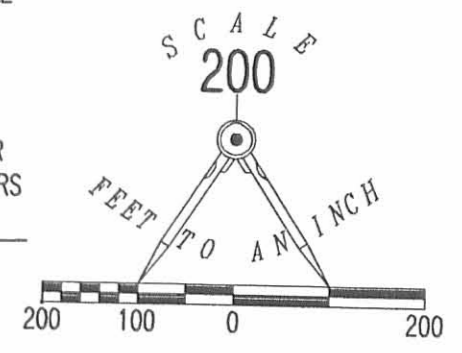


REC'D 12-8-06 SMY DL

KENNETH E. KNOOP, TRUSTEE OF THE
MARY GRACE KNOOP TRUST
136.26 ACRES
O.R. 829, PG. 562



RANDY R. BENSMAN, ETAL
75.399 ACRES
O.R. 695, PG. 690



ACTUAL CORNER UNDER
LARGE PILE OF BOULDERS

SEE
DETAIL

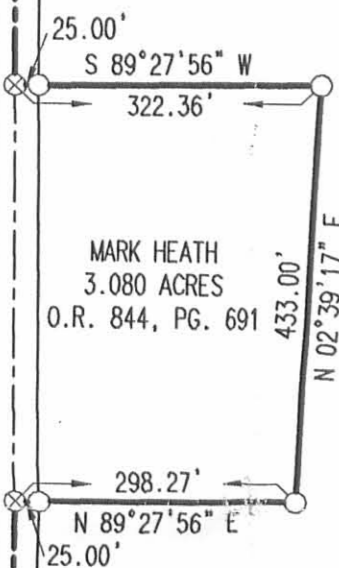
LEGEND:

- ☒ STONE FOUND IN MONUMENT BOX FOUND
- ⊗ RAILROAD SPIKE FOUND
- 5/8 INCH IRON ROD FOUND
- 5/8 INCH IRON ROD SET
- ⊙ MAG NAIL SET

FRANCES L. SUTTON,
TRUSTEE OF THE
RALPH SUTTON REVOCABLE TRUST
DATED JUNE 21, 1999
20 ACRES
O.R. 835, PG. 588
PARCEL 111

1335.84'
S 89°30'43" W

COUNTY HIGHWAY 68 (50')



MARK HEATH
3.080 ACRES
O.R. 844, PG. 691

99.778 ACRES
OF WHICH 2.199 ACRES ARE WITHIN
THE HIGHWAY RIGHTS-OF-WAY

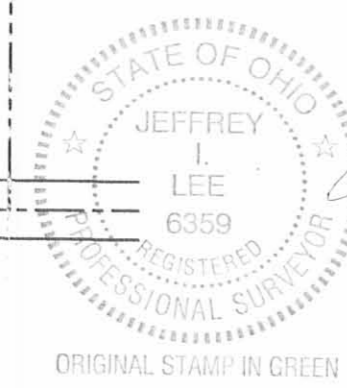
FRANCES L. SUTTON,
TRUSTEE OF THE
RALPH SUTTON REVOCABLE TRUST
DATED JUNE 21, 1999
80 ACRES
O.R. 835, PG. 588
PARCEL 111

LEE W. DAVIDSON
65.45 ACRES
O.R. 680, PG. 852

OMER EVANS
168.34 ACRES
O.R. 77, PG. 896

RETRACEMENT SURVEY OF THE
FRANCES L. SUTTON, TRUSTEE OF THE
RALPH SUTTON REVOCABLE TRUST
DATED JUNE 21, 1999
80 ACRE TRACT AND 20 ACRE TRACT
OFFICIAL RECORD 835, PAGE 588
PARCEL 111
SECTION 28, TOWN 3, RANGE 13
MIAMI TOWNSHIP
LOGAN COUNTY, OHIO

SURVEYED BY:



JEFFREY I. LEE
PROFESSIONAL SURVEYOR 6359
DECEMBER 6, 2006

COPYRIGHT 2006 BY:
LEE SURVEYING & MAPPING CO., INC.
117 North Madriver Street
BELLEFONTAINE, OHIO 43311
(937) 593-7335

ORIGINAL STAMP IN GREEN

KSR D1206 4277116 L-4277-2

(BASIS FOR BEARINGS)

N 00°32'04" W

1410.76'

N 00°32'04" W

865.95'

27.00'

27.00'

QUARTER SECTION LINE

N 89°22'56" E
2667.72'

659.34'

S 00°00'04" E

QUARTER SECTION LINE

2074.38'

S 00°22'19" E

30.00'

1320.00'

N 89°40'48" W

TOWNSHIP ROAD 3 (60')

LOGAN COUNTY

CHAMPAIGN COUNTY

MIAMI TOWNSHIP

ADAMS TOWNSHIP

2 WORKING DAYS

BEFORE YOU DIG

CALL TOLL FREE 800-362-2764

OHIO UTILITIES PROTECTION SERVICE

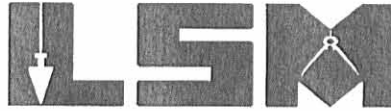
INDEXED ON MAP
9545 1P

REC'D 7-24-06 SJM

Lee Surveying and Mapping Co., Inc.

Land Surveys • Topography • Subdivisions • Construction Layout

117 N. Madriver St.
Bellefontaine OH 43311



Phone: (937) 593-7335
Fax: (937) 593-7444

1975-2005 - 30 YEARS OF EXCELLENCE

**SUTTON
3.080 ACRES**

Lying in Section 28, Town 3, Range 13, Miami Township, Logan County, Ohio.

Being out of the Ralph Sutton and Frances Sutton 80 acre tract as deeded and described in Volume 196, Page 161 of the Logan County Records of Deeds and being more particularly described as follows:

Commencing on a stone found in a monument box at the southwest corner of Section 28, on the south line of Logan County and north line of Champaign County and on the intersection of center-lines of Township Road 3 and County Highway 68.

THENCE, with the west line of Section 28 and the center-line of County Highway 68 (50 feet wide), N 0°-32'-04"W, a distance of 1410.76 feet to a railroad spike set at the TRUE POINT OF BEGINNING.

THENCE, with the west line of Section 28 and the center-line of County Highway 68, N 0°-32'-04"W, a distance of 432.33 feet to a railroad spike set.

THENCE, N 89°-27'-56"E, a distance of 322.36 feet to a 5/8 inch iron rod set, passing a 5/8 inch iron rod set at 25.00 feet.

THENCE, S 2°-39'-17"W, a distance of 433.00 feet to a 5/8 inch iron rod set.

THENCE, S 89°-27'-56"W, a distance of 298.27 feet to the point of beginning, passing a 5/8 inch iron rod set at 273.27 feet.


Containing 3.080 acres, of which 0.248 acre is within the highway right-of-way.

The basis for bearings is the west line of Section 28, being N 0°-32'-04"W, and all other bearings are from angles and distances measured in a field survey by Lee Surveying and Mapping Co., Inc. on July 18, 2006.

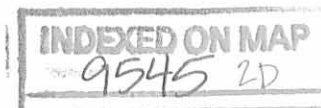


ORIGINAL STAMP IN GREEN

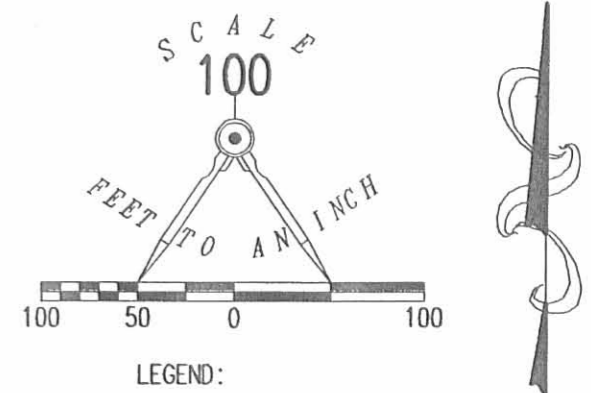
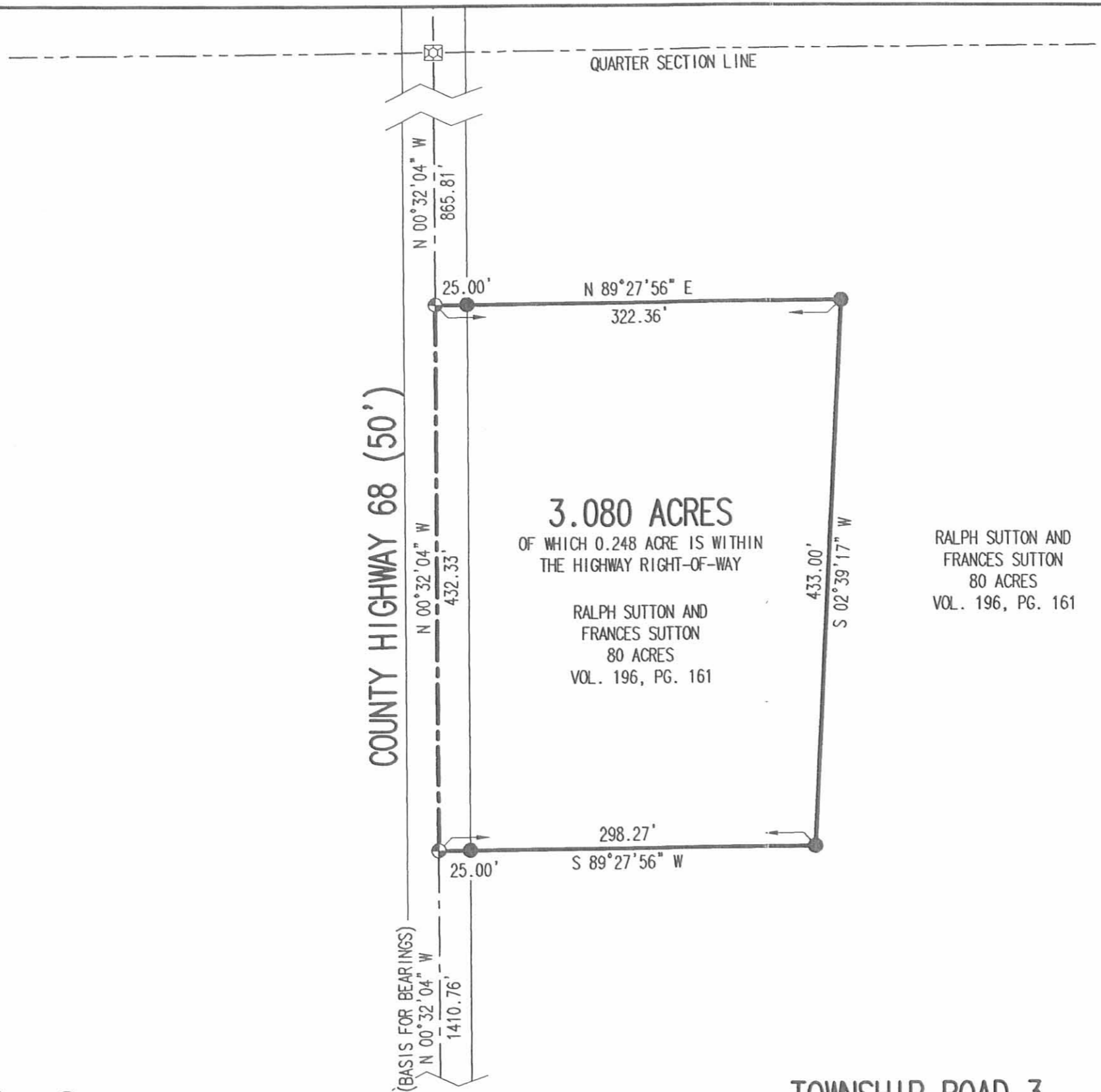
Description prepared by:


Jeffrey I. Lee
Professional Surveyor 6359
July 19, 2006

4277076



REV'D 7-24-06 S.M.J.



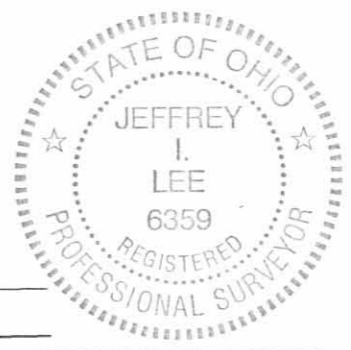
3.080 ACRES
 OF WHICH 0.248 ACRE IS WITHIN
 THE HIGHWAY RIGHT-OF-WAY

RALPH SUTTON AND
 FRANCES SUTTON
 80 ACRES
 VOL. 196, PG. 161

**SURVEY OF 3.080 ACRES OUT OF THE
 RALPH SUTTON AND
 FRANCES SUTTON
 80 ACRE TRACT
 VOLUME 196, PAGE 161
 SECTION 28, TOWN 3, RANGE 13
 MIAMI TOWNSHIP
 LOGAN COUNTY, OHIO**

SURVEYED BY:

Jeffrey I. Lee
 JEFFREY I. LEE
 PROFESSIONAL SURVEYOR 6359
 JULY 18, 2006



ORIGINAL STAMP IN GREEN

COPYRIGHT 2006 BY:
LEE SURVEYING & MAPPING CO., INC.
 117 North Madriver Street
 BELLEFONTAINE, OHIO 43311
 (937) 593-7335
 KSR D0706 4277076 L-4277-3

2 WORKING DAYS
BEFORE YOU DIG
 CALL TOLL FREE **800-362-2764**
 OHIO UTILITIES PROTECTION SERVICE.

MIAMI TOWNSHIP — LOGAN COUNTY — TOWNSHIP ROAD 3 —
 ADAMS TOWNSHIP — CHAMPAIGN COUNTY —

INDEXED ON MAP
 9545 28