

REID 9-28-07 SMJ OK

Lee Surveying and Mapping Co., Inc.

Land Surveys • Topography • Subdivisions • Construction Layout

117 N. Madriver St.
Bellefontaine OH 43311



Phone: (937) 593-7335
Fax: (937) 593-7444

SUTTON, TRUSTEE 0.584 ACRE

Lying in Section 35, Town 3, Range 13, Miami Township, Logan County, Ohio.

Being all of the Frances L. Sutton, Trustee of the Frances L. Sutton Trust Dated June 21, 1999, 20 feet wide tract and part of the original 99.72 acre tract as deeded and described in Official Record 857, Page 537, Tract IV and Tract III of the Logan County Records of Deeds and being more particularly described as follows:

Commencing on a 5/8 inch iron rod found in a monument box on the west line of Section 35, the west line of Miami Township and the west line of Logan County at the intersection of the center-lines of County Highway 4 and County Highway 70.

THENCE, with the center-line of County Highway 70 (60 feet wide), S 86°-31'-07"E, a distance of 1810.47 feet to a railroad spike set at the TRUE POINT OF BEGINNING.

THENCE, with the center-line of County Highway 70, S 86°-31'-07"E, a distance of 20.00 feet to a railroad spike set.

THENCE, with the west line of the Christopher R. Gibbs 100 acre tract (O.R. 22, Pg. 848, Tract I), S 3°-47'-56"W, a distance of 1271.35 feet to a 5/8 inch iron rod set on the north right-of-way of the C.C.C. & St. L. Railroad, passing a 5/8 inch iron rod set at 30.00 feet.

THENCE, with the north right-of-way of the C.C.C. & St. L. Railroad, S 85°-10'-34"W, a distance of 20.23 feet to a 5/8 inch iron rod set.

THENCE, with the east line extended and the east line of the David L. Stewart 17.55 acre tract (O.R. 77, Pg. 507), N 3°-47'-56"E, a distance of 1274.27 feet to the point of beginning, passing a 5/8 inch iron rod set at 1244.27 feet.

Containing 0.584 acre, of which 0.014 acre is within the highway right-of-way.

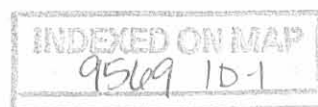
The basis for bearings is the center-line of County Highway 70 at the intersection of County Highway 4, being S 86°-31'-07"E, and all other bearings are from angles and distances measured in a field survey by Lee Surveying and Mapping Co., Inc. on September 24, 2007.



Description prepared by:

William K. Bruce
Professional Surveyor 7437
September 25, 2007

4514097



REC'D 9-28-07 SAM/AL

Lee Surveying and Mapping Co., Inc.

Land Surveys • Topography • Subdivisions • Construction Layout

117 N. Madriver St.
Bellefontaine OH 43311



Phone: (937) 593-7335
Fax: (937) 593-7444

SUTTON, TRUSTEE 9.914 ACRE

Lying in Section 35, Town 3, Range 13, Miami Township, Logan County, Ohio.

Being out of the Frances L. Sutton, Trustee of the Frances L. Sutton Trust Dated June 21, 1999, original 99.72 acre tract as deeded and described in Official Record 857, Page 537, Tract III of the Logan County Records of Deeds and being more particularly described as follows:

Commencing on a 5/8 inch iron rod found in a monument box on the west line of Section 35, the west line of Miami Township and the west line of Logan County at the intersection of the center-lines of County Highway 4 and County Highway 70.

THENCE, with the west line of Section 35, the west line of Miami Township, the west line of Logan County and the center-line of County Highway 4 (60 feet wide), S 4°-41'-21"W, a distance of 1664.27 feet to a railroad spike set on the south right-of-way of the C.C.C. & St. L. Railroad at the TRUE POINT OF BEGINNING.

THENCE, with the south right-of-way of the C.C.C. & St. L. Railroad, the following five courses:

N 85°-10'-34"E, a distance of 1083.40 feet to a 5/8 inch iron rod set, passing a 5/8 inch iron rod set at 30.42 feet.

S 7°-03'-55"W, a distance of 51.10 feet to a 5/8 inch iron rod set.

N 85°-10'-34"E, a distance of 666.60 feet to a 20 inch walnut tree, referenced by a 5/8 inch iron rod set N 85°-10'-34"E, a distance of 1.00 feet.

N 0°-34'-32"E, a distance of 50.22 feet to a 5/8 inch iron rod set.

N 85°-10'-34"E, a distance of 145.02 feet to a 5/8 inch iron rod set.

THENCE, S 1°-51'-56"E, a distance of 534.67 feet to a 5/8 inch iron rod set.

THENCE, S 72°-56'-14"W, a distance of 408.50 feet to a 5/8 inch iron rod set.

THENCE, N 7°-54'-43"W, a distance of 471.24 feet to a 5/8 inch iron rod set.

THENCE, S 85°-10'-34"W, a distance of 1462.17 feet to a railroad spike set on the west line of Section 35, the west line of Miami Township, the west line of Logan County and the center-line of County Highway 4, passing a 5/8 inch iron rod set at 1431.75 feet.



Lee Surveying and Mapping Co., Inc.

Land Surveys • Topography • Subdivisions • Construction Layout

117 N. Madriver St.
Bellefontaine OH 43311



Phone: (937) 593-7335
Fax: (937) 593-7444

THENCE, with the west line of Section 35, the west line of Miami Township, the west line of Logan County and the center-line of County Highway 4, N 4°-41'-21"E, a distance of 152.09 feet to the point of beginning.

Containing 9.914 acres, of which 0.105 acre is within the highway right-of-way.

The basis for bearings is the center-line of County Highway 70 at the intersection of County Highway 4, being S 86°-31'-07"E, and all other bearings are from angles and distances measured in a field survey by Lee Surveying and Mapping Co., Inc. on September 24, 2007.



ORIGINAL STAMP IN GREEN

Description prepared by:

William K. Bruce
Professional Surveyor 7437
September 25, 2007

4514097



REC'D 9-20-07 SWM OK
Lee Surveying and Mapping Co., Inc.

Land Surveys • Topography • Subdivisions • Construction Layout

117 N. Madriver St.
Bellefontaine OH 43311



Phone: (937) 593-7335
Fax: (937) 593-7444

**SUTTON, TRUSTEE
20.00 FEET WIDE INGRESS/EGRESS EASEMENT**

Lying in Section 35, Town 3, Range 13, Miami Township, Logan County, Ohio.

Being a 20.00 feet wide ingress/egress easement over the Frances L. Sutton, Trustee of the Frances L. Sutton Trust Dated June 21, 1999, original 99.72 acre tract as deeded and described in Official Record 857, Page 537, Tract III of the Logan County Records of Deeds and being more particularly described as follows:

Commencing on a 5/8 inch iron rod found in a monument box on the west line of Section 35, the west line of Miami Township and the west line of Logan County at the intersection of the center-lines of County Highway 4 and County Highway 70.

THENCE, with the west line of Section 35, the west line of Miami Township, the west line of Logan County and the center-line of County Highway 4 (60 feet wide), S 4°-41'-21"W, a distance of 1664.27 feet to a railroad spike set on the south right-of-way of the C.C.C. & St. L. Railroad.

THENCE, with the south right-of-way of the C.C.C. & St. L. Railroad, the following five courses:

N 85°-10'-34"E, a distance of 1083.40 feet to a 5/8 inch iron rod set, passing a 5/8 inch iron rod set at 30.42 feet.

S 7°-03'-55"W, a distance of 51.10 feet to a 5/8 inch iron rod set.

N 85°-10'-34"E, a distance of 666.60 feet to a 20 inch walnut tree.

N 0°-34'-32"E, a distance of 50.22 feet to a 5/8 inch iron rod set.

N 85°-10'-34"E, a distance of 113.09 feet to a point at the TRUE POINT OF BEGINNING.

THENCE, with the south right-of-way of the C.C.C. & St. L. Railroad, N 85°-10'-34"E, a distance of 20.23 feet to a point.

THENCE, S 3°-47'-56"W, a distance of 554.83 feet to a point.

THENCE, S 72°-56'-14"W, a distance of 21.40 feet to a point.

THENCE, N 3°-47'-56"E, a distance of 559.42 feet to the point of beginning.

The basis for bearings is the center-line of County Highway 70 at the intersection of County Highway 4, being S 86°-31'-07"E, and all other bearings are from angles and distances measured in a field survey by Lee Surveying and Mapping Co., Inc. on September 24, 2007.



ORIGINAL STAMP IN GREEN

Description prepared by:

William K. Bruce
Professional Surveyor 7437
September 25, 2007

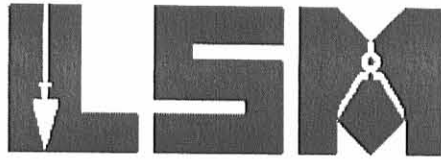
4514097



REC'D 9-28-07 SUM OK
Lee Surveying and Mapping Co., Inc.

Land Surveys • Topography • Subdivisions • Construction Layout

117 N. Madriver St.
Bellefontaine OH 43311



Phone: (937) 593-7335
Fax: (937) 593-7444

**SUTTON, TRUSTEE
20.00 FEET WIDE INGRESS/EGRESS EASEMENT**

Lying in Section 35, Town 3, Range 13, Miami Township, Logan County, Ohio.

Being a 20.00 feet wide ingress/egress easement over the Frances L. Sutton, Trustee of the Frances L. Sutton Trust Dated June 21, 1999, 20 feet wide tract and original 99.72 acre tract as deeded and described in Official Record 857, Page 537, Tract IV and Tract III of the Logan County Records of Deeds and being more particularly described as follows:

Commencing on a 5/8 inch iron rod found in a monument box on the west line of Section 35, the west line of Miami Township and the west line of Logan County at the intersection of the center-lines of County Highway 4 and County Highway 70.

THENCE, with the center-line of County Highway 70 (60 feet wide), S 86°-31'-07"E, a distance of 1810.47 feet to a railroad spike set at the TRUE POINT OF BEGINNING.

THENCE, with the center-line of County Highway 70, S 86°-31'-07"E, a distance of 20.00 feet to a railroad spike set.

THENCE, with the west line of the Christopher R. Gibbs 100 acre tract (O.R. 22, Pg. 848, Tract I), S 3°-47'-56"W, a distance of 1271.35 feet to a 5/8 inch iron rod set on the north right-of-way of the C.C.C. & St. L. Railroad, passing a 5/8 inch iron rod set at 30.00 feet.

THENCE, with the north right-of-way of the C.C.C. & St. L. Railroad, S 85°-10'-34"W, a distance of 20.23 feet to a 5/8 inch iron rod set.

THENCE, with the east line extended and the east line of the David L. Stewart 17.55 acre tract (O.R. 77, Pg. 507), N 3°-47'-56"E, a distance of 1274.27 feet to the point of beginning, passing a 5/8 inch iron rod set at 1244.27 feet.

The basis for bearings is the center-line of County Highway 70 at the intersection of County Highway 4, being S 86°-31'-07"E, and all other bearings are from angles and distances measured in a field survey by Lee Surveying and Mapping Co., Inc. on September 24, 2007.



ORIGINAL STAMP IN GREEN

Description prepared by:

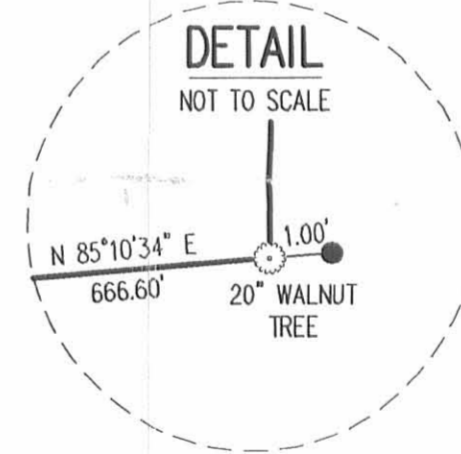
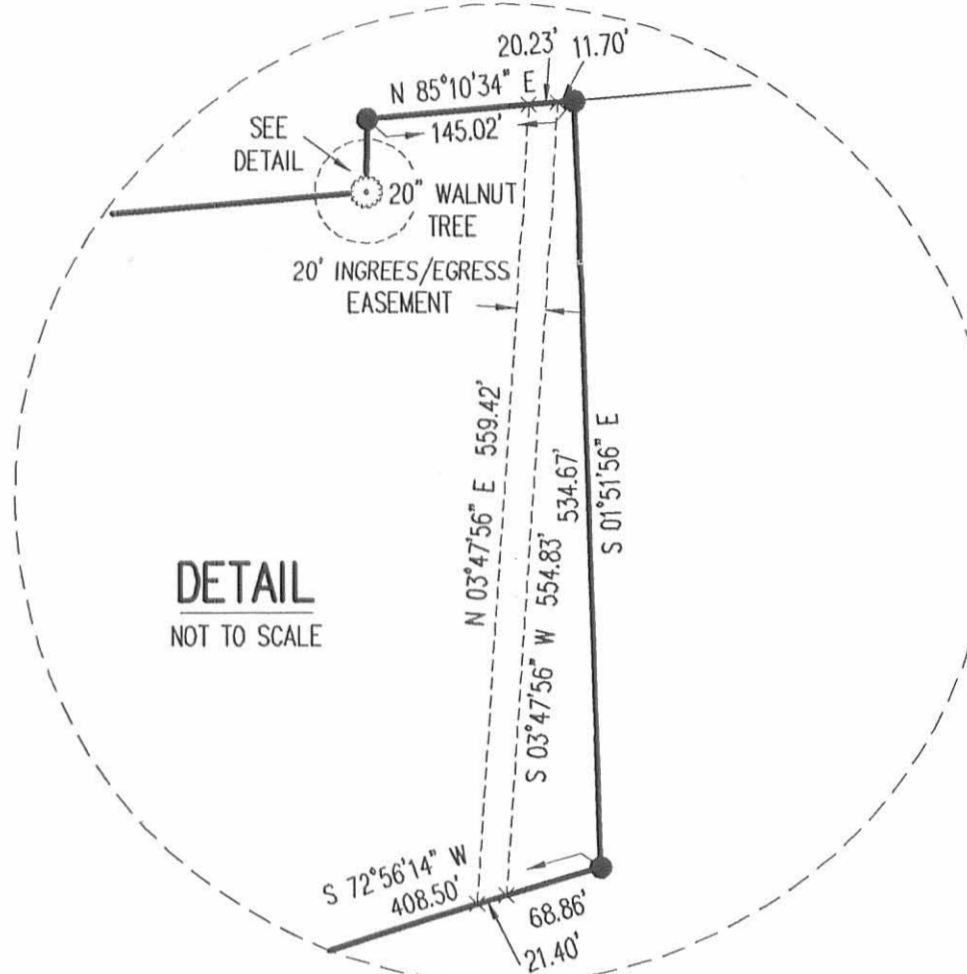
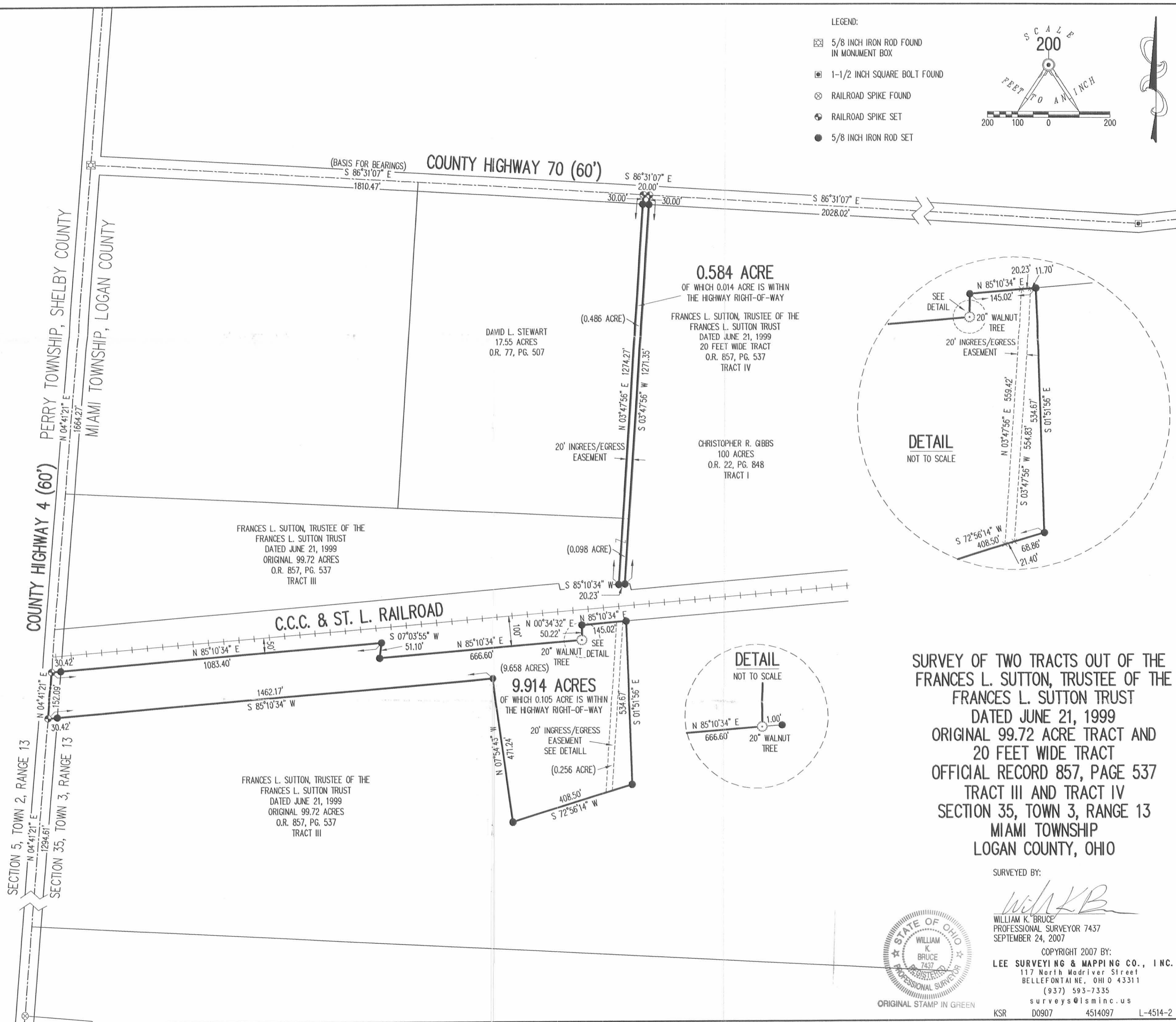
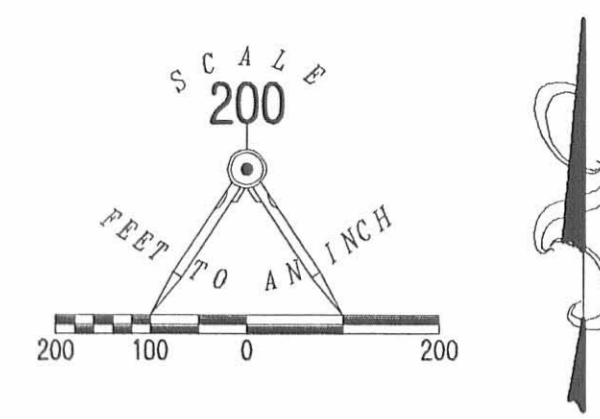
William K. Bruce
Professional Surveyor 7437
September 25, 2007

4514097



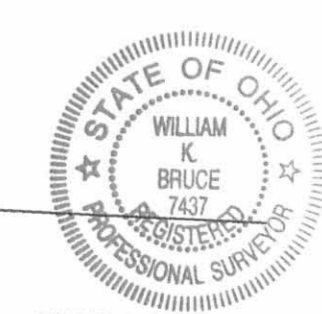
REC'D 9-28-07 EMM/OK

- LEGEND:
- ☒ 5/8 INCH IRON ROD FOUND IN MONUMENT BOX
 - ◻ 1-1/2 INCH SQUARE BOLT FOUND
 - ⊗ RAILROAD SPIKE FOUND
 - ⊕ RAILROAD SPIKE SET
 - 5/8 INCH IRON ROD SET



SURVEY OF TWO TRACTS OUT OF THE FRANCES L. SUTTON, TRUSTEE OF THE FRANCES L. SUTTON TRUST DATED JUNE 21, 1999 ORIGINAL 99.72 ACRE TRACT AND 20 FEET WIDE TRACT OFFICIAL RECORD 857, PAGE 537 TRACT III AND TRACT IV SECTION 35, TOWN 3, RANGE 13 MIAMI TOWNSHIP LOGAN COUNTY, OHIO

SURVEYED BY:
William K. Bruce



WILLIAM K. BRUCE
PROFESSIONAL SURVEYOR 7437
SEPTEMBER 24, 2007

COPYRIGHT 2007 BY:
LEE SURVEYING & MAPPING CO., INC.
117 North Madison Street
BELLEFONTAINE, OHIO 43311
(937) 593-7335
surveys@lsmc.us

INDEXED ON MAP
9569 1P

2 WORKING DAYS
BEFORE YOU DIG

CALL TOLL FREE **800-362-2764**

OHIO UTILITIES PROTECTION SERVICE

ORIGINAL STAMP IN GREEN

KSR D0907 4514097 L-4514-2