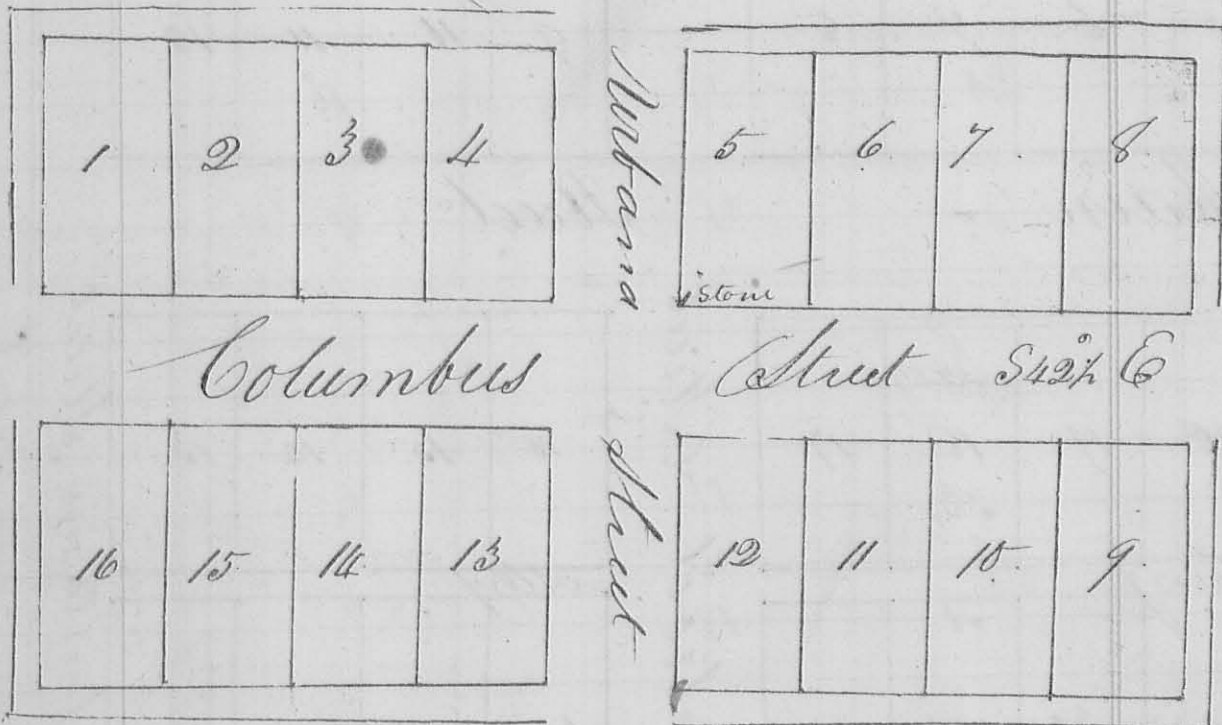


A plat of Middleburg

By a scale of 100 feet to the inch

8271



Notes.— Columbus Street runs $S42^{\circ}E$ and Arbana Street crosses it at right angles and each one is 66 feet wide — the lots are all 66 feet in front and extend back from Columbus Street 132 feet There is a stone planted at the South West corner of lot no 5 as represented on the plat — There is a 16 1/2 feet alley passing around the plat; the whole is located on Survey of 3155 in the name of George McBride, where the road from Garwood to Columbus crosses the road from Garwood's mill to Arbana

Benjamin Wetherby } 66
 Joshua McWaid }
 5th mo. May 25th 1832

J. W. Mearns
 C. L. C.

to the beginning containing 30 acres

Dan Hopkins L. C. Surveyor

N^o 273

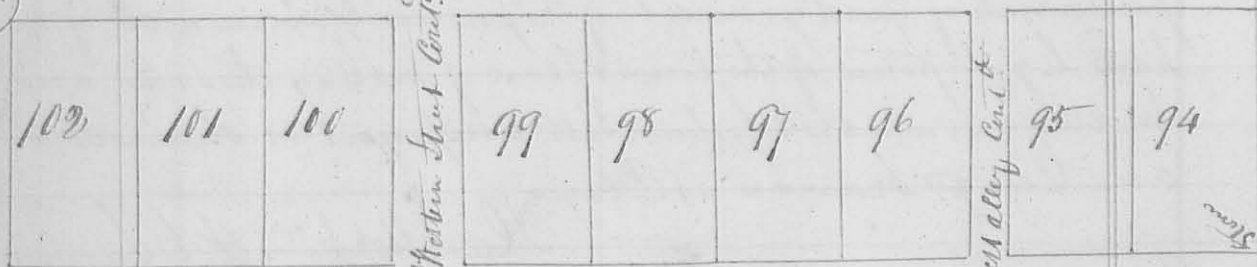
Surveyed for J. P. Miller a lot of ^{land} embracing the Carding Machine south of the town of West Liberty being a part of the N^o 9th of S 27 35 R 13 W N 1 or follow beginning at a stake in the side of the Road a cherry 12 1/2 ft. bears S 67 1/2 W 50 Links then with said Road S 15 1/2 E 4 chains to a stake then S 75 W 5 chains to a White Oak S 85 D S 45 1/2 E 37 links then N 15 W 4 ch to a Jack Oak S 8 D S 77 E 12 1/2 Links and same 10 D N 7 1/2 W 12 1/2 Links then S 75 E 5 chains to the beginning containing 30 acres

Dan Hopkins L. C. Surveyor

N^o 274

Addition to Middleburg by Levi Grubbs & William Grubbs

(8271)



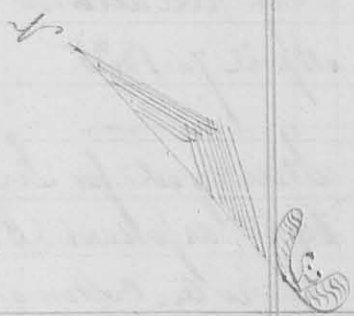
North Street of former addition 60 feet wide

Surveyed April 2nd 1835 for Levi Grubbs an Addition to the former plat of Middleburg in Logan as shown by the foregoing plat from lot N^o 94 the S.E. corner of which represents the S.W. corner of lot N^o 66 of a former addition (see page 190) at which stone is planted marked F to lot N^o 102 inclusive; which lots were surveyed beginning at a stone at the stone fronting on North Street which runs west to East S 42 1/2 E, 66 feet extending back N 47 E 133 feet. Western Alley Continued is 18 feet wide, Western Street Continued is 33 feet wide at the same time

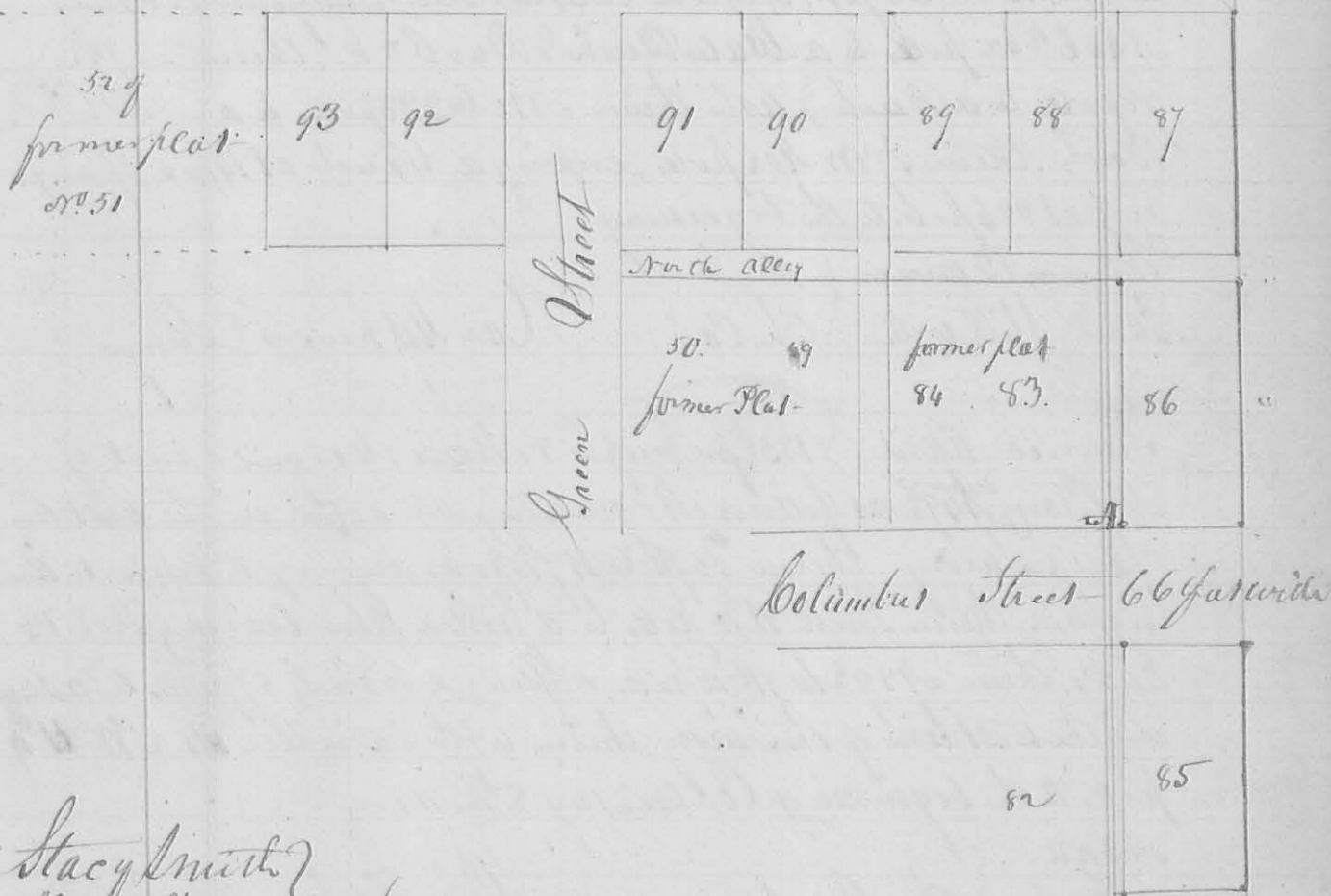
Also

Surveyed for Levi Grub, the addition to the town of Middleburg shown by the annexed plat, comes of the lots and streets the same as in William Grub's addition, the lots N^o 85, 86 front on Columbus Street 66 feet and extend back 132 feet. the others from N^o 87 to 93 inclusive front on North Street 66 feet and extend back 132 feet. N^o 91, 92 front also their lengths on Green Street, which is 66 feet wide, the alley between 87, 90 is 16 1/2 feet wide.

This Survey begins at the S.E. corner of lot N^o 83 of former addition, see page 190, also see it on the plat.



North Street Continued 66 feet wide



Stacy Smith }
Abraham Grub } Ch. Carver

Wm Hopkins, L.C. Surveyor

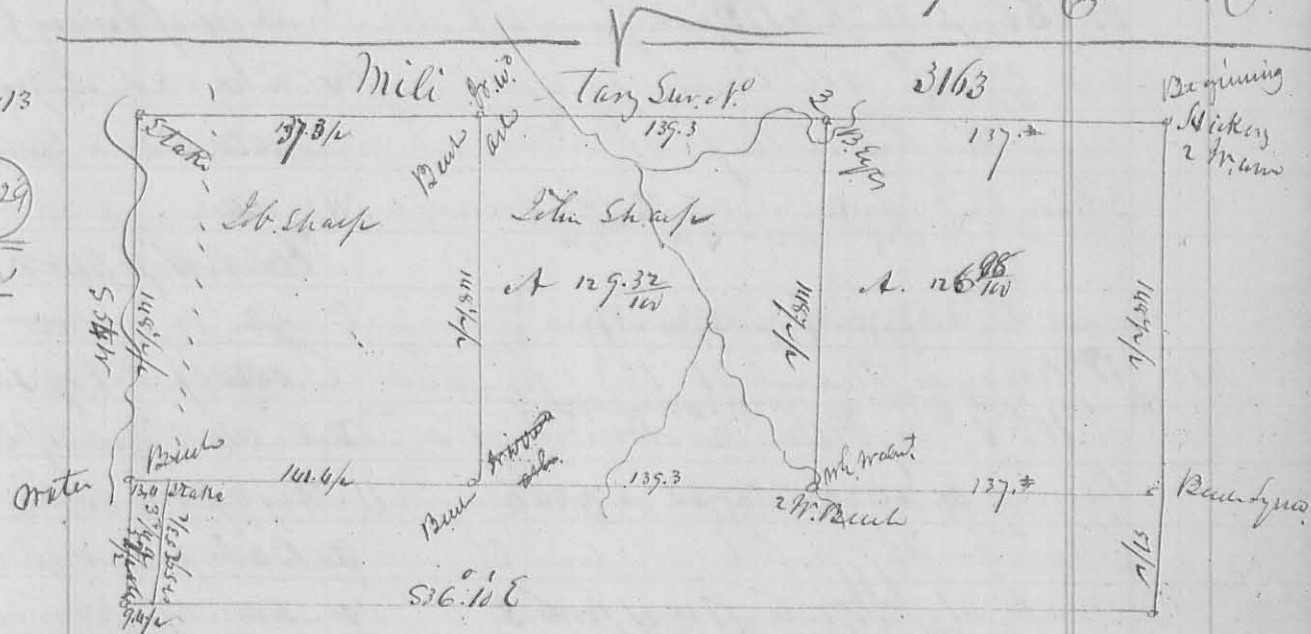
N^o 412

Surveyed April 10th 1838 an out lot adjoining 287 to Middlebury. Beginning N 22^o W 35 Links from the North westerly Corner of Lot N^o 102; thence N 47^o East 8.94 chains to a Stake; thence S 42^o E 4.47 chains to a Stake; thence S 49^o W 8.94 chains to a Stake; thence N 42^o W 4.47 chains to the beginning. Containing 4 Aers.

Dan Hopkins C. Sur. S. C.

(8271)

N^o 413



(8429)

Err

Surveyed April 11. 1838 for Heidy of Kentucky - John Surman John Sharp et al. Dan Hopkins C. Sur.

414

Surveyed April 12. 1838 for Doct. Mt. Land part of S 34. T 4. R 14 N. W. Beginning at a Stake 20 feet South of the line of Buckingham; thence S 17^o E 6 chains to a Stake. Come to John Margui. And Peter Sinter, thence with Sinter line S 78^o W 6 ch 67 Links to a Stake; thence N 1^o E 6 chains to a Stake 20 feet from said Buckingham; thence S 89^o E 6 chains 67 Links to the beginning. Containing 4 Aers.

D Hopkins Sur S. C.

N^o 415

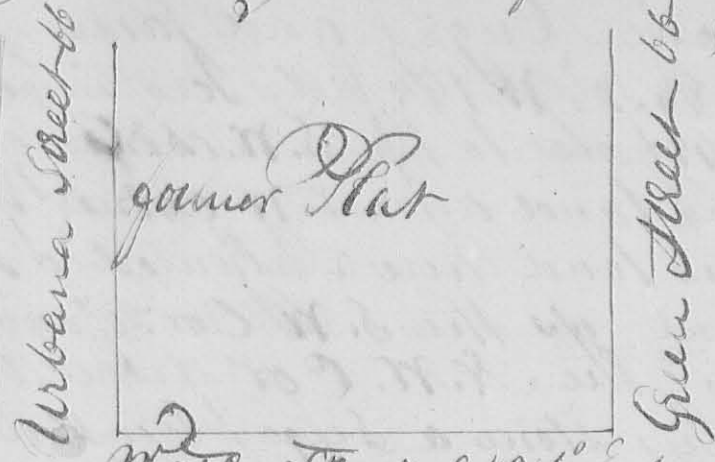
Surveyed April 26th 1838 for Georg. Sulzemburg & others. Sects 7, 8, 17. 18 & N 2^o & S 2^o of part of 9. of S. 1. of T 7 S of R 7 & 8 E. the part of S. 1. Begin at the S. E. Corn. origin at bearing true an Elm 10 Links N 57^o W 27 Links a Buck 6 Links S 38^o E 30 Links thence N 3^o 51^o W 39.86 chain to a Sycamore 48 h. d. S 75^o W 11 Links a Gray ash 24 Links S 85^o E 31 Links - thence S 86^o 10' W 35 ch 8 Links to a Gramp ash 15 Links Corn true - this Corn stems in the

(8436)

8271

Survey N^o 527

A



Surveyed June 5th 1844 for W^m Grubb, an location to the town of Middleburgh as represented by the common plot Lot N^o 103

Water Street S 42^o E 66 feet fronts on Water Street 132 feet

165 feet	132 feet
104	103

extending back to Grubb's line Lot N^o 104

fronts on water Street 165 feet extending back to Grubb's line planted a stone as represented on the plat by Christopher J. Chainmen
Benj. Grubb

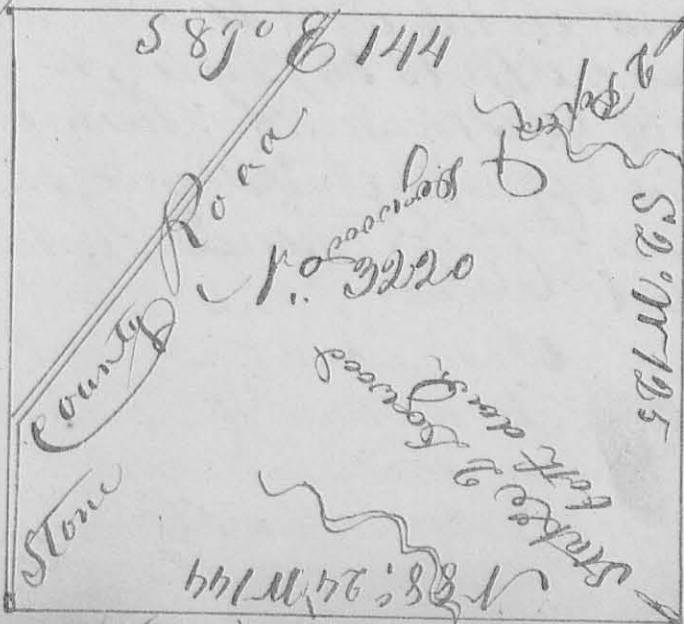
Survey N^o 528

Surveyed June 24th 1844 for Vincent

By

Hughes as follows: Beginning at Hughes North West Corner

8499



Run S 89^o E 144 poles to 2 Poplar and Dogwood the Dogwood is gone; thence S 2^o W 125 poles crossing a branch at 28 poles to 2 Dogwood, (down N. W. corner Joseph Hillen thence run the line between