

C.W. Cochran and City Bldg Loan Co
Survey 3221 Monroe Twp.

A = found stone with ^(NW Cor. Short House) 79 lbs
(SW Cor. - 58 lbs)

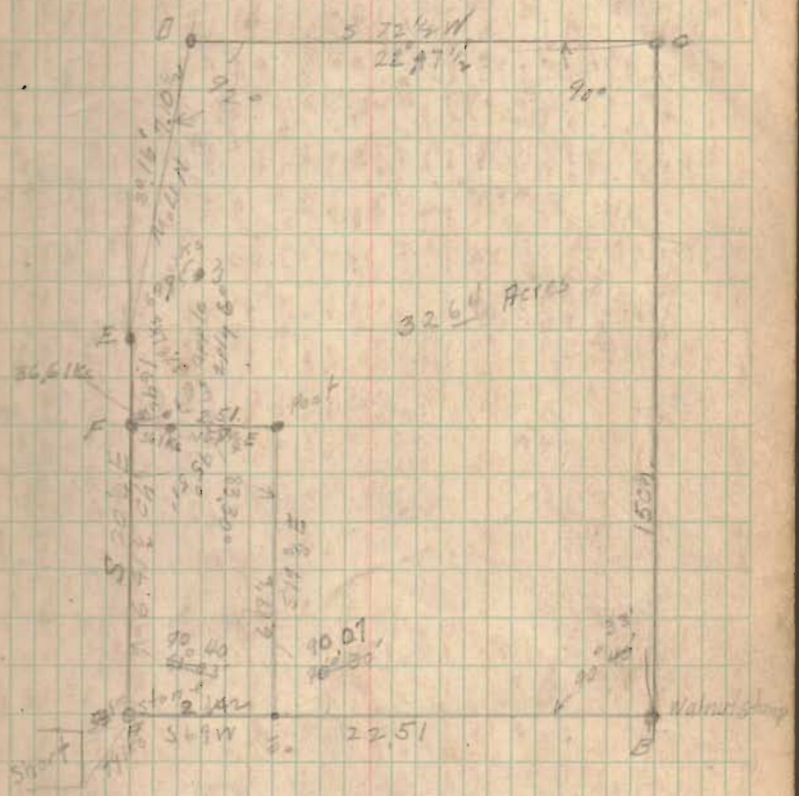
- B = found walnut stump direct iron pin
- C = drove iron pin in hedge root
- D = iron pipe driven in center of road
- E = iron pipe " " " " "
- F = iron pipe " " " " "

127

INDEXED ON MAP

50/0
4
40/50

April 14 2
W.A. Montgomery
Wm. S. ...



W.A. Montgomery