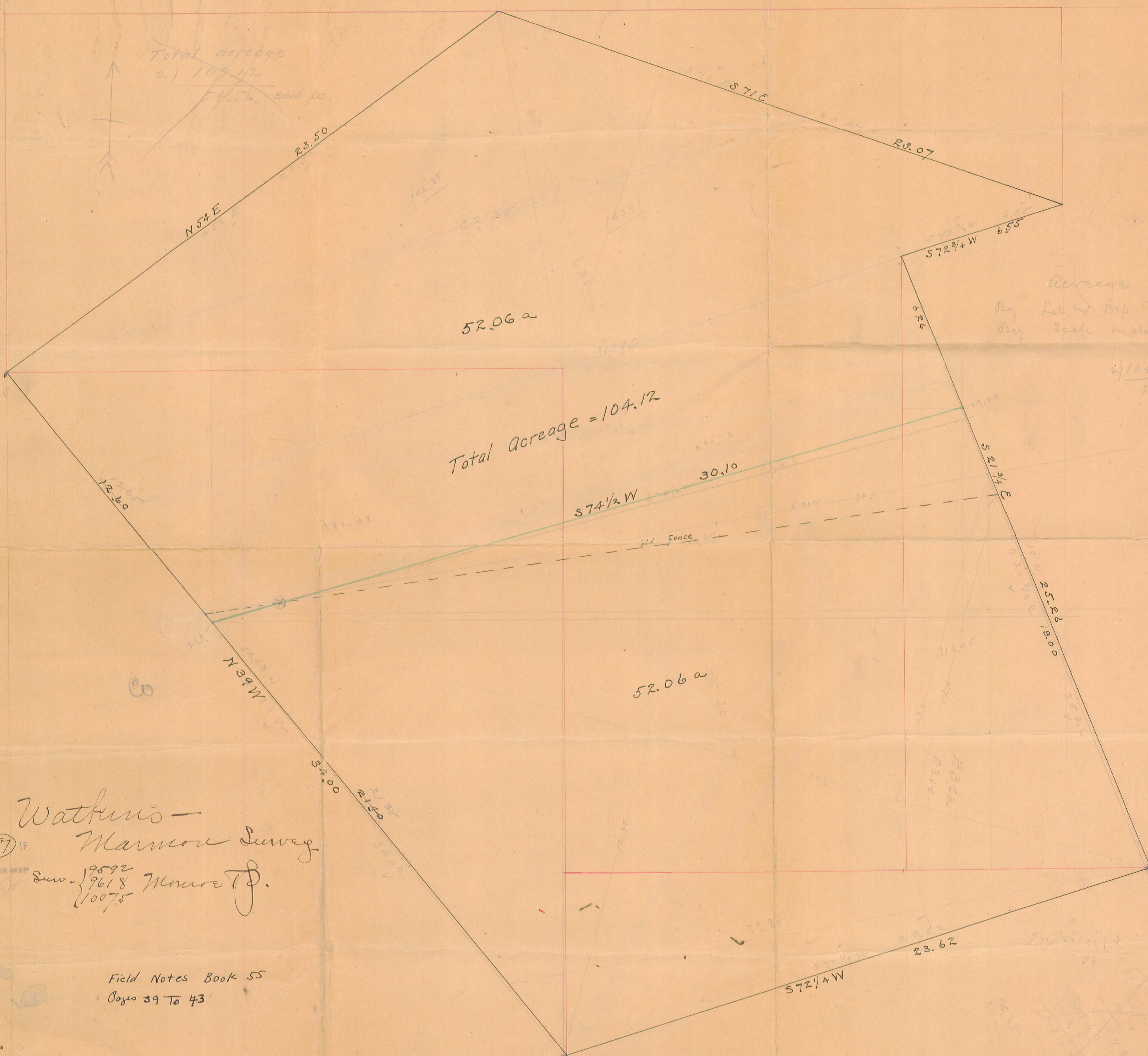


Total acreage
 2) 104.12
 52.06 each pc.



Acreage
 By Lat. and Dep. Calculations
 By Scale on plan

2) 104.12
 52.06

Total Acreage = 104.12

52.06 a

52.06 a

Watkins -
 Marmor Survey

(957) IP

Sew. { 9592
 9618 Marmor P.
 10075

Field Notes Book 55
 Pages 39 To 43

Watters - Mannon

Found stone at NE \angle of
Surv. 2242 and at SE \angle of
Walkins - Mannon tract.

Set new stone - pointed
boulder - with pos sandstone
4" blk. high N $10^{\circ} 4E$, 8 lbs
10" Wild cherry - N $65E$. 24 lbs

Line N21 = E. line of tract
Random N $21^{\circ} 4W$, offset 10' E
at 10.59, 24" W. Oak supported to
be line trace
at 15.49 fence to W.
at 25.45 set stake in line (random)
at 25.10 2 big W.O. Stumps
at 15.49 set 2 big stakes in line.

Survey - Aug 7 - 1908

F. E. Scott } ch. cr.
A. J. Walkins }
E. H. Watters jr. - ax
Omer Beams - boy.

N $78^{\circ} 14W$

Compute dividing line, and
when ready telephone to
F. E. Scott
A 14 Jamesfield.
P.O. R.F.D. #1 Jamesfield

957

INDEXED ON MAP

Line #6.

(1.)

Commence stone as set at
NE \angle of Surv. 3242.

Random, with Surv. line

S 72 $\frac{3}{4}$ W Set 5.10' offset

at 17.09 fence to S. - several
boulders near, but \angle stone
not identified

at 17.05 deflect to left \angle at
7 $^{\circ}$ 20' (S 65 $\frac{1}{4}$ W)

at 19.88 D.R. 10 $^{\circ}$ 12' S 75 $\frac{1}{2}$ W

at 23.67 pole 10' S. of another
post at SW \angle of track.

Platting above makes this line

S 72 $\frac{1}{4}$ W, 23.62

40

Line No 5

Offset 10' left

Random N 39 $^{\circ}$ W

at 10.00 set 50' R (70' R.
of line)

Set E 40' = 80' E of line

Set W. 30' = line

at 34 $^{\circ}$ = (136 rods) came
out 7 ft. W. of \angle post
Westing 7' = 34.00 ch

See Halling for W.M.

at 21.94 fence, this fence extends
to pt. marked 15.49 of line #1

Mess. eastward along this fence,
at 3 $^{\circ}$ watering places, both sides
of fence. dividing line to pass
through this point.

957

INDEXED ON MAP

Line # 4-

Along Hadley -
N 57 E

at 23.50 (94 p) NE \angle of
tract at SE \angle at Big Elm
on line Daugherty

S 71 7 E - with new
wire fence

Line N^o 3

Start at Elm in Daugherty line
which Elm is 7' S. of Hadley
fence - & 4' E of Hadley \angle
Everyone claims that all
old fences run to this Elm
at 22.25 (89 rods) S 71 E.

- S 71 E
Start at SE \angle of Daugherty &
meas. westward 62 1/2 p.

these pt are 1.63 apart.

Divide this $2 \overline{) 1.63}$
 .81 1/2

22.25
 .815

23.065

957

INDEXED ON MAP

Line No 2

S $72\frac{3}{4}$ W

at 6.55 came out at 25.26

of line No 1.

• Set 2 big stakes.

Sept. 29-08

Total acreage = 104.4

Dividing equally = 52.4.

Division point in East line
(line No 1) is N $21\frac{3}{4}$ W,
19.00 ch from S.E. \angle
of tract or $6\frac{2}{6}$ ch
from N. end of line.

Thence S $74\frac{1}{2}$ W - 30.10
(about) to W. line, 21.35
ch. N. of S.W. \angle

(think this case is about S $74\frac{3}{8}$ W)

See line # 5

Temporary stake set at 21.94

21.94

21.35

.59

Meas. S.E. along this line 59
links to division point.

957

INDEXED ON MAP

Jan. 21. 09
Waltham - Maimon

19.00
15.49 N 2 1/4 W - ok
3.51

Start in E. line, 19.00 from
S.E.C. or 3.51 N. R.

2 stakes as previously set.

- Nit. 36" W. Oak - N 51 E - 80 lbs
- 13" Red Oak - S 49 1/4 E - 73 lbs
- 18" Swamp Ash - N 70 1/4 W - 69 lbs

Random 57 1/2 - W

- 4+00 Stake in random line
- 7.00 " " " "
- 9.00 " " " at big maple
- 10.00 " " " 3'
- 10.00 Stake in random
- 15.00 " " " at big sugar
- 19.00 " " " "
- 22.00 " " " "

at 30.22 - came out in W.
line, 30 lbs S. of stake set
in fence line to E.
(See line # 5.)

21.94	59
21.35	50
<u>59</u>	29 = nothing

By setting S. 59 lbs from
Cent of old E x W fence (21.94 -
21.35 = 59) it will shorten
random line as run 7 lbs,
making length of line 30.22 - .07 =
30.15 or .05 longer than
calculated length. Corner
as set (stake no with as
and no post will be placed at
one) is 29 + lbs S. of
random or 1 lb per
chain.

Corrected line by set S. at
each stake as many links
as no. of stakes.