

Huston - Longfellow Surrey
V.M.S. 12099 Monroe Trp.

See Lee Sarry 1202
Bramer R for Huston farm.

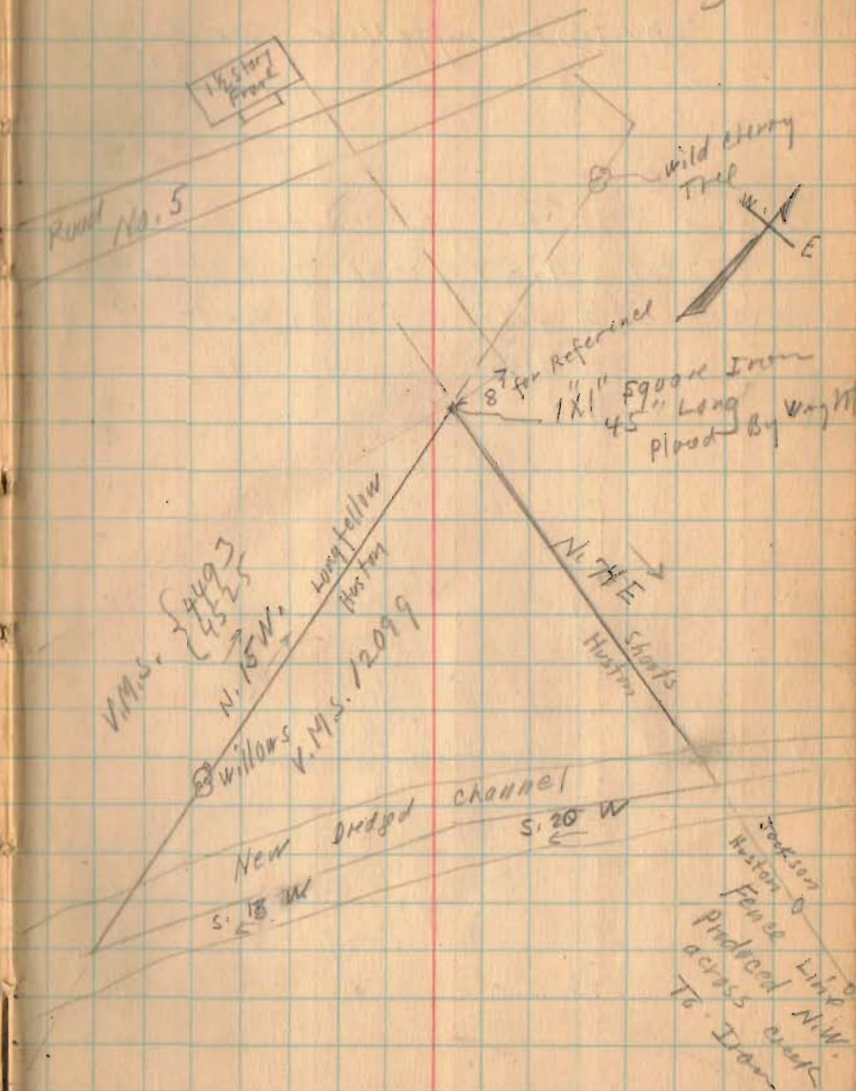
To West Liberty
West Liberty
Zanesfield 1/4

INDEXED ON MAP

(1212)

Mad River
See Book 479
page 29 for Lieb song
Lied
Huston

July - 22 - 1930
Wright
Bill Wright

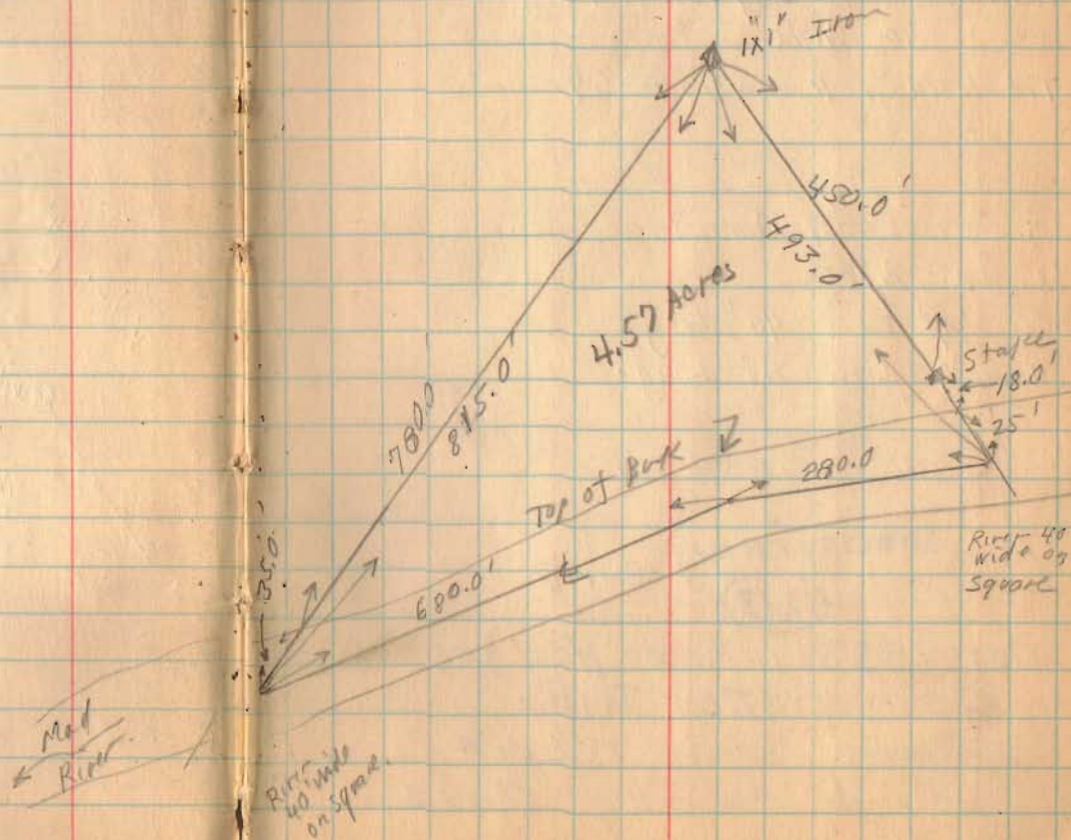


(over)

Huston-Longfellow survey

$$\begin{array}{r} \text{Total } 4.57 \text{ Acres To } \phi \text{ of Creek} \\ (960 \times 20) = .45 \text{ " in creek} \\ \hline 4.12 \end{array}$$

INDEXED ON MAP



SHOOTS TO LONGFELLOW

The following described real estate situated in Monroe Township Logan County, Ohio and being in V.M.S. 12099.

Beginning at a stone in the north line of V.M.S. 4493, 4525 at the center of the West Liberty, Zanesfield and Rushsylvania Pike (County Highway No. 5); thence with the north line of V.M.S. 4493, 4525, N. 73-56 E. 235.25 feet to a point in the northeast corner of said V.M.S. 4493, 4525; thence with the survey line S. 15°-00' E. 226.45 feet to a stake, said stake being the beginning point of this survey; thence continuing with the survey line S. 15°-00' E. 483.40 feet; thence N. 73°-40' E. 493.00 feet to the center of Madriver; thence N. 61°-22' W. 682.35 feet (passing a stake on the bank of Madriver at 39.90 feet) to the place of beginning containing 2.73 acres.

1212

10-1

INDEXED ON MAP

LONGFELLOW TO SHOOTS

The following described real estate situated in Monroe Township, Logan County, Ohio and being in V.M.S. 4493, 4525.

Beginning at a stone in the north line of V.M.S. 4493,
⁴⁵²⁵
~~4425~~ at the center of West Liberty, Zanesfield and Rushsylvania Pike, County Highway No. 5; thence with the north line of said survey N. 73°-56' E. 235.25 feet to the northeast corner of said survey; thence with the east line of said survey S. 15°-00' E. 226.45 feet to a stake; thence N. 61°-22' W. 323.75 feet to the place of beginning containing 0.61 acres.

1212 1D.2

INDEXED ON MAP

Huston - Longfellow Survey

Monroe Township .

The following described land in V.M.S. 12099,
Monroe Township, Logan County Ohio:-

Beginning at a 1" square iron bar in the West line of said Survey 12099 and being the S.W. corner of Joseph Shoots 69.49 acre tract, thence N.74 E. with West line of said Shoot's tract, 493 feet to the center of the new dredged channel of Mad River; thence with the center of Mad River downstream S.20 W. 280 feet; thence continuing with center of said Mad River S. 13 W. 680 feet to a point in the West line of said Survey 12099; thence N.15 W. with said Survey line 12099 815 feet to place of beginning, said tract containing 4.57 acres more or less and being the same tract as surveyed 1930 as shown and recorded in Logan County Surveyor's Book 512, Page 22 and 23 .

The above described land is a triangular strip of land out of the N.W. corner of present 262.57 acre tract owned by W.C. Huston and being that part on the West side of Mad River.

1212 2D

INDEXED ON MAP