

FB 602

Road. 29

Liberty - Monroe - Jefferson Twp.

See Book 511 Page 41
for 1929 Survey.

Oct. 18, 1939 - Staked 60' - 30' R&L from E.

(4753)

(2709)

(4753)

NW Post
25' from E

1345

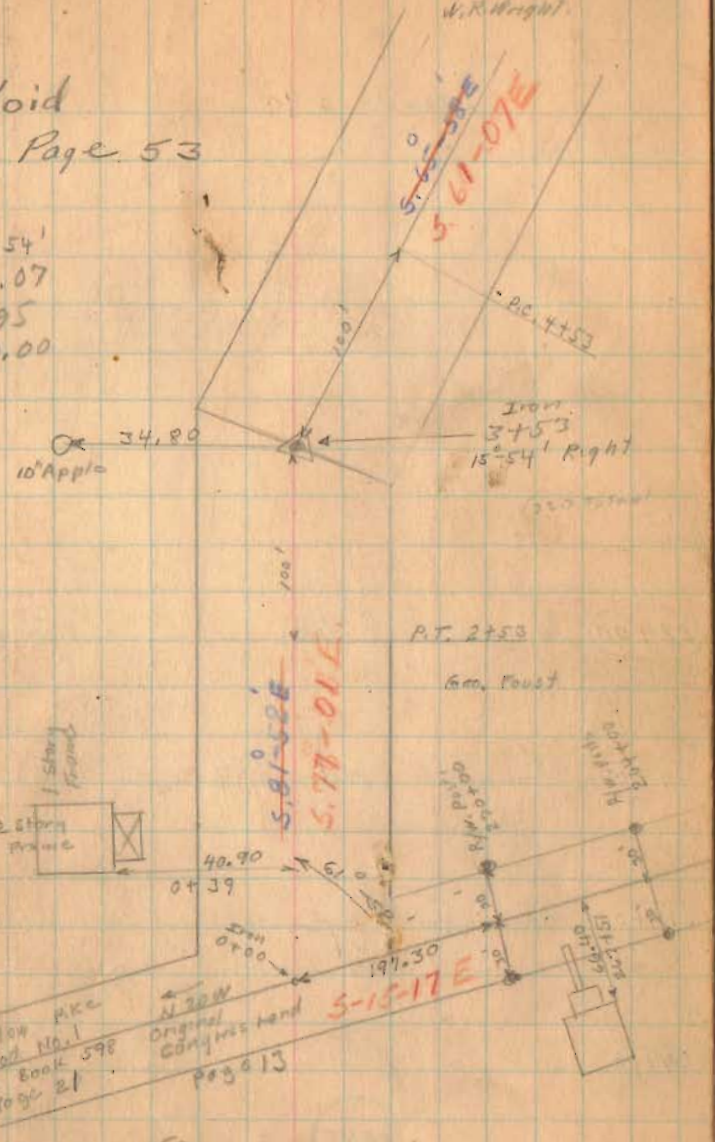
INDEXED ON MAP

Nov. 13, 1937
F. Wright
G. Wilges
W. R. Wright

23

Yoid
See Page 53

$\Delta = 15^{\circ} 54'$
 $R = 716.07$
 $E = 6.95$
 $T = 100.00$



(See page 53)

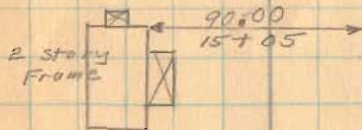
FB 602

Road. 29

10-12-32

24

x x 25+00 x Z



(22+00) Monuments (Hubs Set)

(17+00) Monuments (Hubs Set)

(12+00) Monuments (Hubs Set)

(7+00)

1345

INDEXED ON MAP

With Early

x x 10+95 x
Patrick Fitzpatrick.

561-07E

Patrick Fitzpatrick
(old R.R.) 6+13

W.H. Early
6+13
Geo. Foot

FB 602

Road 29

19-12-37 25

(37+00) Monuments (Hubs Set)

(32+50) Monuments (Hubs Set)

(27+12) Monuments (Hubs Set)

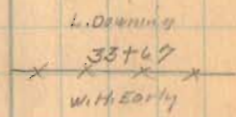
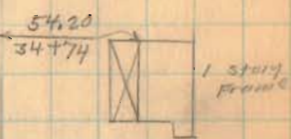
1345

INDEXED ON MAP

56°-56'E

51°-05'-47"E

S. 64.5° E.
N. 25.5° W.



Don
27+12
0°-11' Right



FB 602

Road 29

62+75 Monuments (Hubs Set)

63+00 Monuments (Hubs Set)

58+25 Monuments (Hubs Set)

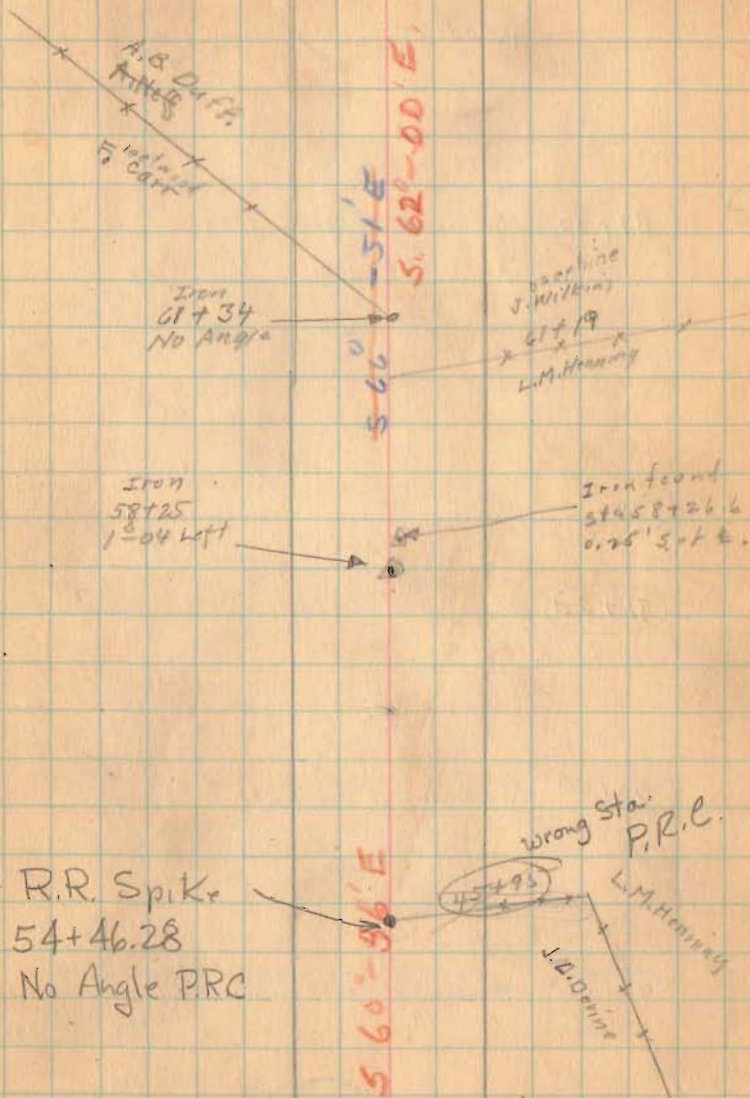
55+00 Monuments (Hubs Set)

49+00 Monuments (Hubs Set)

1345

INDEXED ON MAP

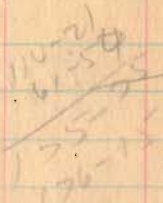
Nov. 15-1939 27
Cloudy
F. Wright
G. Wright
W.A. Wright



FB 602

Road 29

87+00 Monuments (Hubs Set)



85+00

Monuments (Hubs Set)

81+00

Monuments (Hubs Set)

Notes Sta. 70+00 to 70+14 - 1" Cor. N. Side

76+00

Monuments (Hubs Set)

71+00

Monuments (Hubs Set)

1345

INDEXED ON MAP

11-15-30

28

Hubs Found
5/17/69
Set 3/4" P Bar
on N. side Hub
D.L.O. 85+67

No Angle

Susie H. Hester

Road 55
Book 607
Page 28

Henry

A. N. G. E.

Susie H. Hester

741

740

739

738

737

736

735

734

733

732

731

730

729

728

727

726

725

724

723

722

721

720

719

718

717

716

715

714

713

712

711

710

709

708

707

706

705

704

1 story
75+43

Iron
20+28
0' 53" Right
OK

79+20

68+10

70+51

2 story
Frame

3 61-07E
5 65-38E

562-00E

FB 602

Road 29

11-15-25

29

95100

94100

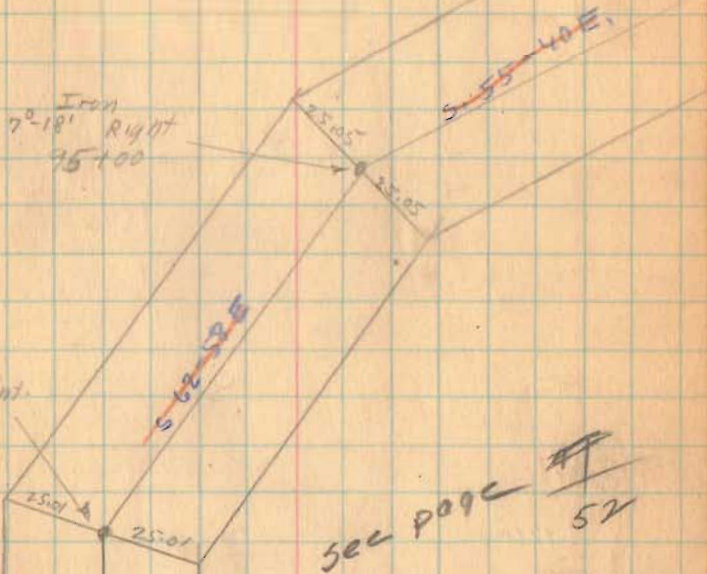
See Page 52

92100

Monuments (Hubs Set)

1345

INDEXED ON MAP



See page 52

S 61-07 E

S 65-58 E

94
55 67

8 9
7 70
41

FB 602

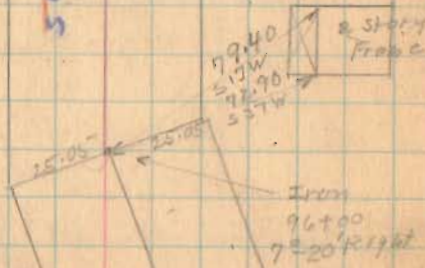
Road. 29

11-15-37

30



597-70 E.
 598 S
 599 S



~~97-10~~

~~96-10~~

1345

INDEXED ON MAP

FB 602

Road 29

~~111+00~~

108+00 Monuments (Hubs Set) end of Project.

~~100+00~~

103+00 Monuments (Hubs Set)

~~100+02~~

Tap Hubs Mon Set

~~100+00~~

1345

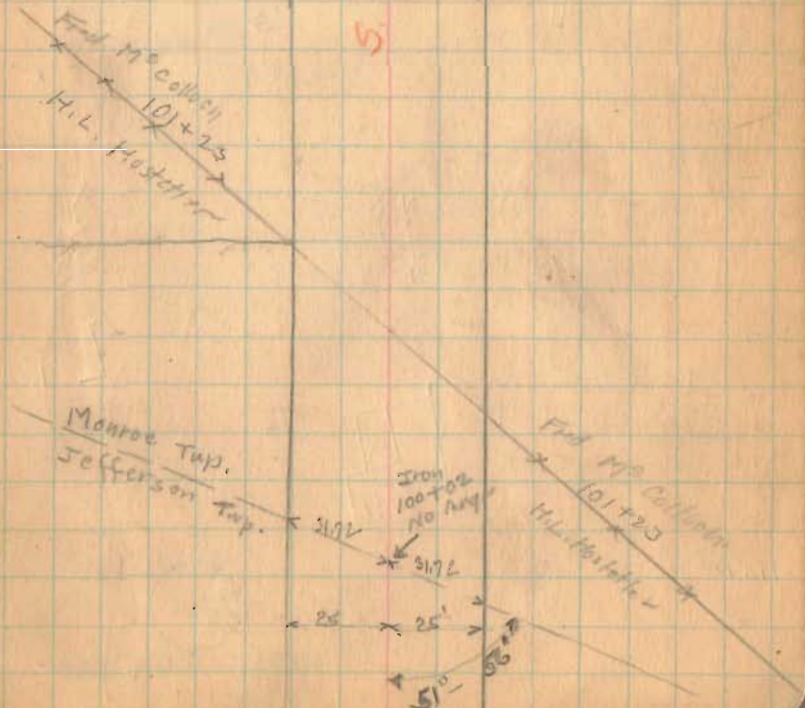
INDEXED ON MAP

11-15-37

31

90
2
3

S. 83° - 46' E.



FB 602

Road 29

127+00

126+00

125+00

123+00

120+00

123+57.2

1345

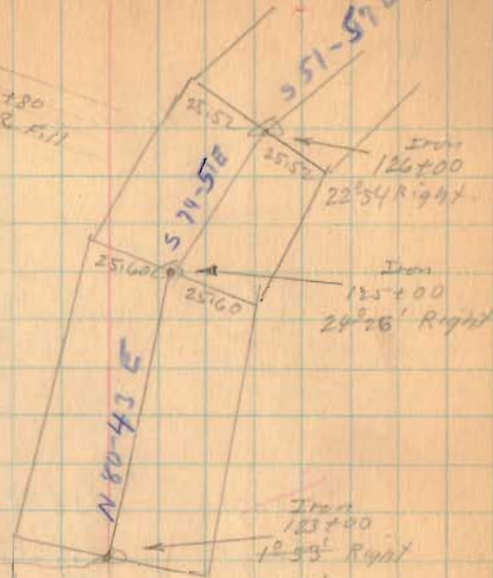
INDEXED ON MAP

123 W
116 SE
684

11-15-37

33

125+80
Old RR 4.11



122+70.8

Paul
A.G. Sidwinger

118+97

119+25

Walter

Lane

118+86

Fred M^cCollogh

Paul
A.G. Sidwinger

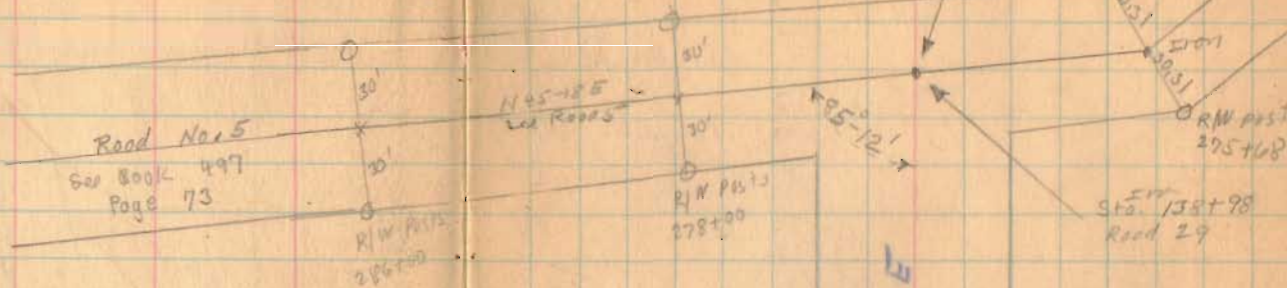
118+19

Fred M^cCollogh

N 78-50 E

FB 602

Road 29



Length 13898 Feet
 Length 2.6322 Miles
 Length 2.63 Miles

138+00

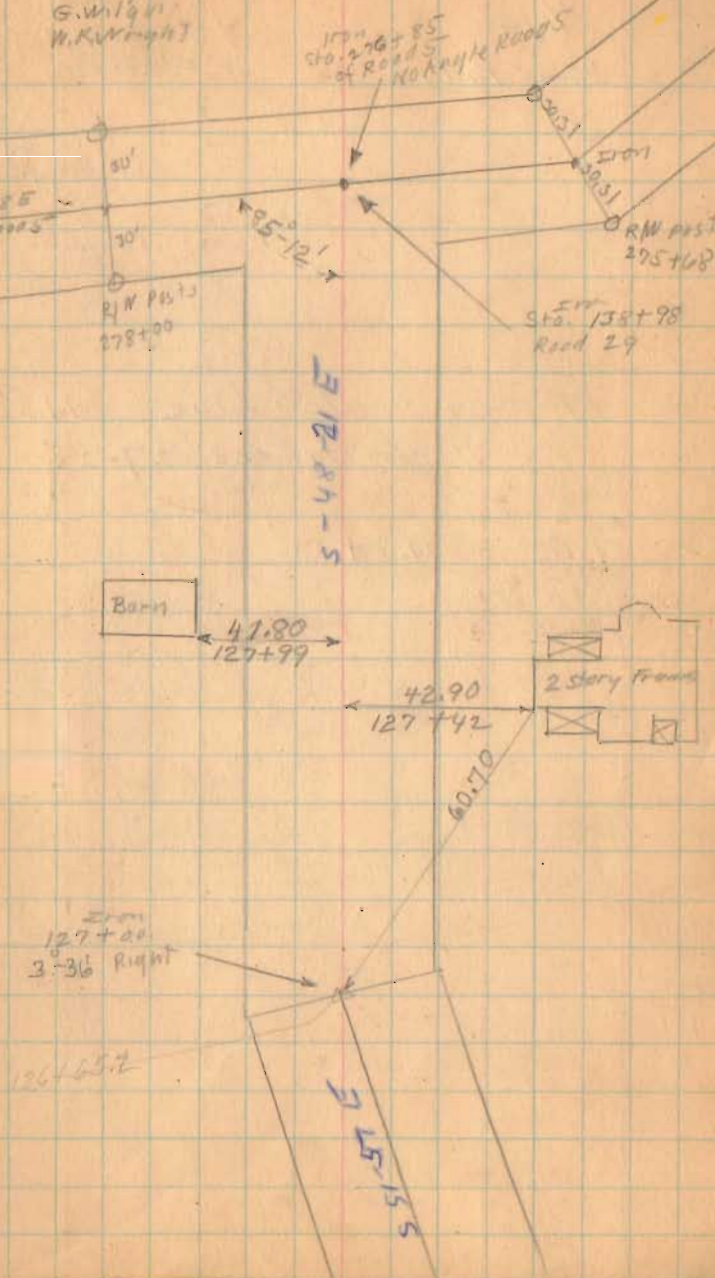
134+00

1345

130+00

INDEXED ON MAP

Nov. 16, 1937
 cloudy - Light Rain
 F. Wright
 G. Wilgus
 W. K. Wright



FB 713

C.B. 29
Jefferson Twp.
Logan Co., Ohio

99+95.95 - P.O.T. - Fd. 1/2" dia. iron
bar in monument box - Twp.
Line - Ref: F.Bk. # 402, pg. 31
& plan X-29

93+17.11 - P.O.T. - Fd. R.R. Spike -
S.E. corner 14.08 Ac. tract -
(R-5277)

90+98.81 - P.O.T. - Fd. R.R. Spike -
N.E. corner 3.573 Ac. tract -
(R-5005)

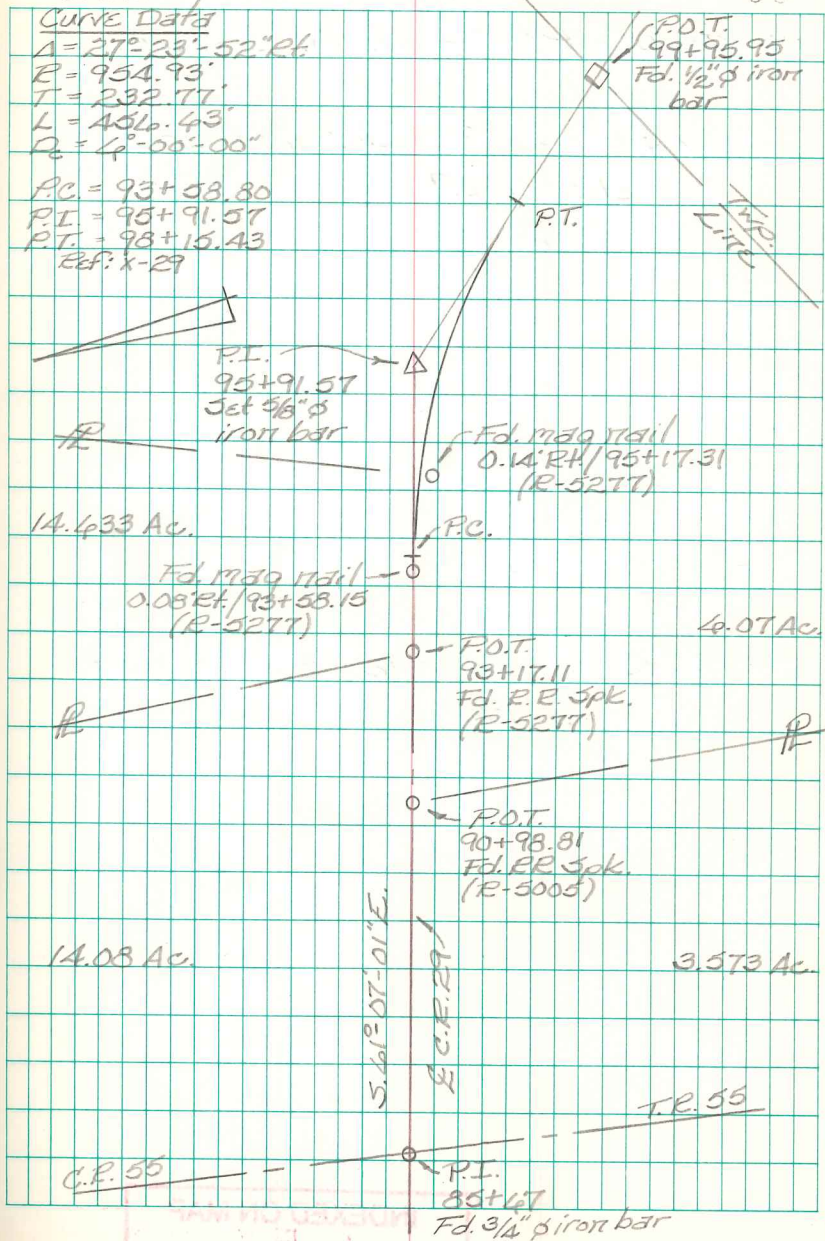
85+47 - P.I. - Fd. 3/4" dia. iron bar ≈
14" deep - start of this survey -
Ref: F.Bk. # 402, pg. 28.

INDEXED ON MAP
1345

B. Simmonds
G. Dappert
C. Dill

Dec. 2014

60



FB 713

C.R. 29
Morroe Twp.
Logan Co., Ohio

113+75.59 - P.O.T. - Set R.R. Spike

112+41.43 - P.I. - Fd. 1" dia. iron bar -
Ref: F.Bk. # 4666, pg. 32 &
X-29A.

42°-40'-02" Lt.

111+07.27 - P.O.T. - Set R.R. Spike

108+19.14 - P.O.T. - Fd. mag nail -
N.W. corner 3.463 Ac. tract

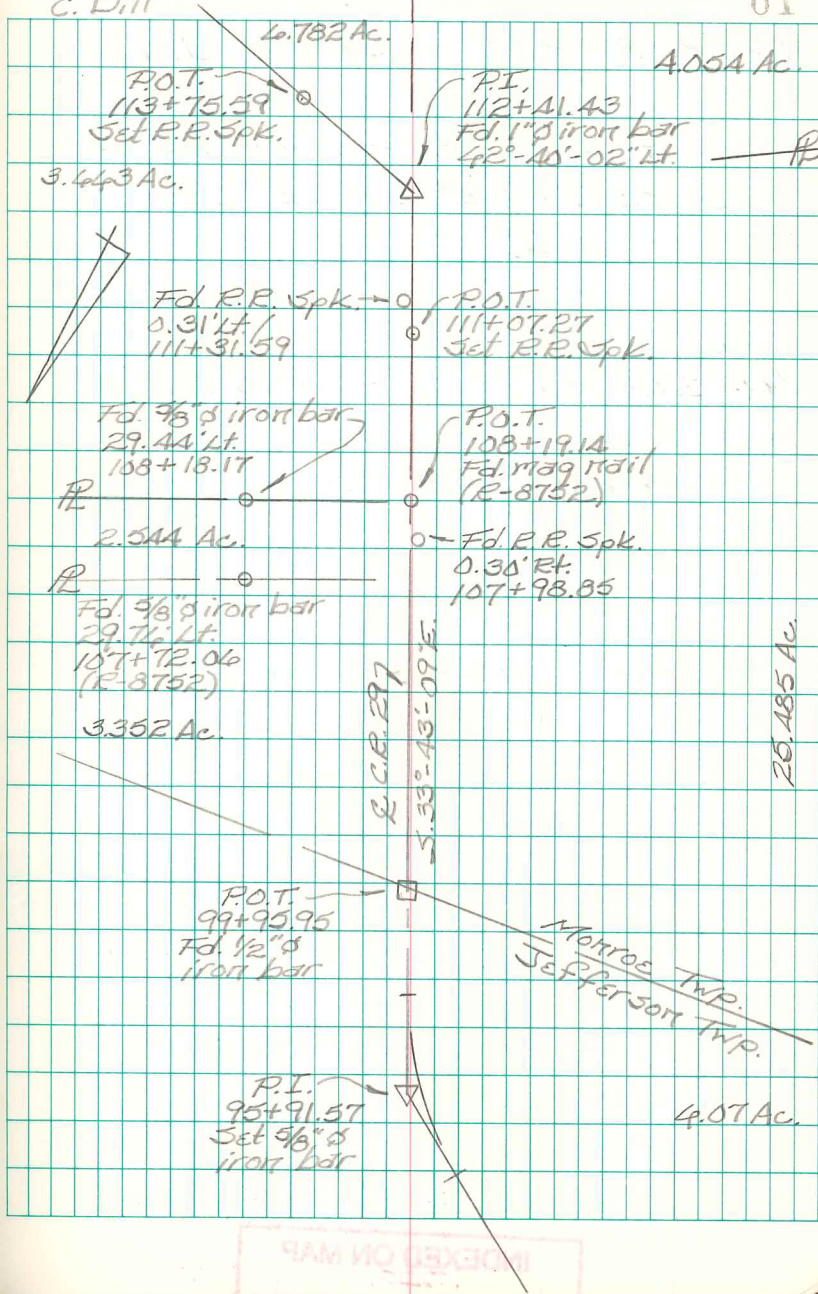
99+95.95 - P.O.T. - Fd. 1/2" dia. iron
bar in monument box. - Twp.
Line - Ref: F.Bk. # 402, pg. 31
& X-29.

INDEXED ON MAP
1345

B. Simmonds
G. Dappert
C. Dill

Dec. 2014

61



INDEXED ON MAP

FB 713

C.E. 29
Marion Twp.
Logan Co., Ohio

122+89.82 - P.I. - Set $\frac{5}{8}$ " dia.
capped iron bar - shown
as sta. 123+00 in F.Bk. # 602,
pg. 33. - Ref: F.Bk. # 666, pg. 33
3°-57'-19" Rt.

119+15.38 - P.O.T. - Fd. mag nail -
S.E. corner 5.062 acre
tract (R-8752).

116+34.20 - P.O.T. - Fd. mag nail -
S.W. corner 5.062 acre
tract (R-8752).

113+75.59 - P.O.T. - Set R.R. Spike

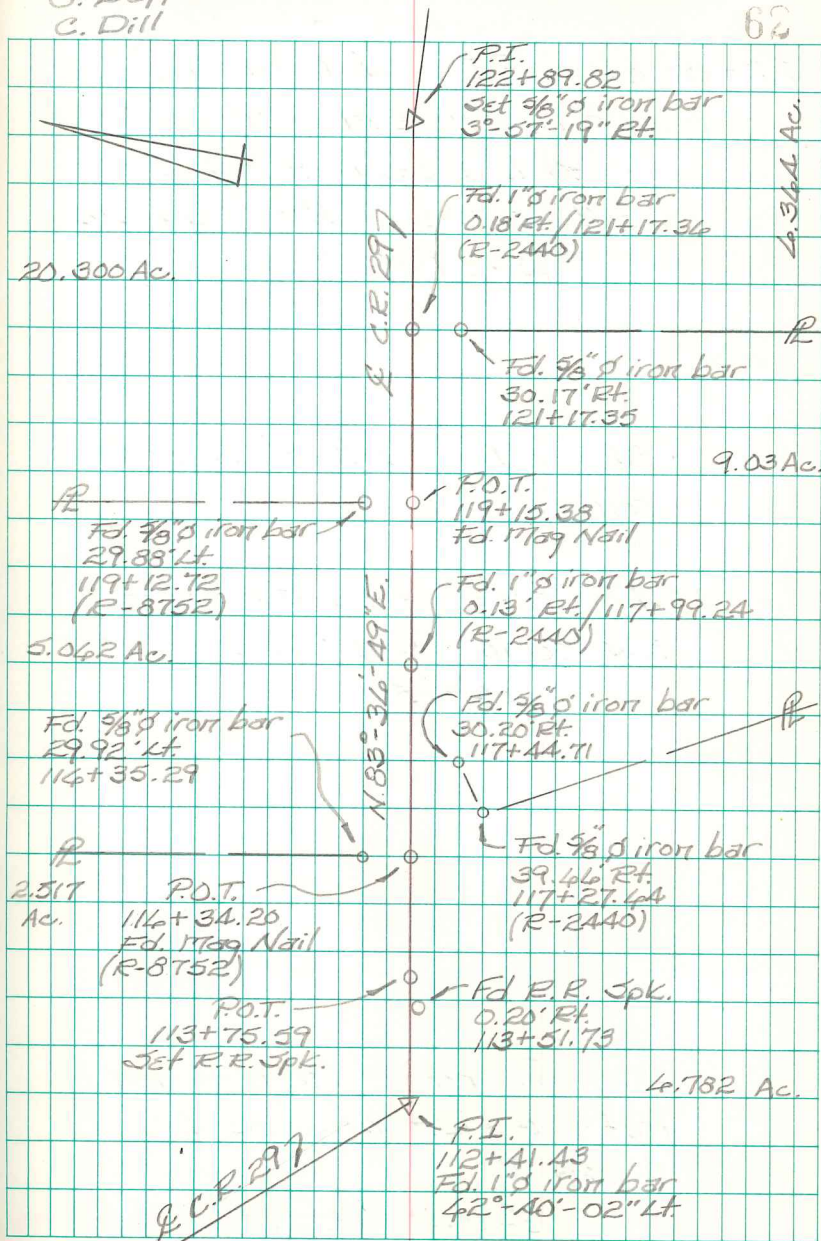
112+41.43 - P.I. - Fd. 1" dia. iron bar -
Ref: F.Bk. # 666, pg. 32 &
X-29A.
42°-40'-02" Lt.

INDEXED ON MAP
1345

B. Simmons
G. Dappert
C. Dill

Dec. 2014

62



FB 713

C.R. 29
 Monroe Twp.
 Logan Co., Ohio

125+89.40 - P.I. - Fd. bent $\frac{1}{2}$ " dia.
 iron bar here in 1989 - replaced
 w/ $\frac{5}{8}$ " dia. capped iron bar
 at that time - shown as sta.
 124+00 in F.B.K. # 402, pg. 33
 $22^{\circ}-54'-57"$ Rt.

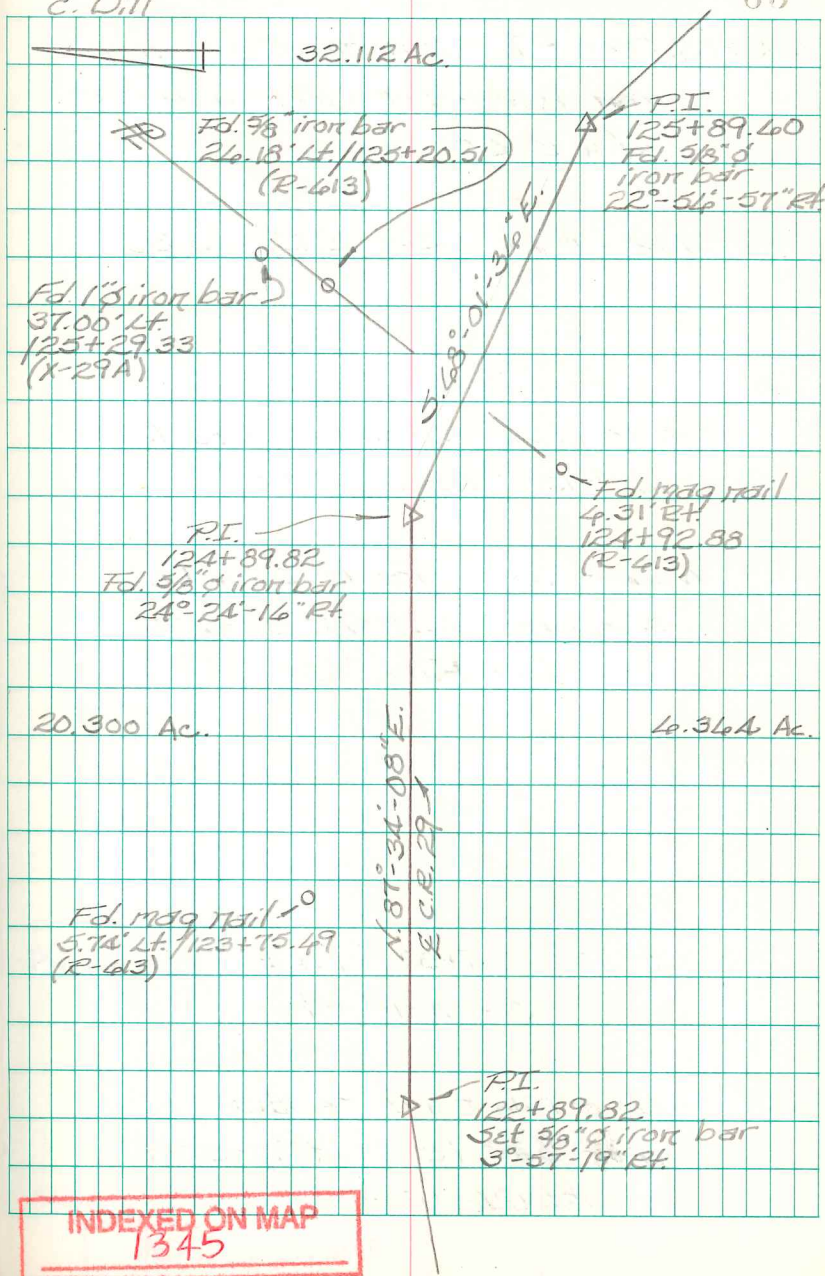
124+89.82 - P.I. - Fd bent $\frac{1}{2}$ " dia.
 iron bar here in 1989 - replaced
 w/ $\frac{5}{8}$ " dia. capped iron bar at
 that time - shown as sta.
 125+00 in F.B.K. # 402, pg. 33
 $24^{\circ}-24'-14"$ Rt.

122+89.82 - P.I. - Set $\frac{5}{8}$ " dia.
 capped iron bar - searched
 here for iron in 1989, found
 nothing - shown as sta.
 123+00 in F.B.K. # 402, pg. 33
 $3^{\circ}-57'-19"$ Rt.

B. Simmons
 G. Dappert
 C. Dill

Dec. 2014

63



FB 713

C.R. 29
Morrow Twp.
Logan Co., Ohio

138+87.23 - P.I. - Set $\frac{5}{8}$ " dia. capped
iron bar - Intersection E C.R. 5
w/ C.R. 29

138+57.12 - P.O.T. - Set R.R. Spike

134+24.42 - P.O.T. - Fd. common nail
on split of R/W monuments -
 ≈ 10 " deep - Shown as Sta. 134+00
in F.Bk. # 466, pg. 36.

130+24.16 - P.O.T. - Fd. R.R. Spike -
 ≈ 8 " deep - Shown as Sta.
130+00 in F.Bk. # 466, pg. 36.

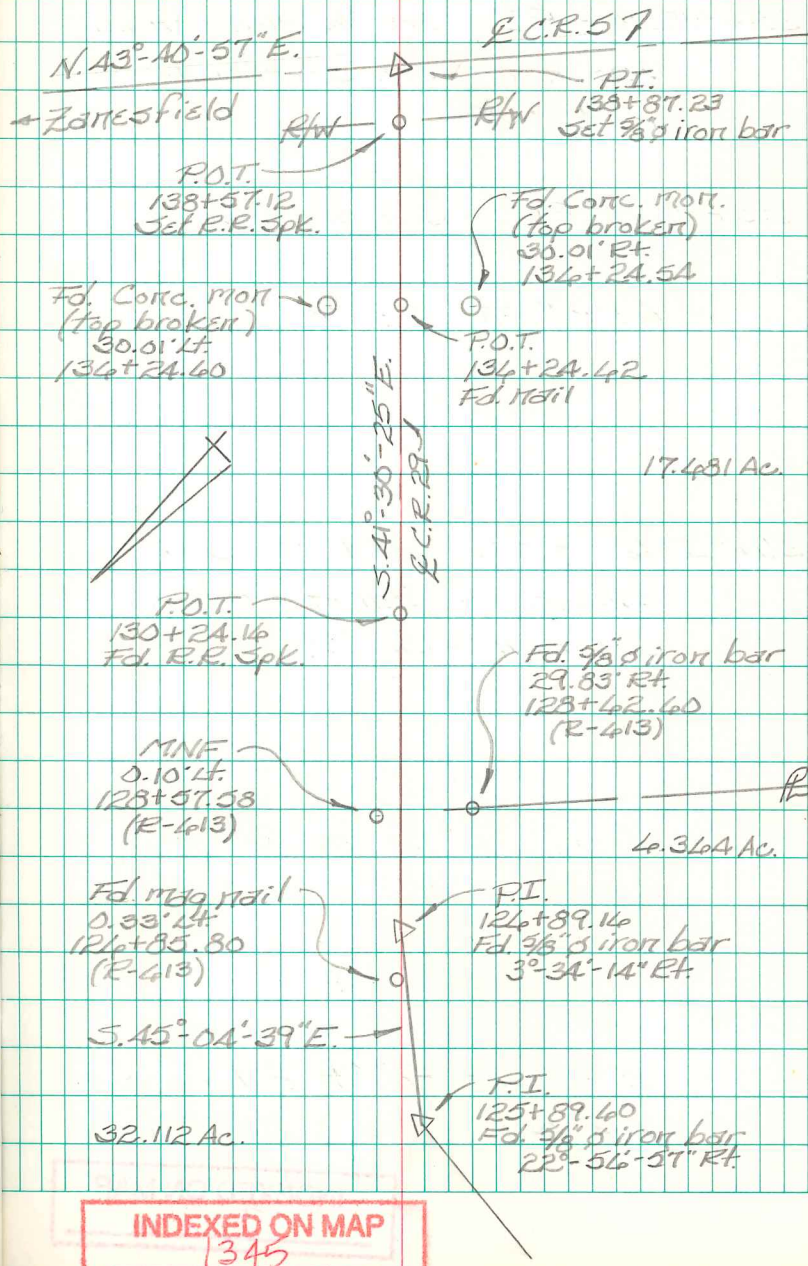
126+89.16 - P.I. - Fd. bent $\frac{1}{2}$ " dia. iron
here in 1989 - replaced w/ $\frac{5}{8}$ " dia.
capped iron bar at that time &
installed a monument box - shown
as Sta. 127+00 in F.Bk. # 402, pg. 34.
3°-34'-14" Rt.

125+89.40 - P.I. - Fd. $\frac{5}{8}$ " dia. capped
iron bar (circa 1989) - shown
as Sta. 126+00 in F.Bk. # 402, pg. 33
22°-56'-57" Rt.

B. Simmons
G. Dappert
C. Dill

Dec. 2014

64



INDEXED ON MAP

1345

FB 713

Intersection C.R. 5 w/ C.R. 29

Monroe Twp.
Logan Co., Ohio

288+98.74 - P.I. - Fd. $\frac{5}{8}$ " dia. iron bar -
shown as Sta. 289+00 in
F.B.K. # 497, pg. 74.

285+99.11 - P.I. - Fd. $\frac{1}{2}$ " dia. iron bar -
shown as Sta. 284+00 in
F.B.K. # 497, pg. 74.

276+83.50 - P.I. - Set $\frac{5}{8}$ " dia.
capped iron bar - Intersection
C.R. 5 w/ C.R. 29
No Angle

275+48 - P.I. - Fd. 1" square
iron bar - Ref: F.B.K. # 497,
pg. 73.

INDEXED ON MAP
1345

B. Simons
G. Dappert
C. Dill

Dec. 2014

65

